

## **PHOTOS OF THE TESTED EUT**

The following photos are attached:

- Photo 2. Internal View of Test Jig
- Photo 3. Internal View of Both Modules Mounted with Steel Partitions
- Photo 4. EUT (Nivis SGM Module, Previously Sony) mounted on PWB
- Photo 5. Solder Side of EUT Mounting PWB
- Photo 6. Nivis P9 Modem Mounted on PWB
- Photo 7. Circuit Side of Nivis P9 Modem Mounting PWB

Photo 2. Internal View of Test jig

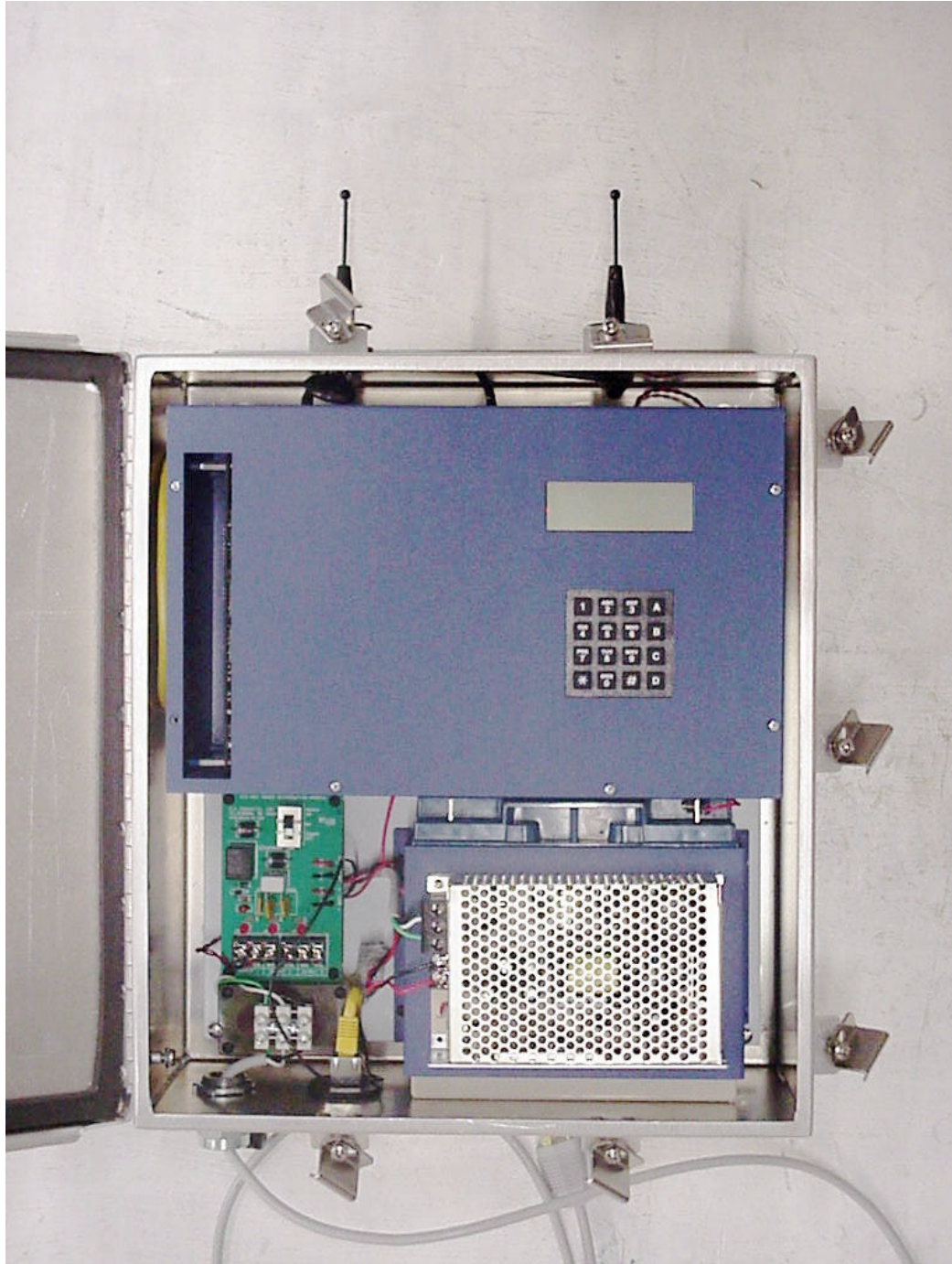


Photo 3. Internal View of Both Modules, Mounted with Steel Partitions

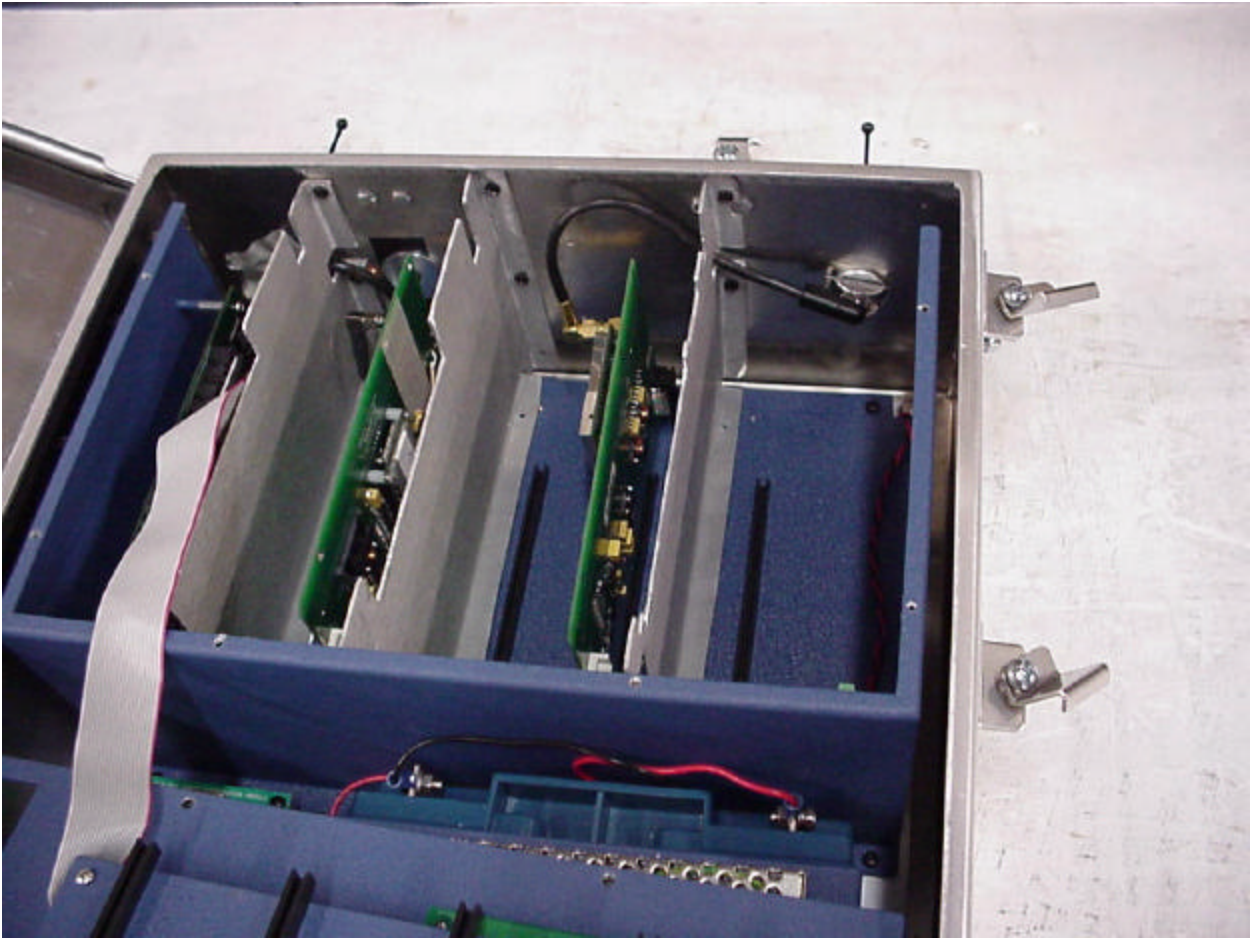


Photo 4. EUT (Nivis SGM Module, Previously Sony) mounted on PWB

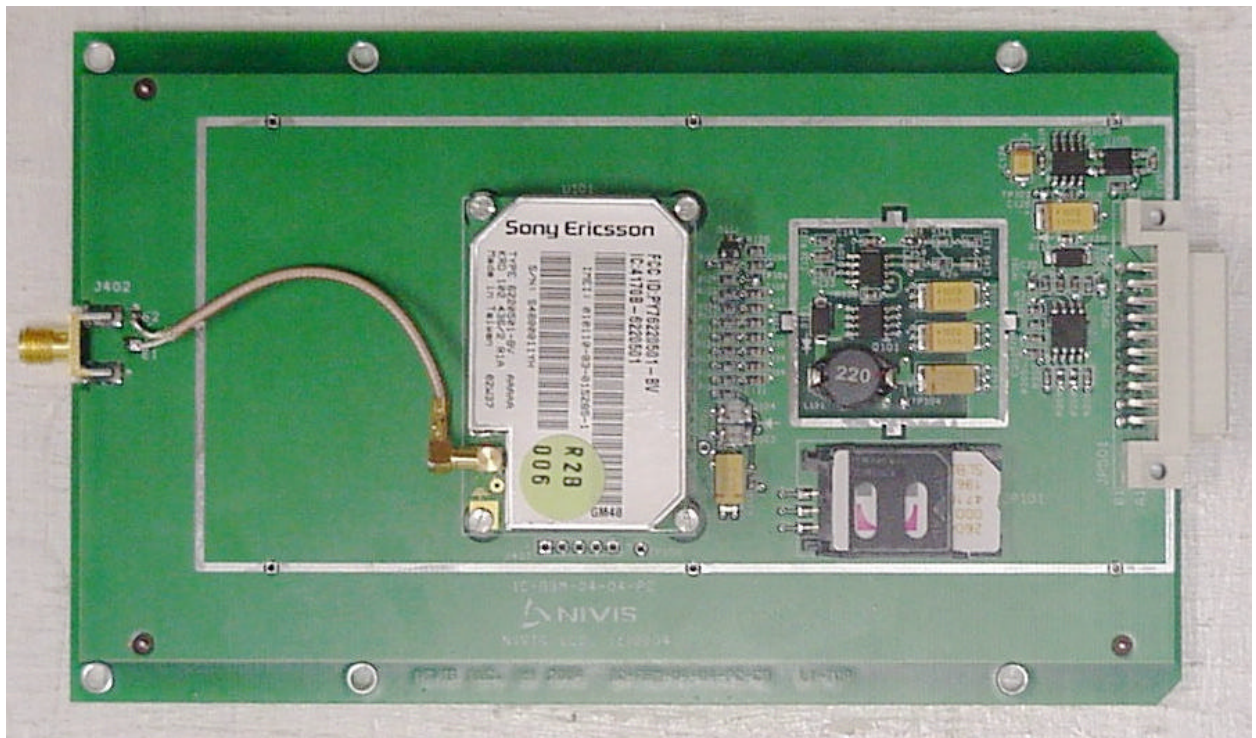


Photo 5. Solder Side of EUT Mounting PWB

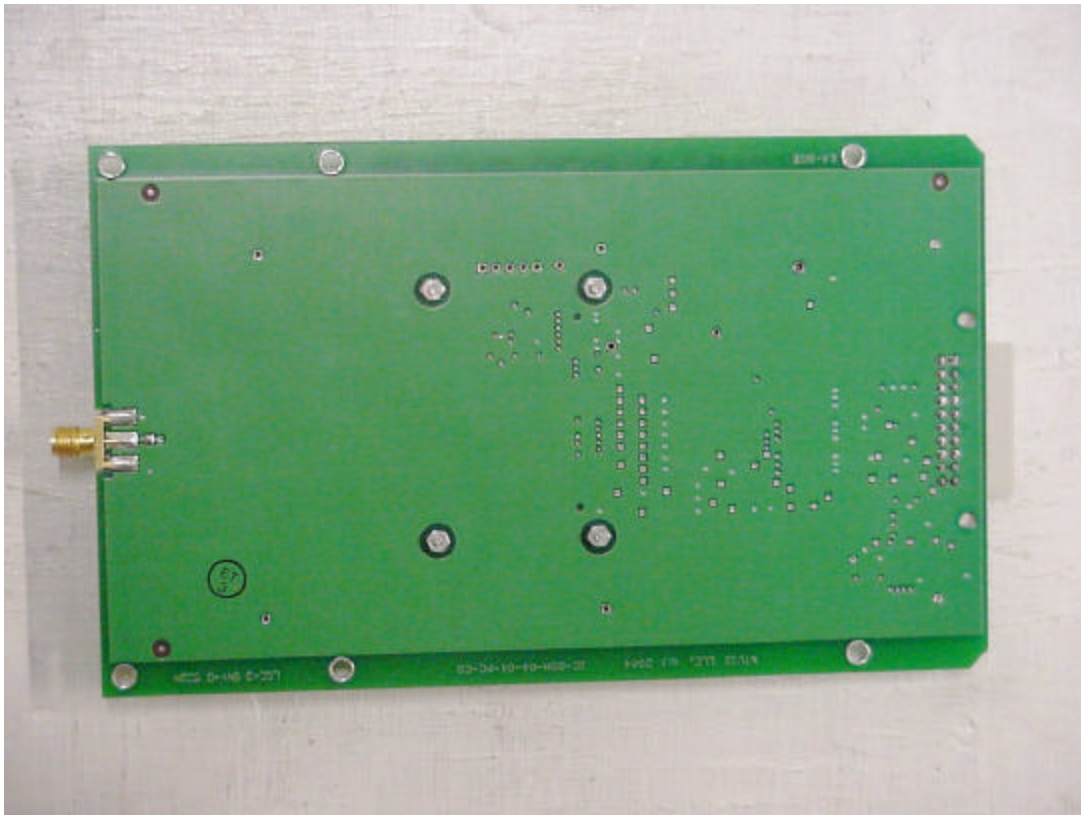
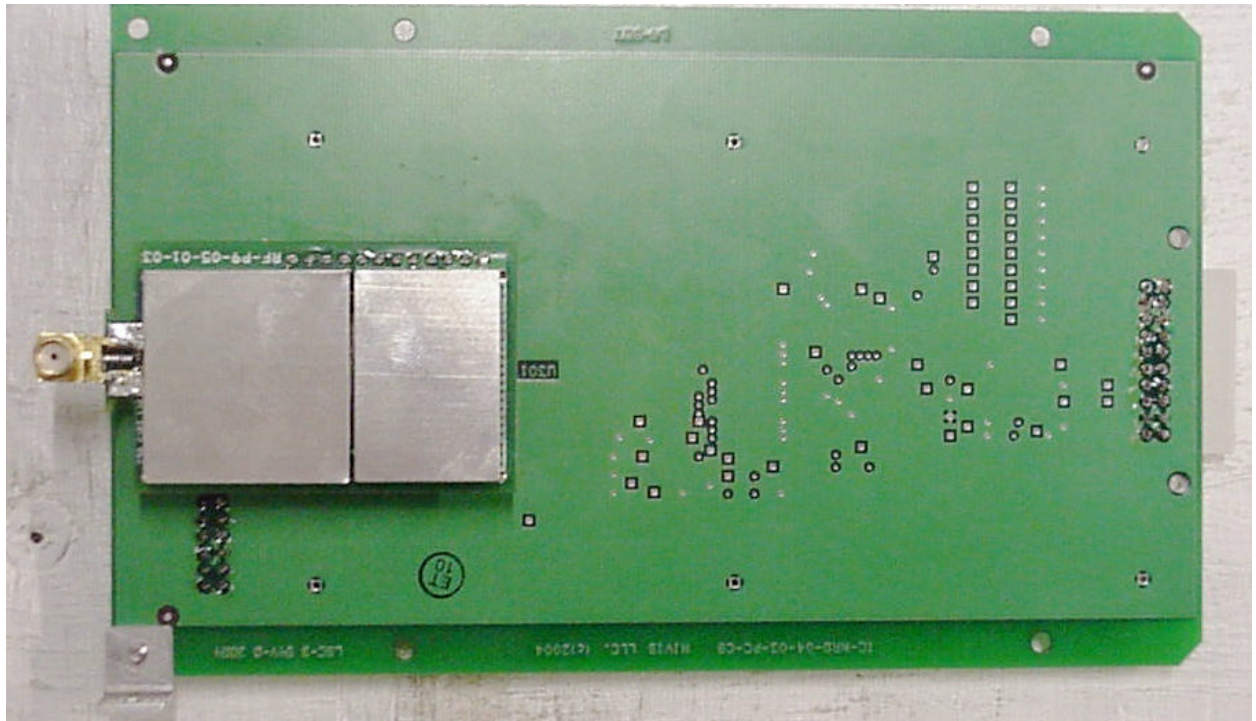


Photo 6.Nivis P9 Modem Mounted on PWB



The image shows a green PCB for a NIVIS camera. Key components include a central camera module with a lens and sensor, a large black connector on the right, and a smaller connector on the left. The NIVIS logo and company name are printed on the board. A barcode and the text "NIVIS LLC" are also visible.

