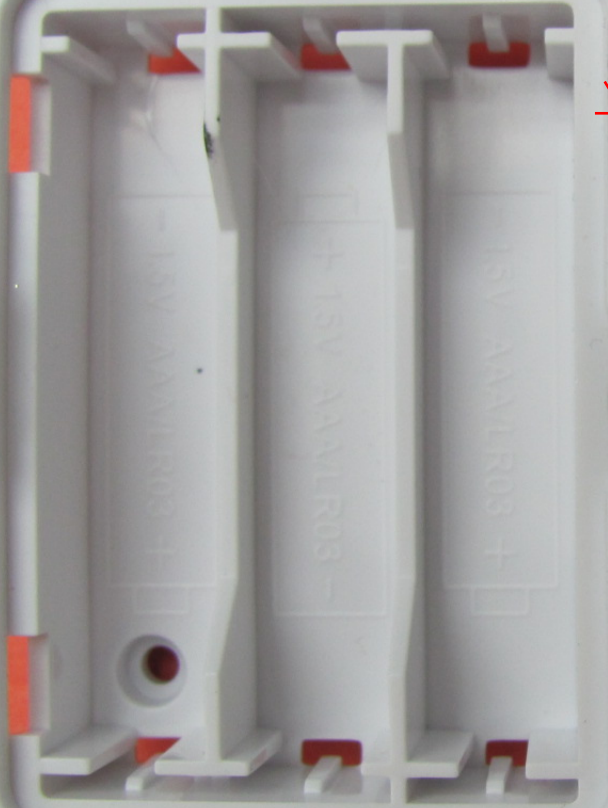
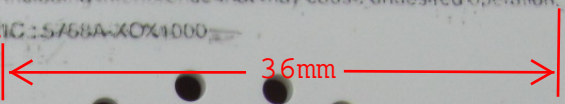
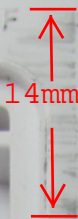
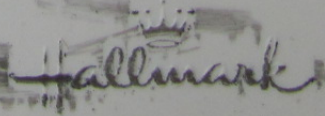


POWER  
ON OFF

FCC ID: S09XOX1000  
This device complies with Part 15B  
of the FCC Rules. Operation is  
subject to the following two conditions:  
(1) this device may not cause harmful interference, and  
(2) this device must accept any interference received,  
including interference that may cause undesired operation.  
IC: 5768A-XOX1000



ONLY AT



© 2010 XOX1000 HALLMARK LICENSING, INC.

FCC ID : S09XOX1000

This device complies with Part 15  
of the FCC Rules. Operation is  
subject to the following two conditions:

- (1) this device may not cause harmful interference, and
- (2) this device must accept any interference received,  
including interference that may cause undesired operation.

IC : 5768A-XOX1000

MLR03

R03

ONLY AT



2010 XOX1000 © HALLMARK LICENSING, INC.