

INTERTEK TESTING SERVICES

hp

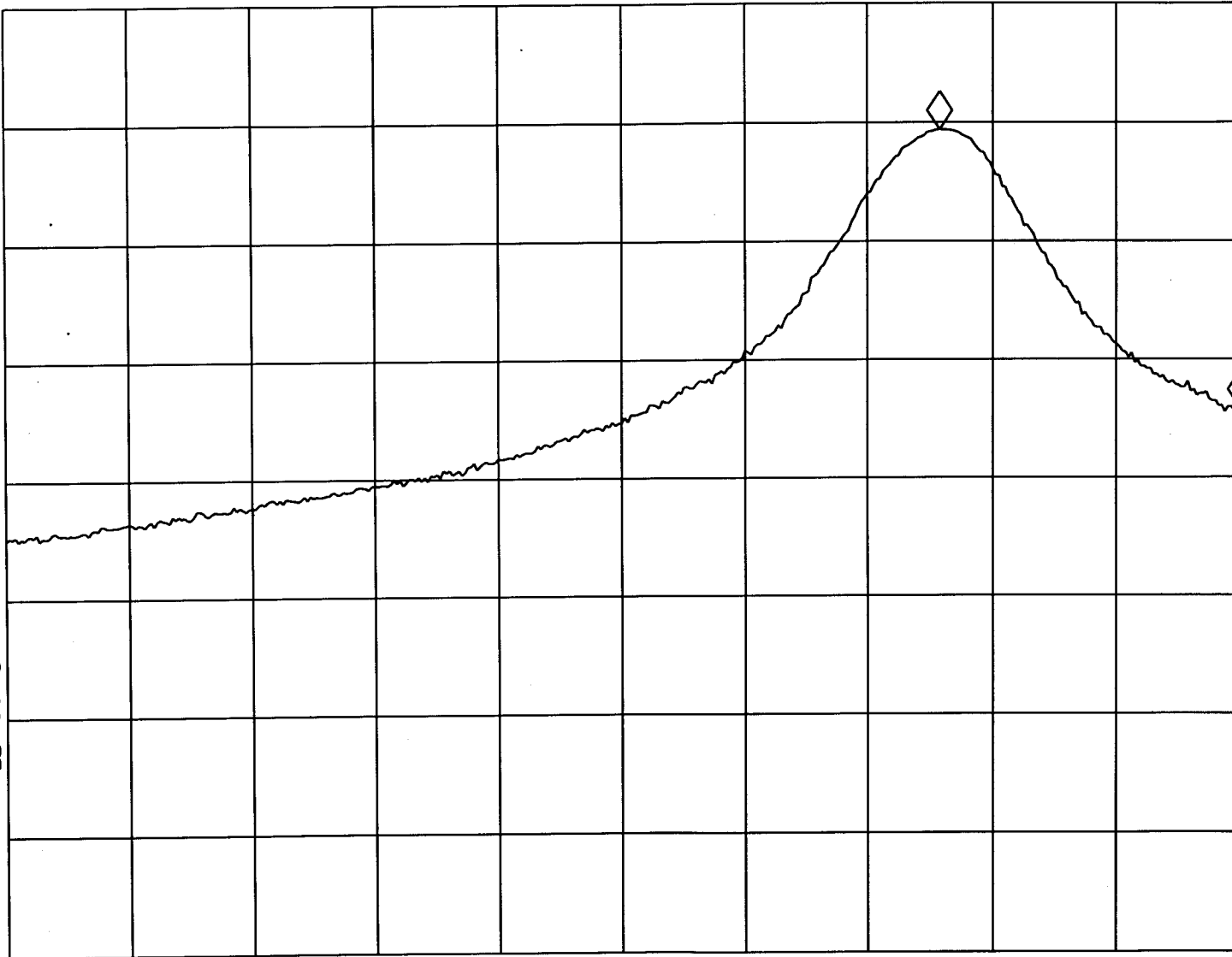
Pursuant to FCC Part 15 Section 15. 225(b) Emissions Requirement

Report No.: 0421712
 Model No.: ~~2800~~ QLX7622
 MKR 3.40 KHZ
 -23.59 dB

REF 10.0 dBm

AT 20 dB

PEAK
 LOG
 10
 dB/



VA SB
 SC FC
 CORR

Tested By: *[Signature]*

Date: 29-11-04

Checked By: *[Signature]*

(Anthony Chan)

Date: 2/12/04

Test Result: Pass / Fail / NA

START 13.55300 MHz

#RES BW 1.0 KHZ

VBW 1 KHZ

STOP 13.56700 MHz

SWP 300 msec

INTERTEK TESTING SERVICES

hp

Pursuant to FCC Part 15 Section 15.227(c) Emissions Requirement

MKR -151.5 KHZ
-40.68 dB

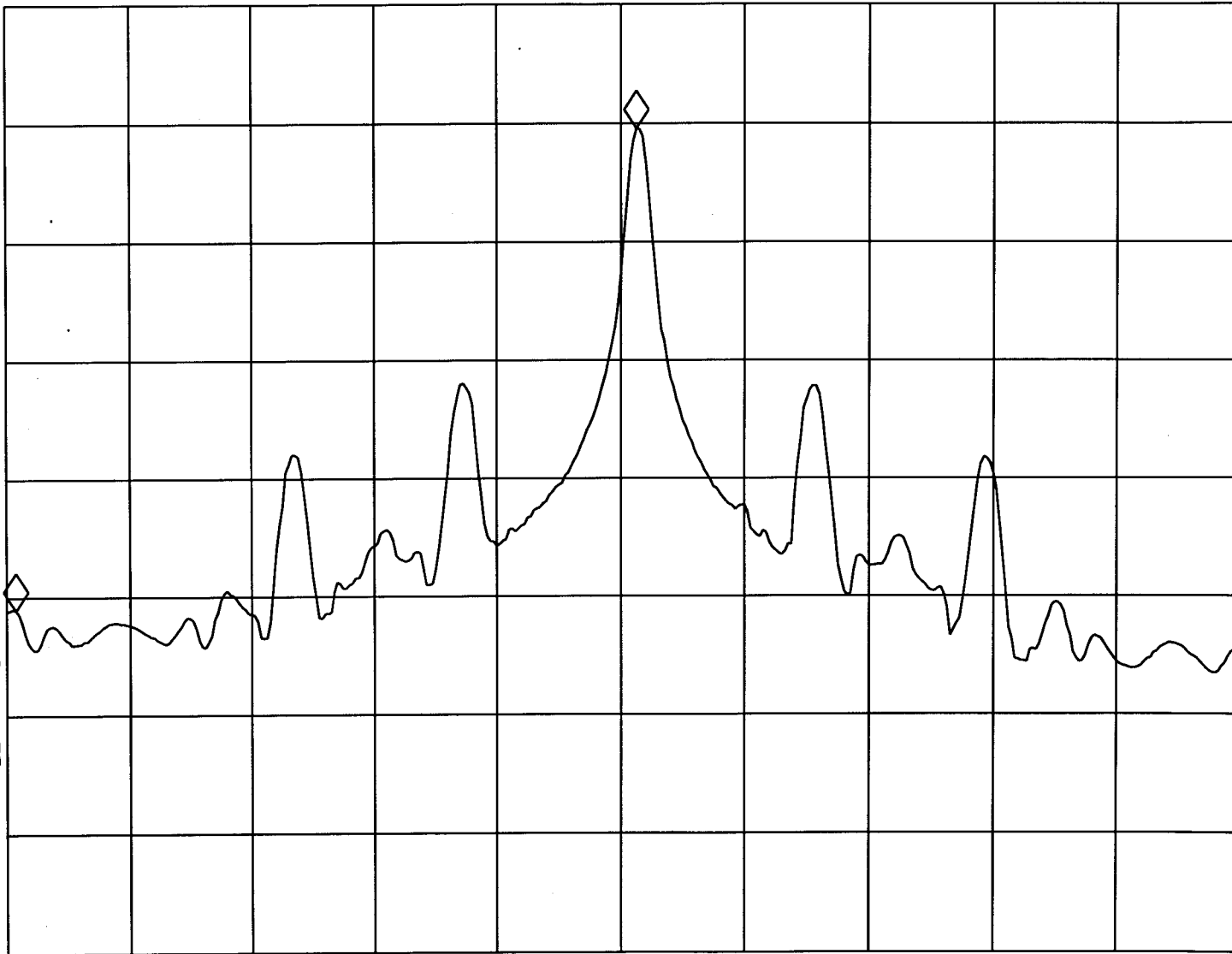
Report No.: 0421712
Model No.: ~~7800QLX7672~~

REF 10.0 dBm

AT 20 dB

PEAK
LOG
10
dB/

VA SB
SC FC
CORR



Tested By: [Signature]
(Benji)
Date: 29-11-04

Checked By: [Signature]
(Anthony Chan)
Date: 2/12/04

Test Result: Pass / Fail / NA

START 13.4100 MHz

STOP 13.7100 MHz

#RES BW 3.0 KHZ

VBW 3 KHZ

#SWP 1.00 sec

INTERTEK TESTING SERVICES

Report No.: 0421712

Model No.: ~~7000~~ QIX 7672

hp

Pursuant to FCC Part 15 Section 15.207 Emissions Requirement

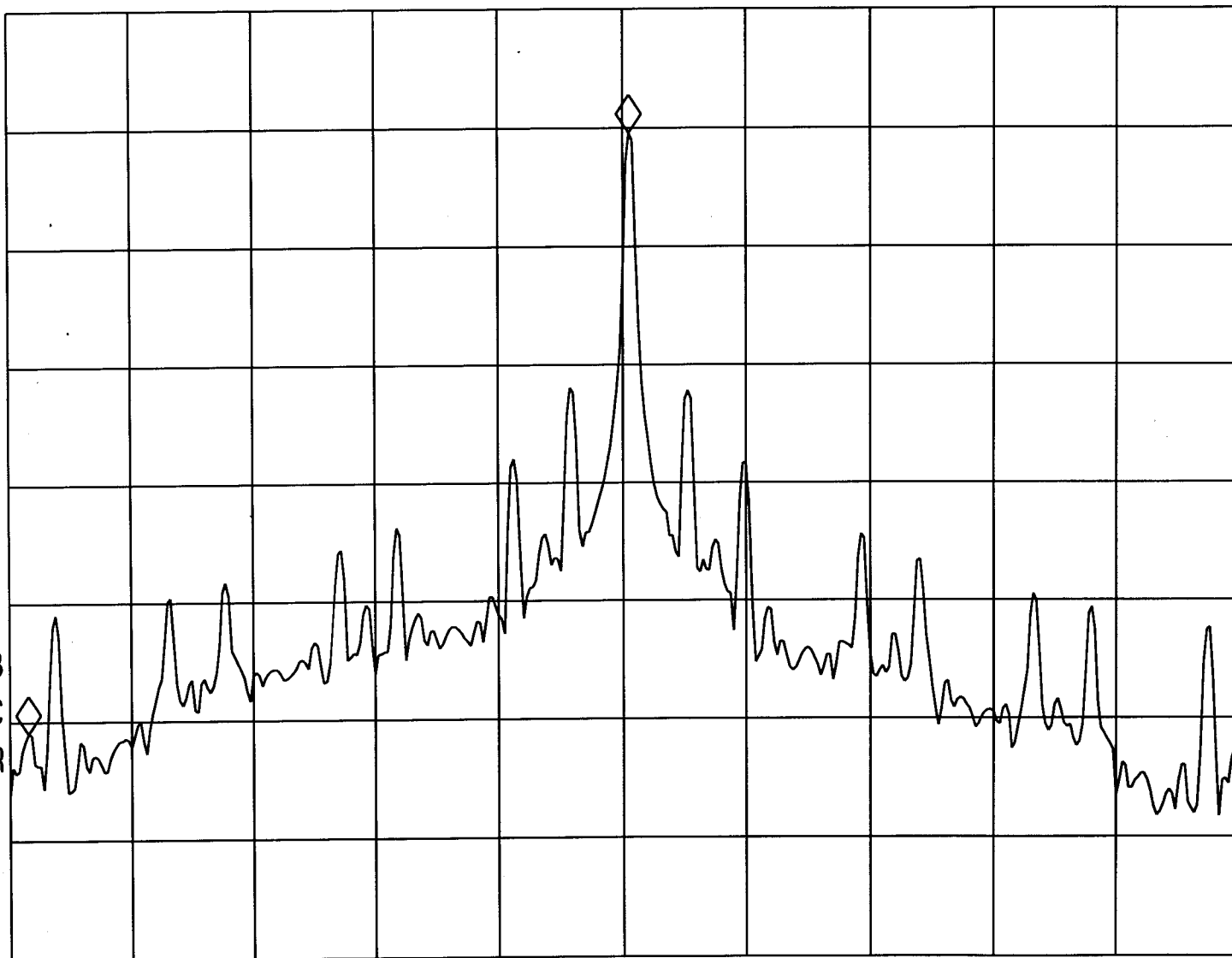
MKR -441.0 KHZ

REF 10.0 dBm

AT 20 dB

-50.59 dB

PEAK
LOG
10
dB/



Tested By: *[Signature]*
(*[Name]*)

Date: 29-11-04

Checked By: *[Signature]*
(*Anthony Chan*)

Date: 2/12/04

Test Result: Pass / Fail / NA

START 13.1100 MHz

STOP 14.0100 MHz

#RES BW 3.0 KHZ

VBW 3 KHZ

#SWP 750 msec