

LIGHTING YOUR TREE WAS  
NEVER MORE FUN AND FESTIVE...

Create your very own tree-lighting ceremony with the flip of a switch.  
Your Christmas lights will turn on when I talk and sing along to each song!



1. Plug in receiver.



2. Plug in your lights.



3. Listen as I talk and sing while your tree plays music and magically lights up!

PURCHASE ADDITIONAL RECEIVERS TO PLUG IN EVEN MORE LIGHTS!

TM, ® & © HALLMARK, INC. FOR, FABRIQUÉ POUR HALLMARK MARKETING COMPANY, LLC, KANSAS CITY, MO 64111

LIGHTS!  
MUSIC!  
MAGIC!  
IN ONE FLIP OF A SWITCH!

This device complies with Part 15 of the FCC Rules.  
Operation is subject to the following two conditions:  
1. This device may not cause harmful interference, and  
2. This device must accept any interference received,  
including interference that may cause undesired operation.

Le présent mécanisme respecte l'Article 15 des règlements de la FCC.  
Son utilisation est soumise aux deux conditions suivantes:  
1. Ce mécanisme ne doit pas causer d'interférence nuisible, et  
2. Ce mécanisme doit accepter toute interférence extérieure,  
y compris celle pouvant entraîner un mauvais fonctionnement.

CAN ICES-3 (2)/NBS-3 (2)

Wireless remote works from up to 50 feet.  
Use with Christmas light strings only.  
À utiliser avec des guirlandes lumineuses de Noël seulement.

- Light string combination should not exceed 750W.
- Not recommended for programmable light strings that are color-changing or have an internal light show.
- Not recommended for light strings that use a transformer for power. May cause malfunctions and distortion of sound.
- L'ensemble de guirlandes lumineuses branchées dans le récepteur ne doit pas dépasser 750 W.
- Non recommandé pour les guirlandes lumineuses à couleurs changeantes qui ont un programmeur ou celles comportant un spectacle de lumière interne.
- Non recommandé pour les guirlandes lumineuses qui utilisent un transformateur d'alimentation. Cela pourrait causer une distorsion de son et un dysfonctionnement.

Not a toy. Child supervision required. Adult supervision required. La supervision d'un adulte est requise.

Replaceable batteries included.

CAUTION: Do not mix old and new or different battery types.  
ATTENTION: Ne pas mélanger des piles usagées et neuves ou de types différents.

Please recycle or dispose of batteries properly.  
Recycle batteries before reuse.

Disconnect means: Type 10  
Pollution degree: 2  
Rated impulse voltage: 1500V  
Automatic action: 10,000 cycles  
Rating: 120VAC/60Hz/5A 750W Resistive



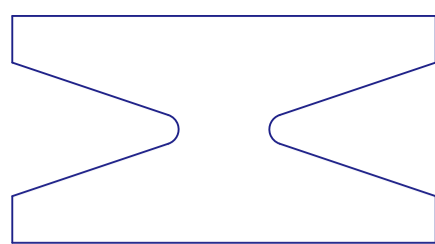
MADE IN CHINA  
8531 109  
HALLMARK.COM  
0633  
U.S.A. 87191 CANADA 877191

I PLAY  
5 CLASSIC  
HOLIDAY  
SONGS!

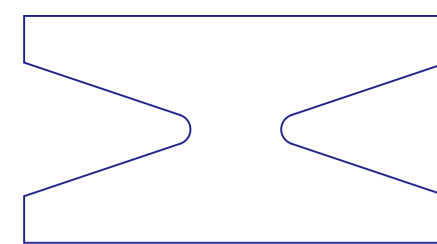
"Jolly Old St. Nicholas"  
"Deck the Halls"  
"O Christmas Tree"  
"Up on the Housetop"  
"12 Days of Christmas"

I light up your tree,  
wirelessly!

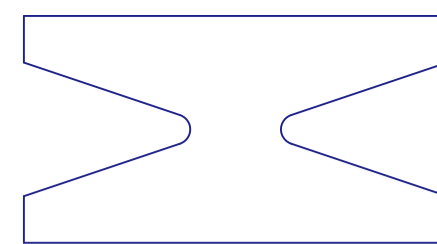
3+



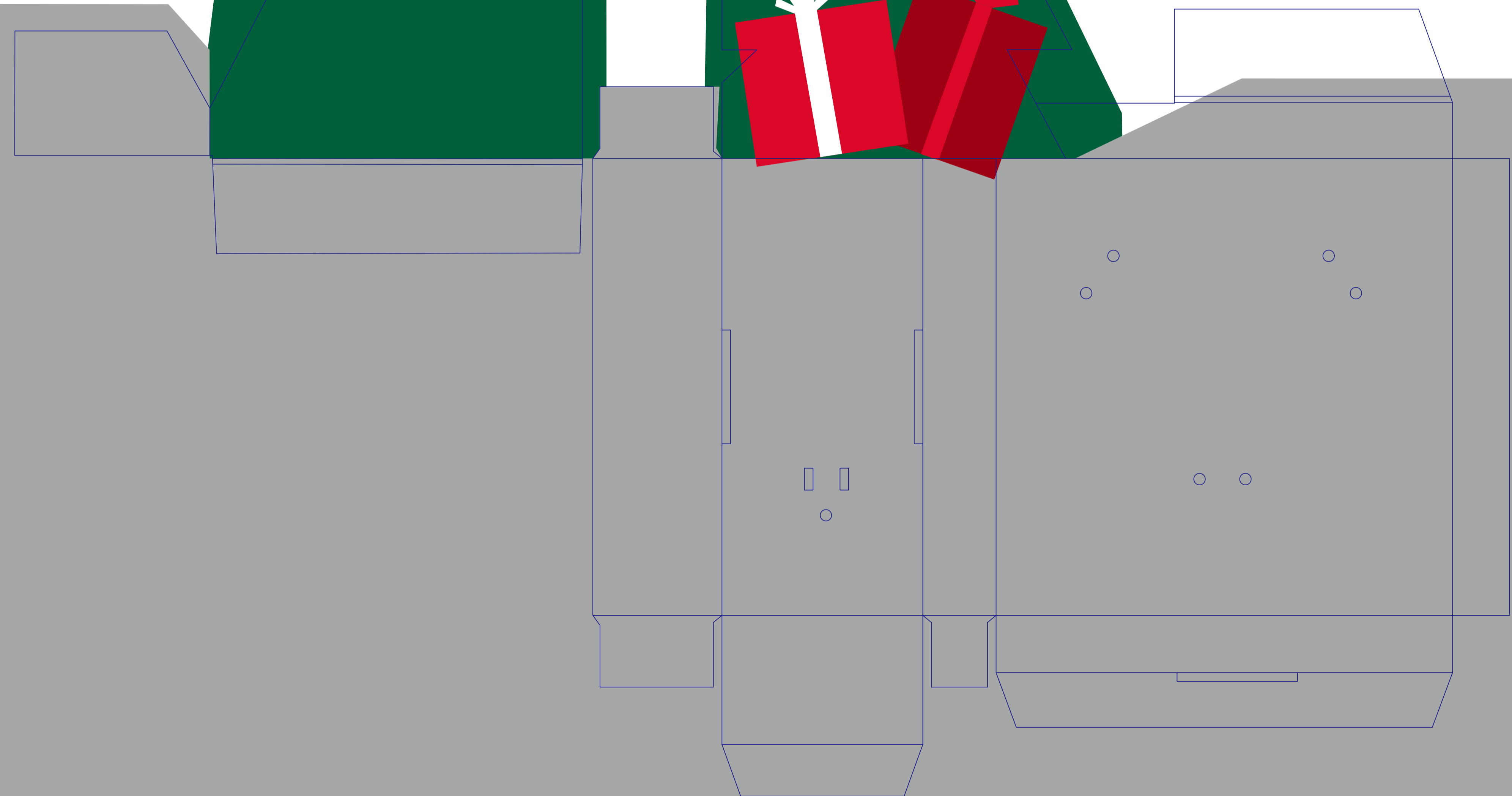
搭卡A



搭卡B



搭卡C



## SIZE:230X65MM

This device complies with Part 15 of the FCC Rules. Operation is subject to the following two conditions:

(1) this device may not cause harmful interference, and (2) this device must accept any interference received, including interference that may cause undesired operation.

Caution: Changes or modifications to this unit not expressly approved by the party responsible for compliance could void the user's authority to operate the equipment.

Note: This equipment has been tested and found to comply with the limits for a Class B digital device, pursuant to Part 15 of the FCC Rules. These limits are designed to provide reasonable protection against harmful interference in a residential installation. This equipment generates, uses and can radiate radio frequency energy and, if not installed and used in accordance with the instructions, may cause harmful interference to radio communications.

However, there is no guarantee that interference will not occur in a particular installation. If this equipment does cause harmful interference to radio or television reception, which can be determined by turning the equipment off and on, the user is encouraged to try to correct the interference by one or more of the following measures:

- Reorient or relocate the receiving antenna.
- Increase the separation between the equipment and receiver.
- Connect the equipment into an outlet on a circuit different from that of the receiver.
- Consult the dealer or an experienced radio/TV technician for help.

This device contains licence-exempt transmitter(s)/receiver(s) that comply with Innovation, Science and Economic Development Canada's licence-exempt RSS(s). Operation is subject to the following two conditions:

(1) This device may not cause interference:

(2) This device must accept any interference, including interference that may cause undesired operation of the device.

L'émetteur/récepteur exempt de licence contenu dans le présent appareil est conforme aux CNR d'Innovation, Sciences et Développement économique Canada applicables aux appareils radio exempts de licence.

L'exploitation est autorisée aux deux conditions suivantes :

(1) L'appareil ne doit pas produire de brouillage:

(2) L'appareil doit accepter tout brouillage radioélectrique subi, même si le brouillage est susceptible d'en compromettre le fonctionnement.

CAN ICES-3 (B)/NMB-3 (B)