

OVERVIEW Bitatek \ IT9000



BEFORE GETTING STARTED

1. Open the package and check every accessory:



⚠ CAUTION:

The device will be powered on when you install the battery pack. Please complete touch screen calibration for the first time usage, then turn the device off to charge the battery for at least 4 hours. Do not start using the device until the battery is charged for at least 4 hours. Always charge the battery at 0°C - 40°C (32°F ~ 104°F) environment temperature. The charger indicator light will turn green when battery charging is finished.

- ◆ Dimensions: 135(L) x 50(W) x 25(H) mm
- ◆ Weight: 170g including 1100mAh battery pack
190g including 2000mAh battery pack
- ◆ Operation Temperature: -10~50°C & Storage Temperature: -25~60°C

2. Install the battery pack

- 1) Detach and loose the hand-strap.
- 2) Remove the battery cover by pressing two release latches and pull out the battery cover.

⚠ CAUTION:

- ◆ Please follow the below procedures to install the battery into this device.
- ◆ Please insert the contact side (with four pins) of the battery first then gently push the battery into place. (see the below picture Figure I & Figure II)



- Replace the battery cover after installation is complete.
- Please ensure to lock two latches manually until you hear the latch "click" into place.



3. Connect Power Adapter to charge the Handy Terminal

- 1) Insert DC connector of Power adapter to DC-IN converter on USB Y cable.
- 2) Connect USB cable to system unit.
- 3) Connect power cord to power adapter.
- 4) Insert Power cord to AC outlet.



USING THE KEYPAD

The keypad comprises 23 keys and 1 scan buttons.

- 1) Press "Alpha" to enable Alpha Mode, then Icon "Alpha" shows at Task bar.
- 2) The "Alpha" Key allows the toggle between the numeric and alpha mode.
- 3) Press "Function" to enable Function mode, the "Function" icon will shows at Task bar.
- 4) Press "Function" to enable Function mode, the "Function" icon will shows at Task bar.

Position	Legend	Default	Alpha Function	Blue Function	Orange Function
1	ESC	ESC			
2	SCAN	SCAN			
3	ENT	ENT			
4	ALPHA	Alpha			
5	BKSP	Bksp	Windows Icon	;	Key Lock
6	Up	Up		←	Bright +
7	Down	Down		→	Bright -
8	F1	F1	Caps	F5	F9
9	F2	F2	Shift	F6	F10
10	F3	F3	Ins	F7	F11
11	F4	F4	Mute	F8	F12
12	1 Del	1	Del	\$	Ctrl
13	2 abc	2	a,b,c	@	Alt
14	3 def	3	d,e,f	Back Tab	Tab
15	4 ghi	4	g,h,i	+	%
16	5 jkl	5	j,k,l	-	(
17	6 mno	6	m,n,o	#)
18	7 pqrs	7	p,q,r,s	*	?
19	8 tuv	8	t,u,v	/	
20	9 wxyz	9	w,x,y,z	:	\
21	0	0	Space	,	=

FEDERAL COMMUNICATION COMMISSION INTERFERENCE STATEMENT

This equipment has been tested and found to comply with the limits for a Class B digital device, pursuant to Part 15 of the FCC Rules. These limits are designed to provide reasonable protection against harmful interference in a residential installation. This equipment generates, uses and can radiate radio frequency energy and, if not installed and used in accordance with the instructions, may cause harmful interference to radio communications. However, there is no guarantee that interference will not occur in a particular installation. If this equipment does cause harmful interference to radio or television reception, which can be determined by turning the equipment off and on, the user is encouraged to try to correct the interference by one of the following measures:

- ◆ Reorient or relocate the receiving antenna.
- ◆ Increase the separation between the equipment and receiver.
- ◆ Connect the equipment into an outlet on a circuit different from that to which the receiver is connected.
- ◆ Consult the dealer or an experienced radio/TV technician for help.

FCC CAUTION:

Any changes or modifications not expressly approved by the party responsible for compliance could void the user's authority to operate this equipment.

This device complies with Part 15 of the FCC Rules. Operation is subject to the following two conditions:

- (1) This device may not cause harmful interference, and
- (2) this device must accept any interference received, including interference that may cause undesired operation.

IMPORTANT NOTE:

Radiation Exposure Statement:

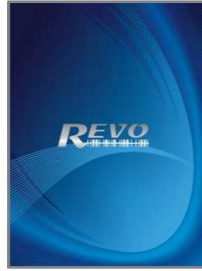
This equipment complies with FCC radiation exposure limits set forth for an uncontrolled environment. End users must follow the specific operating instructions for satisfying RF exposure compliance. To maintain compliance with FCC RF exposure requirements, please follow operation instruction as documented in this manual.

This transmitter must not be co-located or operating in conjunction with any other antenna or transmitter.

SETTING DEVICE

1. Initial Boot Up

The initial boot up step, the screen will be display when you install battery pack at the first time or when you press "Esc", "Enter", "Power" Key to do system cold boot. Don't remove battery pack when system is loading at initial boot up.

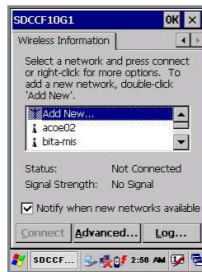


2. Setting Up Wireless LAN RF

After the initial boot up complete, The "SDCCF10G1" wireless LAN windows appear tab opens and asks you to configure wireless LAN RF settings.



- 1). Select "ThirdPartyConfig" profile item from Summit client utility, Wireless LAN window will be enabled after initial boot up complete, select Disable Wireless LAN from "Wireless communication" of control panel if you want disable it.
- 2). Tap on Wireless information from Microsoft Zero Configure utility.
- 3). Select the network you will access and tap the connect button or select Advance for more options.
- 4). If you want add a new network connection, double tap on "Add New" item from the list box.
- 5). Press Ok to save all your wireless settings.



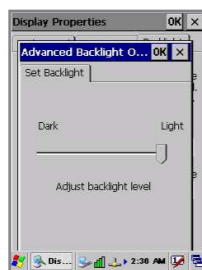
Note:

Microsoft Zero Configure utility and Summit Client utility are for the models Wireless LAN feature settings.

3. Brightness Setting

This device is equipped with backlight for LCD display. To adjust the LCD backlight brightness, press "Orange Fn" key and navigation Key "Up" or Press "Orange Fn" and navigation key "Down", to adjust display brightness. Or enter control panel to set brightness of LCD backlight.

- 1) Press "Start" → "Setting" → "Control Panel".
- 2) Double click "Display" icon, select "Backlight" page then press "Advance" button.



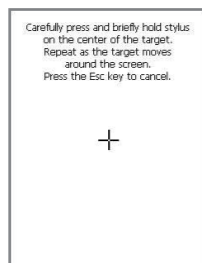
4. Date / Time Setting

- 1) To set date/time: When you first buy this device or when the device is initialized.
- 2) From Control panel application: Tap "Start" → "Setting" → "Control Panel" and execute "Date/Time".
- 3) Adjust it to meet your demand and tap "OK".



5. Calibrating Touch Screen

This calibration is already done by manufacturer. If you want to calibrate the touch screen again, please tap "Start" → "Setting" → "Control Panel" → "Stylus" → "Calibration" or press "F4" Key; And then, hold the "Stylus" → "Calibration" or on the center of each target as it moves around the screen.



CAUTION:

Be sure to use the supplied stylus or plastic-tipped pens for touch screen display. Don't use pencil, pen or any sharp object on touch screen display.

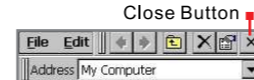
USING THE APPLICATION

1. Execute the "Application"

Tap an application icon on the desktop, or by Control Panel, or to tap "start" → "Programs" Select one of the applications.

2. Close the "Application"

Tap the tab of "x" to close the application.



3. Using the Software Input Panel

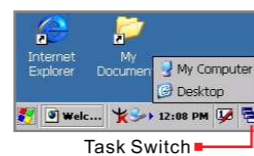
- 1) Tap the "stylus" icon on the task bar.
- 2) Tap the "keyboard" item.
- 3) When Software Input Panel appears, input letters with the Stylus.



4. Task Switch

Win CE can execute more than 2 applications at the same time.

- 1) Press "Task Switch" icon in the task bar.
- 2) Select the task you want in the task menu. During the execution of applications, when you select the menu "Desktop", then it hides, instead of closing, all the other applications.



BARCODE READING

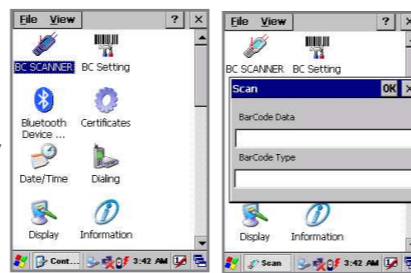
CAUTION:

Remove the protective film on Scanner window before using devices equipped with Scanner.

1. Execute barcode application

Tap "Start" → "Setting" → "Control Panel" and double click "BC scanner" Icon.

Note: This device is provided with a built-in utility "BC scanner" for barcode reader testing.



2. Aim the scan window at the barcode

Note: Remember to take off the coat which is on the scan window and does influence the reading sensitivity.

3. Press the scan key

Note: If the barcode scan failed, revise the reading angle or distance.

4. Aim the laser beam at the center of the barcode

5. Check the barcode reading result: failed or successful

You can verify the result of barcode reading by beep sounds or the LED indicator.



6. Barcode Scanning Position

This device can read from 4CM to 30 CM distance.

Note:

- 1) When the barcode is small for lasers scan position to close the barcode number. When the barcode is the larger for lasers scan to location away from the barcode number.
- 2) The reader can be detected by a red beam.



7. Incorrect Barcode scanning position

Scanning operations may fail if laser beam position as below.

Note:

This product scans using laser light. Never look directly into the laser light or shine the laser light into the eyes.



USING PERIPHERALS

1. Using Micro SD type Card

- 1) Remove the battery cover and take out the battery
- 2) Insert a correctly oriented Micro SD card.
- 3) Re-install the battery.
- 4) Replace and lock the battery cover
- 5) A "Storage Card" icon will appear under "My Device" folder on your desktop.

2. USB Connection

- 1) Generally it's used for synchronized data transmission with a desktop.
- 2) Use the USB cable to connect with PC and this device and preinstall Microsoft ActiveSync program version 3.8 or later on the PC site.

BATTERY PRODUCT SAFETY

Lithium-ion battery packs might get hot, explode, ignite and/or cause serious injury if exploded by abusive using. Please follow the safety warnings listed as below:

- Do not place the battery pack in fire or heat the battery.
- Do not install the battery pack backwards so the polarity is reserved.
- Do not connect the positive Battery pack with negative battery pack to each other with any metal object (like wire).
- Do not carry or store battery pack together with metal objects.
- Do not pierce the battery pack with nails, strike the battery pack with a hammer, step on the battery pack or otherwise put it to strong impacts or shocks.
- Do not solder directly onto the battery pack.
- Do not expose battery pack to liquid, or allow the battery contacts to get wet.
- Do not disassemble or modify the battery pack. The battery pack contains safety and protection devices, which, if damaged, may cause the battery pack to generate heat, explode or ignite.
- Do not discharge the battery pack using any device except for the specified device. When it is used in devices other than the specified devices, the battery pack can be damaged or its life expectancy reduced. If the device causes any abnormal current to flow, it may cause the battery pack to become hot, explode or ignite and cause serious injury.
- In the event the battery pack leaks and the fluid gets into one's eye, do not rub the eye. Rinse well with water and immediately seek medical care. If left untreated, the battery fluid could cause damage to the eye.

CAUTION:

RISK OF EXPLOSION IF BATTERY IS REPLACED BY AN INCORRECT TYPE. DISPOSE OF USED BATTERIES ACCORDING TO THE INSTRUCTIONS.

Mobile Computer Quick Guide



User and Product Safety

WARNING:



- ◆ Do not stare into the laser beam directly or shine it into eyes.
- ◆ Never use strong pressure onto the screen or subject it to severe impact, as the LCD panel could become cracked and possibility cause personal injury. If the LCD panel is broken, never touch the liquid inside, for such contact would irritate the skin.
- ◆ Although the Handy Terminal passed the test of IP54 standard for water and dust resistance, avoid prolonged exposure to rain or other concentrated moisture. For these conditions exceed the IP54 standard, and could result in water or other contaminants entering into the Handy Terminal.
- ◆ Use only the approved AC Adapter with the Handy Terminal. Use of an unapproved AC Adapter could result in electrical problems, or even cause a fire or electrical shock to the user.
- ◆ Be sure that only authorized supplier are allowed to disassemble and reassemble the device. If the device or parts have been damaged due to any wrong handling, shall void the product and parts warranty.
- ◆ Always make back-up copies of all important data. It is easy done by using a cable or Single Cradle (sold by optional) to transfer data to the computer. Manufacturer is not liable for any data loss caused by deletion or corruption by using of this device, or due to the drained battery.