

3.2.17 Owner

Table 3-16 Owner

ICON	ITEM & FUNCTION
Owner	<ul style="list-style-type: none"> ● “Identification” Tab : (Figure 3-15-1)
	<ul style="list-style-type: none"> ✓ Fill in or edit the data as desired.
	<ul style="list-style-type: none"> ✓ To have this information displayed when you start your device, select “Display Owner Identification” at Power On.
	<ul style="list-style-type: none"> ✓ To set up identification for remote networks, see Setting up identification for remote networks.
<ul style="list-style-type: none"> ● “Network ID” Tab: (Figure 3-15-2) 	
	<ul style="list-style-type: none"> ✓ Enter the user name, password, and domain name you use to log on to remote network.

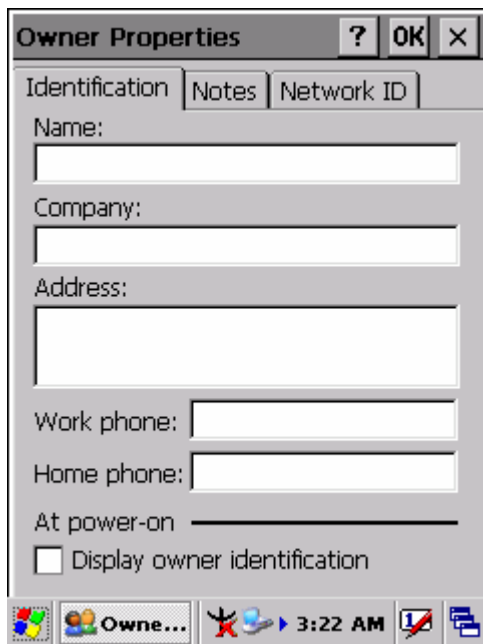


Figure 3-15-1

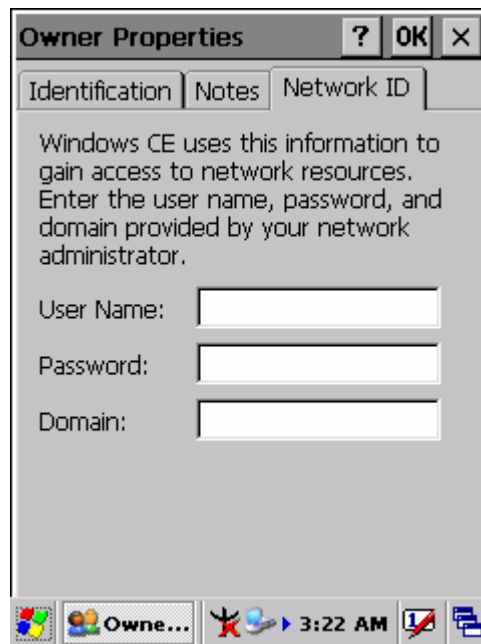


Figure 3-15-2

3.2.18 Password

Table 3-17 Password

ICON	ITEM & FUNCTION
Password	<ul style="list-style-type: none"><li data-bbox="427 416 1332 456">● “Password Setting” Tab : (Figure 3-16)<li data-bbox="427 465 1332 506">✓ Enter the password<li data-bbox="427 515 1332 555">✓ In the “Confirm password” box, enter the password again.<li data-bbox="427 564 1332 694">✓ To require the password on startup, select “Enable password protection at power on”. and/or select “Enable password protection for screen saver”<li data-bbox="427 703 1332 788">✓ To exit the Password control panel, press “OK” from the control bar, or press the <Enter> key on the keypad.



Figure 3-16

3.2.19 PC Connection

Table 3-18 PC Connection

ICON	ITEM & FUNCTION
PC Connection	<ul style="list-style-type: none"> • “PC Connection” Tab : (Figure 3-17-1) ✓ Select the first checkbox to enable direct connections to the desktop computer. (Figure 3-17-1) ✓ Tap the “Change Connection...” button to modify the connection method from USB, IrDA, or Serial. (Figure 3-17-2) ✓ To exit the “Change Connection” dialog, press “OK” from the control bar, or press the <Enter> key on the keypad. ✓ To exit the “PC Connection” properties control panel, press “OK” from the control bar, or press the <Enter> key on the keypad.

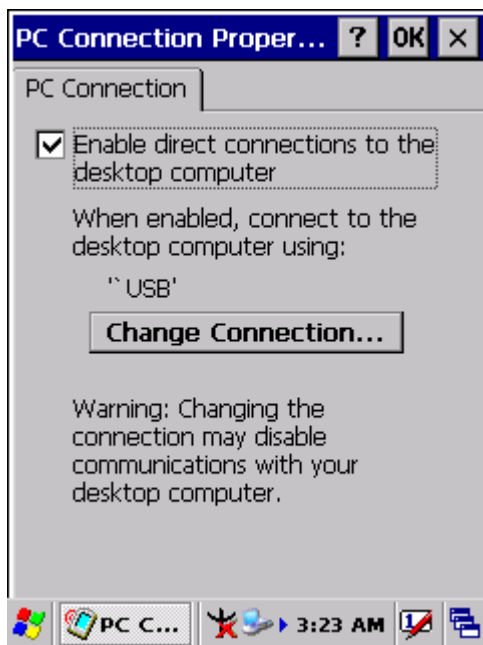


Figure 3-17-1

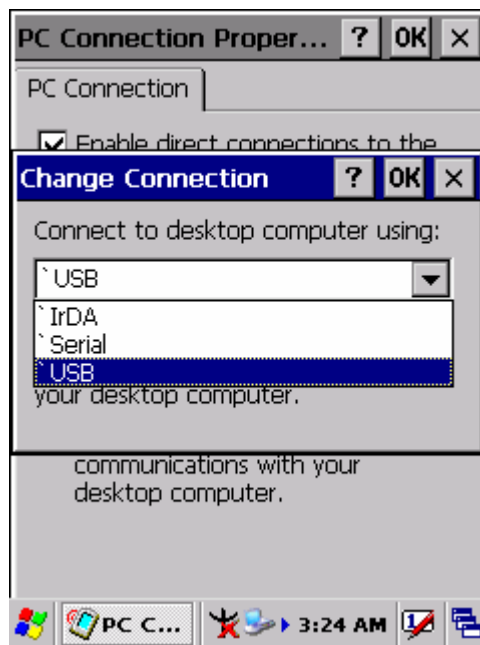


Figure 3-17-2

3.2.20 Power

Table 3-19 Power

ICON	ITEM & FUNCTION
Power	<ul style="list-style-type: none"> ● “Battery” Tab : (Figure 3-18-1)
	<ul style="list-style-type: none"> ✓ Provide change level indicators for Main battery and Backup battery. ✓ To exit Battery control panel, press “OK” from the command bar, or press <Enter> key on keypad.
	<ul style="list-style-type: none"> ● “Schemes” Tab: (Figure 3-18-2)
	<ul style="list-style-type: none"> ✓ The Scheme Tab allows you to determine the time to switch state to Suspend mode when using either Battery Power or AC Power. ✓ Select Battery Power or AC Power as the power scheme from the pull-down list.(Figure 3-18-2) ✓ Select the time to suspend mode from the pull-down list. (Figure 3-18-3)
	<ul style="list-style-type: none"> ● “Device Status” Tab: (Figure 3-18-4) <p>Provide power level of device – The power level ranges from “High(D0)” which means the device is at the highest power level to “Off(D4)” which means the device is at the lowest power level.</p>

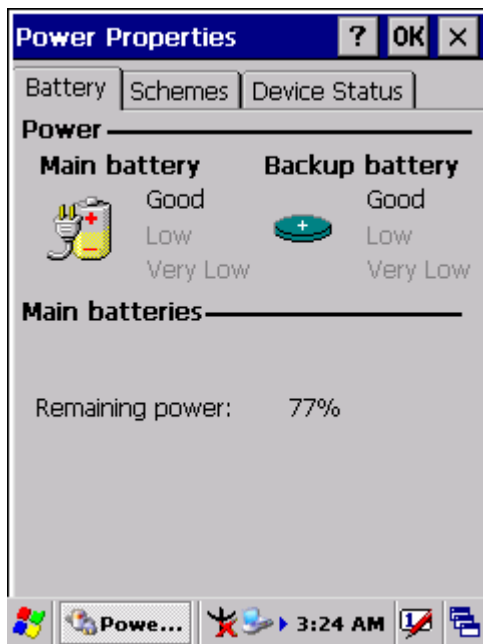


Figure 3-18-1

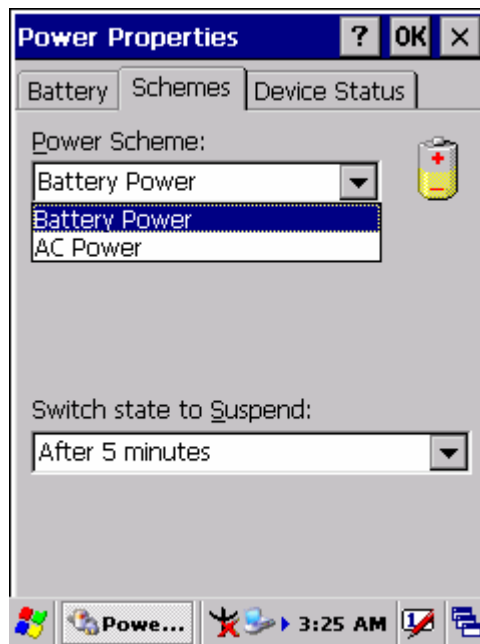


Figure 3-18-2

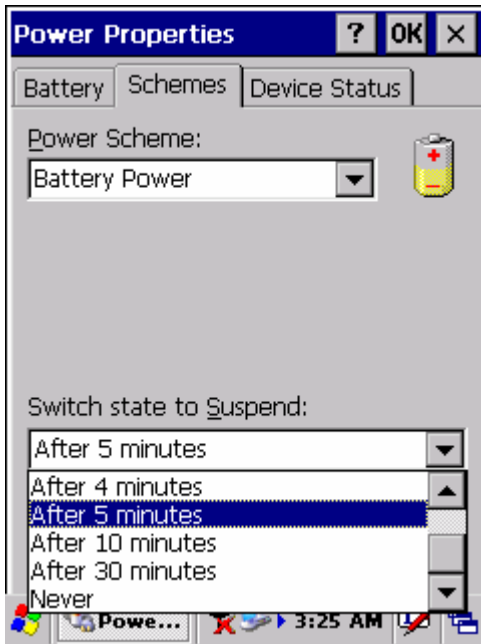


Figure 3-18-3

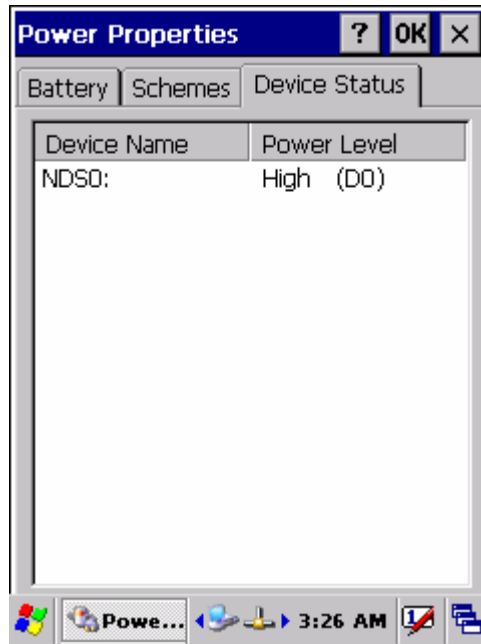


Figure 3-18-4

3.2.21 Regional Settings

Table 3-20 Regional Settings

ICON	ITEM & FUNCTION
Regional Settings	<ul style="list-style-type: none"> ● “Region” Tab : (Figure 3-19-1) ✓ Select the desired location/language. ✓ Review the Appearance samples in the bottom half of the screen. ✓ Select the Tab at the top for any settings you wish to change, Options to modify include Number, Currency, Time, and Date. (Figure 3-19-3 ~ Figure 3-19-9)

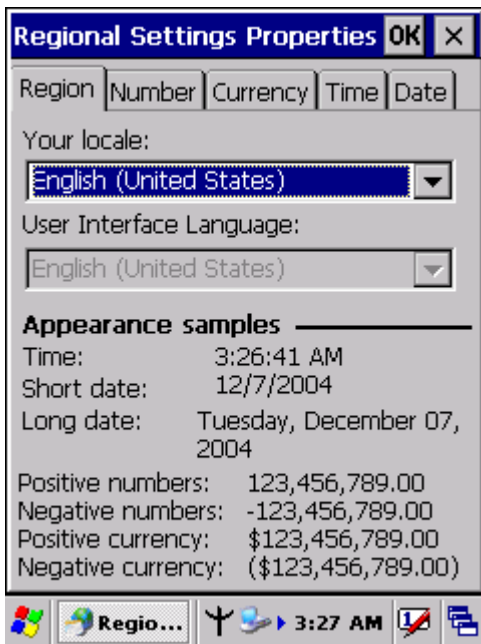


Figure 3-19-1

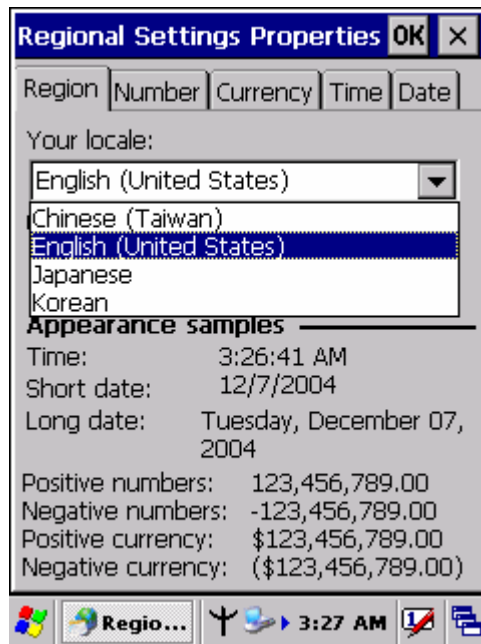


Figure 3-19-2

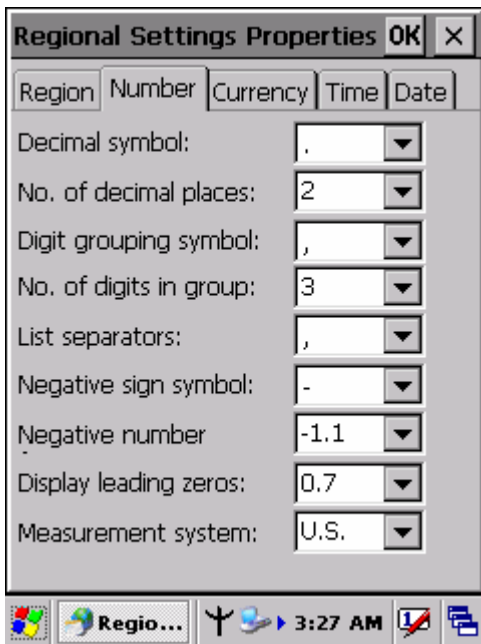


Figure 3-19-3

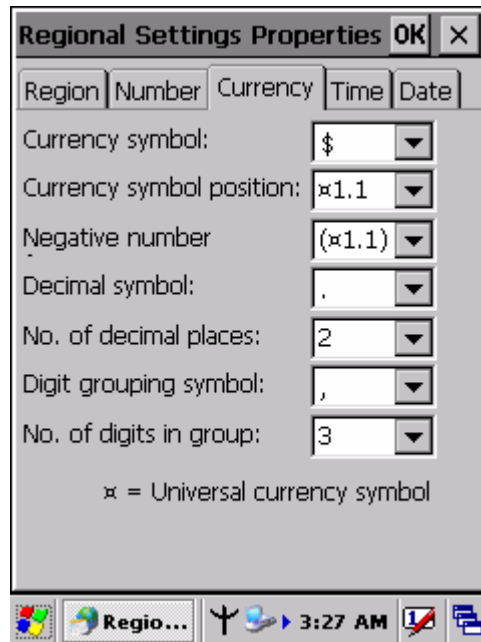


Figure 3-19-4

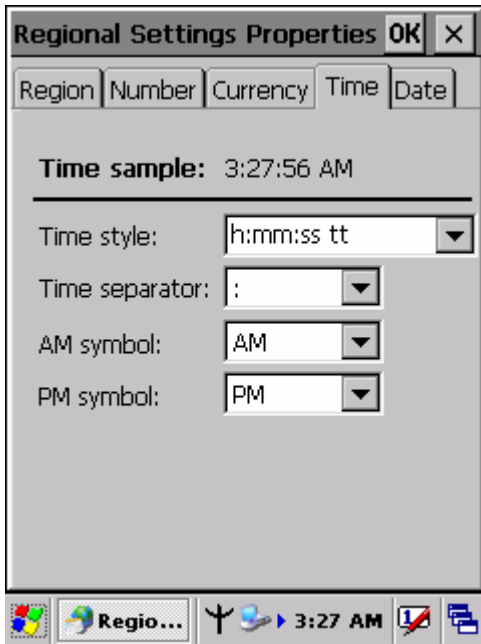


Figure 3-19-5

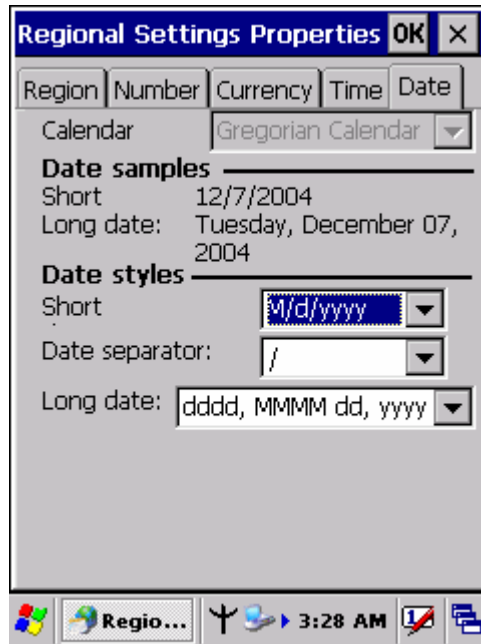


Figure 3-19-6

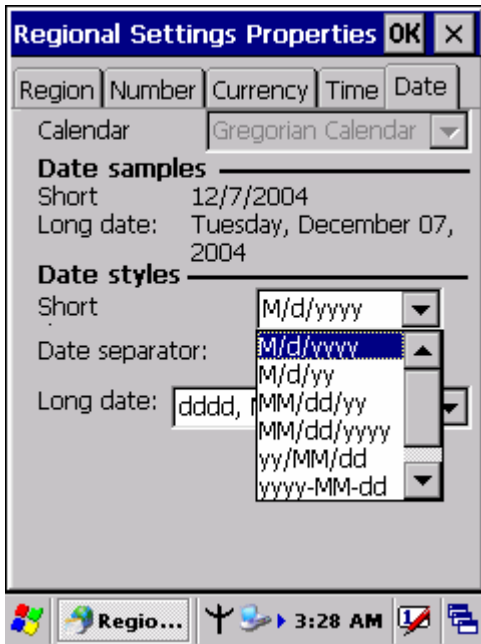


Figure 3-19-7

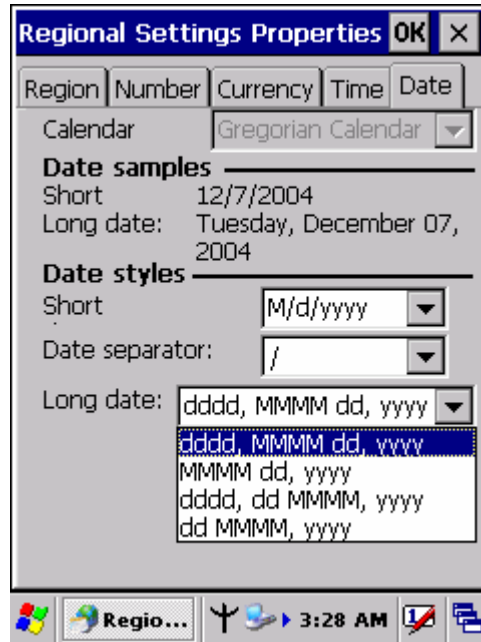


Figure 3-19-8

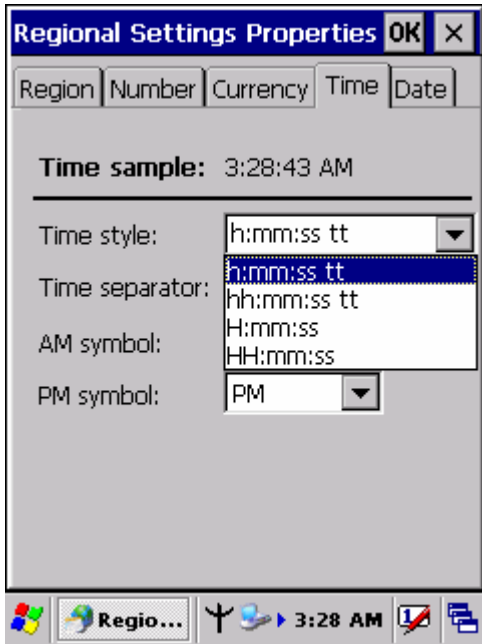


Figure 3-19-9

3.2.22 Remove Programs

Table 3-21 Remove Programs

ICON	ITEM & FUNCTION
Remove Programs	<ul style="list-style-type: none"> ● “Remove Programs” Tab : ✓ Only user installed programs can be removed. ➤ Select the program you wish to remove from the list and press “remove” button.

3.2.23 Storage Manager

Table 3-22 Storage Manager(A)


ICON	ITEM & FUNCTION
 Storage manager	<ul style="list-style-type: none"> ● “Storage Manager” Tab : (Figure 3-20) ✓ To change Storage properties control panel default settings: Insert. Compact Flash(CF) or Secure digital (SD) storage card into the unit. ➤ Select Start > Settings > Control Panel > Storage Properties

Table 3-22 Storage Manager(B)


ICON	ITEM & FUNCTION
 <p>Storage manager</p>	<ul style="list-style-type: none"> • “Storage Manager” Tab : (Figure 3-20) ➤ From the “Storage Info” pull-down list, select the desired storage device. ➤ You can also format, dismount, and create partitions on storage devices using this control panel. ➤ To save and exit the Storage Properties control panel, press “OK” from the control bar, or press the <Enter> key on the keypad. <p>Caution: Dismounting or formatting the DiskOnChip will erase all files and program stored in Flash Memory</p>



Figure 3-20

3.2.24 Stylus

Table 3-23 Stylus(A)

ICON	ITEM & FUNCTION
Stylus	<ul style="list-style-type: none"> ● “Double-Tap” Tab : (Figure 3-21-1,Figure 3-21-2) <hr style="border-top: 1px dashed black;"/> <ul style="list-style-type: none"> ✓ Double-tap the checkerboard grip at a comfortable speed. ✓ Double-tap clapboard to test your settings ✓ The function is OK if the figures are changed from Figure 3-21-1 to Figure 3-21-2. ✓ To tap “OK” to exit the Stylus Properties.
	<ul style="list-style-type: none"> ● “Calibration”’: (Figure 3-21-3) <hr style="border-top: 1px dashed black;"/> <ul style="list-style-type: none"> ✓ In the Welcome Wizard, you tapped a target with the stylus to set the amount of pressure needed for the screen to respond to your stylus taps. ✓ Please also see 2.4.3: Calibration of the touch Screen

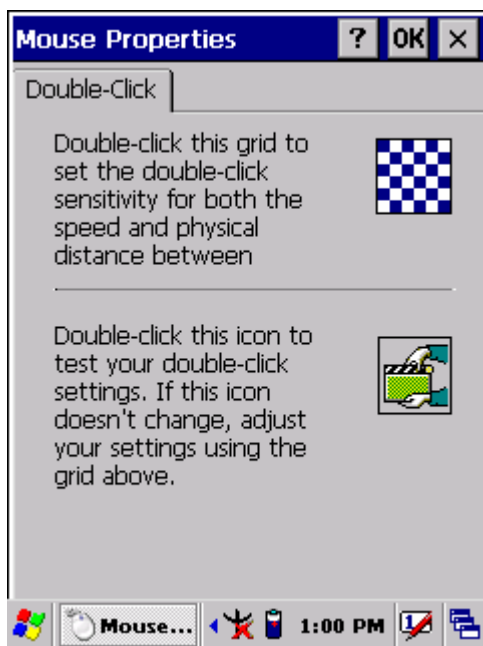


Figure 3-21-1

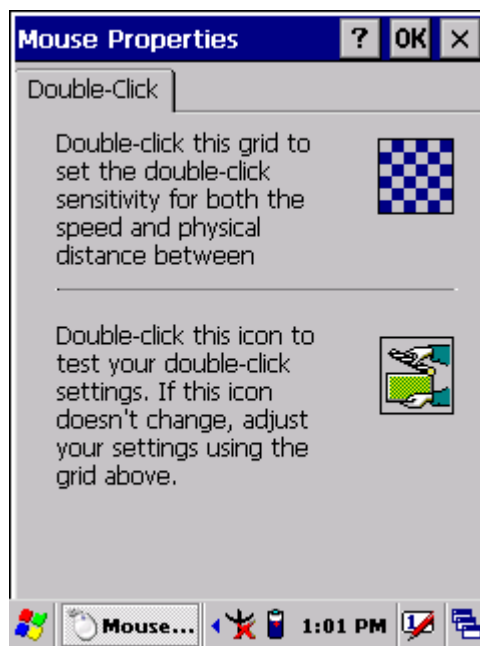


Figure 3-21-2

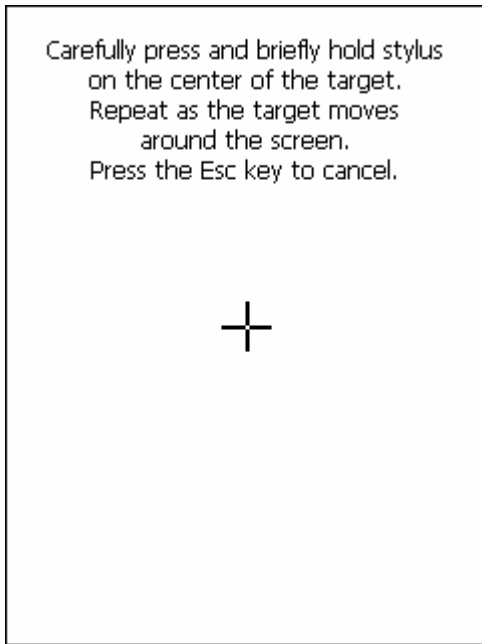


Figure 3-21-3

3.2.25 System

Table 3-24 System(A)

ICON	ITEM & FUNCTION
System	<ul style="list-style-type: none"> ● “General” Tab : (Figure 3-22-1)
	<ul style="list-style-type: none"> ✓ To show: <ul style="list-style-type: none"> ➤ Firmware information ➤ Information about Processor type, Memory size, Expansion card
	<ul style="list-style-type: none"> ● “Memory” : (Figure 3-22-2)
	<ul style="list-style-type: none"> ✓ Move the slider to adjust memory allocation. Default storage memory is normally is normally set to about 8MB with the reminder assigned to Program memory. ✓ Press the “OK” key on the Keypad. <p>Note: the difference is occupied by OS between the RAM size in Information properties and total memory size of storage memory and program memory</p>

Table 3-24 System(B)

ICON	ITEM & FUNCTION
System	<ul style="list-style-type: none"> ● “Device Name” Tab : (Figure 3-22-3) ✓ Your device uses this information to identify itself to other computers. ✓ The input panel will open to facilitate data entry. ✓ To close the Device Name , press the “OK” button, or press the <Enter> key on keypad.
	<ul style="list-style-type: none"> ● “Copyrights” Tab: (Figure3-22-4) ✓ Refer to this tab for specific copyright data. As a user, you are responsible to read this statement.

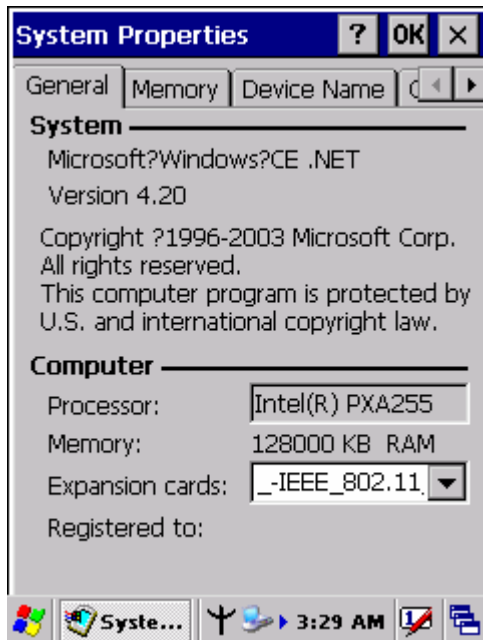


Figure 3-22-1

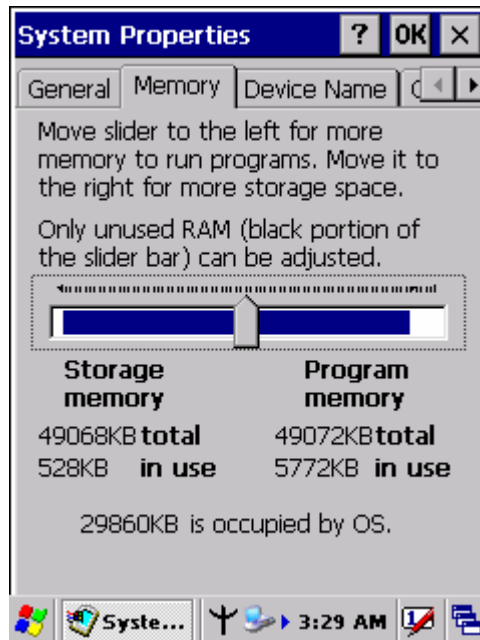


Figure 3-22-2



Figure 3-22-3

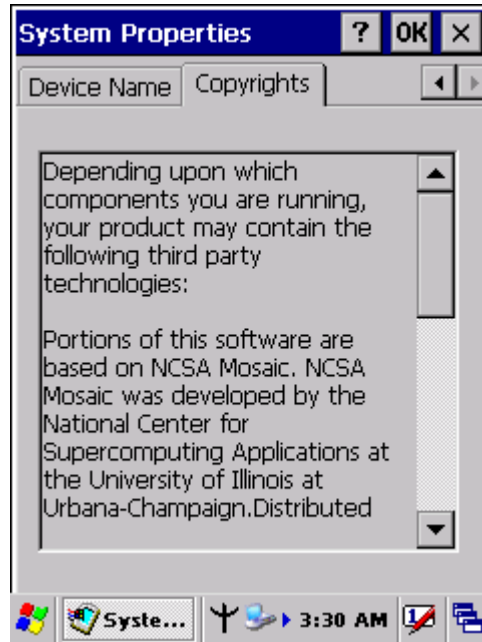


Figure 3-22-4

3.2.26 Volume & Sounds Properties

Table 3-25 Volume & Sound

ICON	ITEM & FUNCTION
Volume & Sound	<ul style="list-style-type: none"> ● “Volume” Tab : (Figure 3-23-1) ✓ The factory default for Volume is the forth level. You can adjust the volume to your environment and comfort. <ul style="list-style-type: none"> ➤ Set the volume by adjusting the slider from Soft to Loud, or press Right or Left edge of Navigation keys
	<ul style="list-style-type: none"> ● “Sounds” Tab: (Figure3-23-2) ✓ Enable the desired sounds for key clicks, screen taps, notifications, and applications.

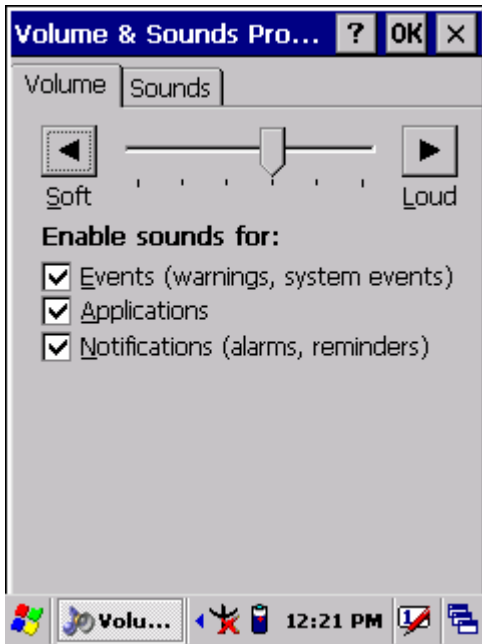


Figure 3-23-1

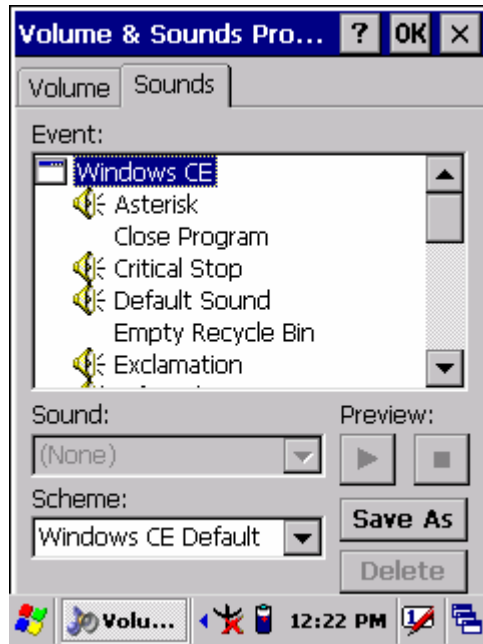


Figure 3-22-2

3.3 Taskbar and Start Menu

Table 3-26 Taskbar and Start menu

ICON	ITEM & FUNCTION
Taskbar and Start Menu	<ul style="list-style-type: none"> ● “General” Tab :
	<ul style="list-style-type: none"> ✓ In this tab, You can change the position of the Taskbar and Start menu <ul style="list-style-type: none"> ➤ Is always on top or not ➤ Auto hide or not ➤ Show Clock or not
	<ul style="list-style-type: none"> ● “Advanced ” Tab:
	<ul style="list-style-type: none"> ✓ Tap the “Clear” button to remove the contents of the Documents Menu. ✓ Enable “ Expand Control Panel ” to list all icons of Control Panel from top to bottom.

Chapter 4

Communication

4.1 Installing & Setting Up Microsoft ActiveSync

4.1.1 Installing Microsoft ActiveSync on the Host PC

Microsoft ActiveSync is a file transfer tool to synchronize the files on a PC with the files on your PDA.

To install Microsoft ActiveSync, complete the following steps on the PC:

1. Go to the Microsoft Windows CE.NET website and download the most current version of ActiveSync:

<http://www.microsoft.com/mobile/pockeypc/downloads/>.

2. Install the most version of Microsoft ActiveSync on the host PC.
3. Open ActiveSync.
4. Select **File > Communication Settings** from ActiveSync's menu bar.
5. Go to "**Using ActiveSync**" on page X.X to continue using ActiveSync.

4.1.2 Connecting PDA to Host PC

1. You can use either the USB/Serial(RS232) port of Single Dock or a USB/Serial(RS232) cable to connect the PDA to the Host PC.
 - To use the dock, you must first insert the PDA into the slot, making sure that the unit is firmly seated the dock.
 - To use the cable, connect the USB/Serial cable to the PDA.
2. Connect the USB/Serial dock or cable to the Host PC's serial port or USB port.
3. Connect the dock or PDA to the power adapter and power source.

4.2 Using ActiveSync

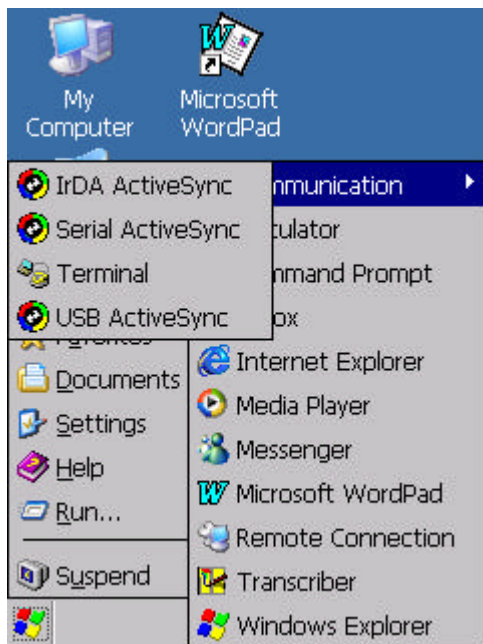
Use ActiveSync to transfer and synchronize files between the PDA and the Host PC.

4.2.1 Setting up a Partnership

During the Microsoft ActiveSync installation, you were prompted to create a

partnership with your mobile device. When you set up a partnership, you select synchronization and file conversation settings, which are contained in a file on your desktop computer. This file enables your desktop computer to recognize your device. Only devices that have a partnership with a desktop computer can synchronize information between the two computers.

For more information on partnerships, please refer to your Microsoft ActiveSync documentation or help file.



Transferring Files:

To transfer files, complete the following steps on the host PC:

- ✓ Select **Start > Programs > Communication > (IrDA, Serial, or USB) ActiveSync**.
 - ✓ Double-click on the selected **ActiveSync** icon
 - ✓ After you have established a connection with PDA, tap the “**Explore**” button at the top of the **ActiveSync** window (or select **Explore** from the File menu).
- ✓ Navigate to the target directory on your PDA and copy the desired file by using the **Copy/paste** method or dragging and dropping the desired file(s) into the folder.

4.2.2 ActiveSync File Synchronization

ActiveSync files synchronization requires an ActiveSync partnership between the PDA and the Host PC. Refer to “Setting up a Partnership”, above:

- ✓ Select the files in the synchronization configuration for the PDA partnership.
- ✓ Select **Tools > Options** from the ActiveSync command bar to configure the synchronization options.
- ✓ Place the file to be synchronized in the **Synchronization** folder created you’re **My Documents** directory. Defaults to the desktop. During the ActiveSync connection, all files in the **Synchronization** folder will be synchronized to the **\My Documents** directory on the PDA.

4.2 Networking

Please see the **3.2.17 Owner, Table 3-16 Owner** on page 3-50 for **setting up the network ID**. And see the **2.5.6 Initiating a Network Connection** to setup the 802.11b Wireless LAN for RF connecting.