

Figure 3-4-5

3.2.5 Certificates

Certificates are used by some applications for establishing trust and for secure communications.

Certificates are signed and issued by certificate authorities and are valid for a prescribed period of time. Windows CE manages multiple certificate stores.

Table 3-4 Certificates(A)

ICON	ITEM & FUNCTION
Certificates	<ul style="list-style-type: none"> ● “Store” Tab (Figure 3-5-1) : ✓ In the Stores tab, select the certificate store you wish to view or modify from the drop-down list (Figure 3-5-2). ✓ The “Trusted Authorities” store lists the top-level certificates for authorities you trust.(Figure 3-5-2 , Figure 3-5-3) ✓ The “My Certificates” store contains your personal certificates, which you use to identify yourself. ✓ Intermediate certificate authorities that help establish a chain of trust are stored in the “Other Authorities” store.

Table 3-4 Certificates(B)

ICON	ITEM & FUNCTION
Certificates	<ul style="list-style-type: none"> • “Store” Tab : ✓ To add a certificate or associated private key to the selected store, select “Import” (Figure 3-5-4). ✓ To view more details of the selected certificate, such as the expanded name or expiration date, choose “View”. ✓ To delete the selected certificate from the store, choose “Remove”.



Figure 3-5-1

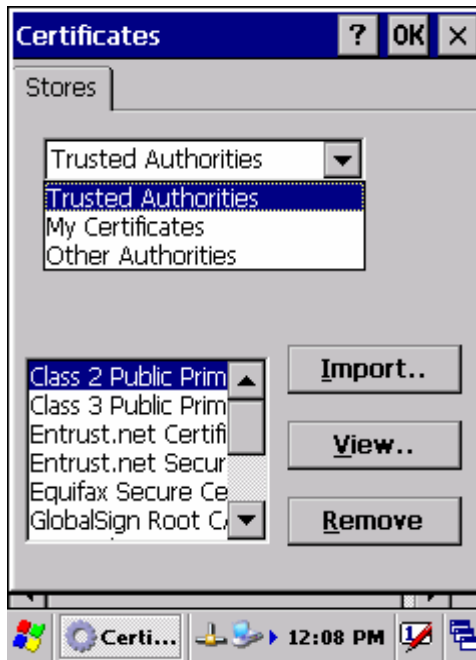


Figure 3-5-2



Figure 3-5-3

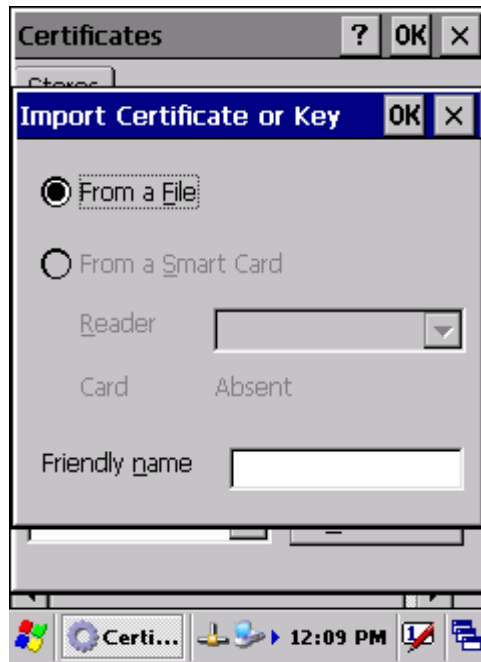


Figure 3-5-4



Figure 3-5-5

3.2.6 CPU Speed

Table 3-5 CPU Speed

ICON	ITEM & FUNCTION
CPU Speed	<ul style="list-style-type: none">• “CPU Speed” Tab :(Figure 3-6) <ul style="list-style-type: none">✓ Provide the information of current CPU Speed.✓ To change the CPU Speed , select the desired CPU speed you want. < 100 MHz, 200MHz, 300MHz, 400MHz >

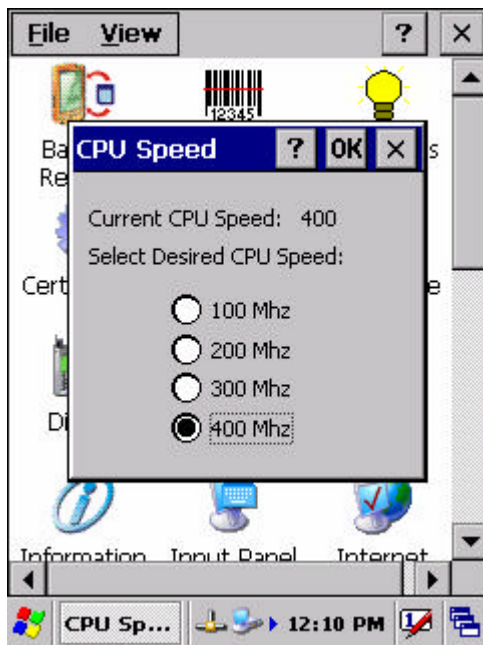


Figure 3-6

3.2.7 Date/Time

Table 3-6 Date/Time

ICON	ITEM & FUNCTION
Date/Time	<ul style="list-style-type: none"> ● “Date/Time” Tab : (Figure 3-6) ✓ Please see the detail information of 2.5.1 Setting Time and Date on P2-22

3.2.8 Dialing Properties

Table 3-7 Dialing properties(A)

ICON	ITEM & FUNCTION
Dialing Properties	<ul style="list-style-type: none"> ● “Dialing Properties” Tab : (Figure 3-7-1) ✓ In the When dialing from list, select the “Location” where you want to change settings.(Figure 3-7-2) ✓ To create a new location, select “New”. Enter the name of the location, and then select “OK”.(Figure 3-7-3) ✓ Enter or edit the area code and local country code as needed. ✓ In Dial using, select “Tone dialing” or “Pulse dialing”. Most phone lines are tone. ✓ To automatically disable call waiting, select “ Disable call waiting by dialing ”, select the appropriate number sequence in the list, or enter a new sequence. ● Editing dialing patterns (Figure 3-7-4) ✓ Using the codes listed in the topic, revise the dialing patterns as needed. <p>Notes:</p> <ul style="list-style-type: none"> ■ If you need to use character other than the ones listed here, use manual dialing. ■ Hyphens and spaces in dialing strings are ignored. ■ Some modems may not respond to the following characters, even though your device lets you add them to the dial string.



Figure 3-7-1

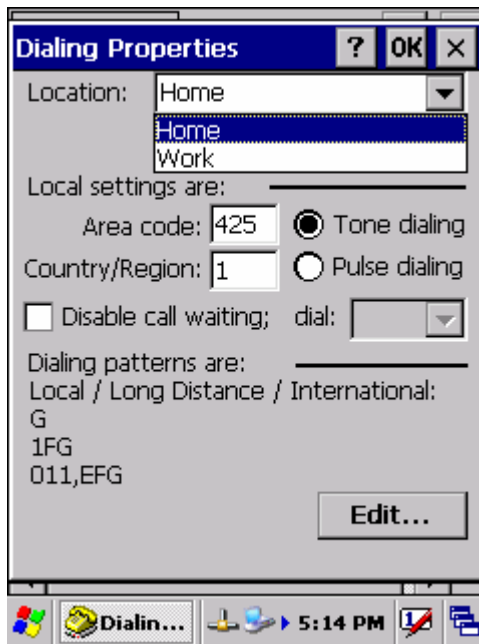


Figure 3-7-2

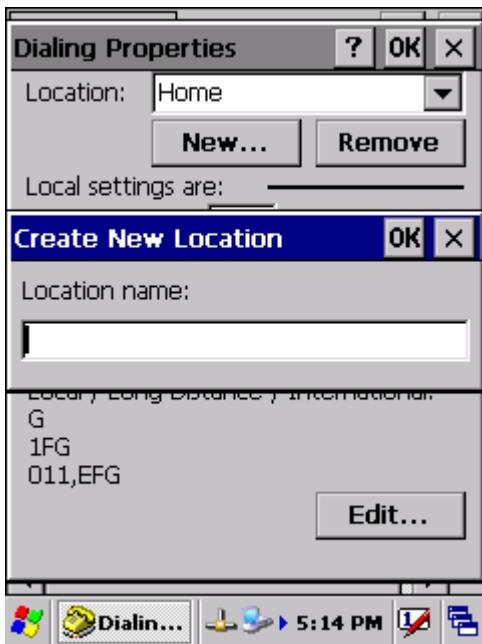


Figure 3-7-3

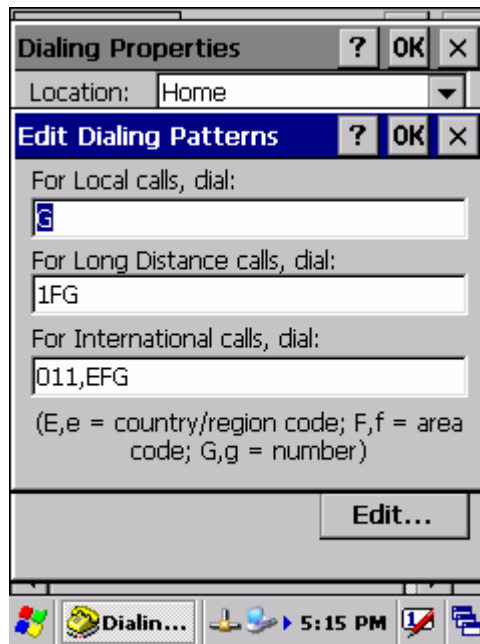


Figure 3-7-4

3.2.9 Display Properties

Table 3-8 Display properties(A)

ICON	ITEM & FUNCTION
Display	<ul style="list-style-type: none"> ● “Background” Tab :(Figure 3-8-1) <hr/> <ul style="list-style-type: none"> ✓ From the “Image” list, select an image you want as the background of the desktop.(Figure 3-8-2) ✓ To locate an image in another folder, select “Browse”.(Figure 3-8-3) ✓ To have the image cover the entire background, select “ Tile image on background”
	<ul style="list-style-type: none"> ● “Appearance” Tab(Figure 3-8-4) <hr/> <ul style="list-style-type: none"> ✓ Change the color scheme :(Figure 3-8-5) <ul style="list-style-type: none"> ➤ From the ” Scheme ” list, select a scheme. ➤ View your choice in the preview box. If you like the scheme, select “Apply”. ✓ Create a custom color scheme: <ul style="list-style-type: none"> ➤ From the “Item” list, select a display item. ➤ From the “Basic colors ” list, select a color, and select “OK”. ➤ View your color selection(s) in the Preview box. ➤ To save the scheme, select “Save”. ➤ In the “Save this color scheme as” box, enter a name for the scheme, and select “OK”. ➤ Select “Apply”.

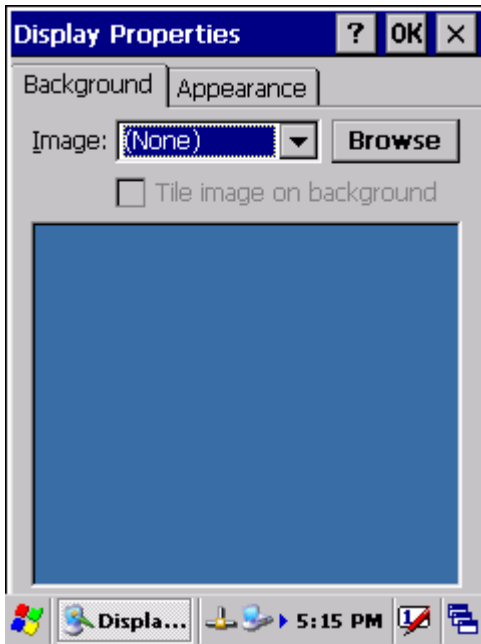


Figure 3-8-1

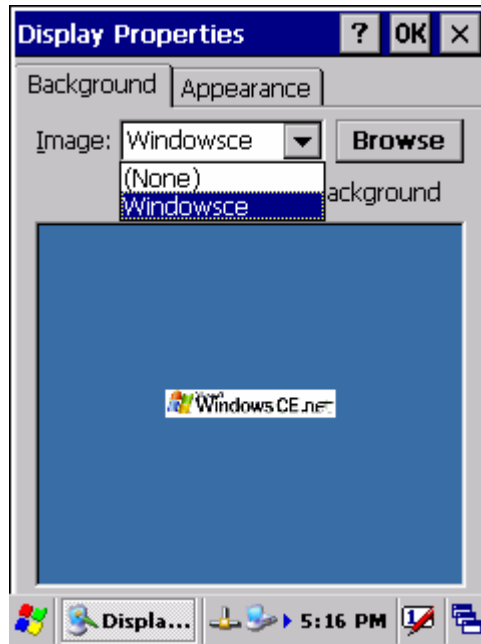


Figure 3-8-2

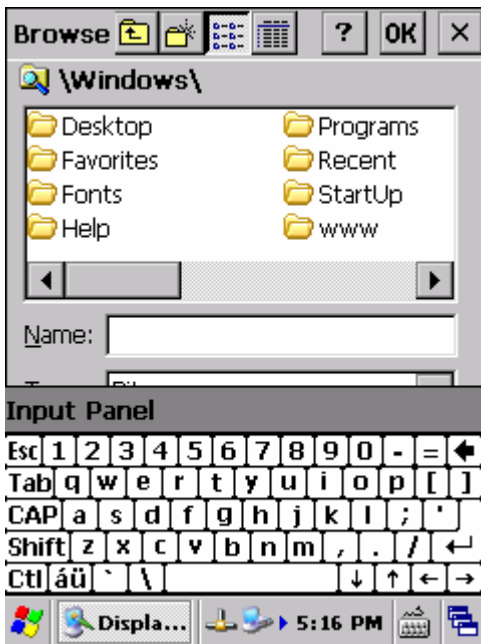


Figure 3-8-3

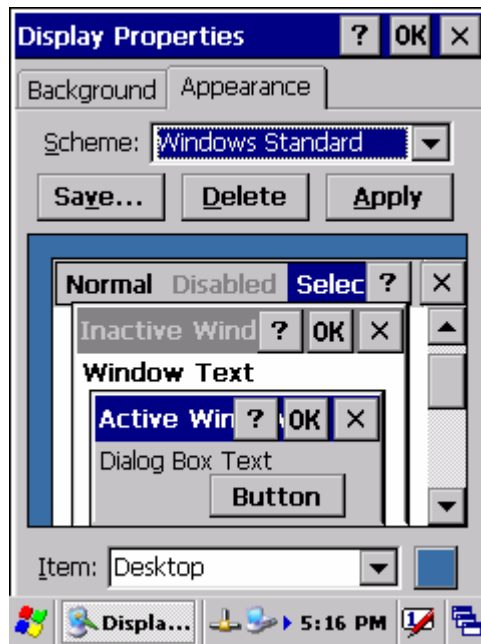


Figure 3-8-4

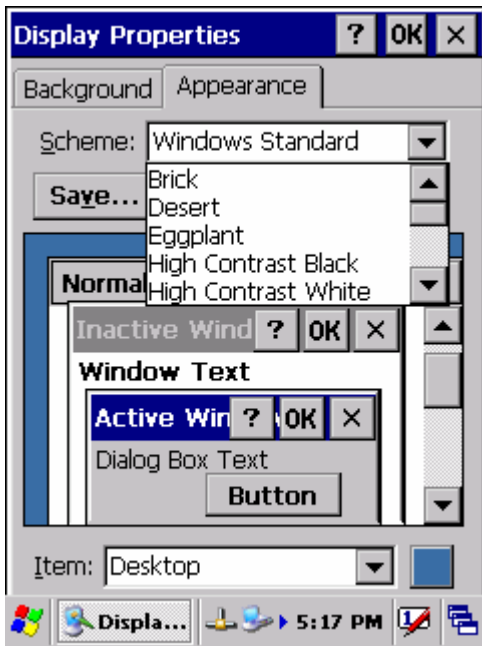


Figure 3-8-5

3.2.10 Fkey Settings

Table 3-9 FKey (A)



ICON	ITEM & FUNCTION
 FKey Setting	<ul style="list-style-type: none"> ● “Hot keys” Tab :(Figure 3-9-1) ✓ Assign your hot keys to wakeup system after it goes into sleep mode. ✓ To select which key(s) that can wakeup system, then, tap “OK”. < F1 key, F2 key, F3 key, F4 key and Scanner Buttons> <hr/> <ul style="list-style-type: none"> ● “AP Settings” Tab(Figure 3-9-2) ✓ To assign your favorite application program to F1,F2,F3 and F4 hot keys. ✓ Choose one of F1, F2, F3 and F4 from pull-down list.(Figure 3-9-3) ✓ To tap “ Open” inside “Assign program” applet. ✓ Select one application program you want from program list, Then, choose “OK”. (Figure 3-9-4) ✓ To tap Default tab to return back to default setting. (Figure 3-9-2)

Table 3-9 FKey (B)

ICON	ITEM & FUNCTION	
 FKey Setting	<ul style="list-style-type: none"> • “AP Settings” Tab(Figure 3-9-2) 	
	<ul style="list-style-type: none"> ✓ The default setting for F1~F4: 	
	F Key	Name of Application Program
	F1	Internet Explorer
	F2	WordPad
	F3	Inbox
F4	My Computer	

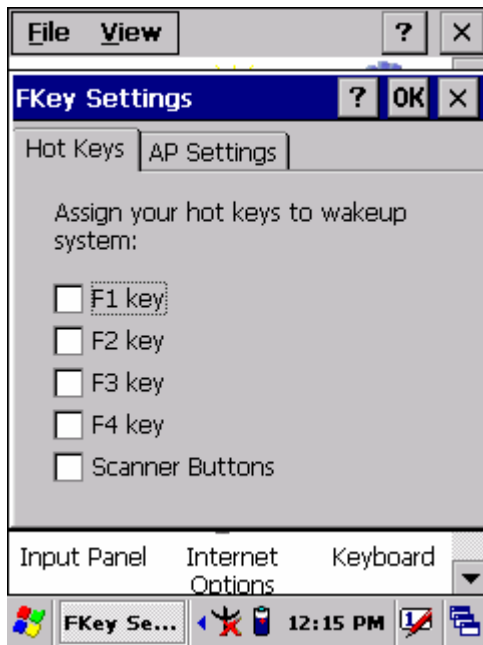


Figure 3-9-1

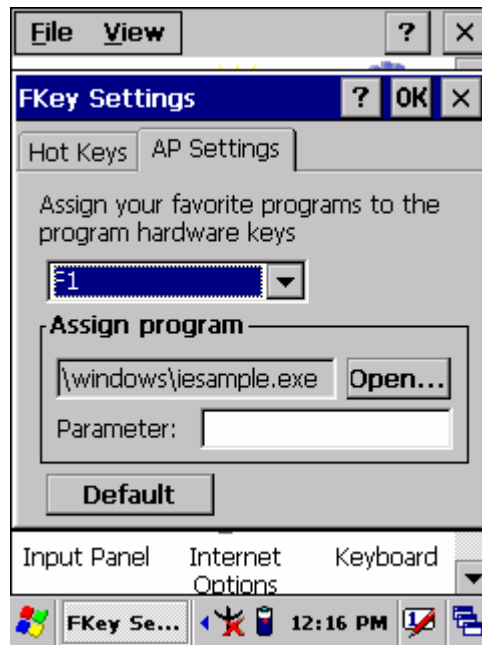


Figure 3-9-2

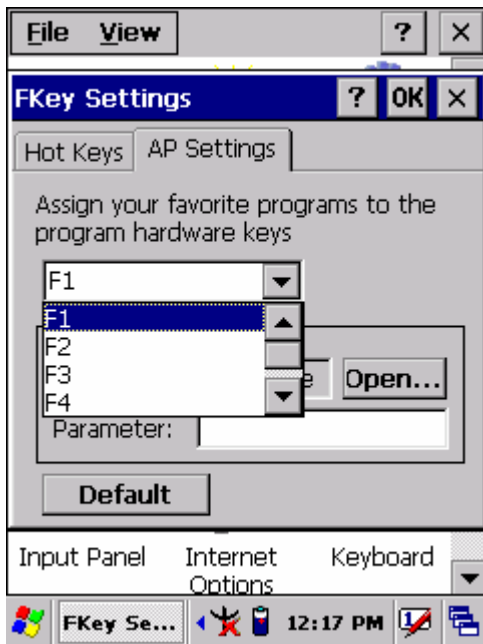


Figure 3-9-3

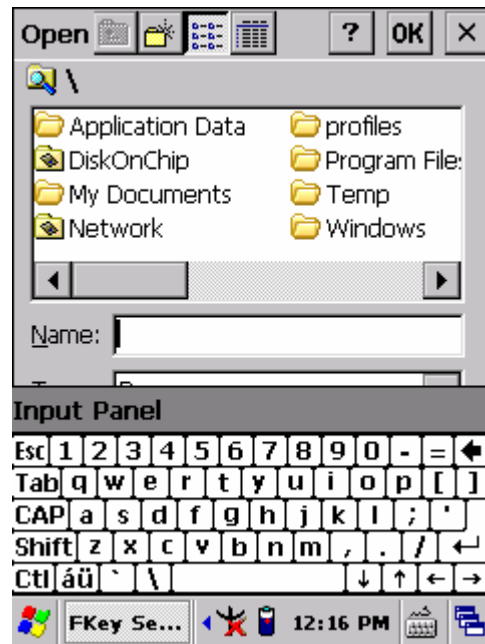



Figure 3-9-4

3.2.11 Information

Table 3-10 Information

ICON	ITEM & FUNCTION
 Information	<ul style="list-style-type: none"> • “Information” Tab : ✓ Provide hardware version, Software version, ROM size, RAM size, Serial No. and Configuration No.

3.2.12 Input Panel

Table 3-11 Display properties(A)


ICON	ITEM & FUNCTION
 Input Panel	<ul style="list-style-type: none"> • “Input panel” Tab :(Figure 3-10-1) ✓ Select the input method you want to change. ✓ To change the Soft Keyboard Options , tap “Option” (Figure 3-10-2)

Table 3-11 Display properties(B)

ICON	ITEM & FUNCTION
Input Panel	<ul style="list-style-type: none"> • “Input panel” Tab : ✓ Change the soft keyboard options as desired, selecting from: <ul style="list-style-type: none"> ➢ Large or small keys ➢ Using gestures for space, black-space shift, and enter. ✓ To exit the soft keyboard Options, press “OK” on the control bar, or press the <Enter> key on the keypad. ✓ To exit the Input Panel, press “OK” on the control bar, or press the <Enter> key on the keypad.

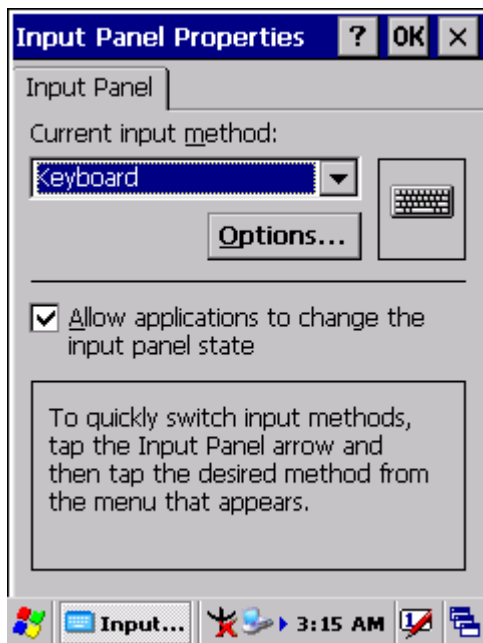


Figure 3-10-1

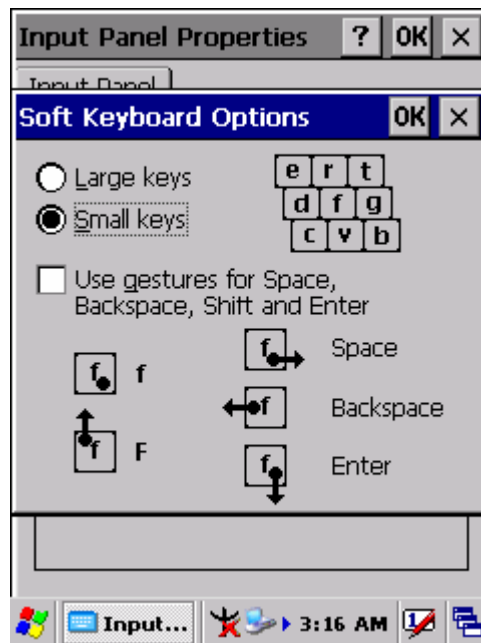


Figure 3-10-2

3.2.13 Internet Options

Table 3-12 Internet Options(A)

ICON	ITEM & FUNCTION
Internet Settings	<ul style="list-style-type: none"> • “General” Tab :(Figure 3-11-1) ✓ Type in the URL of desired start page and the desired search engine. You also change the Cache Size, clear the Cache and Clear the History..

Table 3-12 Internet Options(B)

ICON	ITEM & FUNCTION
Internet Settings	<ul style="list-style-type: none"> ● “Connection” Tab :(Figure 3-11-2)
	<ul style="list-style-type: none"> ✓ Modify the network access setting as desired.
	<ul style="list-style-type: none"> ● “Security” Tab (Figure 3-11-3)
	<ul style="list-style-type: none"> ✓ Modify the security settings as desired. You can enable any of the following by tapping the checkbox: <ul style="list-style-type: none"> ➤ Allow cookies ➤ Allow TLS 1.0 security ➤ Allow SSL 2.0 security ➤ Allow SSL 3.0 security ➤ Warn when switching across secure and insecure areas.
	<ul style="list-style-type: none"> ● “Advanced” Tab (Figure 3-11-4)
	<ul style="list-style-type: none"> ✓ Modify the security settings as desired. You can enable any of the following by tapping the checkbox: <ul style="list-style-type: none"> ➤ Display Image in pages ➤ Play sounds in pages ➤ Enable scripting ➤ Display a notification about every script error ➤ Underline links- <ul style="list-style-type: none"> Never Always Hover



Figure 3-11-1



Figure 3-11-2

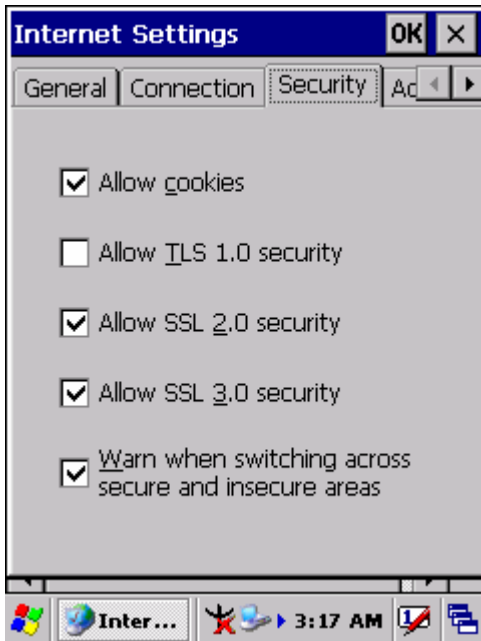


Figure 3-11-3

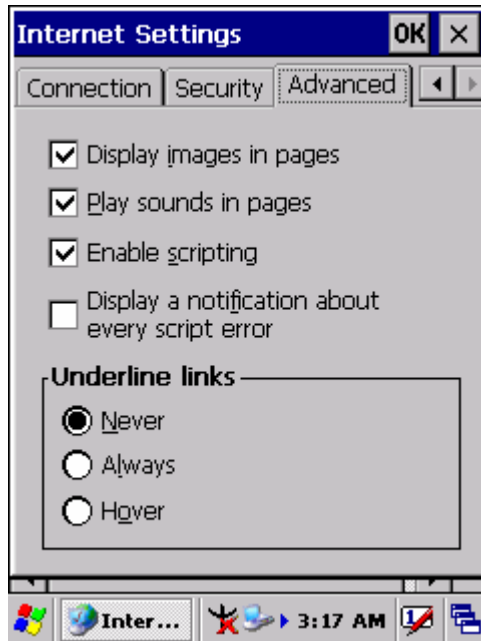


Figure 3-11-4

3.2.14 Keyboard

Table 3-13 Keyboard(A)

ICON	ITEM & FUNCTION
Keyboard	<ul style="list-style-type: none">• “Repeat” Tab : (Figure 3-12)✓ To change the amount of time between depressions before repetition starts, adjust the Repeat delay slider✓ To change the repeat rate, adjust the Repeat rate slider.✓ Test your new setting.✓ Tap “OK” to exit the “Keyboard” Tab.

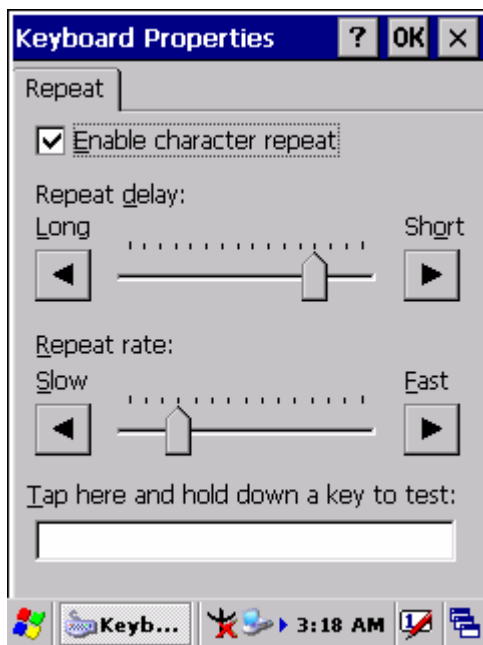


Figure 3-12

3.2.15 Mouse

Table 3-14 Mouse(A)

ICON	ITEM & FUNCTION
Mouse	<ul style="list-style-type: none"> • “Double-Click” Tab :(Figure 3-13-1,Figure 3-13-2) ✓ Double-click the checkerboard grid at comfortable speed ✓ Double-click the Test icon to test your setting. ✓ The function is OK if the figures are changed from Figure 3-13-1 to Figure 3-13-2. ✓ To tap “OK” to exit the Mouse tab.

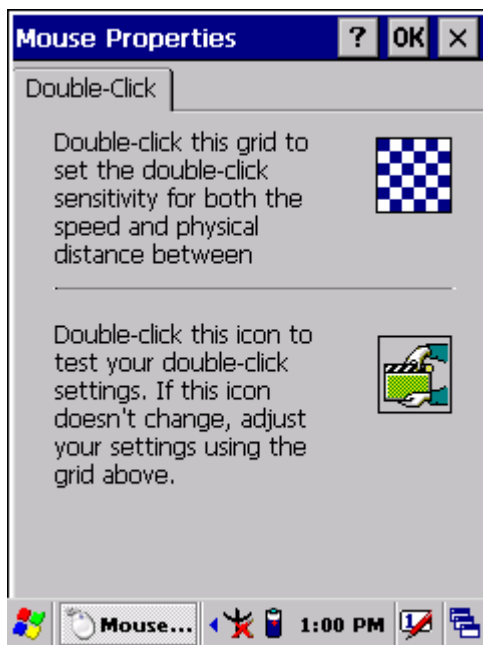


Figure 3-13-1

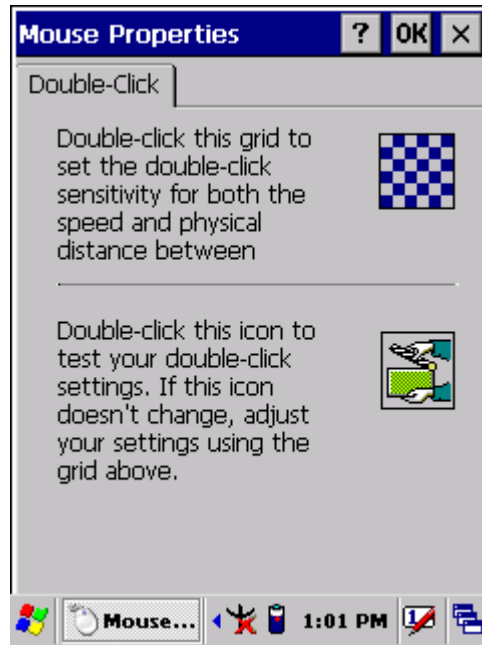


Figure 3-13-2

3.2.16 Network and Dial-up Connections

Table 3-15(A) Network and Dial-up Connections

ICON	ITEM & FUNCTION
Network and Dial-up Connections	<ul style="list-style-type: none"> ● “Connection” Tab :
	<ul style="list-style-type: none"> ✓ To create a “Dial-up Connection”: <ul style="list-style-type: none"> ➤ Double-tap the “Make New connection”. ➤ In the “Make New Connection” dialog box, enter a name for the connection. ➤ Select “Dial-Up Connection”. ➤ Select the “Next” button. ➤ Select the modem you want use. ➤ Select “Configure” ➤ Under “Connection Reference”, use the default settings provided. If you can’t connect using these settings, see your ISP or network administrator for specific information. If you want to always enter a phone number before connecting, Select “Manual Dial”. Select “OK”. ➤ Select “TCP/IP Settings”. In the “General” tab, ensure “Use Server-assigned IP address” is selected. In the “Name Servers” tab, ensure “Use Server-assigned addresses” is selected, and select “OK”. If you are unable to connect with these default settings, see your ISP or network administrator for specific TCP/IP information. ➤ Select the “Next” button and type the telephone number. ➤ Select the “Finish” button. <p>The connection you just created appears as an icon in the “Network and Dial-up Connections” folder.</p> ✓ Set up a point-to-Point Protocol (PPP) account with an ISP and obtain the following information: <ul style="list-style-type: none"> ➤ Access telephone number ➤ User name ➤ Password

Table 3-15(A) Network and Dial-up Connections

ICON	ITEM & FUNCTION
<p>Network and Dial-up Connections</p>	<p>Once you have established an account, create a new connection on your device. When creating this connection, you should be able to use all of the default TCP/IP settings provided in the Make New Connection Wizard. If you can't connect using the default settings, contact your ISP or access your ISP's Web site for specific TCP/IP information as well as primary and secondary DNS address.</p> <ul style="list-style-type: none"> ✓ Modify connection setting <ul style="list-style-type: none"> ➤ Select Start > Settings > Network and Dialup Connections ➤ Select the icon for connection settings you want to modify. ➤ Select File > Properties, or double- tap the appropriate icon. ➤ Select desired options. There may be additional settings that depend on the connection. To modify, select the icon and select the icon and select Advanced Settings... from the menu.

