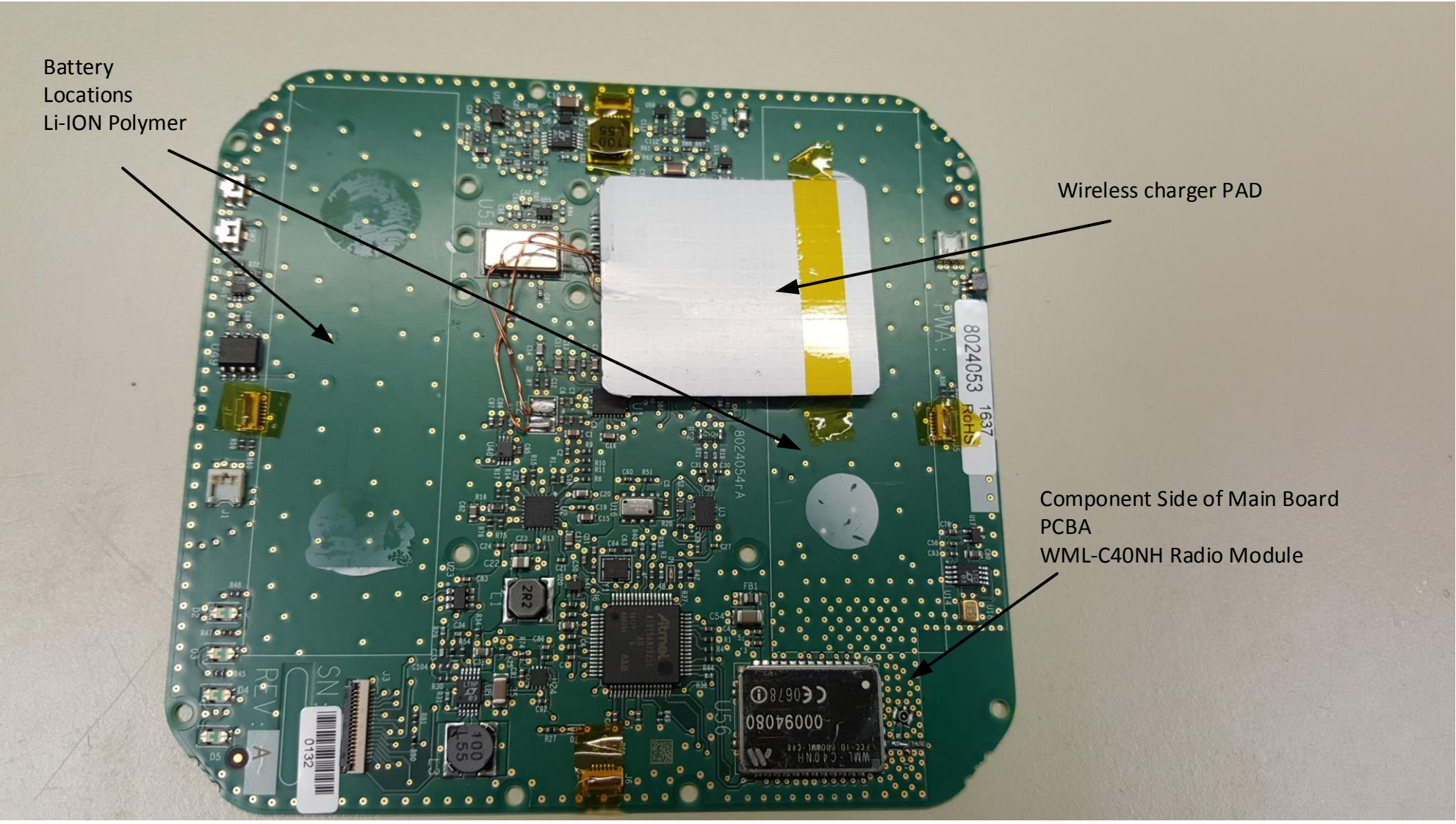
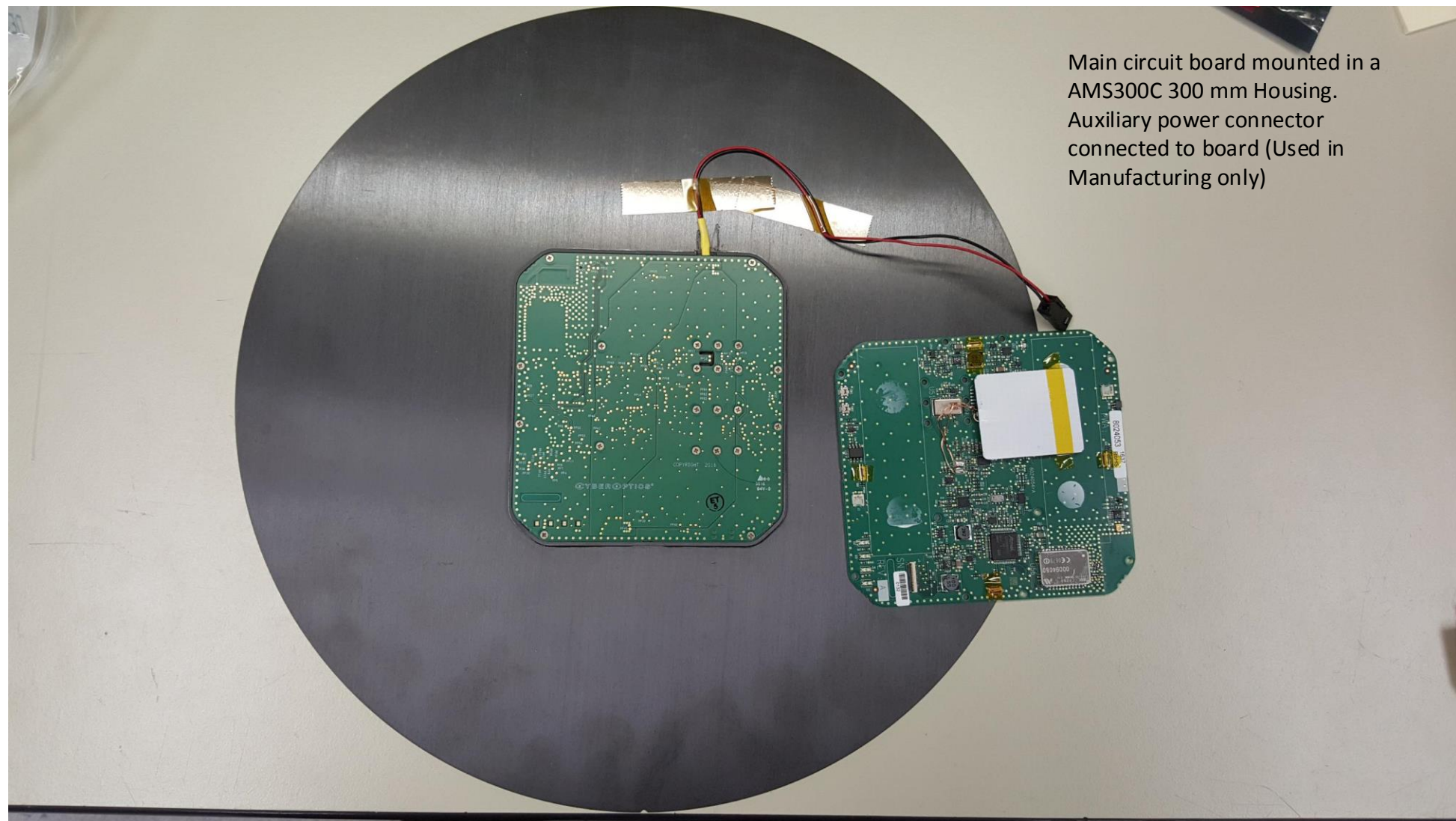


Non-Component  
Side of Main Board  
PCBA.  
Inverted F-Antenna



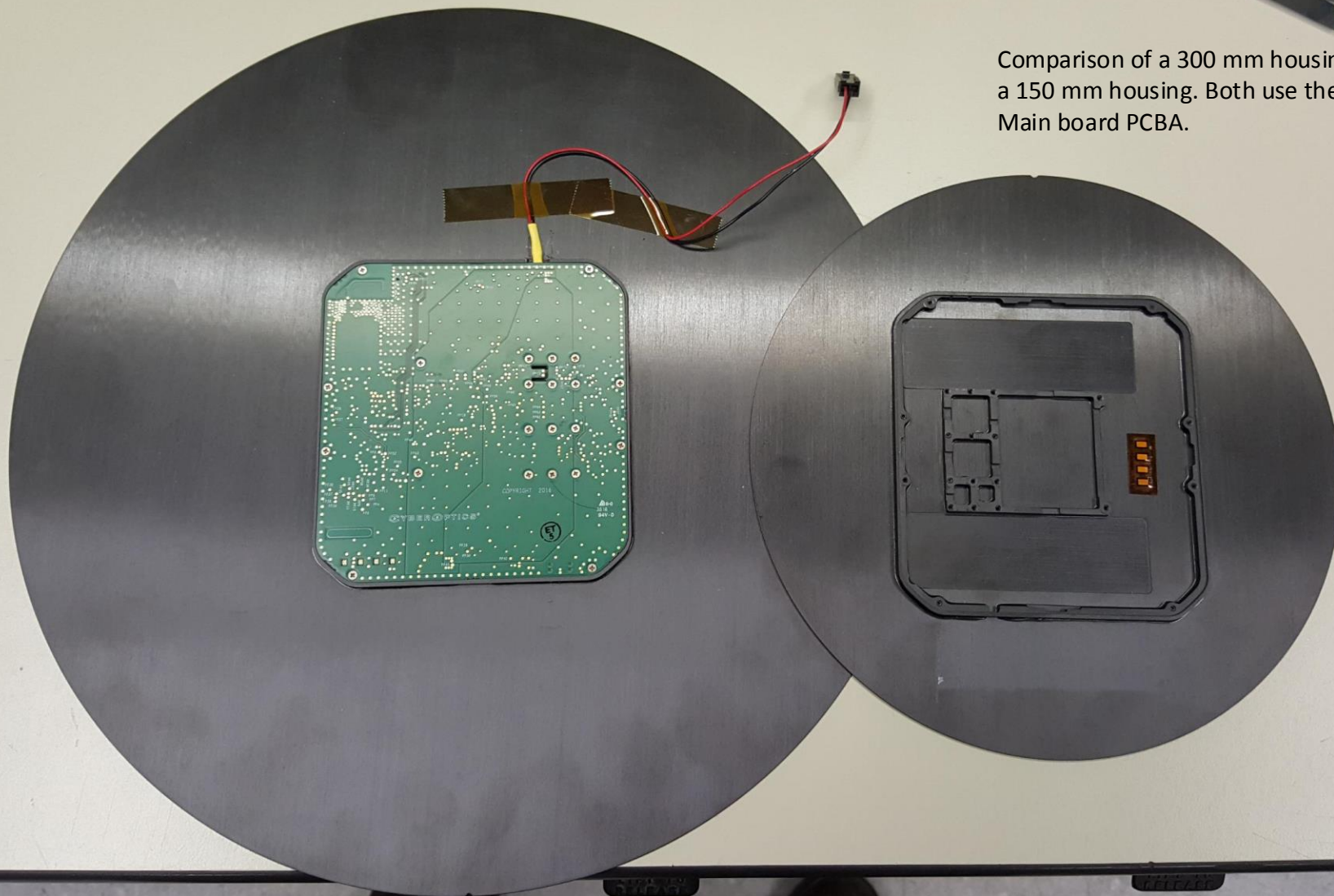


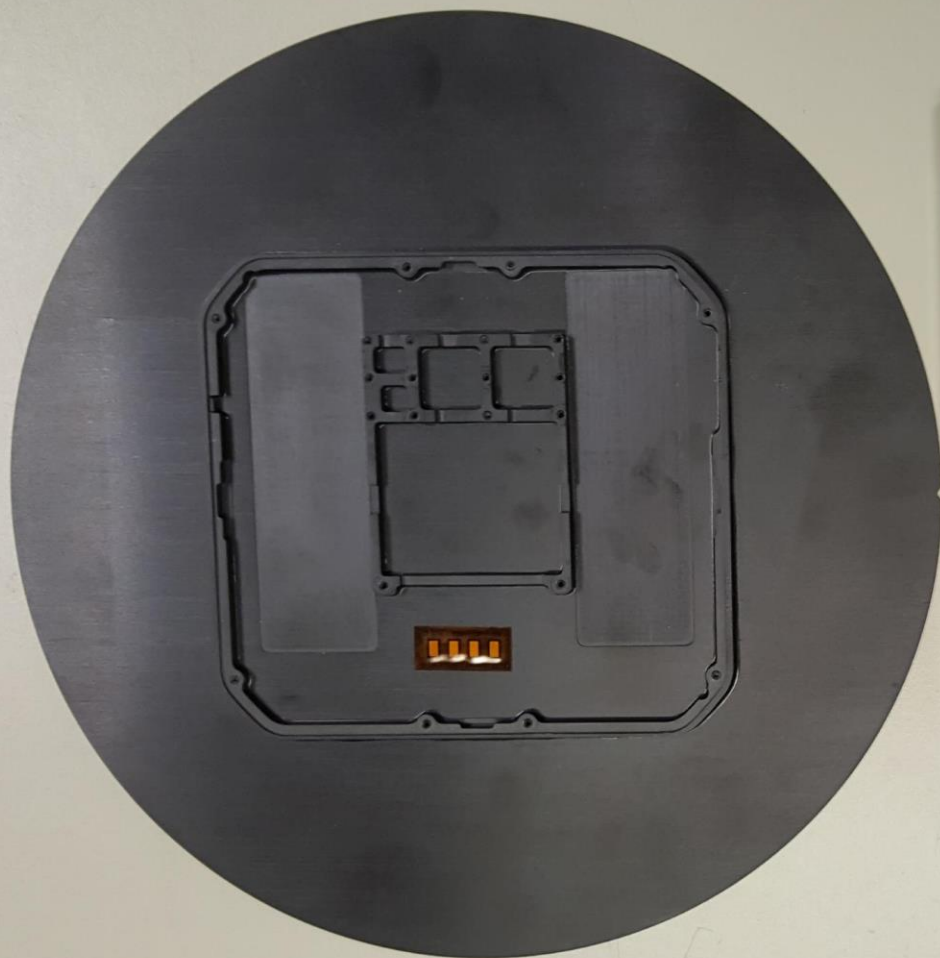


Main circuit board mounted in a  
AMS300C 300 mm Housing.  
Auxiliary power connector  
connected to board (Used in  
Manufacturing only)



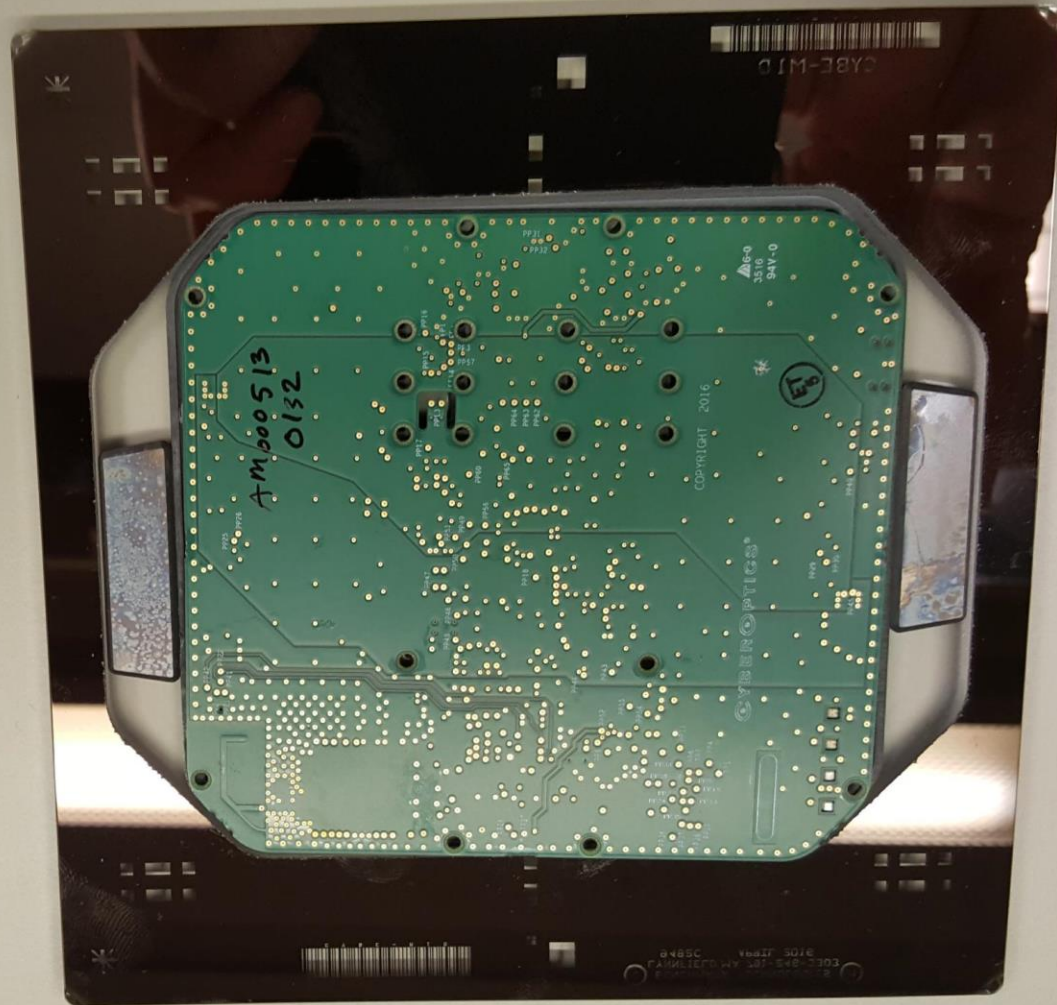
Comparison of a 300 mm housing and  
a 150 mm housing. Both use the same  
Main board PCBA.





Comparison of the AMS150C (150 mm) Housing, and the AMSR-6025Q Housing (on the right). Both use the same Main board PCBA.

Main board PCBA mounted in the housing of the AMSR-6025Q





**CYBEROPTICS®**  
**RETICLESENSE® AMSR**

Auto Multi Sensor for Leveling  
Vibration, and Humidity

[www.cyberoptics.com](http://www.cyberoptics.com)

[CSsupport@cyberoptics.com](mailto:CSsupport@cyberoptics.com)

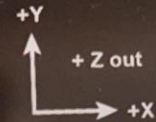
Made in USA



HT1



Contains FCC ID SPD003



STATIC SENSITIVE  
HANDLE CAREFULLY

CHARGER ON

CHARGING

UNIT ON

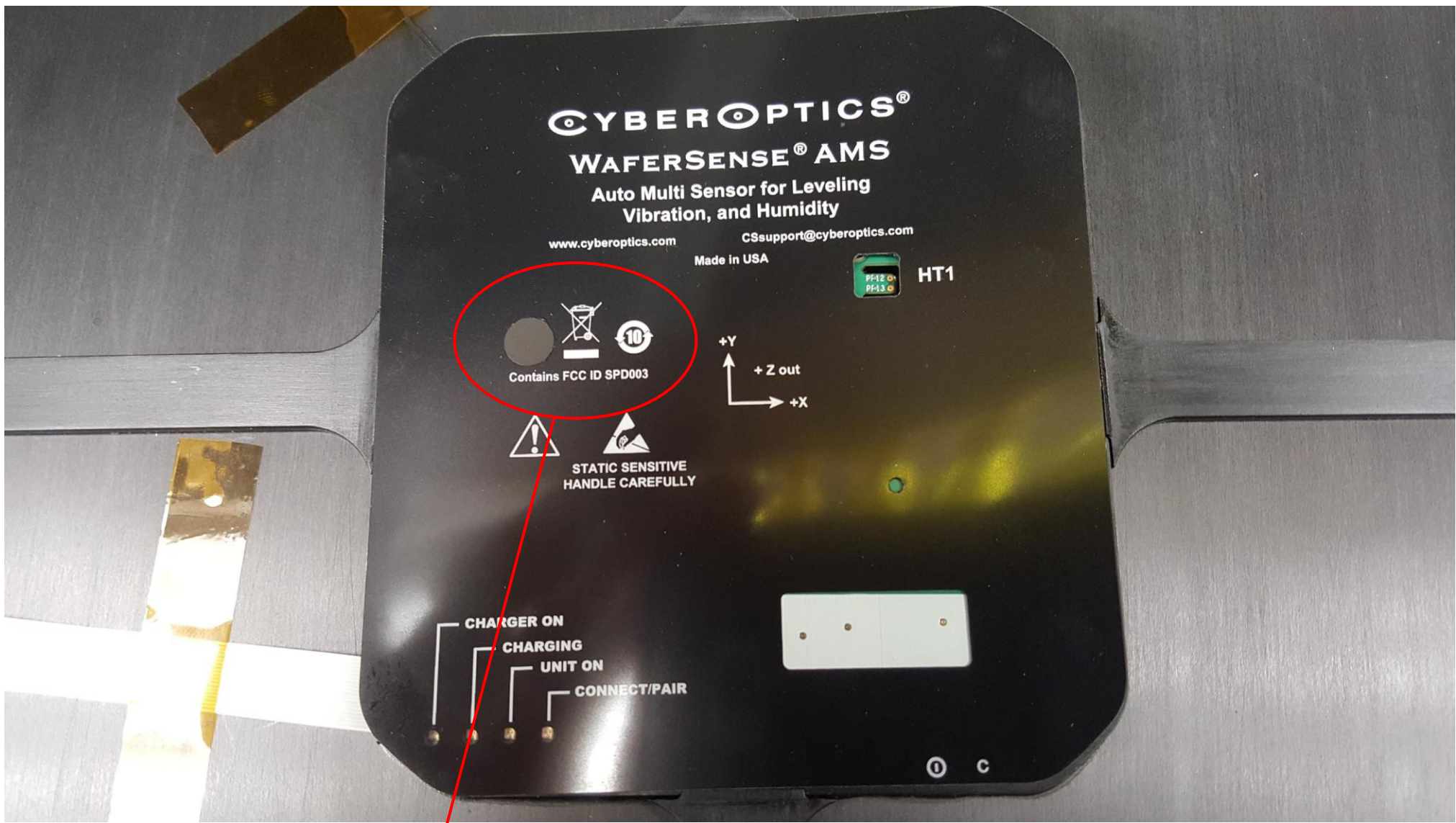
CONNECT/PAIR

AMSR-6025Q

S/N: AM000546

CYBE-WID

FCC Label on the AMSR-6025Q



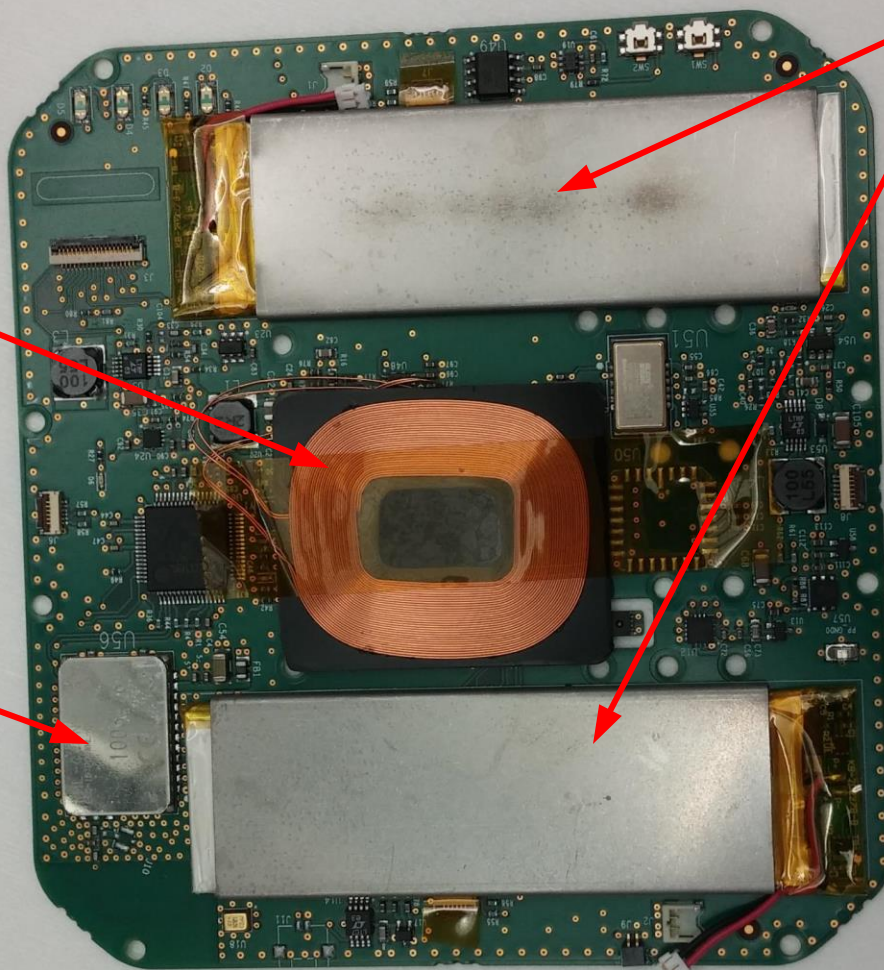
FCC Label used on AMS300C, AMS200C, and AMS150C



Wireless charger Coil

Component Side of Main Board  
PCBA  
WML-C40NH Radio Module

AMS PCBA with  
Li-ION Polymer  
Batteries installed





AMS-150C



AMS-200C



AMS-300C





AMSR-6025Q