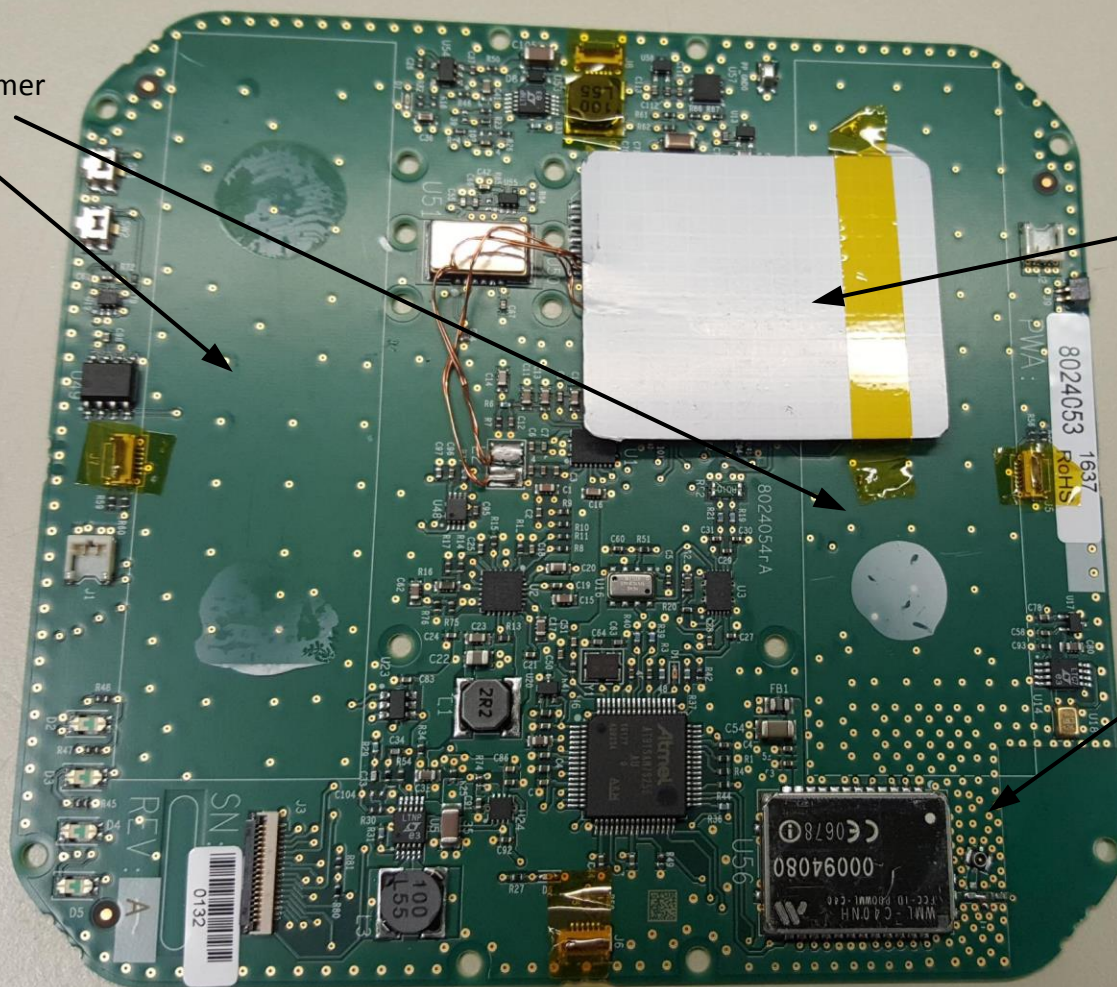


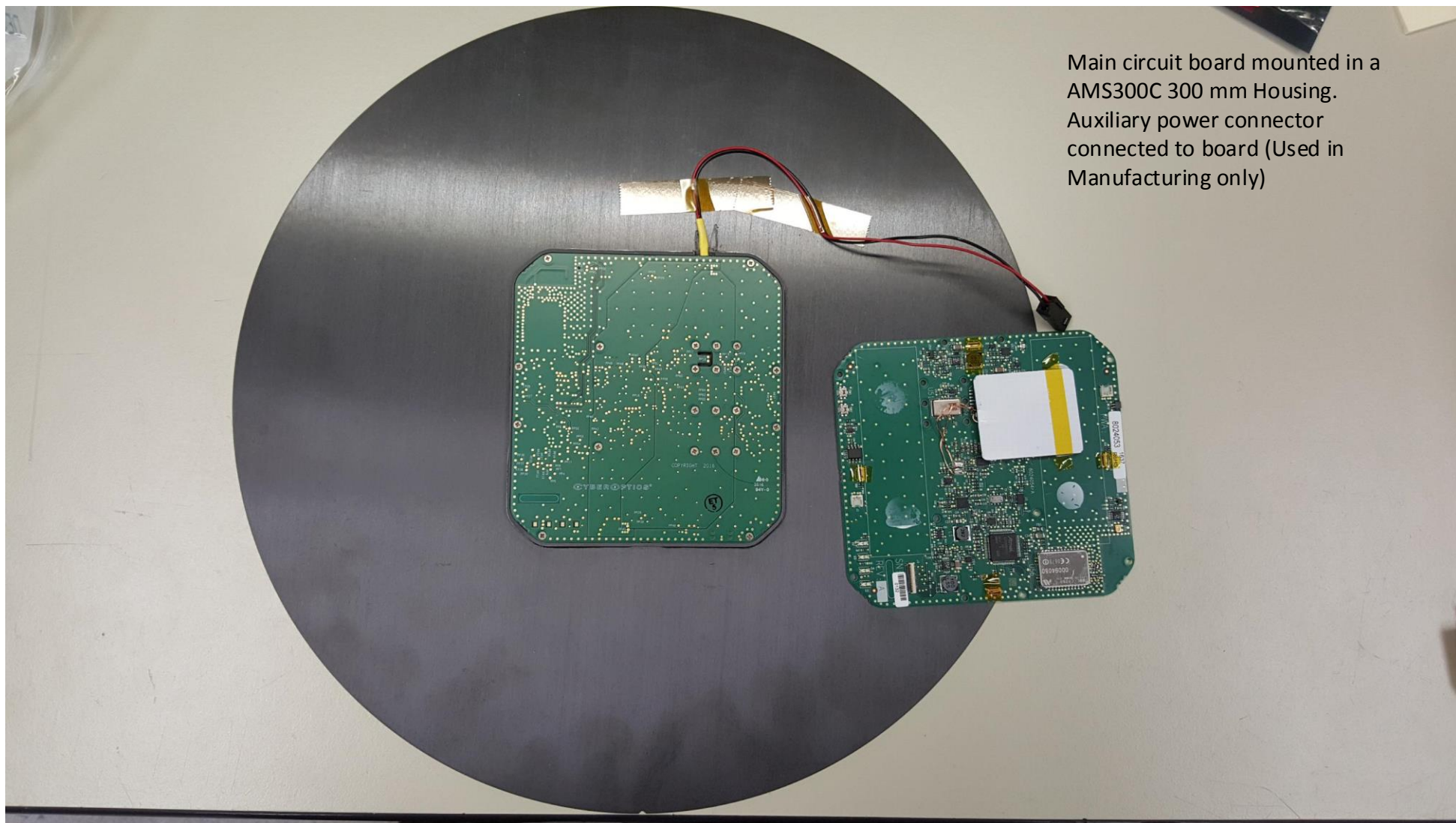
Non-Component
Side of Main Board
PCBA.
Inverted F-Antenna

Battery
Locations
Li-ION Polymer

Wireless charger PAD

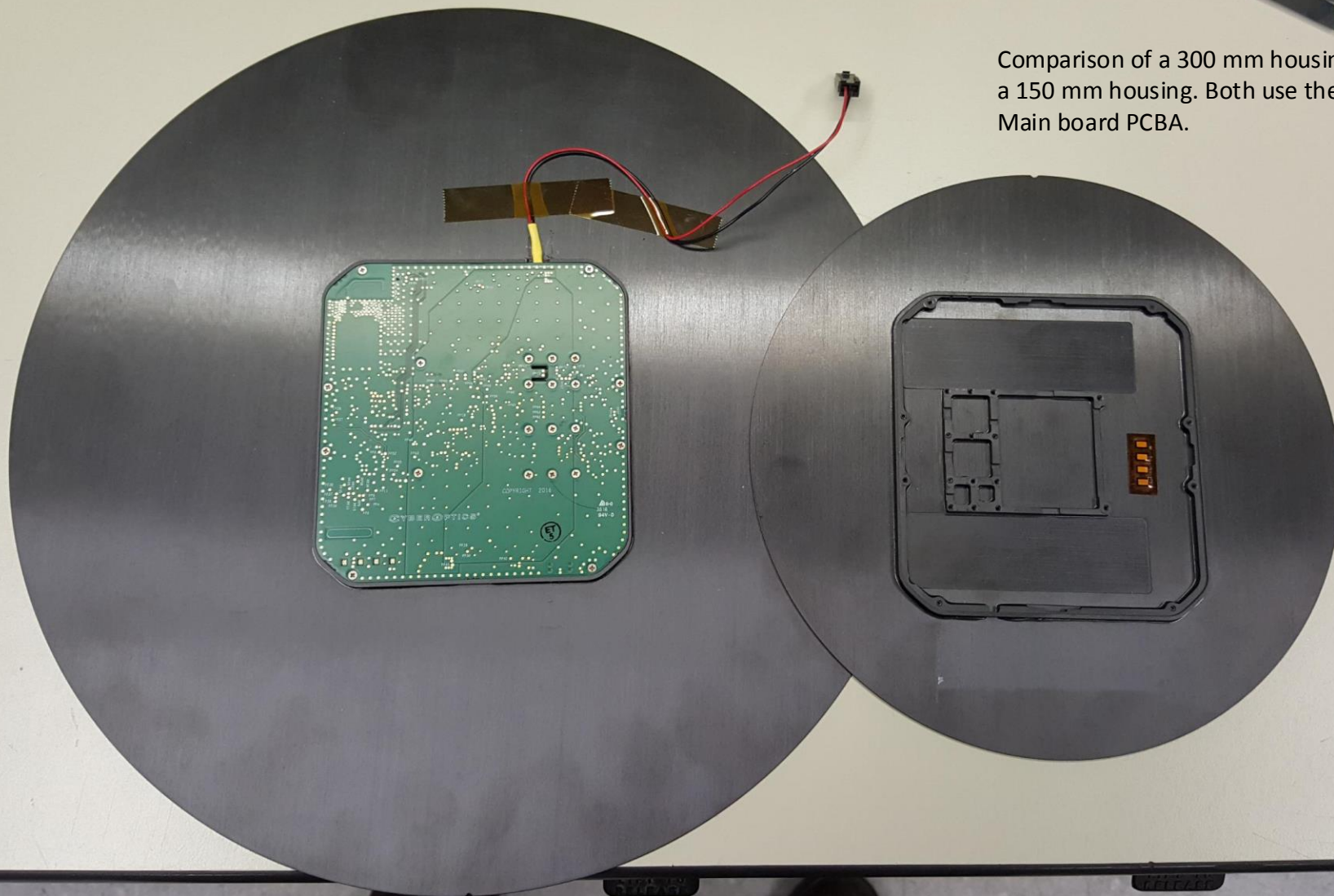
Component Side of Main Board
PCBA
WML-C40NH Radio Module

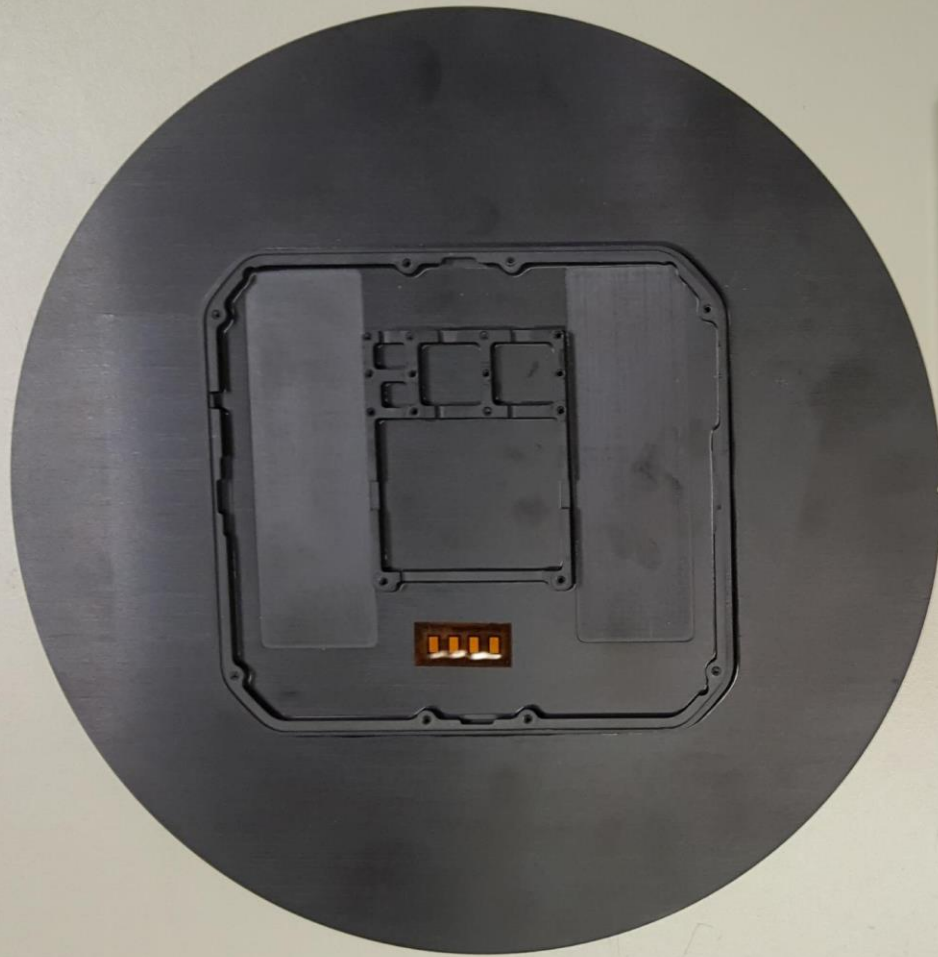




Main circuit board mounted in a
AMS300C 300 mm Housing.
Auxiliary power connector
connected to board (Used in
Manufacturing only)

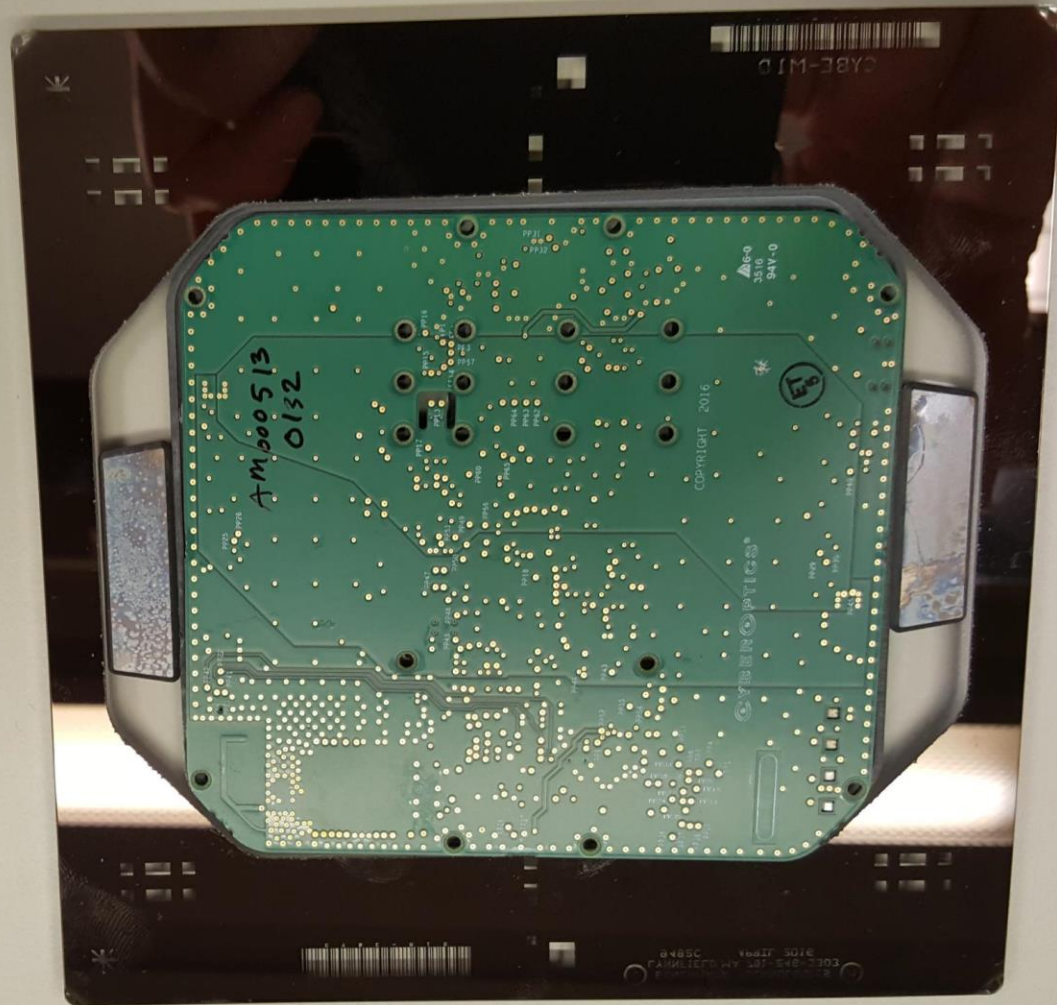
Comparison of a 300 mm housing and
a 150 mm housing. Both use the same
Main board PCBA.





Comparison of the AMS150C (150 mm) Housing, and the AMSR-6025Q Housing (on the right). Both use the same Main board PCBA.

Main board PCBA mounted in the housing of the AMSR-6025Q



CYBEROPTICS®
RETICLESENSE® AMSR
Auto Leveling and Vibration System

www.cyberoptics.com

CSsupport@cyberoptics.com

Made in USA

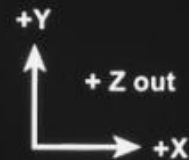
● HT



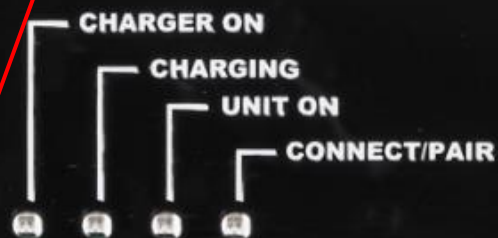
Contains FCC ID: SPD003



STATIC SENSITIVE
HANDLE CAREFULLY



● M



MODEL: AMSRQ

S/N: B007

FCC Label on the AMSR-6025Q

CYBEROPTICS®

WAFERSENSE® AMS

**Auto Leveling and Vibration System
With 5 Humidity Sensors**

www.cyberoptics.com

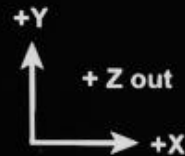
CSsupport@cyberoptics.com

Made in USA

○ HT1



Contains FCC ID: SPD003



● M


**STATIC SENSITIVE
HANDLE CAREFULLY**

CHARGER ON
CHARGING
UNIT ON
CONNECT/PAIR

MODEL: AMS

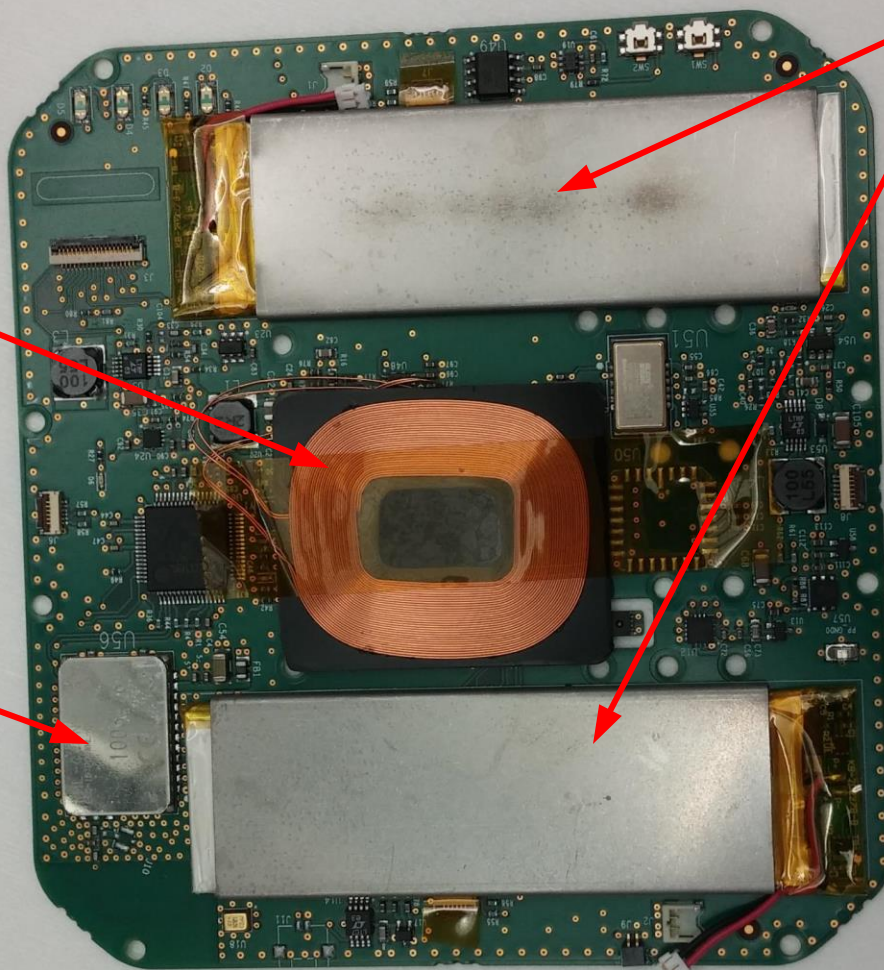
S/N: B003

FCC Label used on AMS300C, AMS200C, and
AMS150C

Wireless charger Coil

Component Side of Main Board
PCBA
WML-C40NH Radio Module

AMS PCBA with
Li-ION Polymer
Batteries installed





AMS-150C



AMS-200C



AMS-300C



CABE-MIC

CYBEROPTICS®

RETICLESENSE® AMSR

Auto Leveling and Vibration System

www.cyberoptics.com

CSsupport@cyberoptics.com

Made in USA

HT



Contains FCC ID: SPD003



STATIC SENSITIVE
HANDLE CAREFULLY



L

A

M



MODEL: AMSRQ

S/N: B007

① C

231001011237 2844441961
ГЛАВНОГО УЧАСТКА
35088 894 5012 2105 2105
© 2012



Bluetooth Radio Module
Model : WML-C40NH
CyberOptics FCC ID: SPD003

CyberOptics
M/N WML-C40NH
FCC ID: SPD003

S/N 00094080



U56



U14
C93
C58

FB1
C54
R1
R4
R3
C4

R37
R42
D1
R39
R3
R49
R36
R44
R4
R1
C4
C54
FB1
C27
R37
R42
D1
R39
R3
R49
R36
R44
R4
R1
C4
C54
FB1
C27

8024054rA