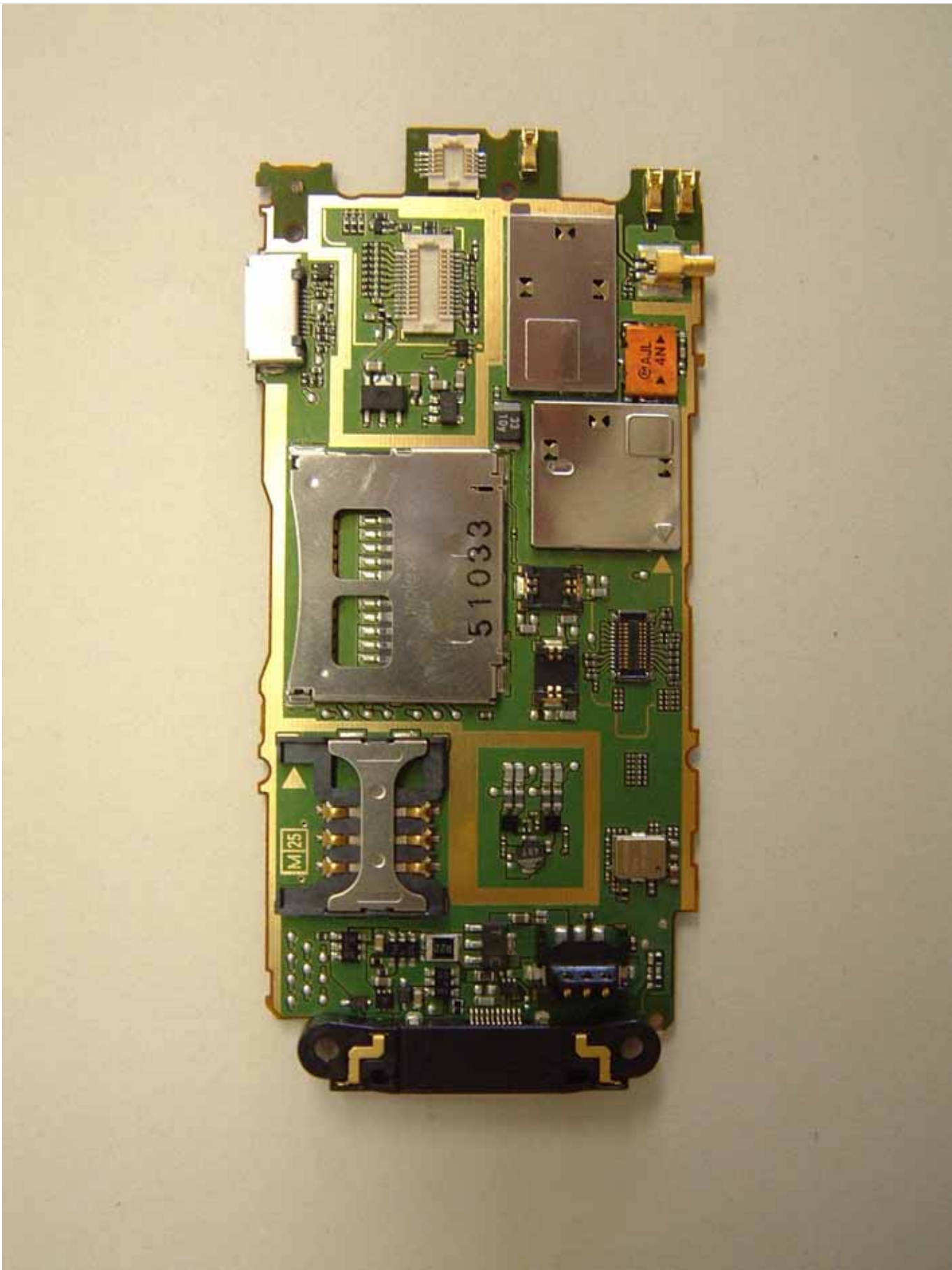


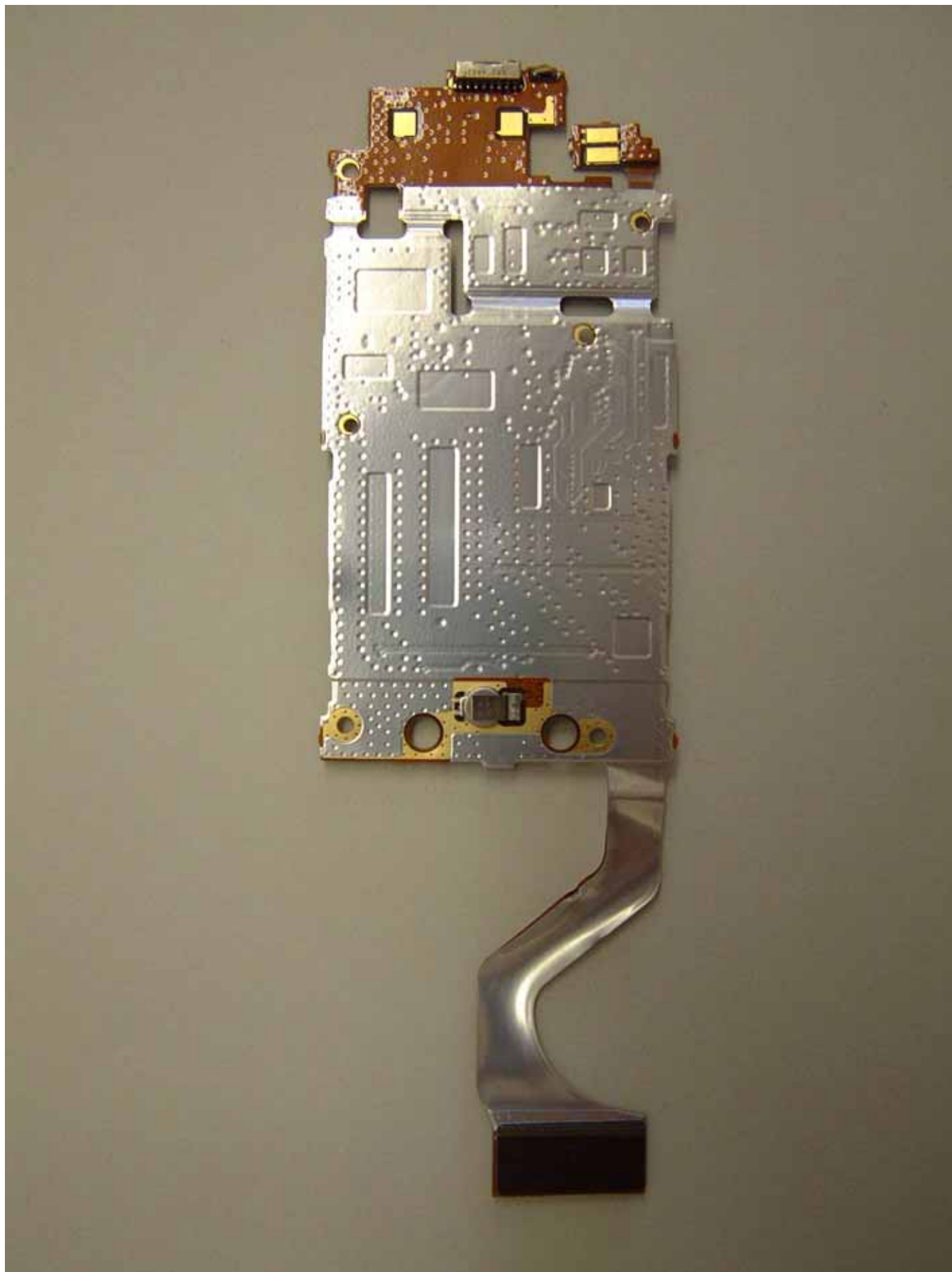
Lower PCB (A)



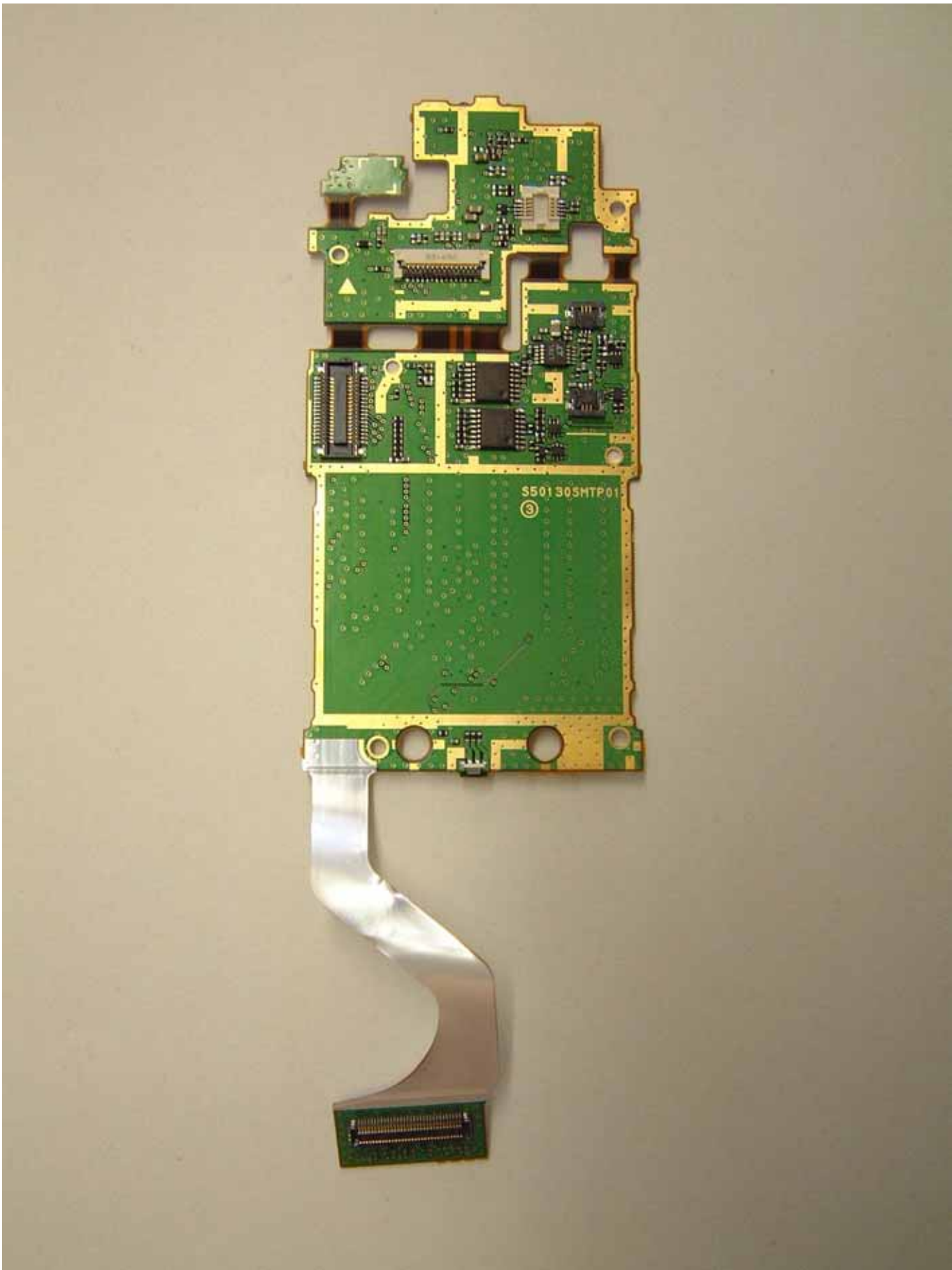
Lower PCB (B)



Upper PCB (A)



Upper PCB (B)





Internal Photographs



Equipment within Upper PCB

Equipment within Upper PCB





Upper PCB within Main LCD

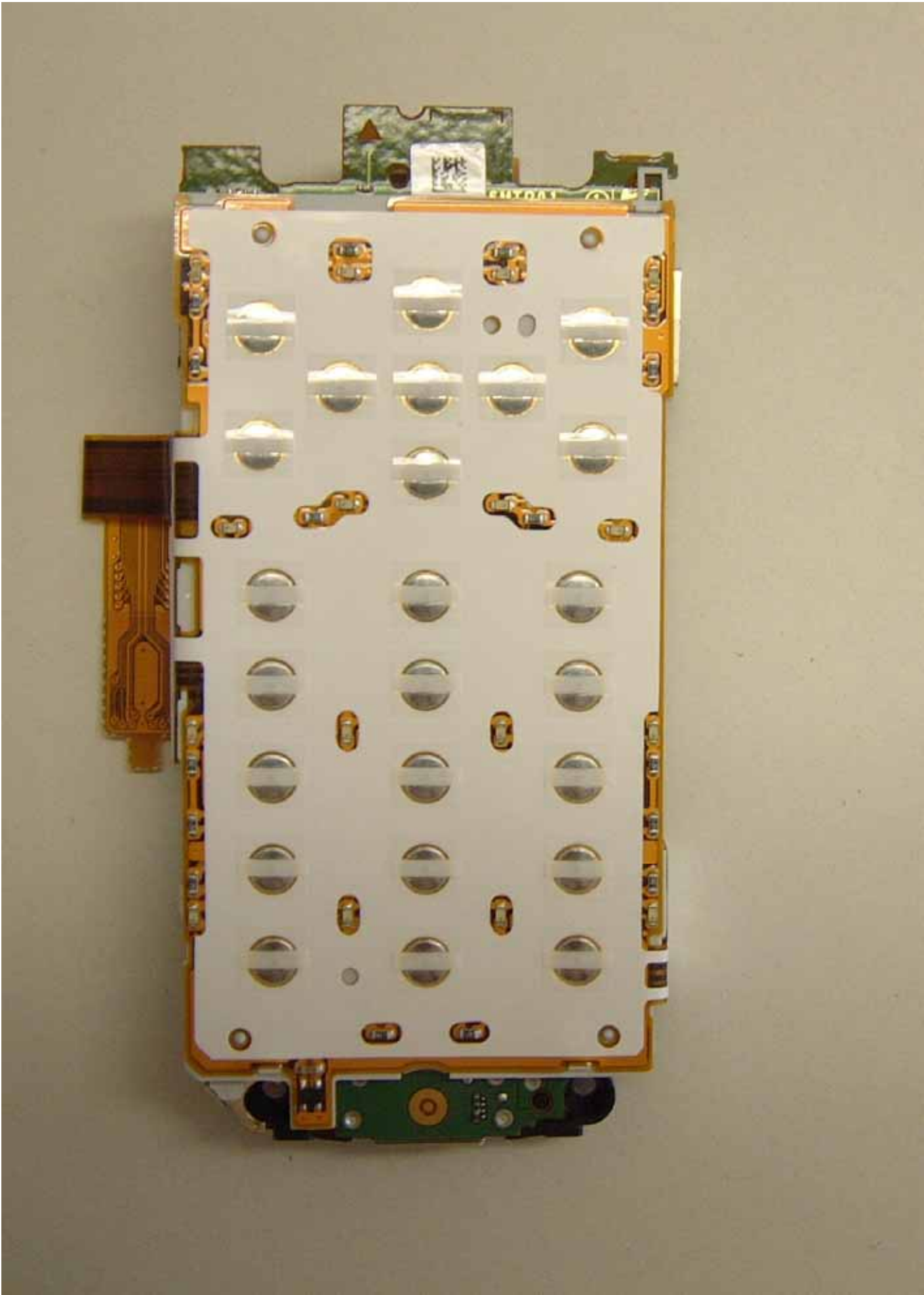


Upper PCB within Sub LCD and Shield Case





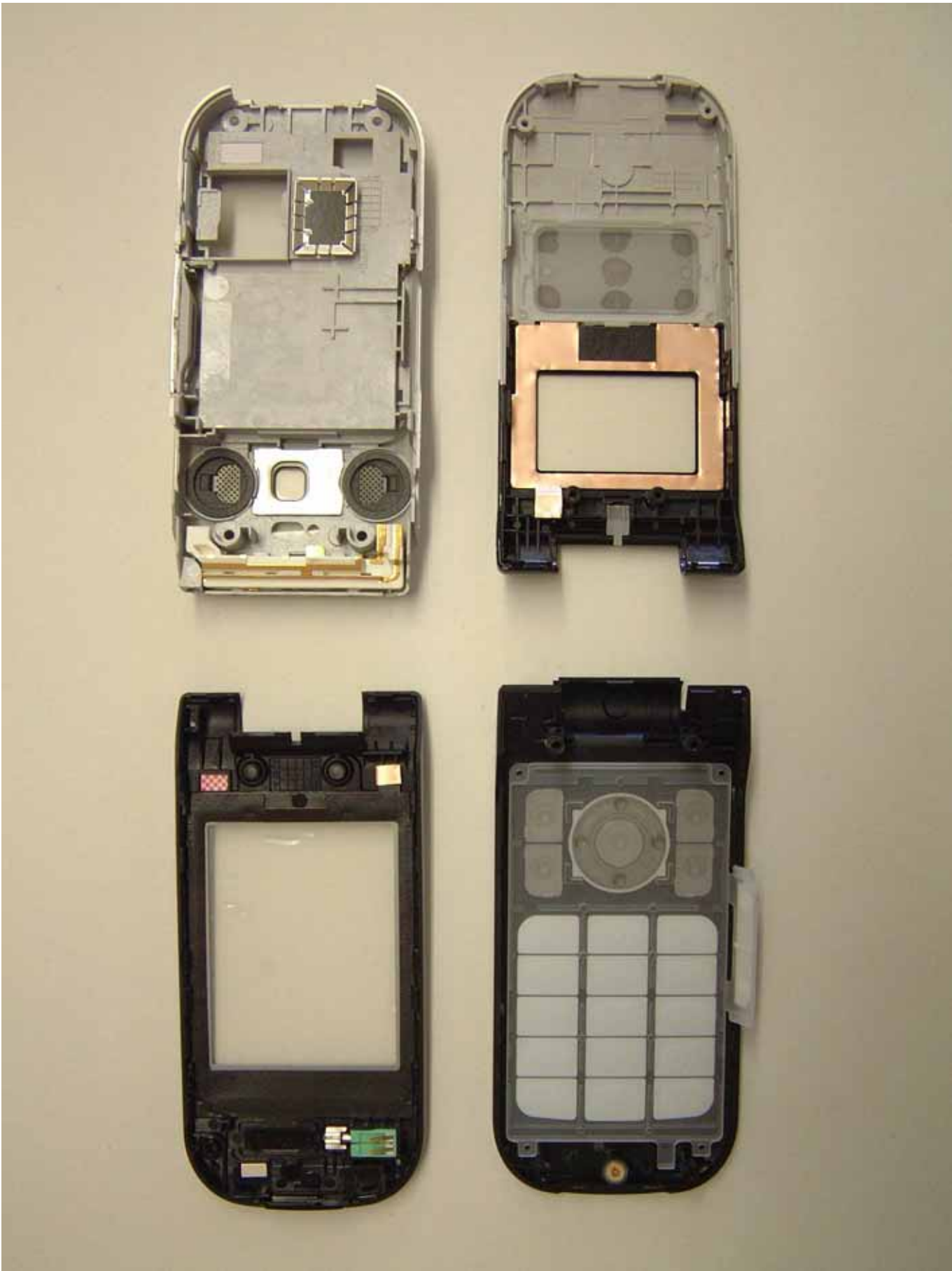
Lower PCB within Shield Case



Lower PCB within key Assembly article



Upper Case and Key Pad (Front view)



Upper Case and Lower Case (Inside View)