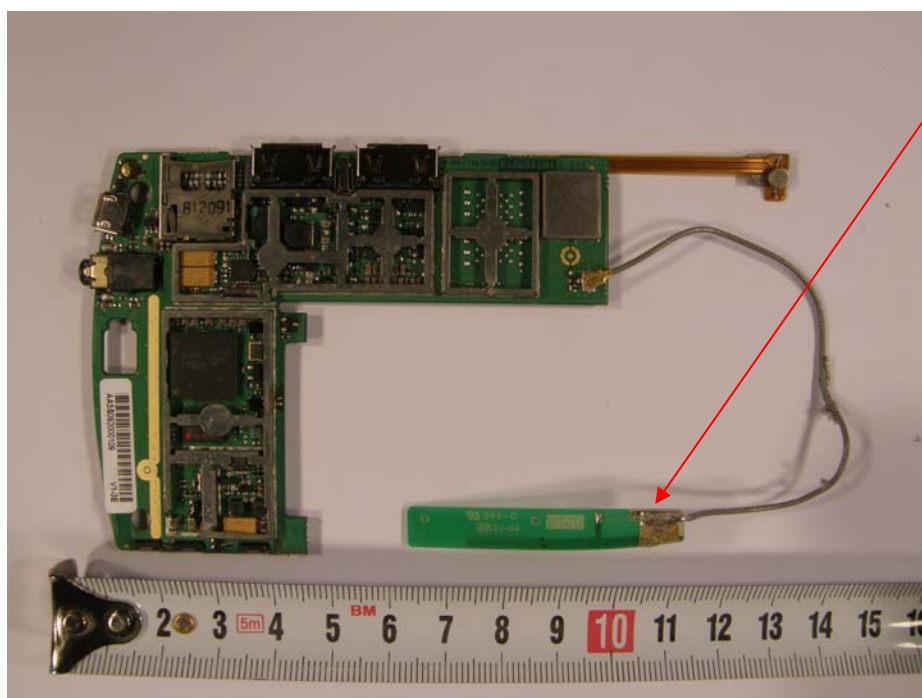


## **Antenna description**

## Bluetooth / WiFi



*The antenna used for WiFi and Bluetooth on Archos model 7501 is a "F" antenna, directly printed on the PCB. The gain of the antenna is -3.1 dBi.*



## FM Band II transmitter



*The FM band II transmitter  
uses the power supply cord  
for antenna*



## FM receiver



*The FM receiver uses the power head set cord for antenna*

