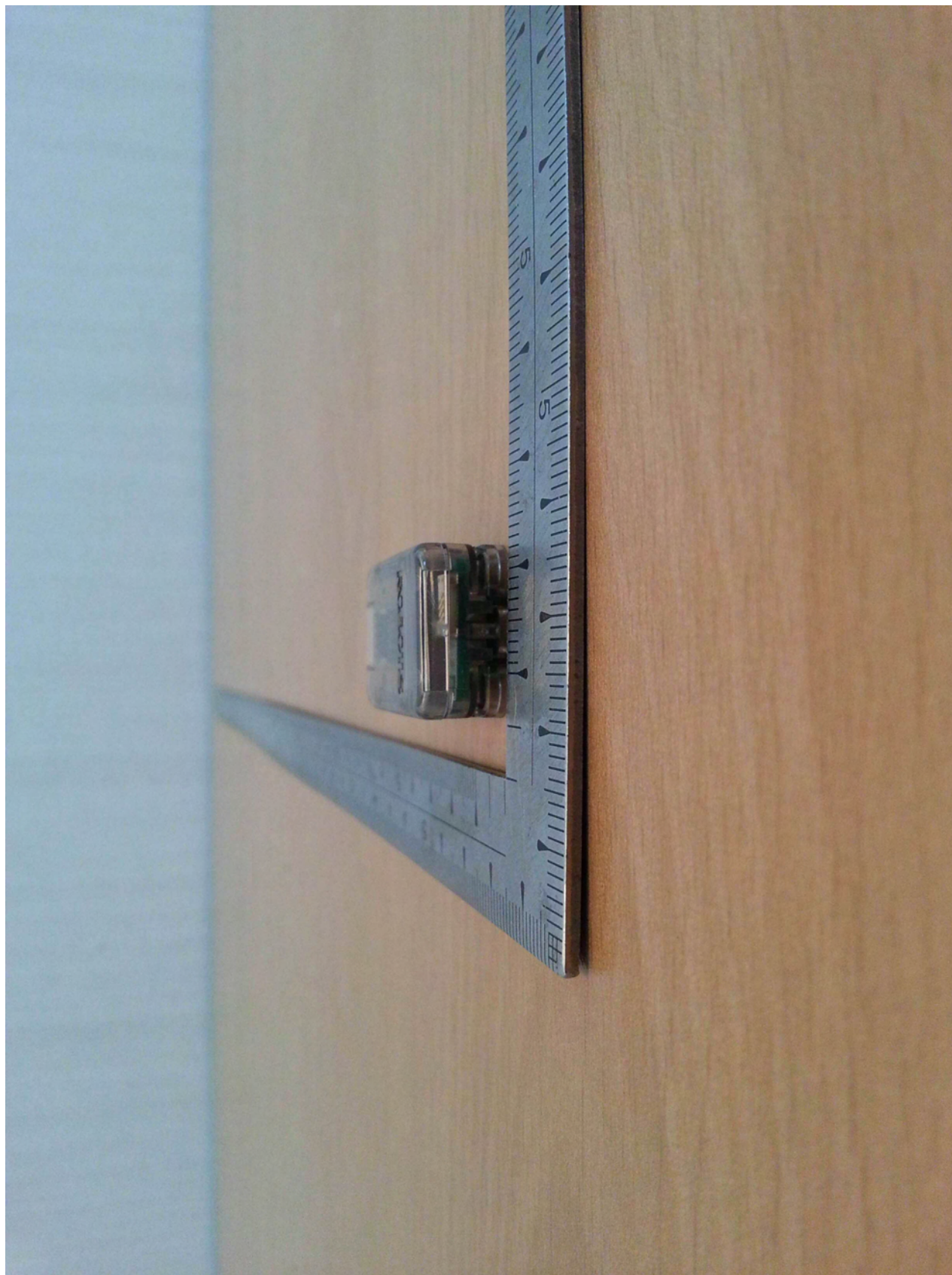


HEAD OFFICE : #505 SK APT. Factory 223-28, Sangdaewon 1 Dong, Jungwon-Gu, Seongnam-City, Gyunggi-Do, 462-121, Korea
(TEL: +82-31-746-8500 FAX: +82-31-746-8700)

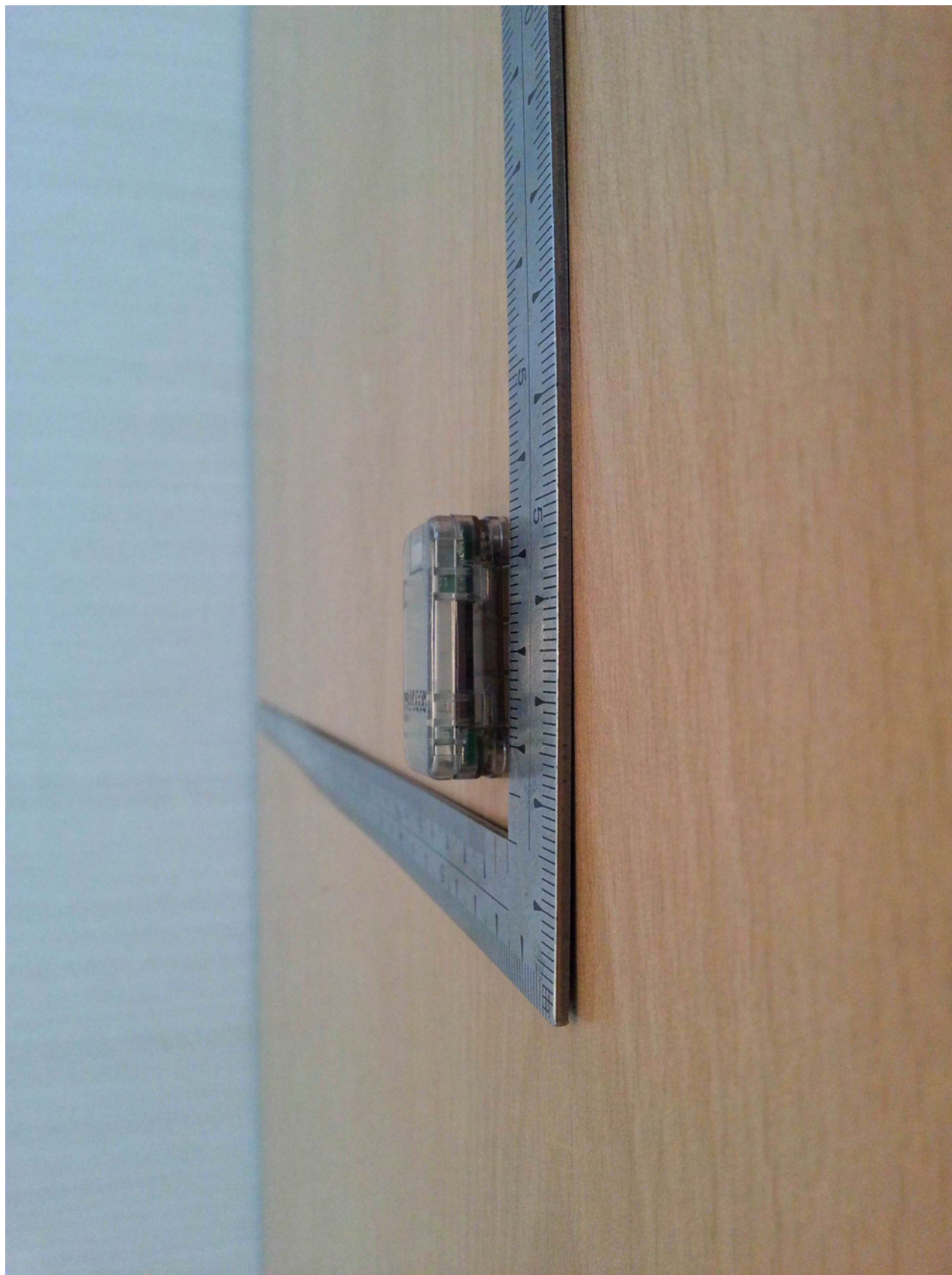
EMC Testing Div : 307-51 Daessangyeong-ri, Chowol-eup, Gwangju-si, Gyeonggi-do 464-862 Korea (TEL: 82-31-765-8289, FAX: 82-31-766-2904)

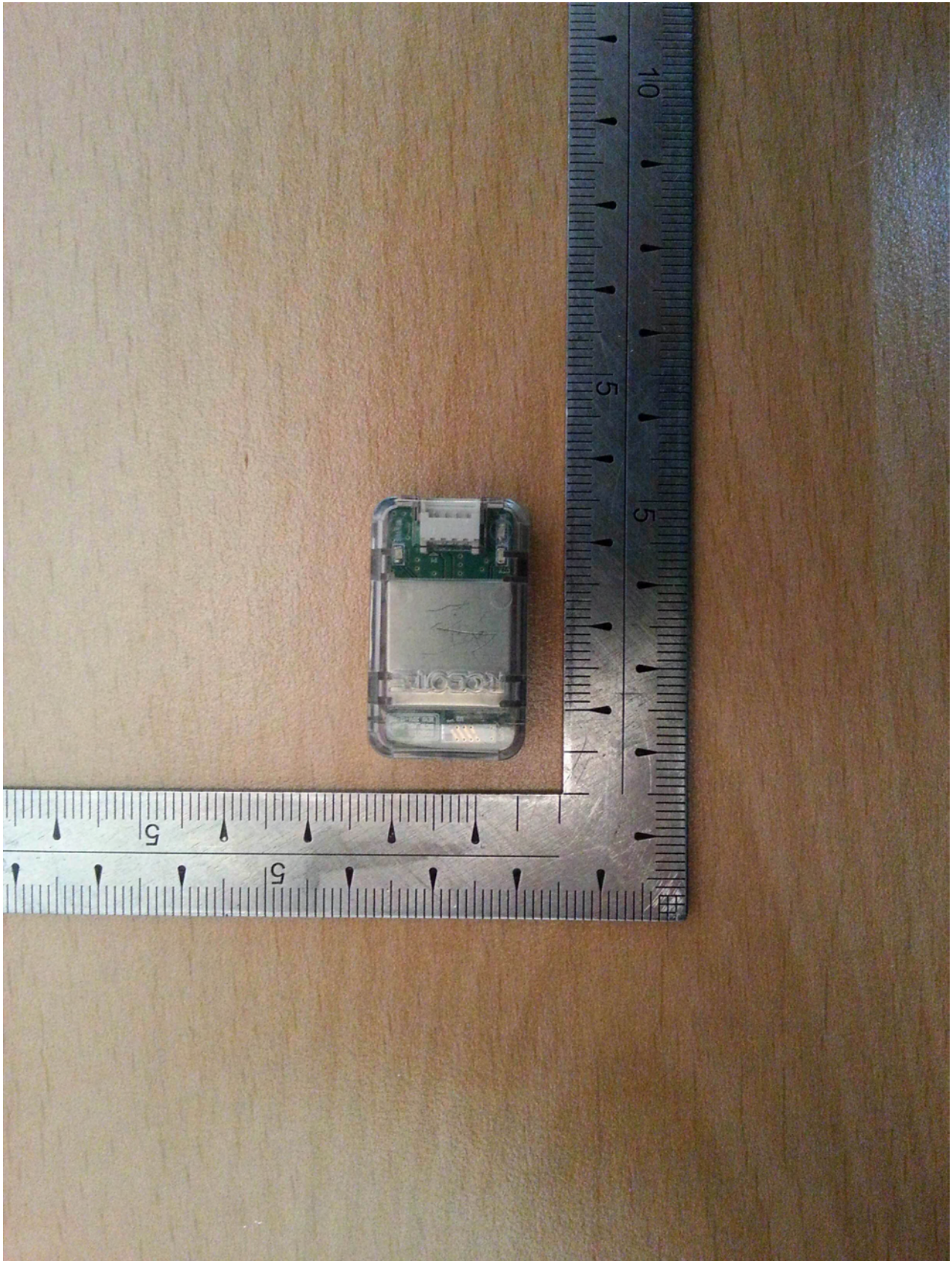


HEAD OFFICE : #505 SK APT. Factory 223-28, Sangdaewon 1 Dong, Jungwon-Gu, Seongnam-City, Gyunggi-Do, 462-121, Korea
(TEL: +82-31-746-8500 FAX: +82-31-746-8700)

EMC Testing Div : 307-51 Daessangnyeong-ri, Chowol-eup, Gwangju-si, Gyeonggi-do 464-862 Korea (TEL: 82-31-765-8289, FAX: 82-31-766-2904)

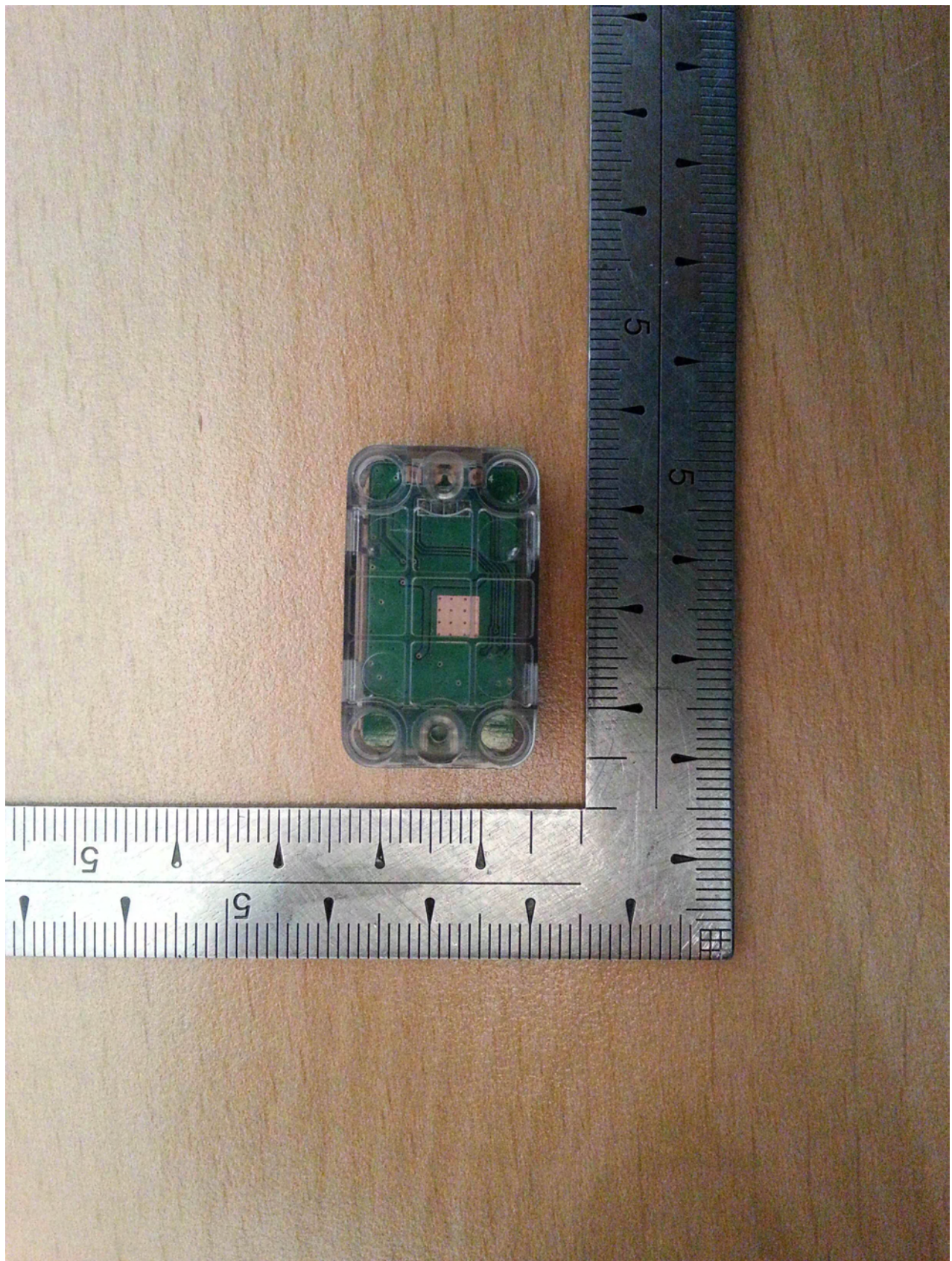






HEAD OFFICE : #505 SK APT. Factory 223-28, Sangdaewon 1 Dong, Jungwon-Gu, Seongnam-City, Gyunggi-Do, 462-121, Korea
(TEL: +82-31-746-8500 FAX: +82-31-746-8700)

EMC Testing Div : 307-51 Daessangnyeong-ri, Chowol-eup, Gwangju-si, Gyeonggi-do 464-862 Korea (TEL: 82-31-765-8289, FAX: 82-31-766-2904)



HEAD OFFICE : #505 SK APT. Factory 223-28, Sangdaewon 1 Dong, Jungwon-Gu, Seongnam-City, Gyunggi-Do, 462-121, Korea
(TEL: +82-31-746-8500 FAX: +82-31-746-8700)

EMC Testing Div : 307-51 Daessangnyeong-ri, Chowol-eup, Gwangju-si, Gyeonggi-do 464-862 Korea (TEL: 82-31-765-8289, FAX: 82-31-766-2904)