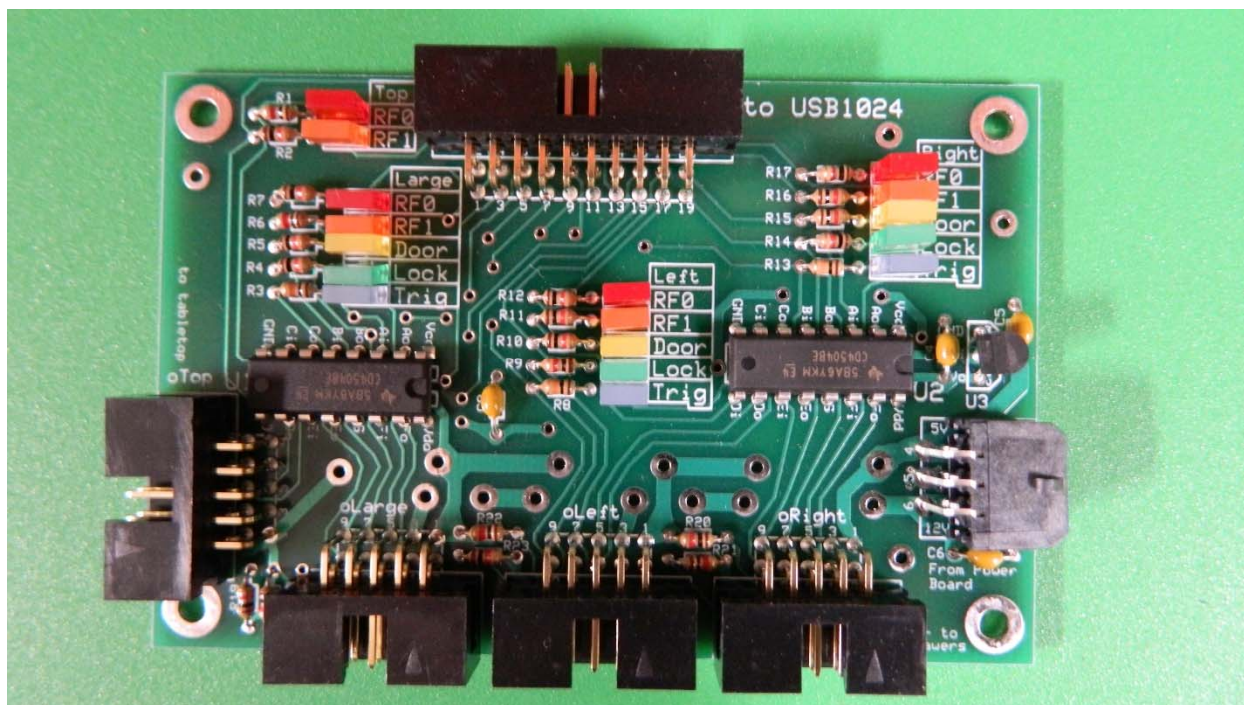
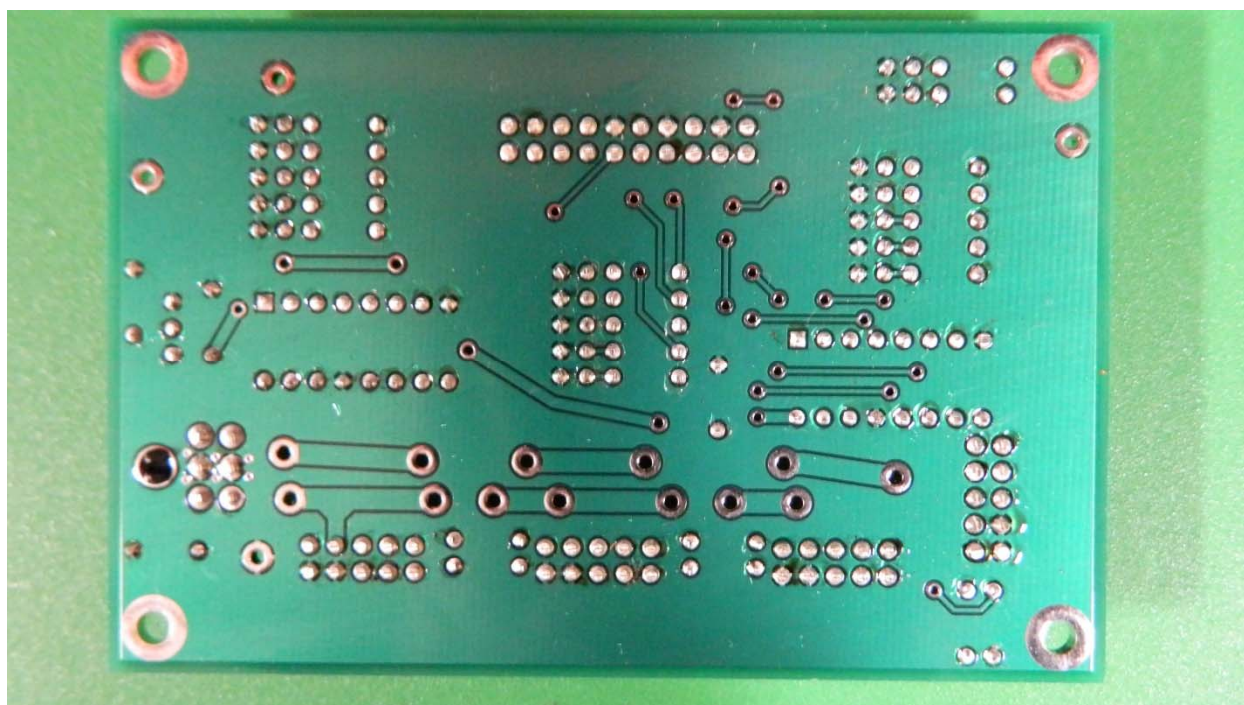


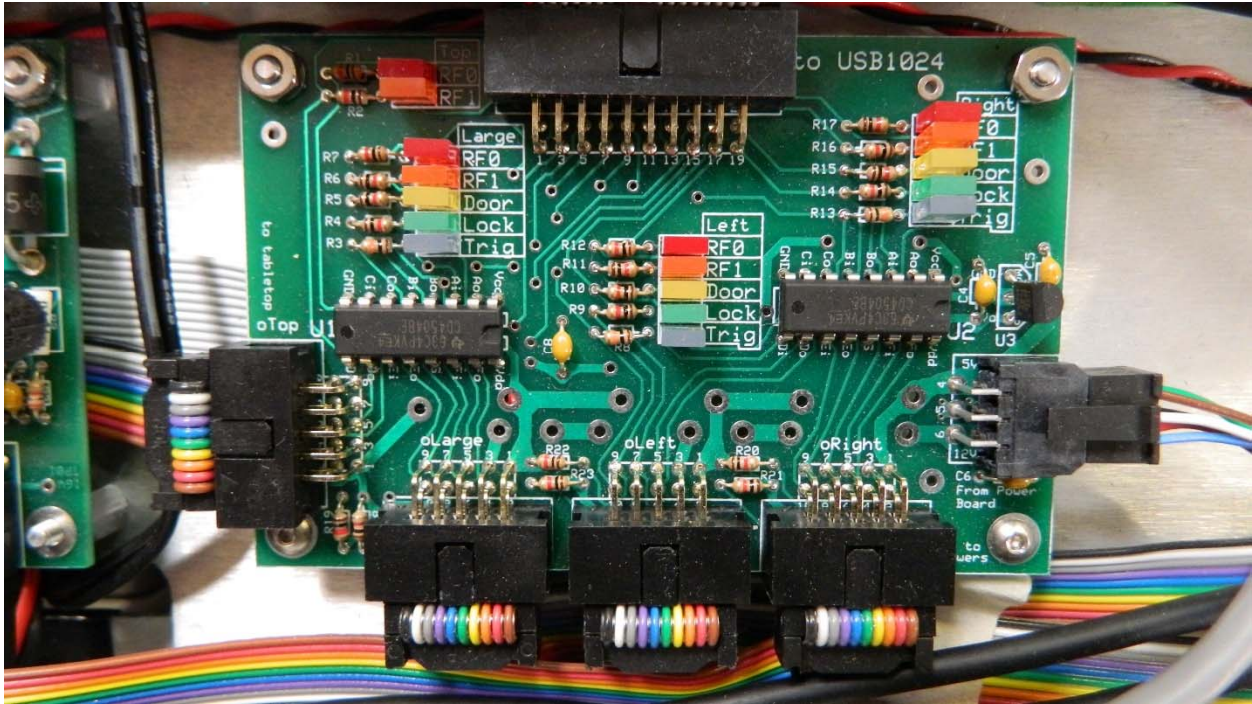
RF/Digital Circuits Photos



MEPS Logic/Controller PCBA (top-side)



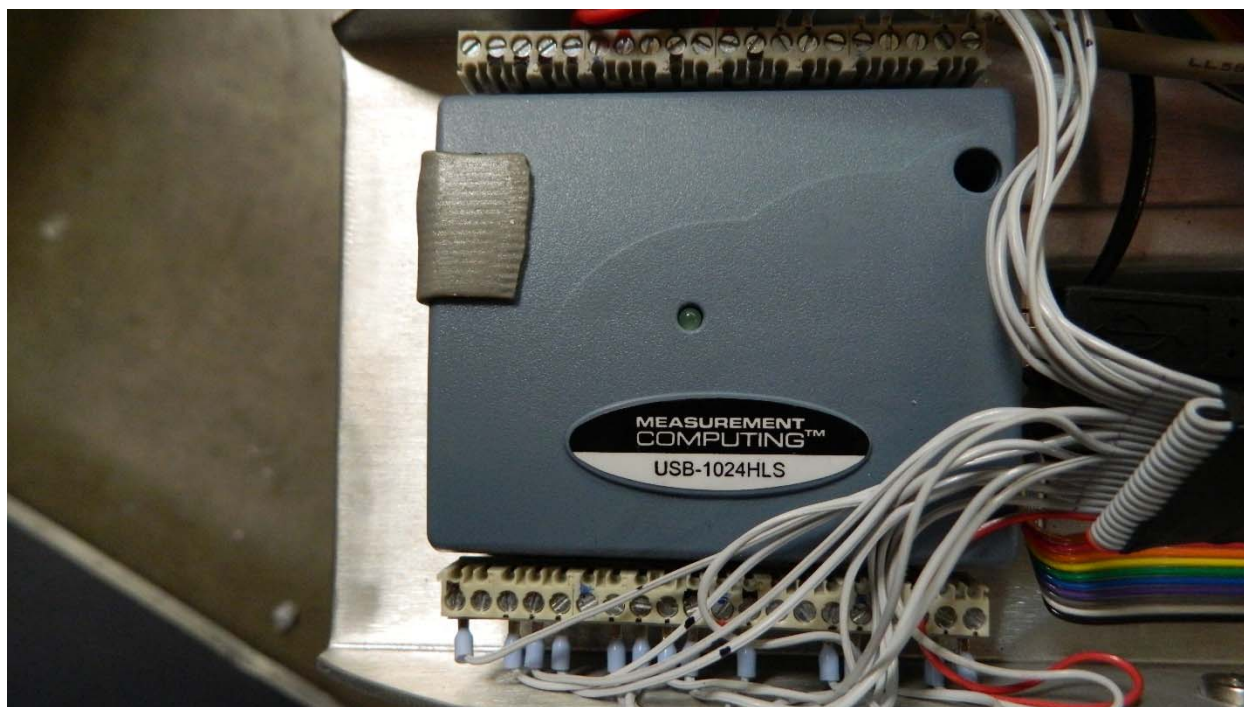
MEPS Logic/Controller PCBA (bottom-side)



MEPS Logic/Controller PCBA (installed; ref. "LVIS Schematic Diagram" for cable routing)

Per the LVIS Schematic Diagram, the above board is controlled by the Measurement Computing model USB-1024 digital I/O device (ribbon cable attachment shown at top of photo above).

The four ribbon cables, marked "Top", "Large", "Left", and, "Right", run to the MEPS Top Antenna Controller PCBA as well to each of the drawer antennas (MANNS) supplying power as well as the signal needed to switch each RF circuit to 50 Ohm load.



Included for reference only is a photo of the installed commercially sourced digital I/O device