

SX1276  
1412  
W2R240.  
00

6KC12  
N0323  
PJY5

E48  
918B

C137 R.132  
Y2

L21  
L22

R19  
R14  
R33  
R17

C27  
C2  
C13  
C33

R15  
R11  
C53

C107  
C52  
P4

C105  
R69  
R60

R13  
R15  
R11

C27  
C2  
C13

C107  
C52  
P4

C105  
R69  
R60

R13  
R15  
R11

C27  
C2  
C13

C107  
C52  
P4

C105  
R69  
R60

R13  
R15  
R11

C27  
C2  
C13

C107  
C52  
P4

C105  
R69  
R60

R13  
R15  
R11

C27  
C2  
C13

C107  
C52  
P4

C105  
R69  
R60

R13  
R15  
R11

C27  
C2  
C13

C107  
C52  
P4

C105  
R69  
R60

R13  
R15  
R11

C27  
C2  
C13

C107  
C52  
P4

C105  
R69  
R60

R13  
R15  
R11

C27  
C2  
C13

C107  
C52  
P4

C105  
R69  
R60

R13  
R15  
R11

C27  
C2  
C13

C107  
C52  
P4

C105  
R69  
R60

R13  
R15  
R11

C27  
C2  
C13

C107  
C52  
P4

C105  
R69  
R60

R13  
R15  
R11

C27  
C2  
C13

C107  
C52  
P4

C105  
R69  
R60

R13  
R15  
R11

C27  
C2  
C13

C107  
C52  
P4

C105  
R69  
R60

R13  
R15  
R11

C27  
C2  
C13

C107  
C52  
P4

C105  
R69  
R60

R13  
R15  
R11

C27  
C2  
C13

C107  
C52  
P4

C105  
R69  
R60

R13  
R15  
R11

C27  
C2  
C13

C107  
C52  
P4

C105  
R69  
R60

R13  
R15  
R11

C27  
C2  
C13

C107  
C52  
P4

C105  
R69  
R60









1723AU002A 026-4001-001

PELLA PCB 026-4001-000 REV09

S/N

LAIRD

BMI-S-210-C

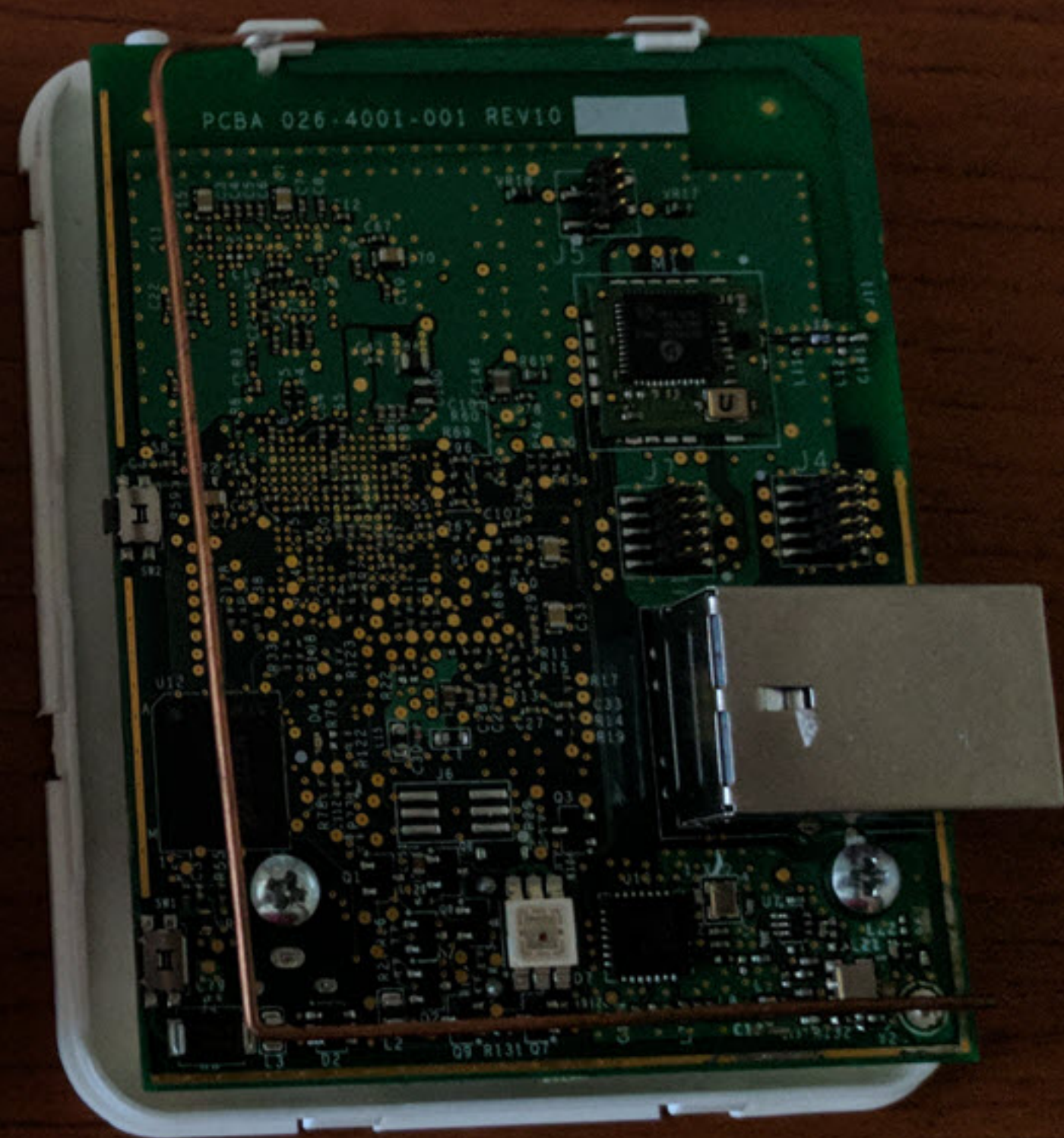
⊕  
REMOVE  
SEAL  
AFTER  
WASHING

U9  
C111  
C142  
C144  
R73  
R76  
VR3  
VR4  
VR7  
VR8  
VR5  
R74  
R75  
R14  
R15  
R14  
VR10  
R71  
C102  
C34  
VR7  
R77  
R724  
VR6  
VR5  
VR10  
R71  
C102  
C34  
VR7  
R77  
R724  
VR6  
VR5

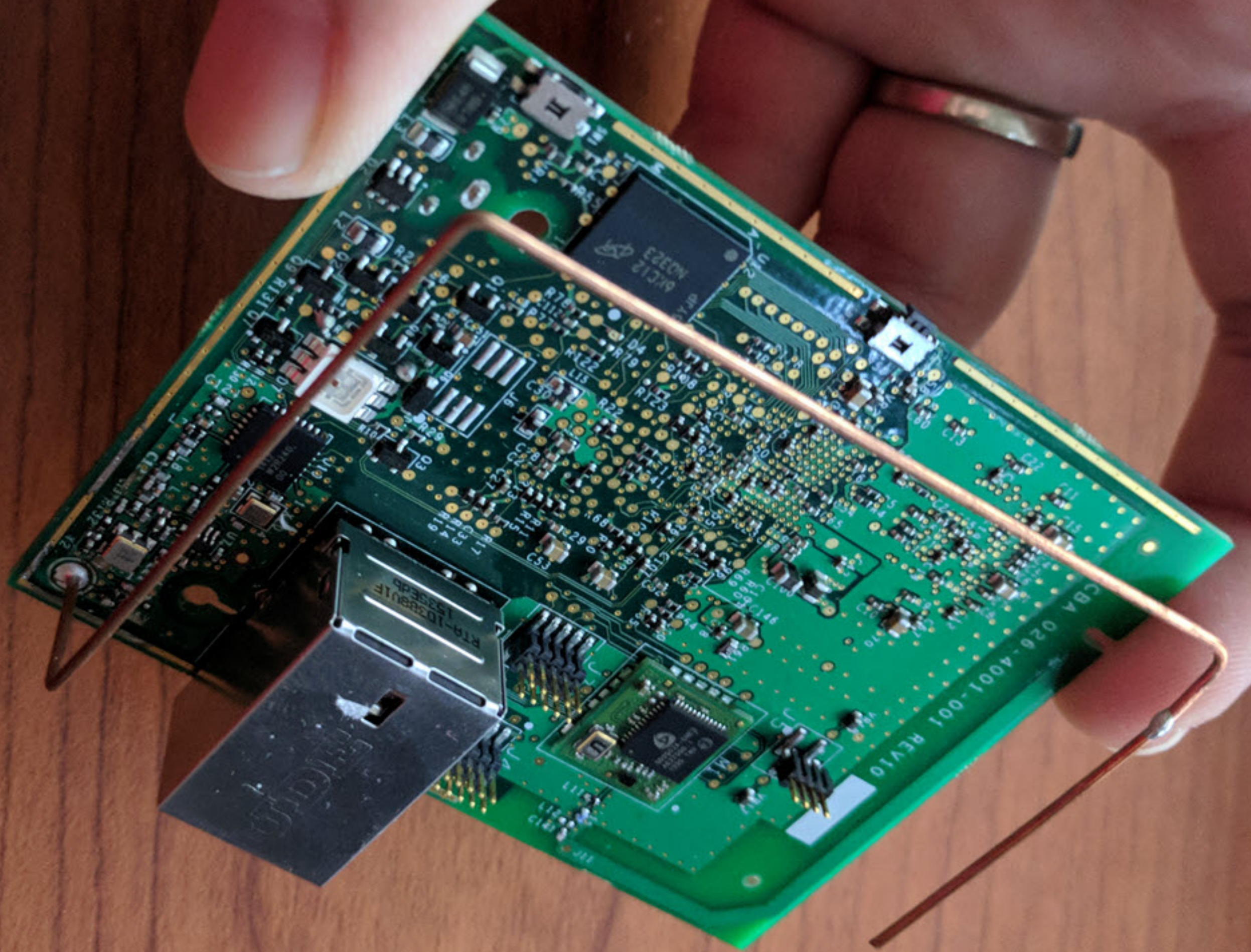
C140  
G140  
C132  
C119  
C121  
C129

R125  
R81  
R82











PCBA 026-4001-001 REV10



U12  
6K12  
NQ323  
SYJP

M1  
80502Z-0M0  
U



SX1276  
1412  
W2R240

E46  
9188



1723AU002A 026-4001-001



PELLA PCB 026-4001-000 REV09

S/N

BMI-S-210-C

LAIRD

U9 J11

C150

C140

C132

C125

C110

C100

VR20

VR19

VR15

R125

G5

R124

R123

R122

R121

R120

R119

R118

R117

R116

R115

R114

R113

R112

R111

R110

R109

R108

R107

R106

R105

R104

R103

R102

R101

R100

R99

R98

R97

R96

R95

R94

R93

R92

R91

R90

R89

R88

R87

R86

R85

R84

L3

C30

C29

C28

C27

C26

C25

C24

C23

C22

C21

C20

C19

C18

C17

C16

C15

C14

C13

C12

C11

C10

C9

C8

C7

C6

C5

C4

C3

C2

C1

C0

C-1

C-2

C-3

C-4

C-5

C-6

C-7

C-8

C-9

C-10

C-11

C-12







CARSM 94V-0  
16-46

S/N: [ ]

PELLA PCB 026-4001-000 REV09

Memory module components:

- U1:** NAND Flash, NANYA A1517, NT51UD04M16HG-AC, 506613W1EY 3.1W
- U2:** NAND Flash, M86Z, CTGV1414A, CHINA
- U3:** NAND Flash, M86Z, CTGV1414A, CHINA

Other components on the module:

- R66, C58, C49, U2, C94, C81, C80, C82, C72, U1
- C102, C103, C104, C105, C106, C107, C108, C109, C110, C111, C112, C113, C114, C115, C116, C117, C118, C119, C120, C121, C122, C123, C124, C125, C126, C127, C128, C129, C130, C131, C132, C133, C134, C135, C136, C137, C138, C139, C140, C141, C142, C143, C144, C145, C146, C147, C148, C149, C150
- R71, R70, R73, VR16, VR13, R76, P11, VR12, R72, R74, R75, R77, R78, R79, R80, R81, R82, R83, R84, R85, R86, R87, R88, R89, R90, R91, R92, R93, R94, R95, R96, R97, R98, R99
- VR7, R124, VR6, VR5, VR4, VR3, VR2, VR1
- C150
- R125, R4, R5, R6, R7, R8, R9, R10, R11, R12, R13, R14, R15, R16, R17, R18, R19, R20, R21, R22, R23, R24, R25, R26, R27, R28, R29, R30, R31, R32, R33, R34, R35, R36, R37, R38, R39, R40, R41, R42, R43, R44, R45, R46, R47, R48, R49, R50, R51, R52, R53, R54, R55, R56, R57, R58, R59, R60, R61, R62, R63, R64, R65, R66, R67, R68, R69, R70, R71, R72, R73, R74, R75, R76, R77, R78, R79, R80, R81, R82, R83, R84, R85, R86, R87, R88, R89, R90, R91, R92, R93, R94, R95, R96, R97, R98, R99, R100

PCB features and components:

- Micro-USB port
- Large circular cutout
- Various surface components: R40, R41, R42, R43, R44, R45, R46, R47, R48, R49, R50, R51, R52, R53, R54, R55, R56, R57, R58, R59, R60, R61, R62, R63, R64, R65, R66, R67, R68, R69, R70, R71, R72, R73, R74, R75, R76, R77, R78, R79, R80, R81, R82, R83, R84, R85, R86, R87, R88, R89, R90, R91, R92, R93, R94, R95, R96, R97, R98, R99, R100, C100, C101, C102, C103, C104, C105, C106, C107, C108, C109, C110, C111, C112, C113, C114, C115, C116, C117, C118, C119, C120, C121, C122, C123, C124, C125, C126, C127, C128, C129, C130, C131, C132, C133, C134, C135, C136, C137, C138, C139, C140, C141, C142, C143, C144, C145, C146, C147, C148, C149, C150



PELLA PCB 026-4001-000 REV09

U1

NANYA A1517  
NT5TU64M16HG-AC  
505013W1EV 3 TW

U2

R66

C58

C49

C94

C81

C80

C82

Detailed description: This section shows two microcontrollers, U1 and U2, mounted on a green PCB. U1 is a Nanya A1517 NT5TU64M16HG-AC with part number 505013W1EV 3 TW. U2 is a smaller microcontroller. Various passive components are connected to them, including resistors R66 and capacitors C58, C49, C94, C81, C80, and C82.

U3

M06Z  
CTGV1414A  
CHINA

U4

C14

C13

C10

C9

C8

C7

C6

C5

C4

C3

C2

C1

Detailed description: This section shows two microcontrollers, U3 and U4, mounted on a green PCB. U3 is a M06Z CTGV1414A from China. U4 is another microcontroller. A large number of capacitors (C1 through C14) are connected to these microcontrollers. Other components like C109, C103, C104, and C105 are also visible.

U9

C144

R10

R143

R142

R143

Detailed description: This section shows microcontroller U9 with associated components. It includes capacitors C144, C143, C142, and C143, and resistors R10, R143, R142, and R143.

VR7

C124

VR6

VR5

Detailed description: This section shows three voltage regulators, VR5, VR6, and VR7, each with an associated capacitor C124.

C140

R4

R3

R2

R1

Detailed description: This section shows four resistors, R1, R2, R3, and R4, and a capacitor C140.