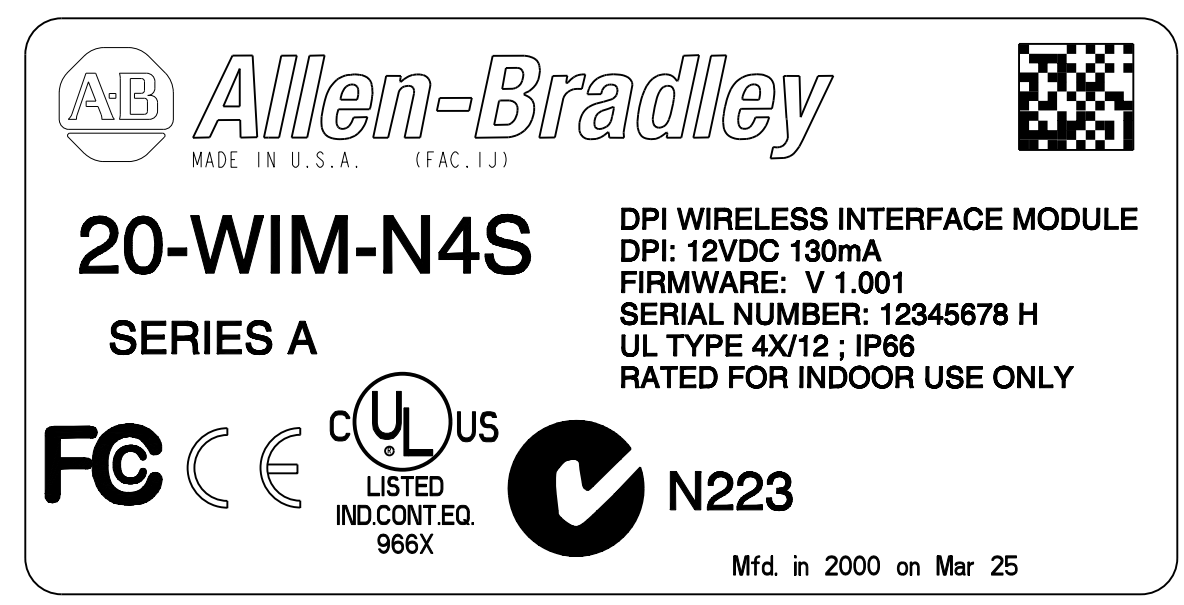
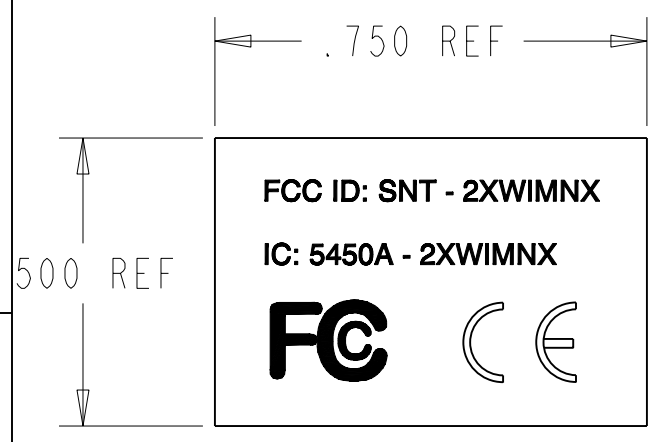


EXAMPLE DATA NAMEPLATE

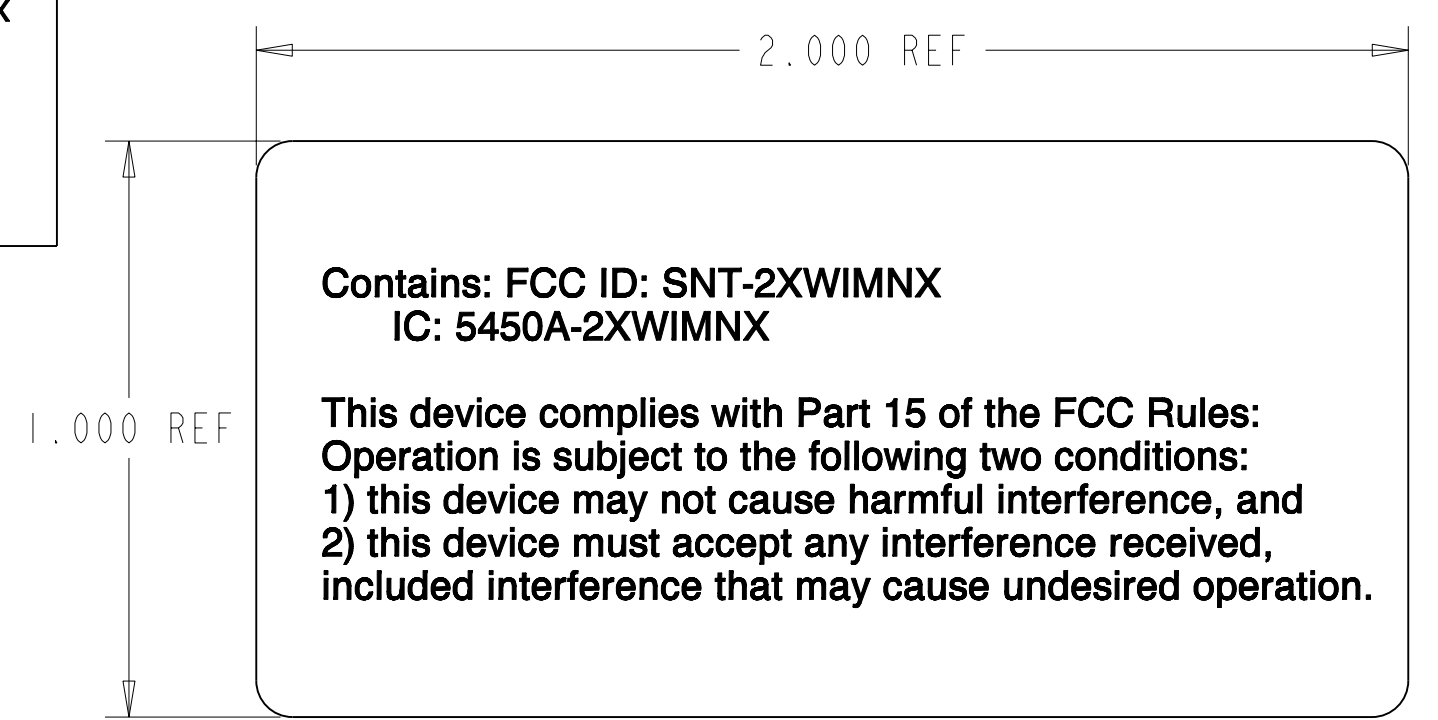


| BRAND LOGO (A) | CATALOG NUMBER (B) | SERIES (C) | FCC MARK (D) | CE MARK (E) | UL MARK (F) | C-TICK MARK (G) | PRODUCT TYPE (H) | POWER (J) | NEMA RATING (K) |
|-------------------|-----------------------|---------------|-----------------|----------------|----------------|--------------------|---------------------|------------------|---|
| ALLEN-BRADLEY | 20-WIM-N1 | A | YES | YES | YES | YES | DPI | DPI: 12VDC 130mA | N/A |
| ALLEN-BRADLEY | 20-WIM-N4S | A | YES | YES | YES | YES | DPI | DPI: 12VDC 130mA | UL TYPE 4X/12; IP66 RATED FOR INDOOR USE ONLY |
| ALLEN-BRADLEY | 22-WIM-N1 | A | YES | YES | YES | YES | DSI | DSI: 5VDC 170mA | N/A |
| ALLEN-BRADLEY | 22-WIM-N4S | A | YES | YES | YES | YES | DSI | DSI: 5VDC 170mA | UL TYPE 4X/12; IP66 RATED FOR INDOOR USE ONLY |
| ALLEN-BRADLEY | SK-CVR8-B4 | A | YES | YES | YES | YES | DPI | DPI: 12VDC 130mA | UL TYPE 4X/12; IP66 RATED FOR INDOOR USE ONLY |
| ALLEN-BRADLEY | SK-CVR8-D4 | A | YES | YES | YES | YES | DPI | DPI: 12VDC 130mA | UL TYPE 4X/12; IP66 RATED FOR INDOOR USE ONLY |
| ALLEN-BRADLEY | SK-CVR8-E4 | A | YES | YES | YES | YES | DPI | DPI: 12VDC 130mA | UL TYPE 4X/12; IP66 RATED FOR INDOOR USE ONLY |
| ALLEN-BRADLEY | SK-CVR8-B12 | A | YES | YES | YES | YES | DPI | DPI: 12VDC 130mA | UL TYPE 4X/12; IP66 RATED FOR INDOOR USE ONLY |
| ALLEN-BRADLEY | SK-CVR8-D12 | A | YES | YES | YES | YES | DPI | DPI: 12VDC 130mA | UL TYPE 4X/12; IP66 RATED FOR INDOOR USE ONLY |
| ALLEN-BRADLEY | SK-CVR8-E12 | A | YES | YES | YES | YES | DPI | DPI: 12VDC 130mA | UL TYPE 4X/12; IP66 RATED FOR INDOOR USE ONLY |

EXAMPLE PCB LABEL



**EXAMPLE DRIVE LABEL
(INSIDE COVER)**



NOTES:

1. TYPE NAMEPLATE WITH APPROPRIATE INFORMATION FROM TABLE
2. ALL TEXT AND LOGOS TO BE FILLED SOLID
3. RETAIN RELATIVE SIZE AND POSITION OF CHARACTERS AND MARKINGS AS SHOWN
4. DATA NAMEPLATE USES BLANK LABEL PART NUMBER 188593
5. DATE CODE INDICATES DATE OF FINAL TEST FORMATTED PER EXAMPLE
6. PRINT FIRMWARE REVISION VXX.XXX AS FLASHED INTO UNIT
7. SERIAL NUMBER INFORMATION PRINTED OUT IN THIS FIELD
8. 2-D BARCODE TO READ OUT CATALOG NUMBER, FIRMWARE REVISION, AND SERIAL NUMBER
9. INDICATE COUNTRY OF ORIGIN OF MANUFACTURER AND APPROPRIATE FACILITY CODE.
10. PCB LABEL USES PART NUMBER 321065-Q01

PARTS MUST CONFORM TO APPLICABLE ROCKWELL AUTOMATION MANUFACTURING STANDARDS
CAD DOCUMENT
 FILE NAME 354578-12

| REFERENCES | | PRODUCT DATA NAMEPLATES WIRELESS INTERFACE PRODUCTS | | THIS DRAWING IS THE PROPERTY OF ROCKWELL AUTOMATION, INC. OR ITS SUBSIDIARIES AND MAY NOT BE COPIED, USED OR DISCLOSED FOR ANY PURPOSE EXCEPT AS AUTHORIZED IN WRITING BY ROCKWELL AUTOMATION, INC. |
|------------------------|--|--|---------------|---|
| REVISION AUTHORIZATION | DIMENSIONS APPLY BEFORE SURFACE TREATMENT DIMENSIONS IN INCHES TOLERANCES UNLESS OTHERWISE SPECIFIED | | | |
| 01 1011065 | .XX: ± | | | |
| | .XXX: ± | DR. P. HALPIN | DATE 10/25/04 | SHEET 1 OF 1 |
| | ANGLES: ± | CHKD. C. STEINWEG | DATE 10/25/04 | DWG SIZE C |
| | | APPD. S. BRAUN | DATE 10/25/04 | 354578-12 |