

Maximum Permissible Exposure Report

For

GRAUPNER CO.,LTD.

202Dong 8th F,18, Bucheon-ro 198beon-gil,Wonmi-gu, Bucheon-si,
Gyeonggi-do,South Korea

FCC ID: SNL-MZ10

FCC Rule(s):	<u>FCC Part 15.247</u>
Product Description:	<u>2.4GHz Radio Controller</u>
Tested Model:	<u>MZ-10</u>
Report No.:	<u>HCT17ER138E-2</u>
Tested Date:	<u>2017-10-09 to 2017-10-28</u>
Issued Date:	<u>2017-10-29</u>
Tested By:	<u>Jason Su / Engineer</u>
Reviewed By:	<u>Silin Chen / EMC Manager</u>
Approved & Authorized By:	<u>Jandy So / PSQ Manager</u>
Prepared By:	

Jason Su
Silin Chen
Jandy So

Shenzhen SEM Test Technology Co. Ltd
1/F, Building A, Hongwei Industrial Park, Liuxian 2nd Road,
Bao'an District, Shenzhen, 518101,China
Tel.: +86-755-33663308 Fax.: +86-755-33663309 Website: www.semtest.com.cn

Note: This test report is limited to the above client company and the product model only. It may not be duplicated without prior permitted by Shenzhen SEM Test Technology Co., Ltd.

TABLE OF CONTENTS

1. GENERAL INFORMATION.....3

1.1 PRODUCT DESCRIPTION FOR EQUIPMENT UNDER TEST (EUT).....3

1.2 TEST STANDARDS.....3

1.3 REQUIREMENT.....4

1.4 MEASUREMENT RESULT.....5

1.5 CONCLUSION6

1. GENERAL INFORMATION

1.1 Product Description for Equipment Under Test (EUT)

Client Information	
Applicant:	GRAUPNER CO.,LTD.
Address of applicant:	202Dong 8th F,18, Bucheon-ro 198beon-gil,Wonmi-gu, Bucheon-si, Gyeonggi-do,South Korea
Manufacturer:	SJ Technology(Shenzhen) Co.,Ltd
Address of manufacturer:	F6, 1 Bldg, A Area, Yintianxifa Industrial Area, Xixiang Town, Bao'an District, Shenzhen, Guangdong Province, China

General Description of EUT	
Product Name:	2.4GHz Radio Controller
Trade Name:	HoTT
Model No.:	MZ-10
Adding Model(s):	N/A
Rated Voltage:	DC4.2V from battery
Power Adapter Model:	N/A
<i>Note: The test data is gathered from a production sample provided by the manufacturer.</i>	

Technical Characteristics of EUT	
Software Version:	1.0
Frequency Range:	2404.056~2479.095MHz
RF Output Power:	15.89 dBm (Conducted)
Data Rate:	N/A
Modulation:	MSK
Quantity of Channels:	75
Channel Separation:	1MHz
Type of Antenna:	Dedicated antenna
Antenna Gain:	1.58dBi

1.2 Test Standards

According to §1.1307(b)(1), systems operating under the provisions of this section shall be operated in a manner that ensures that the public is not exposed to radio frequency energy level in excess of the Commission's guidelines.

According to §1.1310, KDB447498 and §2.1093 RF exposure is required.

OET Bulletin 65 Supplement C [June 2001]: Evaluating Compliance with FCC Guidelines for Human Exposure to Radio frequency Electromagnetic Fields

KDB447498 D01 General RF Exposure Guidance v06: RF Exposure Procedures and Equipment Authorization

Policies for Mobile and Portable Devices.

Maintenance of compliance is the responsibility of the manufacturer. Any modification of the product, which result in lowering the emission, should be checked to ensure compliance has been maintained.

1.3 Requirement

According to KDB447498 D01 General RF Exposure Guidance v06 Section 4.3.1 Standalone SAR test exclusion considerations: “Unless specifically required by the published RF exposure KDB procedures, standalone 1-g head or body and 10-g extremity SAR evaluation for general population exposure conditions, by measurement or numerical simulation, is not required when the corresponding SAR Test Exclusion Threshold condition(s), listed below, is (are) satisfied. These test exclusion conditions are based on source-based time-averaged maximum conducted output power of the RF channel requiring evaluation, adjusted for tune-up tolerance, and the minimum test separation distance required for the exposure conditions.²⁸ The minimum test separation distance defined in 4.1 f) is determined by the smallest distance from the antenna and radiating structures or outer surface of the device, according to the host form factor, exposure conditions and platform requirements, to any part of the body or extremity of a user or bystander. To qualify for SAR test exclusion, the test separation distances applied must be fully explained and justified, typically in the SAR measurement or SAR analysis report, by the operating configurations and exposure conditions of the transmitter and applicable host platform requirements, according to the required published RF exposure KDB procedures. When no other RF exposure testing or reporting are required, a statement of justification and compliance must be included in the equipment approval, in lieu of the SAR report, to qualify for SAR test exclusion. When required, the device specific conditions described in the other published RF exposure KDB procedures must be satisfied before applying these SAR test exclusion provisions; for example, handheld PTT two-way radios, handsets, laptops and tablets, etc.²⁹”

1) The 1-g and 10-g SAR test exclusion thresholds for 100 MHz to 6 GHz at test separation distances ≤ 50 mm are determined by:

$[(\text{max. power of channel, including tune-up tolerance, mW})/(\text{min. test separation distance, mm})] \cdot [\sqrt{f(\text{GHz})}]$
 ≤ 3.0 for 1-g SAR and ≤ 7.5 for 10-g extremity SAR,³⁰ where

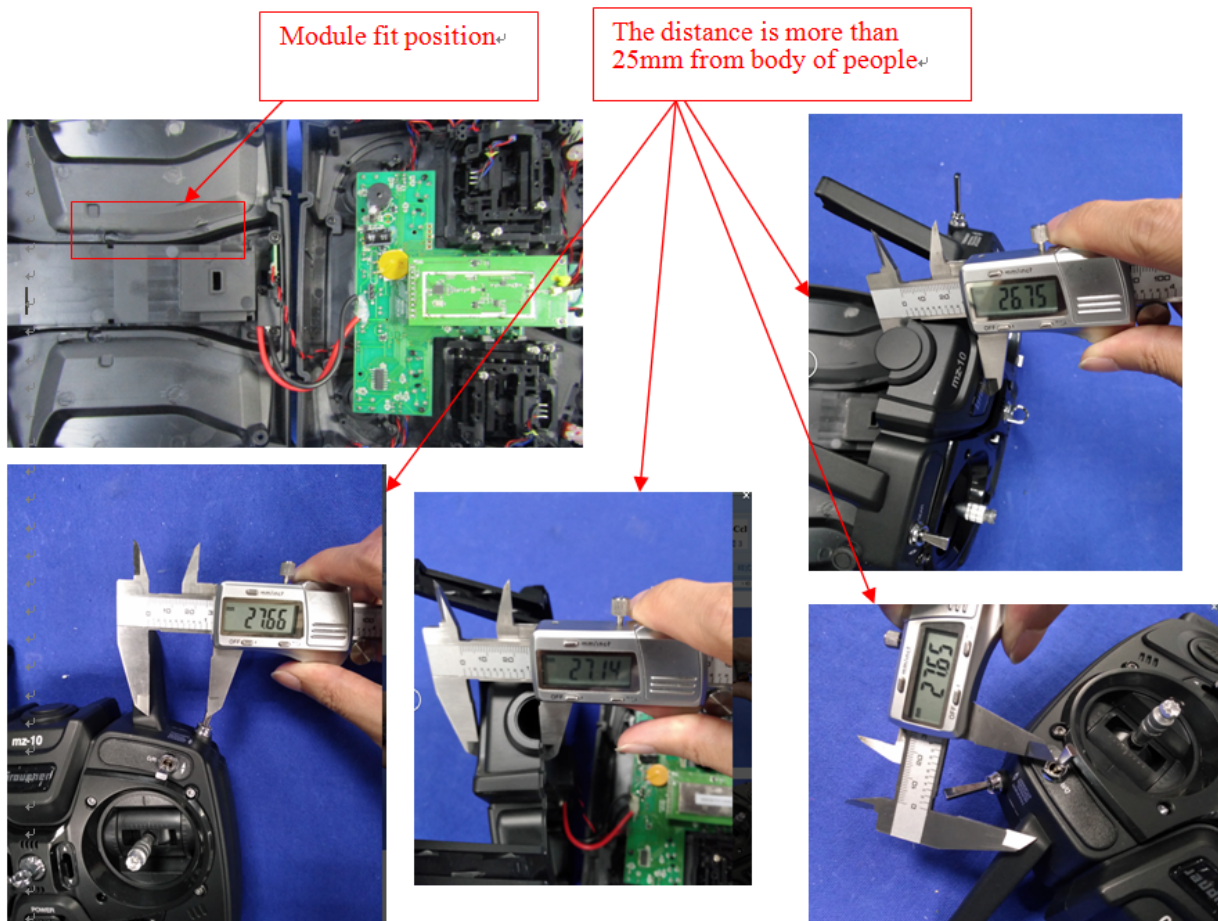
- $f(\text{GHz})$ is the RF channel transmit frequency in GHz
- Power and distance are rounded to the nearest mW and mm before calculation³¹
- The result is rounded to one decimal place for comparison
- The values 3.0 and 7.5 are referred to as numeric thresholds in step b) below

The test exclusions are applicable only when the minimum test separation distance is ≤ 50 mm and for transmission frequencies between 100 MHz and 6 GHz. When the minimum test separation distance is < 5 mm, a distance of 5 mm according to 5) in section 4.1 is applied to determine SAR test exclusion.

According to KDB447498 D01 General RF Exposure Guidance v06 Appendix A: SAR Test Exclusion Thresholds for 100 MHz-6 GHz and ≤ 50 mm, Approximate SAR Test Exclusion Power Thresholds at Selected Frequencies and Test Separation Distances are illustrated in the following Table.

MHz	5	10	15	20	25	mm
150	39	77	116	155	194	<i>SAR Test Exclusion Threshold (mW)</i>
300	27	55	82	110	137	
450	22	45	67	89	112	
835	16	33	49	66	82	
900	16	32	47	63	79	
1500	12	24	37	49	61	
1900	11	22	33	44	54	
2450	10	19	29	38	48	
3600	8	16	24	32	40	
5200	7	13	20	26	33	
5400	6	13	19	26	32	
5800	6	12	19	25	31	

1.4 Measurement Result



Test Frequency (MHz)	Output Power (dBm)	Output Power including Power Drift (dBm)	Output Power including Power Drift (mW)	Separation Distance (mm)	SAR test exclusion thresholds	Verdict
2404.056	15.89	16.39	43.6	25	48	PASS
2440.561	15.10	15.60	36.3	25	48	PASS
2479.095	15.34	15.84	38.4	25	48	PASS

Note: The output power including power drift is come from tune-up tolerance: ± 0.5 dBm.

1.5 Conclusion

The measurement results comply with the FCC Limit per 47 CFR 2.1093 for the uncontrolled RF Exposure and SAR Exclusion Threshold per KDB447498 D01 General RF Exposure Guidance v06, and the SAR is not required.

***** END OF REPORT *****