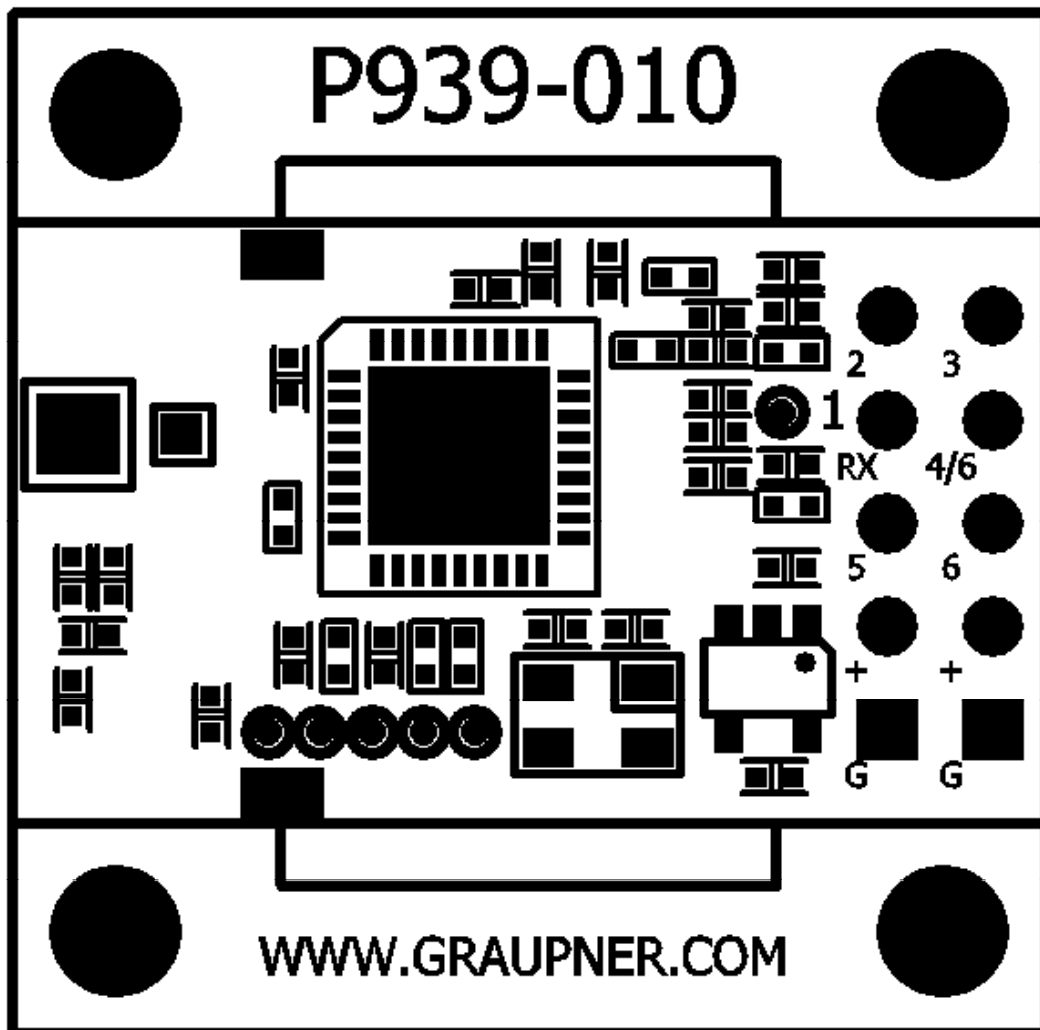


GR-12L SUMD+T Diversity Empfänger

Best.-Nr. S1045, S1046



Anleitung

Die Anleitung ist unter www.graupner.de im Downloadbereich des Produkts zu finden. Ggf. ist im „Suchen“-Feld der Homepage die Produktnummer oder Produktbezeichnung einzugeben.

Manual

Please download the manual at www.graupner.de from the download section of the product. You can search it at the search field of the home page with the product number or product name.



DE - VEREINFACHTE KONFORMITÄTSERKLÄRUNG

Hiermit erklärt **Graupner/SJ**, dass der **Graupner GR-12L SUMD+T Diversity HoTT Empfänger** der Richtlinie 2014/53/EU entsprechen.

Der vollständige Text der EU-Konformitätserklärung ist unter der Internetadresse **www.graupner.de** verfügbar.

EN - SIMPLIFIED DECLARATION OF CONFORMITY

Graupner/SJ hereby declares that the **Graupner GR-12L SUMD+T Diversity HoTT receiver** complies with the Directive 2014/53/EU.

The complete text of the EU Declaration of Conformity is available at the Internet address **www.graupner.de**.

Hersteller / Manufaktur

Graupner Co., Ltd

Post Code: 14557

8th F, 202 Dong, Chunui Techno-Park II, 18, 198 Street

Bucheon-ro, Wonmi-Gu, Bucheon-Shi, Gyeonggi-do

South Korea

Hinweise zum Umweltschutz



Dieses Symbol auf dem Produkt, der Gebrauchsanleitung oder der Verpackung weist darauf hin, dass dieses Produkt am Ende seiner Lebensdauer nicht über den normalen Haushaltsabfall entsorgt werden darf. Es muss an einem Sammelpunkt für das Recycling von elektrischen und elektronischen Geräten abgegeben werden.

Die Werkstoffe sind gemäß ihrer Kennzeichnung wiederverwertbar. Mit der Wiederverwendung, der stofflichen Verwertung oder anderen Formen der Verwertung von Altgeräten leisten Sie einen wichtigen Beitrag zum Umweltschutz.

Batterien und Akkus müssen aus dem Gerät entfernt werden und bei einer entsprechenden Sammelstelle getrennt entsorgt werden. Bitte erkundigen Sie sich bei der Gemeindeverwaltung nach der zuständigen Entsorgungsstelle.

Notes on environmental protection



If this symbol is on the product, instructions for use or packaging, it indicates that the product may not be disposed with normal household waste once it has reached the end of its service life. It must be turned over to a recycling collection point for electric and electronic apparatus.

Individual markings indicate which materials can be recycled. You make an important contribution to protection of the environment by utilizing facilities for reuse, material recycling or other means of exploiting obsolete equipment.

Batteries must be removed from the unit and disposed of separately at an appropriate collection point. Please inquire if necessary from the local authority for the appropriate disposal site.

FCC Warning

This device complies with Part 15 of the FCC Rules. Operation is subject to the following two conditions:

- (1) this device may not cause harmful interference, and
- (2) this device must accept any interference received, including interference that may cause undesired operation. Changes or modifications not expressly approved by the party responsible for compliance could void the user's authority to operate the equipment.

Note: This equipment has been tested and found to comply with the limits for a Class B digital device, pursuant to part 15 of the FCC Rules. These limits are designed to provide reasonable protection against harmful interference in a residential installation. This equipment generates, uses and can radiate radio frequency energy and, if not installed and used in accordance with the instructions, may cause harmful interference to radio communications. However, there is no guarantee that interference will not occur in a particular installation. If this equipment does cause harmful interference to radio or television reception, which can be determined by turning the equipment off and on, the user is encouraged to try to correct the interference by one or more of the following measures:

- Reorient or relocate the receiving antenna.
- Increase the separation between the equipment and receiver.
- Connect the equipment into an outlet on a circuit different from that to which the receiver is connected.
- Consult the dealer or an experienced radio/TV technician for help.

Changes or modifications to this unit not expressly approved by the party responsible for compliance could void the user's authority to operate the equipment.

The user should maintain a minimum distance of 20 cm between the device and the user's body.