

Annex 2: Internal EUT photographs  
to  
**TEST REPORT**  
No.: 6-0171-12-5-2a\_C1







According to:  
**FCC Regulations**  
Part §15.209, Part 22 & Part 24  
**IC-Regulations**  
RSS-132 Issue 2, RSS-133 Issue 5 &  
RSS-Gen Issue 3

for

**CARLO GAVAZZI CONTROLS SPA**

**UNIVERSAL MOBILE MODEM FOR DATA COMMUNICATION  
VMU-WAUMM2X**

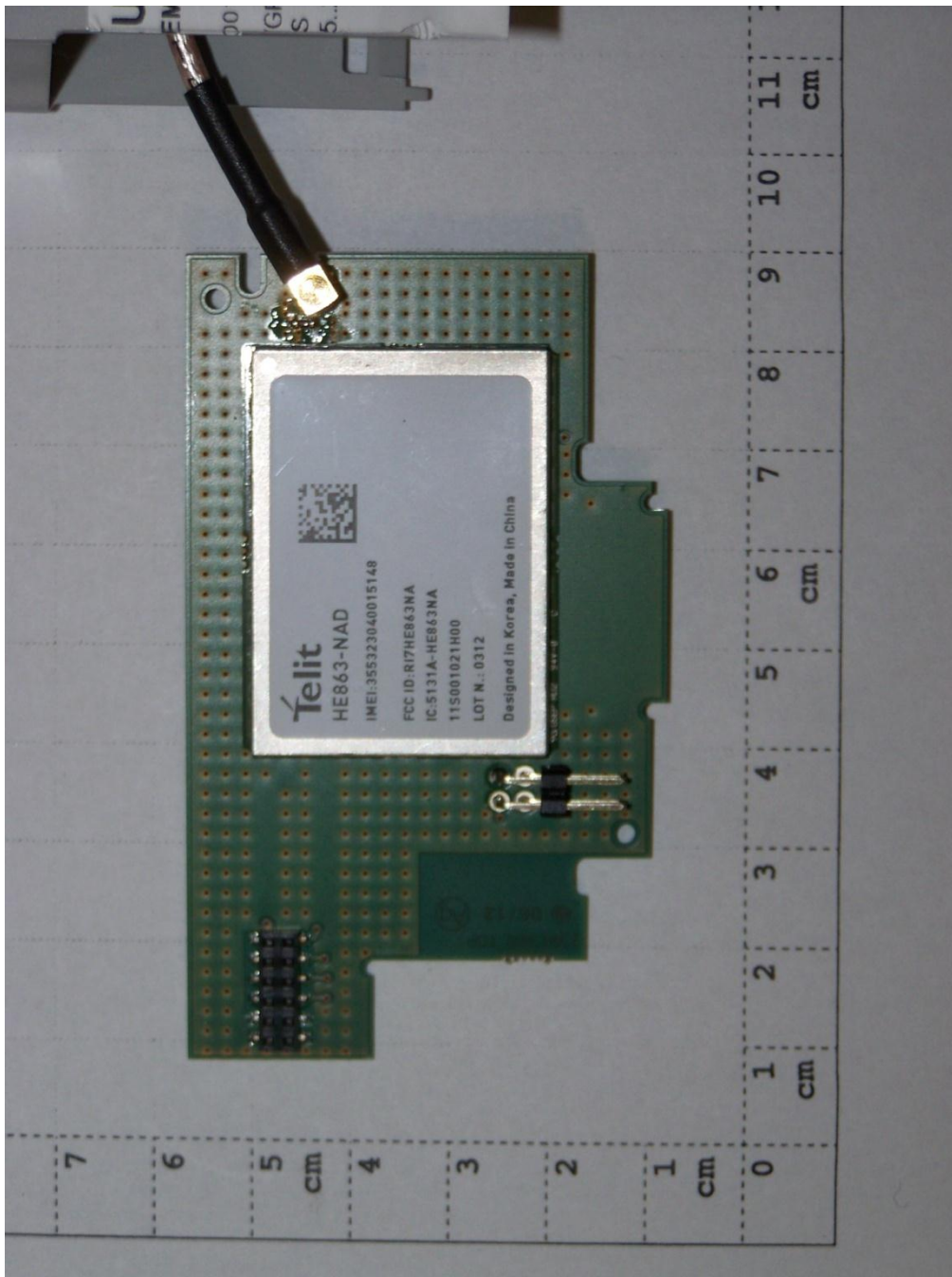
*FCC ID: SNJUMMNAD  
IC: 7118D-UMMNAD*

Laboratory Accreditation and Listings			
 Deutsche Akkreditierungsstelle D-PL-12047-01-01	 FEDERAL COMMUNICATIONS COMMISSION U.S.A. Reg. No.: 736496 MRA US-EU 0003	 Industry Canada Reg. No.: 3462D-1 3462D-2 3462D-3	 Reg. No.: R-2665, R-2666 C-2914, T-1967 G-301
 LAB CODE 20011130-00		 AUTHORIZED RF LABORATORY	
accredited according to DIN EN ISO/IEC 17025			
<b>CETECOM GmbH</b> Laboratory Radio Communications & Electromagnetic Compatibility Im Teelbruch 116 • 45219 Essen • Germany Registered in Essen, Germany, Reg. No.: HRB Essen 8984 Tel.: + 49 (0) 20 54 / 95 19-954 • Fax: + 49 (0) 20 54 / 95 19-964 E-mail: info@cetecom.com • Internet: www.cetecom.com			

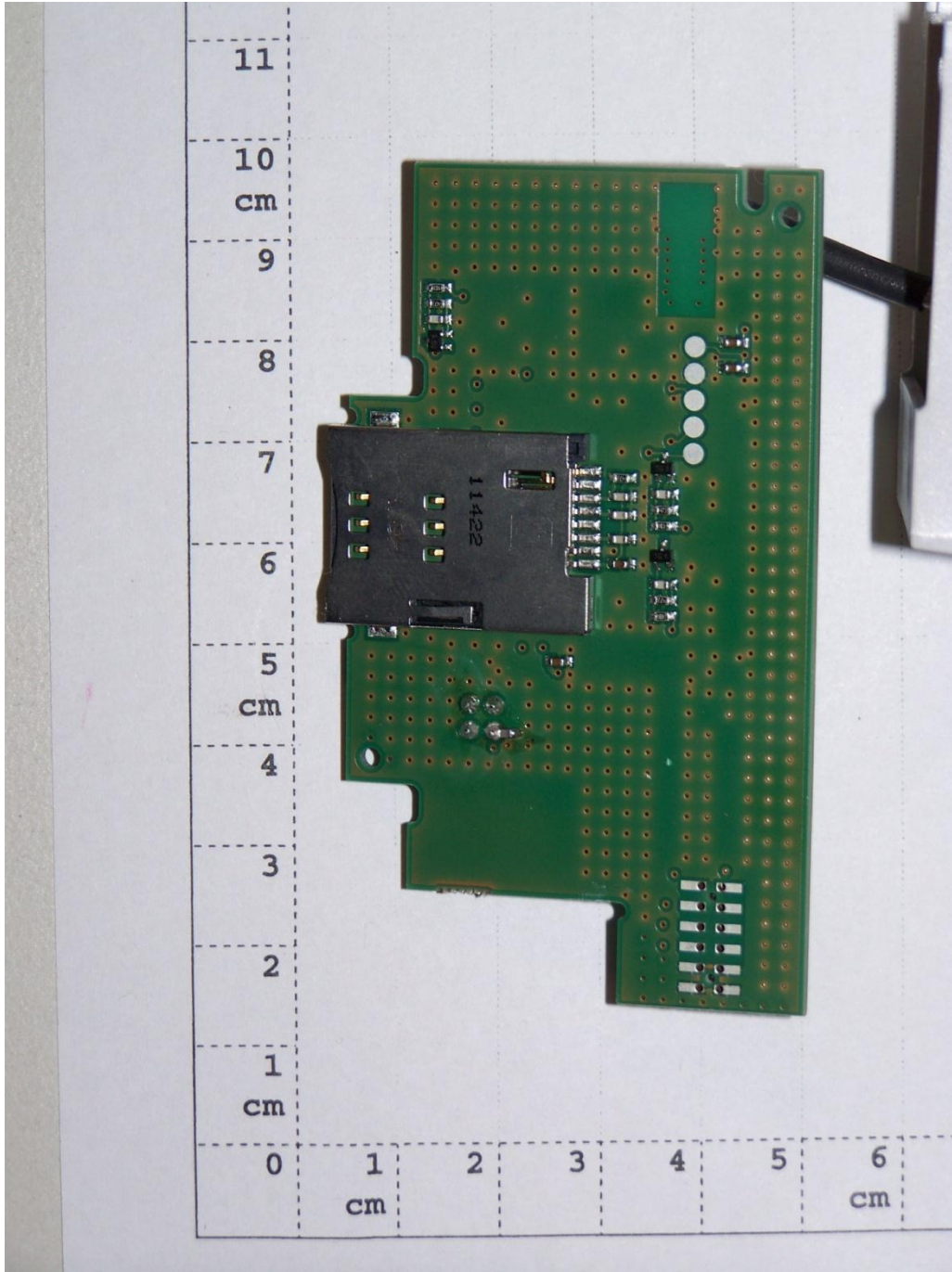
## **Table of contents**

**1. PHOTOS OF THE INTERNAL EUT'S .....3**

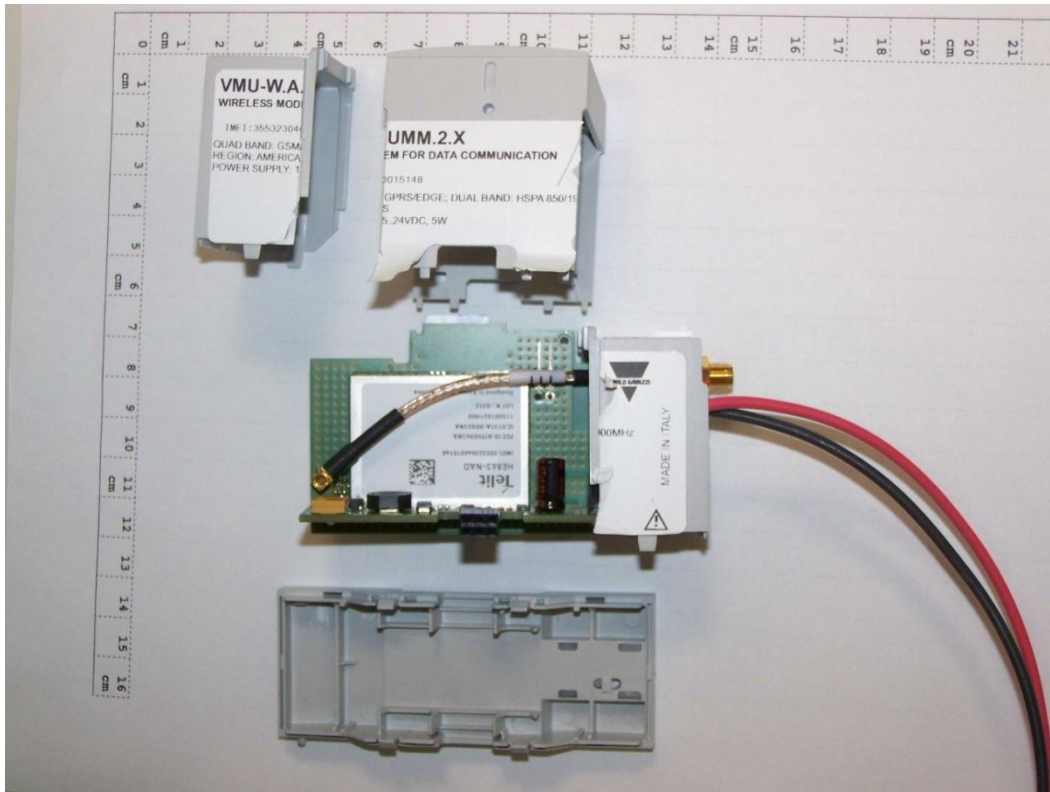
## 1. Photos of the internal EUT's



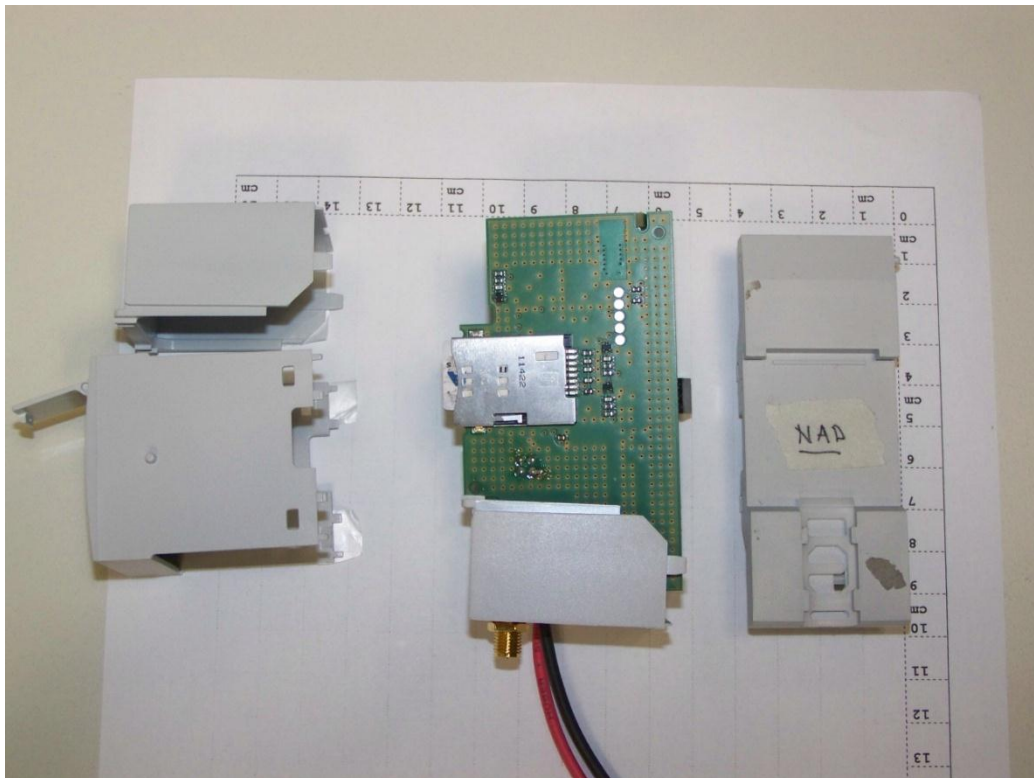
Inside view of EUT A (RF Data-module plug on the middle of the adapter board )



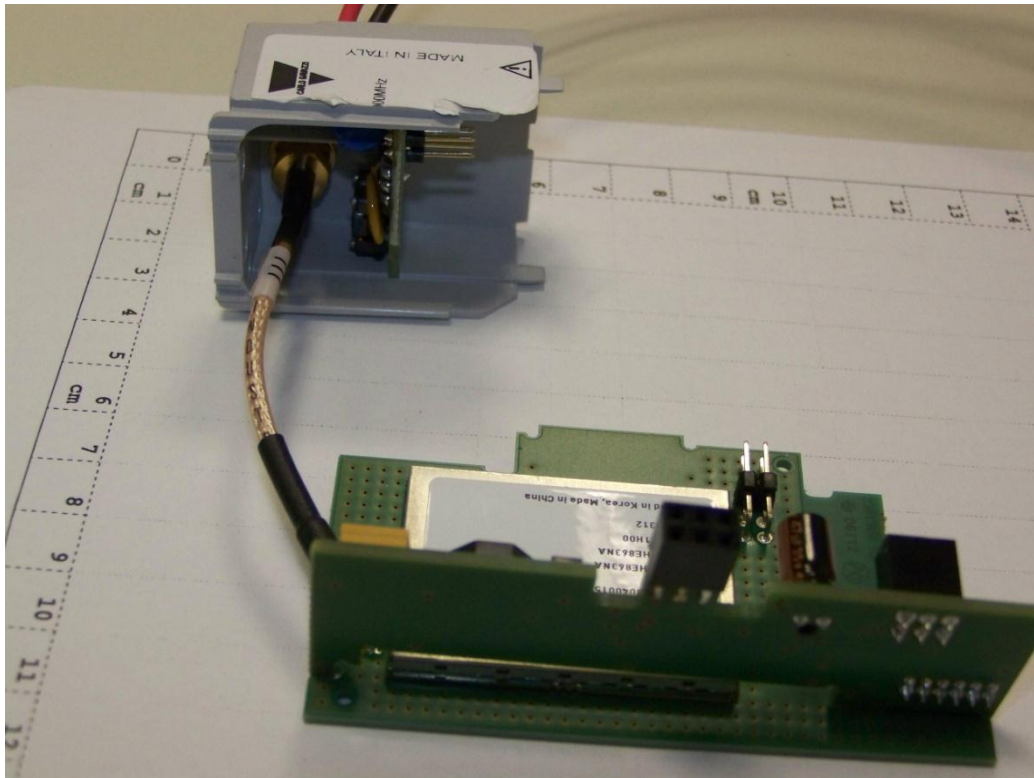
Inside of EUT A (rear side of RF Data module with SIM-Card holder)



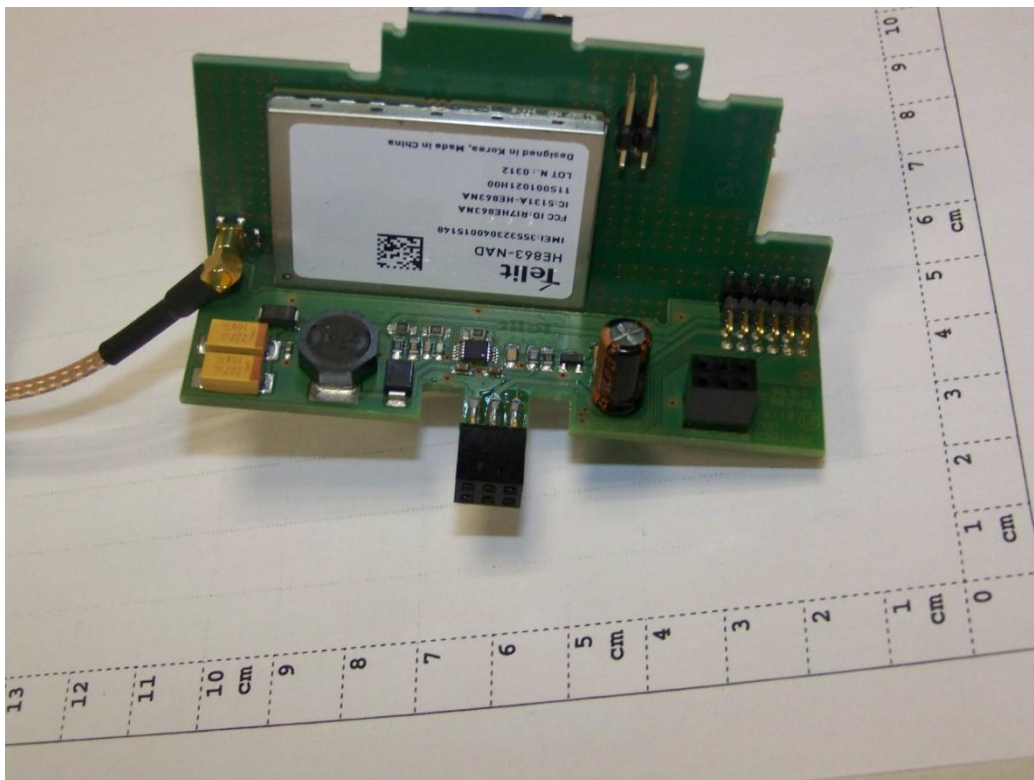
EUT (enclosure open, inside view of RF Data module of TELIT)



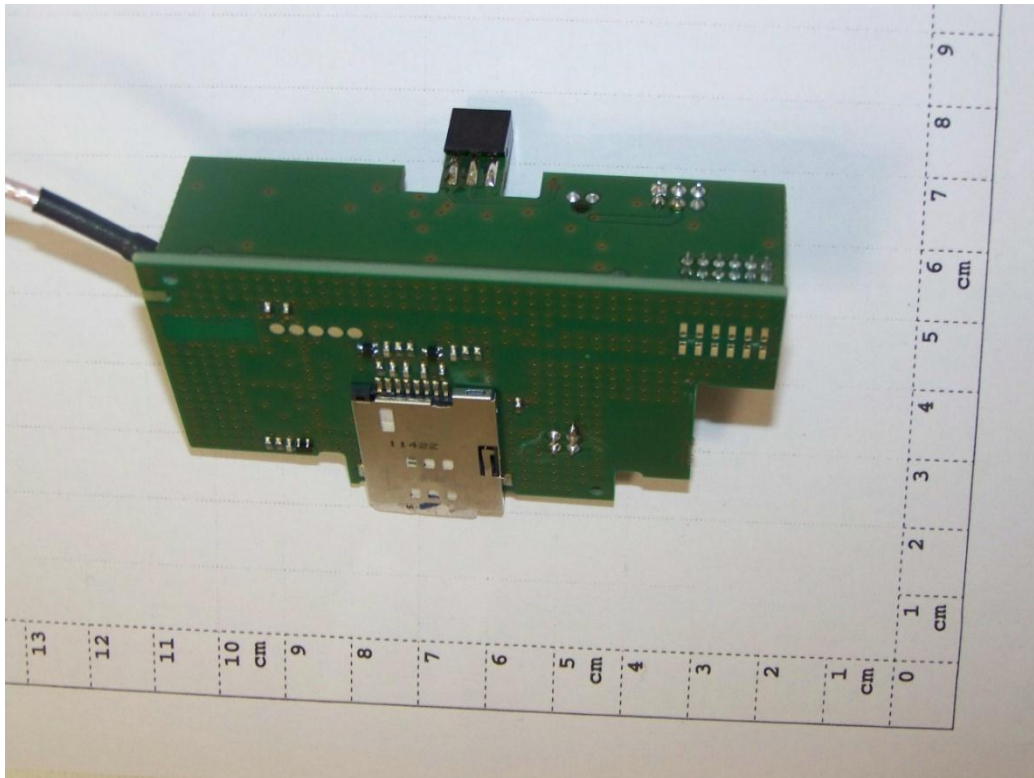
EUT (rear side with SIM-Card holder)



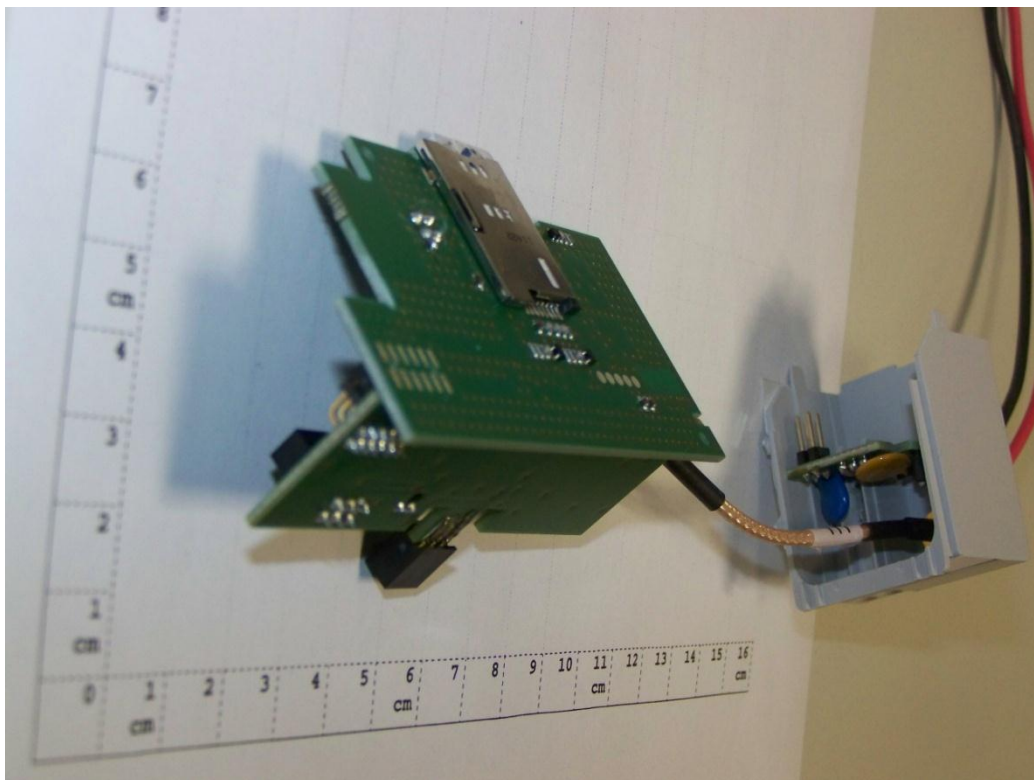
EUT (cable connection of external RF connector from TELIT RF data module PCB)



EUT (inside view of TELIT RF data module and serial communication socket on PCB's)



EUT (rear side of serial communication socket and SIM-card holder)



EUT (other side of RF connection cable and power supply cables are visible)