

TEST REPORT

Reference No...... : WTF15S0832543E
FCC ID : SNE-SMB-002
Applicant..... : Elgato Systems LLC
Address..... : 900 Kearny St, Suite 750 San Francisco, California, United States
Manufacturer : COMET INTERNATIONAL CORP.,
Address..... : 4Fl., No.130, Lane, 254, Huanhe S. Road, Sanchong Dirstrict, New Taipei City, Taiwan.
Product Name..... : Elgato Avea Flare
Model No : 2AF309901000, 2AF309901001, 2AF309901002
Standards..... : FCC CFR47 Part 15 Section 15.247:2014
Date of Receipt sample : Aug. 25, 2015
Date of Test..... : Aug. 26, 2015 – Sep. 08, 2015
Date of Issue..... : Sep.09, 2015
Test Result..... : **Pass**

Remarks:

The results shown in this test report refer only to the sample(s) tested, this test report cannot be reproduced, except in full, without prior written permission of the company. The report would be invalid without specific stamp of test institute and the signatures of compiler and approver.

Prepared By:

Waltek Services (Shenzhen) Co., Ltd.

Address: 1/F., Fukangtai Building, West Baima Road, Songgang Street, Baoan District, Shenzhen, Guangdong, China

Tel :+86-755-83551033

Fax:+86-755-83552400

Compiled by:

Lake Xie

Lake Xie / Test Engineer

Approved by:

Philo Zhong
A circular blue stamp with the text 'WALTEK SERVICES CO., LTD.' around the top edge and 'WALTEK TEST REPORT' around the bottom edge. In the center, there is a stylized 'W' logo.

Philo Zhong / Manager

2 Test Summary

Test Items	Test Requirement	Result
Radiated Emissions	15.205(a) 15.209(a)	PASS
Conducted Emissions	15.207(a)	PASS
6dB Bandwidth	15.247(a)(2)	PASS
Maximum Peak Output Power	15.247(b)(3),(4)	PASS
Power Spectral Density	15.247(e)	PASS
Band Edge	15.247(d)	PASS
Antenna Requirement	15.203	PASS
Maximum Permissible Exposure (Exposure of Humans to RF Fields)	1.1307(b)(1)	PASS

3 Contents

	Page
1 COVER PAGE	1
2 TEST SUMMARY	2
3 CONTENTS	3
4 GENERAL INFORMATION	5
4.1 GENERAL DESCRIPTION OF E.U.T.	5
4.2 DETAILS OF E.U.T.	5
4.3 CHANNEL LIST.....	5
4.4 TEST MODE	5
4.5 TEST FACILITY.....	6
5 EQUIPMENT USED DURING TEST	7
5.1 EQUIPMENTS LIST	7
5.2 MEASUREMENT UNCERTAINTY	8
5.3 TEST EQUIPMENT CALIBRATION	8
6 CONDUCTED EMISSIONS	9
6.1 E.U.T. OPERATION	9
6.2 EUT SETUP.....	9
6.3 MEASUREMENT DESCRIPTION	10
6.4 CONDUCTED EMISSION TEST RESULT	10
7 RADIATED EMISSIONS	12
7.1 EUT OPERATION.....	12
7.2 TEST SETUP	13
7.3 SPECTRUM ANALYZER SETUP	14
7.4 TEST PROCEDURE	15
7.5 SUMMARY OF TEST RESULTS	16
8 BAND EDGE MEASUREMENT	19
8.1 TEST PROCEDURE.....	19
8.2 TEST RESULT	20
9 6 DB BANDWIDTH MEASUREMENT	21
9.1 TEST PROCEDURE	21
9.2 TEST RESULT	21
10 MAXIMUM PEAK OUTPUT POWER	23
10.1 TEST PROCEDURE.....	23
10.2 TEST RESULT	23
11 POWER SPECTRAL DENSITY	25
11.1 TEST PROCEDURE.....	25
11.2 TEST RESULT	25
12 ANTENNA REQUIREMENT	27
13 RF EXPOSURE	28
13.1 REQUIREMENTS.....	28
13.2 THE PROCEDURES / LIMIT.....	28
13.3 MPE CALCULATION METHOD	29
14 PHOTOGRAPHS – MODEL 2AF309901002 TEST SETUP	30
14.1 PHOTOGRAPH – CONDUCTED EMISSION TEST SETUP AT TEST SITE 1#	30
14.2 RADIATED EMISSION	30
15 PHOTOGRAPHS - CONSTRUCTIONAL DETAILS	32

15.1	MODEL 2AF309901002 – EXTERNAL VIEW	32
15.2	MODEL 2AF309901002 - INTERNAL VIEW	36

4 General Information

4.1 General Description of E.U.T.

Product Name:	Elgato Avea Flare
Model No.:	2AF309901000, 2AF309901001, 2AF309901002
Model Difference:	There are only different model names , Appearance and LED Lamp number, 2AF309901000 have 24 LED Lamps, 2AF309901001 have 48 LED Lamps, 2AF309901002 have 60 LED Lamps.
Operation Frequency:	2402MHz ~ 2480MHz, separated by 2MHz,40 channels in total
The lowest oscillator:	32MHz
Type of modulation:	GFSK(BLE only)

4.2 Details of E.U.T.

Technical Data:	Battery DC 3.7V 1800mAH DC 5V, 1.0A, charging from adapter (Adapter Input: 100-240V~50/60Hz, 0.3A)
-----------------	--

4.3 Channel List

Channel No.	Frequency (MHz)	Channel No.	Frequency (MHz)	Channel No.	Frequency (MHz)	Channel No.	Frequency (MHz)
0	2402	1	2404	2	2406	3	2408
4	2410	5	2412	6	2414	7	2416
8	2418	9	2420	10	2422	11	2424
12	2426	13	2428	14	2430	15	2432
16	2434	17	2436	18	2438	19	2440
20	2442	21	2444	22	2446	23	2448
24	2450	25	2452	26	2454	27	2456
28	2458	29	2460	30	2462	31	2464
32	2466	33	2468	34	2470	35	2472
36	2474	37	2476	38	2478	39	2480

4.4 Test Mode

All test mode(s) and condition(s) mentioned were considered and evaluated respectively by performing full tests, the worst data were recorded and reported.

Table 1 Tests Carried Out Under FCC part 15.247

Test mode	Low channel	Middle channel	High channel
Transmitting	2402MHz	2440MHz	2480MHz

Table 2 Tests Carried Out Under FCC part 15.209

Test Item	Test Mode
Radiated Emissions	Communication

4.5 Test Facility

The test facility has a test site registered with the following organizations:

- **IC – Registration No.: 7760A**

Waltek Services(Shenzhen) Co., Ltd. Has been registered and fully described in a report filed with the Industry Canada. The acceptance letter from the Industry Canada is maintained in our files. Registration number 7760A, July 12, 2012.

- **FCC Test Site 1#– Registration No.: 880581**

Waltek Services(Shenzhen) Co., Ltd. EMC Laboratory `has been registered and fully described in a report filed with the (FCC) Federal Communications Commission. The acceptance letter from the FCC is maintained in our files. Registration 880581, April 29, 2014.

- **FCC Test Site 2#– Registration No.: 328995**

Waltek Services(Shenzhen) Co., Ltd. EMC Laboratory `has been registered and fully described in a report filed with the (FCC) Federal Communications Commission. The acceptance letter from the FCC is maintained in our files. Registration 328995, December 3, 2014.

5 Equipment Used during Test

5.1 Equipments List

Conducted Emissions Test Site 1#						
Item	Equipment	Manufacturer	Model No.	Serial No.	Last Calibration Date	Calibration Due Date
1.	EMI Test Receiver	R&S	ESCI	100947	Sep.15,2014	Sep.14,2015
2.	LISN	R&S	ENV216	101215	Sep.15,2014	Sep.14,2015
3.	Cable	Top	TYPE16(3.5M)	-	Sep.15,2014	Sep.14,2015
Conducted Emissions Test Site 2#						
Item	Equipment	Manufacturer	Model No.	Serial No.	Last Calibration Date	Calibration Due Date
1.	EMI Test Receiver	R&S	ESCI	101155	Sep.15,2014	Sep.14,2015
2.	LISN	SCHWARZBECK	NSLK 8128	8128-289	Sep.15,2014	Sep.14,2015
3.	Limiter	York	MTS-IMP-136	261115-001-0024	Sep.15,2014	Sep.14,2015
4.	Cable	LARGE	RF300	-	Sep.15,2014	Sep.14,2015
3m Semi-anechoic Chamber for Radiation Emissions Test site 1#						
Item	Equipment	Manufacturer	Model No.	Serial No.	Last Calibration Date	Calibration Due Date
1	EMC Analyzer	Agilent	E7405A	MY45114943	Sep.15,2014	Sep.14,2015
2	Active Loop Antenna	Beijing Dazhi	ZN30900A	-	Sep.15,2014	Sep.14,2015
3	Trilog Broadband Antenna	SCHWARZBECK	VULB9163	336	Apr.18,2015	Apr.17,2016
4	Coaxial Cable (below 1GHz)	Top	TYPE16(13M)	-	Sep.15,2014	Sep.14,2015
5	Broad-band Horn Antenna	SCHWARZBECK	BBHA 9120 D	667	Apr.18,2015	Apr.17,2016
6	Broad-band Horn Antenna	SCHWARZBECK	BBHA 9170	335	Apr.18,2015	Apr.17,2016
7	Broadband Preamplifier	COMPLIANCE DIRECTION	PAP-1G18	2004	Mar.16,2015	Mar.15,2016
8	Coaxial Cable (above 1GHz)	Top	1GHz-25GHz	EW02014-7	Apr.09,2015	Apr.08,2016
3m Semi-anechoic Chamber for Radiation Emissions Test site 2#						
Item	Equipment	Manufacturer	Model No.	Serial No	Last Calibration Date	Calibration Due Date
1	Test Receiver	R&S	ESCI	101296	Sep.15,2014	Sep.14,2015
2	Trilog Broadband Antenna	SCHWARZBECK	VULB9160	9160-3325	Sep.15,2014	Sep.14,2015
3	Amplifier	Compliance pirection systems inc	PAP-0203	22024	Sep.15,2014	Sep.14,2015
4	Cable	HUBER+SUHNER	CBL2	525178	Sep.15,2014	Sep.14,2015

RF Conducted Testing						
Item	Equipment	Manufacturer	Model No.	Serial No.	Last Calibration Date	Calibration Due Date
1.	EMC Analyzer (9k~26.5GHz)	Agilent	E7405A	MY45114943	Sep.15,2014	Sep.14,2015
2.	Spectrum Analyzer (9k-6GHz)	R&S	FSL6	100959	Sep.15,2014	Sep.14,2015
3.	Signal Analyzer (9k~26.5GHz)	Agilent	N9010A	MY50520207	Sep.15,2014	Sep.14,2015

5.2 Measurement Uncertainty

Parameter	Uncertainty
Radio Frequency	$\pm 1 \times 10^{-6}$
RF Power	± 1.0 dB
RF Power Density	± 2.2 dB
Radiated Spurious Emissions test	± 5.03 dB (Bilog antenna 30M~1000MHz)
	± 4.74 dB (Horn antenna 1000M~25000MHz)
Conducted Spurious Emissions test	± 3.64 dB (AC mains 150KHz~30MHz)

5.3 Test Equipment Calibration

All the test equipments used are valid and calibrated by CEPREI Certification Body that address is No.110 Dongguan Zhuang RD. Guangzhou, P.R.China.

6 Conducted Emissions

Test Requirement:	FCC CFR 47 Part 15 Section 15.207
Test Method:	ANSI C63.4:2003
Test Result:	N/A
Frequency Range:	150kHz to 30MHz
Class/Severity:	Class B
Limit:	66-56 dB μ V between 0.15MHz & 0.5MHz 56 dB μ V between 0.5MHz & 5MHz 60 dB μ V between 5MHz & 30MHz
Detector:	Peak for pre-scan (9kHz Resolution Bandwidth)

6.1 E.U.T. Operation

Operating Environment :

Temperature:	25.5 °C
Humidity:	51 % RH
Atmospheric Pressure:	101.2kPa

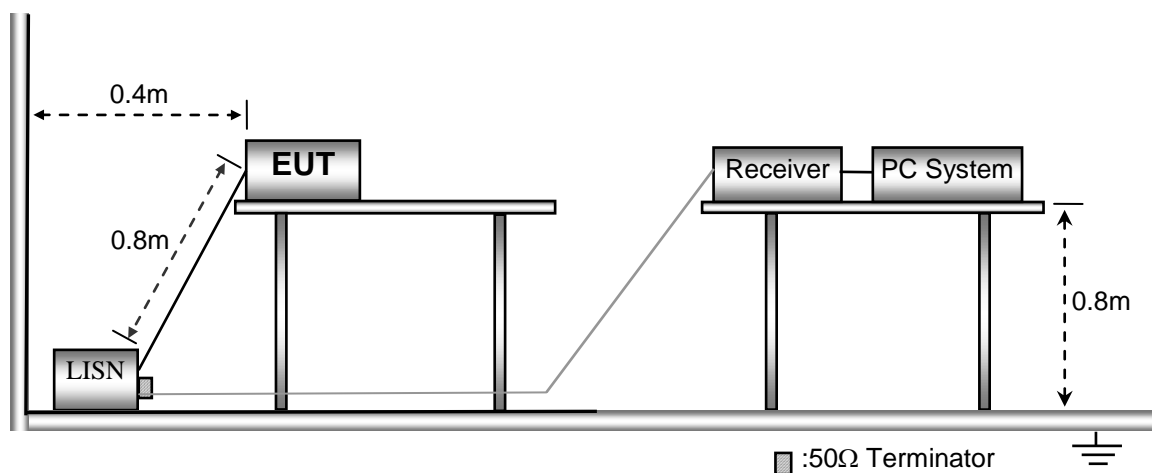
EUT Operation :

The test was performed in Transmitting mode.

Remark: The model 2AF309901002 is the worst case tested sample, and the data were shown in the report.

6.2 EUT Setup

The conducted emission tests were performed using the setup accordance with the ANSI C63.4:2003.

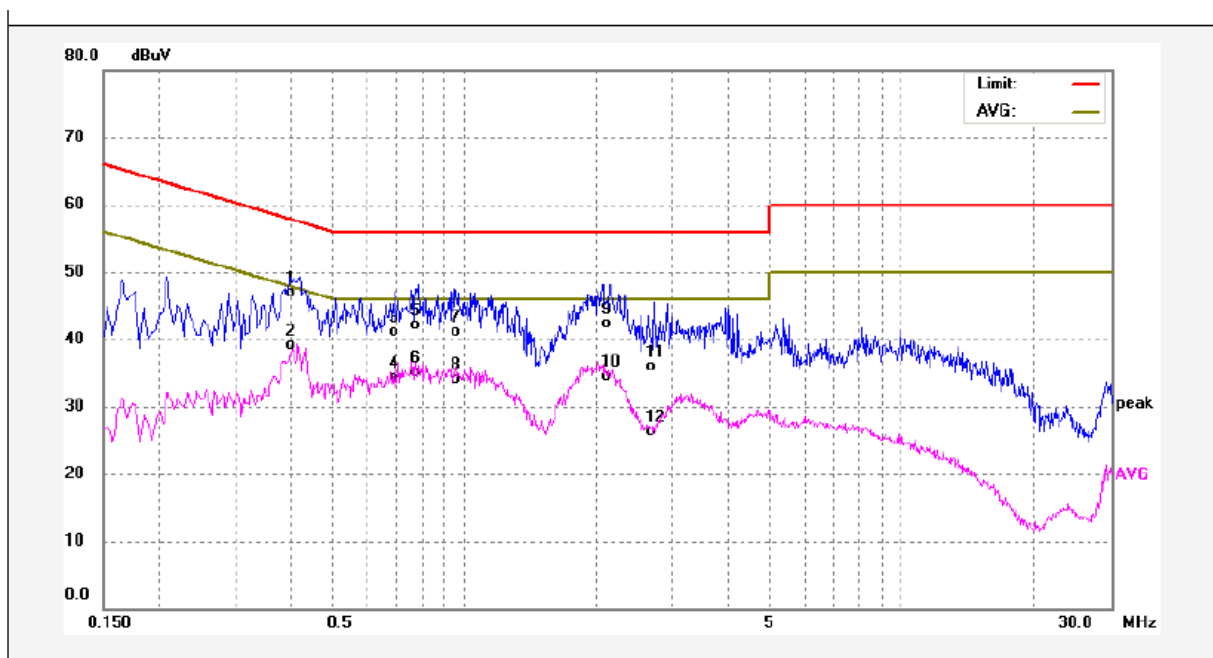


6.3 Measurement Description

The maximised peak emissions from the EUT was scanned and measured for both the Live and Neutral Lines. Quasi-peak & average measurements were performed if peak emissions were within 6dB of the average limit line.

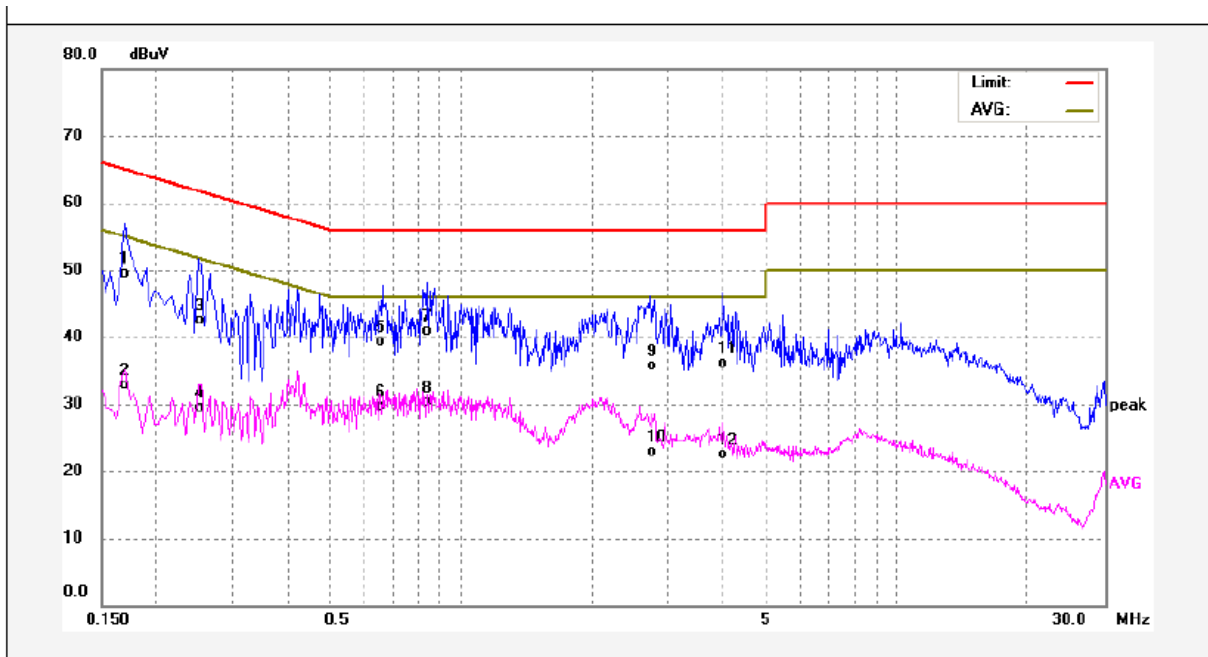
6.4 Conducted Emission Test Result

Live line:



No.	Freq. (MHz)	Reading (dBuV)	Factor (dB)	Result (dBuV)	Limit dBuV	Margin (dB)	Detector	Remark
1	0.4020	36.78	10.11	46.89	57.81	-10.92	QP	
2	0.4020	28.90	10.11	39.01	47.81	-8.80	AVG	
3	0.6940	30.94	10.17	41.11	56.00	-14.89	QP	
4	0.6940	24.19	10.17	34.36	46.00	-11.64	AVG	
5	0.7860	31.98	10.18	42.16	56.00	-13.84	QP	
6	0.7860	24.86	10.18	35.04	46.00	-10.96	AVG	
7	0.9500	30.98	10.20	41.18	56.00	-14.82	QP	
8	0.9500	23.91	10.20	34.11	46.00	-11.89	AVG	
9	2.1500	32.03	10.19	42.22	56.00	-13.78	QP	
10	2.1500	24.33	10.19	34.52	46.00	-11.48	AVG	
11	2.7100	25.65	10.20	35.85	56.00	-20.15	QP	
12	2.7100	16.12	10.20	26.32	46.00	-19.68	AVG	

Neutral line:



No.	Freq. (MHz)	Reading (dBuV)	Factor (dB)	Result (dBuV)	Limit dBuV	Margin (dB)	Detector	Remark
1	0.1700	39.43	10.10	49.53	64.96	-15.43	QP	
2	0.1700	22.85	10.10	32.95	54.96	-22.01	AVG	
3	0.2500	32.32	10.10	42.42	61.75	-19.33	QP	
4	0.2500	19.36	10.10	29.46	51.75	-22.29	AVG	
5	0.6620	29.22	10.16	39.38	56.00	-16.62	QP	
6	0.6620	19.47	10.16	29.63	46.00	-16.37	AVG	
7	0.8380	30.79	10.19	40.98	56.00	-15.02	QP	
8	0.8380	20.17	10.19	30.36	46.00	-15.64	AVG	
9	2.7139	25.53	10.20	35.73	56.00	-20.27	QP	
10	2.7139	12.74	10.20	22.94	46.00	-23.06	AVG	
11	3.9940	25.94	10.23	36.17	56.00	-19.83	QP	
12	3.9940	12.29	10.23	22.52	46.00	-23.48	AVG	

7 Radiated Emissions

Test Requirement: FCC CFR47 Part 15 Section 15.209 & 15.247

Test Method: ANSI C63.4:2003

Test Result: PASS

Measurement Distance: 3m

Limit:

Frequency (MHz)	Field Strength		Field Strength Limit at 3m Measurement Dist	
	uV/m	Distance (m)	uV/m	dBuV/m
0.009 ~ 0.490	2400/F(kHz)	300	10000 * 2400/F(kHz)	$20\log^{(2400/F(kHz))} + 80$
0.490 ~ 1.705	24000/F(kHz)	30	100 * 24000/F(kHz)	$20\log^{(24000/F(kHz))} + 40$
1.705 ~ 30	30	30	100 * 30	$20\log^{(30)} + 40$
30 ~ 88	100	3	100	$20\log^{(100)}$
88 ~ 216	150	3	150	$20\log^{(150)}$
216 ~ 960	200	3	200	$20\log^{(200)}$
Above 960	500	3	500	$20\log^{(500)}$

7.1 EUT Operation

Operating Environment:

Temperature: 25.5 °C

Humidity: 51 % RH

Atmospheric Pressure: 1016 mbar

EUT Operation:

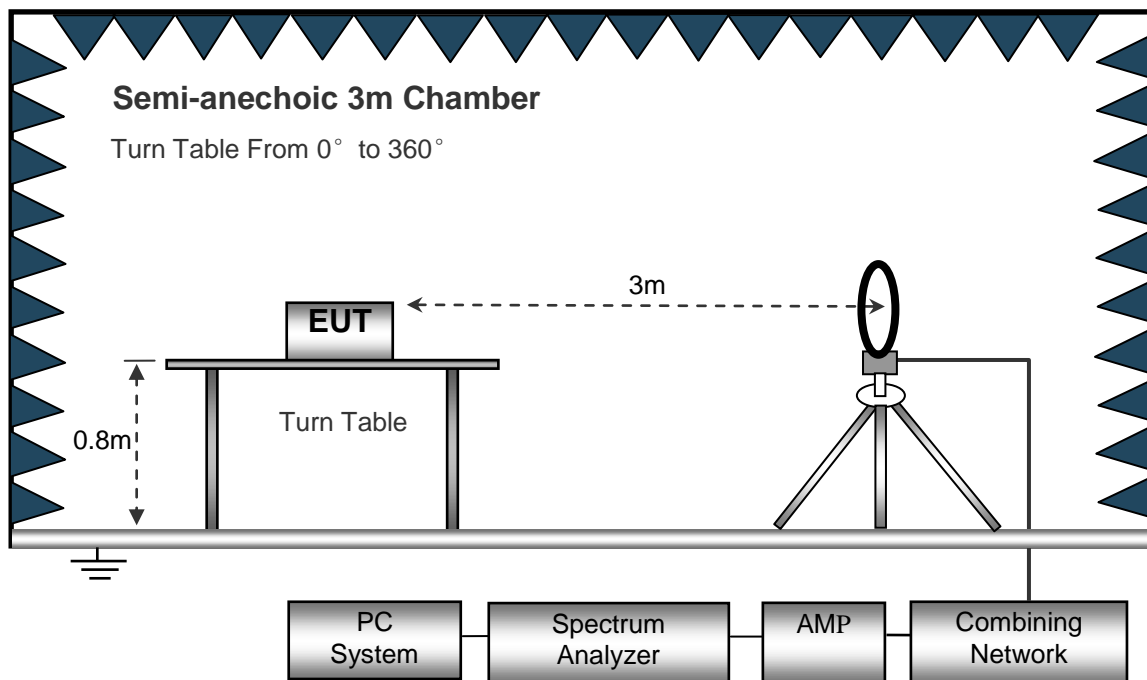
The test was performed in transmitting mode

Remark: The model 2AF309901002 is the worst case tested sample, and the data were shown in the report.

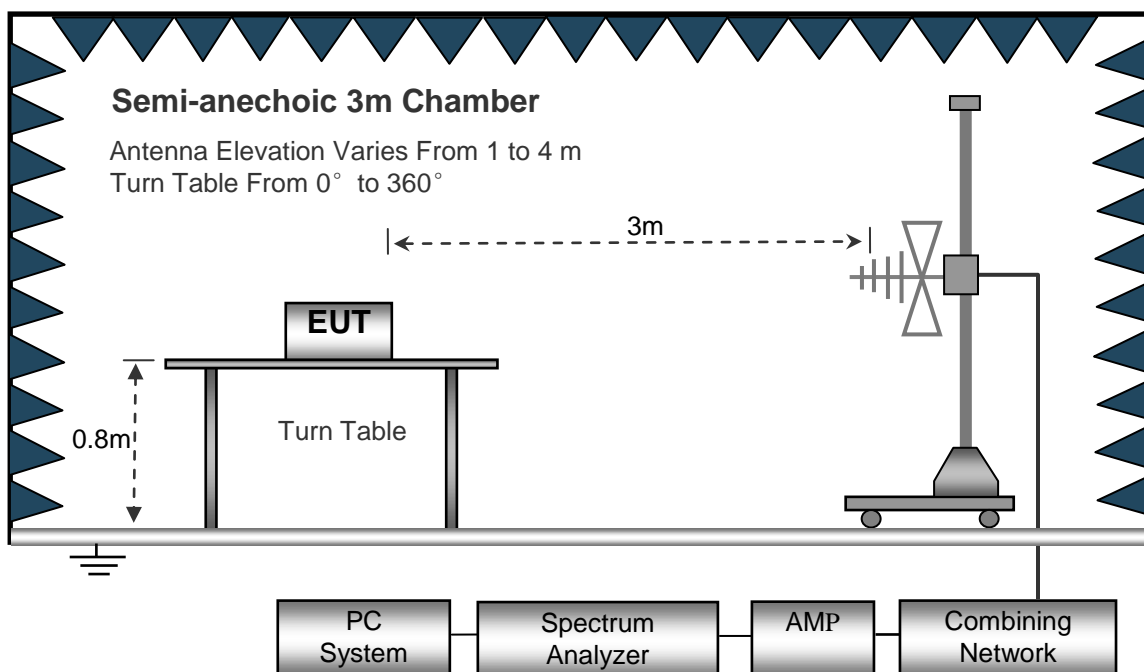
7.2 Test Setup

The radiated emission tests were performed in the 3m Semi- Anechoic Chamber test site, using the setup accordance with the ANSI C63.4: 2003.

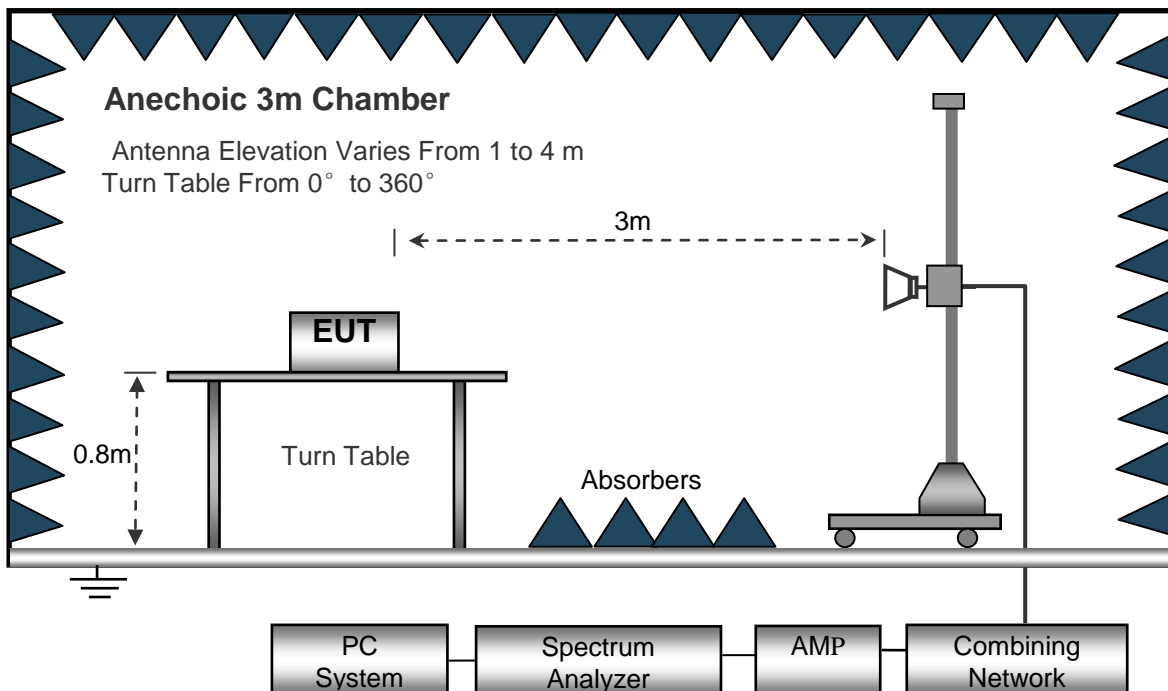
The test setup for emission measurement below 30MHz.



The test setup for emission measurement from 30 MHz to 1 GHz.



The test setup for emission measurement above 1 GHz.



7.3 Spectrum Analyzer Setup

Below 30MHz

Sweep Speed Auto
 IF Bandwidth..... 10kHz
 Video Bandwidth..... 10kHz
 Resolution Bandwidth..... 10kHz

30MHz ~ 1GHz

Sweep Speed Auto
 Detector PK
 Resolution Bandwidth..... 100kHz
 Video Bandwidth..... 300kHz

Above 1GHz

Sweep Speed Auto
 Detector PK
 Resolution Bandwidth..... 1MHz
 Video Bandwidth..... 3MHz
 Detector Ave.
 Resolution Bandwidth..... 1MHz
 Video Bandwidth..... 10Hz

7.4 Test Procedure

1. The EUT is placed on a turntable, which is 0.8m above ground plane.
2. The turntable shall be rotated for 360 degrees to determine the position of maximum emission level.
3. EUT is set 3m away from the receiving antenna, which is moved from 1m to 4m to find out the maximum emissions.
4. Maximum procedure was performed on the six highest emissions to ensure EUT compliance.
5. And also, each emission was to be maximized by changing the polarization of receiving antenna both horizontal and vertical.
6. Repeat above procedures until the measurements for all frequencies are complete.
7. The radiation measurements are performed in X,Y and Z axis positioning(X denotes lying on the table, Y denotes side stand and Z denotes vertical stand),the worst condition was tested putting the eut in X axis,so the worst data were shown as follow.

7.5 Summary of Test Results

Test Frequency: 30MHz ~ 18GHz

Frequency	Receiver Reading	Detector	Turn table Angle	RX Antenna		Corrected Factor	Corrected Amplitude	Limit	Margin
				Height	Polar				
(MHz)	(dB μ V)	(PK/QP/Ave)	Degree	(m)	(H/V)	(dB)	(dB μ V/m)	(dB μ V/m)	(dB)
GFSK Low Channel									
268.35	36.87	QP	47	1.4	H	-13.35	23.52	46.00	-22.48
268.35	41.35	QP	155	1.9	V	-13.35	28.00	46.00	-18.00
4804.00	46.16	PK	302	1.5	V	-1.06	45.10	74.00	-28.90
4804.00	43.53	Ave	302	1.5	V	-1.06	42.47	54.00	-11.53
7206.00	40.62	PK	38	1.9	H	1.33	41.95	74.00	-32.05
7206.00	35.38	Ave	38	1.9	H	1.33	36.71	54.00	-17.29
2341.48	45.94	PK	233	1.5	V	-13.19	32.75	74.00	-41.25
2341.48	39.43	Ave	233	1.5	V	-13.19	26.24	54.00	-27.76
2367.72	42.15	PK	109	1.9	H	-13.14	29.01	74.00	-44.99
2367.72	37.17	Ave	109	1.9	H	-13.14	24.03	54.00	-29.97
2488.65	42.30	PK	340	1.8	V	-13.08	29.22	74.00	-44.78
2488.65	38.43	Ave	340	1.8	V	-13.08	25.35	54.00	-28.65

Frequency	Receiver Reading	Detector	Turn table Angle	RX Antenna		Corrected Factor	Corrected Amplitude	Limit	Margin
				Height	Polar				
(MHz)	(dB μ V)	(PK/QP/Ave)	Degree	(m)	(H/V)	(dB)	(dB μ V/m)	(dB μ V/m)	(dB)
GFSK Middle Channel									
268.35	36.08	QP	182	1.5	H	-13.35	22.73	46.00	-23.27
268.35	39.96	QP	253	1.4	V	-13.35	26.61	46.00	-19.39
4880.00	45.37	PK	133	1.4	V	-0.62	44.75	74.00	-29.25
4880.00	42.08	Ave	133	1.4	V	-0.62	41.46	54.00	-12.54
7320.00	39.65	PK	254	1.5	H	2.21	41.86	74.00	-32.14
7320.00	33.92	Ave	254	1.5	H	2.21	36.13	54.00	-17.87
2342.00	46.62	PK	104	1.0	V	-13.19	33.43	74.00	-40.57
2342.00	37.70	Ave	104	1.0	V	-13.19	24.51	54.00	-29.49
2384.98	43.18	PK	196	1.5	H	-13.14	30.04	74.00	-43.96
2384.98	37.33	Ave	196	1.5	H	-13.14	24.19	54.00	-29.81
2498.40	42.13	PK	139	1.6	V	-13.08	29.05	74.00	-44.95
2498.40	38.97	Ave	139	1.6	V	-13.08	25.89	54.00	-28.11

Frequency	Receiver Reading	Detector	Turn table Angle	RX Antenna		Corrected Factor	Corrected Amplitude	Limit	Margin
				Height	Polar				
(MHz)	(dB μ V)	(PK/QP/Ave)	Degree	(m)	(H/V)	(dB)	(dB μ V/m)	(dB μ V/m)	(dB)
GFSK High Channel									
268.35	36.01	QP	164	1.5	H	-13.35	22.66	46.00	-23.34
268.35	38.83	QP	344	1.7	V	-13.35	25.48	46.00	-20.52
4960.00	46.02	PK	282	1.0	V	-0.24	45.78	74.00	-28.22
4960.00	41.32	Ave	282	1.0	V	-0.24	41.08	54.00	-12.92
7440.00	40.83	PK	334	1.1	H	2.84	43.67	74.00	-30.33
7440.00	34.71	Ave	334	1.1	H	2.84	37.55	54.00	-16.45
2335.78	45.35	PK	307	1.7	V	-13.19	32.16	74.00	-41.84
2335.78	37.91	Ave	307	1.7	V	-13.19	24.72	54.00	-29.28
2371.48	42.80	PK	40	1.9	H	-13.14	29.66	74.00	-44.34
2371.48	38.55	Ave	40	1.9	H	-13.14	25.41	54.00	-28.59
2488.39	44.72	PK	25	1.6	V	-13.08	31.64	74.00	-42.36
2488.39	38.94	Ave	25	1.6	V	-13.08	25.86	54.00	-28.14

Test Frequency: 18GHz~25GHz

The measurements were more than 20 dB below the limit and not reported.

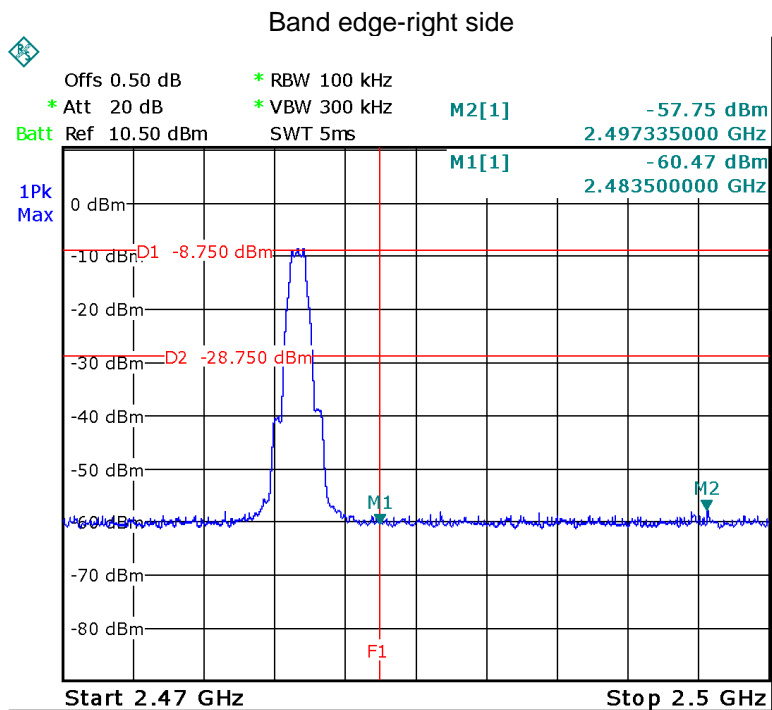
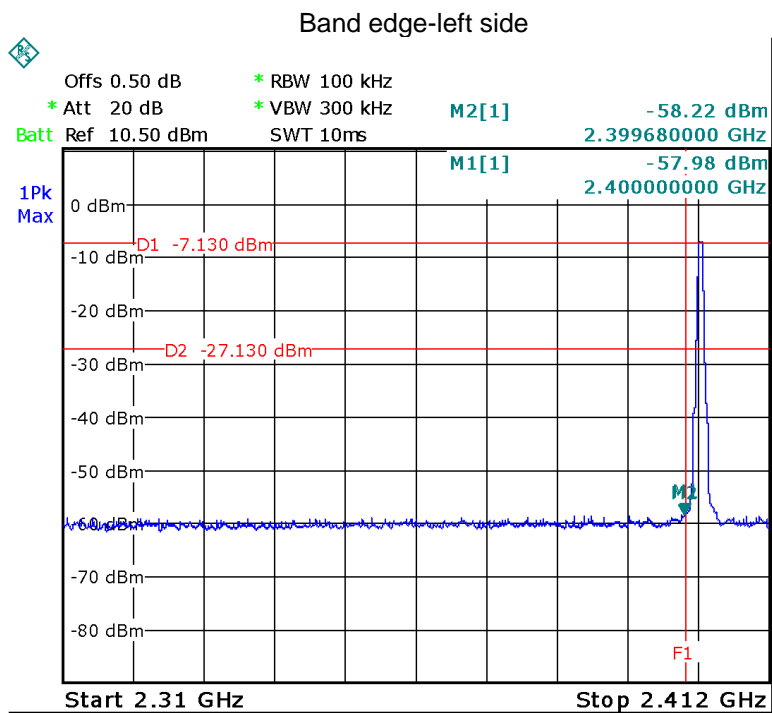
8 Band Edge Measurement

Test Requirement:	Section 15.247(d) In addition, radiated emissions which fall in the restricted bands. as defined in Section 15.205(a), must also comply with the radiated emission limits specified in Section 15.209(a) and 15.205(c).
Test Method:	KDB558074 D01 DTS Meas Guidance v03r03
Test Limit:	Regulation 15.247 (d),In any 100 kHz bandwidth outside the frequency band in which the spread spectrum or digitally modulated intentional radiator is operating, the radio frequency power that is produced by the intentional radiator shall be at least 20 dB below that in the 100 kHz bandwidth within the band that contains the highest level of the desired power, based on either an RF conducted or a radiated measurement, provided the transmitter demonstrates compliance with the peak conducted power limits. If the transmitter complies with the conducted power limits based on the use of RMS averaging over a time interval, as permitted under paragraph (b)(3) of this section, the attenuation required under this paragraph shall be 30 dB instead of 20 dB. Attenuation below the general limits specified in §15.209(a) is not required. In addition, radiated emissions which fall in the restricted bands, as defined in §15.205(a), must also comply with the radiated emission limits specified in §15.209(a) (see §15.205(c)).
Test Mode:	Transmitting

8.1 Test Produce

1. Check the calibration of the measuring instrument using either an internal calibrator or a known signal from an external generator.
2. Position the EUT without connection to measurement instrument. Turn on the EUT and connect its antenna terminal to measurement instrument via a low loss cable. Then set it to any one measured frequency within its operating range, and make sure the instrument is operated in its linear range.
3. Set the spectrum analyzer: RBW = 100kHz, VBW = 300kHz, Sweep = auto
Detector function = peak, Trace = max hold
4. Measure the highest amplitude appearing on spectral display and set it as a reference level. Plot the graph with marking the highest point and edge frequency.
5. Repeat above procedures until all measured frequencies were complete.

8.2 Test Result



9 6 dB Bandwidth Measurement

Test Requirement:

FCC CFR47 Part 15 Section 15.247

Test Method:

KDB558074 D01 DTS Meas Guidance v03r03

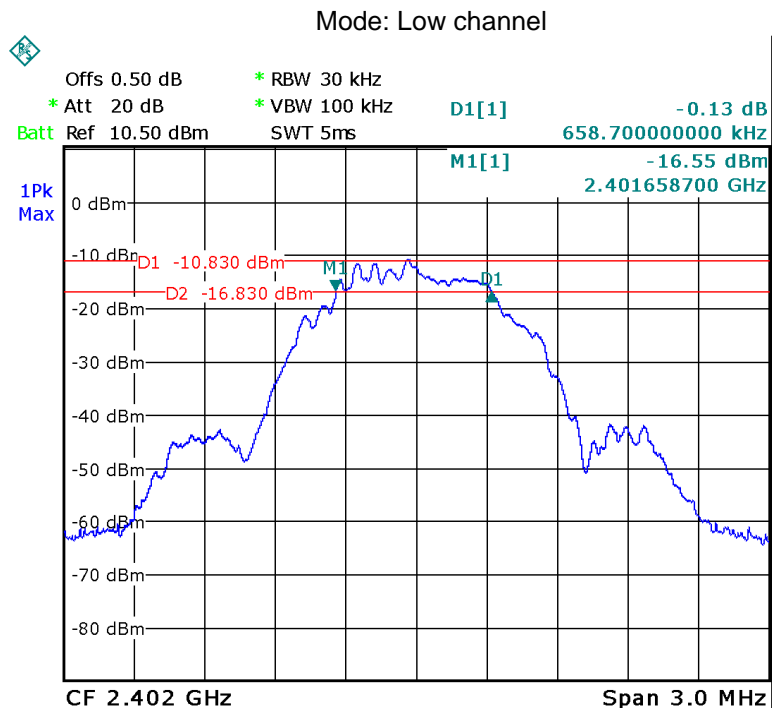
9.1 Test Procedure

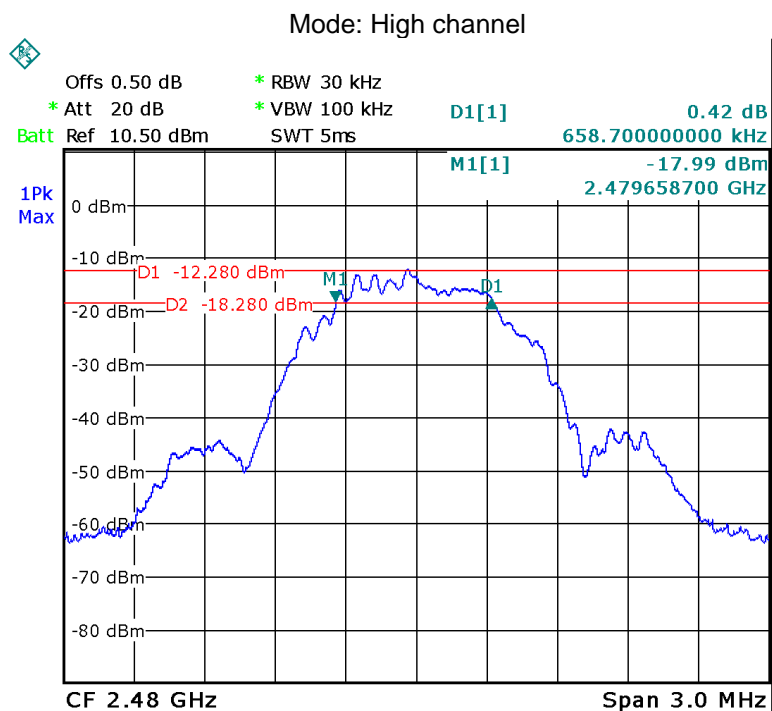
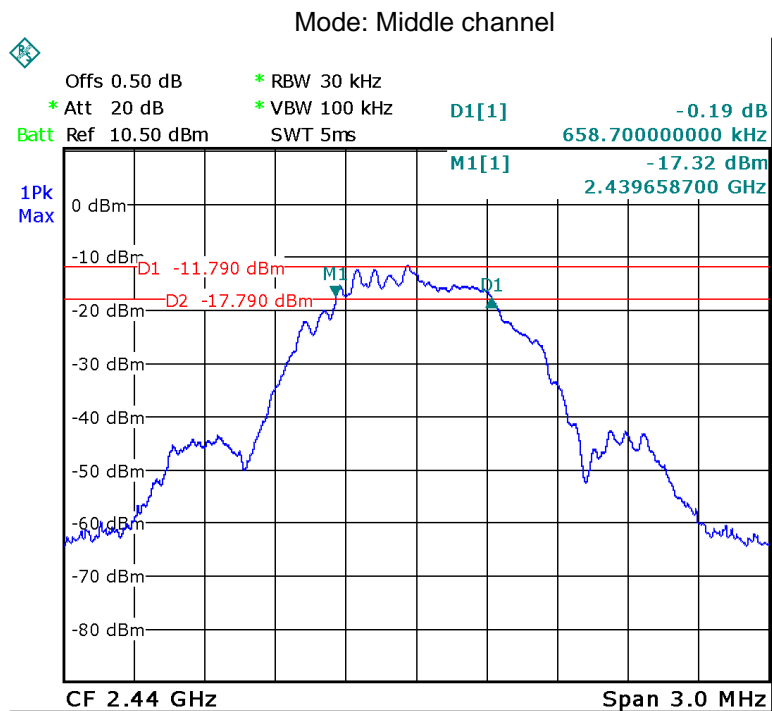
1. Remove the antenna from the EUT and then connect a low RF cable from the antenna port to the spectrum;
2. Set the spectrum analyzer: RBW = 30kHz, VBW =100kHz

9.2 Test Result

Operation mode	Bandwidth (MHz)
Low channel	0.659
Middle channel	0.659
High channel	0.659

Test result plot as follows:





10 Maximum Peak Output Power

Test Requirement:

FCC CFR47 Part 15 Section 15.247

Test Method:

KDB558074 D01 DTS Meas Guidance v03r03

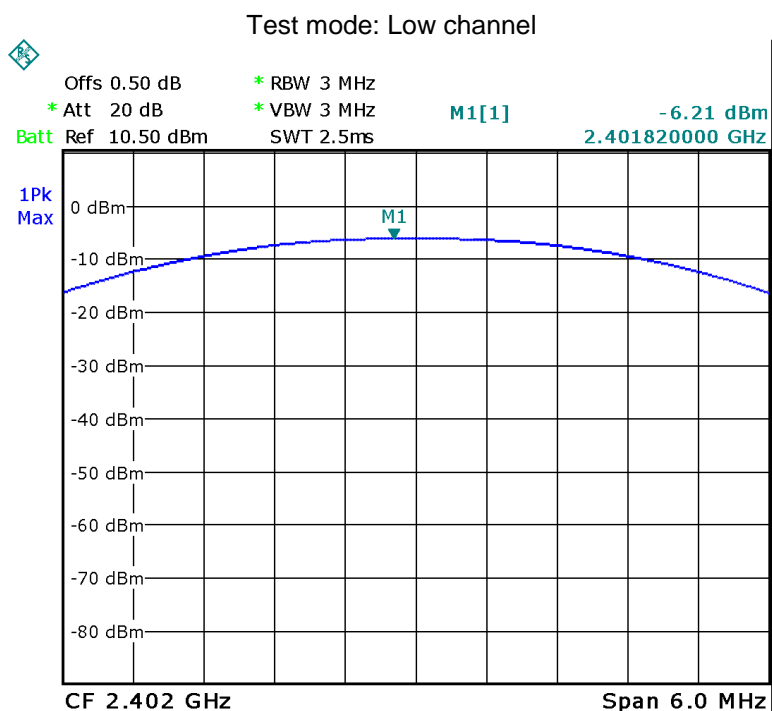
10.1 Test Procedure

KDB558074 D01 DTS Meas Guidance v03r03 section 8.1.2 Option 2

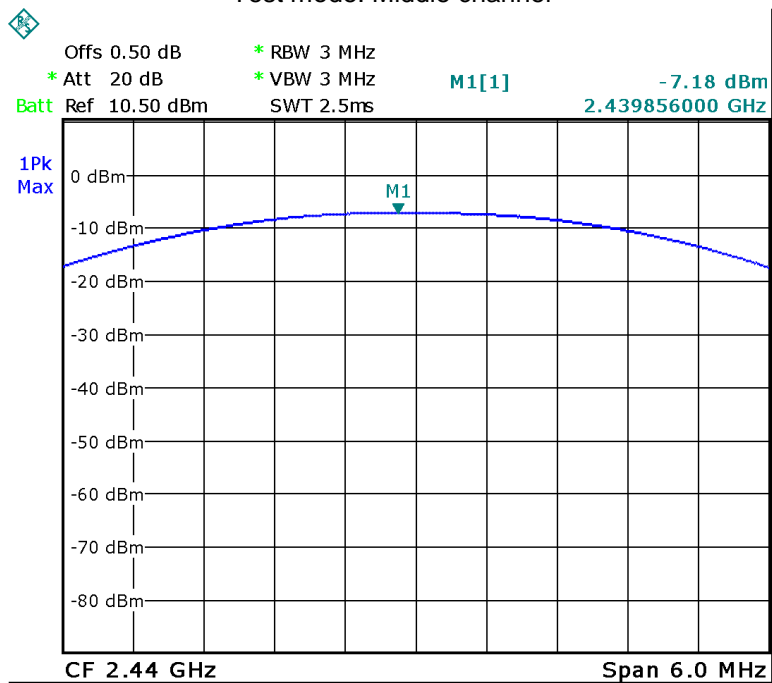
1. Remove the antenna from the EUT and then connect a low RF cable from the antenna port to the spectrum.
2. Set the spectrum analyzer: RBW = 3MHz. VBW = 3MHz. Sweep = auto; Detector Function = Peak, Set the span to fully encompass the DTS bandwidth.
3. Keep the EUT in transmitting at lowest, medium and highest channel individually. Record the max value.

10.2 Test Result

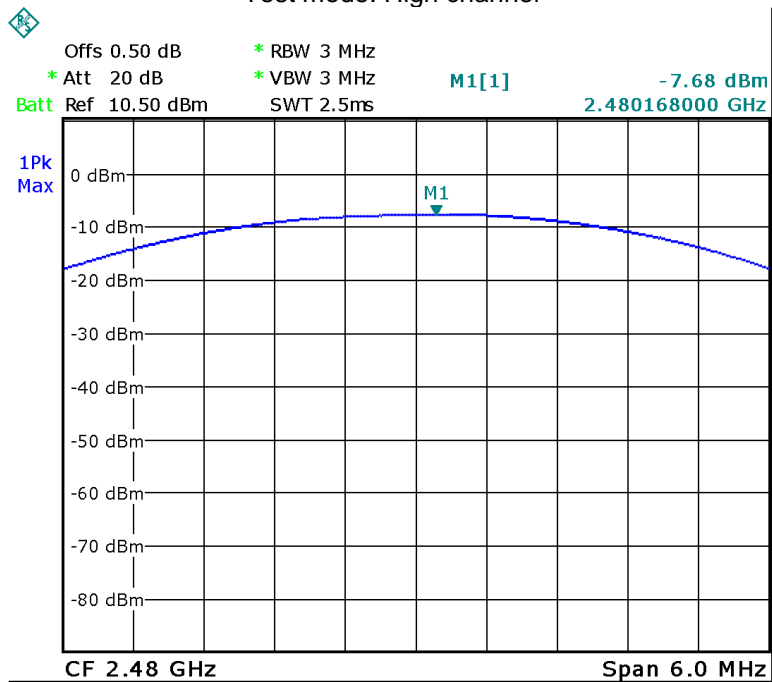
Test Mode	Data Rate	Peak Power(dBm)		
		CH00	CH19	CH39
GFSK BLE	1Mbps	-6.21	-7.18	-7.68



Test mode: Middle channel



Test mode: High channel



11 Power Spectral density

Test Requirement:

FCC CFR47 Part 15 Section 15.247

Test Method:

KDB558074 D01 DTS Meas Guidance v03r03

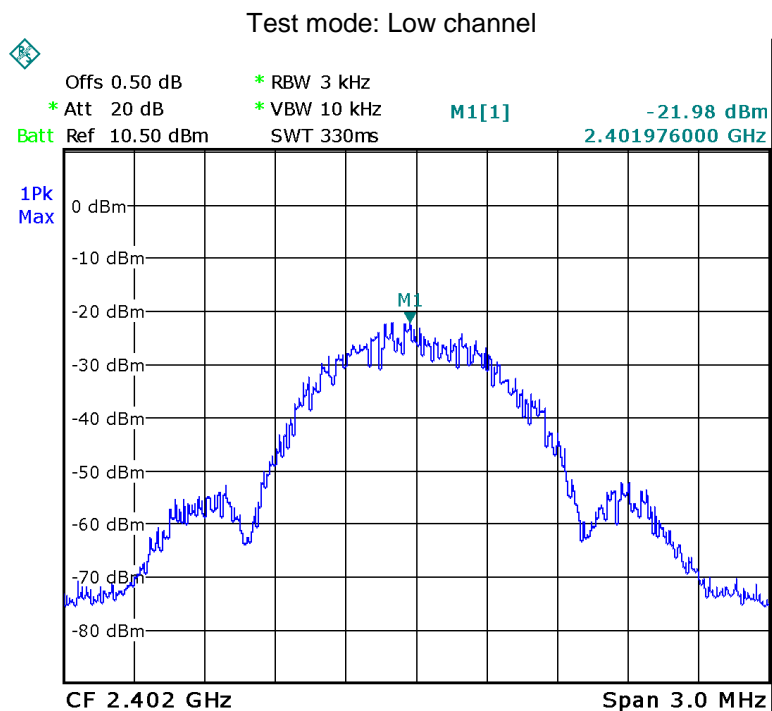
11.1 Test Procedure

KDB558074 D01 DTS Meas Guidance v03r03 section 9.1 Option 1

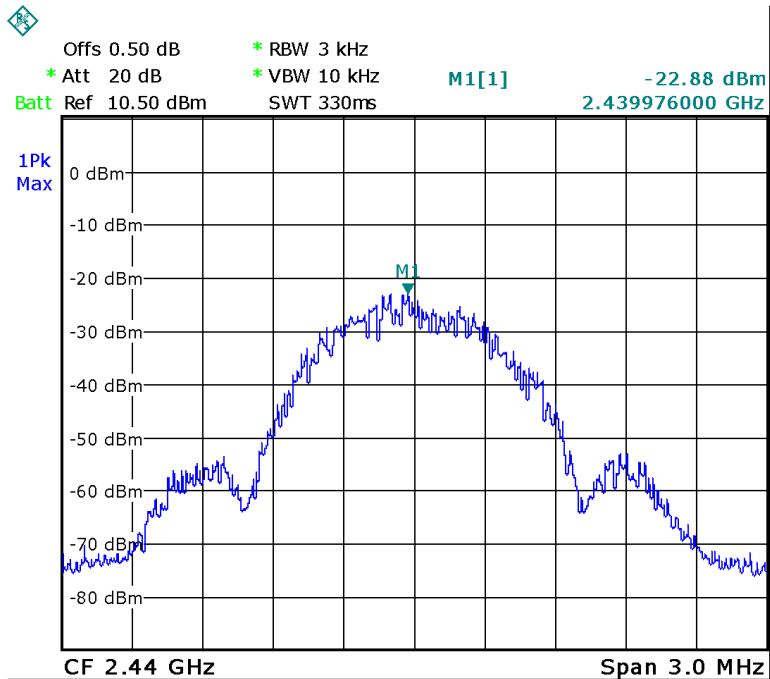
1. Remove the antenna from the EUT and then connect a low RF cable from the antenna port to the spectrum.
2. Set the spectrum analyzer: RBW = 3kHz. VBW = 10kHz , Span = 1.5 times the DTS channel bandwidth(6 dB bandwidth). Sweep = auto; Detector Function = Peak. Trace = Max hold.
3. Allow the trace to stabilize. Use the marker-delta function to determine the separation between the peaks of the adjacent channels. The limit is specified in one of the subparagraphs of this Section
Submit this plot.

11.2 Test Result

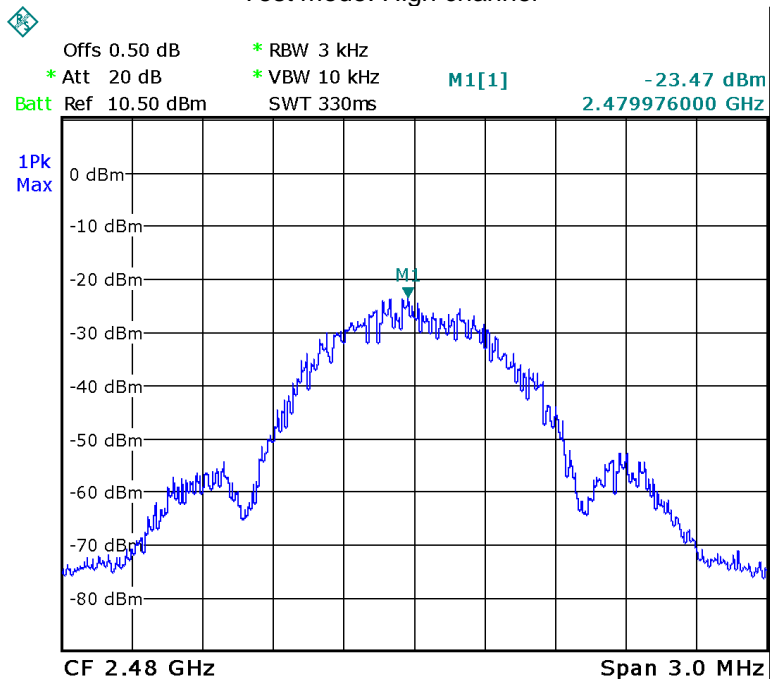
Power Spectral Density		
Low channel	Middle channel	High channel
-21.98	-22.88	-23.47
Limit		
8dBm per 3kHz		



Test mode: Middle channel



Test mode: High channel



12 Antenna Requirement

According to the FCC Part 15 Paragraph 15.203, an intentional radiator shall be designed to ensure that no antenna other than that furnished by the responsible party shall be used with the device. This product has a PCB printed antenna, fulfill the requirement of this section.

13 RF Exposure

Test Requirement: FCC Part 1.1307

Test Mode: The EUT work in test mode(Tx).

13.1 Requirements

Systems operating under the provisions of this section shall be operated in a manner that ensures that the public is not exposed to radio frequency energy levels in excess limit for maximum permissible exposure. In accordance with 47 CFR FCC Part 2 Subpart J, section 2.1091 this device has been defined as a mobile device whereby a distance of 0.2 m normally can be maintained between the user and the device.

13.2 The procedures / limit

(A) Limits for Occupational / Controlled Exposure

Frequency Range (MHz)	Electric Field Strength (E) (V/m)	Magnetic Field Strength (H) (A/m)	Power Density (S) (mW/ cm ²)	Averaging Time E ² , H ² or S (minutes)
0.3-3.0	614	1.63	(100)*	6
3.0-30	1842 / f	4.89 / f	(900 / f)*	6
30-300	61.4	0.163	1.0	6
300-1500			F/300	6
1500-100,000			5	6

(B) Limits for General Population / Uncontrolled Exposure

Frequency Range (MHz)	Electric Field Strength (E) (V/m)	Magnetic Field Strength (H) (A/m)	Power Density (S) (mW/ cm ²)	Averaging Time E ² , H ² or S (minutes)
0.3-1.34	614	1.63	(100)*	30
1.34-30	824/f	2.19/f	(180/f)*	30
30-300	27.5	0.073	0.2	30
300-1500			F/1500	30
1500-100,000			1.0	30

Note: f = frequency in MHz ; *Plane-wave equivalent power density

13.3 MPE Calculation Method

$$E \text{ (V/m)} = \frac{\sqrt{30 \times P \times G}}{d} \quad \text{Power Density: } Pd \text{ (W/m}^2\text{)} = \frac{E^2}{377}$$

E = Electric field (V/m)

P = Peak RF output power (W)

G = EUT Antenna numeric gain (numeric)

d = Separation distance between radiator and human body (m)

The formula can be changed to

$$Pd = \frac{30 \times P \times G}{377 \times d^2}$$

From the peak EUT RF output power, the minimum mobile separation distance, d=0.2m, as well as the gain of the used antenna, the RF power density can be obtained

Antenna Gain (numeric)	Max.Peak Output Power (dBm)	Peak Output Power (mW)	Power Density (mW/cm ²)	Limit of Power Density (mW/cm ²)
1.585	-6.21	0.24	0.000075	1

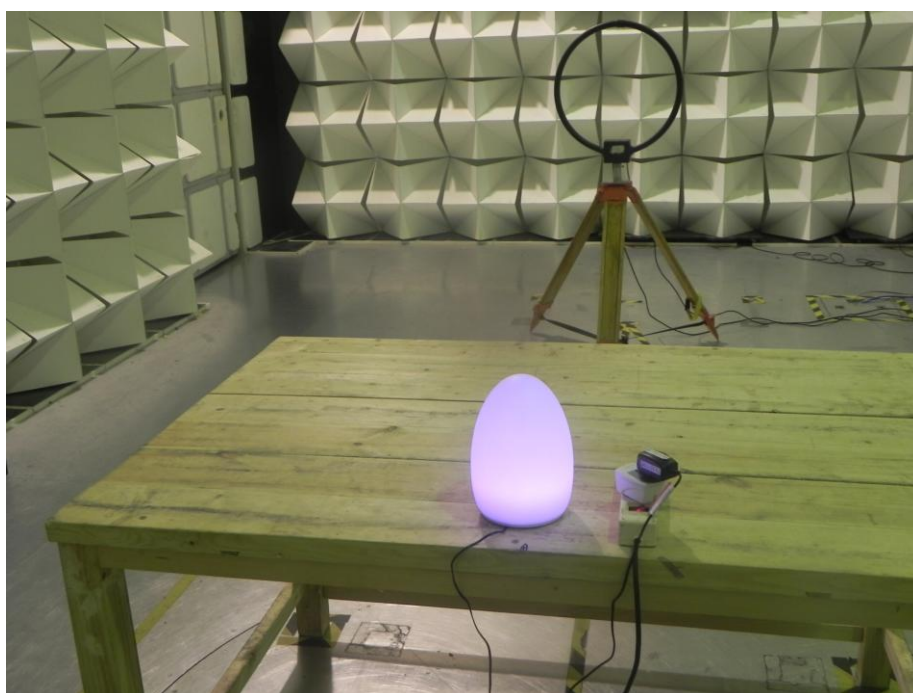
14 Photographs – Model 2AF309901002 Test Setup

14.1 Photograph – Conducted Emission Test Setup at Test Site 1#

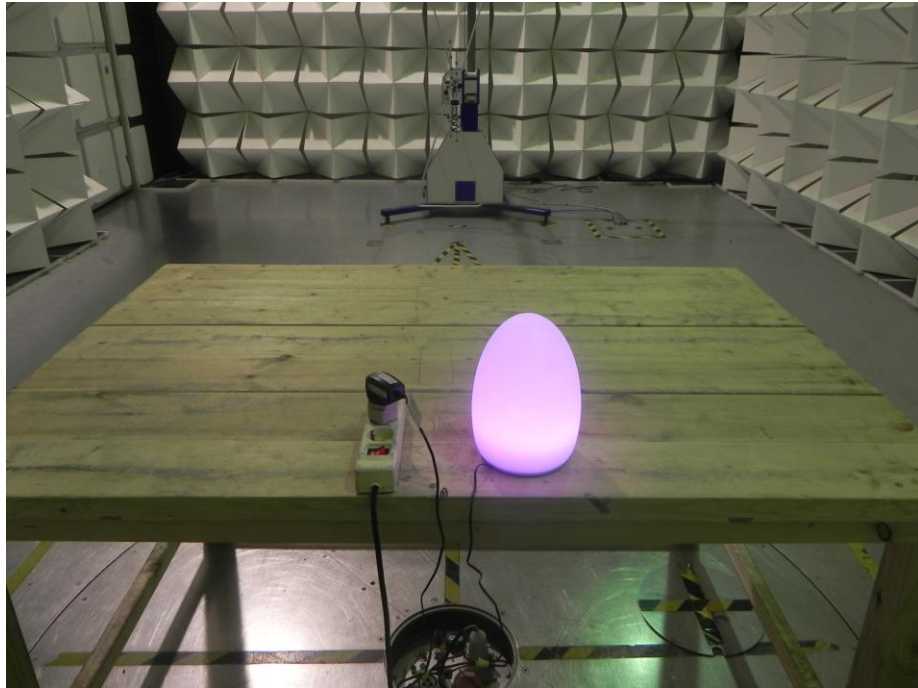


14.2 Radiated Emission

Test frequency below 30MHz at test site 2#



Test frequency from 30MHz to 1GHz at test site 2#



Test frequency above 1GHz at test site 1#

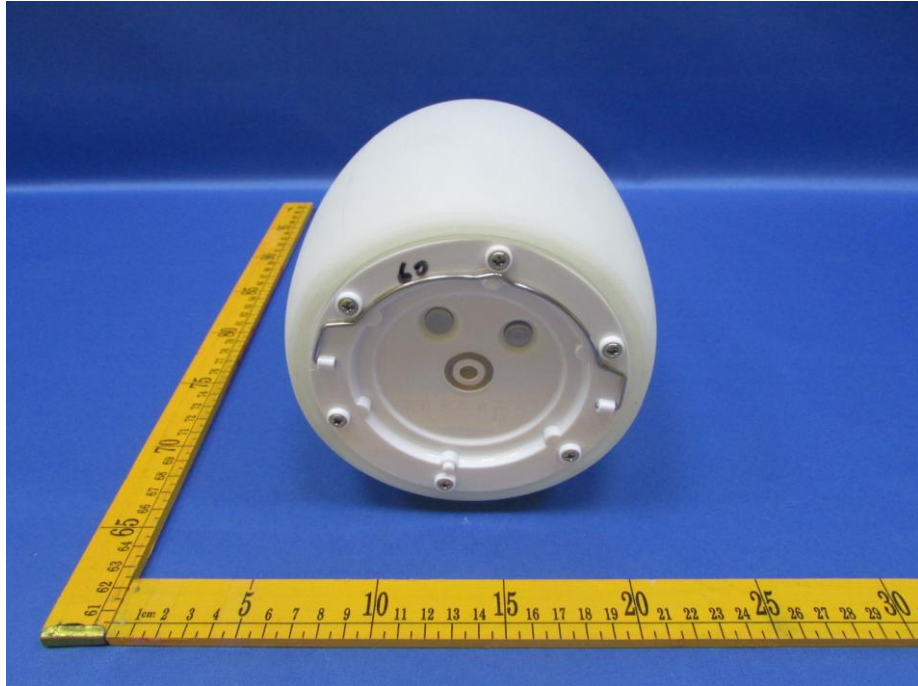


15 Photographs - Constructional Details

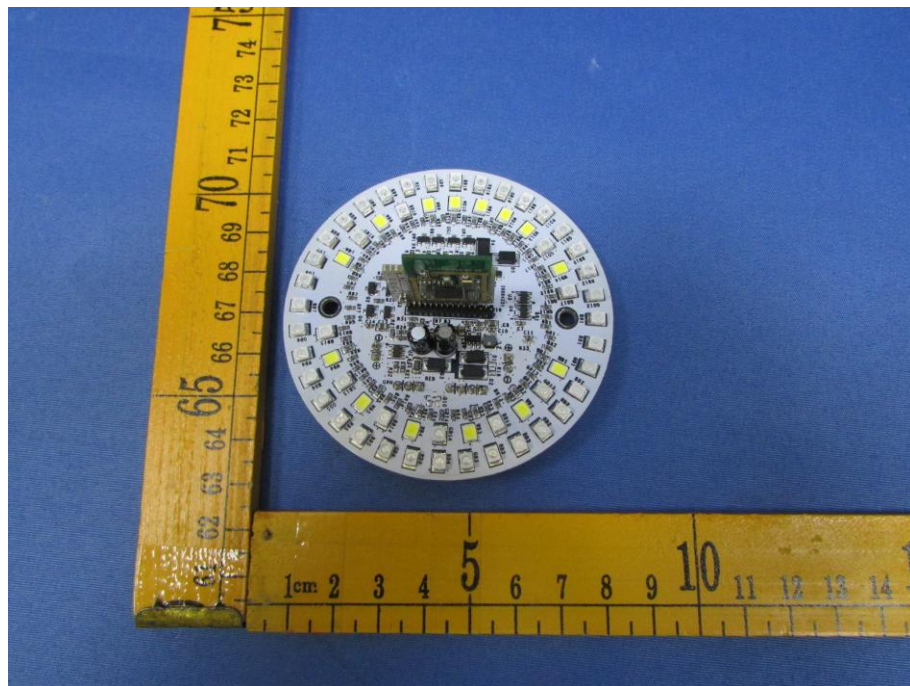
15.1 Model 2AF309901002 – External View

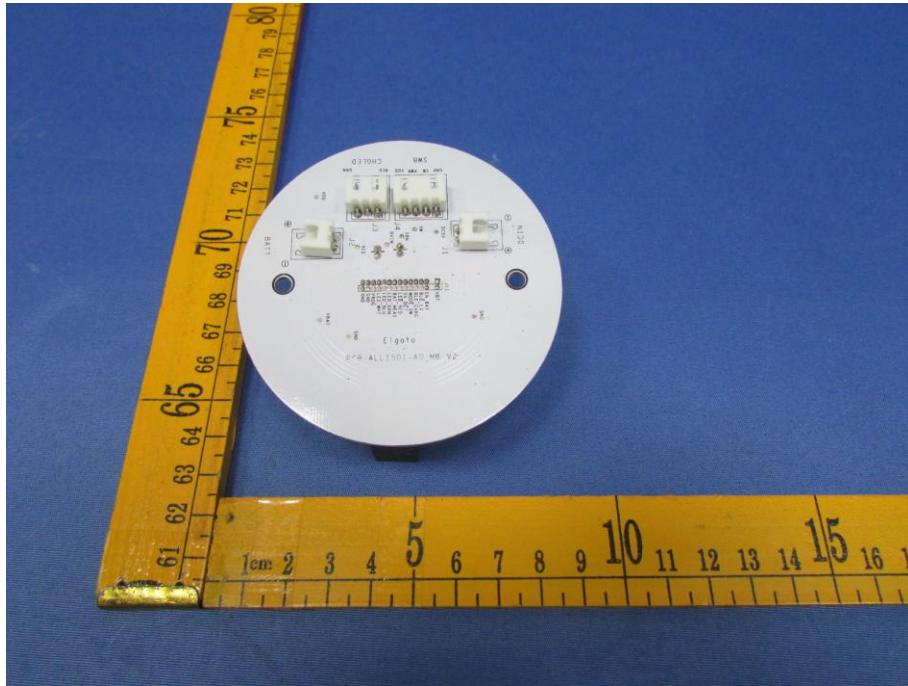


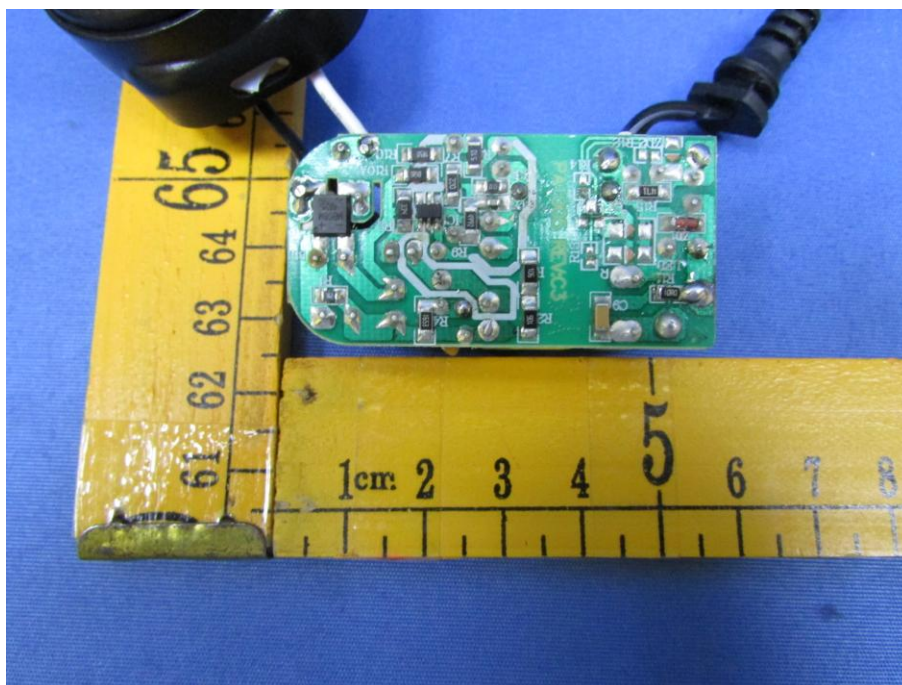
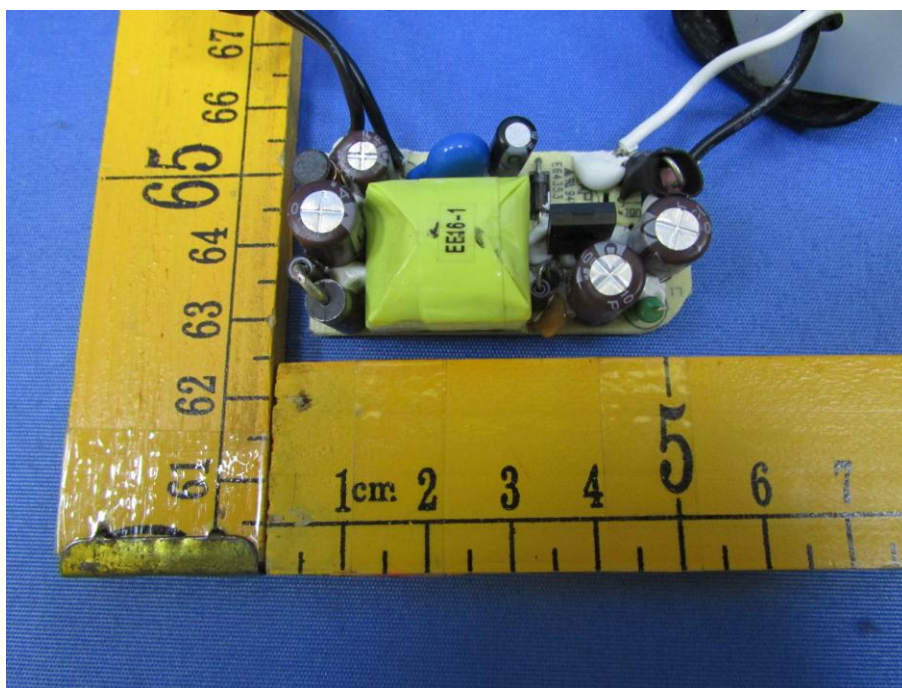


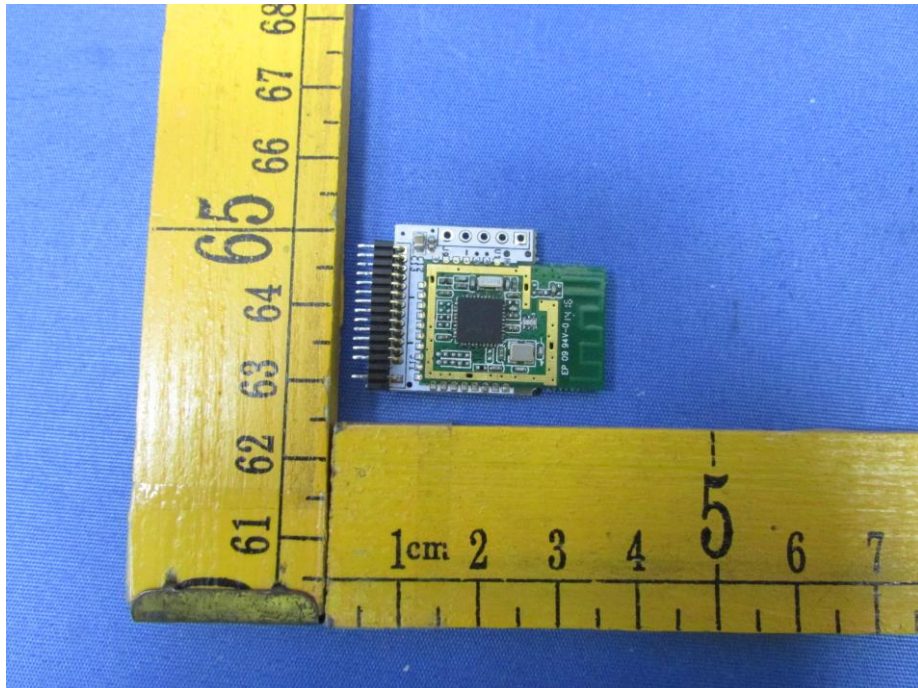
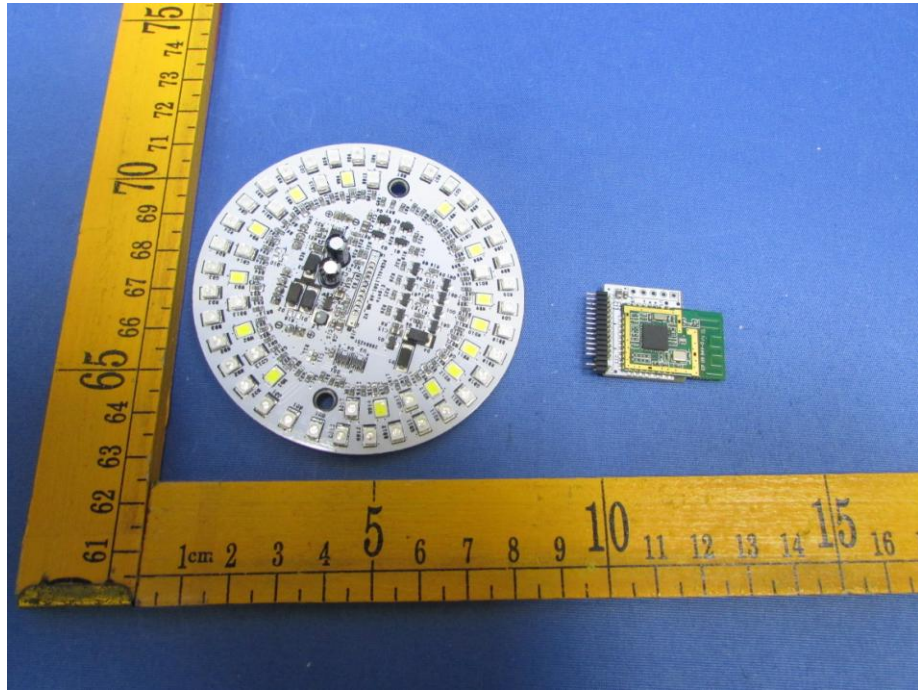


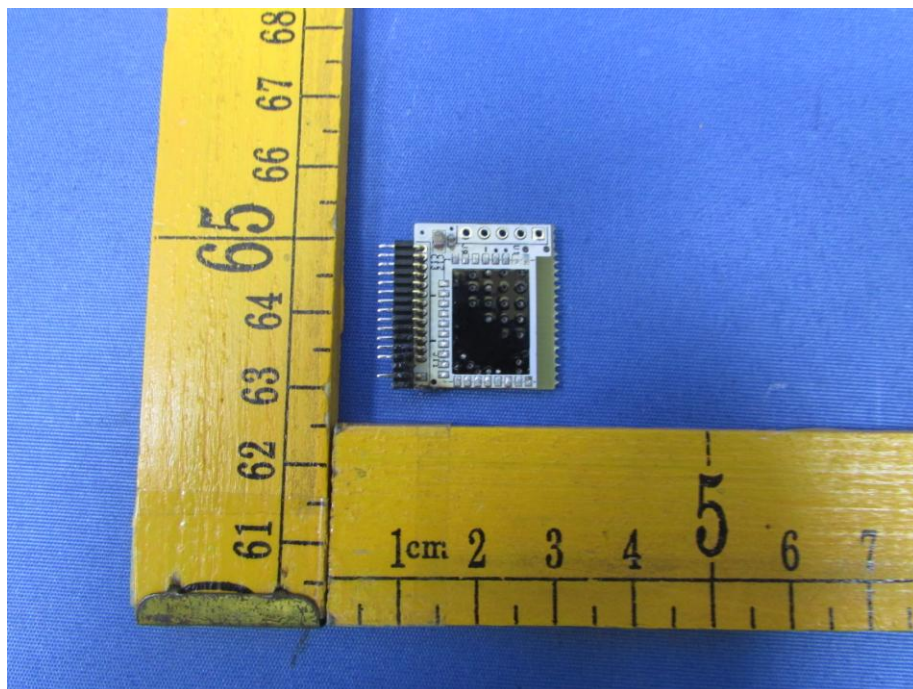
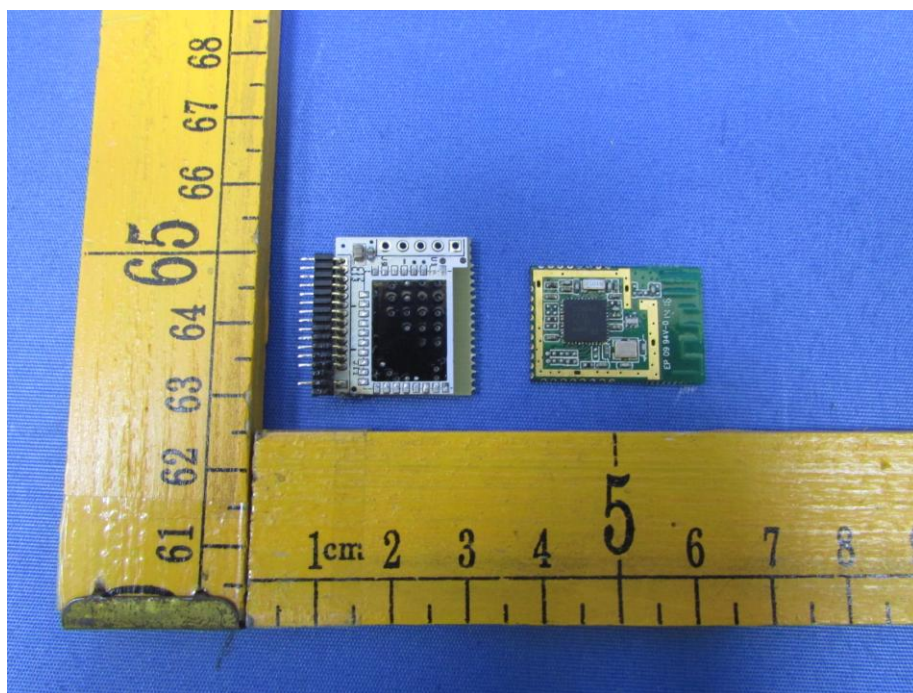
15.2 Model 2AF309901002 - Internal View

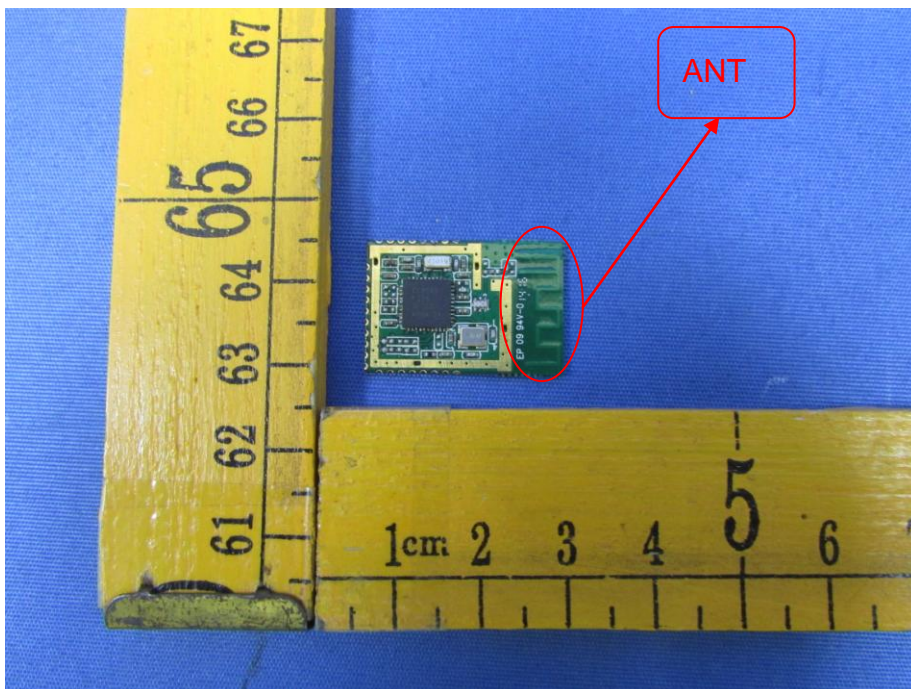
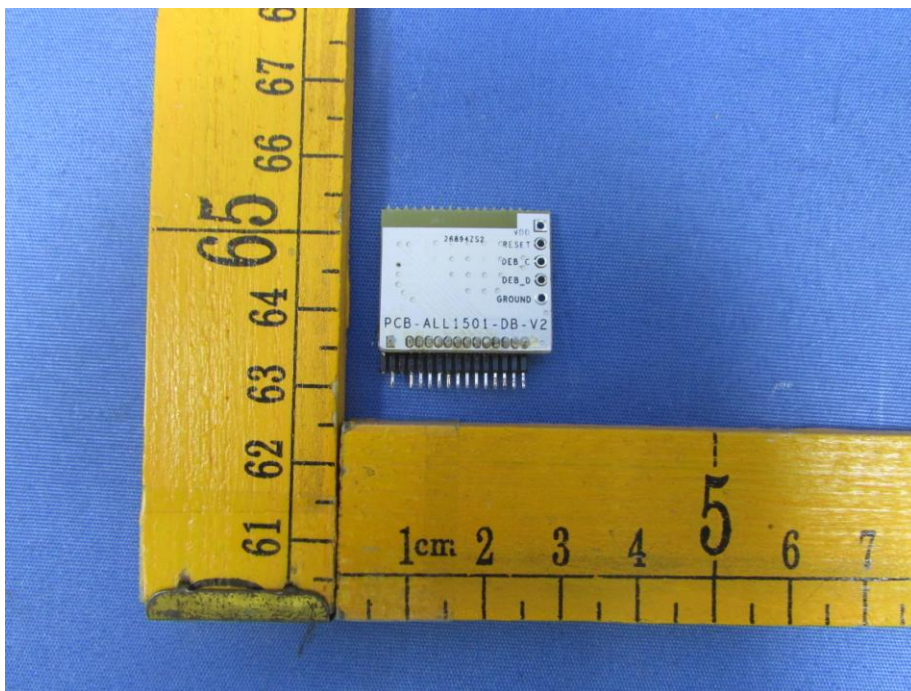


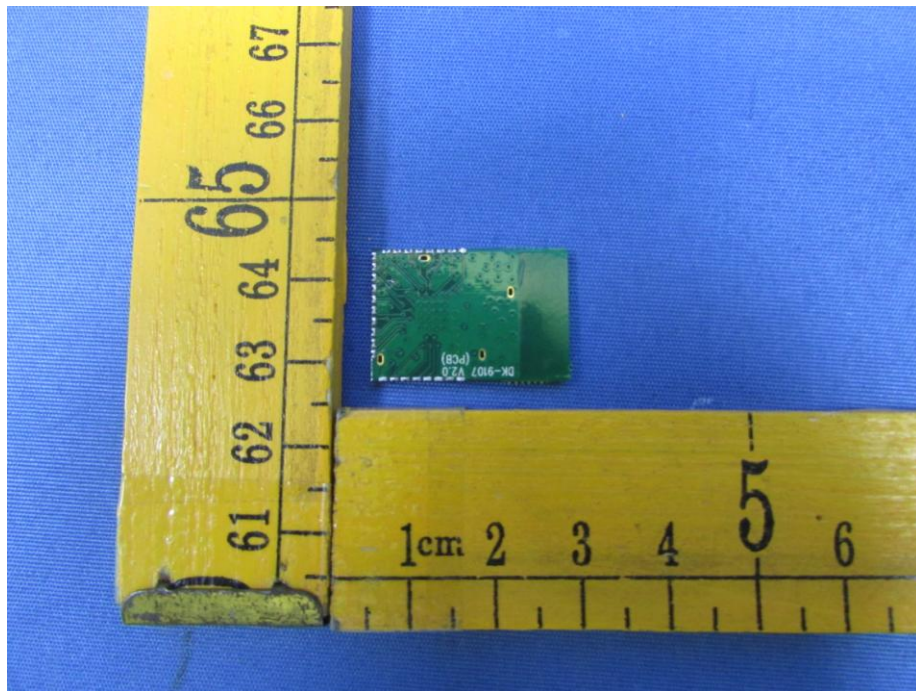


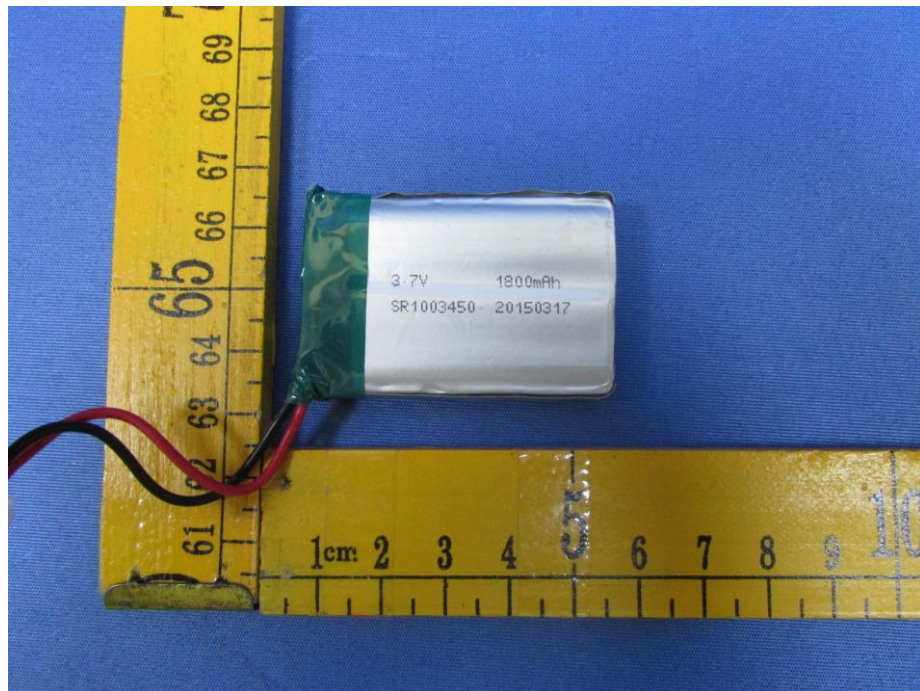












=====-End of Report=-====