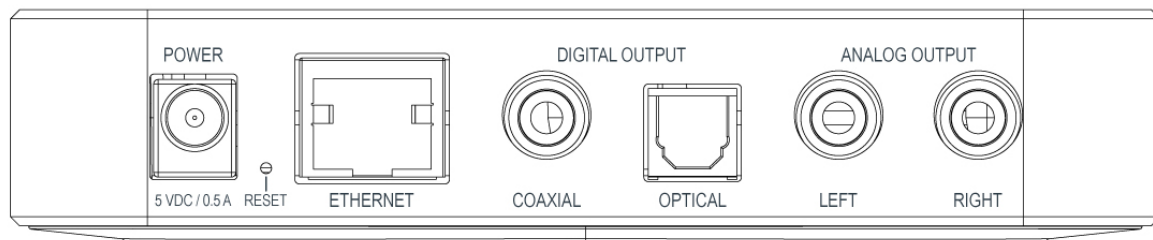


eve.

Eve Play – Quick Guide



Connections



POWER – Input for power supply (5 VDC / 0.5 A)

RESET – Press with a paper clip 10 seconds to reset the device

ETHERNET – Connect the device to a local network

DIGITAL OUTPUT

COAXIAL – connect Eve Play here with the electrical input of your audio system (RCA)

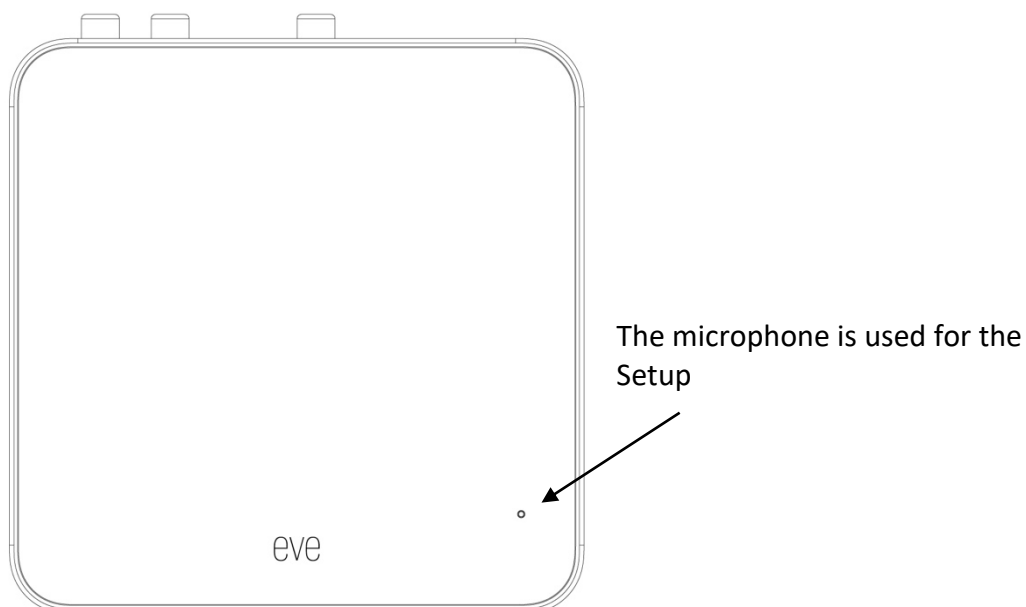
OPTICAL – connect Eve Play here with the optical input of your audio system (TOS-Link)

ANALOG OUTPUT

LEFT – connect Eve Play here with the left channel input of your audio system (RCA)

RIGHT – connect Eve Play here with the right channel input of your audio system (RCA)

Microphone input



Setup

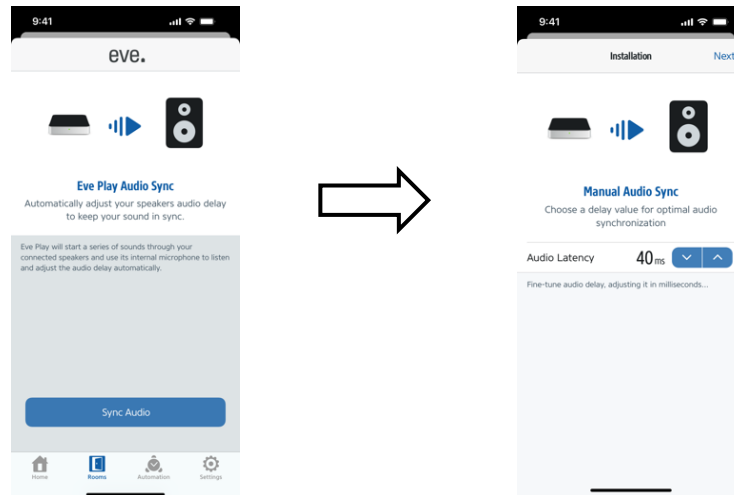
1. Connect Eve Play with the included power supply.



2. Connect Eve Play to your audio equipment using the included RCA cable



3. Open the Apple Home App. Apple Home App will now guide through the setup process.
4. If you want to use multi room, the latency compensation ensures that all devices play the music simultaneously. Go to settings and tap Sync Audio.
If necessary, you can adjust it manually after the automated Audio Sync.



Legal Information

Federal Communication Commission Interference Statement

This equipment has been tested and found to comply with the limits for a Class B digital device, pursuant to Part 15 of the FCC Rules. These limits are designed to provide reasonable protection against harmful interference in a residential installation.

This equipment generates, uses and can radiate radio frequency energy and, if not installed and used in accordance with the instructions, may cause harmful interference to radio communications. However, there is no guarantee that interference will not occur in a particular installation. If this equipment does cause harmful interference to radio or television reception, which can be determined by turning the equipment off and on, the user is encouraged to try to correct the interference by one of the following measures:

- . Reorient or relocate the receiving antenna.
- . Increase the separation between the equipment and receiver.
- . Connect the equipment into an outlet on a circuit different from that to which the receiver is connected.
- . Consult the dealer or an experienced radio/TV technician for help.

FCC Caution

To assure continued compliance, any changes or modifications not expressly approved by the party responsible for compliance could void the user's authority to operate this equipment. (Example - use only shielded interface cables when connecting to computer or peripheral devices).

This transmitter must not be co-located or operating in conjunction with any other antenna or transmitter.

This device complies with Part 15 of the FCC Rules. Operation is subject to the following two conditions:

- (1) This device may not cause harmful interference, and (2) This device must accept any interference received, including interference that may cause undesired operation.

Radiation Exposure Statement

This equipment complies with FCC RF radiation exposure limits set forth for an uncontrolled environment. This equipment should be installed and operated with a minimum distance of 20 centimeters between the radiator and your body.

Cet équipement est conforme aux limites d'exposition aux rayonnements ISED établies pour un environnement non contrôlé. Cet équipement doit être installé et utilisé avec une distance minimale de 20 cm entre le radiateur et un corps humain."

This device complies with Industry Canada license-exempt RSS standard(s).

Operation is subject to the following two conditions: (1) this device may not cause interference, and (2) this device must accept any interference, including interference that may cause undesired operation of the device.

L'émetteur exempt de licence contenu dans le présent appareil est conforme aux CNR d'Innovation, Sciences et Développement économique Canada applicables aux appareils radio exempts de licence. L'exploitation est autorisée aux deux conditions suivantes :

- (1) L'appareil ne doit pas produire de brouillage;
- (2) L'appareil doit accepter tout brouillage radioélectrique subi, même si le brouillage est susceptible d'en compromettre le fonctionnement.


5150-5250MHz for Indoor use only. 5150-5250MHz pour une utilisation en intérieur uniquement.

Frequency range:

	FCC	IC	CE
Wi-Fi 2.4 GHz	2412 – 2462 MHz	2412 – 2462 MHz	2412 – 2472 MHz
Wi-Fi 5 GHz (Band 1 & 2)	5180 – 5320 MHz	5180 – 5320 MHz	5180 – 5320 MHz
Wi-Fi 5 GHz (Band 3)	5500 – 5700 MHz	5500 – 5580 MHz 5660 – 5700 MHz	5500 – 5700 MHz
Wi-Fi 5 GHz (Band 4)	5725 – 5850 MHz	5725 – 5850 MHz	N/A

EU: max. EIRP: 20 dBm (2.4 GHz) / 23 dBm (5 GHz)

Warning



AT	BE	BG	CZ	DK
EE	FR	DE	IS	IE
IT	EL	ES	CY	LV
LI	LT	LU	HU	MT
NL	NO	PL	PT	RO
SI	SK	TR	FI	SE
CH	UK(NI)	HR		

Indoor use only for WLAN 5150-5350MHz.

For questions about compliance with FCC regulations, please contact: Compliance Officer, Eve Systems, 100 Pine St., Suite 1250, San Francisco CA 94111, USA • UK Authorised Representative: Authorised Representative Service, The Old Methodist Chapel, Great Hucklow, SK17 8RG, UK

Hereby, Eve Systems declares that this device is in compliance with the essential requirements and other relevant provisions of Directive 2014/53/EC. The declaration of conformity is available at www.evehome.com/doc

Product: 10EBR8701 • Model: 20EBR8701 • Part: 51EBR8701

FCC ID: SNE-EAP-001 • IC: 11192A-EAP001

Eve Systems GmbH, Rotkreuzplatz 1, 80634 Munich, Germany

Operating time: continuous; temperature range: 0 °C - 45 °C;