

# Quick-Start Guide



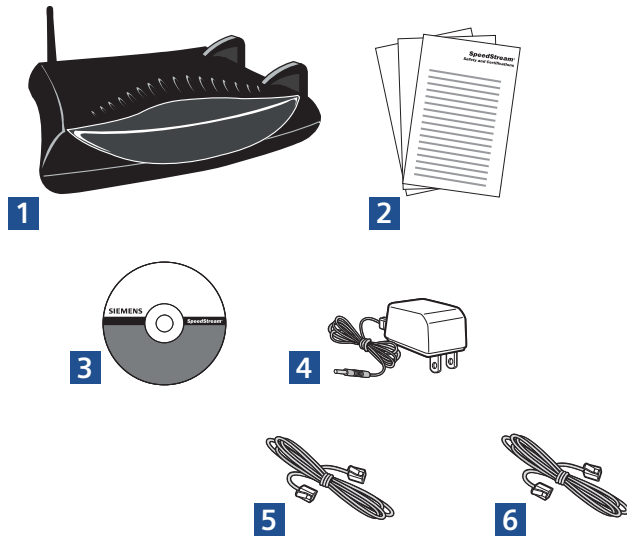
## SpeedStream® 6500 Residential Gateway

**SIEMENS**

Global network of innovation

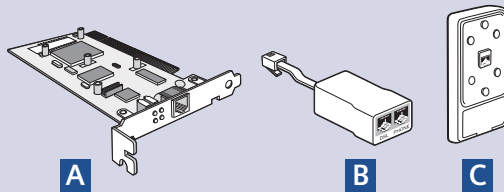
# Before you begin,

Verify that the following items came with your DSL kit:



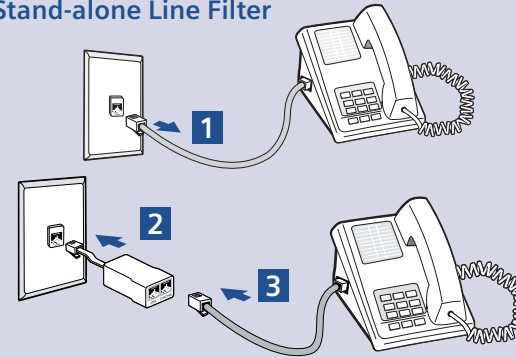
Your service provider may include a wall-mount filter, line filter(s), and an Ethernet adapter in your DSL kit. If you received any of these items, follow the instructions provided in this guide for basic installation. If you need further assistance installing these items, please contact your service provider.

- A PCI Ethernet adapter
- B Line filter(s)
- C Wall-mount filter

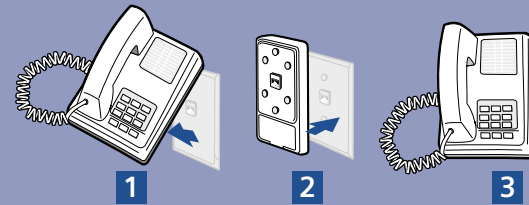


# Step 1 > Install Line Filters

## Stand-alone Line Filter



## Wall-mount Filter



Devices such as fax machines, caller ID boxes, or phones that share the same phone line as your DSL account require a line filter, which prevents noise from disrupting the DSL signal on the phone line. Filters can be in the form of a stand-alone line filter or a wall-mount filter.

### Stand-alone Line Filter

For each device that shares the DSL phone line:

1. Unplug the device's cord from the phone jack.
2. Plug the filter into the phone jack.
3. Plug the phone cord (or other device cord) into the filter.

### Wall-mount Filter

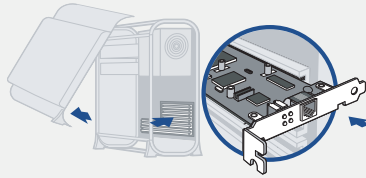
For a wall-mount phone, install a wall-mount filter.

1. Remove the phone.
2. Connect the wall-mount filter to the wall plate.
3. Reconnect the phone.

# Step 2 > Ethernet Installation

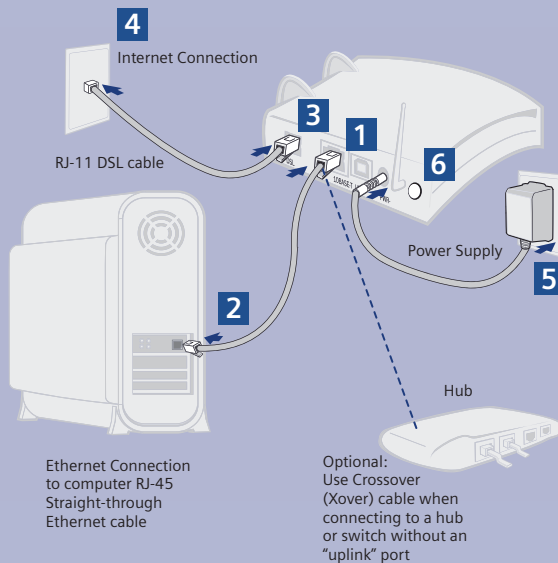
## Install Ethernet Adapter

You will need to install an Ethernet adapter if your computer does not already have one installed. Refer to your Ethernet adapter manufacturer's documentation for complete installation instructions.



## Connect the SpeedStream® Gateway

1. Connect the straight-through Ethernet cable (RJ-45) to the Ethernet port on the gateway (yellow port).
2. Connect the other end of the straight-through Ethernet cable (RJ-45) to the Ethernet port on your computer.
3. Plug the DSL cable (RJ-11) into the DSL port on the gateway (gray port).
4. Plug the other end of the DSL cable (RJ-11) into the phone jack.
5. Plug the power adapter into the power outlet and gateway (black port).
6. Ensure gateway is powered on (power switch located on right side of back panel).



# Step 3 > Configure the Gateway

If your PC has not been connected to a broadband modem or other network device, you will need to perform the PC configuration procedure below. Remember to restart each PC when finished. If your PC has been connected to a broadband modem or other network device, continue to the "Using the Wireless Connection" section below.

1. Start your Web browser. In the Address box, enter the following: <http://speedstream>.
2. Press Enter. The **SpeedStream Simple Setup Wizard** will launch.
3. When prompted, enter the Internet connection information provided by your Internet Service Provider.
4. At the end of the Setup Wizard, you will be given the option to either connect to the Internet or further configure the optional settings of the gateway.
5. If additional configuration is desired, select the icon for the service or option you wish to configure: the gateway's firewall and security settings, User Profiles and content filtering, or home network options.

For non-standard configurations or troubleshooting procedures, consult the User Guide on CD-ROM.

## Using the Wireless Connection

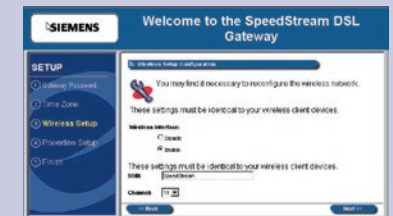
By default, the SpeedStream® Gateway is configured to work seamlessly with other SpeedStream® wireless products. The default wireless interface settings are:

SSID: SpeedStream  
Channel: 11

Mismatched wireless settings will prevent successful wireless network connections between devices, so you may need to reconfigure some wireless settings to ensure that all settings match between wireless devices if you are:

- a) Using another manufacturer's wireless products
- b) Adding the SpeedStream® Gateway to an existing wireless network

The Setup Wizard will walk you through setting up wireless settings.



## Wireless Security

By default, wireless security is disabled for ease of installation. However, it is recommended you enable wireless security on all wireless devices during installation.

You can specify WEP 64-bits, WEP 128-bits, or WPA PSK encryption methods. The Setup Wizard will walk you through setting up wireless security.



For more details on setting up wireless connections and security, consult the User Guide on CD-ROM.

# Step 4 >

## PC Configuration Procedures

### PC Configuration

In order to setup the SpeedStream® DSL Gateway, your PC must first be configured to obtain an IP address from a DHCP server.

Follow the procedure below:

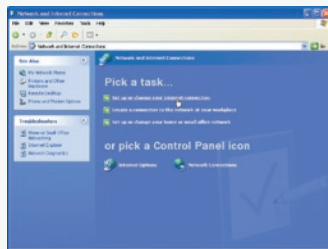
Note: The following procedures cover configuration of a PC running Windows® 2000 or XP. Please refer to the User Guide on the CD-ROM for help configuring other operating systems.

1. Click on **Start** button.
2. Click on **Control Panel**.
3. Click on **Network and Internet Connections**.
4. Click on **Network Connections**.
5. Double-click on your Network Card.
6. Click on your Network Card **Properties**.
7. Select **Internet Protocol (TCP/IP)**.
8. Click on **Properties**.
9. Select **Obtain an IP address automatically**.
10. Select **Obtain DNS server address automatically**.
11. Click on **OK**.
12. Click on **Close**.

### Internet Access

Next, make sure your PC will use the SpeedStream® DSL Gateway (and not Dial-Up Networking) when connecting to the Internet. Follow the procedure below:

1. Click on **Start** button.
2. Click on **Control Panel**.
3. Click on **Network and Internet Connections**.
4. Click on **Setup or Change your Internet Connection**.



5. Click **Setup** to change your Internet Properties.



6. Click on **Next**.
7. Click on **Connect to the Internet**.
8. Click **Next**.
9. Click **Setup my Internet Connection manually**.
10. Click **Next**.
11. Click **Connect using a broadband connection that is always on**.
12. Click **Next**.
13. Click **Finish**.

### Router Configuration

Windows Me and XP Users: If you have Universal Plug and Play (UPnP) enabled, Windows may detect the SpeedStream® modem upon startup, and provide a shortcut to the router on the desktop or system task tray. The icon will be labeled as "Residential Gateway," double-click the icon and skip to step 3.

1. Start your Web browser.
2. In the Address box, enter the following: **http://192.168.254.254**
3. When prompted for a username and password, type **admin** for the password only (username is not required).
4. The modem will prompt to change the initial login password. Follow the instructions to change the password. Click **Save**.
5. Select **Login** and enter the username and password provided by your service provider.
6. Click the **Save** button.
7. If additional configuration is desired, select **Advanced Setup** to configure DHCP, firewall settings, security options, and also to view status and statistical information.

Note: If your Service Provider requires you to use separate PPPoE client software, discontinue use of this software. The SpeedStream® modem will negotiate the PPPoE logon to your service provider's network.

**Congratulations! You have completed the installation of your SpeedStream® device.**

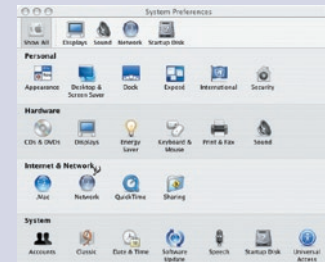
## Macintosh Configuration Procedures

### Macintosh Configuration

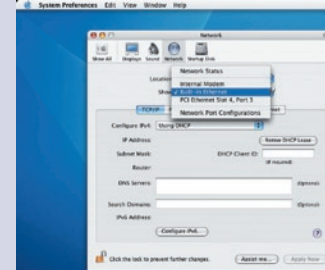
In order to setup the SpeedStream® Modem, your computer must first be configured to obtain an IP address from a DHCP server.

Follow the procedures below for OS10:

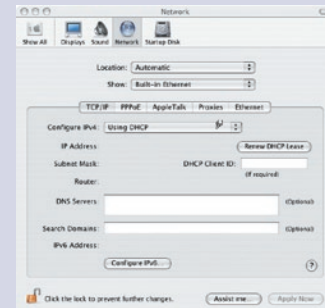
1. Click **System Preferences** in the dock.
2. Select **Network** under the **Internet & Network** section.



3. Select the correct Ethernet adapter (en0, en1, ...) from the menu.



4. Select **Using DHCP** from the **Configure IPv4** drop-down box.



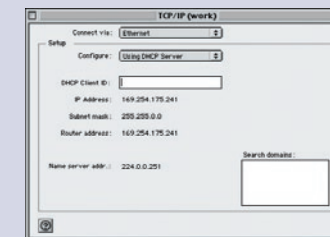
5. Click **Apply Now** and quit screen.

Follow the procedures below for OS9:

1. Click Apple -> Control Panels -> TCP/IP.








2. Select **Ethernet** from **Connect via** drop-down box.
3. Select **Using DHCP Server** from **Configure** drop-down box.



4. Close window and save changes.

**Congratulations! You have completed the installation of your SpeedStream® device.**

# Troubleshooting

LED	Off 	Green 	Blinking Green 	Red 	Blinking Red/Green 
Power	- Power not applied	Normal system operation	N/A	Flash write in progress	- POST in progress - POST error occurred (if persistent)
Ethernet	- Power not applied - No link	Normal Ethernet operation, Link okay	User traffic flowing in either direction	N/A	N/A
Wireless	- Power not applied - No link	Normal wireless operation, Link okay	Wireless user traffic flowing in either direction	N/A	N/A
DSL	- Power not applied - DSL signal not detected	DSL line is trained and ready for traffic	Steady blinking-DSL line is attempting to train	N/A	N/A
Internet	- Power not applied - No LAN data activity	PPPoE onboard session active (if used)	Establishing PPPoE session	N/A	IP connection failure
Activity	- Power not applied - No WAN or LAN activity	N/A	LAN user traffic flowing in either direction	N/A	N/A

**SIEMENS**

Global network of innovation

Siemens Subscriber Networks, Inc.  
4849 Alpha Road  
Dallas, TX 75244  
+1(972) 852-1000  
Fax +1(972) 852-1001  
E-mail [info.ssn@siemens.com](mailto:info.ssn@siemens.com)  
[www.icn.siemens.com/subscriber](http://www.icn.siemens.com/subscriber)

Copyright © 2004 SIEMENS SUBSCRIBER NETWORKS, INC. All rights reserved. Siemens and the Siemens logo are trademarks of Siemens AG, Germany. All other trademarks are held by their respective companies. Siemens reserves the right to make changes to product specifications at any time without notice.