



3041-000181

ANTI

WTC



Q1  
R16 R17  
U3  
ED10

A microcontroller chip (U3) is mounted on the PCB, surrounded by various resistors (R16, R17) and other components. A small component labeled 'ED10' is also visible.

C17  
C16

C10

R35

R74

U3

FB35

C40

U2

C39

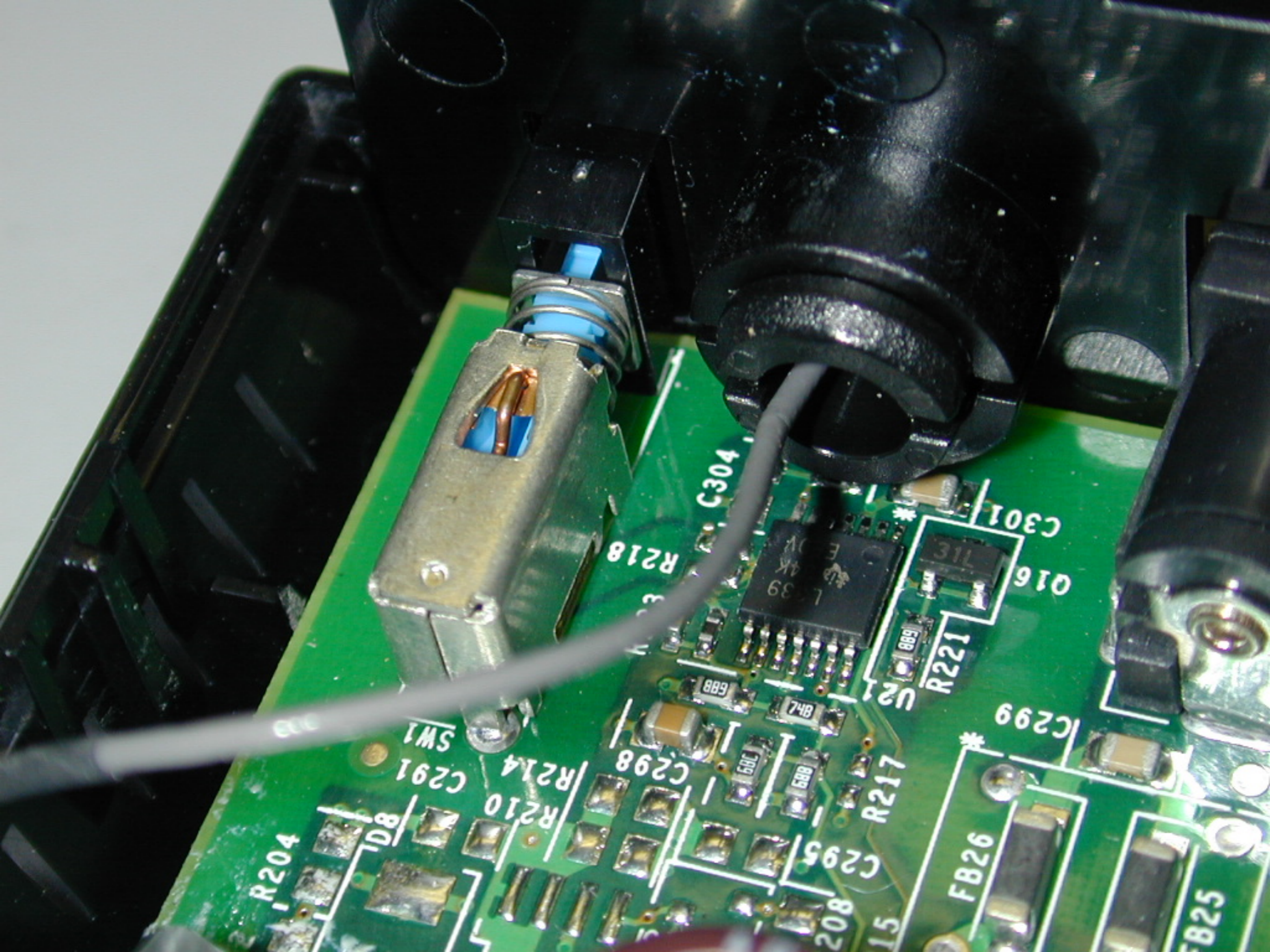
R53

R63

C5 R6

29  
2J  
TA

OB



R204

C291

R210

C298

C295

R217

R218

C301

C299

FB26

FB25

Q16  
L 39  
4K  
4K  
E

R221

Q16

SW1

208

15