

# User's guide for OfficeStation™ (L110 Series)



© Copyright by Ncomputing Co. Ltd. 2004 . - Illegal copying of this software, hardware and this documentation is prohibited by law. All other brand- and product names are trademarks of registered trademarks of the respective owners.

## Safety Instructions

The following instructions pertain to the risk of fire, electric shock or bodily injury.

Please read all of these instructions carefully.

### **Warning**

- Do not use this system on an unstable cart, stand or table.  
The product may fall, causing serious damage to the product.
- Slots and openings in the cabinet and the back have been provided for ventilation. To ensure reliable operation of your computer, and to protect it from overheating, do not block or cover these openings.
- Never push objects of any kind into the system through the cabinet openings. Objects may touch dangerous voltage points or short out parts that could result in a fire or electrical shock. Never spill liquid of any kind on the product.
- This computer should only be connected to the adapter comes with your system. If you want to use other adapter, consult your dealer.
- Do not allow anything to rest on the power cord. Do not locate this product where people will walk on the cord.
- Unplug your system form the main electrical power outlet before cleaning. Do not use liquid cleaners or aerosol cleaners. Use a damp cloth for cleaning.
- Do not use this system near water.
- Your adapter plug will only fit into a grounding-type power outlet. This is a safety feature. If you are unable to insert or replace your obsolete outlet, contact your electrician to replace your obsolete outlet. Do not defeat the purpose of the grounding-type plug.
- To avoid generating an electric shock, be sure to plug the power cord into the system before plugging it into the wall socket.
- For protection of your system and other devices during a lightning storm, or when it is left unattended and unused for long periods of time, unplug the computer and other devices form the wall outlet and disconnect the cable form system. This will prevent damage to the system and other devices due to lightning and power line surges.

## FCC Information to Use

Note : This equipment has been tested and found to comply with the limit for a Class B digital device, pursuant 15 of the FCC Rules.

These limits are designed to provide reasonable protection against harmful interference in a residential installation. This equipment generates, uses, and can radiate radio frequency energy and, if not installed and used in accordance with the instructions. May cause harmful interference to radio communications. However, there is no guarantee that interference will not occur in a particular installation. IF this equipment does cause harmful interference to radio or television reception, which can be determined by turning the equipment off nad on, the user is encourage to try to correct the interference by one or the following measures:

- Reorient or relocate the receiving antenna.
- Increase the separation between the equipment and receiver
- Connect the equipment into an outlet on a circuit different from that to which the receiver is connected
- Consult the dealer or an experience radio TV technician for help

Change or modification not expressly approved by the party responsible for Compliance could void the user's authority to operate the equipment

This Class [B] digital apparatus complies with Canadian ICES-003.  
Cet appareil numérique de la classe [B] est conforme à la norme NMB-003 du Canada

# Introductions

---

## What is OfficeStation™ ?

OfficeStation™ is a unique networking device using WoIP™ (Windows over IP) based on networking standards. You can share the resources of the host PC system by connecting OfficeStation™ terminal(s) to it, thus giving you the benefit of having several networked PCs. You can connect one or more OfficeStation™ terminals to one Host PC directly using a LAN adapter and cable or via network using a hub/router.

## Featuresn of I/O Ports

- One Power Inlet (DC-IN, 5VDC 2.0A) Jack
- One speaker Jack
- One PS/2 Keyboard connector
- One PS/2 Mouse connector
- One RJ-45(LAN) Jack
- One VGA Monitor connector

## System Requirements of Host PC

- To connect one OfficeStation™ terminal to a single host PC, the following system requirement si needed of the host PC :

Intel Pentium 4 1.0GHz processor with at least 256MB RAM or higher

- To connect two to three OfficeStation™ terminal to a single host PC, the following system requirement si needed of the host PC :

Intel Pentium 4 2.4GHz processor with Hyper - Threading technology with at least 512MB RAM or higher

- To connect four to seven OfficeStation™ terminal to a single host PC, the following system requirement si needed of the host PC :

Intel Pentium 4 3.0GHz processor with Hyper - Threading technology with at least 1024MB RAM or higher

- To connect eight to ten OfficeStation™ terminal to a single host PC, the following system requirement si needed of the host PC :

Intel Pentium 4 3.2GHz processor with Hyper - Threading technology with at least 2048MB RAM or higher

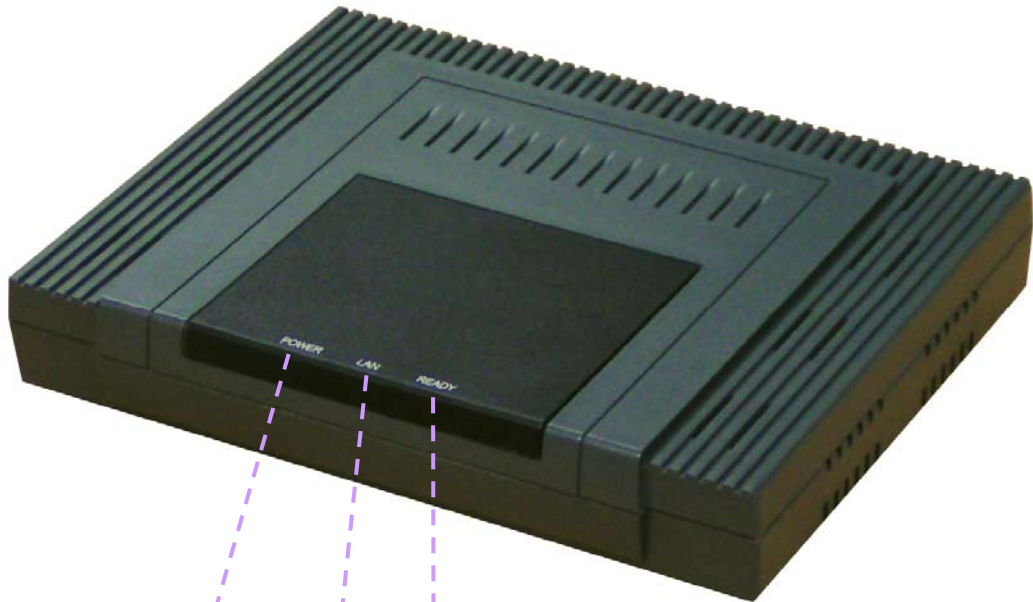
## **OS (Operating System)**

- Windows XP Home Edition
- Windows XP Professional Edition
- Windows 2000 Professional Edition

# Setting up the OfficeStation™

## 1. Component Names and Functions

### 1-1 Front Panel



#### **Power Light**

When these blue lights is on, your OfficeStation is turned ON

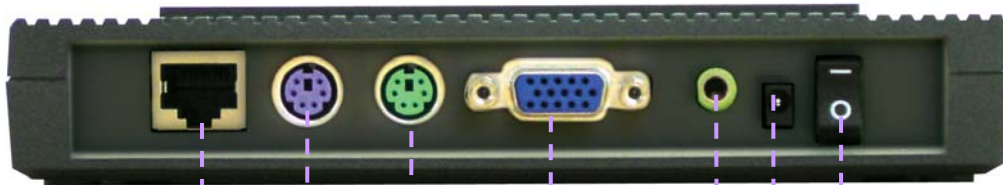
#### **Communicate Light**

When this lights is flash, on your OfficeStation is communicating with your PC

#### **Ready Light**

This light indicates diagnostics running or possible problem with your OfficeStation

## 1-2 Rear Panel



### Ethernet Jack

Lets you connect your OfficeStation to a your PC

### PS/2 Port (Keyboard)

The PS/2 port is for connect PS/2 types keyboard

### PS/2 Port (Mouse)

The PS/2 port is for connect PS/2 types Mouse

### External Monitor

Let you connect your OfficeStation to External Monitor that RGB types monitors

### Power Button

Used when you want to turn the OfficeStation on/off

### Power Port

The power supply code goes here.

### Audio out Jack

The Stereo headphone jack is used to connect the OfficeStation's audio out signal to amplified speakers

## 2. Connecting OfficeStation to a PC

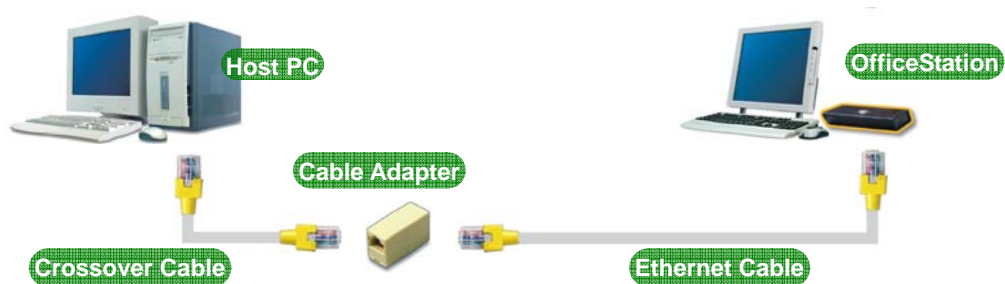
Your OfficeStation can be connected to a PC in one of two ways

### 2-1 Connecting to a PC Directly(Peer-to-Peer)

In order to connect the OfficeStation to a PC directly using wire, you must have a LAN card installed in your PC, or must have that function built in.

1. Plug one end of your Ethernet Crossover cable into cable adapter on the OfficeStation, Cable Adapter and Crossover cable that are optional.
2. Plug the other end of the Ethernet cable into the Ethernet port on your PC.

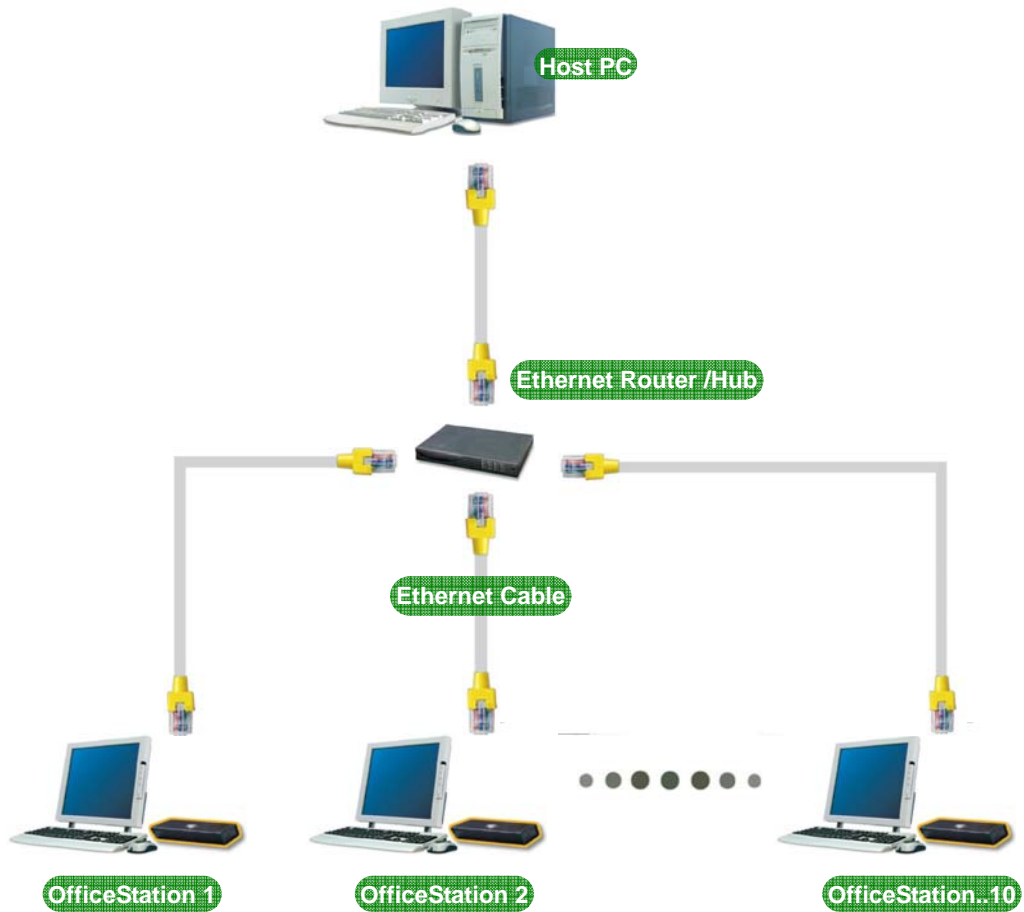
See the below picture.





## 2.2 Connecting to a PC through a Hub or a Router

Connect the OfficeStation to a PC through a Hub or Router as shown below.



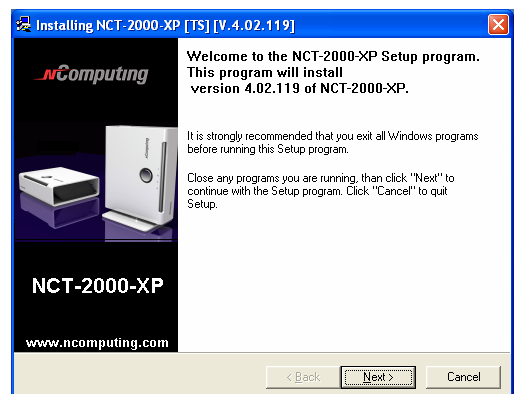
# Installing the OfficeStation™ Software

## 1. Quick Installation the Host PC Program

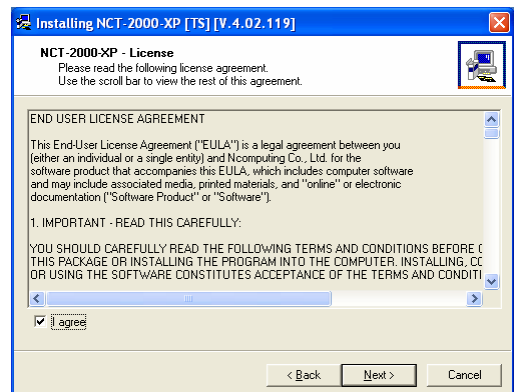
Insert the driver for OfficeStation installation CD into your PC's CD-ROM driver and follow the instructions.

**1** You need to setup program manually in the present.  
Start -> Run -> Open type X:/install.exe  
Substitute your CD-ROM drive letter for the "x".

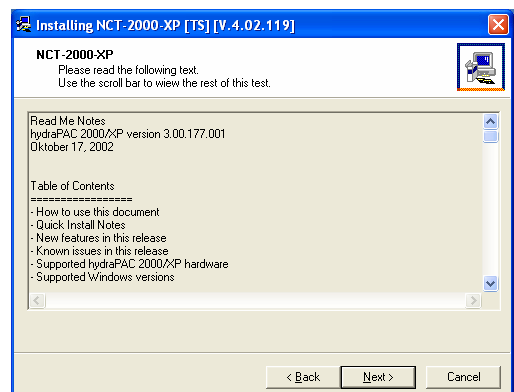
**2** You will see preparing to install window when installation gets started. Click [Next]



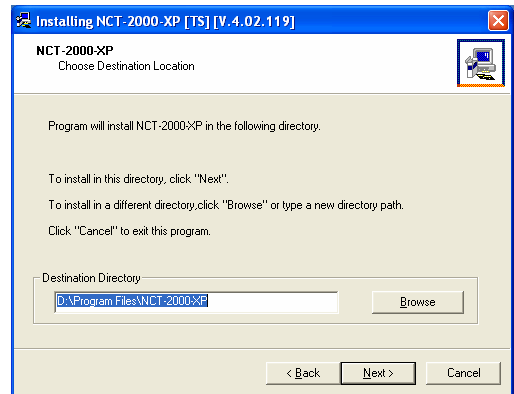
**3** Please read the End user license agreement and Check the "I agree":



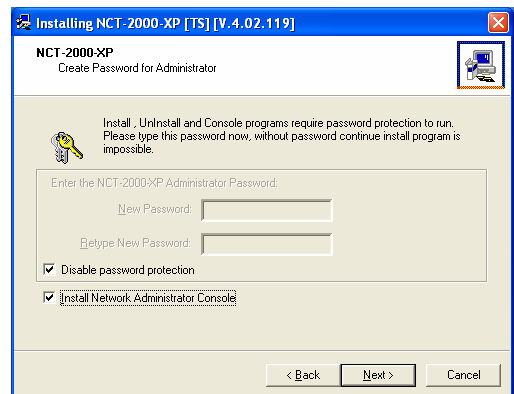
**4** Please read the Read Me Notes and Click [Next]



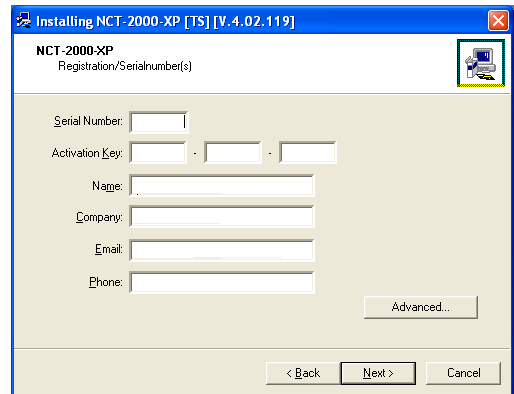
**5** Select installation folder windows appears  
Click [Next] button if you want to install NCT-2000-XP in the default folder



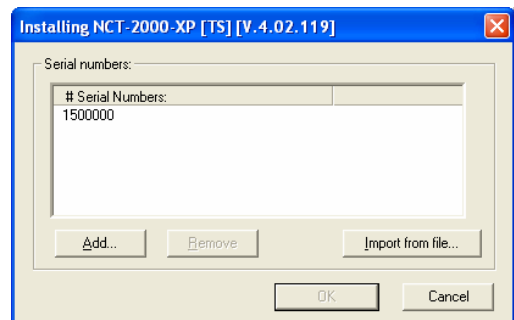
**6** Click [Disable password protection] button if you want to not to use password.  
If you want to specify password, type the password, and confirm it.  
Click [Installation Network Administrator Console], If you want to using the Administrator Console, and click [Next]



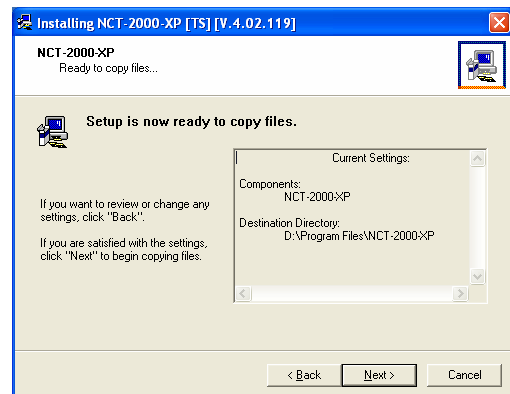
**7** Enter the serial number and activation key these are bottom side the OfficeStation.  
And type the user's information.



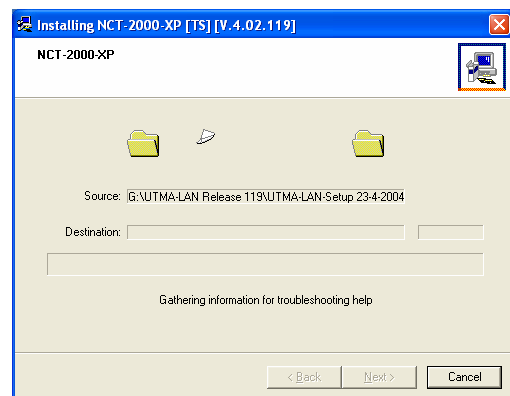
**8** If do you want to add more serial number, Click [Advance..]  
Click [Add] button and add the serial number what you want.



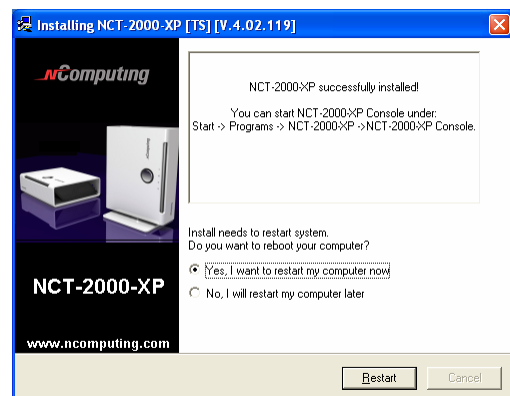
9 Click [Next]



10 Copies files needed for installation.



11 When the 'installation complete' window appears, click [Restart] button after select "Yes, I want to restart my computer now."

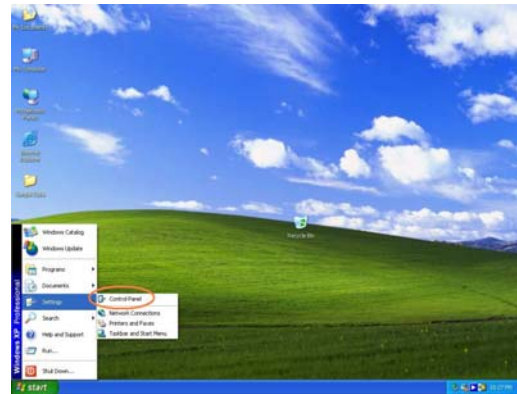


## 2. Network Setup

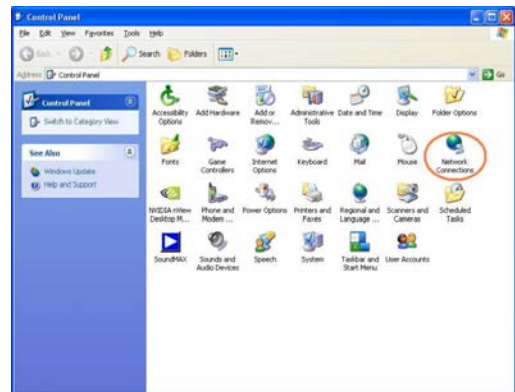
### 2-1 setting up the network environment in Windows XP

#### Connecting to a PC Directly (Peer-to-Peer)

**1** You can set up the network environment in your PC,  
Go to Start ->  
right Click on My Network Places ->

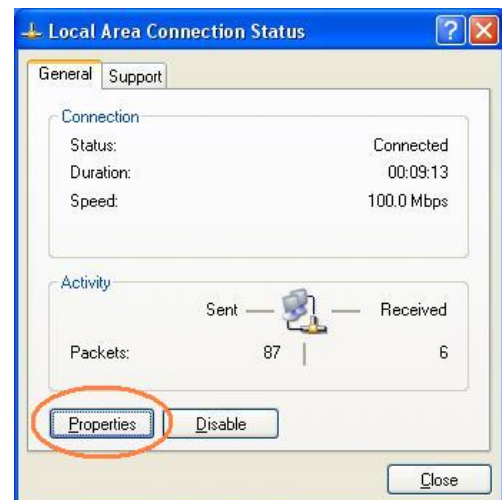


**2** Double Click the “network Connection” icon

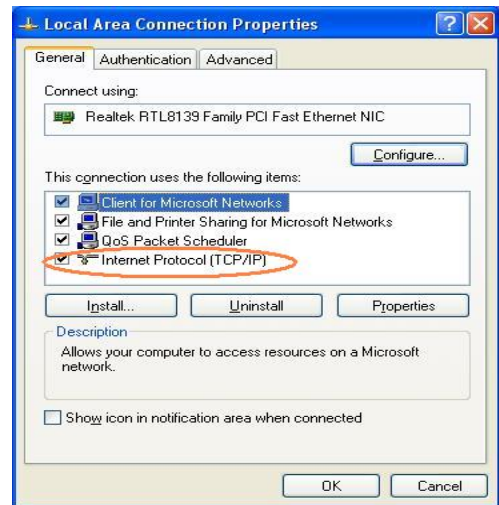


**3** Click the Local network connection status

**4** Click the Properties Icon



5 Click Internet Protocol (TCP/IP)

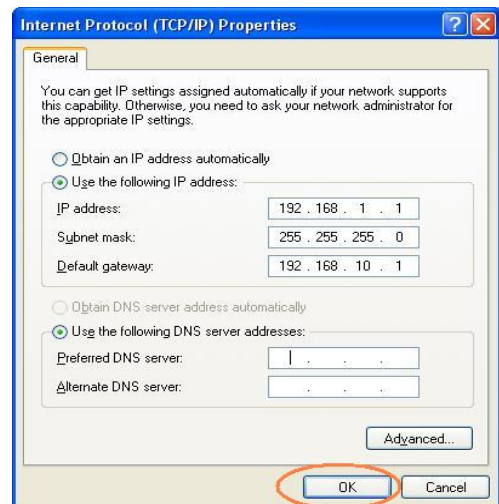


6 Click Properties ->  
Select "Use an IP following IP address"

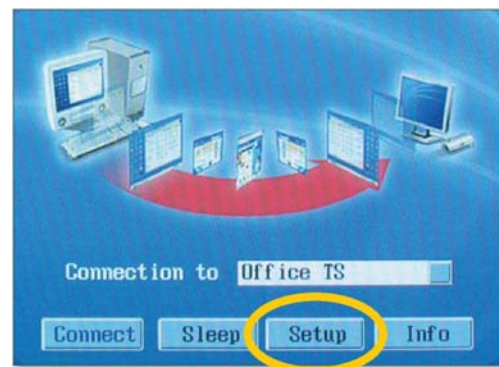
Type in the IP address, subnet mask and Default gateway of the your PC

And Click OK

e.g) IP Address: 192.168.1.1  
Subnet mask: 255.255.255.0  
Default gateway: 192.168.10.0

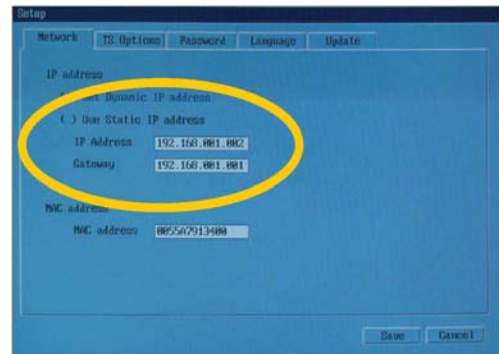


7 Power on the OfficeStation->  
Click Setup menu bar->



8 Click Network Tap ->  
Click Use Static IP Address->  
Type in the IP Address and Gateway address of your a OfficeStation.

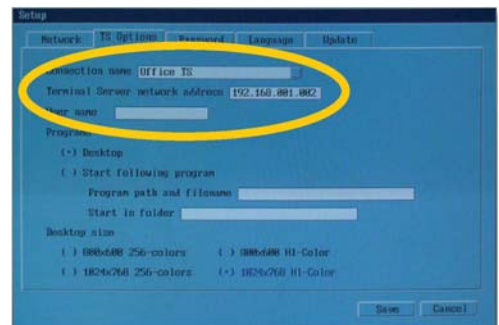
e.g) IP Address: 192.168.1.2  
Default gateway: 192.168.10.0



9 Click TS Option Tap ->  
Type the Host PC's IP address in the Terminal Server Network address.

And Click Save

e.g) Terminal Server Network address: 192.168.1.1



10 Click Connect



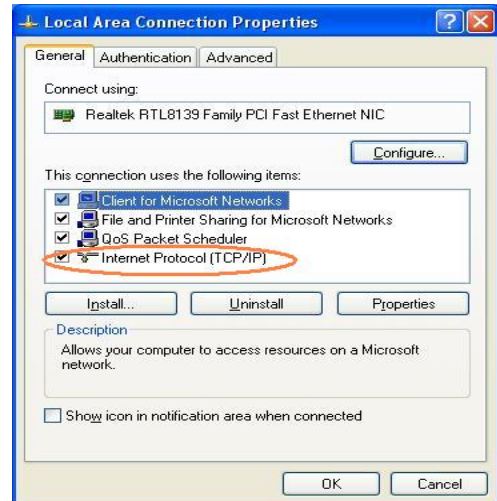
## Connecting to a PC through a Hub or a Router

To connect to the PC make sure the network in your computer is configured properly. Here's how to configure the network properties to connect PC with the OfficeStation.

### Connect to PC with a Hub

**1** You can set up the network environment in your PC, Go to Start -> right Click on My Network Places -> Double Click on the Network Connection associated with the Ethernet adapter.

Click Internet Protocol (TCP/IP)

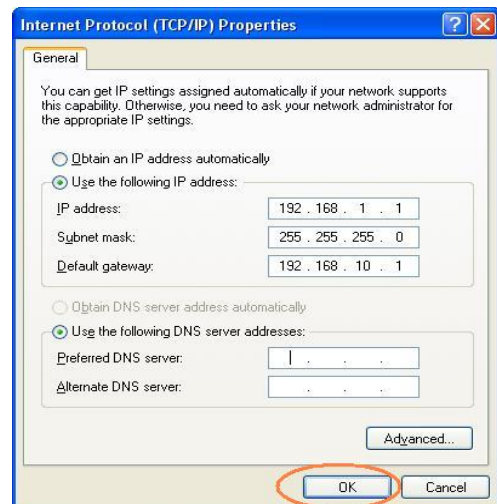


**2** Click Properties -> Select "Use an IP following IP address"

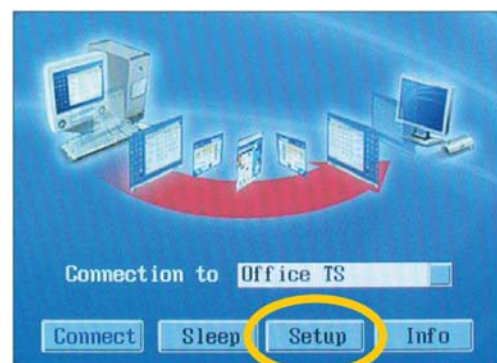
Type in the IP address, subnet mask and Default gateway of the your PC

And Click OK

e.g) IP Address: 192.168.1.1  
Subnet mask: 255.255.255.0  
Default gateway: 192.168.10.0



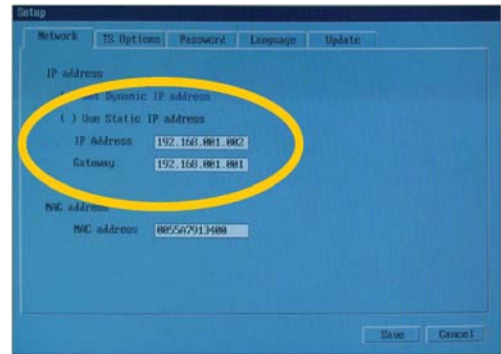
**3** Power on the OfficeStation-> Click Setup menu bar->





**4** Click Network Tap ->  
Click Use Static IP Address->  
Type in the IP Address and Gateway address of your a OfficeStation.

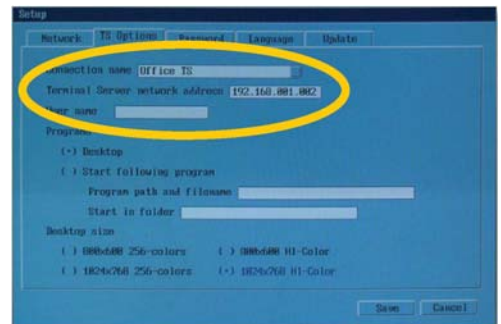
e.g) IP Address: 192.168.1.2  
Default gateway: 192.168.10.0



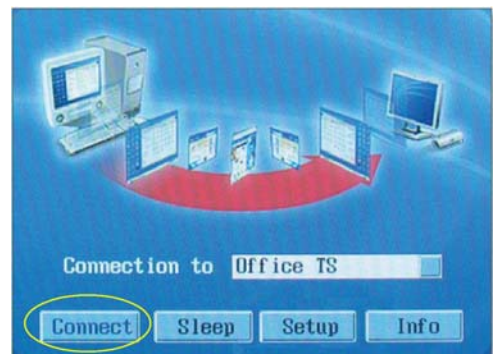
**5** Click TS Option Tap ->  
Type the Host PC's IP address in the Terminal Server Network address.

And Click Save

e.g) Terminal Server Network address: 192.168.1.1



**6** Click Connect

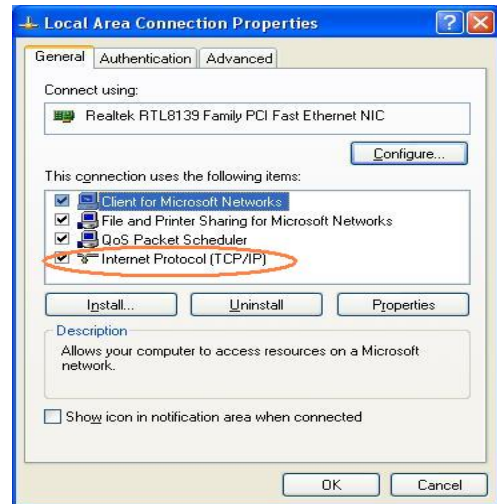


## Connect to PC with a Router

For additional settings or information about your Router, refer to its Manual.

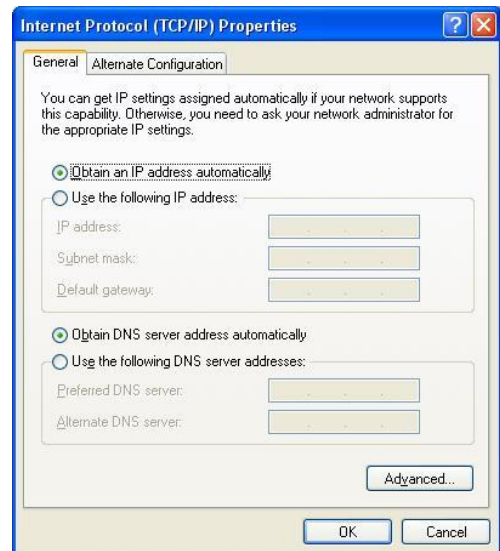
**1** You can set up the network environment in your PC,  
Go to Start ->  
right Click on My Network Places ->  
Double Click on the Network Connection associated with  
the Ethernet adapter.

Click Internet Protocol (TCP/IP)

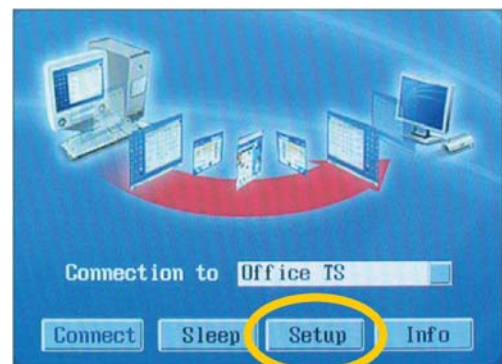


**2** Click Properties ->  
Select "Obtain an IP address automatically"

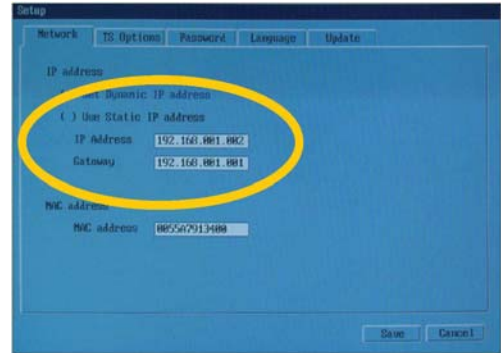
And Click OK



**3** Power on the OfficeStation->  
Click Setup menu bar->



4 Click Network Tap ->  
Click Get Dynamic IP address ->



5 Click TS Option Tap ->  
Type the Host PC's IP address in the Terminal Server  
Network address from received the Router.

And Click Save

