

核 准	主 辦
許振軒	許勝欽

電 氣 規 格 書

機種: **RYU Antena**

5720W0335300

ANT 2.4G PIA 3030.4 170B L (MIC) ASSEM
LFP

5718W0012300

ANT 2.4G PIA 3030.4 170B L (MIC) ASSEM
LFP

5718A0012300

ANT 2.4G PIA 3030.4 170B L ASSEM LFP

日期: **2015/03/18**

版次: **1.10**

神 準 科 技 股 份 有 限 公 司

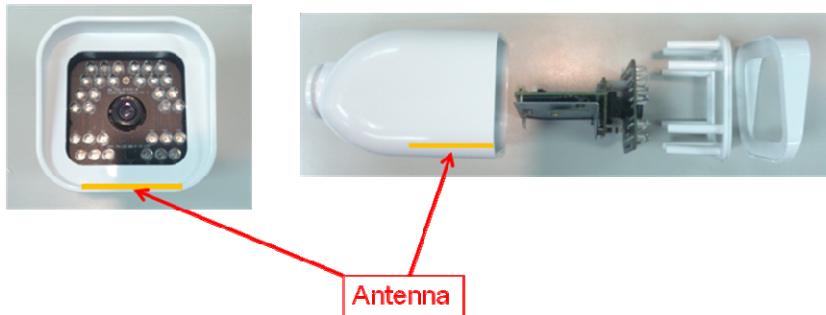
S1-WI-RD-005-FORM01-V01

Embedded Single-Band Antenna

5720W0335300 ANT 2.4G_PIA_3030.4_170B_L (MIC) ASSEM LFP

5718W0012300 ANT 2.4G_PIA_3030.4_170B_L (MIC) ASSEM LFP

5718A0012300 ANT 2.4G_PIA_3030.4_170B_L ASSEM LFP



1. Summary :

Frequency (MHz)	2400 - 2500
Peak Gain (dBi)	3.4
VSWR	2:1
Impedance (Ohms)	50
Dimension (mm)	30x30x0.4
Connector	IPEX
Cable Phi (mm)	1.13
Cable length (mm)	170
Cable Color	Black

2. Electrical Specification :

Those specifications were specially defined for **RYU** model, and all characteristics were measured under the model's handset testing jig .

2-1. Frequency Band:

Frequency Band	MHz
WLAN	2400~2500

2-2. Impedance

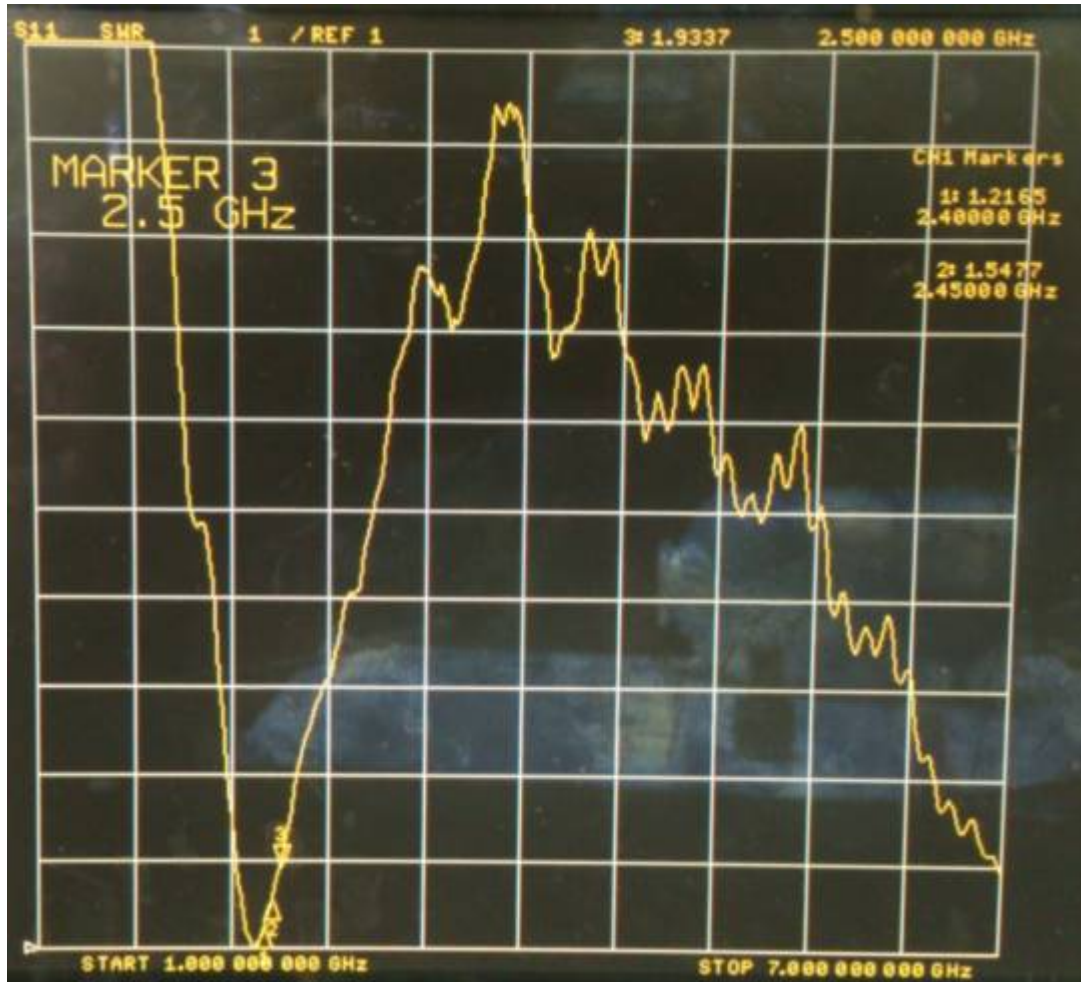
50 ohm nominal

2-3. Matching circuit:

None

2-4. VSWR

Frequency (MHz)	2400	2450	2500
VSWR	1.21	1.54	1.93

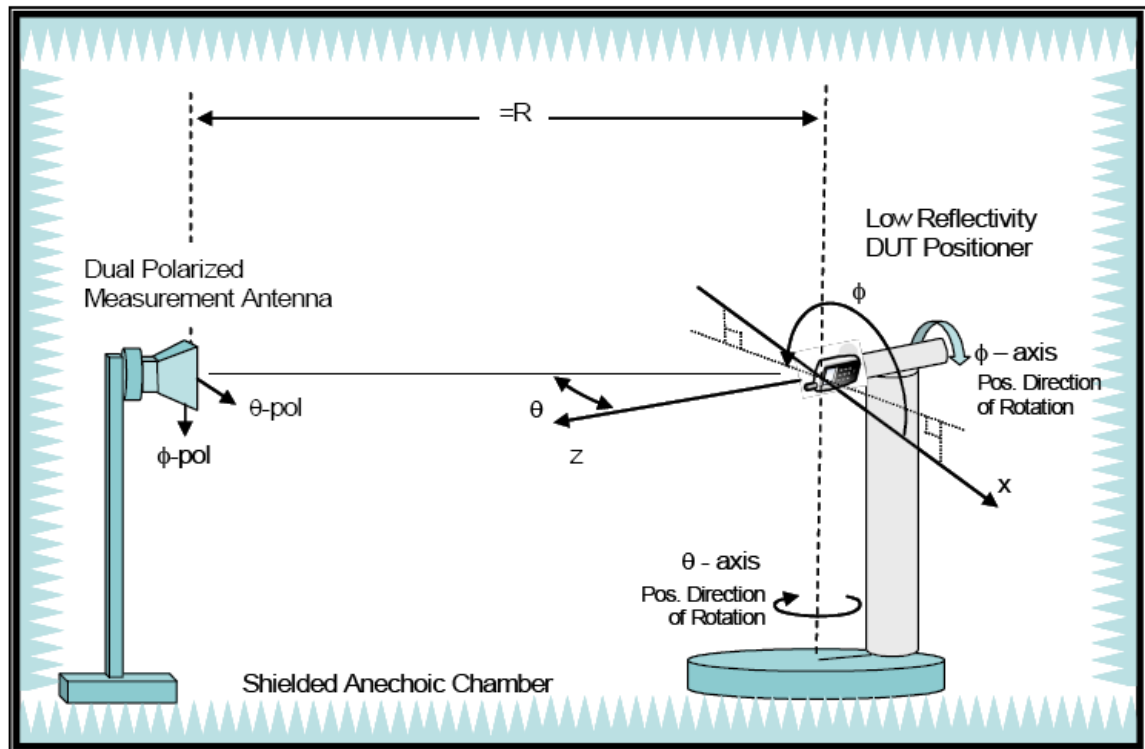


2-5. Gain and Radiation Pattern

2-5.1 Measure method

1. Using a low loss coaxial cable to link a standard handset jig
2. Fixed this handset jig on chamber's rotator plane
3. Linking jig into network analyzer port and using a probing horn antenna to collect data.
4. Using another standard gain horn antenna to calibrated those data

2-5.2 Chamber definition



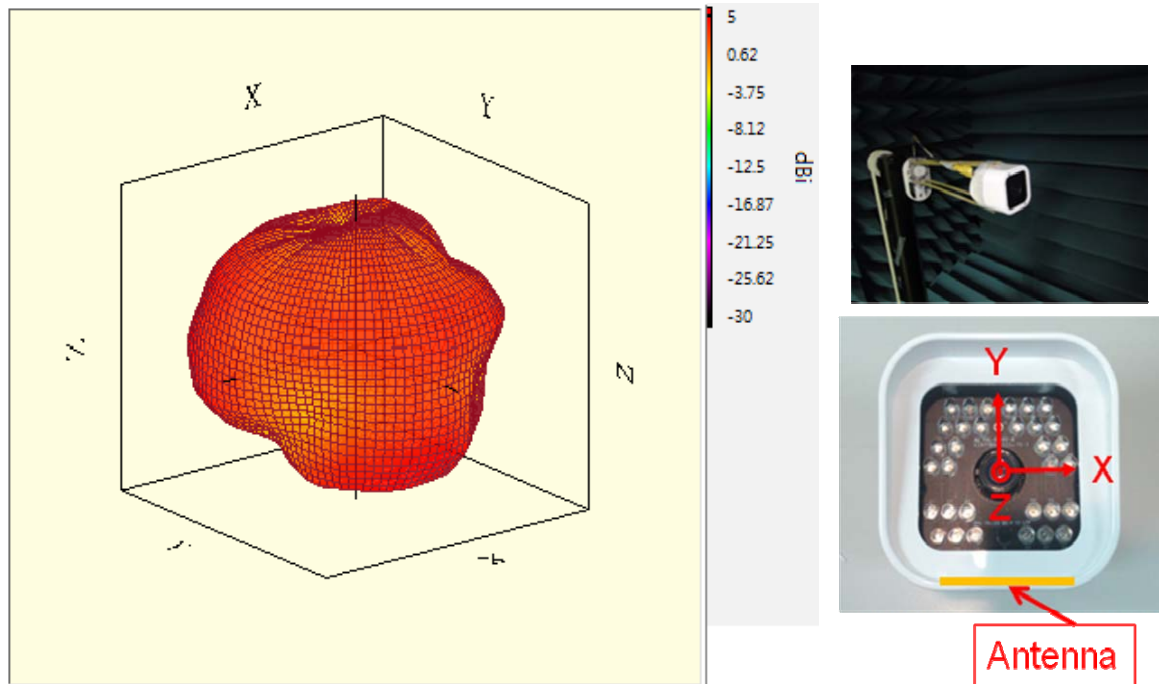
1. An anechoic chamber (8x4mx4) which satisfied far-field condition was applied to avoid multi-path effect
2. The quiet zone region is 40cmx40cmx40cm at the center of rotator
3. The distance between DUT and standard antenna is 4.38 m
4. Standard gain horn antenna (700MHz ~6GHz)

2-5.3 Gain data and radiation pattern

Antenna gain is marked [dBi] and is based on STANDARD HORN antenna. The data shows Peak-Gain and Average-Gain.

Frequency	2400	2450	2500
Average Gain (dB)	-0.93	-1.54	-1.16
Efficiency (%)	80.68	70.14	76.61
Peak Gain (dBi)	3.40	2.63	2.66

Table2-5-1 Gain Data.



Pic2-5-1 3D Gain Pattern.

3. Mechanical Specification:

3-1. Mechanical Configuration:

The appearance of the antenna is according to drawing Figure 3-1-1.

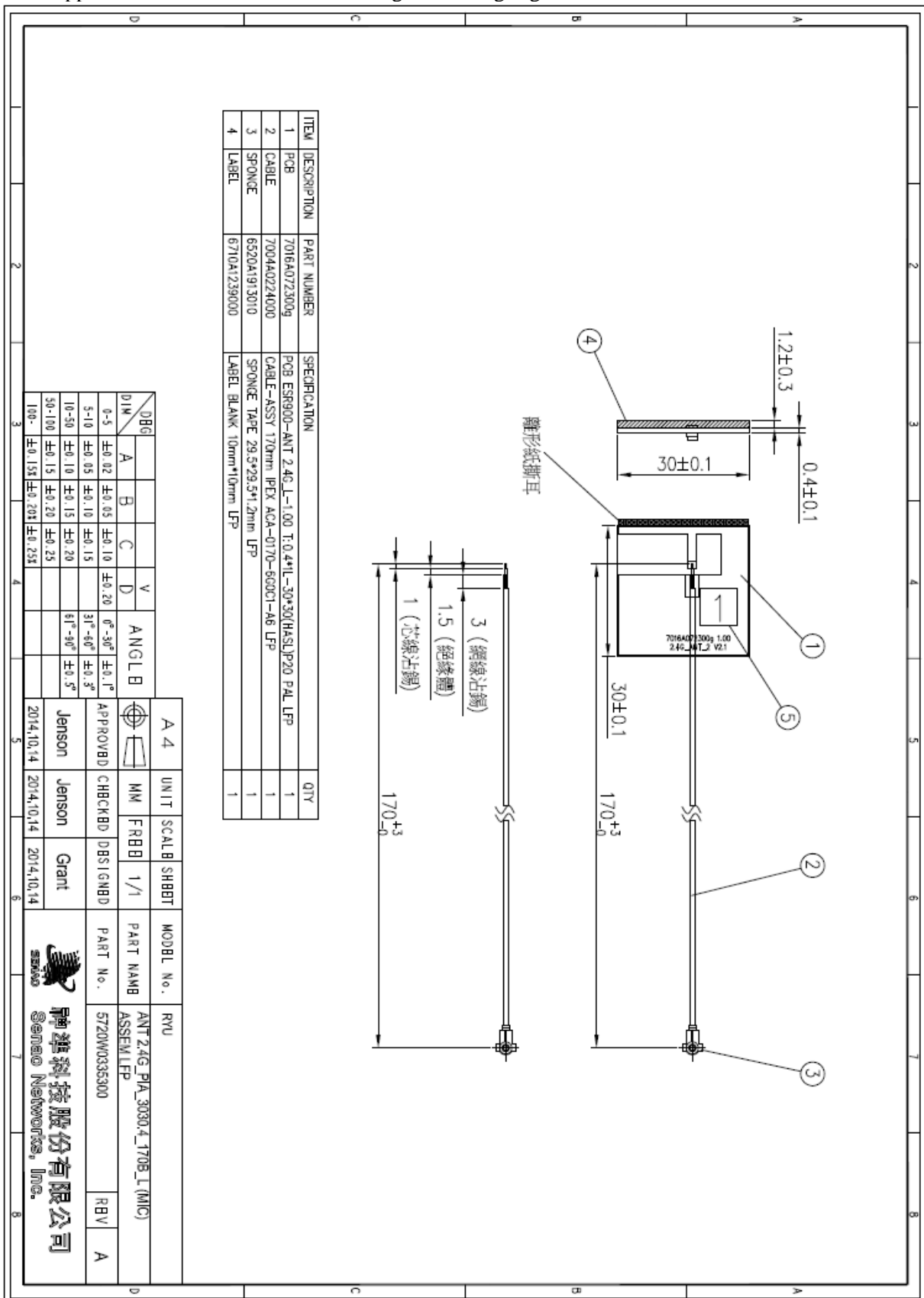


Figure 3-1-1 The antenna drawing

Change history

Change history			
Date	Subject/Comment	Old	New
2014/10/21	Newly create	NA	1.00
2015/03/18	增加天線共用料	1.00	1.10