



PRODUCT WARRANTY INFORMATION

Please visit our website at www.myLEVANA.com for information about your product's warranty

ENGLISH

We take quality very seriously. This is why all of our products come with a one-year warranty from the original purchase date against defects in workmanship and materials. If you have warranty or support issues please contact us using any of the following methods:

Phone: 1.866.946.7828
Fax: 1.888.771.1701
Web: www.myLEVANA.com

LEVANA Canada
4080 Montrose Road
Niagara Falls, ON
Canada L2H 1J9

LEVANA USA
60 Industrial Parkway #Z64
Cheektowaga NY
USA 14227

Warranty Terms

1. LEVANA® products are guaranteed for a period of one year from the date of purchase against defects in workmanship and materials. This warranty is limited to the repair, replacement or refund of the purchase price at LEVANA's option.
2. This warranty becomes void if the product shows evidence of having been misused, mishandled or tampered with contrary to the applicable instruction manual.
3. Routine cleaning, normal cosmetic and mechanical wear and tear are not covered under the terms of this warranty.
4. The warranty expressly provided for herein is the sole warranty provided in connection with the product itself and no other warranty, expressed or implied is provided. LEVANA assumes no responsibilities for any other claims not specifically mentioned in this warranty.
5. This warranty does not cover the shipping cost, insurance or any other incidental charges.
6. You MUST call LEVANA before sending any product back for repair. You will be sent a Return Authorization form with return instructions. When returning the product for warranty service, please pack it carefully in the original box with all supplied accessories, and enclose your original receipt or copy, and a brief explanation of the problem (include RA #).
7. This warranty is valid only in Canada and the continental U.S.
8. This warranty cannot be re-issued.

TABLE OF CONTENTS

PRODUCT WARRANTY INFORMATION	1
WHAT'S INCLUDED	3
OPTIONAL ACCESSORIES	3
FEATURES	4
BUTTONS AND CONNECTIONS - PARENT UNIT	5
BUTTONS AND CONNECTIONS - CAMERA	7
SETTING UP YOUR SYSTEM	8
CONNECTING POWER TO THE PARENT UNIT	8
CONNECTING POWER TO THE CAMERA	8
MAIN MENU ICONS	9
SCREEN ICONS	10
PAIRING THE CAMERA(S) & PARENT UNIT	11
PAIRING THE ADDITIONAL CAMERAS	11
PAGING THE PARENT UNIT	11
PLACEMENT OF THE PARENT UNIT	12
CHARGING THE BATTERY	12
PLACEMENT OF THE CAMERA	13
MOUNTING THE CAMERA ON A TABLETOP SAFELY	13
MOUNTING THE CAMERA ON A WALL SAFELY	14
SWITCHING THE CAMERA ON/OFF	15
PARENT UNIT OPERATION	15
TURNING THE PARENT UNIT ON/OFF	15
TURNING THE SCREEN ON/OFF	15
USING THE TALK TO BABY™ TWO-WAY INTERCOM	15
TURNING THE NIGHTLIGHT ON/OFF	16
SELECTING A LULLABY	16
ADJUSTING THE LULLABY VOLUME	17
SETTING THE BRIGHTNESS	17
SETTING THE TEMPERATURE	17
SETTING THE DATE & TIME	18
USING POWER SAVE MODE	18
SETTING THE FEEDING & NAP TIMER	19
CHANGING THE LANGUAGE	19
SELECTING THE CAMERA VIEW	20

ENGLISH

TABLE OF CONTENTS

CONTACTING CUSTOMER SUPPORT	21
TROUBLESHOOTING	22
SPECIFICATIONS	23
FCC STATEMENT	25
SAFETY INSTRUCTIONS	25
DRILLING TEMPLATE	27
NOTES	86

ENGLISH

WHAT'S INCLUDED

- 2.4" LCD Video Monitor
- Night Vision Camera
- Rechargeable Battery
- 2 Power Adapters
- Instruction Manual
- 1 Year Warranty
- 24/7 Lifetime Live Customer Support



Camera

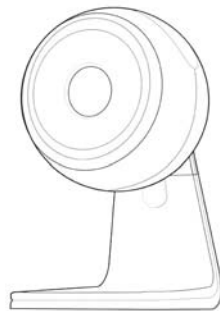


Parent unit



Rechargeable Battery

OPTIONAL ACCESSORIES



Era™ Additional Camera: model 32104

This system supports up to 3 additional cameras!

FEATURES



ClearVu® Digital Wireless Technology

ClearVu® technology enables you to see and hear your child with outstanding precision and clarity from up to 500 feet away.



Three Soothing Lullabies

Choose from three different lullabies to soothe your baby to sleep using the parent unit.



Temperature Monitoring to Ensure Comfort

Check the temperature in the nursery at any time to ensure your child is comfortable



Night Vision

The built-in night vision allows you to see your child, even in complete darkness, from up to 15 feet away.



Talk to Baby™ Two-Way Intercom

With the simple press of a button you can talk to your child at any time without entering the nursery



Nap and Feeding Timer

The built-in custom-programmed timer reminds caregivers when your baby should be eating or sleeping.



Color-Changing Nightlight

A gentle light show can help make the nursery more relaxing and soothing for your baby.



Expand Your System - Additional Cameras

Add up to three additional cameras to expand your baby monitoring experience.



Power-Saving Mode

Conserve your monitor's battery power by selecting to use audio-only mode.



24/7 Lifetime Live Customer Support


Our customer support team can be reached by phone 24 hours a day, 7 days a week, or by email and live web chat. You'll always have access to an expert in English, Spanish and French.

ENGLISH

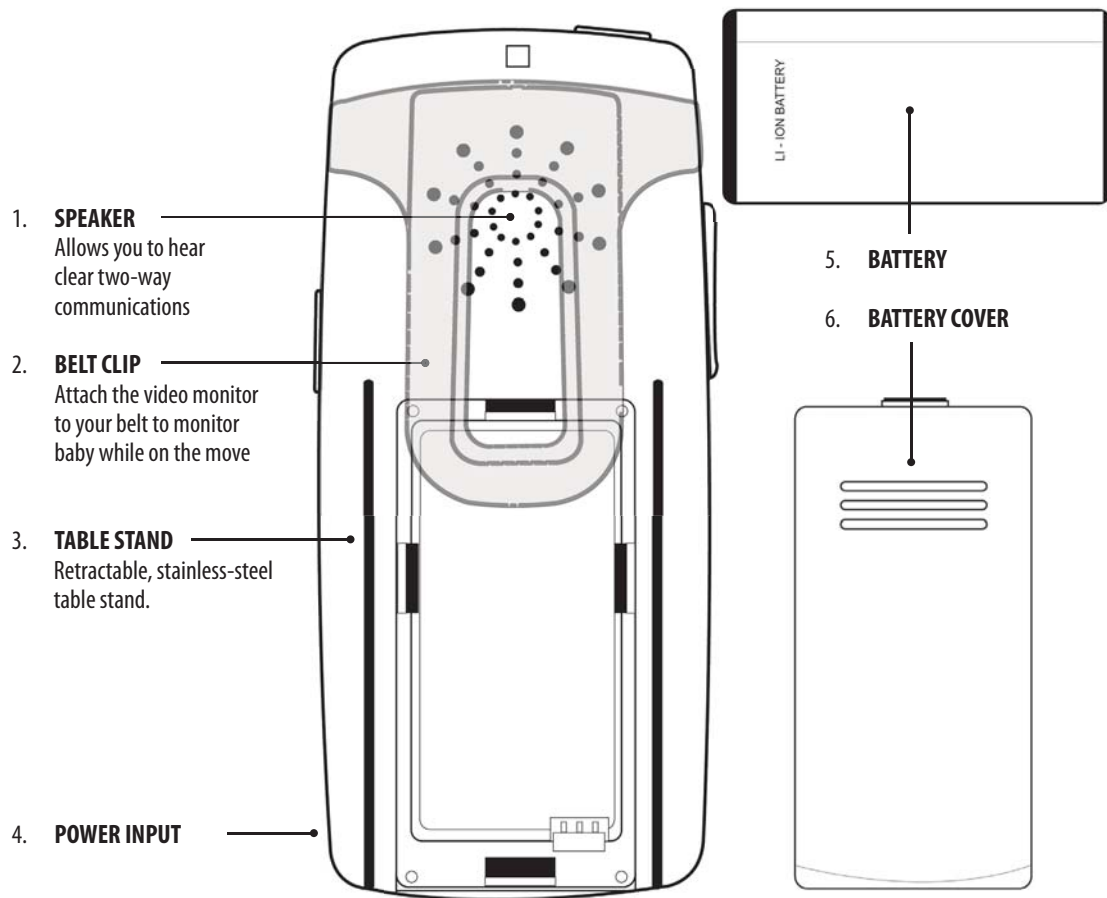
1. This product cannot replace responsible adult supervision.
2. Strangulation Hazard: Children can become entangled in cords. Power cords should be kept more than 3 feet away from the crib and baby's reach at all times. Baby monitors/Cameras with power cords should never be hung on or near the crib.
3. Product may not be exactly as shown on the package. Some images are used for illustration purposes only.
4. Battery life of 4 hours based on full duration testing. Battery life may vary depending on usage.
5. LEVANA does not endorse any LEVANA products for illegal activities. LEVANA is not responsible or liable in any way for any damage, vandalism, theft or any other action that may occur while a LEVANA product is in use by the purchaser.
6. Check your child's safety at regular intervals.

BUTTONS AND CONNECTIONS - PARENT UNIT


ENGLISH

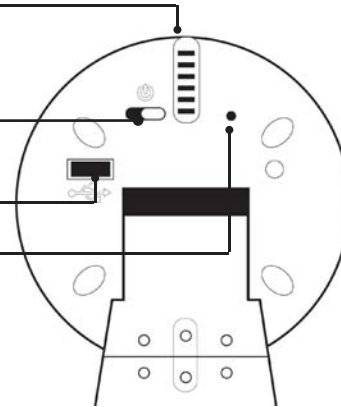
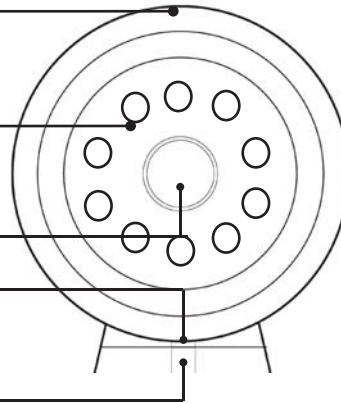
- 
1. **VIDEO ON/OFF/POWER**
Turn video image ON/OFF or Power ON/OFF
2. **LED SOUND BAR**
LED lights show different levels of sound
3. **TALK BUTTON**
Press and hold to talk, release to listen
4. **NAVIGATIONAL BUTTONS**
The ▲▼◀▶ buttons allow you to navigate through the menu screens
5. **SELECT BUTTON**
Allows you to make a selection while in the MAIN MENU
6. **2.4" LCD SCREEN**
7. **MENU BUTTON**
Allows you to access the MAIN MENU to customize your settings and also exit the MAIN MENU
8. **VOLUME CONTROL**
The ▲▼ buttons allow you to increase or decrease the volume
9. **MICROPHONE**
Allows your voice/sounds to be heard clearly through the camera

BUTTONS AND CONNECTIONS - MONITOR



BUTTONS AND CONNECTIONS - CAMERA

- NIGHTLIGHT** —
Color-Changing Nightlight controlled by the parent unit
- 10 IR LEDs** —
Emits IR light to see up to 15ft in complete darkness
- CAMERA LENS** —
- MICROPHONE** —
Allows your voice/sounds to be heard clearly through the parent unit
- SPEAKER** —
Allows you to hear clear two-way communications
- TEMPERATURE SENSOR** —
Reports the temperature in the room to the parent unit
- ON/OFF  SWITCH** —
Turns the camera on and off
- POWER INPUT** —
- PAIRING/PAGING BUTTON** —
Allows you to pair the camera to the parent unit or to locate the parent unit



ENGLISH

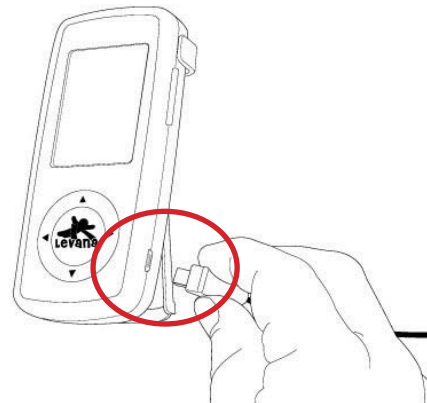
SETTING UP YOUR SYSTEM

Congratulations on the very special addition to your family! Here at LEVANA® we've had a new addition as well. We're thrilled to announce the arrival of ERA, the next generation in digital video baby monitors. We know nothing is more important than your baby's safety. With LEVANA you'll find the peace of mind you deserve.


LET'S GET STARTED!

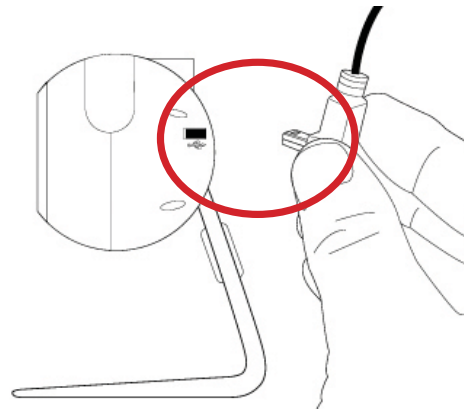
Connecting power to the Parent Unit

1. Connect the small end of one power adapter into the DC input on the side of the parent unit as shown in the diagram.
2. Connect the other end of the adapter into an available wall outlet.



Connecting power to the Camera

1. Take the second power adapter and connect the small end of the power adapter into the DC input on the back of the camera as shown in the diagram. **For safety reasons, ONLY use the adapters included in the package.**
2. On the back of the camera, slide the power switch to the RIGHT  for the ON position.



ENGLISH

SETTING UP YOUR SYSTEM

MAIN MENU ICONS



Color-Changing Nightlight

Turns the nightlight on or off at any time



Temperature Monitoring

Select to turn temperature monitoring on or off to ensure your child is comfortable



Language

Choose to view your menu options in English, French or Spanish



Brightness

Choose from five brightness levels for your screen



Pairing

Select when pairing your camera(s)



Nap and Feeding Timer

Set, pre-set and turn the nap or feeding timer on/off.



Three Soothing Lullabies

Select or turn off the lullaby feature



Power-Saving Mode

Select to turn audio-only mode on or off



Date and Time

Set the Date and Time; select Display Time on or off



Camera Selection

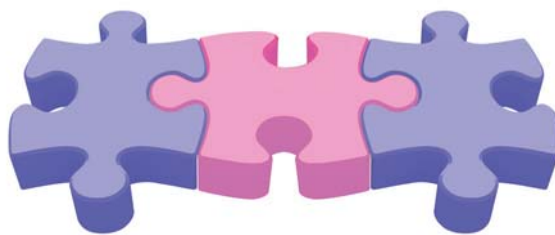
Choose to view Cam 1, Cam 2, Cam 3, Cam 4, Quad View or Sequence Mode



Customer Support

Select to view our different Customer Support options

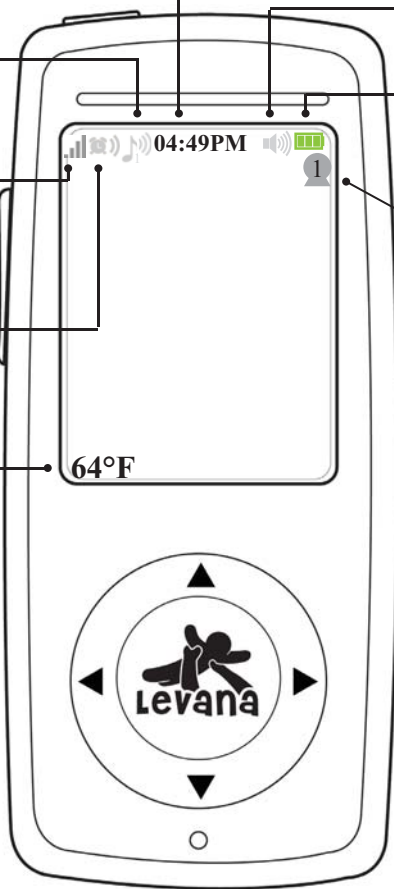
ENGLISH



SETTING UP YOUR SYSTEM

SCREEN ICONS

- CURRENT TIME**
- LULLABY/VOLUME**
Shows you the lullaby playing and volume level
- SIGNAL STRENGTH**
Indicates the signal strength between the camera and parent unit
- FEEDING/NAP TIMER**
- ROOM TEMPERATURE**
Allows you to view the current temperature in the baby's room
- VOLUME**
Indicates the volume level
- BATTERY STRENGTH**
Shows you the current level of battery power and when to recharge
- CAMERA VIEW**
Shows you which camera is currently viewed



ENGLISH


SETTING UP YOUR SYSTEM



Pairing the camera(s) and parent unit

The camera and parent unit come paired (connected) to each other automatically. However, if upon opening this package the devices do not automatically connect and transmit, you may do so manually.

Note: Before you begin, be sure to have the parent unit and the camera(s) side by side. We also recommend having a paper clip on hand to push the PAIRING

1. To pair your camera and parent unit, press the MENU button. Using the navigational arrows on the front of the parent unit, highlight the pairing icon and press the LEVANA button once to select.
2. When pairing a single camera, select the  icon. When you see PAIRING on the screen, quickly use the tip of the paper clip to **press and hold** the pairing button on the back of the camera.

When successfully paired, you will see PAIRING SUCCESSFUL and the video/audio will be transmitted automatically.

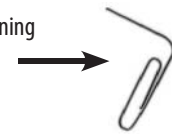
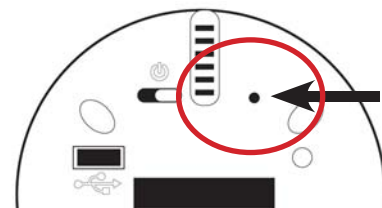
To pair additional cameras, repeat steps 1 to 3 and be sure to select the correct camera number in the Pairing menu for each additional camera.

Note: If the NO DEVICE FOUND message appears on the main screen, disconnect and reconnect the power supply from the camera, make sure the ON/OFF switch is ON and start the PAIRING process from the beginning.



Paging the parent unit

If you misplace the parent unit, you can use the Paging function to locate it by pressing the Pairing Button once. The parent unit will beep slowly until it is found. Press any button on the parent unit to stop the beep.



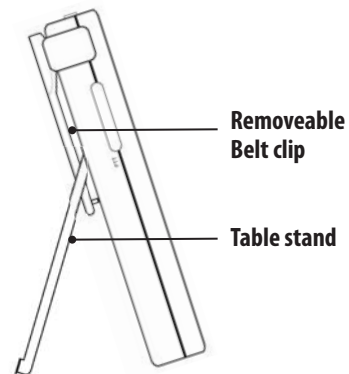
ENGLISH

SETTING UP YOUR SYSTEM

Placement of the Parent unit

This parent unit can be placed on a tabletop or you can also carry it on your belt.

1. You can place the parent unit on a tabletop by using the retractable, stainless-steel table stand on the back of the parent unit. When not in use, simply tuck table stand away into the back of the parent unit.
2. You can also carry the parent unit on your belt by using the integrated belt clip on the back of the parent unit and sliding the clip over your belt.

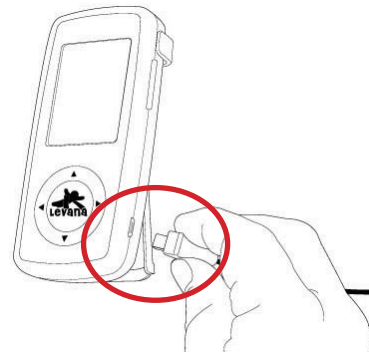


ENGLISH

Note: Baby monitors and cameras with power cords should never be hung on or near the crib as it is a strangulation hazard. Power cords should be kept no less than 3 feet away from the crib and the baby's reach at all times.

Charging the Battery

1. Connect the small end into the DC Jack on the side of the parent unit as shown in the diagram, connect the other end of the adapter into an available wall outlet.
2. The icon in the top right corner of the main screen will show you the battery power status.
3. For safety reasons, **ONLY** use the adapters included in the package.



One
Bar



Two
Bars



Battery
Charging



Battery
Empty



Battery
Full

SETTING UP YOUR SYSTEM

Placement of the camera

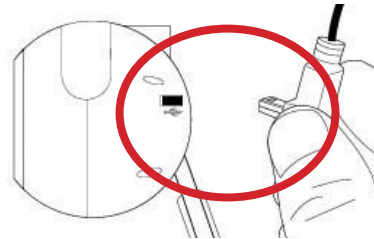
This camera can be placed on a tabletop or hung from a screw on the wall above the area being monitored. Place the camera within 15 feet of the area being monitored for best picture results.

Note: Baby monitors and cameras with power cords should never be hung on or near the crib as it is a strangulation hazard. Power cords should be kept no less than 3 feet away from the crib and the baby's reach at all times.

ENGLISH

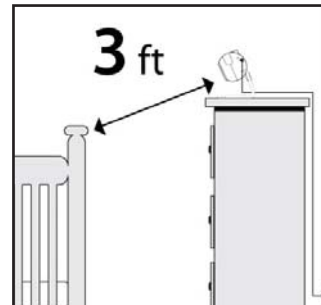
Connecting power to the camera

1. Connect the small end into the DC input on the back of the camera, connect the other end of the adapter into an available wall outlet.



Mounting the camera on a tabletop safely:

1. Place the camera on a tabletop **no less than 3 feet away** from your baby's crib.
2. Feed the power cord down the back of the table or use wall clips (not included) to secure the cord away so the baby cannot reach it.
3. Plug in the power cord, check the parent unit to ensure that you are getting a good view of your child and there are no obstructions.



SETTING UP YOUR SYSTEM

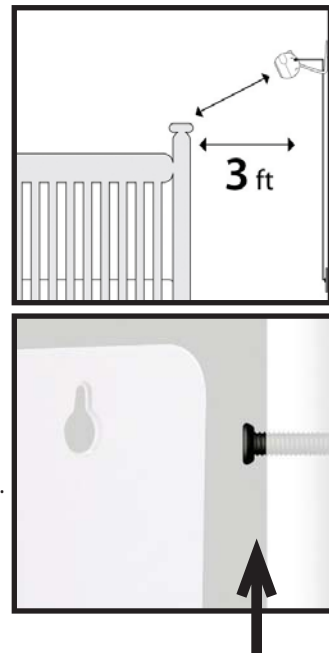
Mounting the camera on a wall safely:

Before drilling the holes, it is important to check the reception and camera positioning in the intended location on the wall. Ensure you are hanging the camera **no less than 3 feet away** from baby's crib.

Note: Baby monitors and cameras with power cords should never be hung on or near the crib as it is a strangulation hazard. Power cords should be kept no less than 3 feet away from the crib and the baby's reach at all times.

ENGLISH

1. Using the Drilling Template (page 30) as a guide, pre-drill two holes in the wall using a 3/16", 4.8mm drill bit.
2. Insert wall anchors (not included) into each hole and tap gently with a hammer until the anchor is flush with the wall.
3. Insert a screw (not included) into each wall anchor and tighten until the screws only stick out about a 1/2 inch.
4. Plug the power cord into the power input of the camera.
5. Locate the wall mounting holes on the bottom of the camera support.
6. Slide the holes over the screws sticking out of the wall.
7. Confirm that the camera is secure, if it is loose you may have to tighten the screws more.
8. Use wall clips (not included) to secure the power cord away from the crib or the baby's reach.
9. Connect the other end of the adapter into an available wall outlet.





SETTING UP YOUR SYSTEM



Switching the Camera ON/OFF

Position the camera to view the area you wish to monitor. Angle the camera lens for best view, by turning it up or down and side to side.



1. Slide the power switch to the right  for the ON position.
2. To turn OFF the camera, slide the power switch  left, back to the OFF position.

ENGLISH

PARENT UNIT OPERATION




Turning the Parent Unit ON/OFF

1. To turn the parent unit ON, press the VIDEO ON/OFF/POWER  button on the top of the parent unit.
2. The LEVANA logo will appear on the screen for a moment followed by the image on the camera.
3. To turn off the unit, **press and hold** the VIDEO ON/OFF/POWER  button again for 1-2 seconds.



Turning the screen ON/OFF

When the parent unit is ON, you can enter power save mode and choose to listen to audio only. This feature helps to conserve your parent unit's battery power and can give you more than 4 hours of battery life.

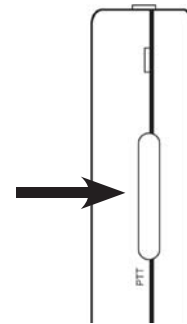
1. Press the VIDEO ON/OFF/POWER  button on the top of the parent unit **once** to turn the screen OFF.
2. Press the MENU button on the side of the parent unit **once** to turn the screen back ON.



Using the Talk to Baby™ Two-Way Intercom

With the simple press of a button you can talk to your child at any time without entering the nursery.

1. To talk, press the Talk button on the left side of the screen and release to listen.
2. To talk when using multiple cameras, select the camera and press the Talk Button, release to listen.
3. When in Quad view, the Talk to Baby™ feature can only be used with camera 1.



PARENT UNIT OPERATION



Turning the Nightlight ON/OFF

You can control the color-changing nightlight from the parent unit, turning it on or off without entering the nursery.

1. Press the MENU button once. Use the navigational arrows on the front of the parent unit to go to the Nightlight icon and press the LEVANA button once to select.
2. Use the navigational arrows to choose the Nightlight ON icon and press the LEVANA button once to select. The nightlight will gently light up the room, changing colors from red, green and blue.
3. To turn off the nightlight, press the MENU button once and go back to the Nightlight icon and press the LEVANA button once to select.
4. Use the navigational arrows to choose the Nightlight OFF icon and press the LEVANA button once to select.



ENGLISH



Selecting a Lullaby

You have a choice of three different lullabies to soothe your baby to sleep. With the parent unit, you can turn lullabies on and off, change the song and adjust the volume from wherever you are in the house.

1. To turn on the lullaby feature, press the MENU button once. Use the navigational arrows to choose the Lullaby icon and press the LEVANA button once to select.
2. Using the navigational arrows, toggle to your choice of lullaby and press the LEVANA button once to make your selection. Your music selection will begin to play.
3. To turn OFF the lullabies, press the MENU button once. Use the navigational arrows to choose the Lullaby icon and press the LEVANA button once to select. Using the navigational arrows, toggle to the lullaby OFF icon and press the LEVANA button once to select.
4. Press the MENU button once to exit the menu screen and return to the main menu.



Note: The main screen will show you which lullaby selection is currently playing: 1, 2 or 3.

PARENT UNIT OPERATION

Adjusting the Lullaby Volume

To increase or decrease the lullaby volume, use the ▲ arrow to **increase** the volume while the lullaby is playing. Use the ▼ arrow to **decrease** the volume while the lullaby is playing.



Setting the Brightness

You have a choice of five different screen brightness settings to choose from.

1. To change the screen brightness, press the MENU button once. Use the navigational arrows to choose the Brightness icon and press the LEVANA button once to select.
2. Using the navigational arrows on the front of the parent unit, toggle to your screen brightness selection; the ☀ icon represents the lowest setting and the ☀ icon represents the brightest setting.
3. Press the LEVANA button once to make your selection and press the MENU button once to exit the menu screen.



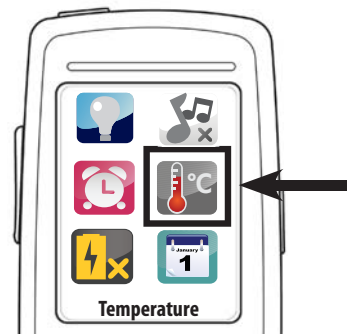
ENGLISH



Setting the Temperature

You can check the temperature in the nursery at any time to ensure your child is comfortable. The camera detects the temperature in the baby's room and displays it on the parent unit. You have a choice of setting the temperature reading to °F or °C.

1. To turn the Temperature mode on, press the MENU button once. Use the navigational arrows to choose the Temperature icon and press the LEVANA button once to select.
2. Using the navigational arrows, toggle to your choice of setting and press the LEVANA button once to make your selection.
3. Press the MENU button once to exit the menu screen and return to the main menu. Your Temperature selection will appear in the bottom left corner of the main screen.

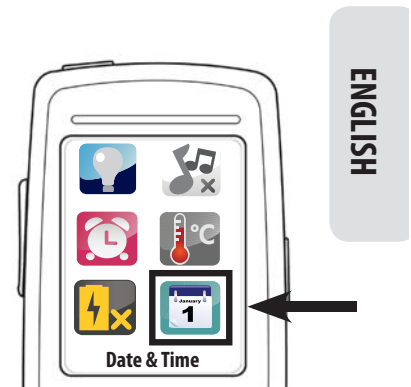


PARENT UNIT OPERATION



Setting the Date and Time

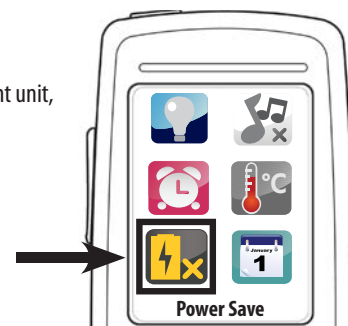
1. To set the Date and Time, press the MENU button once. Use the navigational arrows to choose the Date and Time icon then press the LEVANA button once to select.
2. To adjust the date, use the navigational arrows to toggle to the DATE then press the LEVANA button once to select.
3. Use the ▲▼ navigational arrows to increase/decrease the numbers. Use the ◀▶ navigational arrows to move between MM/DD/YYYY. Press the LEVANA button once to confirm your selection.
4. To adjust the TIME, use the navigational arrows to toggle to the TIME then press the LEVANA button once to select.
5. Use the ▲▼ navigational arrows to increase/decrease the numbers. Use the ◀▶ navigational arrows to move between HH:MM, AM/PM. Press the LEVANA button once to confirm your selection.
6. To display the time on the main screen, use the navigational arrows to toggle to DISPLAY TIME, select ON then press the LEVANA button once to select.
7. Press the MENU button once to exit the menu screen and return to the main menu. The TIME will appear at the top of the main screen.



Using Power Save Mode

Using the Power Save mode turns the screen off but keeps the audio on.

1. Press the MENU button once. Using the navigational arrows on the front of the parent unit, highlight the Power Save icon and press the LEVANA button once to select.
2. The screen can turn off after 15 seconds, 1 minute, or return to the off position. Use the navigational arrows and press the LEVANA button once to select.
3. Press any button to turn the screen back on.



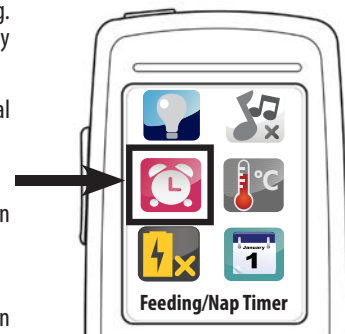
PARENT UNIT OPERATION



Setting the Feeding and Nap Timer

This custom-programmed timer reminds you when your baby should be eating or sleeping. You can set up to 10 separate timers. The time is also displayed on the screen for handy referencing throughout the day.

1. To set the Feeding and Nap Timer, press the MENU button once. Use the navigational arrows to choose the Feeding/Nap Timer icon then press the LEVANA button once to select.
2. Use the navigational arrows to toggle to one of the timers then press the LEVANA button once to select.
3. Use the ▲▼ navigational arrows to increase/decrease the time. Use the ◀▶ navigational arrows to move between HH:MM, AM/PM and to turn the timer on (🔔) and off (🚫). Press the LEVANA button once to confirm your selection.
4. To set multiple timers, simply repeat steps 2 and 3.
5. Press the MENU button once to exit the menu screen and return to the main screen. The 🔔 icon will appear at the top of the main screen when the timer is **ON**.
6. When the timer expires, the parent unit will beep until you press any button to turn it off.



ENGLISH

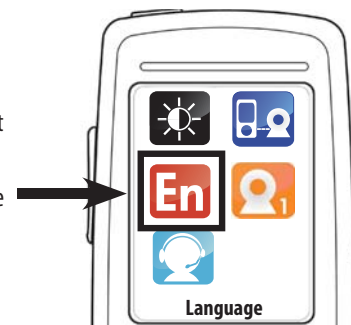
Note: The timer will repeat at the same time EVERYDAY until you turn it off manually in the Feeding/Nap timer menu.



Changing the Language

You have a choice of three different languages; English, French and Spanish. The parent unit is set automatically to English.

1. Press the MENU button once. Using the navigational arrows on the front of the parent unit, highlight the Language icon and press the LEVANA button once to select.
2. Using the the navigational arrows, toggle to your choice of Language and press the LEVANA button once to make your selection.
3. Press the MENU button once to exit the menu screen and return to the main menu.



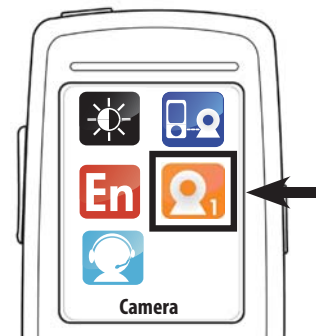
PARENT UNIT OPERATION



Selecting the Camera View

If you have more than one camera, you have many monitoring options; Single View, Quad View and Sequence Mode.

1. Press the MENU button once. Use the navigational arrows to choose the Camera icon then press the LEVANA button once to select.
 2. Use the navigational arrows to select one of the options below and press the LEVANA button once to select. Press the MENU button to exit the menu screen.
- **Single view** : Allows you to view one camera at a time.
 - **Quad view** : Allows you to view all paired cameras at the same time.
 - **Sequence Mode** : Allows you to view all paired cameras one at a time, in sequence.



ENGLISH



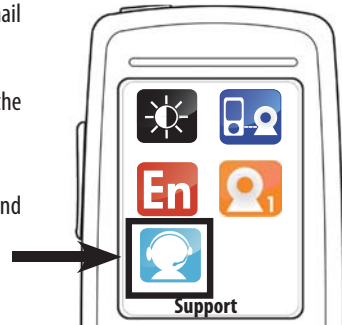
PARENT UNIT OPERATION



Contacting Customer Support

Our customer support team can be reached by phone 24 hours a day, 7 days a week, or by email and live web chat. You'll always have access to an expert in English, Spanish and French.

1. To access the Support information anytime, press the MENU button once. Use the navigational arrows to choose the Support icon then press the LEVANA button once to select.
2. This will take you to the screen which displays our telephone number, email address and website.
3. Press the MENU button to exit the menu screen and return to the main screen.



ENGLISH



Email:
support@myLEVANA.com

Online live web chat:
Visit **www.myLEVANA.com**



Telephone:
1.866.946.7828



TROUBLESHOOTING

ISSUE	POSSIBLE SOLUTION
Equipment does not function	<ul style="list-style-type: none"> • Camera and/or parent unit are not switched on • The battery is drained • The power adapters are not connected
No reception	<ul style="list-style-type: none"> • Camera and parent unit are not paired • Camera is too far away from parent unit • Wrong camera channel is selected (manufacturer has preset and paired the included camera to camera channel 1)
Reception Interference (static)	<ul style="list-style-type: none"> • The camera and parent unit are too far apart • The battery power is too low • Other electronic devices are interfering with the signal • The camera or parent unit are placed near too many metal objects
Feedback (screeching, static)	<ul style="list-style-type: none"> • The camera and parent unit are too close together • The volume on the parent unit is set too high
Picture, no sound	<ul style="list-style-type: none"> • Volume setting is too low
Picture is black and white	<ul style="list-style-type: none"> • Night vision LEDs are ON; Increase the amount of light in the room being monitored
The rechargeable battery will not charge	<ul style="list-style-type: none"> • The power adapter is not connected to the parent unit • Battery pack is not seated properly inside the battery compartment

ENGLISH

Maintenance

- Clean the surfaces of the camera and parent unit with a soft, lint-free cloth
- If the units become dirty, please use a lightly damp cloth to wipe surfaces, taking care to not allow water into any openings
- Never use cleaning agents or solvents

SPECIFICATIONS

Parent Unit Specifications

Monitor Type	TFT LCD
Screen Size	2.4"
Resolution	320 x 240
Frame Rate	Up to 30 FPS
Frequency	2.4GHz
Technology	Digital FHSS
No. of hop/sec	1,000
No. of hopping channels	33
Channel bandwidth	2 MHz
Data Rate	2 Mbps
Transmission Power	+16 dBm
Transmission Range	500ft
Optimum Transmission Range	150ft
Speaker	Yes
Microphone	Yes
Battery Operable	Yes, Rechargeable Li-Ion
Battery Life	4 hrs
Battery Low Warning	Yes
Housing Material	ABS Plastic
Power Adapter Input	DV 5V / 600mA
Power Adapter	110~230V 0.1A
Operating Temperature	0-45°C
Dimensions	4.75x2.25x0.75"
Weight	0.3lbs

ENGLISH

SPECIFICATIONS

Camera Specifications

Image sensor	CMOS
Resolution	1600 x 1200
Night Vision	10ft
Number of IR LEDs	10
Battery Operable	No
Viewing Angle	60°
Focal Length	2.8mm
Optimal Focal Distance	2-10ft
Transmission Range	500ft
Optimum Transmission Range	150ft
Microphone	Yes
Speaker	Yes
Housing Material	ABS Plastic
Wall Mountable	Yes
Power Adapter Input	DV 5V / 600mA
Power Adapter	110~230V 0.1A
Operating Temperature	0-45°C
Dimensions	4x2.75x2.5"
Weight	0.2lbs

ENGLISH



FCC STATEMENT

Warning: Any changes or modifications not expressly approved by the grantee of this device could void the user's authority to operate the device.

FCC Notice

This device complies with Part 15, subpart C, of the FCC Rules. Operation is subject to the following two conditions: (1) this device may not cause harmful interference, and (2) this device must accept any interference received, including interference that may cause undesired operation.

The manufacturer is not responsible for any radio or TV interference caused by unauthorized modifications to this equipment. Such modifications could void the user's authority to operate the equipment.

However, it is imperative that the user follows the guidelines in this manual to avoid improper usage which may result in damage to the unit, electrical shock and fire hazard injury. In order to improve the features, functions, and quality of this product, the specifications are subject to change without notice from time to time.

Caution: To maintain compliance with the FCC's RF exposure guidelines, place the camera at least 20cm (7.87in) from nearby persons. The video monitor has been tested and meets the FCC RF exposure guidelines when used with the belt clip supplied with or designated for this product. Use of other accessories may not ensure compliance with FCC RF exposure guidelines.

Canada/IC Notice

This device complies with Industry Canada licence-exempt RSS standard(s). Operation is subject to the following two conditions: (1) this device may not cause interference, and (2) this device must accept any interference, including interference that may cause undesired operation of the device.

Le présent appareil est conforme aux CNR d'Industrie Canada applicables aux appareils radio exempts de licence. L'exploitation est autorisée aux deux conditions suivantes: (1) l'appareil ne doit pas produire de brouillage, et (2) l'utilisateur de l'appareil doit accepter tout brouillage radioélectrique subi, même si le brouillage est susceptible d'en compromettre le fonctionnement.

CE 1313 The CWD Baby monitor series model Era is in compliance with the essential requirements and other relevant provisions of Directive 1999/5/EC.

SAFETY INSTRUCTIONS

Read and Keep Instructions: All the safety and operating instructions should be read before the video baby monitor is operated.

This product cannot replace responsible adult supervision.

Strangulation Hazard: Children can become entangled in cords. Power cords should be kept more than 3 feet away from the crib and baby's reach at all times. Baby monitors with power cords should never be hung on or near the crib.

SAFETY INSTRUCTIONS

Water and Moisture: This product is designed for indoor use only. The unit should not be exposed to rain, moisture, dripping or splashing. No objects filled with liquid should be placed on top of, or beside the product, such as a glass or vase. This item should not be used near water.

Non-Use Periods: Always unplug the AC adapters from the wall outlets during long periods of non-use.

Ventilation: This baby monitor should not be used on a bed, sofa, rug or similar surface that may block the ventilation openings, or be placed in an enclosed area, such as a bookcase or drawer that may impede air flow.

Keep Away from Sources of Heat: This unit should not be exposed to direct heat sources such as a candle, fireplace, radiator, heat register, stove or other appliance that emits heat. The unit should not be left in direct sunlight.

Power Source: This unit should only be used with the AC power adapters included in this package (rated 6V 800mA)

Damage Requiring Service: This unit should be serviced by qualified personnel only when:

- a. Objects have fallen or liquid has been spilled into the product
- b. The units have been exposed to rain
- c. The units do not appear to operate normally or exhibits a distinct change in performance
- d. The units have been dropped or the enclosure damaged

Caution: This product cannot replace responsible adult supervision of a child.

STATEMENT ON REGULATION

These units are designed to provide reasonable protection against harmful interference in a residential installation. This equipment generates, uses and can radiate radio frequency energy and if not installed and used in accordance with the instructions, may cause harmful interference to radio communications. However, there is no guarantee that interference will not occur in a particular installation. If this equipment does cause harmful interference to radio or television reception, which can be determined by turning the equipment off and on, the user is encouraged to try to correct the interference by one or more of the following measures:

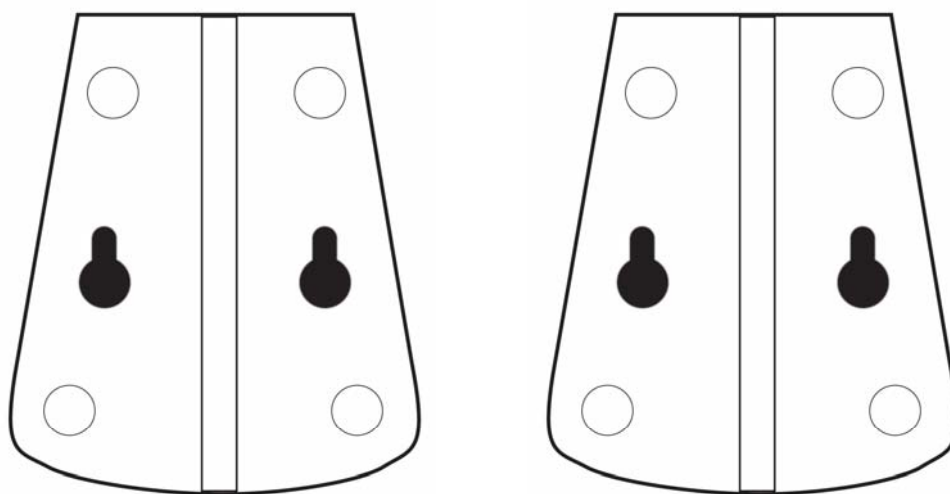
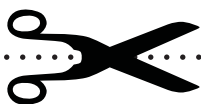
- Reorient or relocate the receiving antenna
- Increase the separation between the equipment and receiver
- Connect the equipment into an outlet on a circuit different from that to which the receiver is connected
- Consult the dealer or an experienced radio/TV technician for help

Operation with non-approved equipment or unshielded cables is likely to result in interference to radio or TV reception. The user is cautioned that changes and modifications made to the equipment without the approval of manufacturer could void the user's authority to operate this equipment.

DRILLING TEMPLATE

DRILLING TEMPLATE / GABARIT DE PERÇAGE / SPANISH

- To wall mount the camera, pre-drill two holes using a 3/16", 4.8mm drill bit and the template below. Insert wall anchors into holes then insert a screw into each wall anchor. Tighten until the screws only stick out about a 1/2".
- Pour le montage mural de la caméra, percez deux trous d'avance à l'aide d'un foret de 3/16 po, 4,8 mm utilisant le gabarit de perçage ci-dessous. Insérez les chevilles dans les trous ensuite insérez une vis dans chaque cheville. Serrez les vis jusqu'à ce qu'elles dépassent seulement par environ 1/2 po.
- Para instalar la cámara en la pared, realice las marcas de dos orificios en la pared, que luego perforará, utilizando un taladro con una broca de 3/16", 4.8 mm y la plantilla que se muestra abajo. Inserte anclajes de pared en los orificios; luego, inserte un tornillo en cada anclaje de pared. Ajuste los tornillos hasta que sobresalgan solo 1/2".





Do **More** Knowing
Your Child Is **Safe**^{TM/MC}

Please visit www.myLEVANA.com for:

Warranty information, Product Support, Contact information, User
Manual Downloads, and much more!

