

**Test Report No. S09EEC00652**  
**dated 31 Mar 2009**

**Note:** This report is issued subject to TÜV SÜD PSB's "Terms and Conditions Governing Technical Services".  
The terms and conditions governing the issue of this report are set out as attached within this report.



PSB Singapore

**Choose certainty.**  
**Add value.**

**COMPLIANCE REPORT ON TESTING IN ACCORDANCE WITH  
SAR (SPECIFIC ABSORPTION RATE) REQUIREMENTS**

**Supplement C (Edition 01-01)**  
**FCC OET Bulletin 65 (Edition 97-01)**

OF A Notebook  
[Model:PC-88012N]

**TEST FACILITY** TÜV SÜD PSB Pte Ltd,  
Electrical & Electronics Centre (EEC), Product Services,  
1 Science Park Drive, Singapore 118221

**PREPARED FOR** Wanlida Group Co., Ltd.  
No. 618 Jiahe Road  
Xiamen Fujian, China

Tel : (+86) 596-7653999-826 Fax : (+86) 596-7662886

**QUOTATION NUMBER** Q09EEC00880

**JOB NUMBER** S09EEC00652

**TEST PERIOD** 23-Mar-2009 – 31-Mar-2009

**PREPARED BY**

Stanley Siah  
Associate Engineer

**APPROVED BY**

Daniel Yeo  
Assistant Vice President



Laboratory:  
TÜV SÜD PSB Pte. Ltd.  
Testing Services  
No.1 Science Park Drive  
Singapore 118221

Phone : +65-6885 1333  
Fax : +65-6776 8670  
E-mail: testing@tuv-sud-psb.sg  
www.tuv-sud-psb.sg  
Co. Reg : 199002667R

Regional Head Office:  
TÜV SÜD Asia Pacific Pte. Ltd.  
3 Science Park Drive, #04-01/05  
The Franklin, Singapore 118223  
**TUV®**



LA-2007-0380-A  
LA-2007-0380-A-1  
LA-2007-0381-F  
LA-2007-0382-B  
LA-2007-0383-G  
LA-2007-0384-G  
LA-2007-0385-E  
LA-2007-0386-C

The results reported herein have been performed in accordance with the laboratory's terms of accreditation under the Singapore Accreditation Council - Singapore Laboratory Accreditation Scheme. Tests/Calibrations marked "Not SAC-SINGLAS Accredited" in this Report are not included in the SAC-SINGLAS Accreditation Schedule for our laboratory.



---

**TABLE OF CONTENTS**

TEST SUMMARY

PRODUCT DESCRIPTION

TEST RESULTS

ANNEX A	-	TEST INSTRUMENTATION & GENERAL PROCEDURES
ANNEX B	-	EUT PHOTOGRAPHS / DIAGRAMS Test Setup EUT Photographs
ANNEX C	-	TISSUE SIMULANT DATA SHEETS
ANNEX D	-	SAR VALIDATION RESULTS
ANNEX E	-	MEASUREMENT UNCERTAINTY
ANNEX F	-	SAR PROBE CALIBRATION CERTIFICATES
ANNEX G	-	REFERENCES



**TEST SUMMARY**

The product was tested in accordance with the following standards.

**Test Results Summary**

Test Standards	Description	Pass / Fail
<ul style="list-style-type: none"><li>Supplement C (Edition 01-01) to FCC OET Bulletin 65 (Edition 97-01)</li><li>ANSI/IEEE Standard C95.1-1993</li></ul>	SAR Measurement (Wi-Fi 2450MHz) Body worn Configuration Only	Pass *

1. The worst-case SAR value was found to be **0.082W/kg** which is lower than the maximum limit of 1.60 W/kg, over 1g of tissue. The device conforms to the requirements of the standard when the maximum measured SAR value is less than or equal to the limit.

\* Based on spatial peak uncontrolled exposure / general population level:  
Head: 1.60 W/kg, over 1g of tissue.  
Body: 1.60 W/kg, over 1g of tissue.

**Modifications**

No modifications were made.



**DEVICE DESCRIPTION**

**DEVICE DESCRIPTION**

Description	The Equipment Under Test (EUT) is a <b>Wi-Fi Notebook</b>
Device Category	Portable Device
Exposure Environment	General Population/Uncontrolled exposure
Test Device Type	Production Unit
Brand Name	Malata
Serial Numbers	Nil
Model	PC-88012N
FCC ID	SMFPC88012N

**DEVICE OPERATING CONFIGURATION**

Operating Frequencies	<u>Wi-Fi mode</u> Channel 1 (2412Mhz) Channel 2 (2442Mhz) Channel 3 (2462Mhz)
Operating Temperature Tolerance	(0 ~ 80) Degree Celsius
Operating Voltage Tolerance	(3.3 ±5%) Volt DC
Continuous Transmission Tolerance	The EUT shall cause no problem after transmitting for 4 hours.
Rated Output Power	16dBm ± 1.5dBm, Maximum (802.11b) 13dBm ± 1.5dBm, Maximum (802.11g)
Antenna Type	PIFA Integrated Antenna
EUT Crest Factor	1.0
Input Power	AC 100~240V, DC 12V, Rechargeable Battery
Accessories	Power adapter

**MANUFACTURER**

Manufacturer Address	Wanlida Group Co., Ltd. No. 618 Jiahe Road Xiamen Fujian, China
DID	(+86) 596-7653999-826
Fax	(+86) 596-7662886

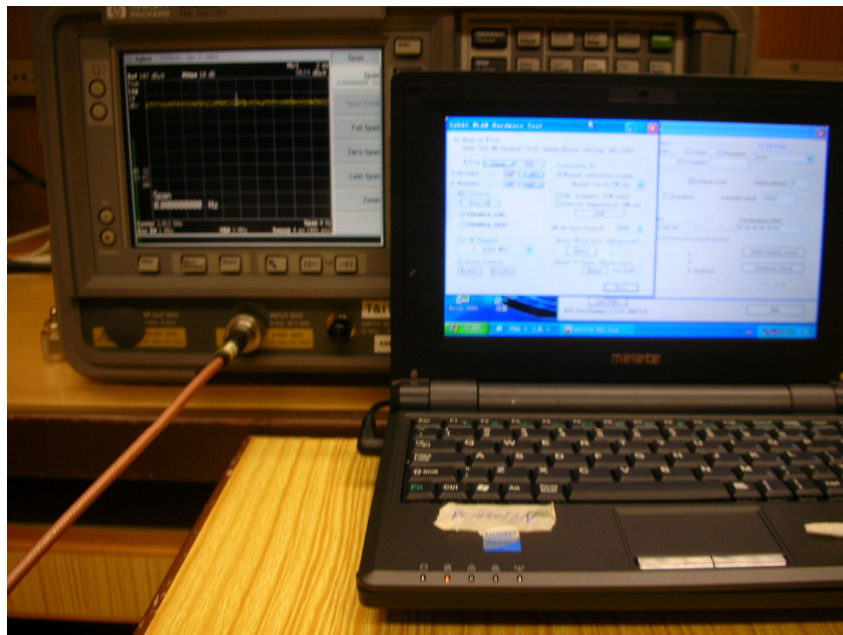
---

## DEVICE OPERATING CONDITION

### DEVICE OPERATING CONDITION

The EUT has only one single transmit antenna. SAR was evaluated with the radio transmitting at the 6Mbps and 11Mbps data rate for each mode based on the measured conducted peak power.

The EUT was put into exercised by using software control operating at the following frequencies 2.412GHz, 2.442GHz and 2.462GHz (lowest, middle and highest channel). The EUT was set to maximum output power level transmission (greater than 90% on-time), this was confirm with a spectrum analyser set to zero span as shown below set up.



### TEMPERATURE AND HUMIDITY

#### 802.11b/g (Body)

Ambient Temperature:  $24 \pm 1^{\circ} \text{C}$   
Tissue Temperature:  $24 \pm 1^{\circ} \text{C}$   
Humidity: 54% to 59%



**TEST RESULTS**

The measurement results were obtained with the EUT tested in the conditions described in this report (Annex A).

**Table 1 - Body Worn Position SAR Test Results – (Wi-Fi) 6Mbps**

Phantom Configuration	Device Test Positions	Antenna Position	SAR (W/kg), average over 1g Tissue Device Test Channel & Frequency		
			Channel: 1 2412MHz	Channel: 2 2442MHz	Channel: 3 2462MHz
Flat Phantom	EUT Closed (under arm) Touched Phantom	fixed	0.058	0.030	0.063
Flat Phantom	EUT Lap Touched Phantom	fixed	0.039	0.043	0.046
Output Peak Power (dBm) Before Test			16.94	16.86	16.62
Output Peak Power (dBm) After Test			16.92	16.85	16.61

**Table 2 - Body Worn Position SAR Test Results – (Wi-Fi) 11Mbps**

Phantom Configuration	Device Test Positions	Antenna Position	SAR (W/kg), average over 1g Tissue Device Test Channel & Frequency		
			Channel: 1 2412MHz	Channel: 2 2442MHz	Channel: 3 2462MHz
Flat Phantom	EUT Closed (under arm) Touched Phantom	fixed	0.062	0.039	0.046
Flat Phantom	EUT Lap Touched Phantom	fixed	0.073	0.082	0.012
Output Peak Power (dBm) Before Test			16.93	16.67	16.60
Output Peak Power (dBm) After Test			16.92	16.67	16.60



Comment:

Since the SAR measurements values are very low and power distribution for Z-plot does look erratic which usually in the case for very low SAR value (noise floor <0.01mW/g) which the above test SAR results had shown. For SAR value >0.1mW/g, the Z-plot will be more obvious with a logarithmic decay unlike the Z-plot might not show this decay in the obtained results of the device which is close to the floor noise.

Remarks:

1. All modes of operations were investigated and the worst-case SAR levels are reported.
2. A fully charged **Li-Polymer** Battery Description **DC 7.4V, 4600mAh** was used for each mode of operation.
3. For the peak power measurement across all the data rates are listed in page 32 and 33 of this report.
4. For **Wi-Fi 6Mbps** the worst-case SAR value was found to be **0.063W/Kg** (over a 1g tissue) at **Channel 3** which is lower than the maximum limit of 1.60 W/Kg, please refer to the above table.
5. For **Wi-Fi 11Mbps**, the worst-case SAR value was found to be **0.082W/Kg** (over a 1g tissue) at **Channel 2** which is lower than the maximum limit of 1.60 W/Kg, please refer to the above table.
6. The SAR limit of 1.60W/Kg (Spatial Peak level for Uncontrolled Exposure / General Population) is based on the Test Standards:
  - a) Supplement C (Edition 01-01) to FCC OET Bulletin 65 (Edition 97-01)
  - b) ANSI/IEEE Standard C95.1-1993
7. Others consideration used for the above test;
  - i) KDB 248227 dated May 2007
  - ii) KDB 447498 D01 dated Jan 2009



## TEST RESULTS

---

**Ambient Temperature:**  $24 \pm 1^{\circ}\text{C}$   
**Tissue Temperature:**  $24 \pm 1^{\circ}\text{C}$   
**Humidity:** 54% to 59%

Test Laboratory: TUV SUD PSB PTE LTD.

Date/Time: 3/31/2009 11:07:18 AM

File Name: [EUT Lap\\_Ch 1\\_2412MHz\\_6mbps.da4](#)

Program Name: EUT Lap\_Ch 1\_2412MHz\_Data 1.da4

Phantom section: Flat Section

DUT: Notebook

Communication System: 2450 Mhz

Frequency: 2412 MHz

Duty Cycle: 1:1

Medium: Body 2450 MHz Medium parameters used:  $f = 2450\text{ MHz}$ ;  $\sigma = 1.97\text{ mho/m}$ ;  $\epsilon_r = 52.1$ ;  $\rho = 1000\text{ kg/m}^3$

### DASY4 Configuration:

Electronics: DAE4 Sn627                      Calibrated: 6/14/2007

Phantom: SAM 12                                Measurement SW: DASY4, V4.7 Build 80

Probe: EX3DV4 - SN3541                      ConvF(7.07, 7.07, 7.07)                      Calibrated: 7/13/2007

Post processing SW: SEMCAD, V1.8 Build 186

Sensor-Surface: 4mm (Mechanical Surface Detection)

**EUT Rear\_Ch 1\_2412MHz\_Data 1/Area Scan (14x17x1):** Measurement grid:

$dx=5\text{mm}$ ,  $dy=5\text{mm}$

Maximum value of SAR (measured) = 0.037 mW/g

**EUT Rear\_Ch 1\_2412MHz\_Data 1/Zoom Scan (7x7x7)/Cube 0:** Measurement

grid:  $dx=5\text{mm}$ ,  $dy=5\text{mm}$ ,  $dz=5\text{mm}$

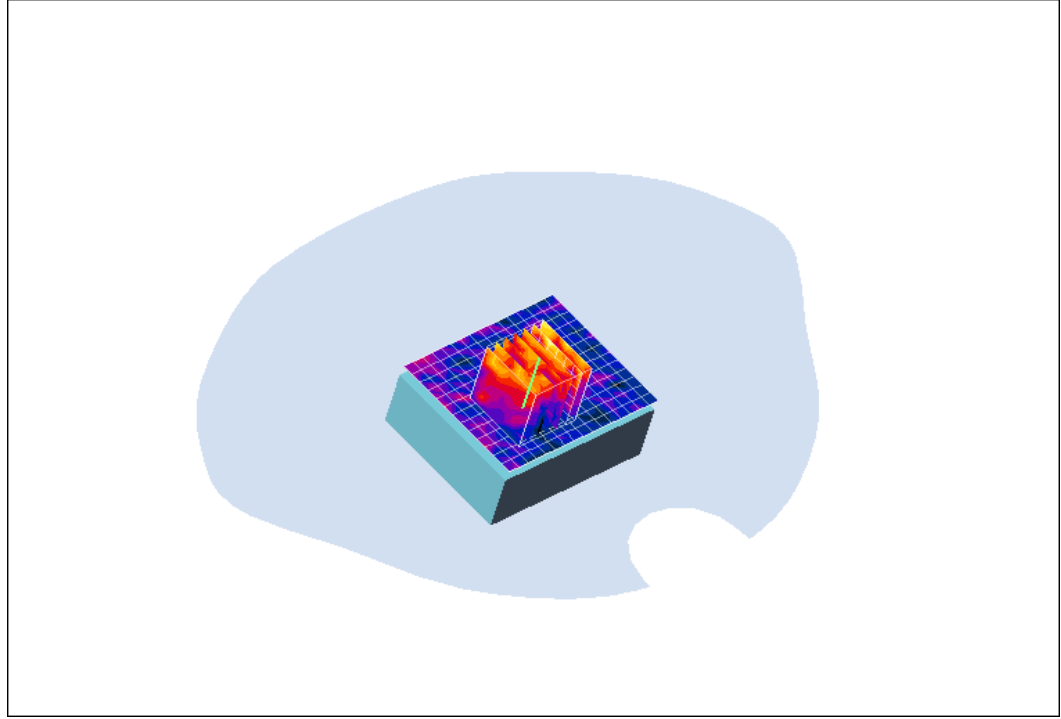
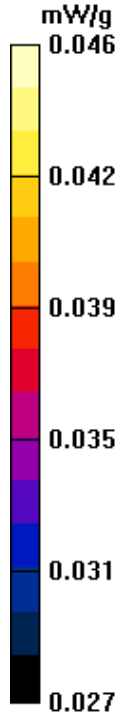
Reference Value = 4.05 V/m; Power Drift = 0.063 dB

Peak SAR (extrapolated) = 0.046 W/kg

**SAR(1 g) = 0.039 mW/g; SAR(10 g) = 0.036 mW/g**

Maximum value of SAR (measured) = 0.046 mW/g







## TEST RESULTS

---

**Ambient Temperature:**  $24 \pm 1^{\circ}\text{C}$   
**Tissue Temperature:**  $24 \pm 1^{\circ}\text{C}$   
**Humidity:** 54% to 59%

Test Laboratory: TUV SUD PSB PTE LTD.

Date/Time: 3/31/2009 12:07:06 PM

File Name: [EUT Lap\\_Ch 2\\_2442MHz\\_6mbps.da4](#)

Program Name: EUT Lap\_Ch 2\_2442MHz\_Data 1.da4

Phantom section: Flat Section

DUT: Notebook

Communication System: 2450 Mhz

Frequency: 2442 MHz

Duty Cycle: 1:1

Medium: Body 2450 MHz Medium parameters used:  $f = 2450\text{ MHz}$ ;  $\sigma = 1.97\text{ mho/m}$ ;  $\epsilon_r = 52.1$ ;  $\rho = 1000\text{ kg/m}^3$

### DASY4 Configuration:

Electronics: DAE4 Sn627                      Calibrated: 6/14/2007

Phantom: SAM 12                              Measurement SW: DASY4, V4.7 Build 80

Probe: EX3DV4 - SN3541                      ConvF(7.07, 7.07, 7.07)                      Calibrated: 7/13/2007

Post processing SW: SEMCAD, V1.8 Build 186

Sensor-Surface: 4mm (Mechanical Surface Detection)

**EUT Rear\_Ch 2\_2442MHz\_Data 1/Area Scan (13x18x1):** Measurement grid:

$dx=5\text{mm}$ ,  $dy=5\text{mm}$

Maximum value of SAR (measured) = 0.043 mW/g

**EUT Rear\_Ch 2\_2442MHz\_Data 1/Zoom Scan (7x7x7)/Cube 0:** Measurement

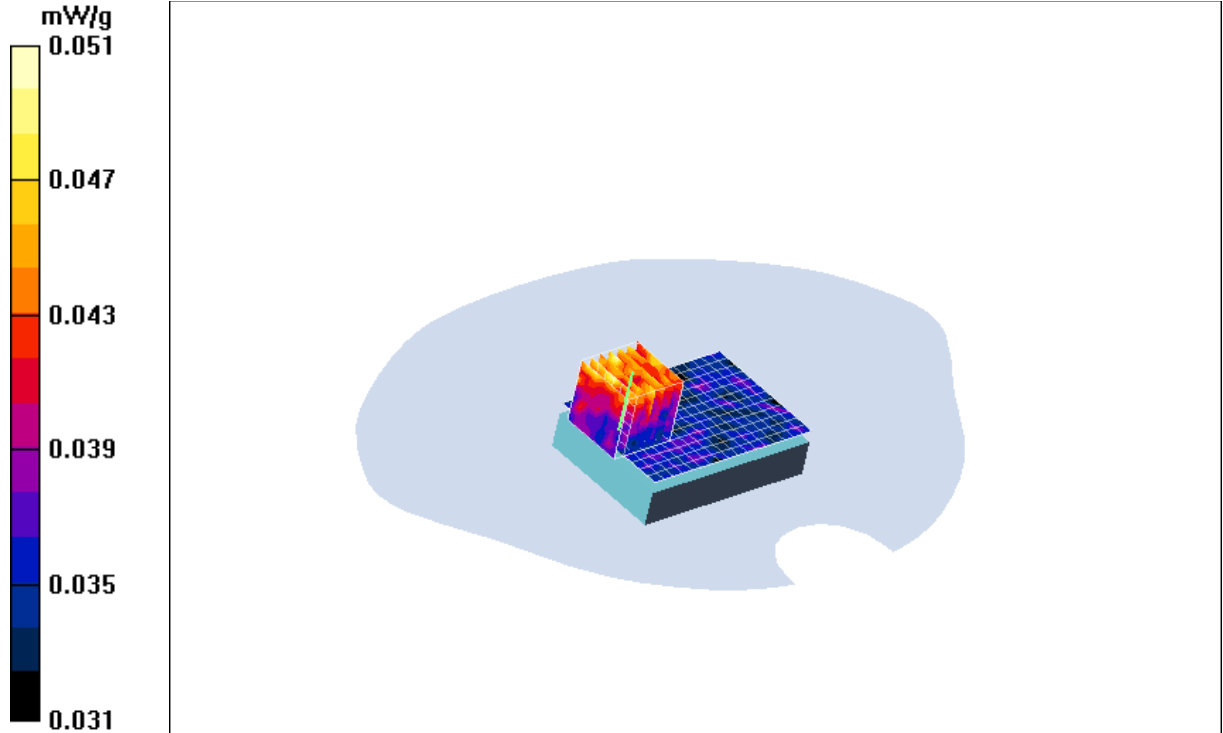
grid:  $dx=5\text{mm}$ ,  $dy=5\text{mm}$ ,  $dz=5\text{mm}$

Reference Value = 4.33 V/m; Power Drift = 0.177 dB

Peak SAR (extrapolated) = 0.051 W/kg

**SAR(1 g) = 0.043 mW/g; SAR(10 g) = 0.041 mW/g**

Maximum value of SAR (measured) = 0.051 mW/g





## TEST RESULTS

---

**Ambient Temperature:**  $24 \pm 1^{\circ}\text{C}$   
**Tissue Temperature:**  $24 \pm 1^{\circ}\text{C}$   
**Humidity:** 54% to 59%

Test Laboratory: TUV SUD PSB PTE LTD.

Date/Time: 3/31/2009 1:50:40 PM

File Name: [EUT Lap\\_Ch 3\\_2462MHz\\_6mbps.da4](#)

Program Name: EUT Lap\_Ch 3\_2462MHz\_Data 1.da4

Phantom section: Flat Section

DUT: Notebook

Communication System: 2450 Mhz

Frequency: 2462 MHz

Duty Cycle: 1:1

Medium: Body 2450 MHz Medium parameters used:  $f = 2450\text{ MHz}$ ;  $\sigma = 1.97\text{ mho/m}$ ;  $\epsilon_r = 52.1$ ;  $\rho = 1000\text{ kg/m}^3$

### DASY4 Configuration:

Electronics: DAE4 Sn627                      Calibrated: 6/14/2007

Phantom: SAM 12                              Measurement SW: DASY4, V4.7 Build 80

Probe: EX3DV4 - SN3541                      ConvF(7.07, 7.07, 7.07)                      Calibrated: 7/13/2007

Post processing SW: SEMCAD, V1.8 Build 186

Sensor-Surface: 4mm (Mechanical Surface Detection)

**EUT Lap\_Ch 3\_2462MHz\_Data 1/Area Scan (13x18x1):** Measurement grid:

$dx=5\text{mm}$ ,  $dy=5\text{mm}$

Maximum value of SAR (measured) = 0.043 mW/g

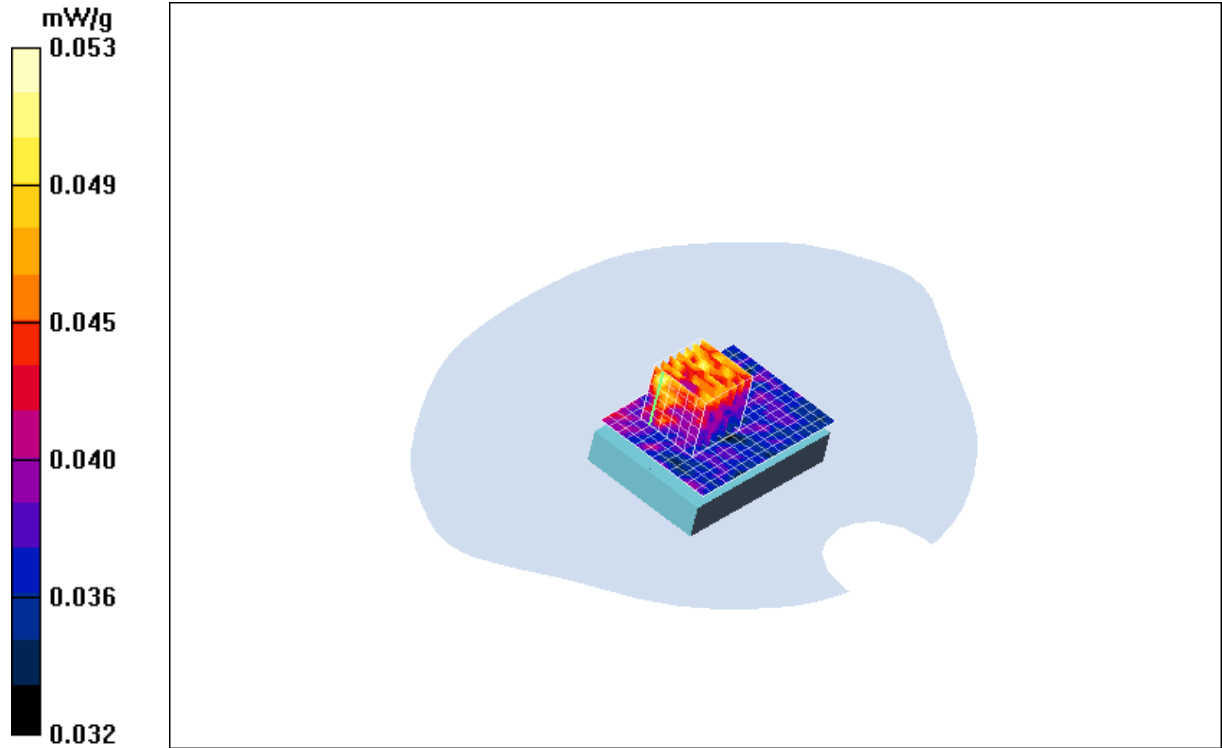
**EUT Lap\_Ch 3\_2462MHz\_Data 1/Zoom Scan (7x7x7)/Cube 0:** Measurement grid:  $dx=5\text{mm}$ ,  $dy=5\text{mm}$ ,  $dz=5\text{mm}$

Reference Value = 4.18 V/m; Power Drift = 0.555 dB

Peak SAR (extrapolated) = 0.062 W/kg

**SAR(1 g) = 0.046 mW/g; SAR(10 g) = 0.042 mW/g**

Maximum value of SAR (measured) = 0.053 mW/g





## TEST RESULTS

---

**Ambient Temperature:**  $24 \pm 1^{\circ}\text{C}$   
**Tissue Temperature:**  $24 \pm 1^{\circ}\text{C}$   
**Humidity:** 54% to 59%

Test Laboratory: TUV SUD PSB PTE LTD.

Date/Time: 3/28/2009 11:01:40 AM

File Name: [EUT Closed\\_Ch 1\\_2412MHz\\_6mbps.da4](#)

Program Name: EUT Closed\_Ch 1\_2412MHz\_Data 1.da4

Phantom section: Flat Section

DUT: Notebook

Communication System: 2450 Mhz

Frequency: 2412 MHz

Duty Cycle: 1:1

Medium: Body 2450 MHz Medium parameters used:  $f = 2450\text{ MHz}$ ;  $\sigma = 1.97\text{ mho/m}$ ;  $\epsilon_r = 52.1$ ;  $\rho = 1000\text{ kg/m}^3$

### DASY4 Configuration:

Electronics: DAE4 Sn627                      Calibrated: 6/14/2007

Phantom: SAM 12                              Measurement SW: DASY4, V4.7 Build 80

Probe: EX3DV4 - SN3541                      ConvF(7.07, 7.07, 7.07)                      Calibrated: 7/13/2007

Post processing SW: SEMCAD, V1.8 Build 186

Sensor-Surface: 4mm (Mechanical Surface Detection)

**EUT Front\_Ch 1\_2412MHz\_Data 1/Area Scan (11x41x1):** Measurement grid:

$dx=5\text{mm}$ ,  $dy=5\text{mm}$

Maximum value of SAR (measured) = 0.061 mW/g

**EUT Front\_Ch 1\_2412MHz\_Data 1/Zoom Scan (7x7x7)/Cube 0:** Measurement

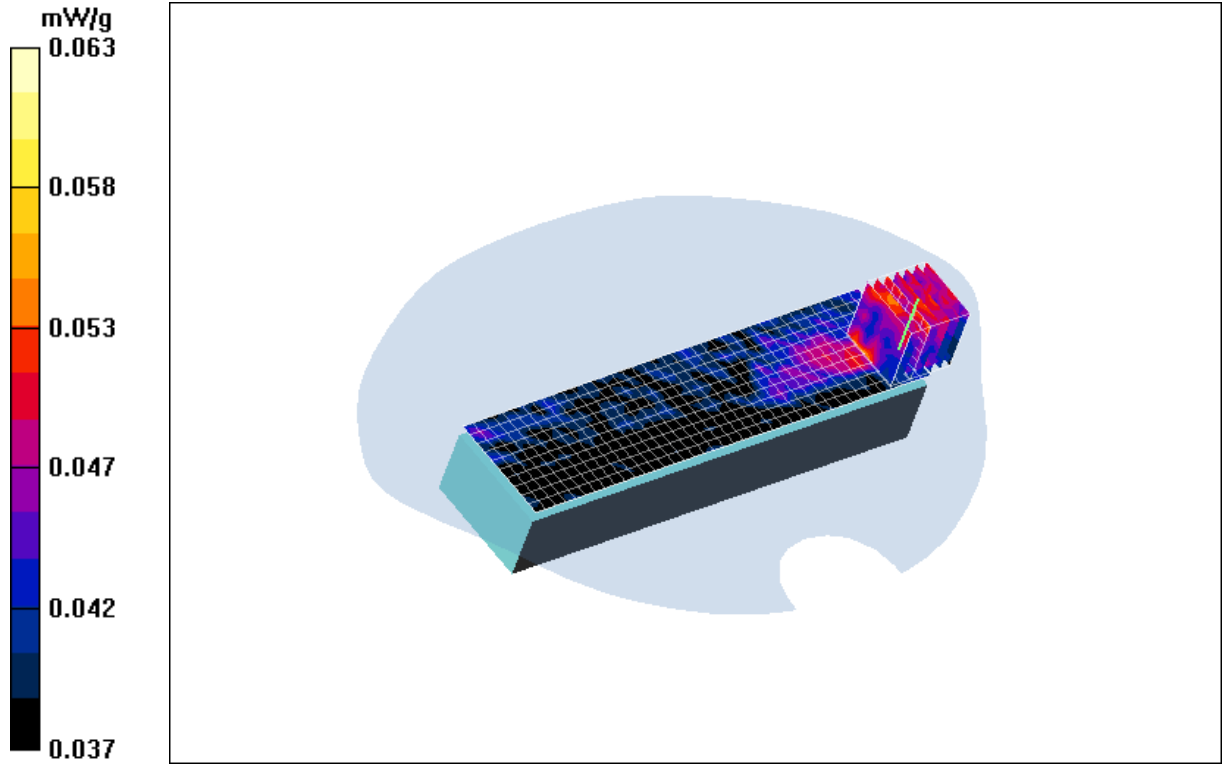
grid:  $dx=5\text{mm}$ ,  $dy=5\text{mm}$ ,  $dz=5\text{mm}$

Reference Value = 4.33 V/m; Power Drift = 0.496 dB

Peak SAR (extrapolated) = 0.079 W/kg

**SAR(1 g) = 0.058 mW/g; SAR(10 g) = 0.050 mW/g**

Maximum value of SAR (measured) = 0.063 mW/g





## TEST RESULTS

---

**Ambient Temperature:**  $24 \pm 1^{\circ}\text{C}$   
**Tissue Temperature:**  $24 \pm 1^{\circ}\text{C}$   
**Humidity:** 54% to 59%

Test Laboratory: TUV SUD PSB PTE LTD.

Date/Time: 3/28/2009 2:49:33 PM

File Name: [EUT Closed\\_Ch 2\\_2442MHz\\_6mbps.da4](#)

Program Name: EUT closed \_Ch 2\_2442MHz\_Data 1.da4

Phantom section: Flat Section

DUT: Notebook

Communication System: 2450 Mhz

Frequency: 2442 MHz

Duty Cycle: 1:1

Medium: Body 2450 MHz Medium parameters used:  $f = 2450\text{ MHz}$ ;  $\sigma = 1.97\text{ mho/m}$ ;  $\epsilon_r = 52.1$ ;  $\rho = 1000\text{ kg/m}^3$

### DASY4 Configuration:

Electronics: DAE4 Sn627                      Calibrated: 6/14/2007

Phantom: SAM 12                              Measurement SW: DASY4, V4.7 Build 80

Probe: EX3DV4 - SN3541                      ConvF(7.07, 7.07, 7.07)                      Calibrated: 7/13/2007

Post processing SW: SEMCAD, V1.8 Build 186

Sensor-Surface: 4mm (Mechanical Surface Detection)

**EUT closed\_Ch 2\_2442MHz\_Data 1/Area Scan (11x41x1):** Measurement grid:  
dx=5mm, dy=5mm

Maximum value of SAR (measured) = 0.031 mW/g

**EUT closed\_Ch 2\_2442MHz\_Data 1/Zoom Scan (7x7x7)/Cube 0:** Measurement  
grid: dx=5mm, dy=5mm, dz=5mm

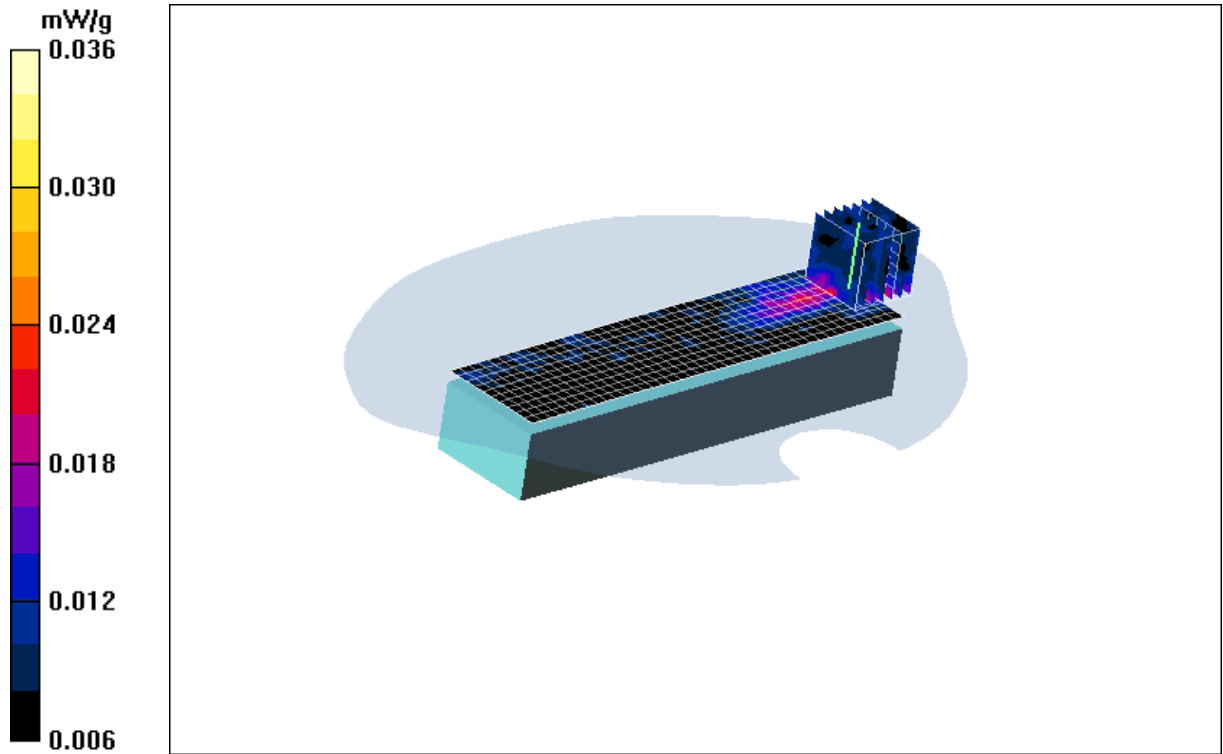
Reference Value = 1.86 V/m; Power Drift = 0.867 dB

Peak SAR (extrapolated) = 0.122 W/kg

**SAR(1 g) = 0.030 mW/g; SAR(10 g) = 0.018 mW/g**

Maximum value of SAR (measured) = 0.036 mW/g







## TEST RESULTS

---

**Ambient Temperature:**  $24 \pm 1^{\circ}\text{C}$   
**Tissue Temperature:**  $24 \pm 1^{\circ}\text{C}$   
**Humidity:** 54% to 59%

Test Laboratory: TUV SUD PSB PTE LTD.

Date/Time: 3/29/2009 8:51:55 AM

File Name: [EUT Closed\\_Ch 3\\_2462MHz\\_6mbps\\_scan2.da4](#)

Program Name: EUT Closed \_Ch 3\_2462MHz\_Data 1.da4

Phantom section: Flat Section

DUT: Notebook

Communication System: 2450 Mhz

Frequency: 2462 MHz

Duty Cycle: 1:1

Medium: Body 2450 MHz Medium parameters used:  $f = 2450\text{ MHz}$ ;  $\sigma = 1.97\text{ mho/m}$ ;  $\epsilon_r = 52.1$ ;  $\rho = 1000\text{ kg/m}^3$

### DASY4 Configuration:

Electronics: DAE4 Sn627                      Calibrated: 6/14/2007

Phantom: SAM 12                              Measurement SW: DASY4, V4.7 Build 80

Probe: EX3DV4 - SN3541                      ConvF(7.07, 7.07, 7.07)                      Calibrated: 7/13/2007

Post processing SW: SEMCAD, V1.8 Build 186

Sensor-Surface: 4mm (Mechanical Surface Detection)

**EUT Front\_Ch 3\_2462MHz\_Data 1/Area Scan (11x41x1):** Measurement grid:

$dx=5\text{mm}$ ,  $dy=5\text{mm}$

Maximum value of SAR (measured) = 0.067 mW/g

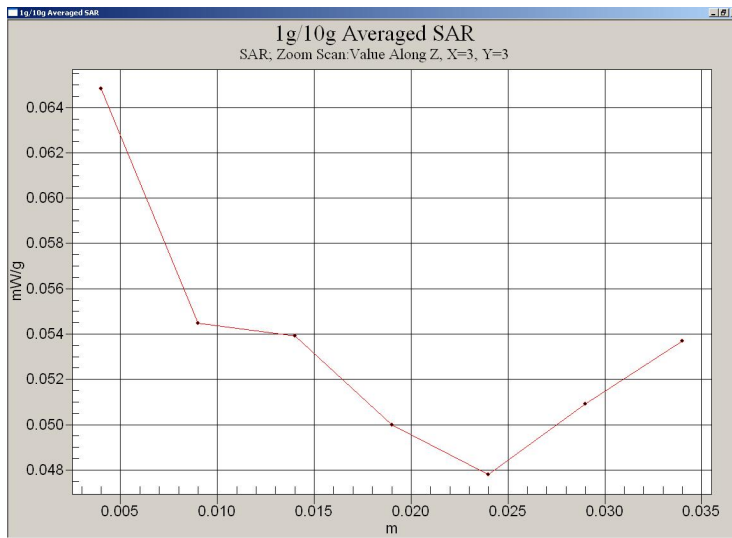
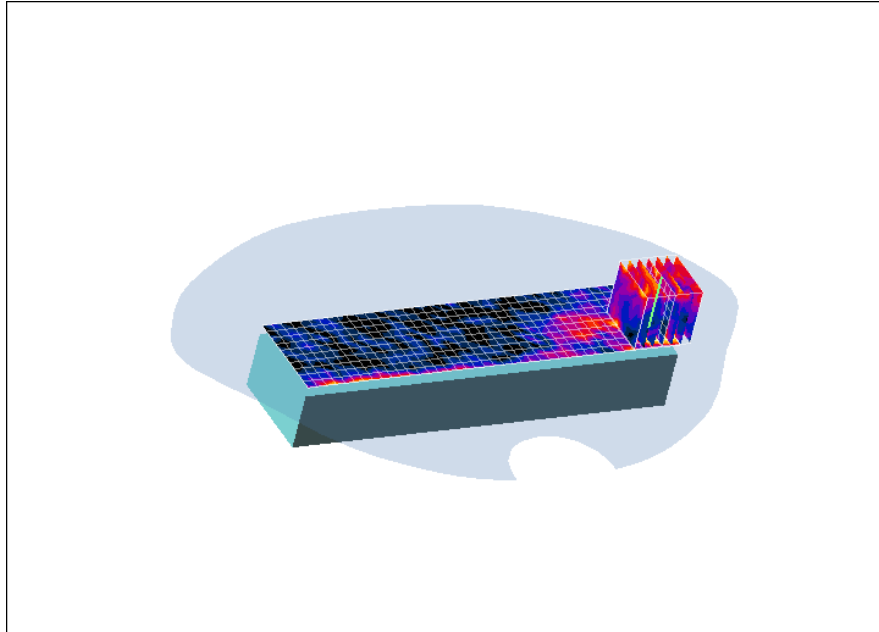
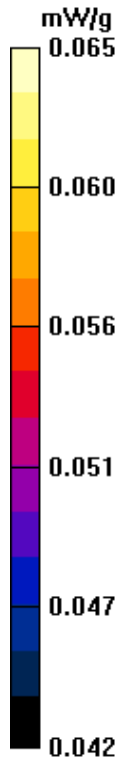
**EUT Front\_Ch 3\_2462MHz\_Data 1/Zoom Scan (7x7x7)/Cube 0:** Measurement grid:  $dx=5\text{mm}$ ,  $dy=5\text{mm}$ ,  $dz=5\text{mm}$

Reference Value = 5.21 V/m; Power Drift = -0.768 dB

Peak SAR (extrapolated) = 0.101 W/kg

**SAR(1 g) = 0.063 mW/g; SAR(10 g) = 0.054 mW/g**

Maximum value of SAR (measured) = 0.065 mW/g





## TEST RESULTS

---

**Ambient Temperature:**  $24 \pm 1^{\circ}\text{C}$   
**Tissue Temperature:**  $24 \pm 1^{\circ}\text{C}$   
**Humidity:** 54% to 59%

Test Laboratory: TUV SUD PSB PTE LTD.

Date/Time: 3/29/2009 1:40:10 PM

File Name: [EUT Lap\\_Ch 1\\_2412MHz\\_11mbps.da4](#)

Program Name: EUT Lap\_Ch 1\_2412MHz\_Data 1.da4

Phantom section: Flat Section

DUT: Notebook

Communication System: 2450 Mhz

Frequency: 2412 MHz

Duty Cycle: 1:1

Medium: Body 2450 MHz Medium parameters used:  $f = 2450\text{ MHz}$ ;  $\sigma = 1.97\text{ mho/m}$ ;  $\epsilon_r = 52.1$ ;  $\rho = 1000\text{ kg/m}^3$

### DASY4 Configuration:

Electronics: DAE4 Sn627                      Calibrated: 6/14/2007

Phantom: SAM 12                              Measurement SW: DASY4, V4.7 Build 80

Probe: EX3DV4 - SN3541                      ConvF(7.07, 7.07, 7.07)                      Calibrated: 7/13/2007

Post processing SW: SEMCAD, V1.8 Build 186

Sensor-Surface: 4mm (Mechanical Surface Detection)

**EUT Rear\_Ch 1\_2412MHz\_Data 1/Area Scan (13x17x1):** Measurement grid:

$dx=5\text{mm}$ ,  $dy=5\text{mm}$

Maximum value of SAR (measured) = 0.070 mW/g

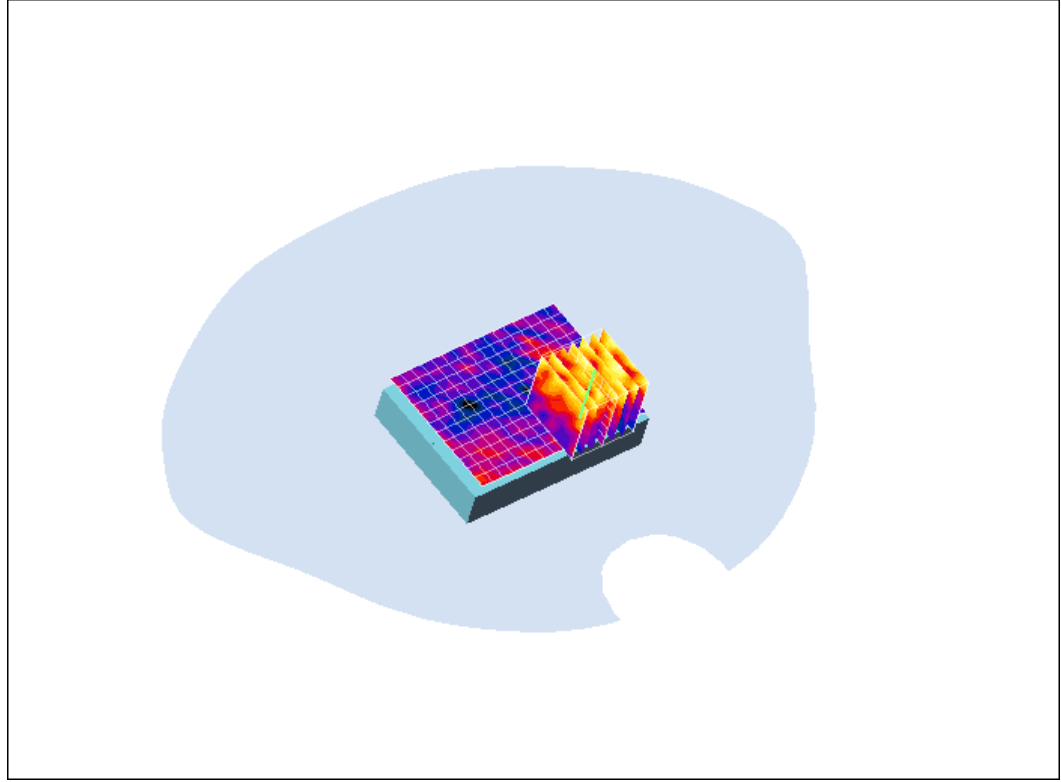
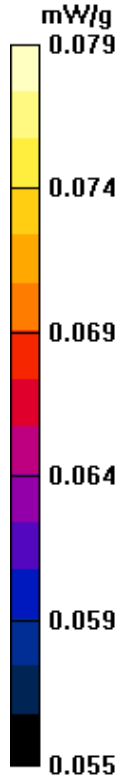
**EUT Rear\_Ch 1\_2412MHz\_Data 1/Zoom Scan (7x7x7)/Cube 0:** Measurement grid:  $dx=5\text{mm}$ ,  $dy=5\text{mm}$ ,  $dz=5\text{mm}$

Reference Value = 5.63 V/m; Power Drift = -0.384 dB

Peak SAR (extrapolated) = 0.079 W/kg

**SAR(1 g) = 0.073 mW/g; SAR(10 g) = 0.068 mW/g**

Maximum value of SAR (measured) = 0.079 mW/g





## TEST RESULTS

---

**Ambient Temperature:**  $24 \pm 1^{\circ}\text{C}$   
**Tissue Temperature:**  $24 \pm 1^{\circ}\text{C}$   
**Humidity:** 54% to 59%

Test Laboratory: TUV SUD PSB PTE LTD.

Date/Time: 3/29/2009 2:07:01 PM

File Name: [EUT Lap\\_Ch 2\\_2442MHz\\_11mbps.da4](#)

Program Name: EUT Rear\_Ch 2\_2442MHz\_Data 1.da4

Phantom section: Flat Section

DUT: notebook

Communication System: 2450 Mhz

Frequency: 2442 MHz

Duty Cycle: 1:1

Medium: Body 2450 MHz Medium parameters used:  $f = 2450\text{ MHz}$ ;  $\sigma = 1.97\text{ mho/m}$ ;  $\epsilon_r = 52.1$ ;  $\rho = 1000\text{ kg/m}^3$

### DASY4 Configuration:

Electronics: DAE4 Sn627                      Calibrated: 6/14/2007

Phantom: SAM 12                              Measurement SW: DASY4, V4.7 Build 80

Probe: EX3DV4 - SN3541                      ConvF(7.07, 7.07, 7.07)                      Calibrated: 7/13/2007

Post processing SW: SEMCAD, V1.8 Build 186

Sensor-Surface: 4mm (Mechanical Surface Detection)

**EUT Rear\_Ch 2\_2442MHz\_Data 1/Area Scan (13x18x1):** Measurement grid:

$dx=5\text{mm}$ ,  $dy=5\text{mm}$

Maximum value of SAR (measured) = 0.081 mW/g

**EUT Rear\_Ch 2\_2442MHz\_Data 1/Zoom Scan (7x7x7)/Cube 0:** Measurement

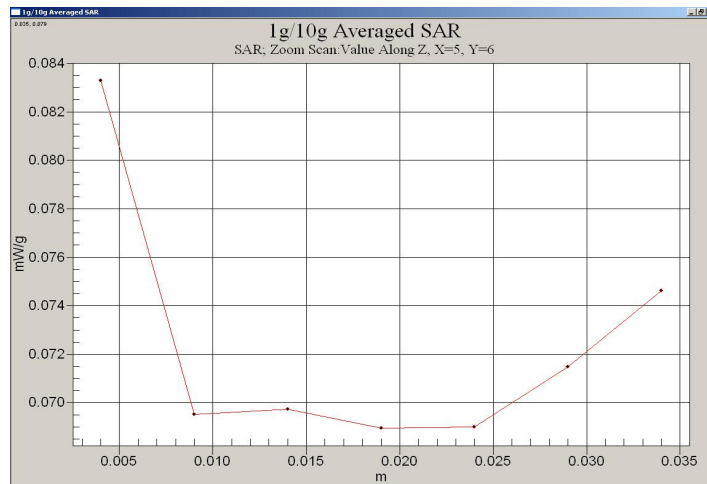
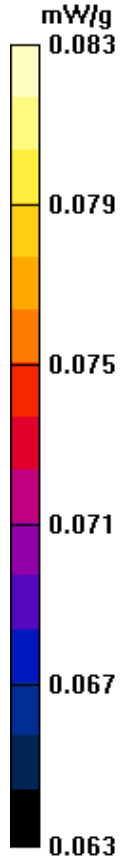
grid:  $dx=5\text{mm}$ ,  $dy=5\text{mm}$ ,  $dz=5\text{mm}$

Reference Value = 3.42 V/m; Power Drift = 0.334 dB

Peak SAR (extrapolated) = 0.221 W/kg

**SAR(1 g) = 0.082 mW/g; SAR(10 g) = 0.074 mW/g**

Maximum value of SAR (measured) = 0.083 mW/g





## TEST RESULTS

---

**Ambient Temperature:**  $24 \pm 1^{\circ}\text{C}$   
**Tissue Temperature:**  $24 \pm 1^{\circ}\text{C}$   
**Humidity:** 54% to 59%

Test Laboratory: TUV SUD PSB PTE LTD.

Date/Time: 3/30/2009 9:51:13 AM

File Name: [EUT Lap\\_Ch 3\\_2462MHz\\_11mbps.da4](#)

Program Name: EUT Lap\_Ch 3\_2462MHz\_Data 1.da4

Phantom section: Flat Section

DUT: Notebook

Communication System: 2450 Mhz

Frequency: 2462 MHz

Duty Cycle: 1:1

Medium: Body 2450 MHz Medium parameters used:  $f = 2450\text{ MHz}$ ;  $\sigma = 1.97\text{ mho/m}$ ;  $\epsilon_r = 52.1$ ;  $\rho = 1000\text{ kg/m}^3$

### DASY4 Configuration:

Electronics: DAE4 Sn627                      Calibrated: 6/14/2007

Phantom: SAM 12                              Measurement SW: DASY4, V4.7 Build 80

Probe: EX3DV4 - SN3541                      ConvF(7.07, 7.07, 7.07)                      Calibrated: 7/13/2007

Post processing SW: SEMCAD, V1.8 Build 186

Sensor-Surface: 4mm (Mechanical Surface Detection)

**EUT Rear\_Ch 3\_2462MHz\_Data 1/Area Scan (13x18x1):** Measurement grid:  
 $dx=5\text{mm}$ ,  $dy=5\text{mm}$

Maximum value of SAR (measured) = 0.020 mW/g

**EUT Rear\_Ch 3\_2462MHz\_Data 1/Zoom Scan (7x7x7)/Cube 0:** Measurement  
grid:  $dx=5\text{mm}$ ,  $dy=5\text{mm}$ ,  $dz=5\text{mm}$

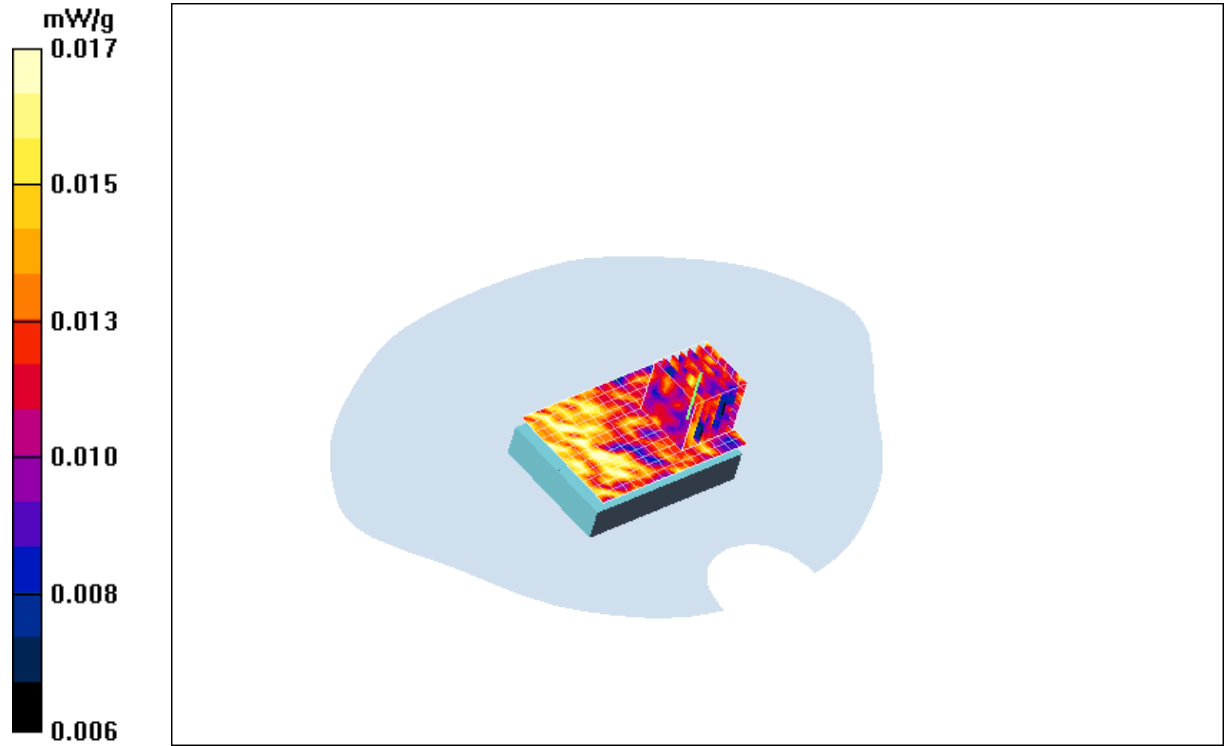
Reference Value = 2.85 V/m; Power Drift = -0.719 dB

Peak SAR (extrapolated) = 0.017 W/kg

**SAR(1 g) = 0.012 mW/g; SAR(10 g) = 0.011 mW/g**



Maximum value of SAR (measured) = 0.017 mW/g





## TEST RESULTS

---

**Ambient Temperature:**  $24 \pm 1^{\circ}\text{C}$   
**Tissue Temperature:**  $24 \pm 1^{\circ}\text{C}$   
**Humidity:** 54% to 59%

Test Laboratory: TUV SUD PSB PTE LTD.

Date/Time: 3/28/2009 12:02:27 PM

File Name: [EUT Closed\\_Ch 1\\_2412MHz\\_11mbps.da4](#)

Program Name: EUT Closed\_Ch 1\_2412MHz\_Data 1.da4

Phantom section: Flat Section

DUT: Notebook

Communication System: 2450 Mhz

Frequency: 2412 MHz

Duty Cycle: 1:1

Medium: Body 2450 MHz Medium parameters used:  $f = 2450\text{ MHz}$ ;  $\sigma = 1.97\text{ mho/m}$ ;  $\epsilon_r = 52.1$ ;  $\rho = 1000\text{ kg/m}^3$

### DASY4 Configuration:

Electronics: DAE4 Sn627                      Calibrated: 6/14/2007

Phantom: SAM 12                              Measurement SW: DASY4, V4.7 Build 80

Probe: EX3DV4 - SN3541                      ConvF(7.07, 7.07, 7.07)                      Calibrated: 7/13/2007

Post processing SW: SEMCAD, V1.8 Build 186

Sensor-Surface: 4mm (Mechanical Surface Detection)

**EUT Front\_Ch 1\_2412MHz\_Data 1/Area Scan (11x41x1):** Measurement grid:

$dx=5\text{mm}$ ,  $dy=5\text{mm}$

Maximum value of SAR (measured) = 0.059 mW/g

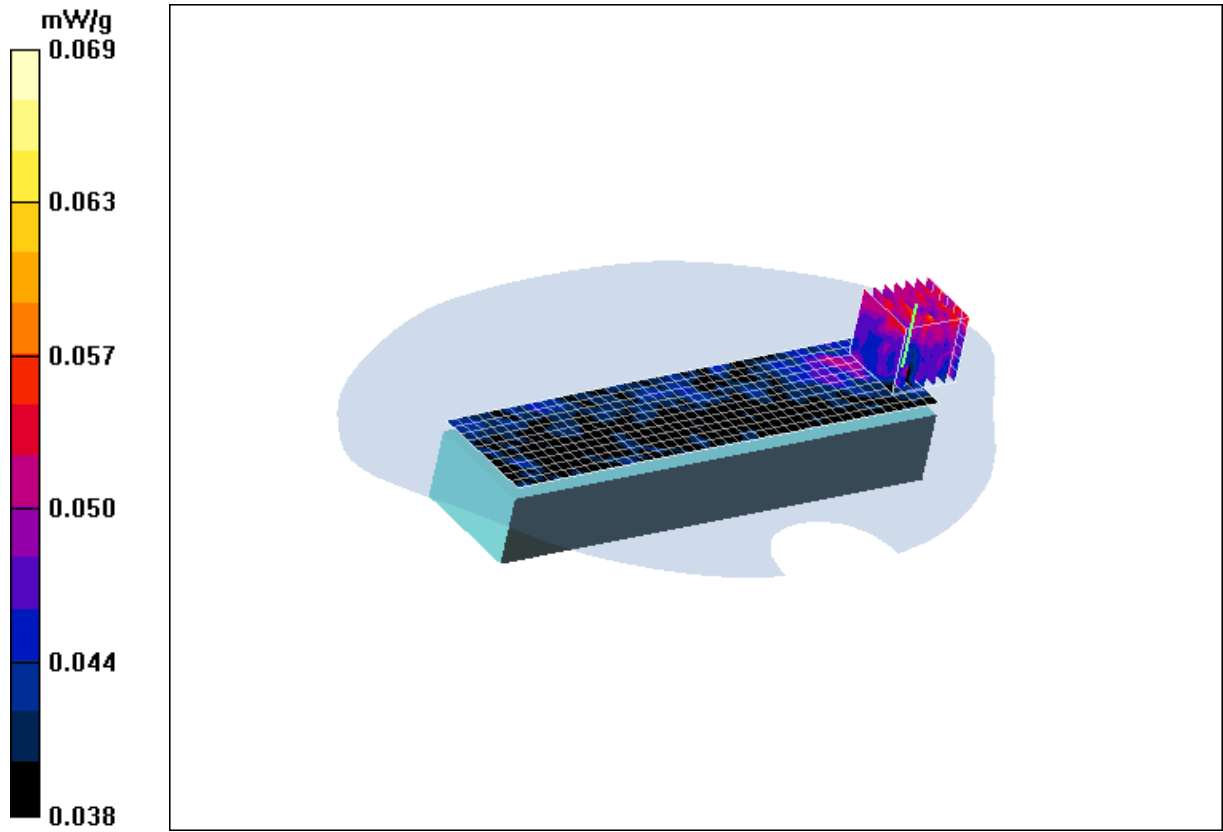
**EUT Front\_Ch 1\_2412MHz\_Data 1/Zoom Scan (7x7x7)/Cube 0:** Measurement grid:  $dx=5\text{mm}$ ,  $dy=5\text{mm}$ ,  $dz=5\text{mm}$

Reference Value = 4.55 V/m; Power Drift = -0.059 dB

Peak SAR (extrapolated) = 0.221 W/kg

**SAR(1 g) = 0.062 mW/g; SAR(10 g) = 0.051 mW/g**

Maximum value of SAR (measured) = 0.069 mW/g





## TEST RESULTS

---

**Ambient Temperature:**  $24 \pm 1^{\circ}\text{C}$   
**Tissue Temperature:**  $24 \pm 1^{\circ}\text{C}$   
**Humidity:** 54% to 59%

Test Laboratory: TUV SUD PSB PTE LTD.

Date/Time: 3/30/2009 4:42:23 PM

File Name: [EUT Closed\\_Ch 2\\_2442MHz\\_11mbps.da4](#)

Program Name: EUT closed \_Ch 2\_2442MHz\_Data 1.da4

Phantom section: Flat Section

DUT: Notebook

Communication System: 2450 Mhz

Frequency: 2442 MHz

Duty Cycle: 1:1

Medium: Body 2450 MHz Medium parameters used:  $f = 2450\text{ MHz}$ ;  $\sigma = 1.97\text{ mho/m}$ ;  $\epsilon_r = 52.1$ ;  $\rho = 1000\text{ kg/m}^3$

### DASY4 Configuration:

Electronics: DAE4 Sn627                      Calibrated: 6/14/2007

Phantom: SAM 12                              Measurement SW: DASY4, V4.7 Build 80

Probe: EX3DV4 - SN3541                      ConvF(7.07, 7.07, 7.07)                      Calibrated: 7/13/2007

Post processing SW: SEMCAD, V1.8 Build 186

Sensor-Surface: 4mm (Mechanical Surface Detection)

**EUT closed\_Ch 2\_2442MHz\_Data 1/Area Scan (9x37x1):** Measurement grid:

$dx=5\text{mm}$ ,  $dy=5\text{mm}$

Maximum value of SAR (measured) = 0.053 mW/g

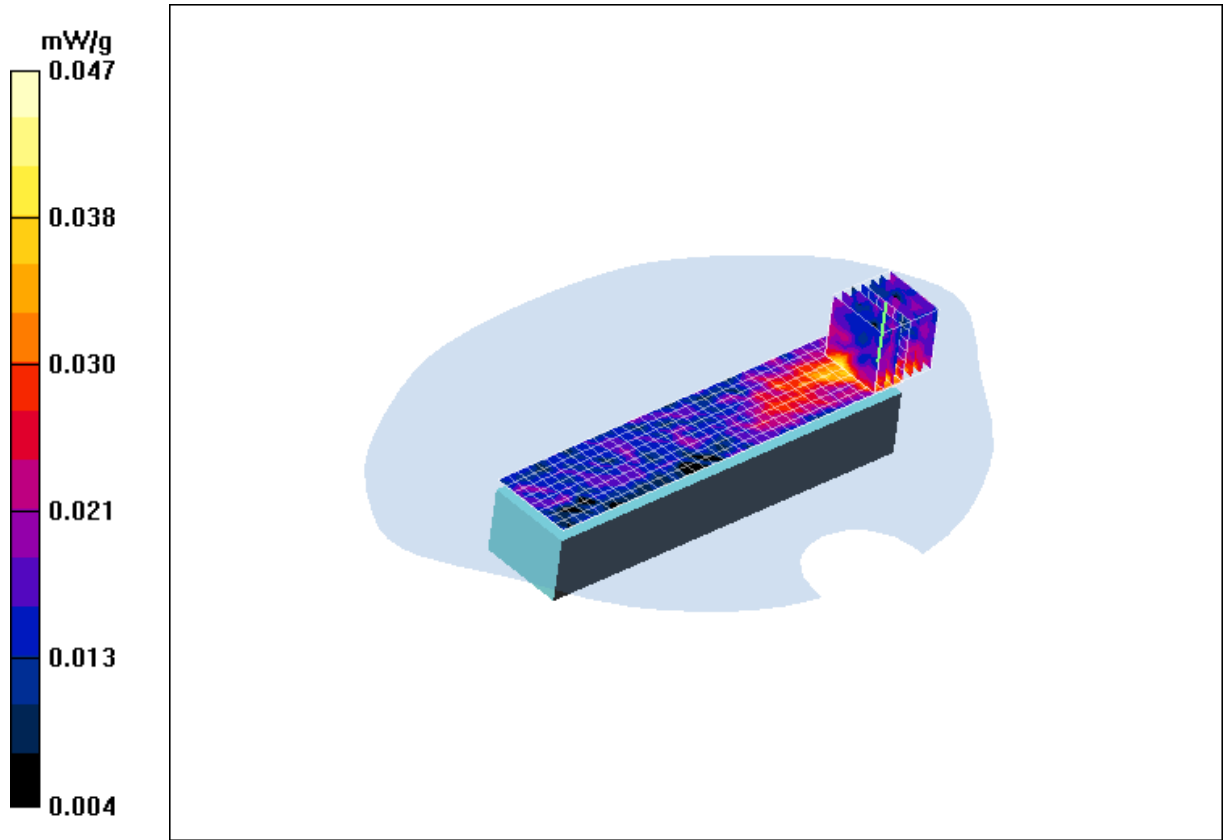
**EUT closed\_Ch 2\_2442MHz\_Data 1/Zoom Scan (7x7x7)/Cube 0:** Measurement grid:  $dx=5\text{mm}$ ,  $dy=5\text{mm}$ ,  $dz=5\text{mm}$

Reference Value = 1.59 V/m; Power Drift = 2.05 dB

Peak SAR (extrapolated) = 0.138 W/kg

**SAR(1 g) = 0.039 mW/g; SAR(10 g) = 0.020 mW/g**

Maximum value of SAR (measured) = 0.047 mW/g





## TEST RESULTS

---

**Ambient Temperature:**  $24 \pm 1^{\circ}\text{C}$   
**Tissue Temperature:**  $24 \pm 1^{\circ}\text{C}$   
**Humidity:** 54% to 59%

Test Laboratory: TUV SUD PSB PTE LTD.

Date/Time: 3/30/2009 1:59:22 PM

File Name: [EUT Closed\\_Ch 3\\_2462MHz\\_11mbps.da4](#)

Program Name: EUT closed \_Ch 3\_2462MHz\_Data 1.da4

Phantom section: Flat Section

DUT: Notebook

Communication System: 2450 Mhz

Frequency: 2462 MHz

Duty Cycle: 1:1

Medium: Body 2450 MHz Medium parameters used:  $f = 2450\text{ MHz}$ ;  $\sigma = 1.97\text{ mho/m}$ ;  $\epsilon_r = 52.1$ ;  $\rho = 1000\text{ kg/m}^3$

### DASY4 Configuration:

Electronics: DAE4 Sn627                      Calibrated: 6/14/2007

Phantom: SAM 12                              Measurement SW: DASY4, V4.7 Build 80

Probe: EX3DV4 - SN3541                      ConvF(7.4, 7.4, 7.4)                      Calibrated: 6/23/2008

Post processing SW: SEMCAD, V1.8 Build 186

Sensor-Surface: 4mm (Mechanical Surface Detection)

**EUT closed\_Ch 3\_2462MHz\_Data 1/Area Scan (9x37x1):** Measurement grid:

$dx=5\text{mm}$ ,  $dy=5\text{mm}$

Maximum value of SAR (measured) = 0.062 mW/g

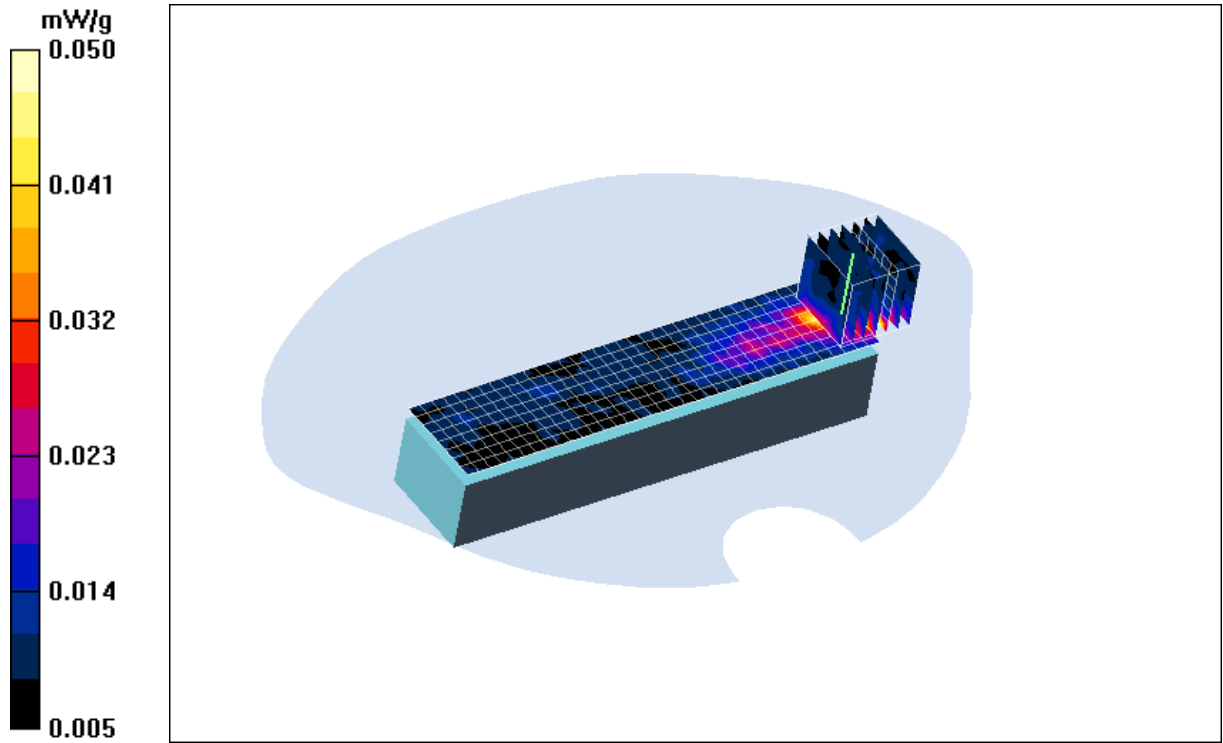
**EUT closed\_Ch 3\_2462MHz\_Data 1/Zoom Scan (7x7x7)/Cube 0:** Measurement grid:  $dx=5\text{mm}$ ,  $dy=5\text{mm}$ ,  $dz=5\text{mm}$

Reference Value = 1.64 V/m; Power Drift = 2.39 dB

Peak SAR (extrapolated) = 0.117 W/kg

**SAR(1 g) = 0.046 mW/g; SAR(10 g) = 0.024 mW/g**

Maximum value of SAR (measured) = 0.050 mW/g





**Conducted Peak Output Power Measurement:**

Data Rate	Frequency MHz	Conducted Peak Output power dBm
DQPSK 1Mbps	CH1 2412MHz	16.72
	CH2 2442MHz	16.55
	CH3 2462MHz	16.55

Data Rate	Frequency MHz	Conducted Peak Output power dBm
DQPSK 2Mbps	CH1 2412MHz	16.76
	CH2 2442MHz	16.60
	CH3 2462MHz	16.51

Data Rate	Frequency MHz	Conducted Peak Output power dBm
CCK 5.5Mbps	CH1 2412MHz	16.54
	CH2 2442MHz	16.44
	CH3 2462MHz	16.38

Data Rate	Frequency MHz	Conducted Peak Output power dBm
CCK 11Mbps	CH1 2412MHz	16.93
	CH2 2442MHz	16.67
	CH3 2462MHz	16.60

Data Rate	Frequency MHz	Conducted Peak Output power dBm
(802.11g) 6Mbps	CH1 2412MHz	16.94
	CH2 2442MHz	16.86
	CH3 2462MHz	16.62

Data Rate	Frequency MHz	Conducted Peak Output power dBm
(802.11g) 9Mbps	CH1 2412MHz	16.76
	CH2 2442MHz	16.20
	CH3 2462MHz	16.17

Data Rate	Frequency MHz	Conducted Peak Output power dBm
(802.11g) 12Mbps	CH1 2412MHz	16.49
	CH2 2442MHz	16.35
	CH3 2462MHz	16.37

Data Rate	Frequency MHz	Conducted Peak Output power dBm
(802.11g)18Mbps	CH1 2412MHz	16.89
	CH2 2442MHz	16.55
	CH3 2462MHz	16.27



**Test Report No. S09EEC00652**  
**dated 31 Mar 2009**



PSB Singapore

Data Rate	Frequency MHz	Conducted Peak Output power dBm
(802.11g) 24Mbps	CH1 2412MHz	16.39
	CH2 2442MHz	16.26
	CH3 2462MHz	16.43

Data Rate	Frequency MHz	Conducted Peak Output power dBm
(802.11g) 36Mbps	CH1 2412MHz	16.20
	CH2 2442MHz	16.06
	CH3 2462MHz	16.18

Data Rate	Frequency MHz	Conducted Peak Output power dBm
(802.11g) 48Mbps	CH1 2412MHz	16.46
	CH2 2442MHz	16.24
	CH3 2462MHz	16.28

Data Rate	Frequency MHz	Conducted Peak Output power dBm
(802.11g) 54Mbps	CH1 2412MHz	16.33
	CH2 2442MHz	16.16
	CH3 2462MHz	16.29

**Test Report No. S09EEC00652**  
**dated 31 Mar 2009**



PSB Singapore

This Report is issued under the following conditions:

1. Results of the testing/calibration in the form of a report will be issued immediately after the service has been completed or terminated.
2. Unless otherwise requested, a report shall contain only technical results. Analysis and interpretation of the results and professional opinion and recommendations expressed thereupon, if required, shall be clearly indicated and additional fee paid for, by the Client.
3. This report applies to the sample of the specific product/equipment given at the time of its testing/calibration. The results are not used to indicate or imply that they are applicable to other similar items. In addition, such results must not be used to indicate or imply that TÜV SÜD PSB approves, recommends or endorses the manufacturer, supplier or user of such product/equipment, or that TÜV SÜD PSB in any way "guarantees" the later performance of the product/equipment.
4. The sample/s mentioned in this report is/are submitted/supplied/manufactured by the Client. TÜV SÜD PSB therefore assumes no responsibility for the accuracy of information on the brand name, model number, origin of manufacture, consignment or any information supplied.
5. Additional copies of the report are available to the Client at an additional fee. No third party can obtain a copy of this report through TÜV SÜD PSB, unless the Client has authorised TÜV SÜD PSB in writing to do so.
6. TÜV SÜD PSB may at its sole discretion add to or amend the conditions of the report at the time of issue of the report and such report and such additions or amendments shall be binding on the Client.
7. All copyright in the report shall remain with TÜV SÜD PSB and the Client shall, upon payment of TÜV SÜD PSB's fees for the carrying out of the tests/calibrations, be granted a license to use or publish the report to the third parties subject to the terms and conditions herein, provided always that TÜV SÜD PSB may at its absolute discretion be entitled to impose such conditions on the license as it sees fit.
8. Nothing in this report shall be interpreted to mean that TÜV SÜD PSB has verified or ascertained any endorsement or marks from any other testing authority or bodies that may be found on that sample.
9. This report shall not be reproduced wholly or in parts and no reference shall be made by the Client to TÜV SÜD PSB or to the report or results furnished by TÜV SÜD PSB in any advertisements or sales promotion.
10. Unless otherwise stated, the tests are carried out in TÜV SÜD PSB Pte Ltd, No.1 Science Park Drive Singapore 118221.

January 2008



**ANNEX A**

**TEST INSTRUMENTATION  
&  
GENERAL PROCEDURE**



## TEST INSTRUMENTATION & GENERAL PROCEDURES

## ANNEX A

### A.1 General Test Procedure

In the SAR measurement, the positioning of the probes must be performed with sufficient accuracy to obtain repeatable measurements in the presence of rapid spatial attenuation phenomena. The accurate positioning of the E-field probe is accomplished by using a high precision robot. The robot can be taught to position the probe sensor following a specific pattern of points. In a first sweep, the sensor is positioned as close as possible to the interface, with the sensor enclosure touching the inside of the fiberglass shell. The SAR is measured on a grid of points, which covers the curved surface of the phantom in an area larger than the size of the EUT. After the initial scan, a high- resolution grid is used to locate the absolute maximum measured energy point. At this location, attenuation versus depth scan will be accomplished by the measurement system to calculate the SAR value.

### A.2 SAR Test Instrumentation

#### SAR Measurement System

- **Positioning Equipment**

Type: High Precision Industrial Robot, RX90.  
Precision: High precision (repeatability 0.02mm)  
Reliability: High reliability (industrial design)

- **Compaq Computer**

Type: 2.4GHz Pentium  
Memory: 512MB SDRAM  
Operating System: Windows 2000  
Dell Monitor: 17" LCD

- **Dosimetric E-Field Probe**

Type: ET3DV6  
Isotropy Error ( $\varnothing$ ):  $\pm 0.25$ dB  
Dynamic Range: 0.01 – 100 W/kg

- **Phantom & Tissue**

Phantom: "Phantom SAM 12" and "450MHz Phantom" were manufactured by SPEAG.  
Tissue: Simulated Tissue with electrical characteristics similar to those of the human at normal body temperature ( $23 \pm 1^\circ\text{C}$ )  
Shell: Fiberglass shell phantom with 2mm thickness for "Phantom SAM 12".  
Fiberglass shell phantom with 2mm or 6mm thickness for "450MHz Flat Phantom".

## TEST INSTRUMENTATION & GENERAL PROCEDURES

## ANNEX A

### A.3 Test Setup

#### Phantom



The “Phantom SAM 12”, manufactured by SPEAG is a fiberglass shell phantom with 2 mm shell thickness. It has three measurement areas:

- Left hand
- Right hand
- Flat phantom

The “Phantom SAM 12” table comes in the sizes: A 100x50x85 cm (LxWxH). The bottom plate contains three pair of bolts for locking the device holder. The device holder positions are adjusted to the standard measurement positions in the three sections. Only one device holder is necessary if two phantoms are used (e.g., for different solutions).

#### Simulated tissue

**Simulated Tissue: Suggested in a paper by George Hartsgrove and colleagues in University of Ottawa Ref.: Bioelectromagnetics 8:29-36 (1987)**

This simulated tissue is mainly composed of water, sugar and salt. At higher frequencies, in order to achieve the proper conductivity, the solution does not contain salt. Also, at these frequencies, D.I. water and alcohol is preferred.

Tissue Density : Approximately  $1.25 \text{ g/cm}^3$

#### • **Preparation**

The ingredients (i.e. water, sugar, salt, etc) required to prepare the simulated tissue are carefully weighed and poured into a clean container for mixing. A stirring paddle, that is attached to a hand drill is used to stir the solution for a duration of about 30 minutes or more. When the ingredients are completely dissolved, the solution is left in the container for the air bubbles to disappear.

#### **Measurement of Electrical Characteristics of Simulated Tissue**

- 1) S-PARAMETER Network Analyzer, Agilent 8753ES (30kHz – 6GHz)
- 2) Agilent 85070D Dielectric Probe Kit

## **ELECTRICAL CHARACTERISTIC MEASUREMENT SETUP**



- **Description of the Agilent 85070D Dielectric Probe Kit**

The 85070D is a dielectric probe that is used to measure the intrinsic electrical properties of materials in the RF and microwave frequency bands. The 85070D software allows you to measure the complex dielectric constant (also called permittivity) of liquids and semi-solids, including the dielectric loss factor of loss tangent.

To obtain data at hundreds of frequencies in seconds, simply immerse the probe into liquids or semi-solids - no special fixtures or containers are required. The 85070D must be used in conjunction with an Agilent network analyzer. The network analyzer provides the high frequency stimulus, and measures the reflected response.

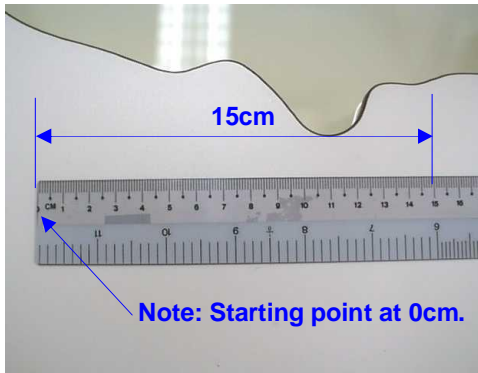
The probe transmits a signal into the material under test (MUT). The measured reflected response from the materials is then related to its dielectric properties. A computer controls the system, and runs software that guides the user through a measurement sequence. An effort is made to keep the results dielectric constant and conductivity within 5 % of published data.

### **Tissue Depth**

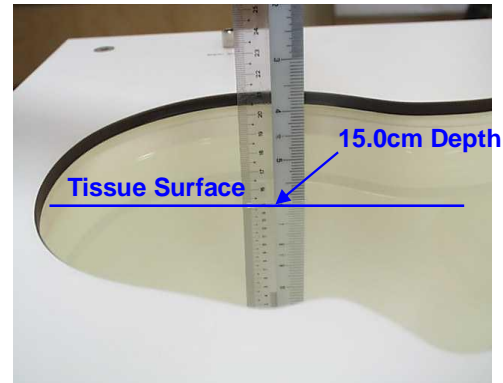
The tissue depth at the "Phantom SAM 12", "450MHz Flat Phantom – 6mm Shell Thickness" & "450MHz Flat Phantom – 2mm Shell Thickness" is approximately 15cm  $\pm$ 0.5cm.

**TEST INSTRUMENTATION & GENERAL PROCEDURES**

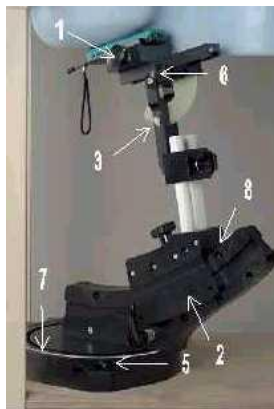
**ANNEX A**



At "Phantom SAM 12"



Tissue – 15.0cm Depth



**The DASY4 holder** is designed to cope with different positions given in the standard. It has two scales for the device rotation (with respect to the body axis) and the device inclination (with respect to the line between the ear openings). The plane between the ear openings and the mouth tip has a rotation angle of 65°. The intended use position in the CENELEC document is has a rotation angle of 65° and an inclination angle of 80°. The rotation centers for both scales is the ear opening. Thus the device needs no repositioning when changing the angles. The device rotation around the device axis is not changed in the holder. In the CENELEC standard it is always 0°. If the standard changes, a support will be provided with the new angle.

1. **"Cheek/Touch Position"** – the device is brought toward the mouth of the head phantom by pivoting against the "ear reference point" or along the "N-F" line for the SCC-34/SC-2 head phantom. This test position is established:
  - i) When any point on the display, keypad or mouthpiece portions of the handset is in contact with the phantom.
  - ii) (Or) When any portion of a foldout, sliding or similar keypad cover opened to its intended self-adjusting normal use position is in contact with the cheek or mouth of the phantom.

For existing head phantoms – when the handset loses contact with the phantom at the pivoting point, rotation should continue until the device touches the cheek of the phantom or breaks its last contact from the ear spacer.

2. **"Ear/Tilt Position"** – With the handset aligned in the "Cheek/Touch Position":



## **TEST INSTRUMENTATION & GENERAL PROCEDURES**

## **ANNEX A**

- i) If the earpiece of the handset is not in full contact with the phantom's ear spacer (in the "Cheek/Touch position") and the peak SAR location for the "Cheek/Touch" position is located at the ear spacer region or corresponds to the earpiece region of the handset, the device should be returned to the "initial ear position" by rotating it away from the mouth until the earpiece is in full contact with the ear spacer.
- ii) (Otherwise) The handset should be moved (translated) away from the cheek perpendicular to the line passes through both "ear reference points" (note: one of these ear reference points may not physically exist on a split head model) for approximate 2-3 cm. While it is in this position, the handset is tilted away from the mouth with respect to the "test device reference point" by 15°. After the tilt, it is then moved (translated) back toward the head perpendicular to the line passes through both "ear reference points" until the device touches the phantom or the ear spacer. If the antenna touches the head first, the positioning process should be repeated with a tilt angle less than 15° so that the device and its antenna would touch the phantom simultaneously. This test position may require a device holder or positioner to achieve the translation and tilting with acceptable positioning repeatability.

### **3. Body Worn Configuration**

All body worn accessories are tested for the FCC RF exposure compliance. The phone is positioned into carrying case (if available) and placed below of the flat phantom. Headset or ear piece (if available) is connected during measurements.

### **4. System Checking**

The manufacturer calibrates the probe annually. Dielectric parameters of the tissue stimulants were measured every day using the dielectric probe kit and network analyser 8753ES. Refer to annex C. A system check measurement was made following the determination of the dielectric parameters of the stimulant using the dipole validation system. A power level of 250mW was supplied to the dipole antenna which was placed under the flat section of the twin SAM phantom. The system checking results (dielectric parameters and SAR values) are in Annex D.





**TEST INSTRUMENTATION & GENERAL PROCEDURES**

**ANNEX A**

<u>Instrument</u>	<u>Model</u>	<u>S/No</u>	<u>Cal Due Date</u>	
Boonton RF Power Meter (Dual Channel)	4532	97701	1 April 2009	√
Boonton Power Sensor	51075	51075	1 April 2009	√
Boonton Power Sensor	51075	32002	1 April 2009	√
S-Parameter Network Analyzer (30kHz – 6GHz)	8753ES	MY40001026	31 Mar 2009	√
Agilent 85070D Dielectric Probe Kit	85075D	21356	-	√
Anritsu RF Signal Generator (10MHz – 20GHz)	68347C	04306	-	√
Amplifier Research Power Amplifier (1MHz – 1000MHz)	25W1000B	27225	-	
Amplifier Research Power Amplifier (800MHz – 4.2GHz)	25S1G4A	29346	-	√
Agilent Dual Directional Coupler (0.1~2.0)GHz	HP778D	18289	-	√
AR Directional Coupler (0.8~4.2)GHz	DC7144	29245	-	
2450MHz System Validation Dipole	D2450V2	752	23 Jun 2009	√
Data Acquisition Electronics (DAE4)	DAE4	627	24 Jun 2009	√
Dosimetric E-field Probe	EX3DV4	3541	23 July 2009	√



## **ANNEX B**

# **TEST SETUP PHOTOGRAPHS**

**TEST SETUP PHOTOGRAPHS**

**ANNEX B**

SAR Test Setup Photographs

Below: SAR Test lap Setup At Flat Phantom

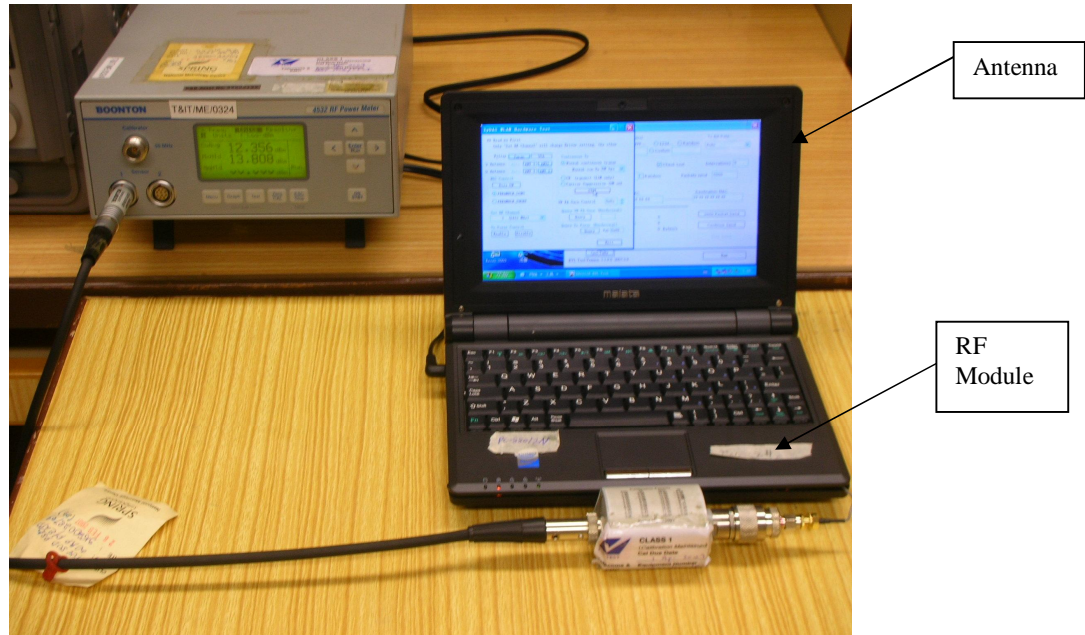


Below: SAR Test Close Position Setup At Flat Phantom



**TEST SETUP PHOTOGRAPHS**

**ANNEX B**



Conducted Power Measurement Test Setup - Closer View  
Figure show the location of RF module and antenna

**TEST SETUP PHOTOGRAPHS**

**ANNEX B**

**EUT PHOTOGRAPHS**



**Front of EUT**



**Rear of EUT**

**TEST SETUP PHOTOGRAPHS**

**ANNEX B**

**EUT PHOTOGRAPHS**



**EUT with Accessories**



**ANNEX C**

**TISSUE SIMULANT DATA SHEETS**



**Tissue Simulant**

**ANNEX C**

<b>Date :</b>	<b>24-Mar-2009</b>
<b>Type of Tissue</b>	<b>Body</b>
<b>Target Frequency (MHz)</b>	2450
<b>Target Dielectric Constant</b>	52.7
<b>Target Conductivity (S/m)</b>	1.9
<b>Composition (by weight)</b>	Water 25500 (72.55%) Glycol 9610 (27.34%) Sugar (0%) Salt 38.4 (0.11%) HEC (0%) Preventol D7 (0%)
<b>Measured Dielectric Constant</b>	52.11
<b>Measured Conductivity (S/m)</b>	1.9704

<b>Probe Name</b>	Dosimetric E-field Probe EX3DV4
<b>Probe Serial Number</b>	3541
<b>Sensor Offset (mm)</b>	1.0
<b>Conversion Factor</b>	7.54 ± 11.8 %
<b>Probe Calibration Due Date (DD/MM/YY)</b>	23/06/09





**Tissue Simulant**

**ANNEX C**

**Body Tissue at 2450MHz**

Frequency	e'	e''	Conductivity
2440000000	52.23	14.51	1.9667
2441000000	52.20	14.49	1.9650
2442000000	52.23	14.48	1.9645
2443000000	52.20	14.50	1.9679
2444000000	52.22	14.48	1.9667
2445000000	52.18	14.49	1.9687
2446000000	52.18	14.48	1.9678
2447000000	52.17	14.48	1.9689
2448000000	52.15	14.49	1.9702
2449000000	52.16	14.50	1.9722
<b>2450000000</b>	<b>52.11</b>	<b>14.48</b>	<b>1.9704</b>
2451000000	52.11	14.48	1.9722
2452000000	52.10	14.50	1.9748
2453000000	52.09	14.51	1.9772
2454000000	52.08	14.50	1.9769
2455000000	52.05	14.50	1.9779
2456000000	52.03	14.51	1.9796
2457000000	52.03	14.51	1.9806
2458000000	52.00	14.53	1.9838
2459000000	52.00	14.53	1.9843
2460000000	51.98	14.53	1.9861
2461000000	51.96	14.55	1.9891
2462000000	51.95	14.55	1.9902
2463000000	51.93	14.57	1.9934
2464000000	51.92	14.55	1.9917
2465000000	51.89	14.59	1.9977
2466000000	51.87	14.59	1.9994
2467000000	51.88	14.60	2.0016
2468000000	51.86	14.62	2.0042
2469000000	51.85	14.61	2.0044
2470000000	51.85	14.64	2.0086
2471000000	51.81	14.64	2.0097
2472000000	51.81	14.66	2.0139
2473000000	51.78	14.68	2.0166
2474000000	51.77	14.68	2.0178
2475000000	51.76	14.70	2.0216
2476000000	51.74	14.71	2.0233
2477000000	51.73	14.73	2.0267
2478000000	51.73	14.74	2.0289
2479000000	51.72	14.75	2.0314
2480000000	51.70	14.77	2.0353

Tested by: SSW  
Date : 24-Mar-2009  
Frequency: 2450MHz  
Mixture: Body Tissue  
Tissue  
temp: 24°C

Composition		
Tap Water	0.0g	0.00%
Ultra Pure Water	25000.0g	72.15%
Sugar	0.0g	0.00%
Glyco	9610.0g	27.73%
Salt	38.0g	0.10%
Preventol D7	0.0g	0.00%
Total Weight	34648g	100.0%

Result (FCC)	Dielectric Constant	Conductivity
Measured	52.11	1.9704
Target (FCC)	52.7	1.95
Low Limit	50.065	1.8525
High Limit	55.335	2.0475
% Off Target	-1.12	1.05

(e' = Dielectric Constant)

(e'' = Loss Factor)



---

**ANNEX D**

**ANNEX D**  
**SAR VALIDATION RESULTS**



## **SAR VALIDATION RESULTS**

## **ANNEX D**

### **SAR Validation – Body Tissue at 2450MHz (Dipole forward power = 250mW)**

**Ambient Temperature:**  $24 \pm 1^{\circ}\text{C}$   
**Tissue Temperature:**  $24 \pm 1^{\circ}\text{C}$   
**Humidity:** 54% to 59%

Test Laboratory: TUV SUD PSB PTE LTD.

Date/Time: 3/23/2009 4:53:30 PM

File Name: [2450MHz\\_System\\_validation.da4](#)

Program Name: 2450MHz\_System\_validation.da4

Phantom section: Flat Section

DUT: Dipole 2450 MHz

Communication System: CW

Frequency: 2450 MHz

Duty Cycle: 1:1

Medium: Body 2450 MHz Medium parameters used:  $f = 2450\text{ MHz}$ ;  $\sigma = 1.94\text{ mho/m}$ ;  $\epsilon_r = 52.1$ ;  $\rho = 1000\text{ kg/m}^3$

#### **DASY4 Configuration:**

Electronics: DAE4 Sn627                      Calibrated: 6/14/2007

Phantom: SAM 12                              Measurement SW: DASY4, V4.7 Build 80

Probe: EX3DV4 - SN3541                      ConvF(7.07, 7.07, 7.07)                      Calibrated: 7/13/2007

Post processing SW: SEMCAD, V1.8 Build 186

Sensor-Surface: 4mm (Mechanical Surface Detection)

**2450MHz\_Data 1/Area Scan (7x9x1):** Measurement grid:  $dx=10\text{mm}$ ,  $dy=10\text{mm}$   
Maximum value of SAR (measured) = 12.7 mW/g

**2450MHz\_Data 1/Zoom Scan (7x7x7)/Cube 0:** Measurement grid:  $dx=5\text{mm}$ ,  
 $dy=5\text{mm}$ ,  $dz=5\text{mm}$

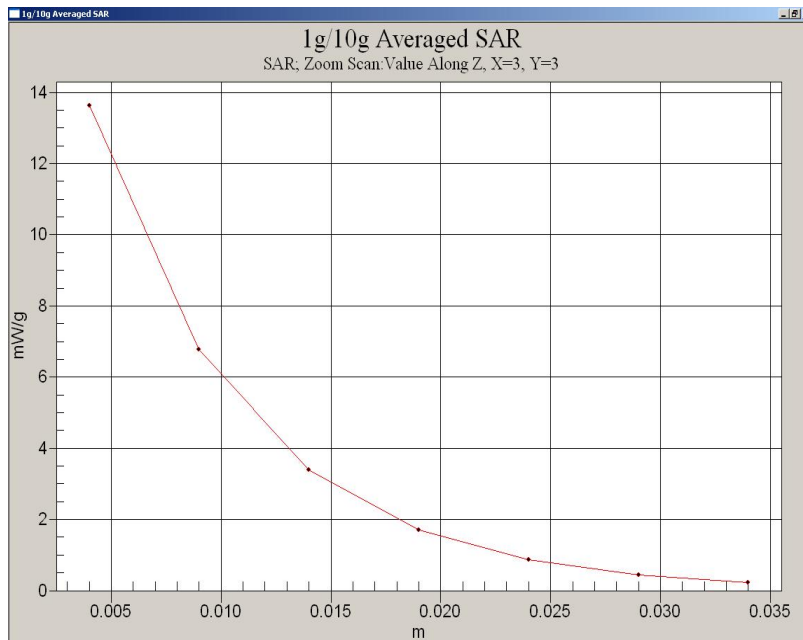
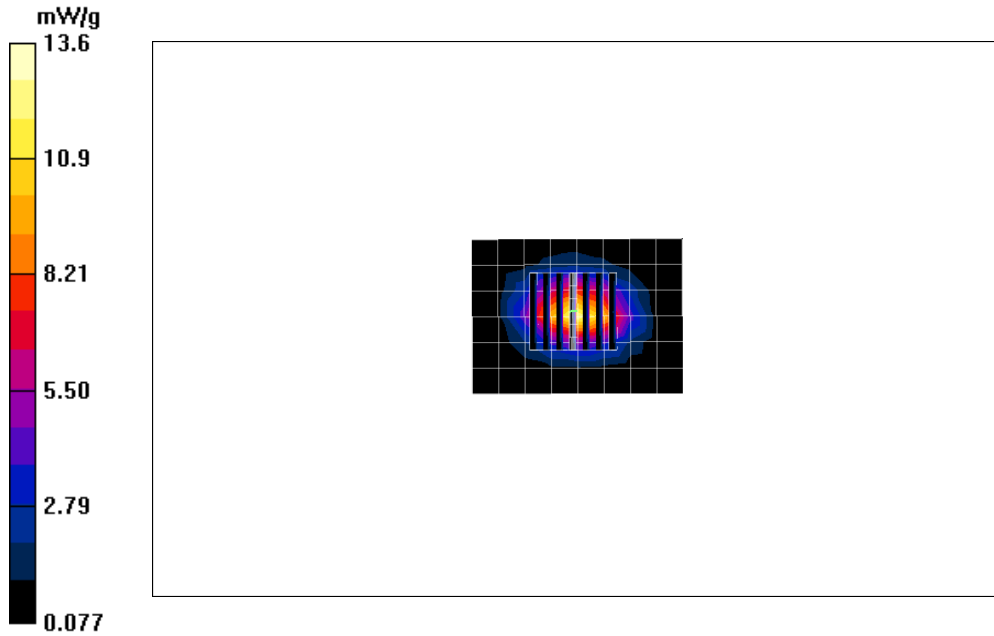
Reference Value = 81.9 V/m; Power Drift = 0.104 dB

Peak SAR (extrapolated) = 24.3 W/kg

**SAR VALIDATION RESULTS**

**ANNEX D**

**SAR(1 g) = 11.9 mW/g; SAR(10 g) = 5.48 mW/g**  
Maximum value of SAR (measured) = 13.6 mW/g





**ANNEX E**

**MEASUREMENT UNCERTAINTY**



**ANNEX E**

**Measurement Uncertainty**

All test measurement carried out are traceable to national standards. The uncertainty of measurement at a confidence level of 95%, with a coverage of 2, is **±20.6%**.

Error Description	Uncertainty Value ± %	Probability Distribution	Divisor	ci 1g	Standard Unc.(1g)	Vi or Veff
<b>Measurement System</b>						
Probe Calibration	± 4.8	normal	1	1	± 4.8	∞
Axial isotropy	± 4.7	rectangular	√3	(1-cp) <sup>1/2</sup>	± 1.9	∞
Hemispherical Isotropy	± 9.6	rectangular	√3	(cp) <sup>1/2</sup>	± 3.9	∞
Spatial resolution	± 0.0	rectangular	√3	1	± 0.0	∞
Boundary effects	± 1.0	rectangular	√3	1	± 0.6	∞
Linearity	± 4.7	rectangular	√3	1	± 2.7	∞
System Detection limit	± 1.0	rectangular	√3	1	± 0.6	∞
Readout electronics	± 1.0	normal	1	1	± 1.0	∞
Response time	± 0.8	rectangular	√3	1	± 0.5	∞
Integration time	± 2.6	rectangular	√3	1	± 1.5	∞
RF ambient conditions	± 3.0	rectangular	√3	1	± 1.7	∞
Probe Positioning Mechanical Tolerance	± 0.4	rectangular	√3	1	± 0.2	∞
Probe Positioning with respect to Phantom Shell	± 2.9	rectangular	√3	1	± 1.7	∞
Extrapolation, Interpolation and Integration Algorithms for Max. SAR Evaluation	± 1.0	rectangular	√3	1	± 0.6	∞
<b>Test Sample Related</b>						
Device positioning	± 2.9	normal	1	1	± 2.9	145
Device holder uncertainty	± 3.6	normal	1	1	± 3.6	5
Power drift	± 5.0	rectangular	√3	1	± 2.9	∞
<b>Phantom and Tissue Parameters</b>						
Phantom uncertainty	± 4.0	rectangular	√3	1	± 2.3	∞
Liquid conductivity (target)	± 5.0	rectangular	√3	0.64	± 1.8	∞
Liquid conductivity (meas)	± 2.5	normal	1	0.64	± 1.6	∞
Liquid permittivity (target)	± 5.0	rectangular	√3	0.6	± 1.7	∞
Liquid permittivity (meas)	± 2.5	normal	1	0.6	± 1.5	∞
<b>Combined Standard Uncertainty</b>					± 10.3	330
<b>Coverage Factor for 95%</b>		<b>k=2</b>				
<b>Extended Standard Uncertainty</b>					± 20.6	



## **ANNEX F**

# **SAR PROBE CALIBRATION CERTIFICATES**

Test Report No. S09EEC00652  
dated 31 Mar 2009



PSB Singapore

**SAR PROBE CALIBRATION CERTIFICATES**

**ANNEX F**

**Calibration Laboratory of  
Schmid & Partner  
Engineering AG**  
Zeughausstrasse 43, 8004 Zurich, Switzerland



**S** Schweizerischer Kalibrierdienst  
**C** Service suisse d'étalonnage  
**S** Servizio svizzero di taratura  
**S** Swiss Calibration Service

Accredited by the Swiss Accreditation Service (SAS)  
The Swiss Accreditation Service is one of the signatories to the EA  
Multilateral Agreement for the recognition of calibration certificates

Accreditation No.: **SCS 108**

Client **TUV SUD PSB**

Certificate No: **EX3-3541\_Jun08**

CALIBRATION CERTIFICATE																																																			
Object	EX3DV4 - SN:3541																																																		
Calibration procedure(s)	QA CAL-01.v6 and QA CAL-23.v3 Calibration procedure for dosimetric E-field probes																																																		
Calibration date:	June 23, 2008																																																		
Condition of the calibrated item	In Tolerance																																																		
<p>This calibration certificate documents the traceability to national standards, which realize the physical units of measurements (SI). The measurements and the uncertainties with confidence probability are given on the following pages and are part of the certificate.</p> <p>All calibrations have been conducted in the closed laboratory facility: environment temperature (22 ± 3)°C and humidity &lt; 70%.</p> <p>Calibration Equipment used (M&amp;TE critical for calibration)</p> <table border="1"> <thead> <tr> <th>Primary Standards</th> <th>ID #</th> <th>Cal Date (Certificate No.)</th> <th>Scheduled Calibration</th> </tr> </thead> <tbody> <tr> <td>Power meter E4419B</td> <td>GB41293874</td> <td>1-Apr-08 (No. 217-00788)</td> <td>Apr-09</td> </tr> <tr> <td>Power sensor E4412A</td> <td>MY41495277</td> <td>1-Apr-08 (No. 217-00788)</td> <td>Apr-09</td> </tr> <tr> <td>Power sensor E4412A</td> <td>MY41498087</td> <td>1-Apr-08 (No. 217-00788)</td> <td>Apr-09</td> </tr> <tr> <td>Reference 3 dB Attenuator</td> <td>SN: S5054 (3c)</td> <td>8-Aug-07 (No. 217-00719)</td> <td>Aug-08</td> </tr> <tr> <td>Reference 20 dB Attenuator</td> <td>SN: S5086 (20b)</td> <td>31-Mar-08 (No. 217-00787)</td> <td>Apr-09</td> </tr> <tr> <td>Reference 30 dB Attenuator</td> <td>SN: S5129 (30b)</td> <td>8-Aug-07 (No. 217-00720)</td> <td>Aug-08</td> </tr> <tr> <td>Reference Probe ES3DV2</td> <td>SN: 3013</td> <td>2-Jan-08 (No. ES3-3013_Jan08)</td> <td>Jan-09</td> </tr> <tr> <td>DAE4</td> <td>SN: 660</td> <td>3-Sep-07 (No. DAE4-660_Sep07)</td> <td>Sep-08</td> </tr> </tbody> </table> <table border="1"> <thead> <tr> <th>Secondary Standards</th> <th>ID #</th> <th>Check Date (in house)</th> <th>Scheduled Check</th> </tr> </thead> <tbody> <tr> <td>RF generator HP 8648C</td> <td>US3642U01700</td> <td>4-Aug-99 (in house check Oct-07)</td> <td>In house check: Oct-09</td> </tr> <tr> <td>Network Analyzer HP 8753E</td> <td>US37390585</td> <td>18-Oct-01 (in house check Oct-07)</td> <td>In house check: Oct-08</td> </tr> </tbody> </table>				Primary Standards	ID #	Cal Date (Certificate No.)	Scheduled Calibration	Power meter E4419B	GB41293874	1-Apr-08 (No. 217-00788)	Apr-09	Power sensor E4412A	MY41495277	1-Apr-08 (No. 217-00788)	Apr-09	Power sensor E4412A	MY41498087	1-Apr-08 (No. 217-00788)	Apr-09	Reference 3 dB Attenuator	SN: S5054 (3c)	8-Aug-07 (No. 217-00719)	Aug-08	Reference 20 dB Attenuator	SN: S5086 (20b)	31-Mar-08 (No. 217-00787)	Apr-09	Reference 30 dB Attenuator	SN: S5129 (30b)	8-Aug-07 (No. 217-00720)	Aug-08	Reference Probe ES3DV2	SN: 3013	2-Jan-08 (No. ES3-3013_Jan08)	Jan-09	DAE4	SN: 660	3-Sep-07 (No. DAE4-660_Sep07)	Sep-08	Secondary Standards	ID #	Check Date (in house)	Scheduled Check	RF generator HP 8648C	US3642U01700	4-Aug-99 (in house check Oct-07)	In house check: Oct-09	Network Analyzer HP 8753E	US37390585	18-Oct-01 (in house check Oct-07)	In house check: Oct-08
Primary Standards	ID #	Cal Date (Certificate No.)	Scheduled Calibration																																																
Power meter E4419B	GB41293874	1-Apr-08 (No. 217-00788)	Apr-09																																																
Power sensor E4412A	MY41495277	1-Apr-08 (No. 217-00788)	Apr-09																																																
Power sensor E4412A	MY41498087	1-Apr-08 (No. 217-00788)	Apr-09																																																
Reference 3 dB Attenuator	SN: S5054 (3c)	8-Aug-07 (No. 217-00719)	Aug-08																																																
Reference 20 dB Attenuator	SN: S5086 (20b)	31-Mar-08 (No. 217-00787)	Apr-09																																																
Reference 30 dB Attenuator	SN: S5129 (30b)	8-Aug-07 (No. 217-00720)	Aug-08																																																
Reference Probe ES3DV2	SN: 3013	2-Jan-08 (No. ES3-3013_Jan08)	Jan-09																																																
DAE4	SN: 660	3-Sep-07 (No. DAE4-660_Sep07)	Sep-08																																																
Secondary Standards	ID #	Check Date (in house)	Scheduled Check																																																
RF generator HP 8648C	US3642U01700	4-Aug-99 (in house check Oct-07)	In house check: Oct-09																																																
Network Analyzer HP 8753E	US37390585	18-Oct-01 (in house check Oct-07)	In house check: Oct-08																																																
Calibrated by:	Name Kana Pokovic	Function Technical Manager	Signature																																																
Approved by:	Name Niels Kuster	Function Quality Manager	Signature																																																
			Issued: June 25, 2008																																																
This calibration certificate shall not be reproduced except in full without written approval of the laboratory.																																																			

Certificate No: EX3-3541\_Jun08

Page 1 of 9





**SAR PROBE CALIBRATION CERTIFICATES**

**ANNEX F**

**Calibration Laboratory of  
Schmid & Partner  
Engineering AG**  
Zeughausstrasse 43, 8004 Zurich, Switzerland



**S** Schweizerischer Kalibrierdienst  
**C** Service suisse d'étalonnage  
**S** Servizio svizzero di taratura  
**S** Swiss Calibration Service

Accredited by the Swiss Accreditation Service (SAS)  
The Swiss Accreditation Service is one of the signatories to the EA  
Multilateral Agreement for the recognition of calibration certificates

Accreditation No.: **SCS 108**

**Glossary:**

TSL	tissue simulating liquid
NORM <sub>x,y,z</sub>	sensitivity in free space
ConvF	sensitivity in TSL / NORM <sub>x,y,z</sub>
DCP	diode compression point
Polarization $\varphi$	$\varphi$ rotation around probe axis
Polarization $\vartheta$	$\vartheta$ rotation around an axis that is in the plane normal to probe axis (at measurement center), i.e., $\vartheta = 0$ is normal to probe axis

**Calibration is Performed According to the Following Standards:**

- IEEE Std 1528-2003, "IEEE Recommended Practice for Determining the Peak Spatial-Averaged Specific Absorption Rate (SAR) in the Human Head from Wireless Communications Devices: Measurement Techniques", December 2003
- IEC 62209-1, "Procedure to measure the Specific Absorption Rate (SAR) for hand-held devices used in close proximity to the ear (frequency range of 300 MHz to 3 GHz)", February 2005

**Methods Applied and Interpretation of Parameters:**

- NORM<sub>x,y,z</sub>:** Assessed for E-field polarization  $\vartheta = 0$  ( $f \leq 900$  MHz in TEM-cell;  $f > 1800$  MHz: R22 waveguide). NORM<sub>x,y,z</sub> are only intermediate values, i.e., the uncertainties of NORM<sub>x,y,z</sub> does not effect the E<sup>2</sup>-field uncertainty inside TSL (see below ConvF).
- NORM(f)<sub>x,y,z</sub> = NORM<sub>x,y,z</sub> \* frequency\_response** (see Frequency Response Chart). This linearization is implemented in DASY4 software versions later than 4.2. The uncertainty of the frequency response is included in the stated uncertainty of ConvF.
- DCP<sub>x,y,z</sub>:** DCP are numerical linearization parameters assessed based on the data of power sweep (no uncertainty required). DCP does not depend on frequency nor media.
- ConvF and Boundary Effect Parameters:** Assessed in flat phantom using E-field (or Temperature Transfer Standard for  $f \leq 800$  MHz) and inside waveguide using analytical field distributions based on power measurements for  $f > 800$  MHz. The same setups are used for assessment of the parameters applied for boundary compensation (alpha, depth) of which typical uncertainty values are given. These parameters are used in DASY4 software to improve probe accuracy close to the boundary. The sensitivity in TSL corresponds to NORM<sub>x,y,z</sub> \* ConvF whereby the uncertainty corresponds to that given for ConvF. A frequency dependent ConvF is used in DASY version 4.4 and higher which allows extending the validity from  $\pm 50$  MHz to  $\pm 100$  MHz.
- Spherical isotropy (3D deviation from isotropy):** in a field of low gradients realized using a flat phantom exposed by a patch antenna.
- Sensor Offset:** The sensor offset corresponds to the offset of virtual measurement center from the probe tip (on probe axis). No tolerance required.



# Probe EX3DV4

## SN:3541

Manufactured:	May 3, 2004
Last calibrated:	July 13, 2007
Recalibrated:	June 23, 2008

Calibrated for DASY Systems

(Note: non-compatible with DASY2 system!)



**SAR PROBE CALIBRATION CERTIFICATES**

**ANNEX F**

EX3DV4 SN:3541

June 23, 2008

**DASY - Parameters of Probe: EX3DV4 SN:3541**

Sensitivity in Free Space <sup>A</sup>			Diode Compression <sup>B</sup>	
NormX	0.44 ± 10.1%	μV/(V/m) <sup>2</sup>	DCP X	89 mV
NormY	0.39 ± 10.1%	μV/(V/m) <sup>2</sup>	DCP Y	89 mV
NormZ	0.45 ± 10.1%	μV/(V/m) <sup>2</sup>	DCP Z	89 mV

**Sensitivity in Tissue Simulating Liquid (Conversion Factors)**

Please see Page 8.

**Boundary Effect**

<b>TSL</b>	<b>900 MHz</b>	<b>Typical SAR gradient: 5 % per mm</b>		
	Sensor Center to Phantom Surface Distance	<b>2.0 mm</b>	<b>3.0 mm</b>	
	SAR <sub>be</sub> [%] Without Correction Algorithm	9.6	6.4	
	SAR <sub>be</sub> [%] With Correction Algorithm	0.5	0.3	
<b>TSL</b>	<b>1750 MHz</b>	<b>Typical SAR gradient: 10 % per mm</b>		
	Sensor Center to Phantom Surface Distance	<b>2.0 mm</b>	<b>3.0 mm</b>	
	SAR <sub>be</sub> [%] Without Correction Algorithm	5.9	3.2	
	SAR <sub>be</sub> [%] With Correction Algorithm	0.6	0.4	

**Sensor Offset**

Probe Tip to Sensor Center **1.0 mm**

**The reported uncertainty of measurement is stated as the standard uncertainty of measurement multiplied by the coverage factor k=2, which for a normal distribution corresponds to a coverage probability of approximately 95%.**

<sup>A</sup> The uncertainties of NormX,Y,Z do not affect the E<sup>2</sup>-field uncertainty inside TSL (see Page 8).

<sup>B</sup> Numerical linearization parameter: uncertainty not required.



**SAR PROBE CALIBRATION CERTIFICATES**

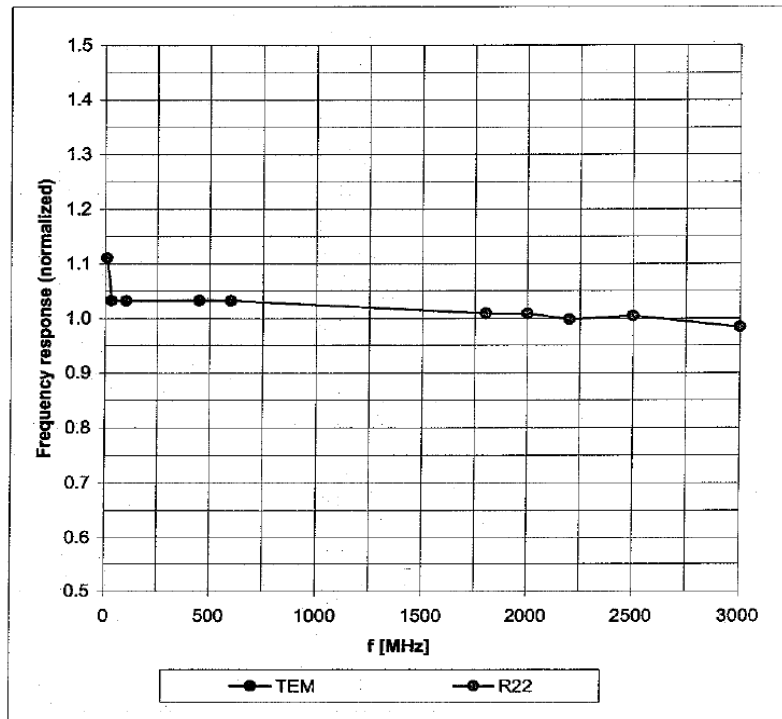
**ANNEX F**

EX3DV4 SN:3541

June 23, 2008

**Frequency Response of E-Field**

(TEM-Cell: ifi110 EXX, Waveguide: R22)



Uncertainty of Frequency Response of E-field:  $\pm 6.3\%$  (k=2)

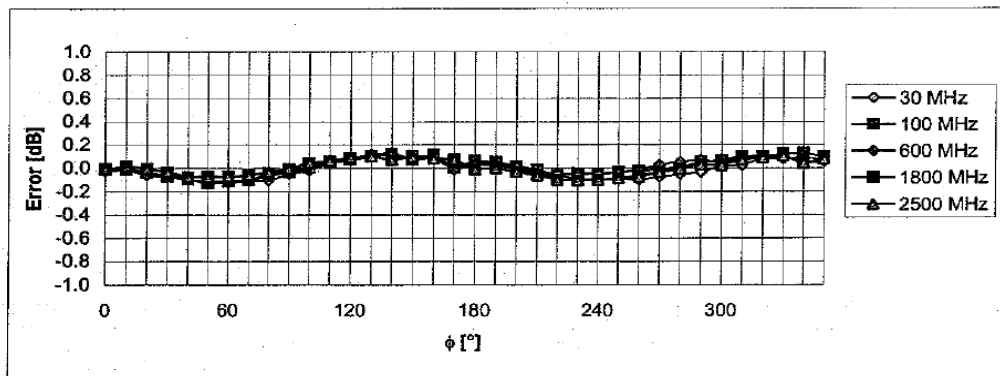
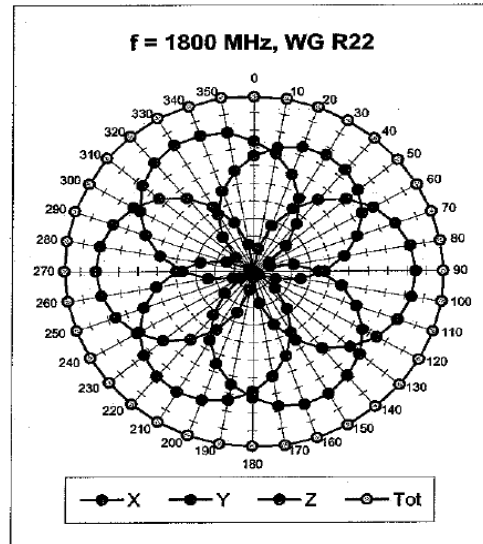
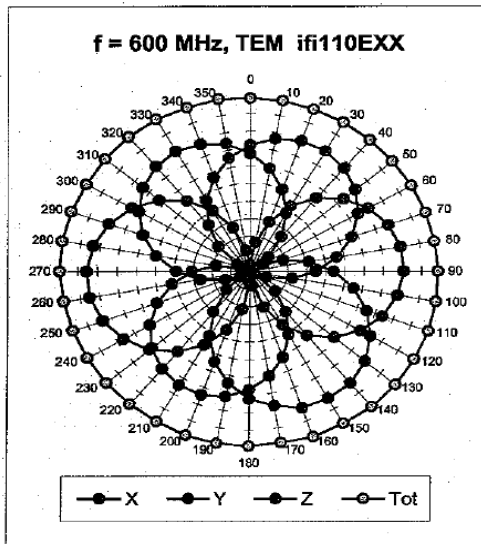
**SAR PROBE CALIBRATION CERTIFICATES**

**ANNEX F**

EX3DV4 SN:3541

June 23, 2008

**Receiving Pattern ( $\phi$ ),  $\vartheta = 0^\circ$**



Uncertainty of Axial Isotropy Assessment:  $\pm 0.5\%$  (k=2)



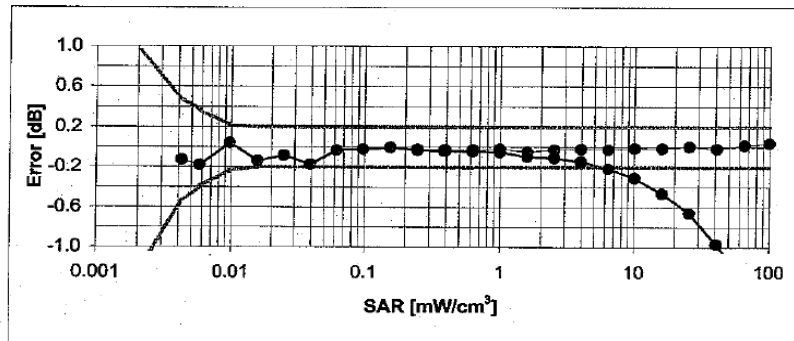
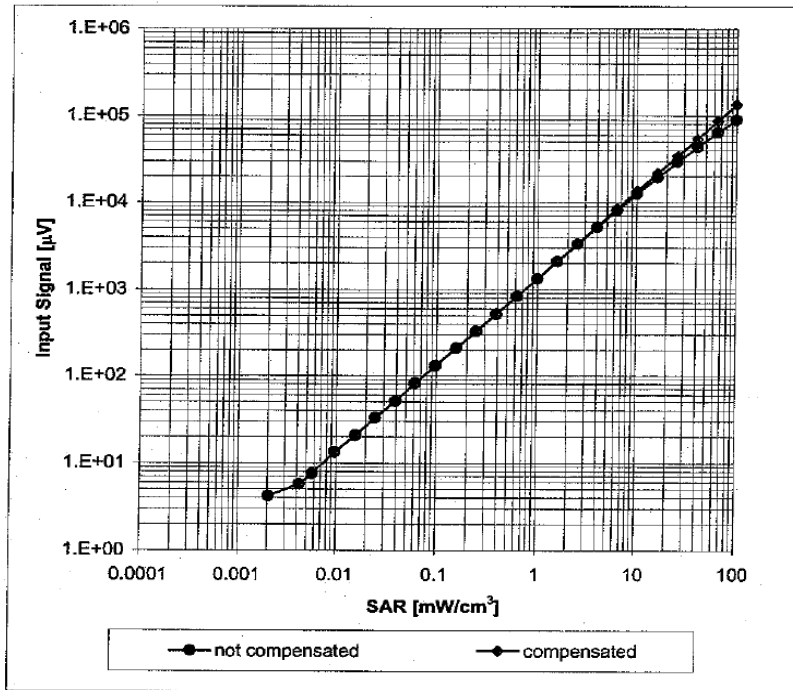
**SAR PROBE CALIBRATION CERTIFICATES**

**ANNEX F**

EX3DV4 SN:3541

June 23, 2008

**Dynamic Range  $f(\text{SAR}_{\text{head}})$**   
(Waveguide R22,  $f = 1800 \text{ MHz}$ )



Uncertainty of Linearity Assessment:  $\pm 0.6\%$  ( $k=2$ )



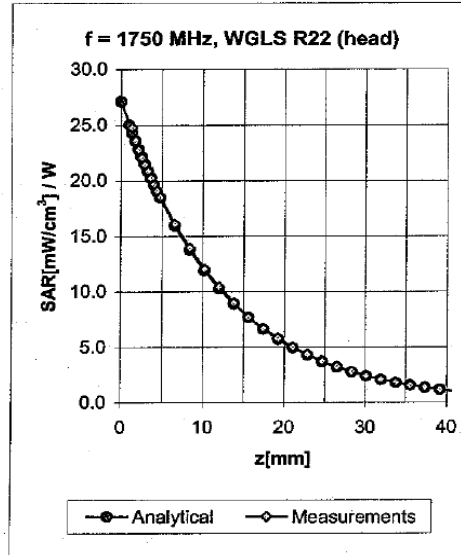
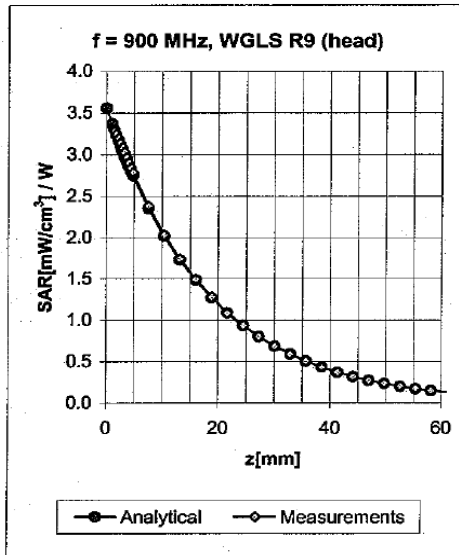
**SAR PROBE CALIBRATION CERTIFICATES**

**ANNEX F**

EX3DV4 SN:3541

June 23, 2008

**Conversion Factor Assessment**



f [MHz]	Validity [MHz] <sup>c</sup>	TSL	Permittivity	Conductivity	Alpha	Depth	ConvF Uncertainty
900	± 50 / ± 100	Head	41.5 ± 5%	0.97 ± 5%	0.51	0.80	9.45 ± 11.0% (k=2)
1750	± 50 / ± 100	Head	40.1 ± 5%	1.37 ± 5%	0.69	0.59	8.53 ± 11.0% (k=2)
1900	± 50 / ± 100	Head	40.0 ± 5%	1.40 ± 5%	0.74	0.56	8.27 ± 11.0% (k=2)
2450	± 50 / ± 100	Head	39.2 ± 5%	1.80 ± 5%	0.62	0.62	7.55 ± 11.0% (k=2)
900	± 50 / ± 100	Body	55.0 ± 5%	1.05 ± 5%	0.71	0.72	9.47 ± 11.0% (k=2)
1750	± 50 / ± 100	Body	53.4 ± 5%	1.49 ± 5%	0.70	0.61	8.23 ± 11.0% (k=2)
1900	± 50 / ± 100	Body	53.3 ± 5%	1.52 ± 5%	0.72	0.60	7.85 ± 11.0% (k=2)
2450	± 50 / ± 100	Body	52.7 ± 5%	1.95 ± 5%	0.55	0.74	7.40 ± 11.0% (k=2)

<sup>c</sup> The validity of ± 100 MHz only applies for DASY v4.4 and higher (see Page 2). The uncertainty is the RSS of the ConvF uncertainty at calibration frequency and the uncertainty for the indicated frequency band.



**SAR PROBE CALIBRATION CERTIFICATES**

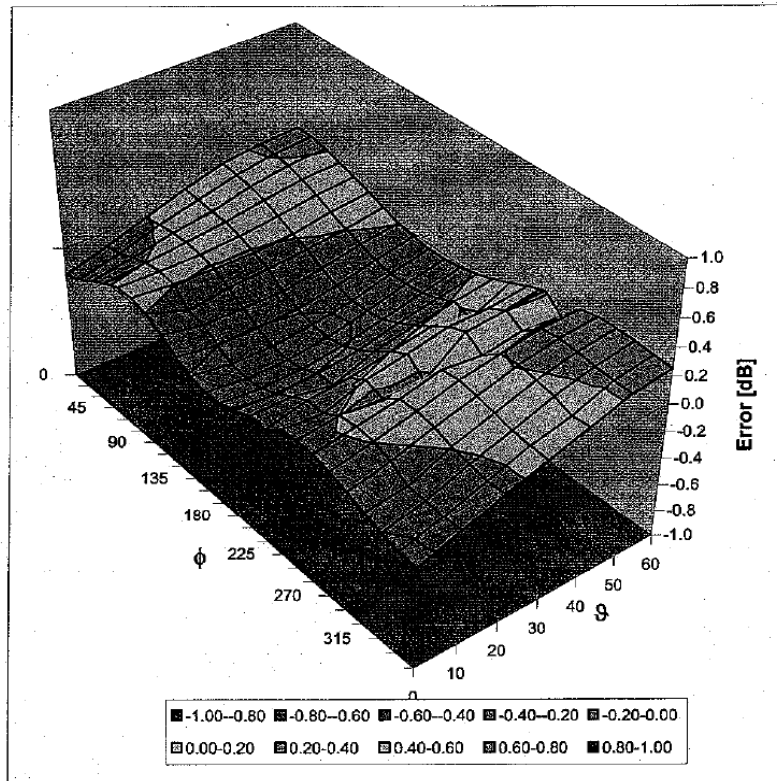
**ANNEX F**

EX3DV4 SN:3541

June 23, 2008

**Deviation from Isotropy in HSL**

Error ( $\phi$ ,  $\theta$ ),  $f = 900$  MHz



Uncertainty of Spherical Isotropy Assessment:  $\pm 2.6\%$  ( $k=2$ )





PSB Singapore

**SAR PROBE CALIBRATION CERTIFICATES**

**ANNEX F**

**Calibration Laboratory of  
Schmid & Partner  
Engineering AG**  
Zeughausstrasse 43, 8004 Zurich, Switzerland



**S** Schweizerischer Kalibrierdienst  
**S** Service suisse d'étalonnage  
**C** Servizio svizzero di taratura  
**S** Swiss Calibration Service

Accredited by the Swiss Accreditation Service (SAS)  
The Swiss Accreditation Service is one of the signatories to the EA  
Multilateral Agreement for the recognition of calibration certificates

Accreditation No.: **SCS 108**

Client **TUV SUD PSB**

Certificate No. **DAE4-627\_Jun08**

**CALIBRATION CERTIFICATE**

Object **DAE4 - SD 000 D04 BA - SN: 627**

Calibration procedure(s) **QA-CAL-06-v12  
Calibration procedure for the data acquisition electronics (DAE)**

Calibration date: **June 24, 2008**

Condition of the calibrated item **In Tolerance**

This calibration certificate documents the traceability to national standards, which realize the physical units of measurements (SI).  
The measurements and the uncertainties with confidence probability are given on the following pages and are part of the certificate.

All calibrations have been conducted in the closed laboratory facility: environment temperature (22 ± 3)°C and humidity < 70%.

Calibration Equipment used (M&TE critical for calibration)

Primary Standards	ID #	Cal Date (Certificate No.)	Scheduled Calibration
Fluke Process Calibrator Type 702	SN: 6295803	04-Oct-07 (No: 6467)	Oct-08
Keithley Multimeter Type 2001	SN: 0810278	03-Oct-07 (No: 6465)	Oct-08
Secondary Standards	ID #	Check Date (in house)	Scheduled Check
Calibrator Box V1.1	SE UMS 006 AB 1004	06-Jun-08 (in house check)	In house check: Jun-09

Calibrated by:	Name <b>Dominique Steffen</b>	Function <b>Technician</b>	Signature 
Approved by:	Name <b>Fin Bornhoff</b>	R&D Director	

Issued: June 24, 2008

This calibration certificate shall not be reproduced except in full without written approval of the laboratory.



**SAR PROBE CALIBRATION CERTIFICATES**

**ANNEX F**

**Calibration Laboratory of  
Schmid & Partner  
Engineering AG**  
Zeughausstrasse 43, 8004 Zurich, Switzerland



**S** Schweizerischer Kalibrierdienst  
**C** Service suisse d'étalonnage  
**S** Servizio svizzero di taratura  
**S** Swiss Calibration Service

Accredited by the Swiss Accreditation Service (SAS)  
The Swiss Accreditation Service is one of the signatories to the EA  
Multilateral Agreement for the recognition of calibration certificates

Accreditation No.: **SCS 108**

**Glossary**

**DAE** data acquisition electronics  
**Connector angle** information used in DASY system to align probe sensor X to the robot coordinate system.

**Methods Applied and Interpretation of Parameters**

- **DC Voltage Measurement:** Calibration Factor assessed for use in DASY system by comparison with a calibrated instrument traceable to national standards. The figure given corresponds to the full scale range of the voltmeter in the respective range.
- **Connector angle:** The angle of the connector is assessed measuring the angle mechanically by a tool inserted. Uncertainty is not required.
- The following parameters as documented in the Appendix contain technical information as a result from the performance test and require no uncertainty.
  - **DC Voltage Measurement Linearity:** Verification of the Linearity at +10% and -10% of the nominal calibration voltage. Influence of offset voltage is included in this measurement.
  - **Common mode sensitivity:** Influence of a positive or negative common mode voltage on the differential measurement.
  - **Channel separation:** Influence of a voltage on the neighbor channels not subject to an input voltage.
  - **AD Converter Values with inputs shorted:** Values on the internal AD converter corresponding to zero input voltage
  - **Input Offset Measurement:** Output voltage and statistical results over a large number of zero voltage measurements.
  - **Input Offset Current:** Typical value for information; Maximum channel input offset current, not considering the input resistance.
  - **Input resistance:** DAE input resistance at the connector, during internal auto-zeroing and during measurement.
  - **Low Battery Alarm Voltage:** Typical value for information. Below this voltage, a battery alarm signal is generated.
  - **Power consumption:** Typical value for information. Supply currents in various operating modes.



**SAR PROBE CALIBRATION CERTIFICATES**

**ANNEX F**

**DC Voltage Measurement**

A/D - Converter Resolution nominal

High Range: 1LSB = 6.1 $\mu$ V, full range = -100...+300 mV  
Low Range: 1LSB = 61nV, full range = -1.....+3mV

DASY measurement parameters: Auto Zero Time: 3 sec; Measuring time: 3 sec

Calibration Factors	X	Y	Z
High Range	405.023 $\pm$ 0.1% (k=2)	404.027 $\pm$ 0.1% (k=2)	404.480 $\pm$ 0.1% (k=2)
Low Range	3.96098 $\pm$ 0.7% (k=2)	3.96430 $\pm$ 0.7% (k=2)	3.96793 $\pm$ 0.7% (k=2)

**Connector Angle**

Connector Angle to be used in DASY system	204 $^{\circ}$ $\pm$ 1 $^{\circ}$
---	-----------------------------------



**SAR PROBE CALIBRATION CERTIFICATES**

**ANNEX F**

**Appendix**

**1. DC Voltage Linearity**

High Range	Input ( $\mu\text{V}$ )	Reading ( $\mu\text{V}$ )	Error (%)
Channel X + Input	200000	200000.5	0.00
Channel X + Input	20000	20005.24	0.03
Channel X - Input	20000	-19997.03	-0.01
Channel Y + Input	200000	199999.6	0.00
Channel Y + Input	20000	20008.45	0.04
Channel Y - Input	20000	-20004.40	0.02
Channel Z + Input	200000	199999.5	0.00
Channel Z + Input	20000	20001.90	0.01
Channel Z - Input	20000	-19999.97	0.00

Low Range	Input ( $\mu\text{V}$ )	Reading ( $\mu\text{V}$ )	Error (%)
Channel X + Input	2000	1999.9	0.00
Channel X + Input	200	200.05	0.03
Channel X - Input	200	-200.16	0.08
Channel Y + Input	2000	1999.9	0.00
Channel Y + Input	200	199.24	-0.38
Channel Y - Input	200	-200.84	0.42
Channel Z + Input	2000	1999.9	0.00
Channel Z + Input	200	199.12	-0.44
Channel Z - Input	200	-200.87	0.44

**2. Common mode sensitivity**

DASY measurement parameters: Auto Zero Time: 3 sec; Measuring time: 3 sec

	Common mode Input Voltage (mV)	High Range Average Reading ( $\mu\text{V}$ )	Low Range Average Reading ( $\mu\text{V}$ )
Channel X	200	15.03	14.38
	-200	-13.32	-13.25
Channel Y	200	8.11	7.69
	-200	-7.94	-8.46
Channel Z	200	7.68	7.22
	-200	-8.32	-8.92

**3. Channel separation**

DASY measurement parameters: Auto Zero Time: 3 sec; Measuring time: 3 sec

	Input Voltage (mV)	Channel X ( $\mu\text{V}$ )	Channel Y ( $\mu\text{V}$ )	Channel Z ( $\mu\text{V}$ )
Channel X	200	-	3.80	-0.58
Channel Y	200	0.95	-	4.99
Channel Z	200	-0.43	-0.86	-



**SAR PROBE CALIBRATION CERTIFICATES**

**ANNEX F**

**4. AD-Converter Values with inputs shorted**

DASY measurement parameters: Auto Zero Time: 3 sec; Measuring time: 3 sec

	High Range (LSB)	Low Range (LSB)
Channel X	15897	16674
Channel Y	16261	16405
Channel Z	15840	16234

**5. Input Offset Measurement**

DASY measurement parameters: Auto Zero Time: 3 sec; Measuring time: 3 sec

Input 10MΩ

	Average (μV)	min. Offset (μV)	max. Offset (μV)	Std. Deviation (μV)
Channel X	-0.42	-1.54	0.98	0.37
Channel Y	-1.36	-2.42	0.07	0.41
Channel Z	-0.32	-2.65	2.10	0.38

**6. Input Offset Current**

Nominal Input circuitry offset current on all channels: <25fA

**7. Input Resistance**

	Zeroing (MΩ)	Measuring (MΩ)
Channel X	0.2001	199.3
Channel Y	0.2001	199.9
Channel Z	0.2001	200.1

**8. Low Battery Alarm Voltage** (verified during pre test)

Typical values	Alarm Level (VDC)
Supply (+ Vcc)	+7.9
Supply (- Vcc)	-7.6

**9. Power Consumption** (verified during pre test)

Typical values	Switched off (mA)	Stand by (mA)	Transmitting (mA)
Supply (+ Vcc)	+0.0	+6	+14
Supply (- Vcc)	-0.01	-8	-9



**ANNEX G**  
**REFERENCES**



**REFERENCES**

**ANNEX G**

The methods and procedures used for the measurements contained in this report are details in the following reference standards:

<b>Publications</b>	<b>Year</b>	<b>Title</b>
Supplement C (Edition 01-01) to FCC OET Bulletin 65 (Edition 97-01)	2001	"Evaluating Compliance with FCC Guidelines for Human Exposure to radio Frequency Fields"
IEEE Standard 1528-200X	2000	"Product Performance Standards Relative to the safe Use of Electromagnetic Energy"
ANSI/IEEE C95.3	1992	"Recommended Practice for the Measurement of Potentially Hazardous Electromagnetic Fields - RF and Microwave"
ANSI/IEEE C95.1	1992	"Safety Levels with Respect to Human Exposure to Radio Frequency Electromagnetic Fields, 3kHz to 300GHz"
EN62209-1	2006	Procedure to determine the Specific Absorption Rate (SAR) for hand-held devices used in close proximity to the ear (300MHz – 3GHz)