

Test Report No. S09EEC00651
dated 31 Mar 2009



PSB Singapore

Note: This report is issued subject to TÜV SÜD PSB's "Terms and Conditions Governing Technical Services".
The terms and conditions governing the issue of this report are set out as attached within this report.

Choose certainty.
Add value.

**COMPLIANCE REPORT ON TESTING IN ACCORDANCE WITH
SAR (SPECIFIC ABSORPTION RATE) REQUIREMENTS**

Supplement C (Edition 01-01)
FCC OET Bulletin 65 (Edition 97-01)

OF A Notebook
[Model:PC-81007]

**TEST
FACILITY**

TÜV SÜD PSB Pte Ltd,
Electrical & Electronics Centre (EEC), Product Services,
1 Science Park Drive, Singapore 118221

**PREPARED
FOR**

Wanlida Group Co., Ltd.
No. 618 Jiahe Road
Xiamen Fujian, China

Tel : (+86) 596-7653999-826

Fax : (+86) 596-7662886

**QUOTATION
NUMBER**

Q09EEC00879

JOB NUMBER

S09EEC00651

TEST PERIOD

23-Mar-2009 – 31-Mar-2009

PREPARED BY

Stanley Siah
Associate Engineer

APPROVED BY

Daniel Yeo
Assistant Vice President



Laboratory:
TÜV SÜD PSB Pte. Ltd.
Testing Services
No.1 Science Park Drive
Singapore 118221

Phone : +65-6885 1333
Fax : +65-6776 8670
E-mail: testing@tuv-sud-psb.sg
www.tuv-sud-psb.sg
Co. Reg : 199002667R

Regional Head Office:
TÜV SÜD Asia Pacific Pte. Ltd.
3 Science Park Drive, #04-01/05
The Franklin, Singapore 118223
TUV®



LA-2007-0380-A
LA-2007-0380-A-1
LA-2007-0381-F
LA-2007-0382-B
LA-2007-0383-G
LA-2007-0384-G
LA-2007-0385-E
LA-2007-0386-C

The results reported herein have been performed in accordance with the laboratory's terms of accreditation under the Singapore Accreditation Council - Singapore Laboratory Accreditation Scheme. Tests/Calibrations marked "Not SAC-SINGLAS Accredited" in this Report are not included in the SAC-SINGLAS Accreditation Schedule for our laboratory.



TABLE OF CONTENTS

TEST SUMMARY

PRODUCT DESCRIPTION

TEST RESULTS

| | |
|---------|---|
| ANNEX A | - TEST INSTRUMENTATION & GENERAL PROCEDURES |
| ANNEX B | - EUT PHOTOGRAPHS / DIAGRAMS Test Setup EUT Photographs |
| ANNEX C | - TISSUE SIMULANT DATA SHEETS |
| ANNEX D | - SAR VALIDATION RESULTS |
| ANNEX E | - MEASUREMENT UNCERTAINTY |
| ANNEX F | - SAR PROBE CALIBRATION CERTIFICATES |
| ANNEX G | - REFERENCES |

TEST SUMMARY

The product was tested in accordance with the following standards.

Test Results Summary

| Test Standards | Description | Pass / Fail |
|---|---|-------------|
| <ul style="list-style-type: none">Supplement C (Edition 01-01) to FCC OET Bulletin 65 (Edition 97-01)ANSI/IEEE Standard C95.1-1993 | SAR Measurement (Wi-Fi 2450MHz) Body worn Configuration Only | Pass * |

1. The worst-case SAR value was found to be **1.430W/kg** which is lower than the maximum limit of 1.60 W/kg, over 1g of tissue. The device conforms to the requirements of the standard when the maximum measured SAR value is less than or equal to the limit.

* Based on spatial peak uncontrolled exposure / general population level:
Head: 1.60 W/kg, over 1g of tissue.
Body: 1.60 W/kg, over 1g of tissue.

Modifications

No modifications were made.



DEVICE DESCRIPTION

DEVICE DESCRIPTION

| | |
|----------------------|---|
| Description | The Equipment Under Test (EUT) is a Wi-Fi Notebook |
| Device Category | Portable Device |
| Exposure Environment | General Population/Uncontrolled exposure |
| Test Device Type | Production Unit |
| Brand Name | Malata |
| Serial Numbers | NIL |
| Model | PC-81007 |
| FCC ID | SMFPC81007 |

DEVICE OPERATING CONFIGURATION

| | |
|-----------------------------------|--|
| Operating Frequencies | <u>Wi-Fi mode</u> Channel 1 (2412Mhz) Channel 2 (2442Mhz) Channel 3 (2462Mhz) |
| Operating Temperature Tolerance | (0 ~ 80) Degree Celsius |
| Operating Voltage Tolerance | (3.3 ±5%) Volt DC |
| Continuous Transmission Tolerance | The EUT shall cause no problem after transmitting for 4 hours. |
| Rated Output Power | 16dBm ± 1.5dBm, Maximum (802.11b) 13dBm ± 1.5dBm, Maximum (802.11g) |
| Antenna Type | PIFA Integrated Antenna |
| EUT Crest Factor | 1.0 |
| Input Power | AC 100~240V, DC 12V, Rechargeable Battery |
| Accessories | Power adapter |

MANUFACTURER

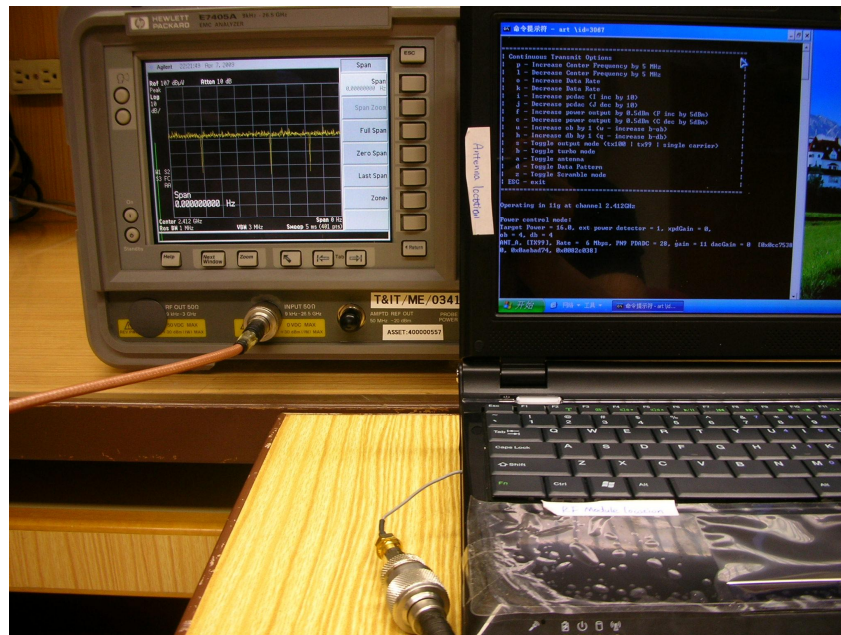
| | |
|----------------------|--|
| Manufacturer Address | Wanlida Group Co., Ltd. No. 618 Jiahe Road Xiamen Fujian, China |
| DID | (+86) 596-7653999-826 |
| Fax | (+86) 596-7662886 |

DEVICE OPERATING CONDITION

DEVICE OPERATING CONDITION

The EUT has dual-antenna connected to a single WiFi module and only one antenna operates at a single time. SAR was evaluated with individual antenna (toggle by software) with the radio transmitting at the 6Mbps and 11Mbps data rate for each mode based on the measured conducted power.

The EUT was put into exercised by using software control operating at the following frequencies 2.412GHz, 2.442GHz and 2.462GHz (lowest, middle and highest channel). The EUT was set to maximum output power level transmission (greater than 90% on-time), this was confirm with a spectrum analyser set to zero span as shown below set up.



TEMPERATURE AND HUMIDITY

802.11b/g (Body)

Ambient Temperature: $24 \pm 1^{\circ}\text{C}$
Tissue Temperature: $24 \pm 1^{\circ}\text{C}$
Humidity: 54% to 59%



TEST RESULTS

The measurement results were obtained with the EUT tested in the conditions described in this report (Annex A).

Table 1 - Body Worn Position SAR Test Results – (Wi-Fi) 6Mbps Antenna A

| Phantom Configuration | Device Test Positions | Antenna Position | SAR (W/kg), average over 1g Tissue Device Test Channel & Frequency | | |
|-------------------------------------|---|------------------|---|-----------------------|-----------------------|
| | | | Channel: 1 2412MHz | Channel: 2 2442MHz | Channel: 3 2462MHz |
| Flat Phantom | EUT Closed (under arm) Touched Phantom | fixed | 0.132 | 0.129 | 0.166 |
| Flat Phantom | EUT Lap Touched Phantom | fixed | 0.219 | 0.050 | 0.039 |
| Output Peak Power (dBm) Before Test | | | 17.33 | 17.93 | 17.50 |
| Output Peak Power (dBm) After Test | | | 17.31 | 17.92 | 17.48 |

Table 2 - Body Worn Position SAR Test Results – (Wi-Fi) 11Mbps Antenna A

| Phantom Configuration | Device Test Positions | Antenna Position | SAR (W/kg), average over 1g Tissue Device Test Channel & Frequency | | |
|-------------------------------------|---|------------------|---|-----------------------|-----------------------|
| | | | Channel: 1 2412MHz | Channel: 2 2442MHz | Channel: 3 2462MHz |
| Flat Phantom | EUT Closed (under arm) Touched Phantom | fixed | 0.159 | 0.145 | 0.186 |
| Flat Phantom | EUT Lap Touched Phantom | fixed | 0.014 | 0.013 | 0.011 |
| Output Peak Power (dBm) Before Test | | | 16.95 | 17.10 | 17.40 |
| Output Peak Power (dBm) After Test | | | 16.92 | 17.05 | 17.39 |



Table 1 - Body Worn Position SAR Test Results – (Wi-Fi) 6Mbps Antenna B

| Phantom Configuration | Device Test Positions | Antenna Position | SAR (W/kg), average over 1g Tissue Device Test Channel & Frequency | | |
|-------------------------------------|---|------------------|---|-----------------------|-----------------------|
| | | | Channel: 1 2412MHz | Channel: 2 2442MHz | Channel: 3 2462MHz |
| Flat Phantom | EUT Closed (under arm) Touched Phantom | fixed | 1.260 | 1.290 | 1.400 |
| Flat Phantom | EUT Lap Touched Phantom | fixed | 0.232 | 0.217 | 0.215 |
| Output Peak Power (dBm) Before Test | | | 16.50 | 16.77 | 16.90 |
| Output Peak Power (dBm) After Test | | | 16.49 | 16.71 | 16.90 |

Table 2 - Body Worn Position SAR Test Results – (Wi-Fi) 11Mbps Antenna B

| Phantom Configuration | Device Test Positions | Antenna Position | SAR (W/kg), average over 1g Tissue Device Test Channel & Frequency | | |
|-------------------------------------|---|------------------|---|-----------------------|-----------------------|
| | | | Channel: 1 2412MHz | Channel: 2 2442MHz | Channel: 3 2462MHz |
| Flat Phantom | EUT Closed (under arm) Touched Phantom | fixed | 1.240 | 1.430 | 0.764 |
| Flat Phantom | EUT Lap Touched Phantom | fixed | 0.012 | 0.013 | 0.012 |
| Output Peak Power (dBm) Before Test | | | 16.44 | 16.61 | 16.20 |
| Output Peak Power (dBm) After Test | | | 16.42 | 16.60 | 16.18 |



Remarks:

1. All modes of operations were investigated and the worst-case SAR levels are reported.
2. A fully charged **Li-Polymer** Battery Description **DC 7.4V, 4000mAh** was used for each mode of operation.
3. For the peak power measurement across all the data rates are listed in page 57 - 60 of this report.
4. For **Wi-Fi 6Mbps-Antenna B** the worst-case SAR value was found to be **1.4W/Kg** (over a 1g tissue) at **Channel 3** which is lower than the maximum limit of 1.60 W/Kg, please refer to the above table.
5. For **Wi-Fi 11Mbps-Antenna B**, the worst-case SAR value was found to be **1.43W/Kg** (over a 1g tissue) at **Channel 2** which is lower than the maximum limit of 1.60 W/Kg, please refer to the above table.
6. The SAR limit of 1.60W/Kg (Spatial Peak level for Uncontrolled Exposure / General Population) is based on the Test Standards:
 - a) Supplement C (Edition 01-01) to FCC OET Bulletin 65 (Edition 97-01)
 - b) ANSI/IEEE Standard C95.1-1993
7. Others consideration used for the above test;
 - i) KDB 248227 dated May 2007
 - ii) KDB 447498 D01 dated Jan 2009



ANTENNA A 6Mbps LAP TEST RESULTS

Ambient Temperature: $24 \pm 1^{\circ}\text{C}$
Tissue Temperature: $24 \pm 1^{\circ}\text{C}$
Humidity: 54% to 59%

Test Laboratory: TUV SUD PSB PTE LTD.

Date/Time: 3/26/2009 11:36:03 AM

File Name: [EUT Lap_Ch 1_2412MHz_6mbps.da4](#)

Program Name: EUT Lap_Ch 1_2412MHz_Data 1.da4

Phantom section: Flat Section

DUT: Notebook

Communication System: 2450 Mhz

Frequency: 2412 MHz

Duty Cycle: 1:1

Medium: Body 2450 MHz Medium parameters used: $f = 2450\text{ MHz}$; $\sigma = 1.97\text{ mho/m}$; $\epsilon_r = 52.1$; $\rho = 1000\text{ kg/m}^3$

DASY4 Configuration:

Electronics: DAE4 Sn627

Calibrated: 6/14/2007

Phantom: SAM 12

Measurement SW: DASY4, V4.7 Build 80

Probe: EX3DV4 - SN3541

ConvF(7.07, 7.07, 7.07)

Calibrated: 7/13/2007

Post processing SW: SEMCAD, V1.8 Build 186

Sensor-Surface: 4mm (Mechanical Surface Detection)

EUT Rear_Ch 1_2412MHz_Data 1/Area Scan (14x17x1): Measurement grid:

$dx=5\text{mm}$, $dy=5\text{mm}$

Maximum value of SAR (measured) = 0.185 mW/g

EUT Rear_Ch 1_2412MHz_Data 1/Zoom Scan (7x7x7)/Cube 0: Measurement

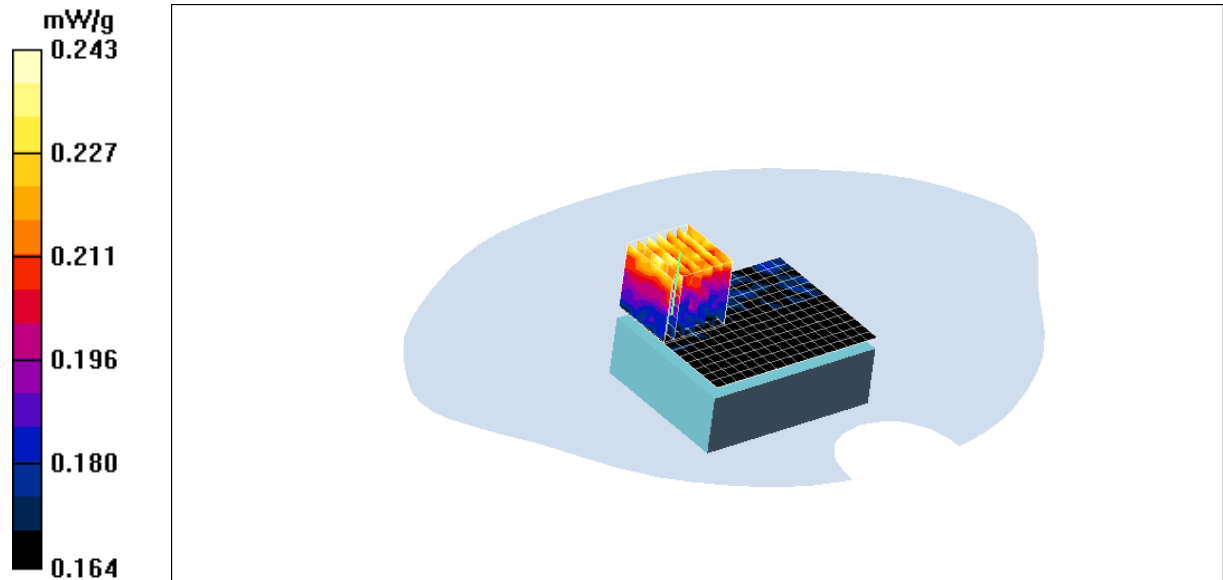
grid: $dx=5\text{mm}$, $dy=5\text{mm}$, $dz=5\text{mm}$

Reference Value = 8.55 V/m; Power Drift = 1.01 dB

Peak SAR (extrapolated) = 0.243 W/kg

SAR(1 g) = 0.219 mW/g; SAR(10 g) = 0.204 mW/g

Maximum value of SAR (measured) = 0.243 mW/g





ANTENNA A 6Mbps LAP TEST RESULTS

Ambient Temperature: $24 \pm 1^{\circ}\text{C}$
Tissue Temperature: $24 \pm 1^{\circ}\text{C}$
Humidity: 54% to 59%

Test Laboratory: TUV SUD PSB PTE LTD.

Date/Time: 3/24/2009 3:34:49 PM

File Name: [EUT Lap_Ch 2_2442MHz_6mbps.da4](#)

Program Name: EUT Lap_Ch 2_2442MHz_Data 1.da4

Phantom section: Flat Section

DUT: Notebook

Communication System: 2450 Mhz

Frequency: 2442 MHz

Duty Cycle: 1:1

Medium: Body 2450 MHz Medium parameters used: $f = 2450\text{ MHz}$; $\sigma = 1.97\text{ mho/m}$; $\epsilon_r = 52.1$; $\rho = 1000\text{ kg/m}^3$

DASY4 Configuration:

Electronics: DAE4 Sn627

Calibrated: 6/14/2007

Phantom: SAM 12

Measurement SW: DASY4, V4.7 Build 80

Probe: EX3DV4 - SN3541

ConvF(7.07, 7.07, 7.07)

Calibrated: 7/13/2007

Postprocessing SW: SEMCAD, V1.8 Build 186

Sensor-Surface: 4mm (Mechanical Surface Detection)

EUT Rear_Ch 2_2442MHz_Data 1/Area Scan (13x18x1): Measurement grid:

$dx=5\text{mm}$, $dy=5\text{mm}$

Maximum value of SAR (measured) = 0.046 mW/g

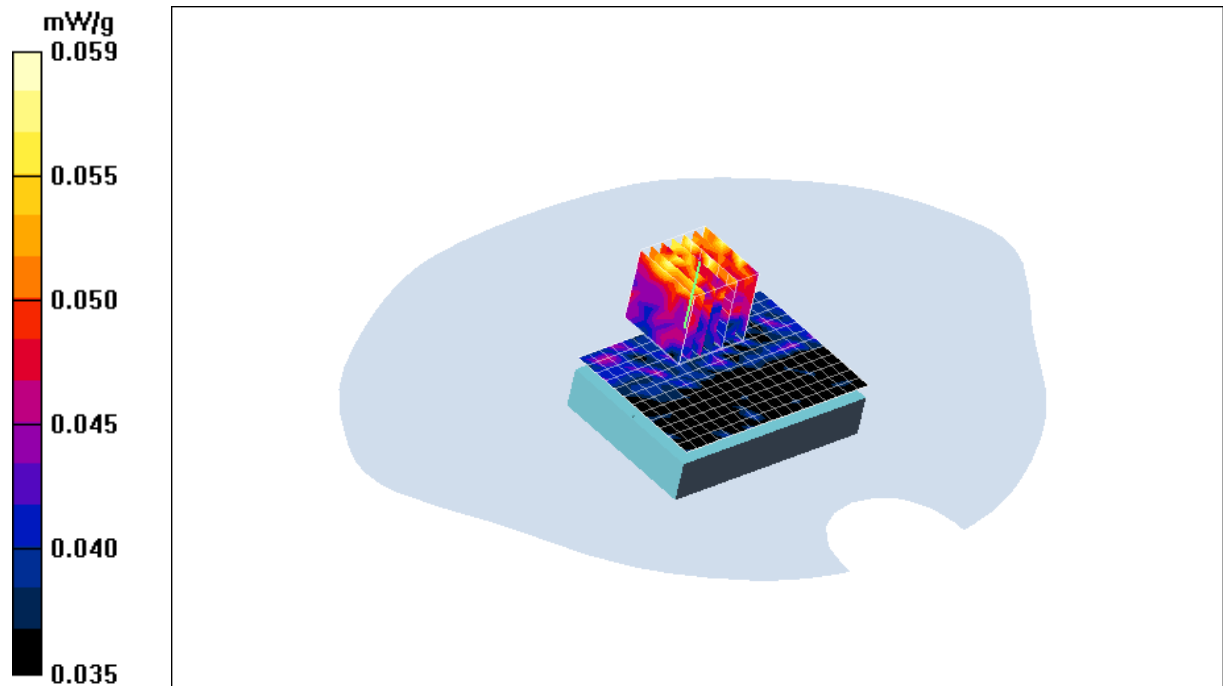
EUT Rear_Ch 2_2442MHz_Data 1/Zoom Scan (7x7x7)/Cube 0: Measurement grid: $dx=5\text{mm}$, $dy=5\text{mm}$, $dz=5\text{mm}$

Reference Value = 3.64 V/m; Power Drift = 1.80 dB

Peak SAR (extrapolated) = 0.059 W/kg

SAR(1 g) = 0.050 mW/g; SAR(10 g) = 0.046 mW/g

Maximum value of SAR (measured) = 0.059 mW/g





ANTENNA A 6Mbps LAP TEST RESULTS

Ambient Temperature: $24 \pm 1^{\circ}\text{C}$
Tissue Temperature: $24 \pm 1^{\circ}\text{C}$
Humidity: 54% to 59%

Test Laboratory: TUV SUD PSB PTE LTD.

Date/Time: 3/24/2009 4:18:25 PM

File Name: [EUT Lap Ch 3_2462MHz_6mbps.da4](#)

Program Name: EUT Lap _Ch 3_2462MHz_Data 1.da4

Phantom section: Flat Section

DUT: Notebook

Communication System: 2450 Mhz

Frequency: 2442 MHz

Duty Cycle: 1:1

Medium: Body 2450 MHz Medium parameters used: $f = 2450\text{ MHz}$; $\sigma = 1.97\text{ mho/m}$; $\epsilon_r = 52.1$; $\rho = 1000\text{ kg/m}^3$

DASY4 Configuration:

Electronics: DAE4 Sn627

Calibrated: 6/14/2007

Phantom: SAM 12

Measurement SW: DASY4, V4.7 Build 80

Probe: EX3DV4 - SN3541

ConvF(7.07, 7.07, 7.07)

Calibrated: 7/13/2007

Post processing SW: SEMCAD, V1.8 Build 186

Sensor-Surface: 4mm (Mechanical Surface Detection)

EUT Rear_Ch 3_2462MHz_Data 1/Area Scan (13x18x1): Measurement grid:

$dx=5\text{mm}$, $dy=5\text{mm}$

Maximum value of SAR (measured) = 0.039 mW/g

EUT Rear_Ch 3_2462MHz_Data 1/Zoom Scan (7x7x7)/Cube 0: Measurement grid: $dx=5\text{mm}$, $dy=5\text{mm}$, $dz=5\text{mm}$

Reference Value = 3.51 V/m; Power Drift = 1.54 dB

Peak SAR (extrapolated) = 0.045 W/kg

SAR(1 g) = 0.039 mW/g; SAR(10 g) = 0.036 mW/g

Maximum value of SAR (measured) = 0.045 mW/g





ANTENNA A 6Mbps Closed TEST RESULTS

Ambient Temperature: $24 \pm 1^{\circ}\text{C}$
Tissue Temperature: $24 \pm 1^{\circ}\text{C}$
Humidity: 54% to 59%

Test Laboratory: TUV SUD PSB PTE LTD.

Date/Time: 3/27/2009 11:12:54 AM

File Name: [EUT closed_Ch 1_2412MHz_6mbps.da4](#)

Program Name: EUT closed _Ch 1_2412MHz_Data 1.da4

Phantom section: Flat Section

DUT: Notebook

Communication System: 2450 Mhz

Frequency: 2412 MHz

Duty Cycle: 1:1

Medium: Body 2450 MHz Medium parameters used: $f = 2450\text{ MHz}$; $\sigma = 1.97\text{ mho/m}$; $\epsilon_r = 52.1$; $\rho = 1000\text{ kg/m}^3$

DASY4 Configuration:

Electronics: DAE4 Sn627

Calibrated: 6/14/2007

Phantom: SAM 12

Measurement SW: DASY4, V4.7 Build 80

Probe: EX3DV4 - SN3541

ConvF(7.07, 7.07, 7.07)

Calibrated: 7/13/2007

Post processing SW: SEMCAD, V1.8 Build 186

Sensor-Surface: 4mm (Mechanical Surface Detection)

EUT closed_Ch 1_2412MHz_Data 1/Area Scan (11x41x1): Measurement grid:
 $dx=5\text{mm}$, $dy=5\text{mm}$

Maximum value of SAR (measured) = 0.149 mW/g

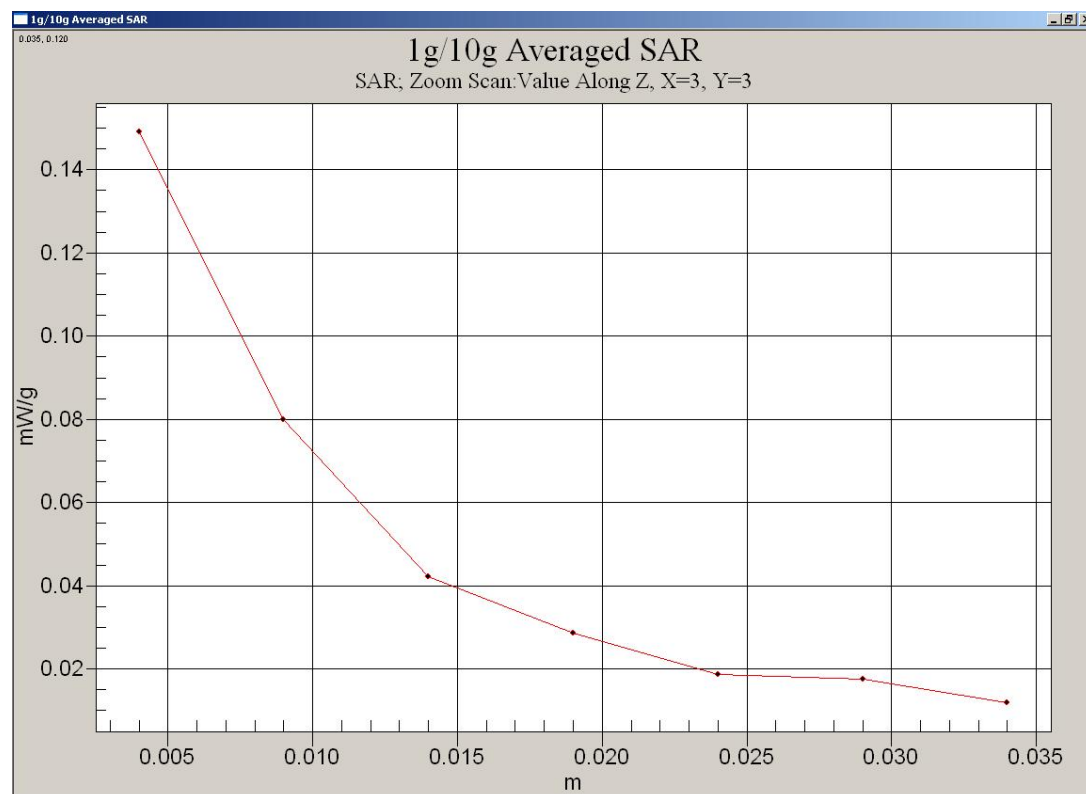
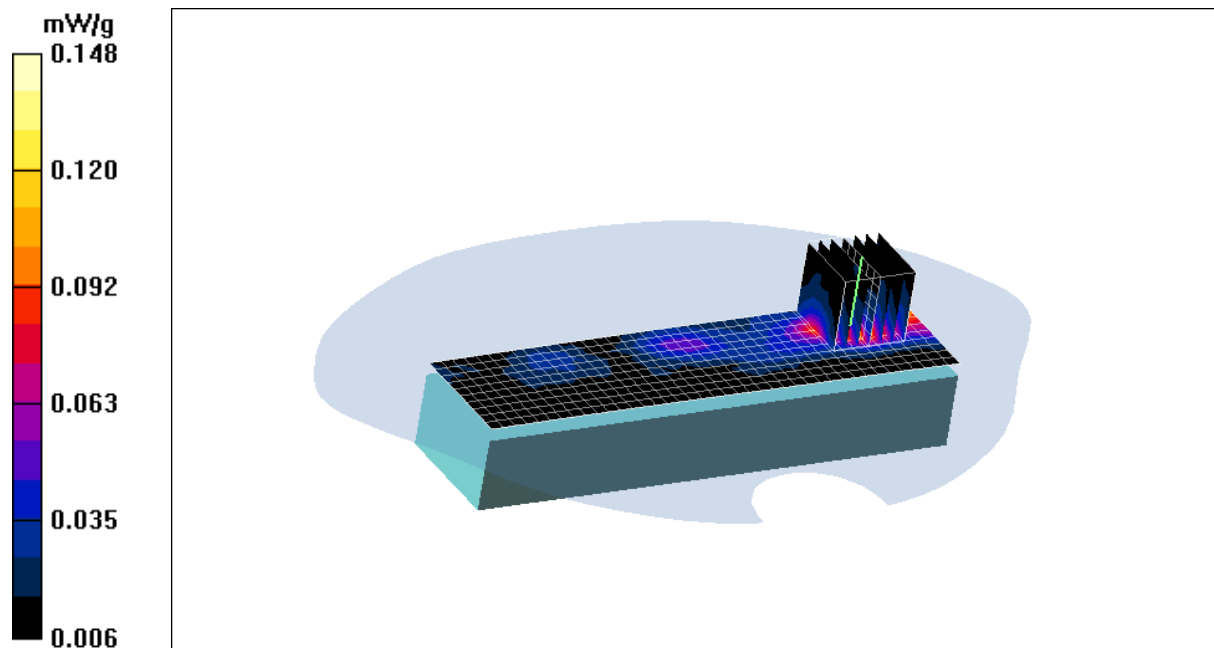
EUT closed_Ch 1_2412MHz_Data 1/Zoom Scan (7x7x7)/Cube 0: Measurement
grid: $dx=5\text{mm}$, $dy=5\text{mm}$, $dz=5\text{mm}$

Reference Value = 3.63 V/m; Power Drift = -0.361 dB

Peak SAR (extrapolated) = 0.251 W/kg

SAR(1 g) = 0.132 mW/g; SAR(10 g) = 0.068 mW/g

Maximum value of SAR (measured) = 0.148 mW/g





ANTENNA A 6Mbps Closed TEST RESULTS

Ambient Temperature: $24 \pm 1^{\circ}\text{C}$
Tissue Temperature: $24 \pm 1^{\circ}\text{C}$
Humidity: 54% to 59%

Test Laboratory: TUV SUD PSB PTE LTD.

Date/Time: 3/27/2009 10:00:21 AM

File Name: [EUT closed_Ch 2_2442MHz_6mbps.da4](#)

Program Name: EUT closed _Ch 2_2442MHz_Data 1.da4

Phantom section: Flat Section

DUT: Notebook

Communication System: 2450 Mhz

Frequency: 2442 MHz

Duty Cycle: 1:1

Medium: Body 2450 MHz Medium parameters used: $f = 2450\text{ MHz}$; $\sigma = 1.97\text{ mho/m}$; $\epsilon_r = 52.1$; $\rho = 1000\text{ kg/m}^3$

DASY4 Configuration:

Electronics: DAE4 Sn627 Calibrated: 6/14/2007

Phantom: SAM 12 Measurement SW: DASY4, V4.7 Build 80

Probe: EX3DV4 - SN3541 ConvF(7.07, 7.07, 7.07) Calibrated: 7/13/2007

Post processing SW: SEMCAD, V1.8 Build 186

Sensor-Surface: 4mm (Mechanical Surface Detection)

EUT closed_Ch 2_2442MHz_Data 1/Area Scan (11x41x1): Measurement grid:
 $dx=5\text{mm}$, $dy=5\text{mm}$

Maximum value of SAR (measured) = 0.143 mW/g

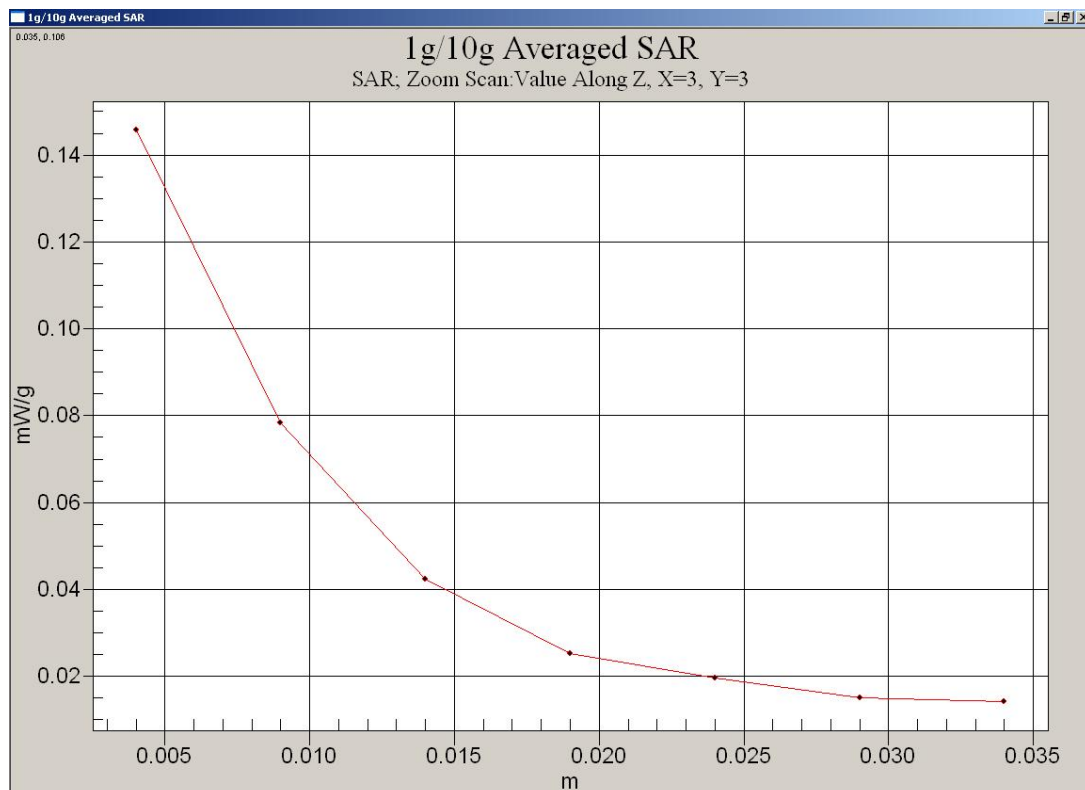
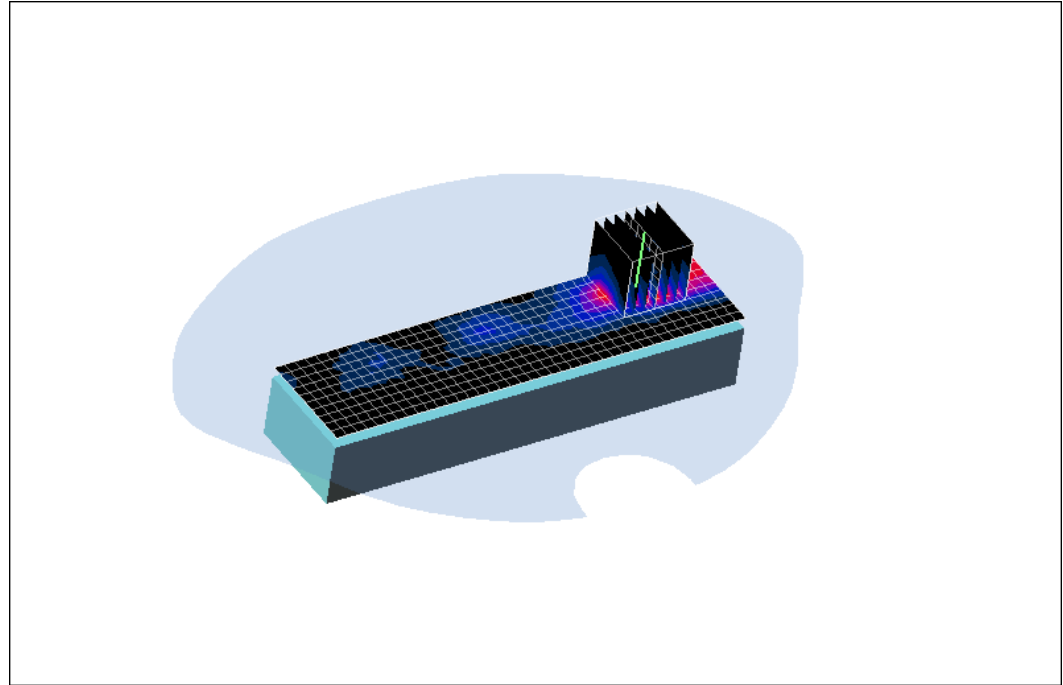
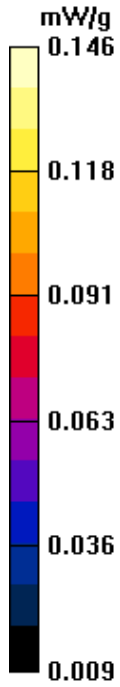
EUT closed_Ch 2_2442MHz_Data 1/Zoom Scan (7x7x7)/Cube 0: Measurement
grid: $dx=5\text{mm}$, $dy=5\text{mm}$, $dz=5\text{mm}$

Reference Value = 3.60 V/m; Power Drift = -0.246 dB

Peak SAR (extrapolated) = 0.259 W/kg

SAR(1 g) = 0.129 mW/g; SAR(10 g) = 0.065 mW/g

Maximum value of SAR (measured) = 0.146 mW/g





ANTENNA A 6Mbps Closed TEST RESULTS

Ambient Temperature: $24 \pm 1^{\circ}\text{C}$
Tissue Temperature: $24 \pm 1^{\circ}\text{C}$
Humidity: 54% to 59%

Test Laboratory: TUV SUD PSB PTE LTD.

Date/Time: 4/8/2009 10:09:57 AM

File Name: [EUT Closed_Ch 3_2462MHz_6mbps.da4](#)

Program Name: EUT Closed_Ch 3_2462MHz_Data 1.da4

Phantom section: Flat Section

DUT: Notebook

Communication System: 2450 Mhz

Frequency: 2462 MHz

Duty Cycle: 1:1

Medium: Body 2450 MHz Medium parameters used: $f = 2450\text{ MHz}$; $\sigma = 1.97\text{ mho/m}$; $\epsilon_r = 52.1$; $\rho = 1000\text{ kg/m}^3$

DASY4 Configuration:

Electronics: DAE4 Sn627

Calibrated: 6/14/2007

Phantom: SAM 12

Measurement SW: DASY4, V4.7 Build 80

Probe: EX3DV4 - SN3541

ConvF(7.07, 7.07, 7.07)

Calibrated: 7/13/2007

Post processing SW: SEMCAD, V1.8 Build 186

Sensor-Surface: 4mm (Mechanical Surface Detection)

EUT Front_Ch 3_2462MHz_Data 1/Area Scan (11x41x1): Measurement grid:

$dx=5\text{mm}$, $dy=5\text{mm}$

Maximum value of SAR (measured) = 0.181 mW/g

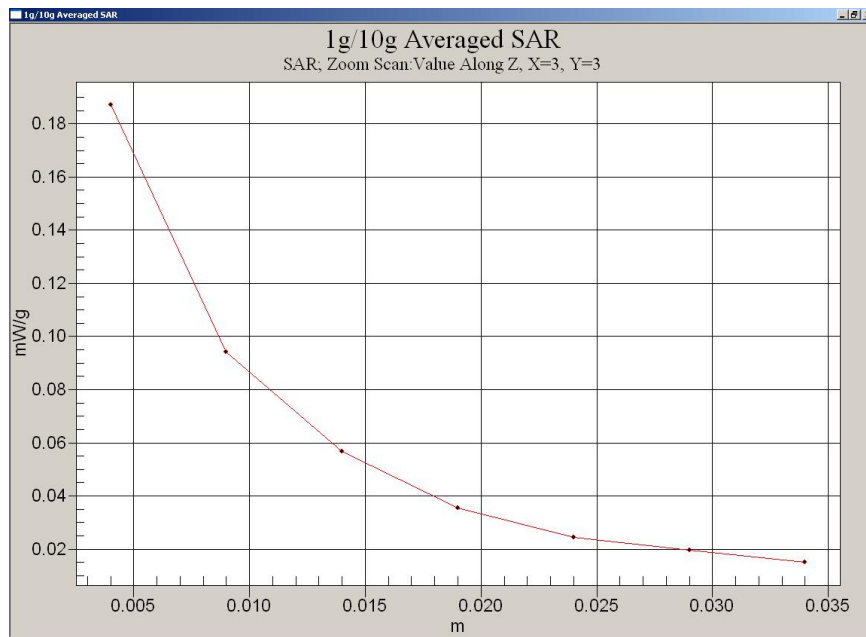
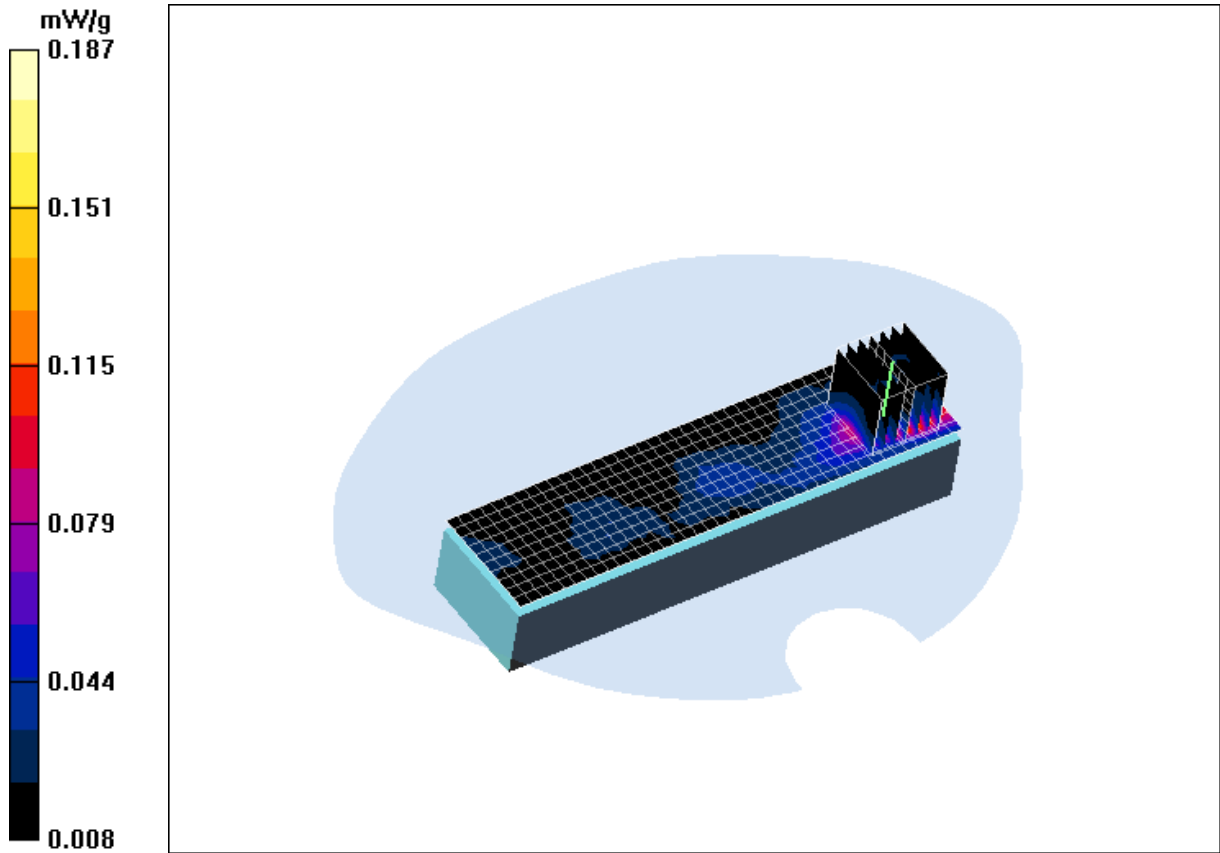
EUT Front_Ch 3_2462MHz_Data 1/Zoom Scan (7x7x7)/Cube 0: Measurement grid: $dx=5\text{mm}$, $dy=5\text{mm}$, $dz=5\text{mm}$

Reference Value = 4.22 V/m; Power Drift = 0.467 dB

Peak SAR (extrapolated) = 0.350 W/kg

SAR(1 g) = 0.166 mW/g; SAR(10 g) = 0.081 mW/g

Maximum value of SAR (measured) = 0.187 mW/g





ANTENNA B 6Mbps LAP TEST RESULTS

Ambient Temperature: $24 \pm 1^{\circ}\text{C}$
Tissue Temperature: $24 \pm 1^{\circ}\text{C}$
Humidity: 54% to 59%

Test Laboratory: TUV SUD PSB PTE LTD.

Date/Time: 3/26/2009 12:15:18 PM

File Name: [EUT Lap_Ch 1_2412MHz_6mbps.da4](#)

Program Name: EUT Lap_Ch 1_2412MHz_Data 1.da4

Phantom section: Flat Section

DUT: Notebook

Communication System: 2450 Mhz

Frequency: 2412 MHz

Duty Cycle: 1:1

Medium: Body 2450 MHz Medium parameters used: $f = 2450\text{ MHz}$; $\sigma = 1.97\text{ mho/m}$; $\epsilon_r = 52.1$; $\rho = 1000\text{ kg/m}^3$

DASY4 Configuration:

Electronics: DAE4 Sn627

Calibrated: 6/14/2007

Phantom: SAM 12

Measurement SW: DASY4, V4.7 Build 80

Probe: EX3DV4 - SN3541

ConvF(7.07, 7.07, 7.07)

Calibrated: 7/13/2007

Post processing SW: SEMCAD, V1.8 Build 186

Sensor-Surface: 4mm (Mechanical Surface Detection)

EUT Rear_Ch 1_2412MHz_Data 1/Area Scan (14x17x1): Measurement grid:

$dx=5\text{mm}$, $dy=5\text{mm}$

Maximum value of SAR (measured) = 0.201 mW/g

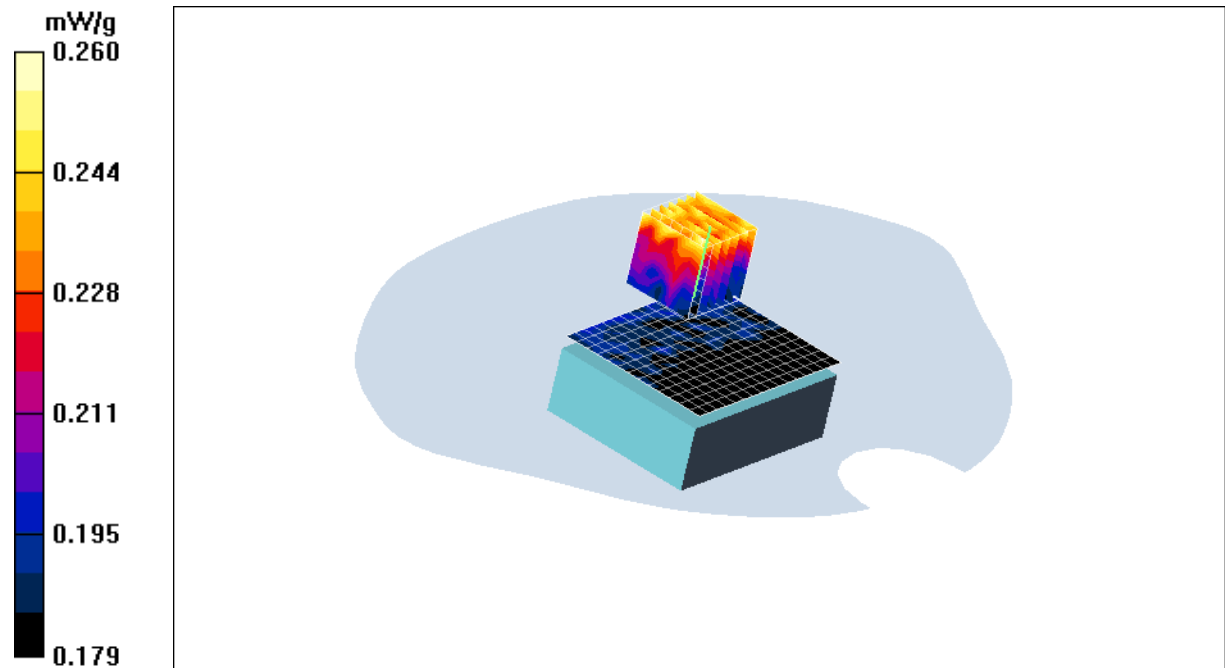
EUT Rear_Ch 1_2412MHz_Data 1/Zoom Scan (7x7x7)/Cube 0: Measurement grid: $dx=5\text{mm}$, $dy=5\text{mm}$, $dz=5\text{mm}$

Reference Value = 9.01 V/m ; Power Drift = 0.720 dB

Peak SAR (extrapolated) = 0.260 W/kg

SAR(1 g) = 0.232 mW/g ; SAR(10 g) = 0.219 mW/g

Maximum value of SAR (measured) = 0.260 mW/g





ANTENNA B 6Mbps LAP TEST RESULTS

Ambient Temperature: $24 \pm 1^{\circ}\text{C}$
Tissue Temperature: $24 \pm 1^{\circ}\text{C}$
Humidity: 54% to 59%

Test Laboratory: TUV SUD PSB PTE LTD.

Date/Time: 3/26/2009 1:18:57 PM

File Name: [EUT Lap_Ch 2_2442MHz_6mbps.da4](#)

Program Name: EUT Lap_Ch 2_2442MHz_Data 1.da4

Phantom section: Flat Section

DUT: Notebook

Communication System: 2450 Mhz

Frequency: 2442 MHz

Duty Cycle: 1:1

Medium: Body 2450 MHz Medium parameters used: $f = 2450\text{ MHz}$; $\sigma = 1.97\text{ mho/m}$; $\epsilon_r = 52.1$; $\rho = 1000\text{ kg/m}^3$

DASY4 Configuration:

Electronics: DAE4 Sn627

Calibrated: 6/14/2007

Phantom: SAM 12

Measurement SW: DASY4, V4.7 Build 80

Probe: EX3DV4 - SN3541

ConvF(7.07, 7.07, 7.07)

Calibrated: 7/13/2007

Post processing SW: SEMCAD, V1.8 Build 186

Sensor-Surface: 4mm (Mechanical Surface Detection)

EUT Rear_Ch 2_2442MHz_Data 1/Area Scan (13x18x1): Measurement grid:

$dx=5\text{mm}$, $dy=5\text{mm}$

Maximum value of SAR (measured) = 0.185 mW/g

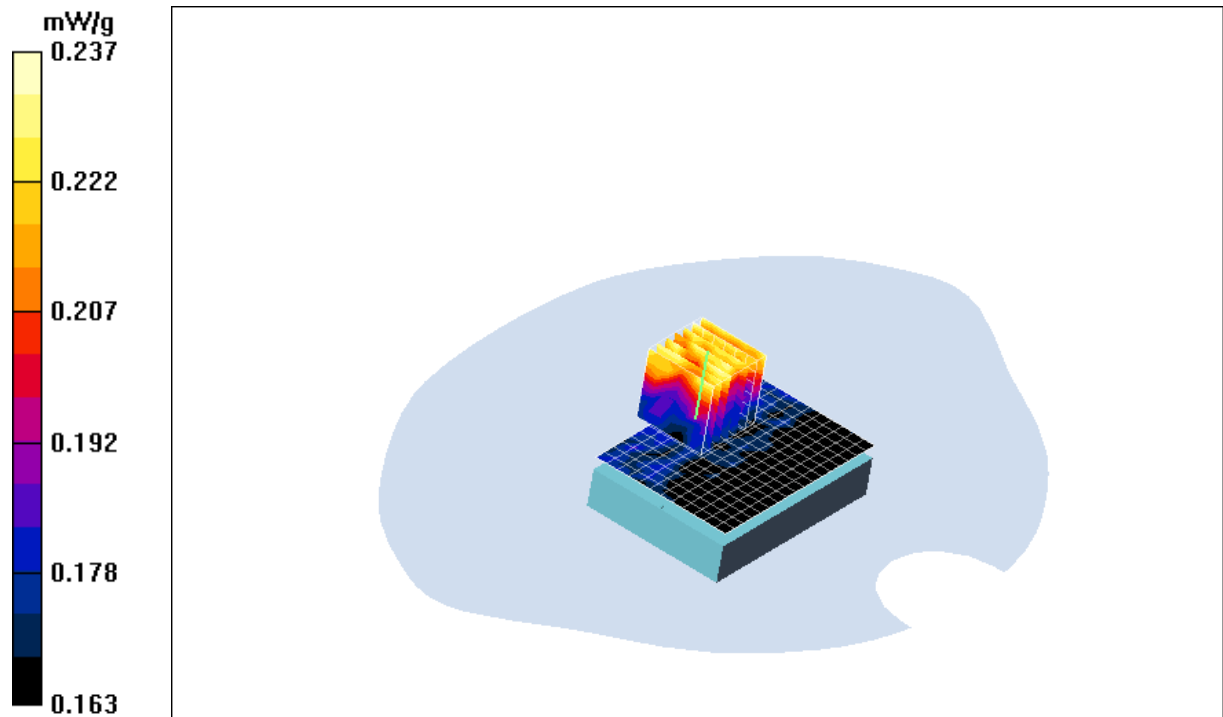
EUT Rear_Ch 2_2442MHz_Data 1/Zoom Scan (7x7x7)/Cube 0: Measurement grid: $dx=5\text{mm}$, $dy=5\text{mm}$, $dz=5\text{mm}$

Reference Value = 8.67 V/m; Power Drift = 0.592 dB

Peak SAR (extrapolated) = 0.237 W/kg

SAR(1 g) = 0.217 mW/g; SAR(10 g) = 0.199 mW/g

Maximum value of SAR (measured) = 0.237 mW/g





ANTENNA B 6Mbps LAP TEST RESULTS

Ambient Temperature: $24 \pm 1^{\circ}\text{C}$
Tissue Temperature: $24 \pm 1^{\circ}\text{C}$
Humidity: 54% to 59%

Test Laboratory: TUV SUD PSB PTE LTD.

Date/Time: 3/26/2009 2:41:02 PM

File Name: [EUT Lap_Ch 3_2462MHz_6mbps.da4](#)

Program Name: EUT Lap_Ch 3_2462MHz_Data 1.da4

Phantom section: Flat Section

DUT: Notebook

Communication System: 2450 Mhz

Frequency: 2442 MHz

Duty Cycle: 1:1

Medium: Body 2450 MHz Medium parameters used: $f = 2450\text{ MHz}$; $\sigma = 1.97\text{ mho/m}$; $\epsilon_r = 52.1$; $\rho = 1000\text{ kg/m}^3$

DASY4 Configuration:

Electronics: DAE4 Sn627

Calibrated: 6/14/2007

Phantom: SAM 12

Measurement SW: DASY4, V4.7 Build 80

Probe: EX3DV4 - SN3541

ConvF(7.07, 7.07, 7.07)

Calibrated: 7/13/2007

Post processing SW: SEMCAD, V1.8 Build 186

Sensor-Surface: 4mm (Mechanical Surface Detection)

EUT Rear_Ch 3_2462MHz_Data 1/Area Scan (13x18x1): Measurement grid:

$dx=5\text{mm}$, $dy=5\text{mm}$

Maximum value of SAR (measured) = 0.193 mW/g

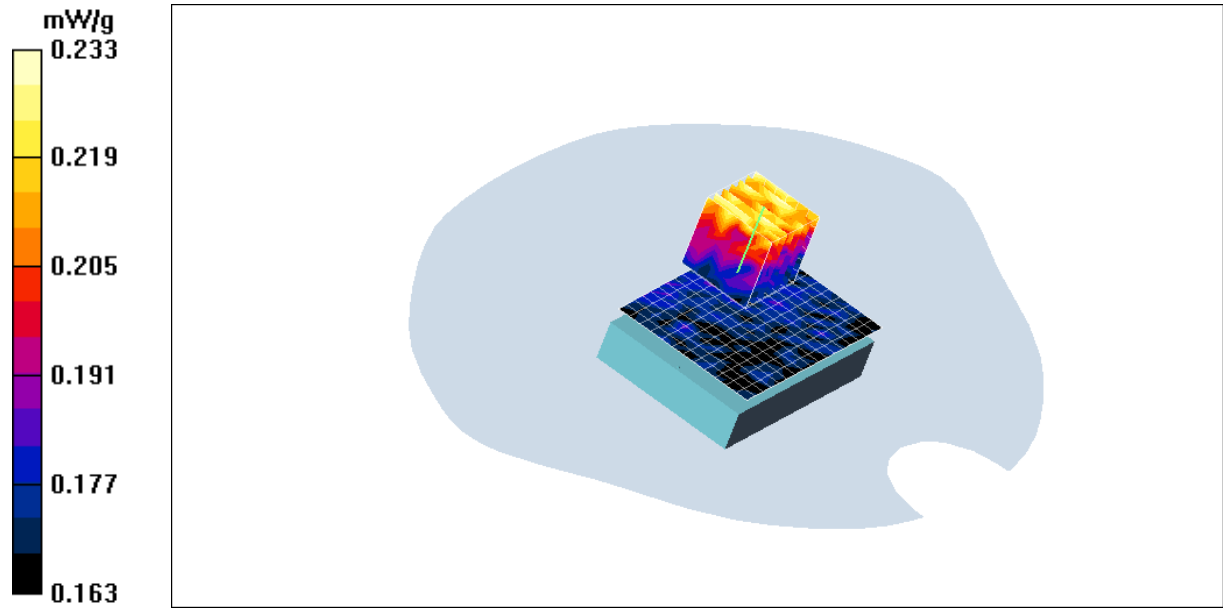
EUT Rear_Ch 3_2462MHz_Data 1/Zoom Scan (7x7x7)/Cube 0: Measurement grid: $dx=5\text{mm}$, $dy=5\text{mm}$, $dz=5\text{mm}$

Reference Value = 9.39 V/m; Power Drift = -0.219 dB

Peak SAR (extrapolated) = 0.233 W/kg

SAR(1 g) = 0.215 mW/g; SAR(10 g) = 0.200 mW/g

Maximum value of SAR (measured) = 0.233 mW/g





ANTENNA B 6Mbps Closed TEST RESULTS

Ambient Temperature: $24 \pm 1^{\circ}\text{C}$
Tissue Temperature: $24 \pm 1^{\circ}\text{C}$
Humidity: 54% to 59%

Test Laboratory: TUV SUD PSB PTE LTD.

Date/Time: 3/26/2009 4:48:04 PM

File Name: [EUT front closed_Ch 1_2412MHz_6mbps.da4](#)

Program Name: EUT closed_Ch 1_2412MHz_Data 1.da4

Phantom section: Flat Section

DUT: Notebook

Communication System: 2450 Mhz

Frequency: 2412 MHz

Duty Cycle: 1:1

Medium: Body 2450 MHz Medium parameters used: $f = 2450\text{ MHz}$; $\sigma = 1.97\text{ mho/m}$; $\epsilon_r = 52.1$; $\rho = 1000\text{ kg/m}^3$

DASY4 Configuration:

Electronics: DAE4 Sn627

Calibrated: 6/14/2007

Phantom: SAM 12

Measurement SW: DASY4, V4.7 Build 80

Probe: EX3DV4 - SN3541

ConvF(7.07, 7.07, 7.07)

Calibrated: 7/13/2007

Post processing SW: SEMCAD, V1.8 Build 186

Sensor-Surface: 4mm (Mechanical Surface Detection)

EUT closed_Ch 1_2412MHz_Data 1/Area Scan (8x31x1): Measurement grid:

$dx=5\text{mm}$, $dy=5\text{mm}$

Maximum value of SAR (measured) = 1.46 mW/g

EUT closed_Ch 1_2412MHz_Data 1/Zoom Scan (7x7x7)/Cube 0: Measurement

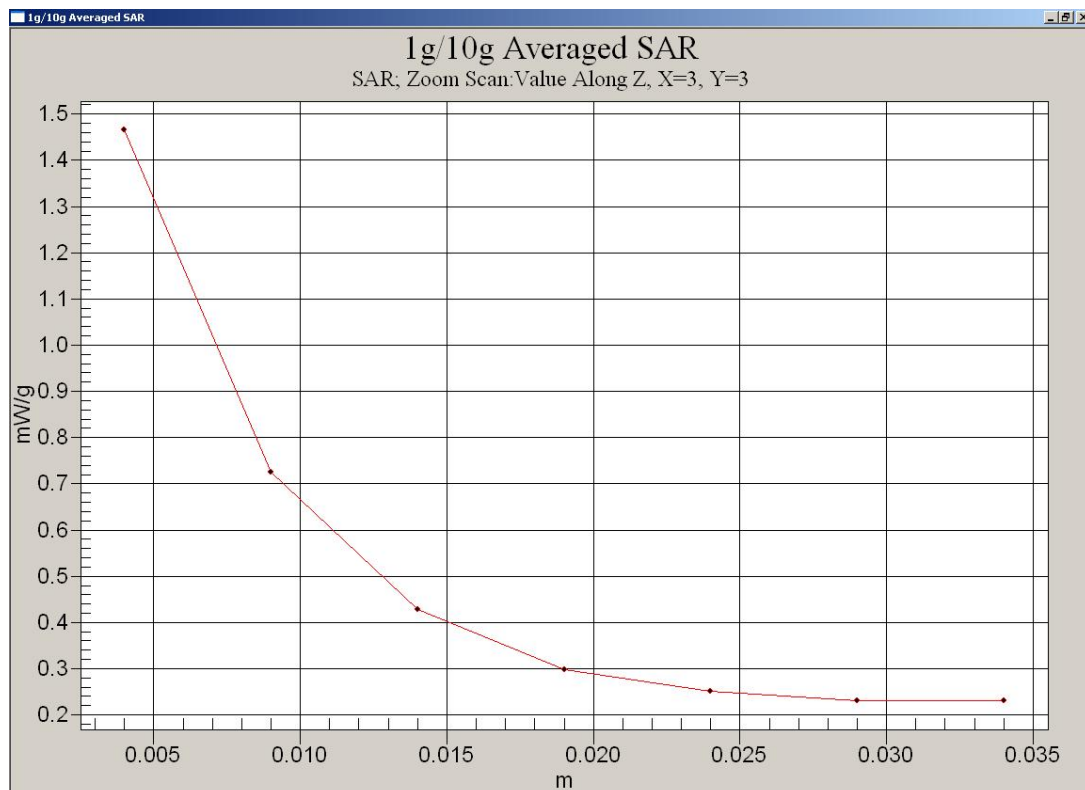
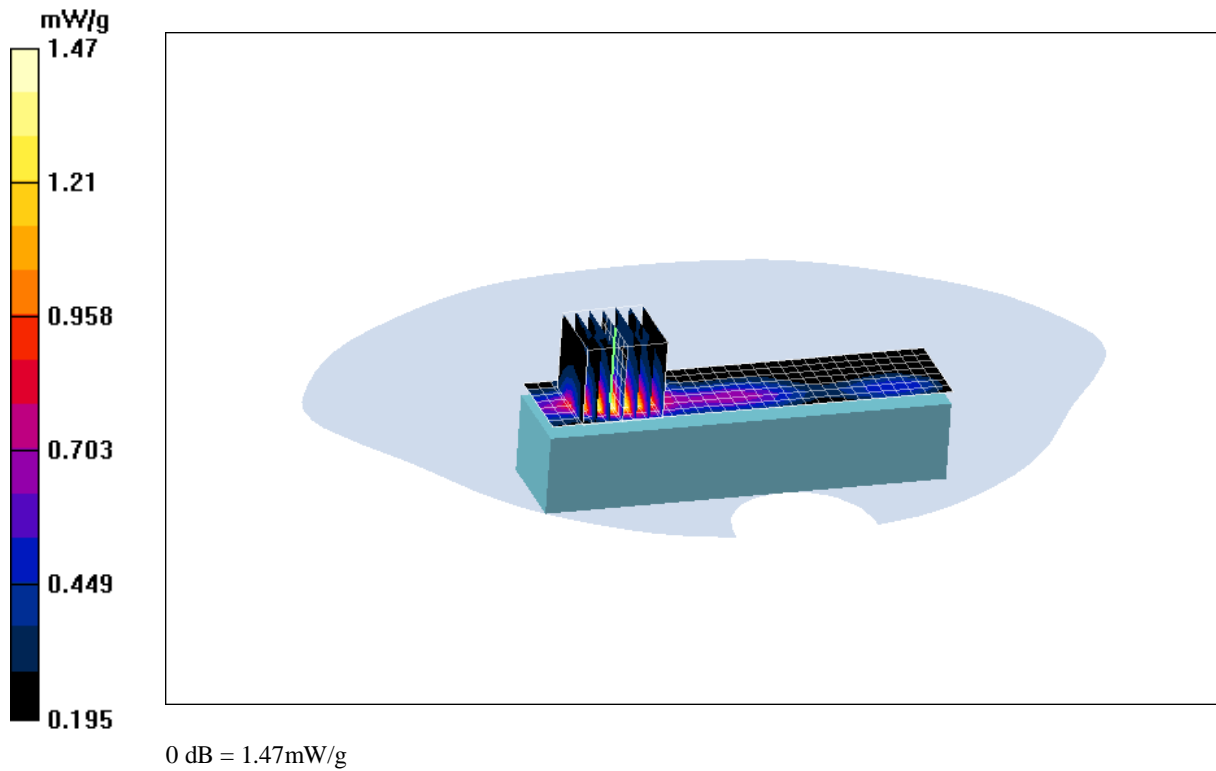
grid: $dx=5\text{mm}$, $dy=5\text{mm}$, $dz=5\text{mm}$

Reference Value = 12.3 V/m ; Power Drift = 0.191 dB

Peak SAR (extrapolated) = 3.30 W/kg

SAR(1 g) = 1.26 mW/g ; SAR(10 g) = 0.582 mW/g

Maximum value of SAR (measured) = 1.47 mW/g





ANTENNA B 6Mbps Closed TEST RESULTS

Ambient Temperature: $24 \pm 1^{\circ}\text{C}$
Tissue Temperature: $24 \pm 1^{\circ}\text{C}$
Humidity: 54% to 59%

Test Laboratory: TUV SUD PSB PTE LTD.

Date/Time: 3/26/2009 4:08:14 PM

File Name: [EUT closed_Ch 2_2442MHz_6mbps.da4](#)

Program Name: EUT closed_Ch 2_2442MHz_Data 1.da4

Phantom section: Flat Section

DUT: Notebook

Communication System: 2450 Mhz

Frequency: 2442 MHz

Duty Cycle: 1:1

Medium: Body 2450 MHz Medium parameters used: $f = 2450\text{ MHz}$; $\sigma = 1.97\text{ mho/m}$; $\epsilon_r = 52.1$; $\rho = 1000\text{ kg/m}^3$

DASY4 Configuration:

Electronics: DAE4 Sn627

Calibrated: 6/14/2007

Phantom: SAM 12

Measurement SW: DASY4, V4.7 Build 80

Probe: EX3DV4 - SN3541

ConvF(7.07, 7.07, 7.07)

Calibrated: 7/13/2007

Post processing SW: SEMCAD, V1.8 Build 186

Sensor-Surface: 4mm (Mechanical Surface Detection)

EUT closed_Ch 2_2442MHz_Data 1/Area Scan (8x31x1): Measurement grid:

$dx=5\text{mm}$, $dy=5\text{mm}$

Maximum value of SAR (measured) = 1.51 mW/g

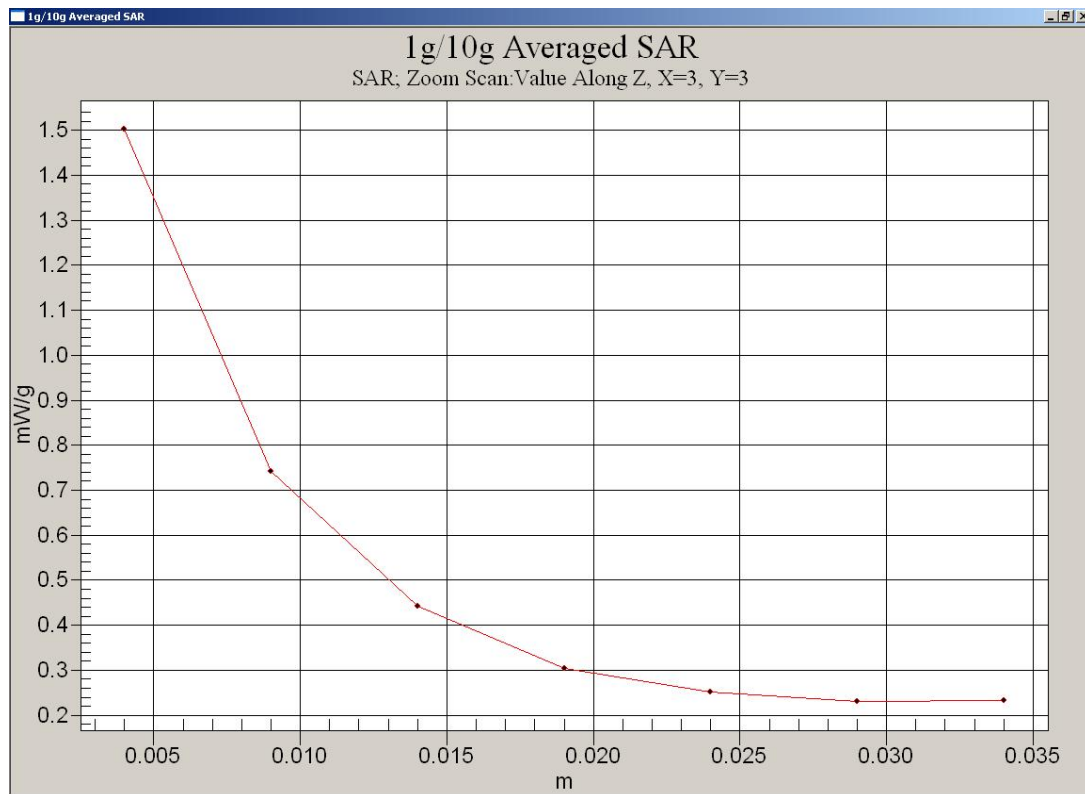
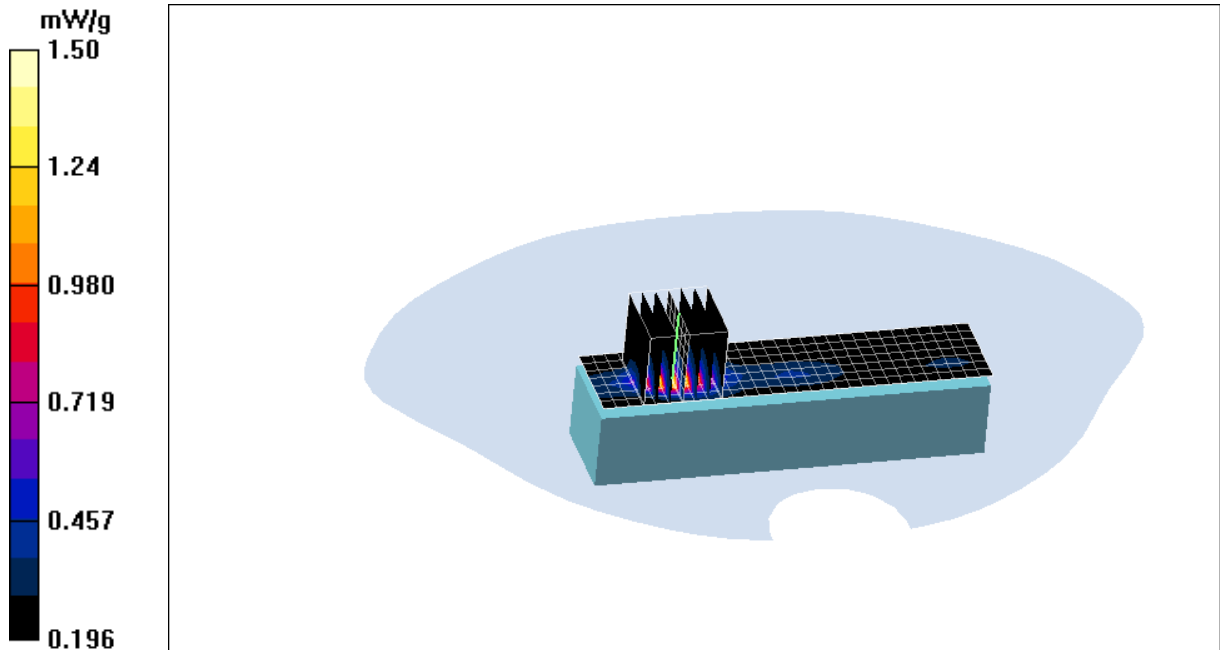
EUT closed_Ch 2_2442MHz_Data 1/Zoom Scan (7x7x7)/Cube 0: Measurement grid: $dx=5\text{mm}$, $dy=5\text{mm}$, $dz=5\text{mm}$

Reference Value = 12.1 V/m; Power Drift = 0.205 dB

Peak SAR (extrapolated) = 3.43 W/kg

SAR(1 g) = 1.29 mW/g; SAR(10 g) = 0.591 mW/g

Maximum value of SAR (measured) = 1.50 mW/g





ANTENNA B 6Mbps Closed TEST RESULTS

Ambient Temperature: $24 \pm 1^{\circ}\text{C}$
Tissue Temperature: $24 \pm 1^{\circ}\text{C}$
Humidity: 54% to 59%

Test Laboratory: TUV SUD PSB PTE LTD.

Date/Time: 3/26/2009 3:25:16 PM

File Name: [EUT closed_Ch 3_2462MHz_6mbps.da4](#)

Program Name: EUT closed_Ch 3_2462MHz_Data 1.da4

Phantom section: Flat Section

DUT: Notebook

Communication System: 2450 Mhz

Frequency: 2462 MHz

Duty Cycle: 1:1

Medium: Body 2450 MHz Medium parameters used: $f = 2450\text{ MHz}$; $\sigma = 1.97\text{ mho/m}$; $\epsilon_r = 52.1$; $\rho = 1000\text{ kg/m}^3$

DASY4 Configuration:

Electronics: DAE4 Sn627

Calibrated: 6/14/2007

Phantom: SAM 12

Measurement SW: DASY4, V4.7 Build 80

Probe: EX3DV4 - SN3541

ConvF(7.07, 7.07, 7.07)

Calibrated: 7/13/2007

Post processing SW: SEMCAD, V1.8 Build 186

Sensor-Surface: 4mm (Mechanical Surface Detection)

EUT Front_Ch 3_2462MHz_Data 1/Area Scan (8x31x1): Measurement grid:

$dx=5\text{mm}$, $dy=5\text{mm}$

Maximum value of SAR (measured) = 1.60 mW/g

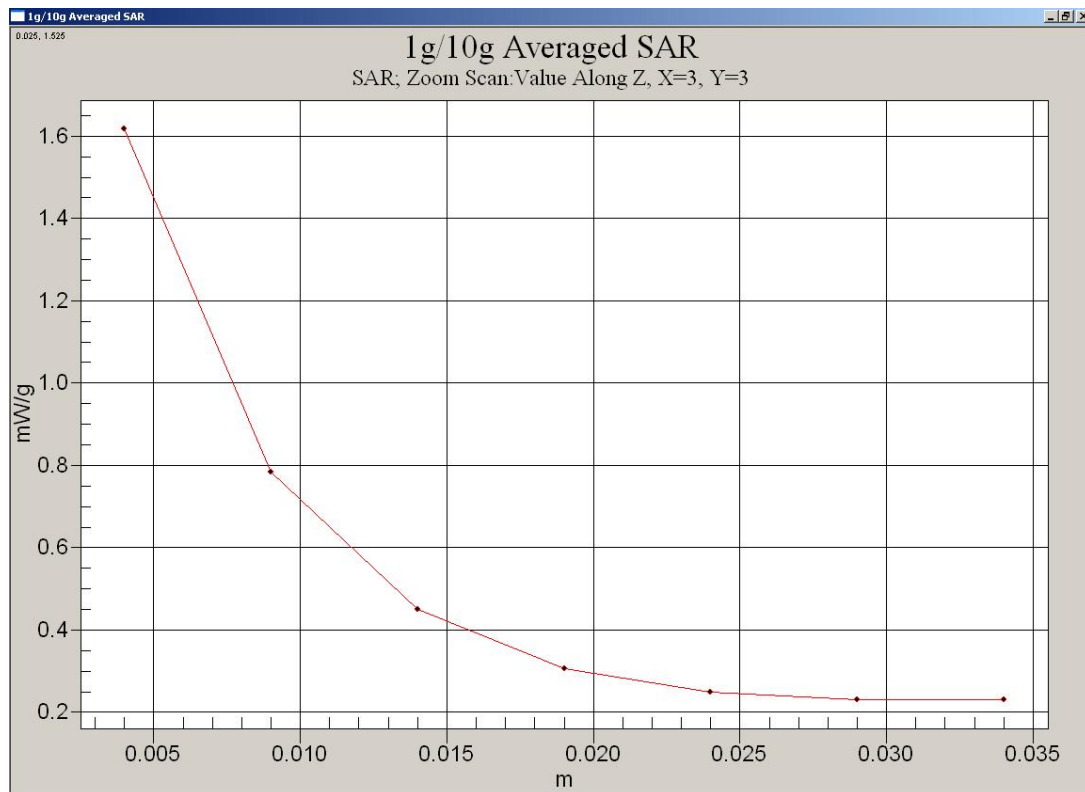
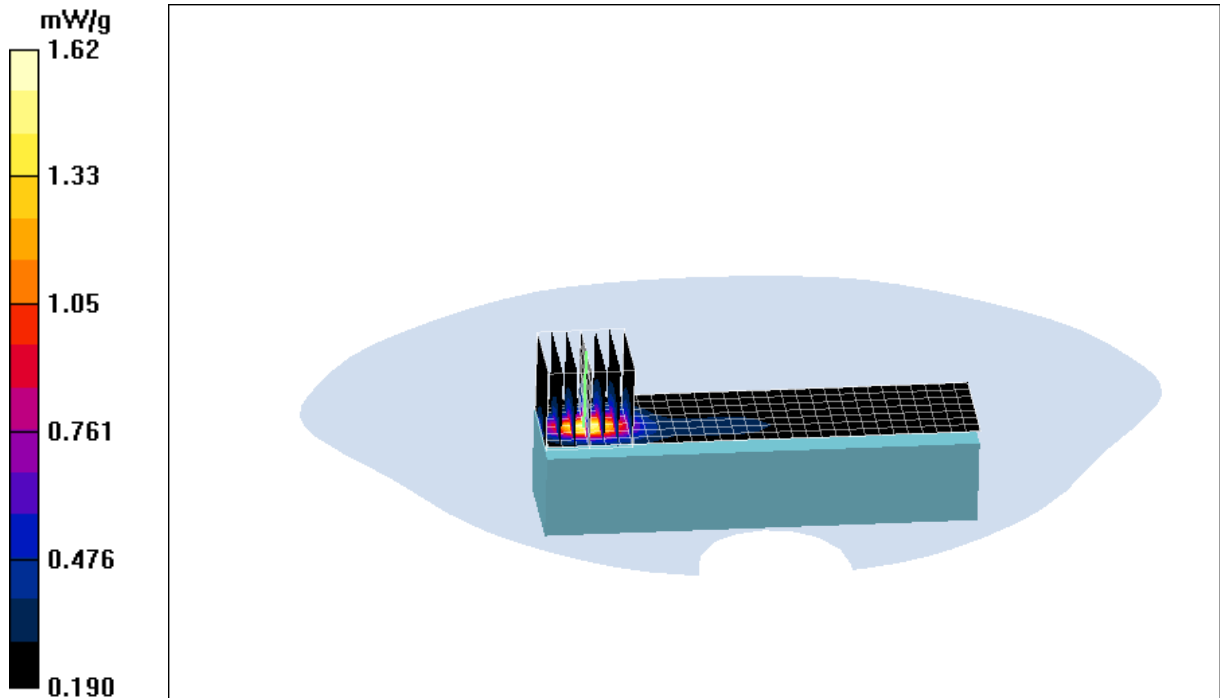
EUT Front_Ch 3_2462MHz_Data 1/Zoom Scan (7x7x7)/Cube 0: Measurement grid: $dx=5\text{mm}$, $dy=5\text{mm}$, $dz=5\text{mm}$

Reference Value = 11.4 V/m ; Power Drift = 0.129 dB

Peak SAR (extrapolated) = 3.68 W/kg

SAR(1 g) = 1.4 mW/g ; SAR(10 g) = 0.630 mW/g

Maximum value of SAR (measured) = 1.62 mW/g





ANTENNA A 11Mbps LAP TEST RESULTS

Ambient Temperature: $24 \pm 1^{\circ}\text{C}$
Tissue Temperature: $24 \pm 1^{\circ}\text{C}$
Humidity: 54% to 59%

Test Laboratory: TUV SUD PSB PTE LTD.

Date/Time: 3/30/2009 4:07:49 PM

File Name: [EUT Lap_Ch 1_2412MHz_11mbps.da4](#)

Program Name: EUT Lap_Ch 1_2412MHz_Data 1.da4

Phantom section: Flat Section

DUT: Notebook

Communication System: 2450 Mhz

Frequency: 2412 MHz

Duty Cycle: 1:1

Medium: Body 2450 MHz Medium parameters used: $f = 2450\text{ MHz}$; $\sigma = 1.97\text{ mho/m}$; $\epsilon_r = 52.1$; $\rho = 1000\text{ kg/m}^3$

DASY4 Configuration:

Electronics: DAE4 Sn627

Calibrated: 6/14/2007

Phantom: SAM 12

Measurement SW: DASY4, V4.7 Build 80

Probe: EX3DV4 - SN3541

ConvF(7.07, 7.07, 7.07)

Calibrated: 7/13/2007

Post processing SW: SEMCAD, V1.8 Build 186

Sensor-Surface: 4mm (Mechanical Surface Detection)

EUT Rear_Ch 1_2412MHz_Data 1/Area Scan (14x17x1): Measurement grid:

$dx=5\text{mm}$, $dy=5\text{mm}$

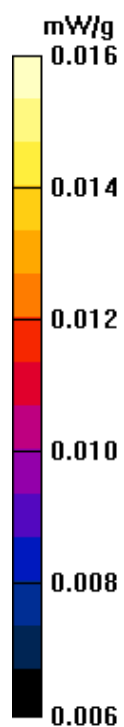
Maximum value of SAR (measured) = 0.016 mW/g

EUT Rear_Ch 1_2412MHz_Data 1/Zoom Scan (7x7x7)/Cube 0: Measurement grid: $dx=5\text{mm}$, $dy=5\text{mm}$, $dz=5\text{mm}$

Reference Value = 2.42 V/m ; Power Drift = -0.982 dB

Peak SAR (extrapolated) = 0.018 W/kg

SAR(1 g) = 0.014 mW/g ; SAR(10 g) = 0.012 mW/g





ANTENNA A 11Mbps LAP TEST RESULTS

Ambient Temperature: $24 \pm 1^{\circ}\text{C}$
Tissue Temperature: $24 \pm 1^{\circ}\text{C}$
Humidity: 54% to 59%

Test Laboratory: TUV SUD PSB PTE LTD.

Date/Time: 3/30/2009 3:12:16 PM

File Name: [EUT Lap_Ch 2_2442MHz_11mbps.da4](#)

Program Name: EUT Lap_Ch 2_2442MHz_Data 1.da4

Phantom section: Flat Section

DUT: Notebook

Communication System: 2450 Mhz

Frequency: 2442 MHz

Duty Cycle: 1:1

Medium: Body 2450 MHz Medium parameters used: $f = 2450\text{ MHz}$; $\sigma = 1.97\text{ mho/m}$; $\epsilon_r = 52.1$; $\rho = 1000\text{ kg/m}^3$

DASY4 Configuration:

Electronics: DAE4 Sn627

Calibrated: 6/14/2007

Phantom: SAM 12

Measurement SW: DASY4, V4.7 Build 80

Probe: EX3DV4 - SN3541

ConvF(7.07, 7.07, 7.07)

Calibrated: 7/13/2007

Post processing SW: SEMCAD, V1.8 Build 186

Sensor-Surface: 4mm (Mechanical Surface Detection)

EUT Rear_Ch 2_2442MHz_Data 1/Area Scan (13x18x1): Measurement grid:

$dx=5\text{mm}$, $dy=5\text{mm}$

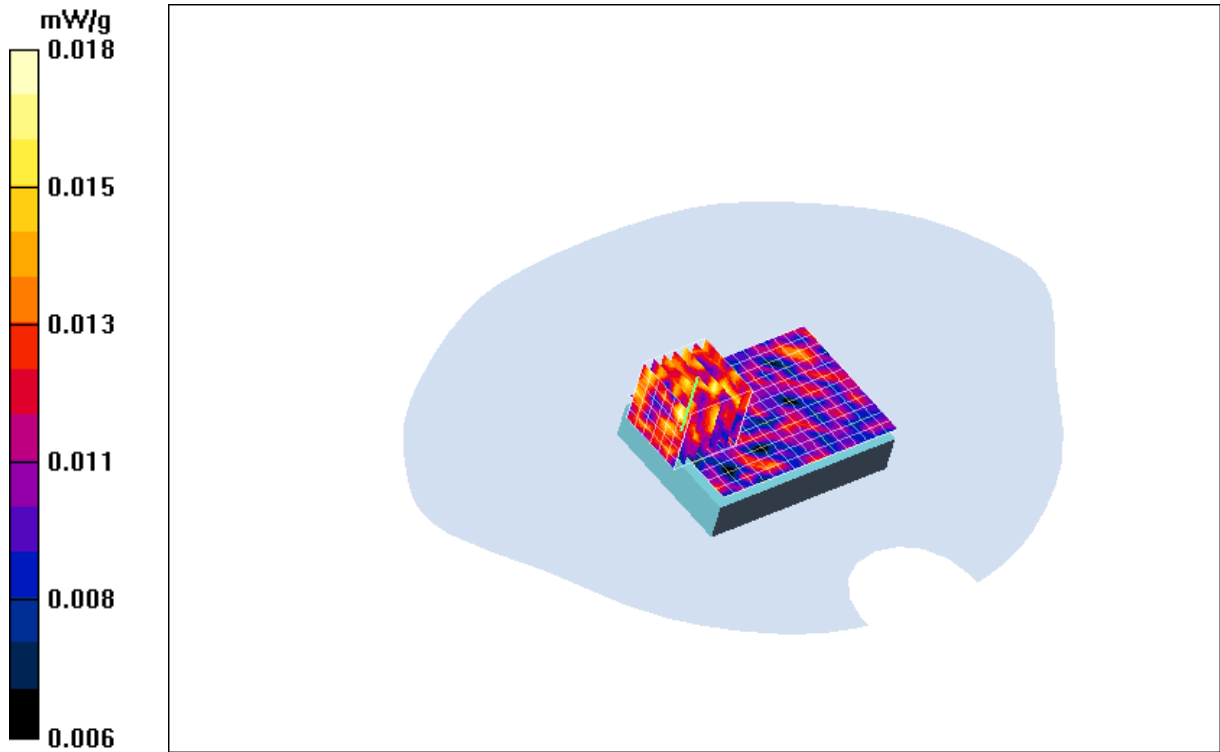
Maximum value of SAR (measured) = 0.015 mW/g

EUT Rear_Ch 2_2442MHz_Data 1/Zoom Scan (7x7x7)/Cube 0: Measurement grid: $dx=5\text{mm}$, $dy=5\text{mm}$, $dz=5\text{mm}$

Reference Value = 2.19 V/m ; Power Drift = 1.12 dB

Peak SAR (extrapolated) = 0.020 W/kg

SAR(1 g) = 0.013 mW/g ; SAR(10 g) = 0.012 mW/g





ANTENNA A 11Mbps LAP TEST RESULTS

Ambient Temperature: $24 \pm 1^{\circ}\text{C}$
Tissue Temperature: $24 \pm 1^{\circ}\text{C}$
Humidity: 54% to 59%

Test Laboratory: TUV SUD PSB PTE LTD.

Date/Time: 3/31/2009 9:22:18 AM

File Name: [EUT Lap_Ch 3_2462MHz_11mbps.da4](#)

Program Name: EUT Lap_Ch 3_2462MHz_Data 1.da4

Phantom section: Flat Section

DUT: Notebook

Communication System: 2450 Mhz

Frequency: 2442 MHz

Duty Cycle: 1:1

Medium: Body 2450 MHz Medium parameters used: $f = 2450\text{ MHz}$; $\sigma = 1.97\text{ mho/m}$; $\epsilon_r = 52.1$; $\rho = 1000\text{ kg/m}^3$

DASY4 Configuration:

Electronics: DAE4 Sn627

Calibrated: 6/14/2007

Phantom: SAM 12

Measurement SW: DASY4, V4.7 Build 80

Probe: EX3DV4 - SN3541

ConvF(7.07, 7.07, 7.07)

Calibrated: 7/13/2007

Post processing SW: SEMCAD, V1.8 Build 186

Sensor-Surface: 4mm (Mechanical Surface Detection)

EUT Rear_Ch 3_2462MHz_Data 1/Area Scan (13x18x1): Measurement grid:

$dx=5\text{mm}$, $dy=5\text{mm}$

Maximum value of SAR (measured) = 0.016 mW/g

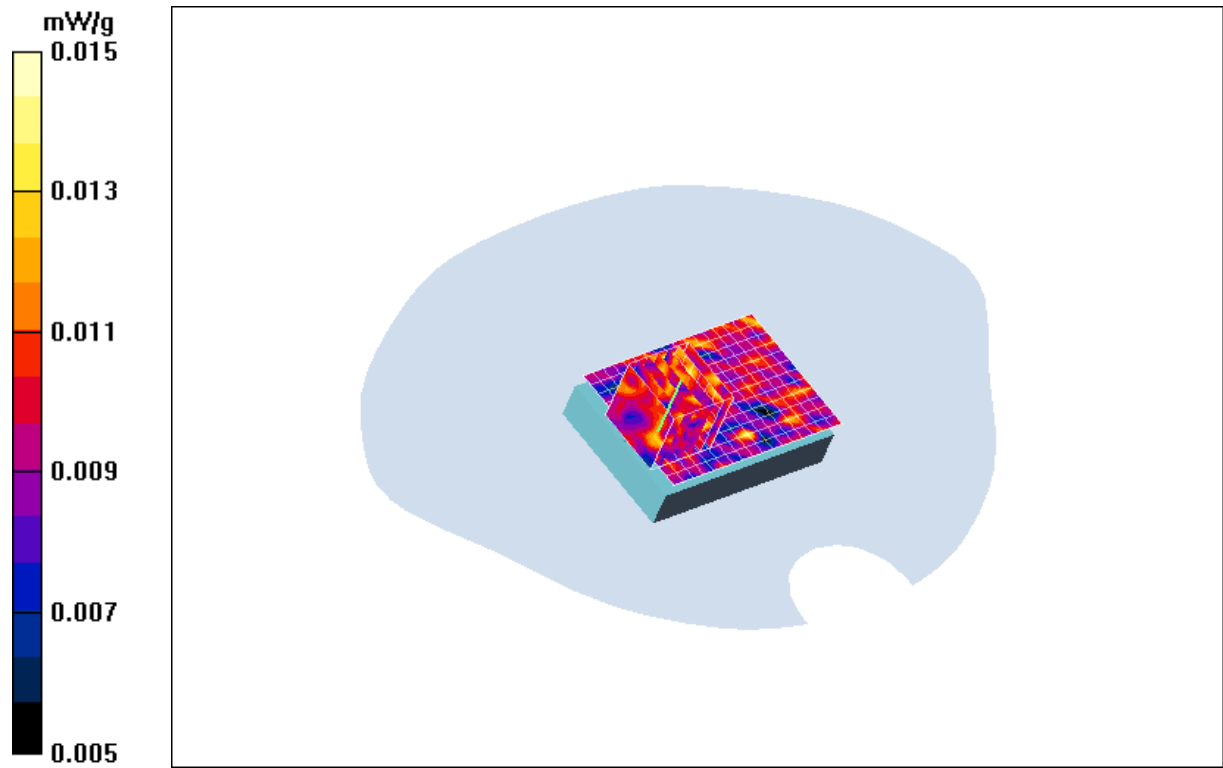
EUT Rear_Ch 3_2462MHz_Data 1/Zoom Scan (7x7x7)/Cube 0: Measurement grid: $dx=5\text{mm}$, $dy=5\text{mm}$, $dz=5\text{mm}$

Reference Value = 2.19 V/m ; Power Drift = -0.440 dB

Peak SAR (extrapolated) = 0.017 W/kg

SAR(1 g) = 0.011 mW/g ; SAR(10 g) = 0.0097 mW/g

Maximum value of SAR (measured) = 0.015 mW/g





ANTENNA A 11Mbps Closed TEST RESULTS

Ambient Temperature: $24 \pm 1^{\circ}\text{C}$
Tissue Temperature: $24 \pm 1^{\circ}\text{C}$
Humidity: 54% to 59%

Test Laboratory: TUV SUD PSB PTE LTD.

Date/Time: 3/27/2009 1:43:58 PM

File Name: [EUT front closed_Ch 1_2412MHz_11mbps.da4](#)

Program Name: EUT closed _Ch 1_2412MHz_Data 1.da4

Phantom section: Flat Section

DUT: Notebook

Communication System: 2450 Mhz

Frequency: 2412 MHz

Duty Cycle: 1:1

Medium: Body 2450 MHz Medium parameters used: $f = 2450\text{ MHz}$; $\sigma = 1.97\text{ mho/m}$; $\epsilon_r = 52.1$; $\rho = 1000\text{ kg/m}^3$

DASY4 Configuration:

Electronics: DAE4 Sn627

Calibrated: 6/14/2007

Phantom: SAM 12

Measurement SW: DASY4, V4.7 Build 80

Probe: EX3DV4 - SN3541

ConvF(7.07, 7.07, 7.07)

Calibrated: 7/13/2007

Post processing SW: SEMCAD, V1.8 Build 186

Sensor-Surface: 4mm (Mechanical Surface Detection)

EUT closed_Ch 1_2412MHz_Data 1/Area Scan (11x41x1): Measurement grid:
 $dx=5\text{mm}$, $dy=5\text{mm}$

Maximum value of SAR (measured) = 0.187 mW/g

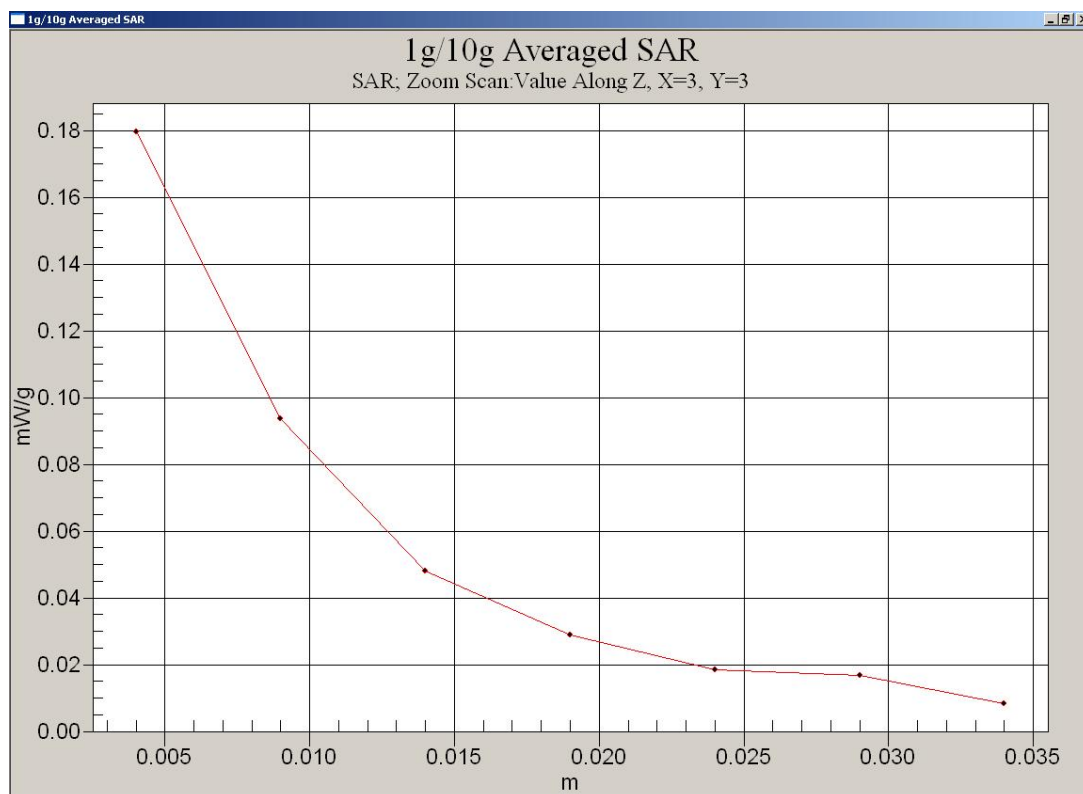
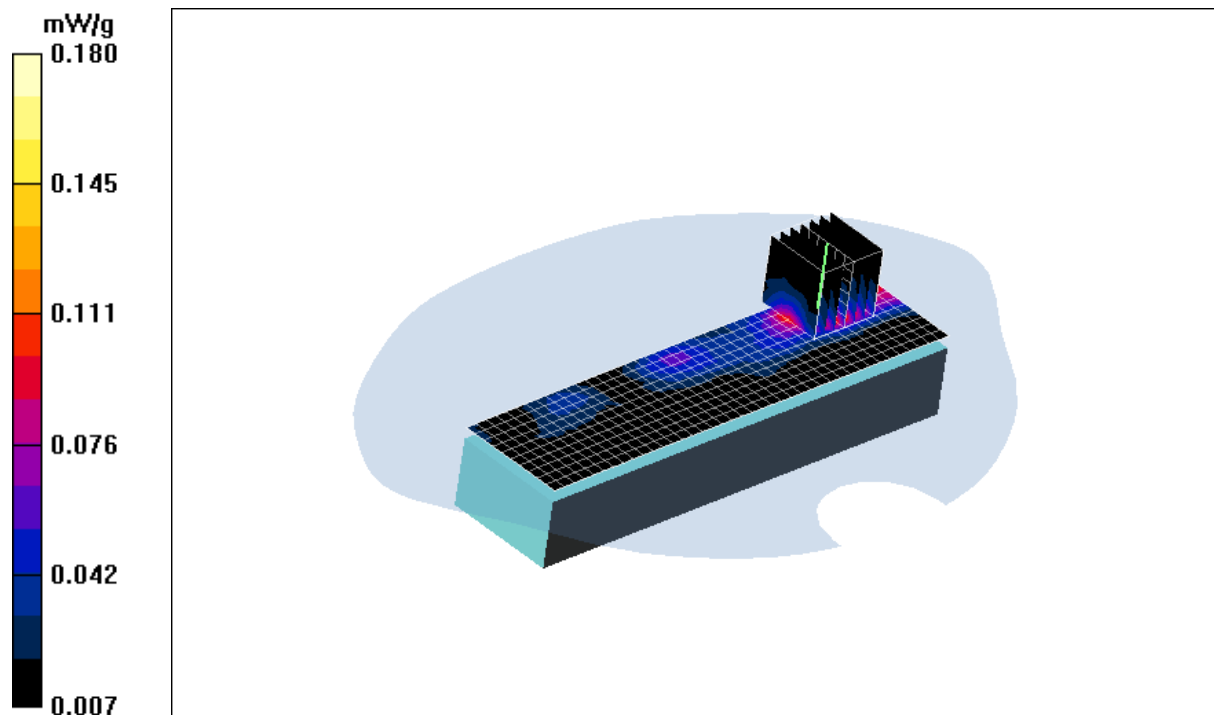
EUT closed_Ch 1_2412MHz_Data 1/Zoom Scan (7x7x7)/Cube 0: Measurement
grid: $dx=5\text{mm}$, $dy=5\text{mm}$, $dz=5\text{mm}$

Reference Value = 3.06 V/m; Power Drift = 0.502 dB

Peak SAR (extrapolated) = 0.305 W/kg

SAR(1 g) = 0.159 mW/g; SAR(10 g) = 0.081 mW/g

Maximum value of SAR (measured) = 0.180 mW/g





ANTENNA A 11Mbps Closed TEST RESULTS

Ambient Temperature: $24 \pm 1^{\circ}\text{C}$
Tissue Temperature: $24 \pm 1^{\circ}\text{C}$
Humidity: 54% to 59%

Test Laboratory: TUV SUD PSB PTE LTD.

Date/Time: 3/27/2009 2:43:42 PM

File Name: [EUT front closed_Ch 2_2442MHz_11mbps.da4](#)

Program Name: EUT closed _Ch 2_2442MHz_Data 1.da4

Phantom section: Flat Section

DUT: Notebook

Communication System: 2450 Mhz

Frequency: 2442 MHz

Duty Cycle: 1:1

Medium: Body 2450 MHz Medium parameters used: $f = 2450\text{ MHz}$; $\sigma = 1.97\text{ mho/m}$; $\epsilon_r = 52.1$; $\rho = 1000\text{ kg/m}^3$

DASY4 Configuration:

Electronics: DAE4 Sn627

Calibrated: 6/14/2007

Phantom: SAM 12

Measurement SW: DASY4, V4.7 Build 80

Probe: EX3DV4 - SN3541

ConvF(7.07, 7.07, 7.07)

Calibrated: 7/13/2007

Post processing SW: SEMCAD, V1.8 Build 186

Sensor-Surface: 4mm (Mechanical Surface Detection)

EUT closed_Ch 2_2442MHz_Data 1/Area Scan (11x41x1): Measurement grid:
 $dx=5\text{mm}$, $dy=5\text{mm}$

Maximum value of SAR (measured) = 0.158 mW/g

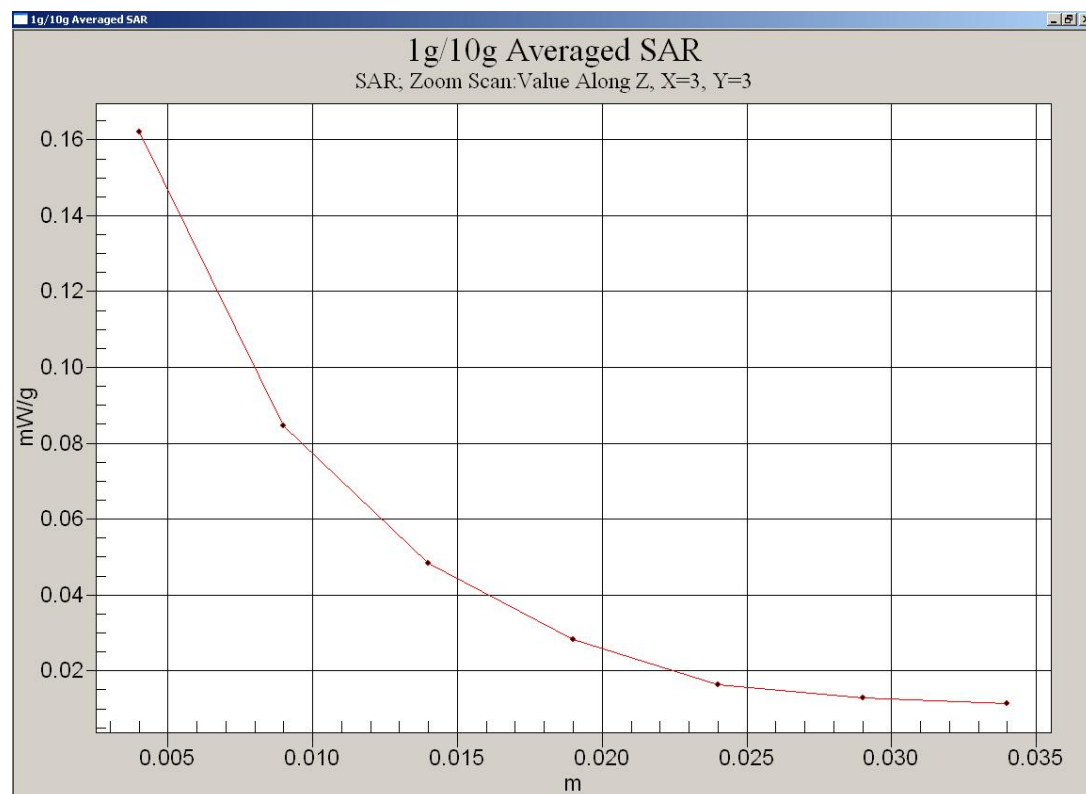
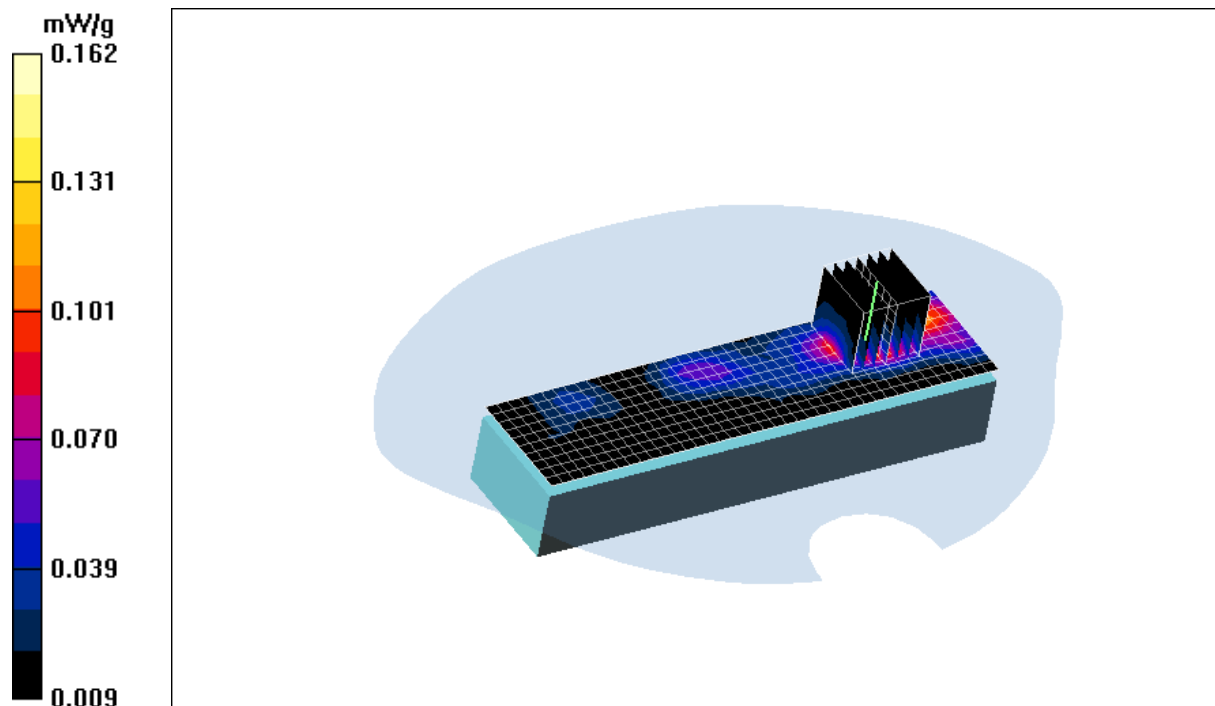
EUT closed_Ch 2_2442MHz_Data 1/Zoom Scan (7x7x7)/Cube 0: Measurement
grid: $dx=5\text{mm}$, $dy=5\text{mm}$, $dz=5\text{mm}$

Reference Value = 3.96 V/m; Power Drift = 0.091 dB

Peak SAR (extrapolated) = 0.303 W/kg

SAR(1 g) = 0.145 mW/g; SAR(10 g) = 0.072 mW/g

Maximum value of SAR (measured) = 0.162 mW/g





ANTENNA A 11Mbps Closed TEST RESULTS

Ambient Temperature: $24 \pm 1^{\circ}\text{C}$
Tissue Temperature: $24 \pm 1^{\circ}\text{C}$
Humidity: 54% to 59%

Test Laboratory: TUV SUD PSB PTE LTD.

Date/Time: 3/27/2009 3:41:01 PM

File Name: [EUT front closed_Ch 3_2462MHz_11mbps.da4](#)

Program Name: EUT Closed_Ch 3_2462MHz_Data 1.da4

Phantom section: Flat Section

DUT: Notebook

Communication System: 2450 Mhz

Frequency: 2462 MHz

Duty Cycle: 1:1

Medium: Body 2450 MHz Medium parameters used: $f = 2450\text{ MHz}$; $\sigma = 1.97\text{ mho/m}$; $\epsilon_r = 52.1$; $\rho = 1000\text{ kg/m}^3$

DASY4 Configuration:

Electronics: DAE4 Sn627

Calibrated: 6/14/2007

Phantom: SAM 12

Measurement SW: DASY4, V4.7 Build 80

Probe: EX3DV4 - SN3541

ConvF(7.07, 7.07, 7.07)

Calibrated: 7/13/2007

Post processing SW: SEMCAD, V1.8 Build 186

Sensor-Surface: 4mm (Mechanical Surface Detection)

EUT Front_Ch 3_2462MHz_Data 1/Area Scan (11x41x1): Measurement grid:

$dx=5\text{mm}$, $dy=5\text{mm}$

Maximum value of SAR (measured) = 0.212 mW/g

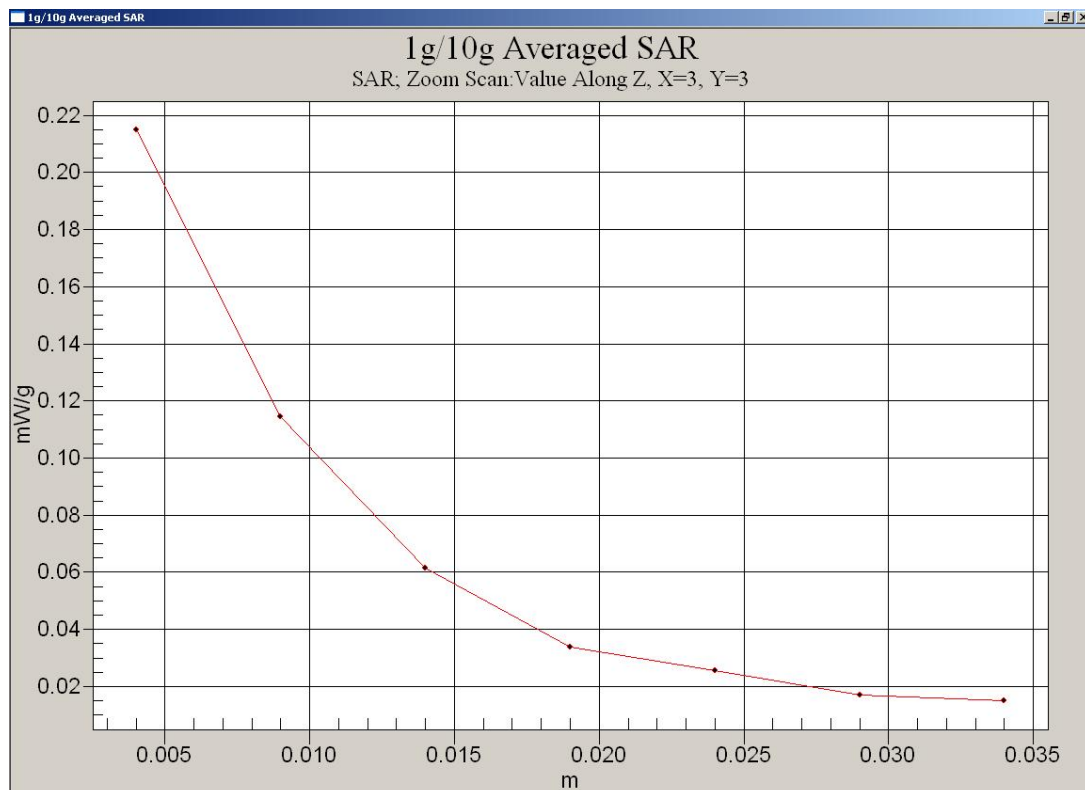
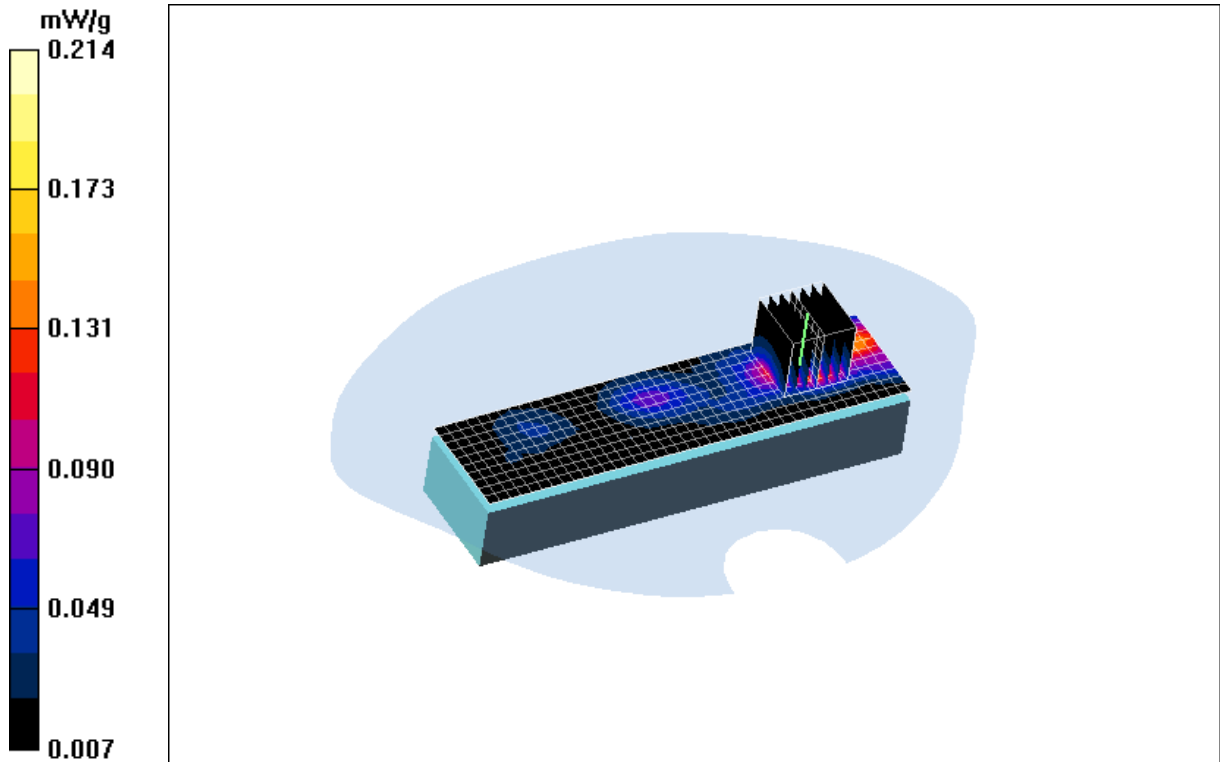
EUT Front_Ch 3_2462MHz_Data 1/Zoom Scan (7x7x7)/Cube 0: Measurement grid: $dx=5\text{mm}$, $dy=5\text{mm}$, $dz=5\text{mm}$

Reference Value = 4.99 V/m; Power Drift = 0.265 dB

Peak SAR (extrapolated) = 0.374 W/kg

SAR(1 g) = 0.186 mW/g; SAR(10 g) = 0.090 mW/g

Maximum value of SAR (measured) = 0.214 mW/g





ANTENNA B 11Mbps LAP TEST RESULTS

Ambient Temperature: $24 \pm 1^{\circ}\text{C}$
Tissue Temperature: $24 \pm 1^{\circ}\text{C}$
Humidity: 54% to 59%

Test Laboratory: TUV SUD PSB PTE LTD.

Date/Time: 3/30/2009 11:10:50 AM

File Name: [EUT Lap_Ch 1_2412MHz_11mbps.da4](#)

Program Name: EUT Lap_Ch 1_2412MHz_Data 1.da4

Phantom section: Flat Section

DUT: Notebook

Communication System: 2450 Mhz

Frequency: 2412 MHz

Duty Cycle: 1:1

Medium: Body 2450 MHz Medium parameters used: $f = 2450\text{ MHz}$; $\sigma = 1.97\text{ mho/m}$; $\epsilon_r = 52.1$; $\rho = 1000\text{ kg/m}^3$

DASY4 Configuration:

Electronics: DAE4 Sn627

Calibrated: 6/14/2007

Phantom: SAM 12

Measurement SW: DASY4, V4.7 Build 80

Probe: EX3DV4 - SN3541

ConvF(7.07, 7.07, 7.07)

Calibrated: 7/13/2007

Post processing SW: SEMCAD, V1.8 Build 186

Sensor-Surface: 4mm (Mechanical Surface Detection)

EUT Rear_Ch 1_2412MHz_Data 1/Area Scan (14x17x1): Measurement grid:

$dx=5\text{mm}$, $dy=5\text{mm}$

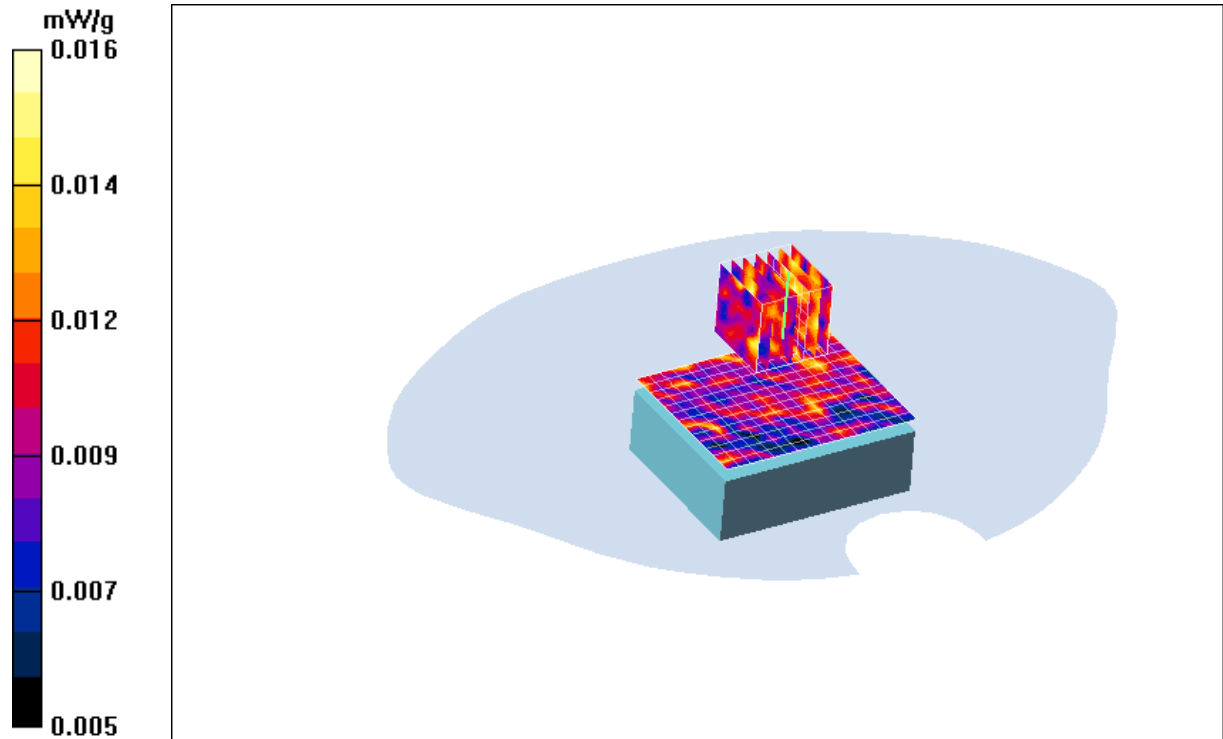
Maximum value of SAR (measured) = 0.016 mW/g

EUT Rear_Ch 1_2412MHz_Data 1/Zoom Scan (7x7x7)/Cube 0: Measurement grid: $dx=5\text{mm}$, $dy=5\text{mm}$, $dz=5\text{mm}$

Reference Value = 2.47 V/m; Power Drift = -0.384 dB

Peak SAR (extrapolated) = 0.020 W/kg

SAR(1 g) = 0.012 mW/g; SAR(10 g) = 0.011 mW/g





ANTENNA B 11Mbps LAP TEST RESULTS

Ambient Temperature: $24 \pm 1^{\circ}\text{C}$
Tissue Temperature: $24 \pm 1^{\circ}\text{C}$
Humidity: 54% to 59%

Test Laboratory: TUV SUD PSB PTE LTD.

Date/Time: 3/30/2009 11:52:23 AM

File Name: [EUT Lap_Ch 2_2442MHz_11mbps.da4](#)

Program Name: EUT Lap_Ch 2_2442MHz_Data 1.da4

Phantom section: Flat Section

DUT: Notebook

Communication System: 2450 Mhz

Frequency: 2442 MHz

Duty Cycle: 1:1

Medium: Body 2450 MHz Medium parameters used: $f = 2450\text{ MHz}$; $\sigma = 1.97\text{ mho/m}$; $\epsilon_r = 52.1$; $\rho = 1000\text{ kg/m}^3$

DASY4 Configuration:

Electronics: DAE4 Sn627

Calibrated: 6/14/2007

Phantom: SAM 12

Measurement SW: DASY4, V4.7 Build 80

Probe: EX3DV4 - SN3541

ConvF(7.07, 7.07, 7.07)

Calibrated: 7/13/2007

Post processing SW: SEMCAD, V1.8 Build 186

Sensor-Surface: 4mm (Mechanical Surface Detection)

EUT Rear_Ch 2_2442MHz_Data 1/Area Scan (13x18x1): Measurement grid:

$dx=5\text{mm}$, $dy=5\text{mm}$

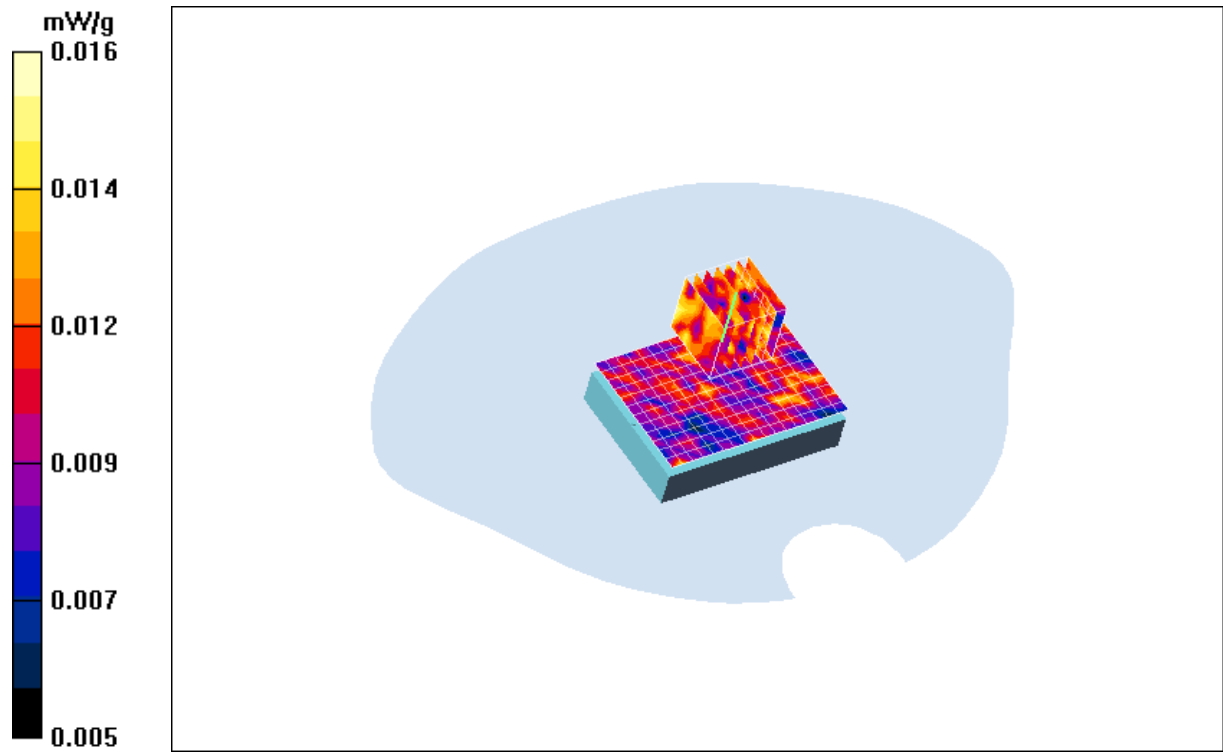
Maximum value of SAR (measured) = 0.015 mW/g

EUT Rear_Ch 2_2442MHz_Data 1/Zoom Scan (7x7x7)/Cube 0: Measurement grid: $dx=5\text{mm}$, $dy=5\text{mm}$, $dz=5\text{mm}$

Reference Value = 2.26 V/m; Power Drift = 0.160 dB

Peak SAR (extrapolated) = 0.035 W/kg

SAR(1 g) = 0.013 mW/g; SAR(10 g) = 0.011 mW/g





ANTENNA B 11Mbps LAP TEST RESULTS

Ambient Temperature: $24 \pm 1^{\circ}\text{C}$
Tissue Temperature: $24 \pm 1^{\circ}\text{C}$
Humidity: 54% to 59%

Test Laboratory: TUV SUD PSB PTE LTD.

Date/Time: 3/30/2009 1:18:39 PM

File Name: [EUT Lap_Ch 3_2462MHz_11mbps.da4](#)

Program Name: EUT Lap_Ch 3_2462MHz_Data 1.da4

Phantom section: Flat Section

DUT: Notebook

Communication System: 2450 Mhz

Frequency: 2442 MHz

Duty Cycle: 1:1

Medium: Body 2450 MHz Medium parameters used: $f = 2450\text{ MHz}$; $\sigma = 1.97\text{ mho/m}$; $\epsilon_r = 52.1$; $\rho = 1000\text{ kg/m}^3$

DASY4 Configuration:

Electronics: DAE4 Sn627

Calibrated: 6/14/2007

Phantom: SAM 12

Measurement SW: DASY4, V4.7 Build 80

Probe: EX3DV4 - SN3541

ConvF(7.07, 7.07, 7.07)

Calibrated: 7/13/2007

Post processing SW: SEMCAD, V1.8 Build 186

Sensor-Surface: 4mm (Mechanical Surface Detection)

EUT Rear_Ch 3_2462MHz_Data 1/Area Scan (13x18x1): Measurement grid:

$dx=5\text{mm}$, $dy=5\text{mm}$

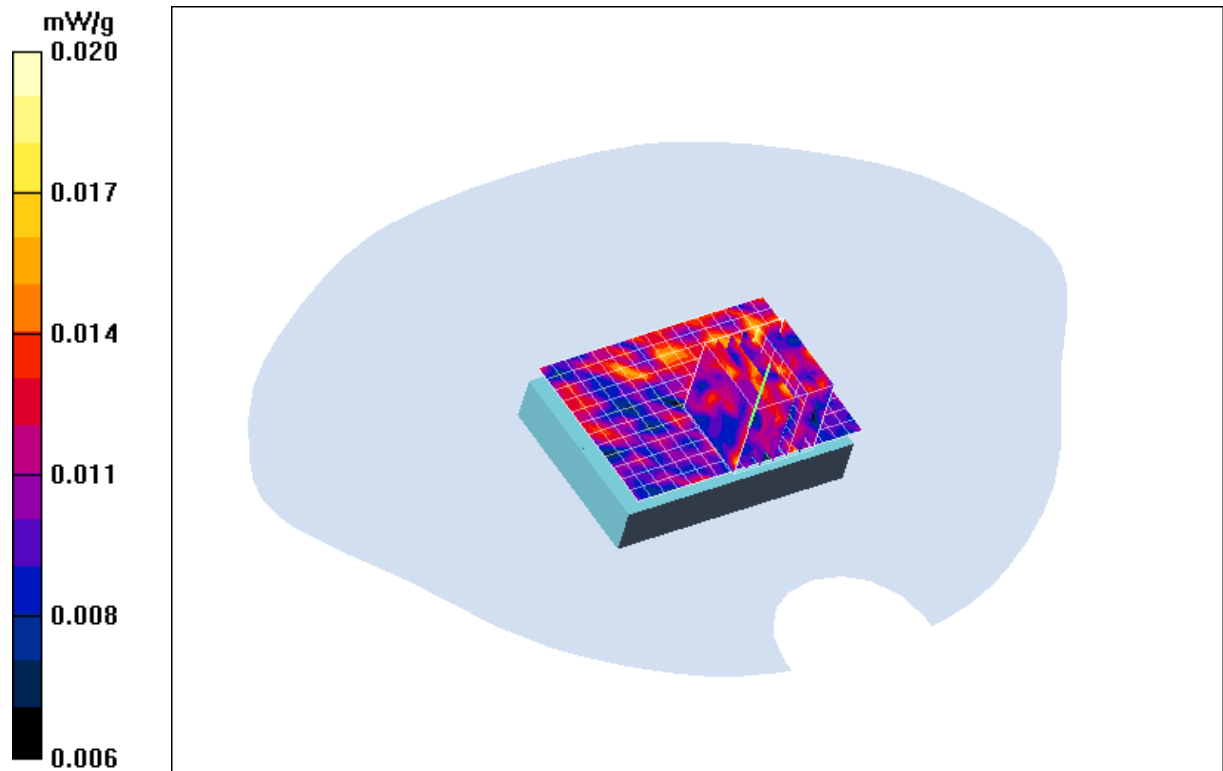
Maximum value of SAR (measured) = 0.016 mW/g

EUT Rear_Ch 3_2462MHz_Data 1/Zoom Scan (7x7x7)/Cube 0: Measurement grid: $dx=5\text{mm}$, $dy=5\text{mm}$, $dz=5\text{mm}$

Reference Value = 1.98 V/m ; Power Drift = 0.726 dB

Peak SAR (extrapolated) = 0.020 W/kg

SAR(1 g) = 0.012 mW/g ; SAR(10 g) = 0.011 mW/g





ANTENNA B 11Mbps Closed TEST RESULTS

Ambient Temperature: $24 \pm 1^{\circ}\text{C}$
Tissue Temperature: $24 \pm 1^{\circ}\text{C}$
Humidity: 54% to 59%

Test Laboratory: TUV SUD PSB PTE LTD.

Date/Time: 3/30/2009 9:06:06 AM

File Name: [EUT front Closed_Ch 1_2412MHz_11mbps.da4](#)

Program Name: EUT Closed_Ch 1_2412MHz_Data 1.da4

Phantom section: Flat Section

DUT: Notebook

Communication System: 2450 Mhz

Frequency: 2412 MHz

Duty Cycle: 1:1

Medium: Body 2450 MHz Medium parameters used: $f = 2450\text{ MHz}$; $\sigma = 1.97\text{ mho/m}$; $\epsilon_r = 52.1$; $\rho = 1000\text{ kg/m}^3$

DASY4 Configuration:

Electronics: DAE4 Sn627

Calibrated: 6/14/2007

Phantom: SAM 12

Measurement SW: DASY4, V4.7 Build 80

Probe: EX3DV4 - SN3541

ConvF(7.07, 7.07, 7.07)

Calibrated: 7/13/2007

Post processing SW: SEMCAD, V1.8 Build 186

Sensor-Surface: 4mm (Mechanical Surface Detection)

EUT closed_Ch 1_2412MHz_Data 1/Area Scan (8x31x1): Measurement grid:

$dx=5\text{mm}$, $dy=5\text{mm}$

Maximum value of SAR (measured) = 1.32 mW/g

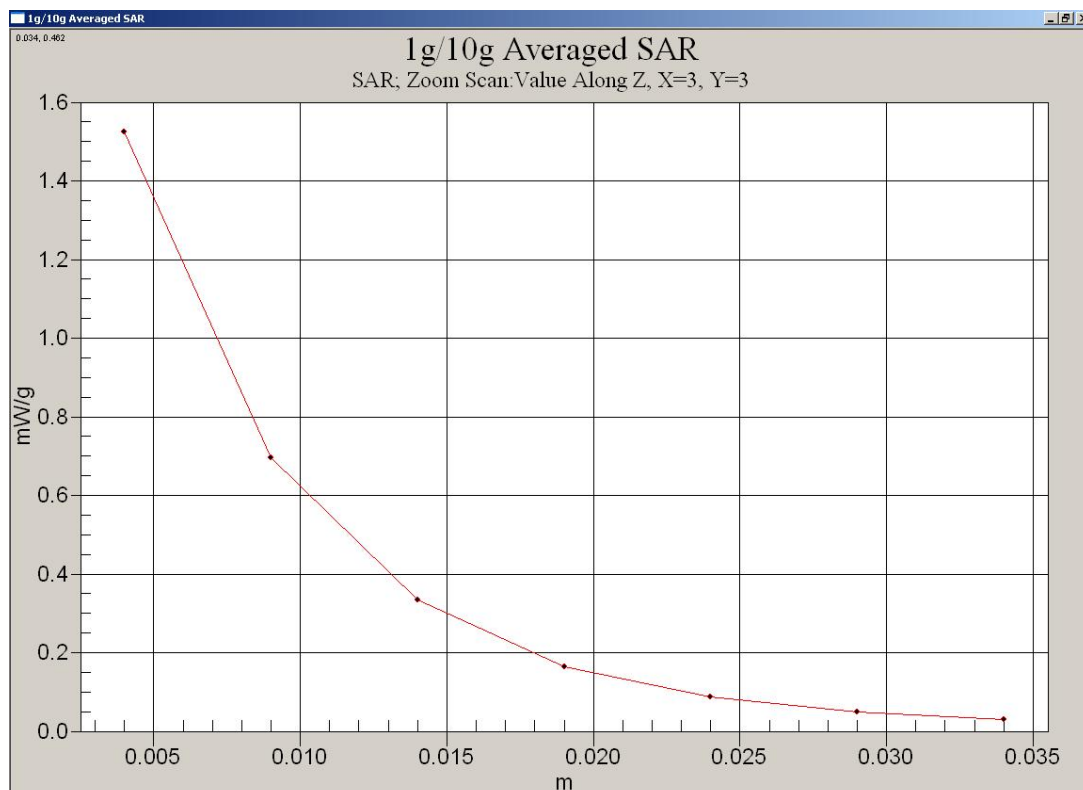
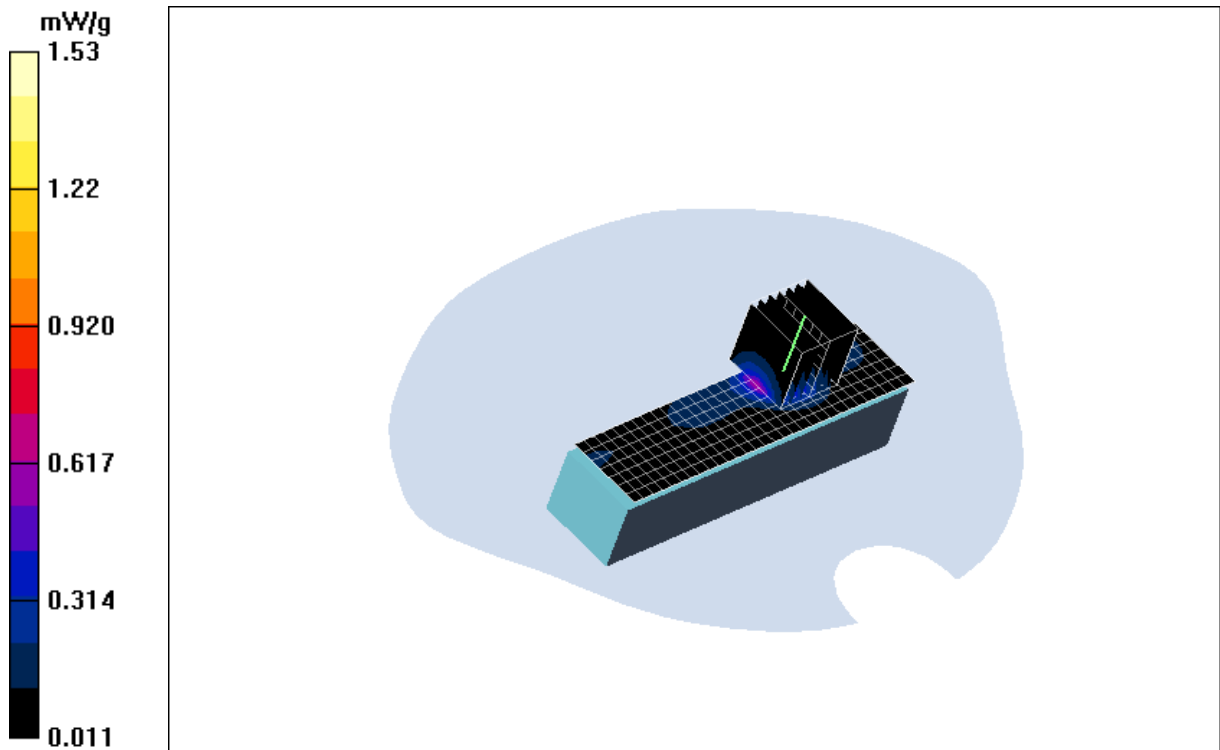
EUT closed_Ch 1_2412MHz_Data 1/Zoom Scan (7x7x7)/Cube 0: Measurement grid: $dx=5\text{mm}$, $dy=5\text{mm}$, $dz=5\text{mm}$

Reference Value = 7.10 V/m ; Power Drift = 0.450 dB

Peak SAR (extrapolated) = 3.07 W/kg

SAR(1 g) = 1.24 mW/g ; SAR(10 g) = 0.489 mW/g

Maximum value of SAR (measured) = 1.53 mW/g





ANTENNA B 11Mbps LAP TEST RESULTS

Ambient Temperature: $24 \pm 1^{\circ}\text{C}$
Tissue Temperature: $24 \pm 1^{\circ}\text{C}$
Humidity: 54% to 59%

Test Laboratory: TUV SUD PSB PTE LTD.

Date/Time: 3/30/2009 9:44:53 AM

File Name: [EUT front Closed_Ch 2_2442MHz_11mbps.da4](#)

Program Name: EUT Closed_Ch 2_2442MHz_Data 1.da4

Phantom section: Flat Section

DUT: Notebook

Communication System: 2450 Mhz

Frequency: 2442 MHz

Duty Cycle: 1:1

Medium: Body 2450 MHz Medium parameters used: $f = 2450\text{ MHz}$; $\sigma = 1.97\text{ mho/m}$; $\epsilon_r = 52.1$; $\rho = 1000\text{ kg/m}^3$

DASY4 Configuration:

Electronics: DAE4 Sn627

Calibrated: 6/14/2007

Phantom: SAM 12

Measurement SW: DASY4, V4.7 Build 80

Probe: EX3DV4 - SN3541

ConvF(7.07, 7.07, 7.07)

Calibrated: 7/13/2007

Post processing SW: SEMCAD, V1.8 Build 186

Sensor-Surface: 4mm (Mechanical Surface Detection)

EUT closed_Ch 2_2442MHz_Data 1/Area Scan (8x31x1): Measurement grid:

$dx=5\text{mm}$, $dy=5\text{mm}$

Maximum value of SAR (measured) = 1.72 mW/g

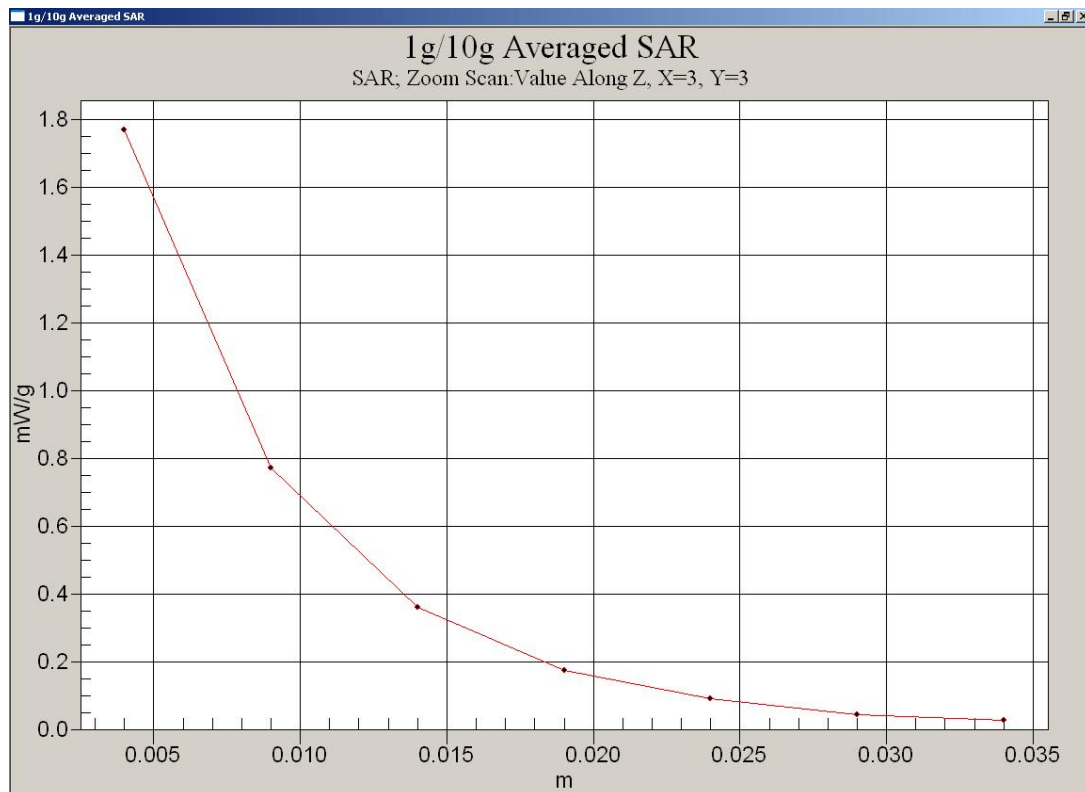
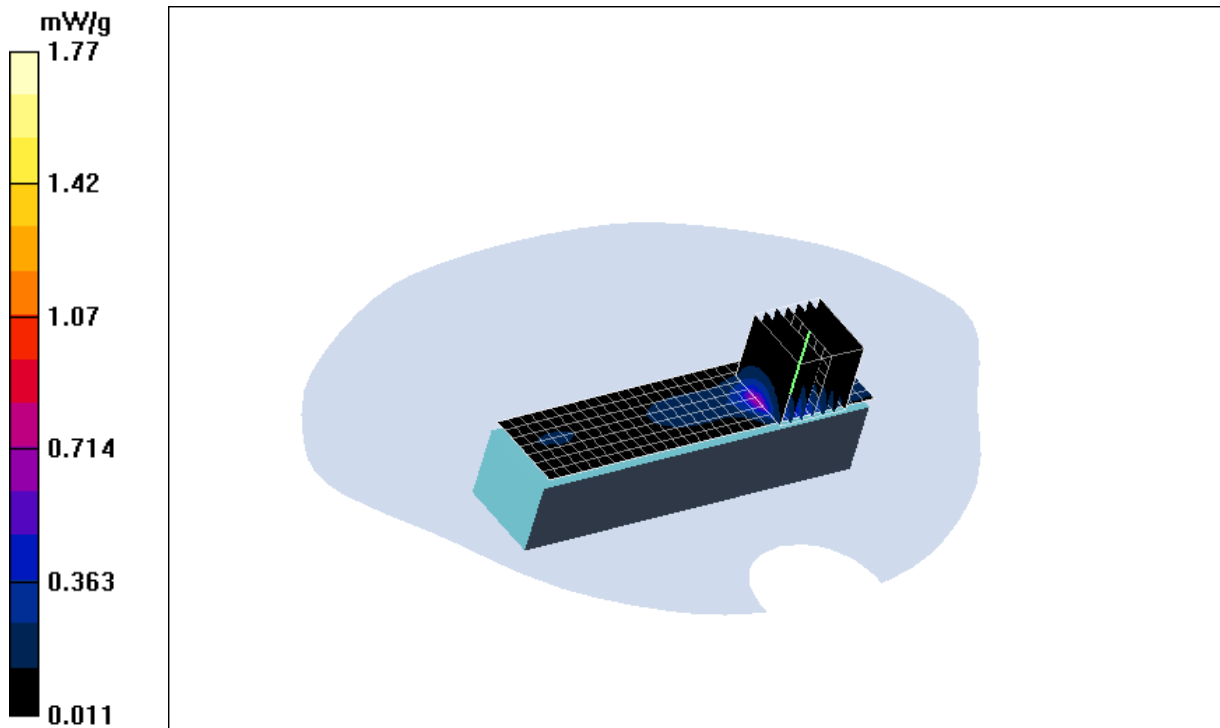
EUT closed_Ch 2_2442MHz_Data 1/Zoom Scan (7x7x7)/Cube 0: Measurement grid: $dx=5\text{mm}$, $dy=5\text{mm}$, $dz=5\text{mm}$

Reference Value = 10.4 V/m ; Power Drift = -0.026 dB

Peak SAR (extrapolated) = 3.66 W/kg

SAR(1 g) = 1.43 mW/g ; SAR(10 g) = 0.545 mW/g

Maximum value of SAR (measured) = 1.77 mW/g





ANTENNA B 11Mbps LAP TEST RESULTS

Ambient Temperature: $24 \pm 1^{\circ}\text{C}$
Tissue Temperature: $24 \pm 1^{\circ}\text{C}$
Humidity: 54% to 59%

Test Laboratory: TUV SUD PSB PTE LTD.

Date/Time: 3/30/2009 10:24:25 AM

File Name: [EUT Closed_Ch 3_2462MHz_11mbps.da4](#)

Program Name: EUT Closed_Ch 3_2462MHz_Data 1.da4

Phantom section: Flat Section

DUT: Notebook

Communication System: 2450 Mhz

Frequency: 2462 MHz

Duty Cycle: 1:1

Medium: Body 2450 MHz Medium parameters used: $f = 2450\text{ MHz}$; $\sigma = 1.97\text{ mho/m}$; $\epsilon_r = 52.1$; $\rho = 1000\text{ kg/m}^3$

DASY4 Configuration:

Electronics: DAE4 Sn627

Calibrated: 6/14/2007

Phantom: SAM 12

Measurement SW: DASY4, V4.7 Build 80

Probe: EX3DV4 - SN3541

ConvF(7.07, 7.07, 7.07)

Calibrated: 7/13/2007

Post processing SW: SEMCAD, V1.8 Build 186

Sensor-Surface: 4mm (Mechanical Surface Detection)

EUT Front_Ch 3_2462MHz_Data 1/Area Scan (8x31x1): Measurement grid:

$dx=5\text{mm}$, $dy=5\text{mm}$

Maximum value of SAR (measured) = 1.72 mW/g

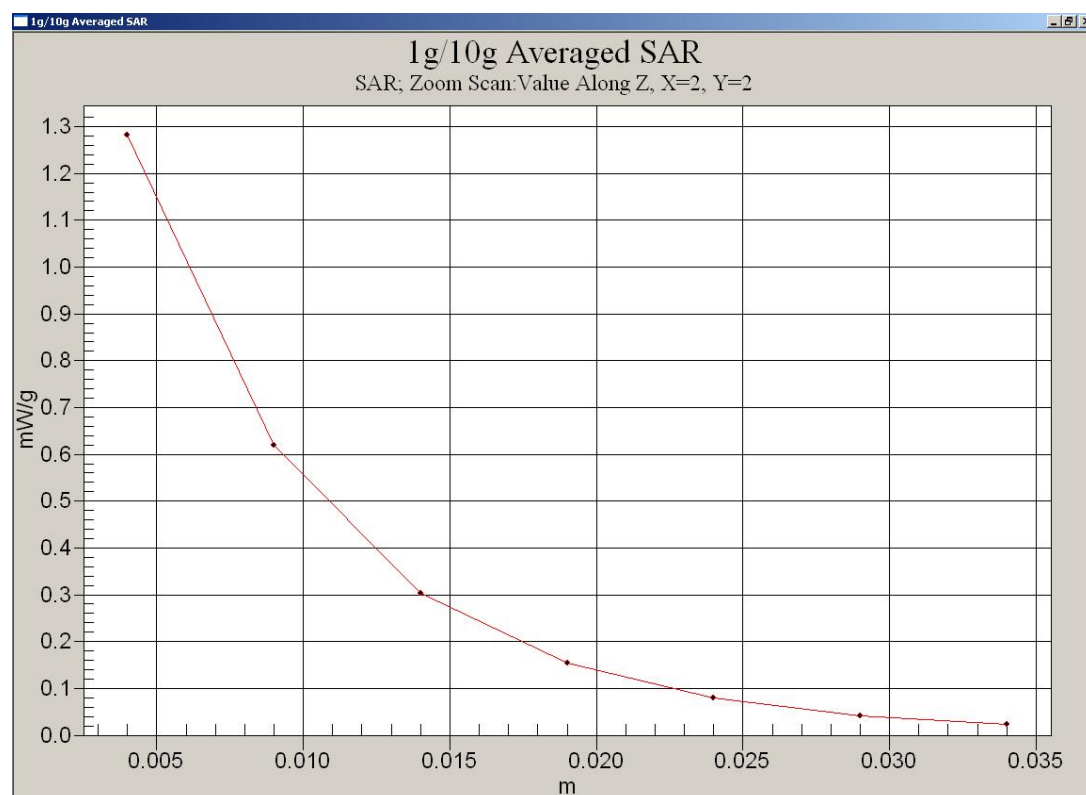
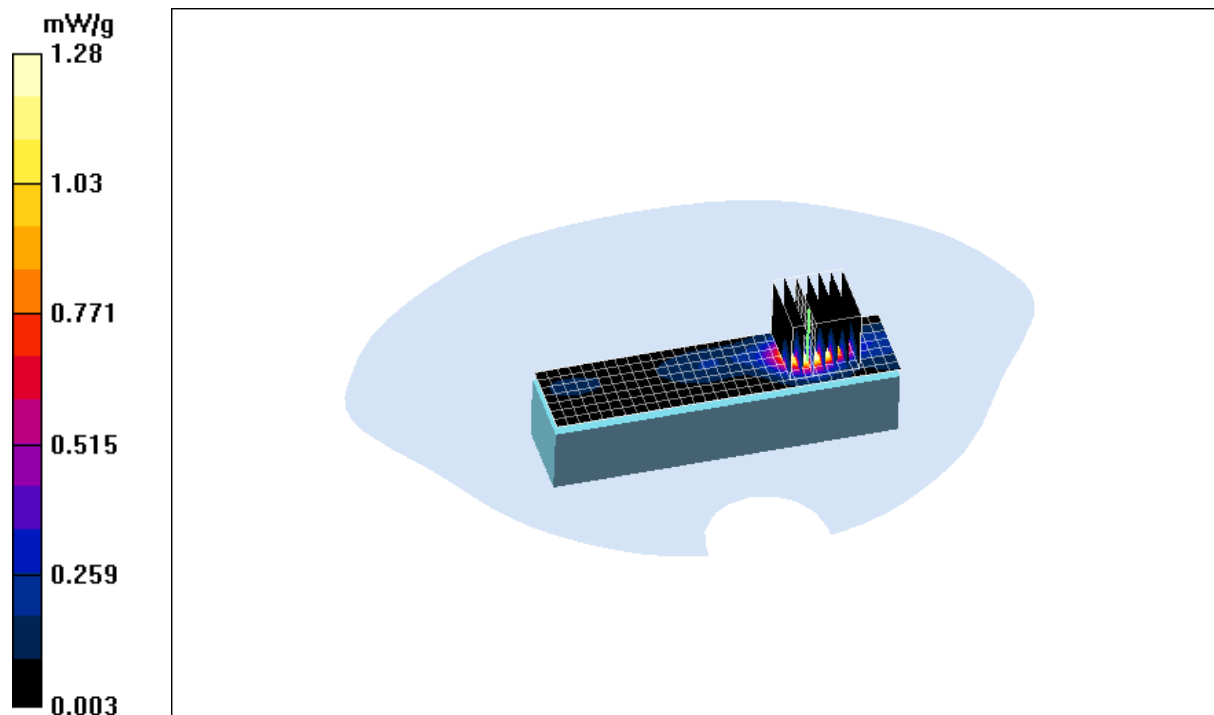
EUT Front_Ch 3_2462MHz_Data 1/Zoom Scan (7x7x7)/Cube 0: Measurement grid: $dx=5\text{mm}$, $dy=5\text{mm}$, $dz=5\text{mm}$

Reference Value = 9.38 V/m ; Power Drift = -13.4 dB

Peak SAR (extrapolated) = 2.65 W/kg

SAR(1 g) = 0.764 mW/g ; SAR(10 g) = 0.212 mW/g

Maximum value of SAR (measured) = 1.28 mW/g





Conducted Peak Output Power Measurement (Antenna A):

| Data Rate | Frequency MHz | Conducted Peak Output power dBm |
|-------------|------------------|------------------------------------|
| DQPSK 1Mbps | CH1 2412MHz | 16.60 |
| | CH2 2442MHz | 17.00 |
| | CH3 2462MHz | 17.01 |

| Data Rate | Frequency MHz | Conducted Peak Output power dBm |
|-------------|------------------|------------------------------------|
| DQPSK 2Mbps | CH1 2412MHz | 16.90 |
| | CH2 2442MHz | 16.70 |
| | CH3 2462MHz | 16.40 |

| Data Rate | Frequency MHz | Conducted Peak Output power dBm |
|-------------|------------------|------------------------------------|
| CCK 5.5Mbps | CH1 2412MHz | 16.07 |
| | CH2 2442MHz | 16.66 |
| | CH3 2462MHz | 16.33 |

| Data Rate | Frequency MHz | Conducted Peak Output power dBm |
|------------|------------------|------------------------------------|
| CCK 11Mbps | CH1 2412MHz | 16.95 |
| | CH2 2442MHz | 17.10 |
| | CH3 2462MHz | 17.40 |

| Data Rate | Frequency MHz | Conducted Peak Output power dBm |
|-----------------|------------------|------------------------------------|
| (802.11g) 6Mbps | CH1 2412MHz | 17.33 |
| | CH2 2442MHz | 17.93 |
| | CH3 2462MHz | 17.50 |

| Data Rate | Frequency MHz | Conducted Peak Output power dBm |
|-----------------|------------------|------------------------------------|
| (802.11g) 9Mbps | CH1 2412MHz | 17.00 |
| | CH2 2442MHz | 17.40 |
| | CH3 2462MHz | 16.90 |

| Data Rate | Frequency MHz | Conducted Peak Output power dBm |
|------------------|------------------|------------------------------------|
| (802.11g) 12Mbps | CH1 2412MHz | 16.20 |
| | CH2 2442MHz | 16.90 |
| | CH3 2462MHz | 16.50 |

| Data Rate | Frequency MHz | Conducted Peak Output power dBm |
|------------------|------------------|------------------------------------|
| (802.11g) 18Mbps | CH1 2412MHz | 16.11 |
| | CH2 2442MHz | 17.47 |
| | CH3 2462MHz | 16.85 |

| Data Rate | Frequency MHz | Conducted Peak Output power dBm |
|------------------|------------------|------------------------------------|
| (802.11g) 24Mbps | CH1 2412MHz | 16.12 |
| | CH2 2442MHz | 16.63 |
| | CH3 2462MHz | 16.45 |

| Data Rate | Frequency MHz | Conducted Peak Output power dBm |
|------------------|------------------|------------------------------------|
| (802.11g) 36Mbps | CH1 2412MHz | 16.80 |
| | CH2 2442MHz | 16.70 |
| | CH3 2462MHz | 16.10 |

| Data Rate | Frequency MHz | Conducted Peak Output power dBm |
|------------------|------------------|------------------------------------|
| (802.11g) 48Mbps | CH1 2412MHz | 16.50 |
| | CH2 2442MHz | 16.00 |
| | CH3 2462MHz | 16.66 |

| Data Rate | Frequency MHz | Conducted Peak Output power dBm |
|------------------|------------------|------------------------------------|
| (802.11g) 54Mbps | CH1 2412MHz | 16.20 |
| | CH2 2442MHz | 16.09 |
| | CH3 2462MHz | 16.80 |

Conducted Peak Output Power Measurement (Antenna B):

| Data Rate | Frequency MHz | Conducted Peak Output power dBm |
|-------------|------------------|------------------------------------|
| DQPSK 1Mbps | CH1 2412MHz | 16.36 |
| | CH2 2442MHz | 16.32 |
| | CH3 2462MHz | 16.15 |

| Data Rate | Frequency MHz | Conducted Peak Output power dBm |
|-------------|------------------|------------------------------------|
| DQPSK 2Mbps | CH1 2412MHz | 16.33 |
| | CH2 2442MHz | 16.18 |
| | CH3 2462MHz | 16.11 |

| Data Rate | Frequency MHz | Conducted Peak Output power dBm |
|-------------|------------------|------------------------------------|
| CCK 5.5Mbps | CH1 2412MHz | 16.26 |
| | CH2 2442MHz | 16.55 |
| | CH3 2462MHz | 16.07 |

| Data Rate | Frequency MHz | Conducted Peak Output power dBm |
|------------|------------------|------------------------------------|
| CCK 11Mbps | CH1 2412MHz | 16.44 |
| | CH2 2442MHz | 16.61 |
| | CH3 2462MHz | 16.20 |

| Data Rate | Frequency MHz | Conducted Peak Output power dBm |
|-----------------|------------------|------------------------------------|
| (802.11g) 6Mbps | CH1 2412MHz | 16.50 |
| | CH2 2442MHz | 16.77 |
| | CH3 2462MHz | 16.90 |

| Data Rate | Frequency MHz | Conducted Peak Output power dBm |
|-----------------|------------------|------------------------------------|
| (802.11g) 9Mbps | CH1 2412MHz | 16.47 |
| | CH2 2442MHz | 16.71 |
| | CH3 2462MHz | 16.52 |

| Data Rate | Frequency MHz | Conducted Peak Output power dBm |
|------------------|------------------|------------------------------------|
| (802.11g) 12Mbps | CH1 2412MHz | 16.30 |
| | CH2 2442MHz | 16.70 |
| | CH3 2462MHz | 16.62 |

| Data Rate | Frequency MHz | Conducted Peak Output power dBm |
|------------------|------------------|------------------------------------|
| (802.11g) 18Mbps | CH1 2412MHz | 16.41 |
| | CH2 2442MHz | 16.74 |
| | CH3 2462MHz | 16.81 |



| Data Rate | Frequency MHz | Conducted Peak Output power dBm |
|------------------|------------------|------------------------------------|
| (802.11g) 24Mbps | CH1 2412MHz | 16.45 |
| | CH2 2442MHz | 16.40 |
| | CH3 2462MHz | 16.80 |

| Data Rate | Frequency MHz | Conducted Peak Output power dBm |
|------------------|------------------|------------------------------------|
| (802.11g) 36Mbps | CH1 2412MHz | 16.37 |
| | CH2 2442MHz | 16.01 |
| | CH3 2462MHz | 16.36 |

| Data Rate | Frequency MHz | Conducted Peak Output power dBm |
|------------------|------------------|------------------------------------|
| (802.11g) 48Mbps | CH1 2412MHz | 16.16 |
| | CH2 2442MHz | 16.40 |
| | CH3 2462MHz | 16.83 |

| Data Rate | Frequency MHz | Conducted Peak Output power dBm |
|------------------|------------------|------------------------------------|
| (802.11g) 54Mbps | CH1 2412MHz | 16.34 |
| | CH2 2442MHz | 16.72 |
| | CH3 2462MHz | 16.73 |



This Report is issued under the following conditions:

1. Results of the testing/calibration in the form of a report will be issued immediately after the service has been completed or terminated.
2. Unless otherwise requested, a report shall contain only technical results. Analysis and interpretation of the results and professional opinion and recommendations expressed thereupon, if required, shall be clearly indicated and additional fee paid for, by the Client.
3. This report applies to the sample of the specific product/equipment given at the time of its testing/calibration. The results are not used to indicate or imply that they are applicable to other similar items. In addition, such results must not be used to indicate or imply that TÜV SÜD PSB approves, recommends or endorses the manufacturer, supplier or user of such product/equipment, or that TÜV SÜD PSB in any way "guarantees" the later performance of the product/equipment.
4. The sample/s mentioned in this report is/are submitted/supplied/manufactured by the Client. TÜV SÜD PSB therefore assumes no responsibility for the accuracy of information on the brand name, model number, origin of manufacture, consignment or any information supplied.
5. Additional copies of the report are available to the Client at an additional fee. No third party can obtain a copy of this report through TÜV SÜD PSB, unless the Client has authorised TÜV SÜD PSB in writing to do so.
6. TÜV SÜD PSB may at its sole discretion add to or amend the conditions of the report at the time of issue of the report and such report and such additions or amendments shall be binding on the Client.
7. All copyright in the report shall remain with TÜV SÜD PSB and the Client shall, upon payment of TÜV SÜD PSB's fees for the carrying out of the tests/calibrations, be granted a license to use or publish the report to the third parties subject to the terms and conditions herein, provided always that TÜV SÜD PSB may at its absolute discretion be entitled to impose such conditions on the license as it sees fit.
8. Nothing in this report shall be interpreted to mean that TÜV SÜD PSB has verified or ascertained any endorsement or marks from any other testing authority or bodies that may be found on that sample.
9. This report shall not be reproduced wholly or in parts and no reference shall be made by the Client to TÜV SÜD PSB or to the report or results furnished by TÜV SÜD PSB in any advertisements or sales promotion.
10. Unless otherwise stated, the tests are carried out in TÜV SÜD PSB Pte Ltd, No.1 Science Park Drive Singapore 118221.

January 2008



ANNEX A

**TEST INSTRUMENTATION
&
GENERAL PROCEDURE**



TEST INSTRUMENTATION & GENERAL PROCEDURES

ANNEX A

A.1 General Test Procedure

In the SAR measurement, the positioning of the probes must be performed with sufficient accuracy to obtain repeatable measurements in the presence of rapid spatial attenuation phenomena. The accurate positioning of the E-field probe is accomplished by using a high precision robot. The robot can be taught to position the probe sensor following a specific pattern of points. In a first sweep, the sensor is positioned as close as possible to the interface, with the sensor enclosure touching the inside of the fiberglass shell. The SAR is measured on a grid of points, which covers the curved surface of the phantom in an area larger than the size of the EUT. After the initial scan, a high- resolution grid is used to locate the absolute maximum measured energy point. At this location, attenuation versus depth scan will be accomplished by the measurement system to calculate the SAR value.

A.2 SAR Test Instrumentation

SAR Measurement System

- **Positioning Equipment**

Type: High Precision Industrial Robot, RX90.
Precision: High precision (repeatability 0.02mm)
Reliability: High reliability (industrial design)

- **Compaq Computer**

Type: 2.4GHz Pentium
Memory: 512MB SDRAM
Operating System: Windows 2000
Dell Monitor: 17" LCD

- **Dosimetric E-Field Probe**

Type: ET3DV6
Isotropy Error (\varnothing): $\pm 0.25\text{dB}$
Dynamic Range: 0.01 – 100 W/kg

- **Phantom & Tissue**

Phantom: "Phantom SAM 12" and "450MHz Phantom" were manufactured by SPEAG.
Tissue: Simulated Tissue with electrical characteristics similar to those of the human at normal body temperature ($23 \pm 1^\circ\text{C}$)
Shell: Fiberglass shell phantom with 2mm thickness for "Phantom SAM 12".
Fiberglass shell phantom with 2mm or 6mm thickness for "450MHz Flat Phantom".

TEST INSTRUMENTATION & GENERAL PROCEDURES

ANNEX A

A.3 Test Setup

Phantom



The “Phantom SAM 12”, manufactured by SPEAG is a fiberglass shell phantom with 2 mm shell thickness. It has three measurement areas:

- Left hand
- Right hand
- Flat phantom

The “Phantom SAM 12” table comes in the sizes: A 100x50x85 cm (LxWxH). The bottom plate contains three pair of bolts for locking the device holder. The device holder positions are adjusted to the standard measurement positions in the three sections. Only one device holder is necessary if two phantoms are used (e.g., for different solutions).

Simulated tissue

Simulated Tissue: Suggested in a paper by George Hartsgrrove and colleagues in University of Ottawa Ref.: **Bioelectromagnetics 8:29-36 (1987)**

This simulated tissue is mainly composed of water, sugar and salt. At higher frequencies, in order to achieve the proper conductivity, the solution does not contain salt. Also, at these frequencies, D.I. water and alcohol is preferred.

Tissue Density : Approximately 1.25 g/cm^3

• Preparation

The ingredients (i.e. water, sugar, salt, etc) required to prepare the simulated tissue are carefully weighed and poured into a clean container for mixing. A stirring paddle, that is attached to a hand drill is used to stir the solution for a duration of about 30 minutes or more. When the ingredients are completely dissolved, the solution is left in the container for the air bubbles to disappear.

Measurement of Electrical Characteristics of Simulated Tissue

- 1) S-PARAMETER Network Analyzer, Agilent 8753ES (30kHz – 6GHz)
- 2) Agilent 85070D Dielectric Probe Kit

TEST INSTRUMENTATION & GENERAL PROCEDURES

ANNEX A

**ELECTRICAL CHARACTERISTIC
MEASUREMENT SETUP**



- **Description of the Agilent 85070D Dielectric Probe Kit**

The 85070D is a dielectric probe that is used to measure the intrinsic electrical properties of materials in the RF and microwave frequency bands. The 85070D software allows you to measure the complex dielectric constant (also called permittivity) of liquids and semi-solids, including the dielectric loss factor of loss tangent.

To obtain data at hundreds of frequencies in seconds, simply immerse the probe into liquids or semi-solids - no special fixtures or containers are required. The 85070D must be used in conjunction with an Agilent network analyzer. The network analyzer provides the high frequency stimulus, and measures the reflected response.

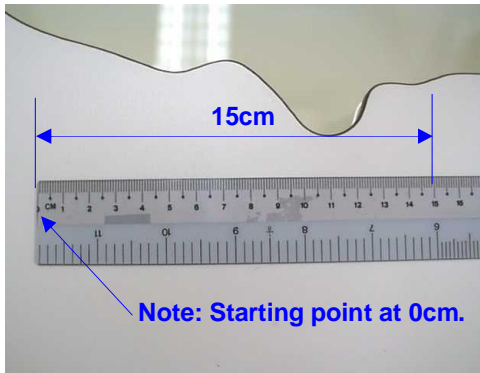
The probe transmits a signal into the material under test (MUT). The measured reflected response from the materials is then related to its dielectric properties. A computer controls the system, and runs software that guides the user through a measurement sequence. An effort is made to keep the results dielectric constant and conductivity within 5 % of published data.

Tissue Depth

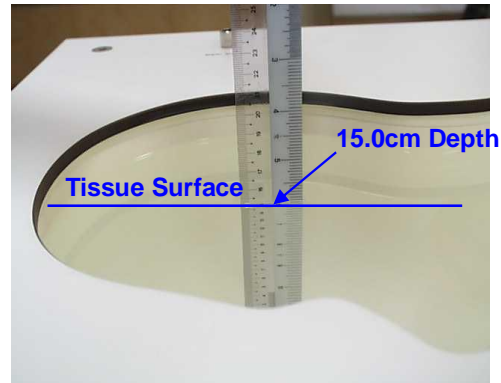
The tissue depth at the "Phantom SAM 12", "450MHz Flat Phantom – 6mm Shell Thickness" & "450MHz Flat Phantom – 2mm Shell Thickness" is approximately 15cm \pm 0.5cm.

TEST INSTRUMENTATION & GENERAL PROCEDURES

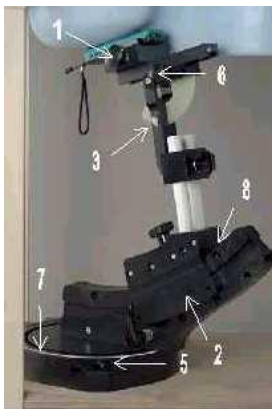
ANNEX A



At "Phantom SAM 12"



Tissue – 15.0cm Depth



The DASY4 holder is designed to cope with different positions given in the standard. It has two scales for the device rotation (with respect to the body axis) and the device inclination (with respect to the line between the ear openings). The plane between the ear openings and the mouth tip has a rotation angle of 65° . The intended use position in the CENELEC document is has a rotation angle of 65° and an inclination angle of 80° . The rotation centers for both scales is the ear opening. Thus the device needs no repositioning when changing the angles. The device rotation around the device axis is not changed in the holder. In the CENELEC standard it is always 0° . If the standard changes, a support will be provided with the new angle.

1. **"Cheek/Touch Position"** – the device is brought toward the mouth of the head phantom by pivoting against the "ear reference point" or along the "N-F" line for the SCC-34/SC-2 head phantom. This test position is established:
 - i) When any point on the display, keypad or mouthpiece portions of the handset is in contact with the phantom.
 - ii) (Or) When any portion of a foldout, sliding or similar keypad cover opened to its intended self-adjusting normal use position is in contact with the cheek or mouth of the phantom.

For existing head phantoms – when the handset loses contact with the phantom at the pivoting point, rotation should continue until the device touches the cheek of the phantom or breaks its last contact from the ear spacer.

2. **"Ear/Tilt Position"** – With the handset aligned in the "Cheek/Touch Position":



TEST INSTRUMENTATION & GENERAL PROCEDURES

ANNEX A

- i) If the earpiece of the handset is not in full contact with the phantom's ear spacer (in the "Cheek/Touch position") and the peak SAR location for the "Cheek/Touch" position is located at the ear spacer region or corresponds to the earpiece region of the handset, the device should be returned to the "initial ear position" by rotating it away from the mouth until the earpiece is in full contact with the ear spacer.
- ii) (Otherwise) The handset should be moved (translated) away from the cheek perpendicular to the line passes through both "ear reference points" (note: one of these ear reference points may not physically exist on a split head model) for approximate 2-3 cm. While it is in this position, the handset is tilted away from the mouth with respect to the "test device reference point" by 15°. After the tilt, it is then moved (translated) back toward the head perpendicular to the line passes through both "ear reference points" until the device touches the phantom or the ear spacer. If the antenna touches the head first, the positioning process should be repeated with a tilt angle less than 15° so that the device and its antenna would touch the phantom simultaneously. This test position may require a device holder or positioner to achieve the translation and tilting with acceptable positioning repeatability.

3. Body Worn Configuration

All body worn accessories are tested for the FCC RF exposure compliance. The phone is positioned into carrying case (if available) and placed below of the flat phantom. Headset or ear piece (if available) is connected during measurements.

4. System Checking

The manufacturer calibrates the probe annually. Dielectric parameters of the tissue stimulants were measured every day using the dielectric probe kit and network analyser 8753ES. Refer to annex C. A system check measurement was made following the determination of the dielectric parameters of the stimulant using the dipole validation system. A power level of 250mW was supplied to the dipole antenna which was placed under the flat section of the twin SAM phantom. The system checking results (dielectric parameters and SAR values) are in Annex D.

TEST INSTRUMENTATION & GENERAL PROCEDURES

ANNEX A

| <u>Instrument</u> | <u>Model</u> | <u>S/No</u> | <u>Cal Due Date</u> | |
|---|--------------|-------------|---------------------|---|
| Boonton RF Power Meter (Dual Channel) | 4532 | 97701 | 1 April 2009 | √ |
| Boonton Power Sensor | 51075 | 51075 | 1 April 2009 | √ |
| Boonton Power Sensor | 51075 | 32002 | 1 April 2009 | √ |
| S-Parameter Network Analyzer (30kHz – 6GHz) | 8753ES | MY40001026 | 31 Mar 2009 | √ |
| Agilent 85070D Dielectric Probe Kit | 85075D | 21356 | - | √ |
| Anritsu RF Signal Generator (10MHz – 20GHz) | 68347C | 04306 | - | √ |
| Amplifier Research Power Amplifier (1MHz – 1000MHz) | 25W1000B | 27225 | - | |
| Amplifier Research Power Amplifier (800MHz – 4.2GHz) | 25S1G4A | 29346 | - | √ |
| Agilent Dual Directional Coupler (0.1~2.0)GHz | HP778D | 18289 | - | √ |
| AR Directional Coupler (0.8~4.2)GHz | DC7144 | 29245 | - | |
| 2450MHz System Validation Dipole | D2450V2 | 752 | 23 Jun 2009 | √ |
| Data Acquisition Electronics (DAE4) | DAE4 | 627 | 24 Jun 2009 | √ |
| Dosimetric E-field Probe | EX3DV4 | 3541 | 23 July 2009 | √ |



TEST SETUP PHOTOGRAPHS

ANNEX B

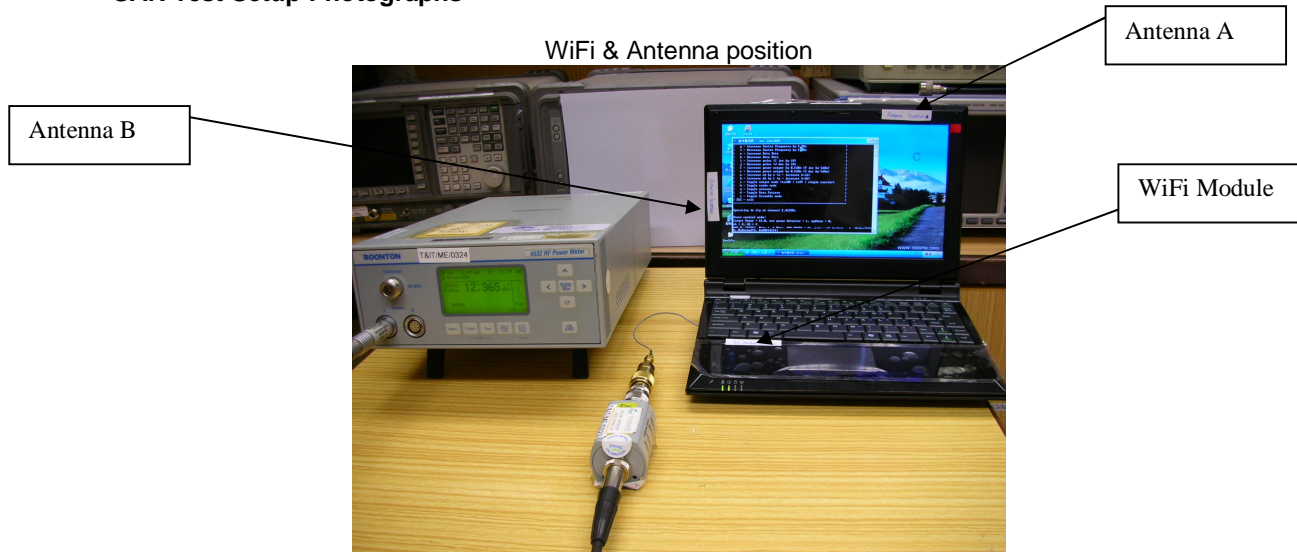
ANNEX B

TEST SETUP PHOTOGRAPHS

TEST SETUP PHOTOGRAPHS

ANNEX B

SAR Test Setup Photographs



Below: SAR Test Lap Position Setup At Flat Phantom



TEST SETUP PHOTOGRAPHS

ANNEX B

Below: SAR Test Close Position Setup At Flat Phantom (Antenna B)



TEST SETUP PHOTOGRAPHS

ANNEX B

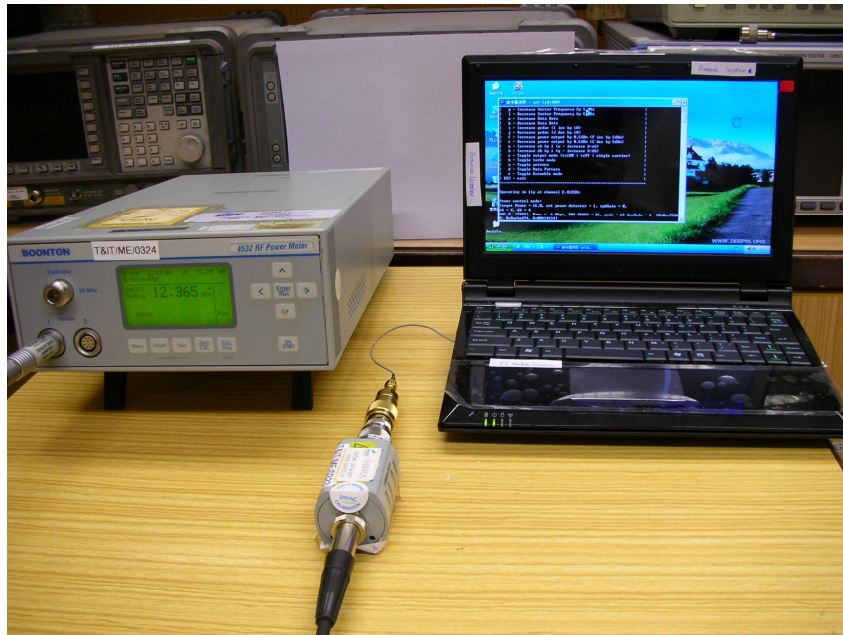
Below: SAR Test Close Position Setup At Flat Phantom (Antenna A)



TEST SETUP PHOTOGRAPHS

ANNEX B

Conducted power Test Setup Photographs



Conducted Power Measurement Test Setup - Closer View

TEST SETUP PHOTOGRAPHS

ANNEX B

EUT PHOTOGRAPHS



Front of EUT



Rear of EUT

TEST SETUP PHOTOGRAPHS

ANNEX B

EUT PHOTOGRAPHS



EUT with Accessories



ANNEX C

ANNEX C

TISSUE SIMULANT DATA SHEETS



Tissue Simulant

ANNEX C

| | |
|-------------------------------------|--|
| Date : | 23-Mar-2009 |
| Type of Tissue | Body |
| Target Frequency (MHz) | 2450 |
| Target Dielectric Constant | 52.7 |
| Target Conductivity (S/m) | 1.9 |
| Composition (by weight) | Water 25500 (72.67%) Glycol 9550 (27.22%) Sugar (0%) Salt 40.0 (0.11%) HEC (0%) Preventol D7 (0%) |
| Measured Dielectric Constant | 52.11 |
| Measured Conductivity (S/m) | 1.9750 |

| | |
|--|------------------------------------|
| Probe Name | Dosimetric E-field Probe EX3DV4 |
| Probe Serial Number | 3541 |
| Sensor Offset (mm) | 1.0 |
| Conversion Factor | 7.54 ± 11.8 % |
| Probe Calibration Due Date (DD/MM/YY) | 23/06/09 |

Tissue Simulant

ANNEX C

| | |
|-------------------------------------|--|
| Date : | 30-Mar-2009 |
| Type of Tissue | Body |
| Target Frequency (MHz) | 2450 |
| Target Dielectric Constant | 52.7 |
| Target Conductivity (S/m) | 1.9 |
| Composition (by weight) | Water 25500 (72.55%) Glycol 9610 (27.34%) Sugar (0%) Salt 38.4 (0.11%) HEC (0%) Preventol D7 (0%) |
| Measured Dielectric Constant | 54.61 |
| Measured Conductivity (S/m) | 1.9998 |

| | |
|--|------------------------------------|
| Probe Name | Dosimetric E-field Probe EX3DV4 |
| Probe Serial Number | 3541 |
| Sensor Offset (mm) | 1.0 |
| Conversion Factor | 7.54 ± 11.8 % |
| Probe Calibration Due Date (DD/MM/YY) | 23/06/09 |



Tissue Simulant

ANNEX C

Body Tissue at 2450MHz

| Frequency | e' | e'' | Conductivity |
|-------------------|--------------|--------------|---------------|
| 2440000000 | 52.22 | 14.51 | 1.9674 |
| 2441000000 | 52.22 | 14.51 | 1.9679 |
| 2442000000 | 52.20 | 14.51 | 1.9683 |
| 2443000000 | 52.19 | 14.51 | 1.9689 |
| 2444000000 | 52.20 | 14.50 | 1.9684 |
| 2445000000 | 52.18 | 14.49 | 1.9677 |
| 2446000000 | 52.18 | 14.50 | 1.9710 |
| 2447000000 | 52.16 | 14.50 | 1.9717 |
| 2448000000 | 52.16 | 14.48 | 1.9695 |
| 2449000000 | 52.13 | 14.51 | 1.9737 |
| 2450000000 | 52.11 | 14.51 | 1.9750 |
| 2451000000 | 52.12 | 14.51 | 1.9753 |
| 2452000000 | 52.09 | 14.52 | 1.9781 |
| 2453000000 | 52.08 | 14.52 | 1.9787 |
| 2454000000 | 52.07 | 14.52 | 1.9793 |
| 2455000000 | 52.06 | 14.53 | 1.9818 |
| 2456000000 | 52.04 | 14.55 | 1.9850 |
| 2457000000 | 52.03 | 14.54 | 1.9847 |
| 2458000000 | 52.02 | 14.56 | 1.9881 |
| 2459000000 | 51.99 | 14.56 | 1.9890 |
| 2460000000 | 51.98 | 14.55 | 1.9887 |
| 2461000000 | 51.97 | 14.58 | 1.9935 |
| 2462000000 | 51.94 | 14.59 | 1.9954 |
| 2463000000 | 51.93 | 14.60 | 1.9979 |
| 2464000000 | 51.92 | 14.59 | 1.9972 |
| 2465000000 | 51.92 | 14.63 | 2.0031 |
| 2466000000 | 51.89 | 14.63 | 2.0037 |
| 2467000000 | 51.87 | 14.64 | 2.0072 |
| 2468000000 | 51.87 | 14.66 | 2.0105 |
| 2469000000 | 51.85 | 14.66 | 2.0104 |
| 2470000000 | 51.85 | 14.67 | 2.0127 |
| 2471000000 | 51.82 | 14.69 | 2.0165 |
| 2472000000 | 51.80 | 14.68 | 2.0167 |
| 2473000000 | 51.78 | 14.72 | 2.0221 |
| 2474000000 | 51.76 | 14.72 | 2.0229 |
| 2475000000 | 51.77 | 14.74 | 2.0265 |
| 2476000000 | 51.76 | 14.75 | 2.0295 |
| 2477000000 | 51.73 | 14.77 | 2.0322 |
| 2478000000 | 51.72 | 14.78 | 2.0340 |
| 2479000000 | 51.71 | 14.79 | 2.0363 |
| 2480000000 | 51.69 | 14.82 | 2.0414 |

(e' = Dielectric Constant)

(e'' = Loss Factor)

Tested by: SSW
Date : 23-Mar-2009
Frequency: 2450MHz
Mixture: Body Tissue
Tissue temp: 24°C

| Composition | | |
|------------------|----------|--------|
| Tap Water | 0.0g | 0.00% |
| Ultra Pure Water | 25500.0g | 72.67% |
| Sugar | 0.0g | 0.00% |
| Glyco | 9550.0g | 27.22% |
| Salt | 40.0g | 0.11% |
| Preventol D7 | 0.0g | 0.00% |
| Total Weight | 35090.0g | 100.0% |

| Result (FCC) | Dielectric Constant | Conductivity |
|--------------|---------------------|--------------|
| Measured | 52.11 | 1.9750 |
| Target (FCC) | 52.7 | 1.95 |
| Low Limit | 50.065 | 1.8525 |
| High Limit | 55.335 | 2.0475 |
| % Off Target | -1.12 | 1.28 |



Tissue Simulant

ANNEX C

Body Tissue at 2450MHz

| Frequency | e' | e'' | Conductivity |
|-------------------|--------------|--------------|---------------|
| 2440000000 | 54.67 | 14.85 | 2.0134 |
| 2441000000 | 54.65 | 14.85 | 2.0133 |
| 2442000000 | 54.67 | 14.81 | 2.0097 |
| 2443000000 | 54.66 | 14.80 | 2.0093 |
| 2444000000 | 54.66 | 14.80 | 2.0092 |
| 2445000000 | 54.65 | 14.78 | 2.0074 |
| 2446000000 | 54.66 | 14.76 | 2.0056 |
| 2447000000 | 54.63 | 14.73 | 2.0023 |
| 2448000000 | 54.65 | 14.72 | 2.0024 |
| 2449000000 | 54.62 | 14.69 | 1.9992 |
| 2450000000 | 54.61 | 14.69 | 1.9998 |
| 2451000000 | 54.59 | 14.67 | 1.9972 |
| 2452000000 | 54.56 | 14.65 | 1.9955 |
| 2453000000 | 54.55 | 14.61 | 1.9915 |
| 2454000000 | 54.51 | 14.61 | 1.9912 |
| 2455000000 | 54.49 | 14.59 | 1.9893 |
| 2456000000 | 54.46 | 14.55 | 1.9858 |
| 2457000000 | 54.43 | 14.53 | 1.9835 |
| 2458000000 | 54.40 | 14.51 | 1.9807 |
| 2459000000 | 54.36 | 14.49 | 1.9801 |
| 2460000000 | 54.33 | 14.47 | 1.9776 |
| 2461000000 | 54.31 | 14.45 | 1.9758 |
| 2462000000 | 54.27 | 14.43 | 1.9740 |
| 2463000000 | 54.23 | 14.41 | 1.9719 |
| 2464000000 | 54.18 | 14.38 | 1.9690 |
| 2465000000 | 54.15 | 14.36 | 1.9667 |
| 2466000000 | 54.09 | 14.34 | 1.9649 |
| 2467000000 | 54.06 | 14.31 | 1.9616 |
| 2468000000 | 54.03 | 14.31 | 1.9618 |
| 2469000000 | 53.98 | 14.28 | 1.9589 |
| 2470000000 | 53.93 | 14.27 | 1.9581 |
| 2471000000 | 53.88 | 14.27 | 1.9587 |
| 2472000000 | 53.85 | 14.24 | 1.9554 |
| 2473000000 | 53.81 | 14.23 | 1.9553 |
| 2474000000 | 53.75 | 14.23 | 1.9561 |
| 2475000000 | 53.71 | 14.20 | 1.9522 |
| 2476000000 | 53.67 | 14.19 | 1.9519 |
| 2477000000 | 53.64 | 14.17 | 1.9503 |
| 2478000000 | 53.58 | 14.17 | 1.9512 |
| 2479000000 | 53.56 | 14.16 | 1.9506 |
| 2480000000 | 53.54 | 14.17 | 1.9525 |

(e' = Dielectric Constant)

(e'' = Loss Factor)

Tested by: SSW
Date : 30-Mar-2009
Frequency: 2450MHz
Mixture: Body Tissue
Tissue temp: 24°C

| Composition | | |
|------------------|----------|--------|
| Tap Water | 0.0g | 0.00% |
| Ultra Pure Water | 25500.0g | 72.55% |
| Sugar | 0.0g | 0.00% |
| Glyco | 9610.0g | 27.34% |
| Salt | 38.4g | 0.11% |
| Preventol D7 | 0.0g | 0.00% |
| Total Weight | 35148.4g | 100.0% |

| Result (FCC) | Dielectric Constant | Conductivity |
|--------------|---------------------|--------------|
| Measured | 54.61 | 1.9998 |
| Target (FCC) | 52.7 | 1.95 |
| Low Limit | 50.065 | 1.8525 |
| High Limit | 55.335 | 2.0475 |
| % Off Target | 3.62 | 2.55 |



ANNEX D

ANNEX D

SAR VALIDATION RESULTS



ANNEX E

SAR Validation – Body Tissue at 2450MHz (Dipole forward power = 250mW)

Ambient Temperature: $24 \pm 1^{\circ}\text{C}$
Tissue Temperature: $24 \pm 1^{\circ}\text{C}$
Humidity: 54% to 59%

Test Laboratory: TUV SUD PSB PTE LTD.

Date/Time: 3/23/2009 10:21:02 AM

File Name: [2450MHz_System_validation.da4](#)

Program Name: 2450MHz_System validation.da4

Phantom section: Flat Section

DUT: Dipole 2450 MHz

Communication System: CW

Frequency: 2450 MHz

Duty Cycle: 1:1

Medium: Body 2450 MHz Medium parameters used: $f = 2450\text{ MHz}$; $\sigma = 1.94\text{ mho/m}$; $\epsilon_r = 52.1$; $\rho = 1000\text{ kg/m}^3$

DASY4 Configuration:

Electronics: DAE4 Sn627 Calibrated: 6/14/2007

Phantom: SAM 12 Measurement SW: DASY4, V4.7 Build 80

Probe: EX3DV4 - SN3541 ConvF(7.07, 7.07, 7.07) Calibrated: 7/13/2007

Post processing SW: SEMCAD, V1.8 Build 186

Sensor-Surface: 4mm (Mechanical Surface Detection)

2450MHz_Data 1/Area Scan (7x9x1): Measurement grid: $dx=10\text{mm}$, $dy=10\text{mm}$
Maximum value of SAR (measured) = 13.6 mW/g

2450MHz_Data 1/Zoom Scan (7x7x7)/Cube 0: Measurement grid: $dx=5\text{mm}$,
 $dy=5\text{mm}$, $dz=5\text{mm}$

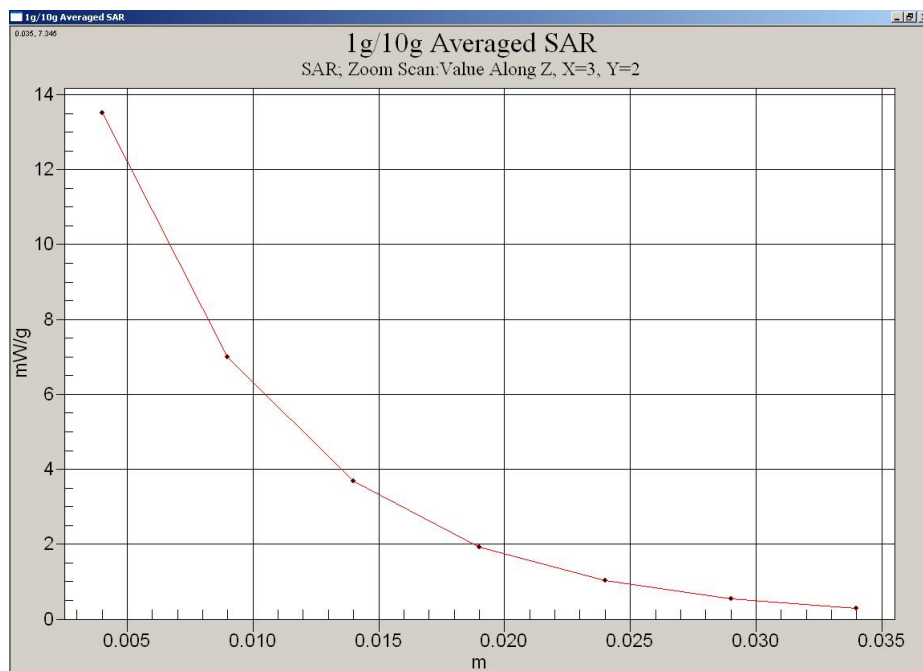
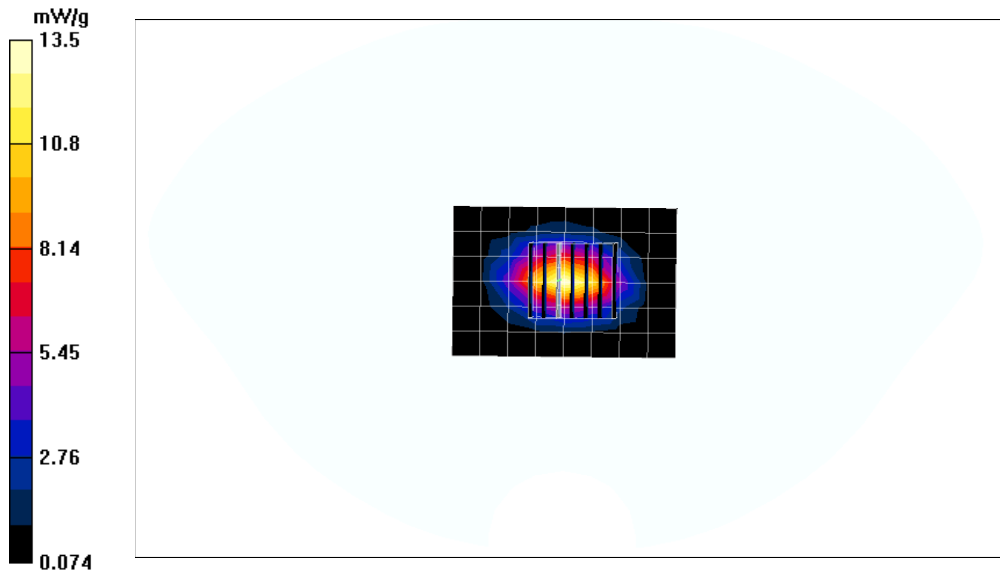
Reference Value = 83.6 V/m; Power Drift = -0.074 dB

Peak SAR (extrapolated) = 23.4 W/kg

SAR(1 g) = 11.8 mW/g; SAR(10 g) = 5.55 mW/g

Maximum value of SAR (measured) = 13.5 mW/g

ANNEX E





ANNEX E

SAR Validation – Body Tissue at 2450MHz (Dipole forward power = 250mW)

Ambient Temperature: $24 \pm 1^{\circ}\text{C}$
Tissue Temperature: $24 \pm 1^{\circ}\text{C}$
Humidity: 54% to 59%

Test Laboratory: PSB Coporation, Telecoms and EMC.

Date/Time: 30/3/2009 12:42:18 PM

File Name: [2450MHz Body System Validation.da4](#)

Program Name: 2450MHz_System validation.da4

Phantom section: Flat Section

DUT: Dipole 2450MHz

Communication System: CW

Frequency: 2450 MHz

Duty Cycle: 1:1

Medium: Body 2450 MHz Medium parameters used: $f = 2450\text{ MHz}$; $\sigma = 2\text{ mho/m}$; $\epsilon_r = 54.6$;
 $\rho = 1000\text{ kg/m}^3$

DASY4 Configuration:

Electronics: DAE4 Sn627 Calibrated: 6/12/2006

Phantom: SAM 12 Measurement SW: DASY4, V4.7 Build 53

Probe: EX3DV4 - SN3542 ConvF(7.77, 7.77, 7.77) Calibrated: 6/23/2006

Post processing SW: SEMCAD, V1.8 Build 172

Sensor-Surface: 4mm (Mechanical Surface Detection)

2450MHz Body_System Validation/Area Scan (7x10x1): Measurement grid:

$dx=10\text{mm}$, $dy=10\text{mm}$

Maximum value of SAR (measured) = 12.4 mW/g

2450MHz Body_System Validation/Zoom Scan (7x7x7)/Cube 0: Measurement

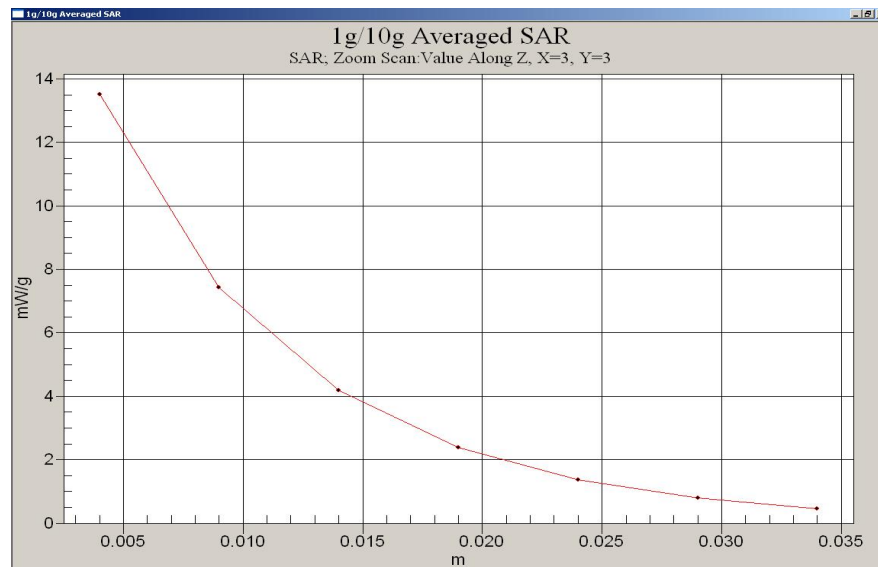
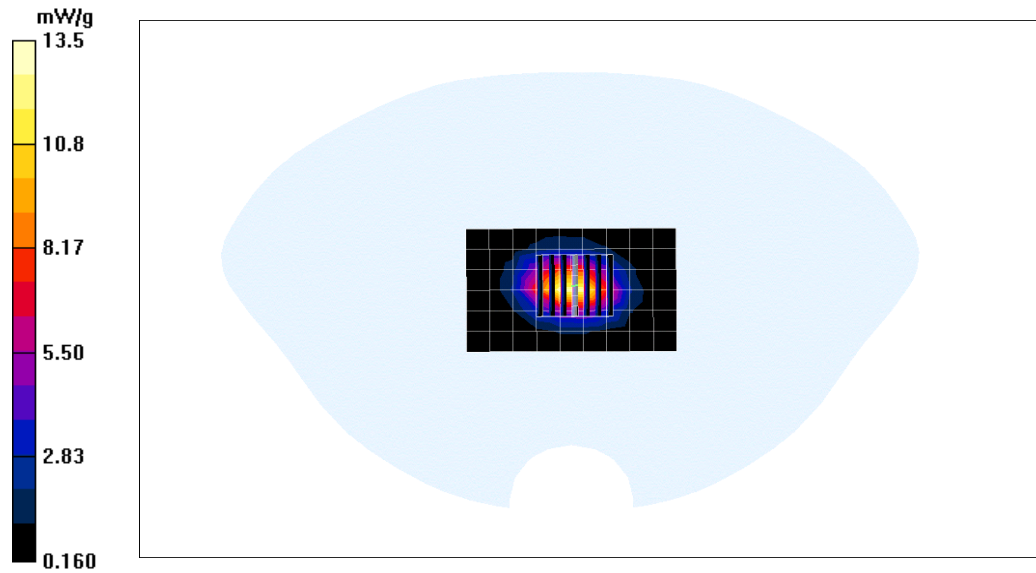
grid: $dx=5\text{mm}$, $dy=5\text{mm}$, $dz=5\text{mm}$

Reference Value = 81.0 V/m; Power Drift = 0.004 dB

Peak SAR (extrapolated) = 22.3 W/kg

ANNEX E

SAR(1 g) = 11.8 mW/g; SAR(10 g) = 5.79 mW/g
Maximum value of SAR (measured) = 13.5 mW/g





ANNEX E

ANNEX E

MEASUREMENT UNCERTAINTY

ANNEX E

Measurement Uncertainty

All test measurement carried out are traceable to national standards. The uncertainty of measurement at a confidence level of 95%, with a coverage of 2, is **±20.6%**.

| Error Description | Uncertainty Value ± % | Probability Distribution | Divisor | ci 1g | Standard Unc.(1g) | Vi or Veff |
|---|-----------------------|--------------------------|---------|------------|-------------------|------------|
| Measurement System | | | | | | |
| Probe Calibration | ± 4.8 | normal | 1 | 1 | ± 4.8 | ∞ |
| Axial isotropy | ± 4.7 | rectangular | √3 | (1-cp)^1/2 | ± 1.9 | ∞ |
| Hemispherical Isotropy | ± 9.6 | rectangular | √3 | (cp)^1/2 | ± 3.9 | ∞ |
| Spatial resolution | ± 0.0 | rectangular | √3 | 1 | ± 0.0 | ∞ |
| Boundary effects | ± 1.0 | rectangular | √3 | 1 | ± 0.6 | ∞ |
| Linearity | ± 4.7 | rectangular | √3 | 1 | ± 2.7 | ∞ |
| System Detection limit | ± 1.0 | rectangular | √3 | 1 | ± 0.6 | ∞ |
| Readout electronics | ± 1.0 | normal | 1 | 1 | ± 1.0 | ∞ |
| Response time | ± 0.8 | rectangular | √3 | 1 | ± 0.5 | ∞ |
| Integration time | ± 2.6 | rectangular | √3 | 1 | ± 1.5 | ∞ |
| RF ambient conditions | ± 3.0 | rectangular | √3 | 1 | ± 1.7 | ∞ |
| Probe Positioning Mechanical Tolerance | ± 0.4 | rectangular | √3 | 1 | ± 0.2 | ∞ |
| Probe Positioning with respect to Phantom Shell | ± 2.9 | rectangular | √3 | 1 | ± 1.7 | ∞ |
| Extrapolation, Interpolation and Integration Algorithms for Max. SAR Evaluation | ± 1.0 | rectangular | √3 | 1 | ± 0.6 | ∞ |
| | | | | | | |
| Test Sample Related | | | | | | |
| Device positioning | ± 2.9 | normal | 1 | 1 | ± 2.9 | 145 |
| Device holder uncertainty | ± 3.6 | normal | 1 | 1 | ± 3.6 | 5 |
| Power drift | ± 5.0 | rectangular | √3 | 1 | ± 2.9 | ∞ |
| | | | | | | |
| Phantom and Tissue Parameters | | | | | | |
| Phantom uncertainty | ± 4.0 | rectangular | √3 | 1 | ± 2.3 | ∞ |
| Liquid conductivity (target) | ± 5.0 | rectangular | √3 | 0.64 | ± 1.8 | ∞ |
| Liquid conductivity (meas) | ± 2.5 | normal | 1 | 0.64 | ± 1.6 | ∞ |
| Liquid permittivity (target) | ± 5.0 | rectangular | √3 | 0.6 | ± 1.7 | ∞ |
| Liquid permittivity (meas) | ± 2.5 | normal | 1 | 0.6 | ± 1.5 | ∞ |
| | | | | | | |
| Combined Standard Uncertainty | | | | | ± 10.3 | 330 |
| Coverage Factor for 95% | | k=2 | | | | |
| Extended Standard Uncertainty | | | | | ± 20.6 | |



SAR PROBE CALIBRATION CERTIFICATES

ANNEX F

ANNEX F

SAR PROBE CALIBRATION CERTIFICATES



SAR PROBE CALIBRATION CERTIFICATES

ANNEX F

Calibration Laboratory of
Schmid & Partner
Engineering AG
Zeughausstrasse 43, 8004 Zurich, Switzerland



S Schweizerischer Kalibrierdienst
C Service suisse d'étalonnage
S Servizio svizzero di taratura
S Swiss Calibration Service

Accredited by the Swiss Accreditation Service (SAS)
The Swiss Accreditation Service is one of the signatories to the EA
Multilateral Agreement for the recognition of calibration certificates

Accreditation No.: **SCS 108**

Client **TUV SUD PSB**

Certificate No: **EX3-3541_Jun08**

CALIBRATION CERTIFICATE

Object **EX3DV4 - SN:3541**

Calibration procedure(s) **QA CAL-01.v6 and QA CAL-23.v3
Calibration procedure for dosimetric E-field probes**

Calibration date: **June 23, 2008**

Condition of the calibrated item **In Tolerance**

This calibration certificate documents the traceability to national standards, which realize the physical units of measurements (SI).
The measurements and the uncertainties with confidence probability are given on the following pages and are part of the certificate.

All calibrations have been conducted in the closed laboratory facility: environment temperature $(22 \pm 3)^{\circ}\text{C}$ and humidity $< 70\%$.

Calibration Equipment used (M&TE critical for calibration)

| Primary Standards | ID # | Cal Date (Certificate No.) | Scheduled Calibration |
|----------------------------|-----------------|-------------------------------|-----------------------|
| Power meter E4419B | GB41293874 | 1-Apr-08 (No. 217-00788) | Apr-09 |
| Power sensor E4412A | MY41495277 | 1-Apr-08 (No. 217-00788) | Apr-09 |
| Power sensor E4412A | MY41498087 | 1-Apr-08 (No. 217-00788) | Apr-09 |
| Reference 3 dB Attenuator | SN: S5054 (3c) | 8-Aug-07 (No. 217-00719) | Aug-08 |
| Reference 20 dB Attenuator | SN: S5066 (20b) | 31-Mar-08 (No. 217-00787) | Apr-09 |
| Reference 30 dB Attenuator | SN: S5129 (30b) | 8-Aug-07 (No. 217-00720) | Aug-08 |
| Reference Probe ES3DV2 | SN: 3013 | 2-Jan-08 (No. ES3-3013_Jan08) | Jan-09 |
| DAE4 | SN: 660 | 3-Sep-07 (No. DAE4-660_Sep07) | Sep-08 |

| Secondary Standards | ID # | Check Date (in house) | Scheduled Check |
|---------------------------|--------------|-----------------------------------|------------------------|
| RF generator HP 8648C | US3642U01700 | 4-Aug-99 (in house check Oct-07) | In house check: Oct-09 |
| Network Analyzer HP 8753E | US37390585 | 18-Oct-01 (in house check Oct-07) | In house check: Oct-08 |

| | | | |
|----------------|-------------------------------|--------------------------------------|---------------|
| Calibrated by: | Name Klara Potkovic | Function Technical Manager | Signature |
| Approved by: | Name Niels Kuster | Function Quality Manager | Signature |

Issued: June 25, 2008

This calibration certificate shall not be reproduced except in full without written approval of the laboratory.

Certificate No: EX3-3541_Jun08

Page 1 of 9



SAR PROBE CALIBRATION CERTIFICATES

ANNEX F

Calibration Laboratory of
Schmid & Partner
Engineering AG
Zeughausstrasse 43, 8004 Zurich, Switzerland



S Schweizerischer Kalibrierdienst
C Service suisse d'étalonnage
S Servizio svizzero di taratura
S Swiss Calibration Service

Accredited by the Swiss Accreditation Service (SAS)
The Swiss Accreditation Service is one of the signatories to the EA
Multilateral Agreement for the recognition of calibration certificates

Accreditation No.: **SCS 108**

Glossary:

| | |
|--------------------------|--|
| TSL | tissue simulating liquid |
| NORM _{x,y,z} | sensitivity in free space |
| ConvF | sensitivity in TSL / NORM _{x,y,z} |
| DCP | diode compression point |
| Polarization ϕ | ϕ rotation around probe axis |
| Polarization ϑ | ϑ rotation around an axis that is in the plane normal to probe axis (at measurement center), i.e., $\vartheta = 0$ is normal to probe axis |

Calibration is Performed According to the Following Standards:

- IEEE Std 1528-2003, "IEEE Recommended Practice for Determining the Peak Spatial-Averaged Specific Absorption Rate (SAR) in the Human Head from Wireless Communications Devices: Measurement Techniques", December 2003
- IEC 62209-1, "Procedure to measure the Specific Absorption Rate (SAR) for hand-held devices used in close proximity to the ear (frequency range of 300 MHz to 3 GHz)", February 2005

Methods Applied and Interpretation of Parameters:

- NORM_{x,y,z}:** Assessed for E-field polarization $\vartheta = 0$ ($f \leq 900$ MHz in TEM-cell; $f > 1800$ MHz: R22 waveguide). NORM_{x,y,z} are only intermediate values, i.e., the uncertainties of NORM_{x,y,z} does not effect the E²-field uncertainty inside TSL (see below ConvF).
- NORM(f)_{x,y,z} = NORM_{x,y,z} * frequency_response** (see Frequency Response Chart). This linearization is implemented in DASY4 software versions later than 4.2. The uncertainty of the frequency response is included in the stated uncertainty of ConvF.
- DCP_{x,y,z}:** DCP are numerical linearization parameters assessed based on the data of power sweep (no uncertainty required). DCP does not depend on frequency nor media.
- ConvF and Boundary Effect Parameters:** Assessed in flat phantom using E-field (or Temperature Transfer Standard for $f \leq 800$ MHz) and inside waveguide using analytical field distributions based on power measurements for $f > 800$ MHz. The same setups are used for assessment of the parameters applied for boundary compensation (alpha, depth) of which typical uncertainty values are given. These parameters are used in DASY4 software to improve probe accuracy close to the boundary. The sensitivity in TSL corresponds to NORM_{x,y,z} * ConvF whereby the uncertainty corresponds to that given for ConvF. A frequency dependent ConvF is used in DASY version 4.4 and higher which allows extending the validity from ± 50 MHz to ± 100 MHz.
- Spherical isotropy (3D deviation from isotropy):** in a field of low gradients realized using a flat phantom exposed by a patch antenna.
- Sensor Offset:** The sensor offset corresponds to the offset of virtual measurement center from the probe tip (on probe axis). No tolerance required.



SAR PROBE CALIBRATION CERTIFICATES

ANNEX F

Probe EX3DV4

SN:3541

| | |
|------------------|---------------|
| Manufactured: | May 3, 2004 |
| Last calibrated: | July 13, 2007 |
| Recalibrated: | June 23, 2008 |

Calibrated for DASY Systems

(Note: non-compatible with DASY2 system!)

SAR PROBE CALIBRATION CERTIFICATES

ANNEX F

EX3DV4 SN:3541

June 23, 2008

DASY - Parameters of Probe: EX3DV4 SN:3541

Sensitivity in Free Space^A

Diode Compression^B

| | | | | |
|-------|--------------|-------------------------------------|-------|-------|
| NormX | 0.44 ± 10.1% | $\mu\text{V}/(\text{V}/\text{m})^2$ | DCP X | 89 mV |
| NormY | 0.39 ± 10.1% | $\mu\text{V}/(\text{V}/\text{m})^2$ | DCP Y | 89 mV |
| NormZ | 0.45 ± 10.1% | $\mu\text{V}/(\text{V}/\text{m})^2$ | DCP Z | 89 mV |

Sensitivity in Tissue Simulating Liquid (Conversion Factors)

Please see Page 8.

Boundary Effect

TSL 900 MHz Typical SAR gradient: 5 % per mm

| | | | |
|---|------------------------------|--------|--------|
| Sensor Center to Phantom Surface Distance | | 2.0 mm | 3.0 mm |
| SAR _{be} [%] | Without Correction Algorithm | 9.6 | 6.4 |
| SAR _{be} [%] | With Correction Algorithm | 0.5 | 0.3 |

TSL 1750 MHz Typical SAR gradient: 10 % per mm

| | | | |
|---|------------------------------|--------|--------|
| Sensor Center to Phantom Surface Distance | | 2.0 mm | 3.0 mm |
| SAR _{be} [%] | Without Correction Algorithm | 5.9 | 3.2 |
| SAR _{be} [%] | With Correction Algorithm | 0.6 | 0.4 |

Sensor Offset

Probe Tip to Sensor Center 1.0 mm

The reported uncertainty of measurement is stated as the standard uncertainty of measurement multiplied by the coverage factor $k=2$, which for a normal distribution corresponds to a coverage probability of approximately 95%.

^A The uncertainties of NormX,Y,Z do not affect the E^2 -field uncertainty inside TSL (see Page 8).

^B Numerical linearization parameter: uncertainty not required.



SAR PROBE CALIBRATION CERTIFICATES

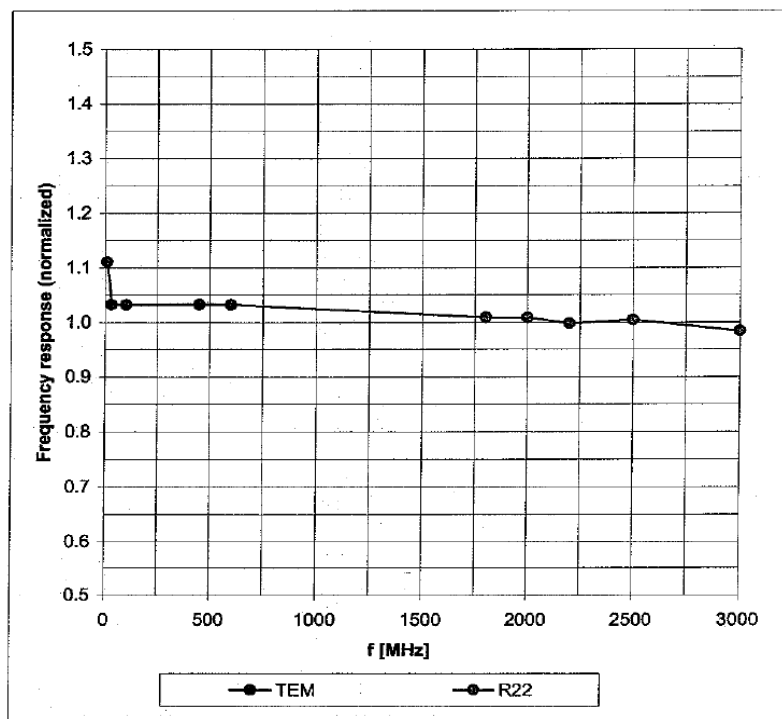
ANNEX F

EX3DV4 SN:3541

June 23, 2008

Frequency Response of E-Field

(TEM-Cell:ifi110 EXX, Waveguide: R22)



Uncertainty of Frequency Response of E-field: $\pm 6.3\%$ ($k=2$)

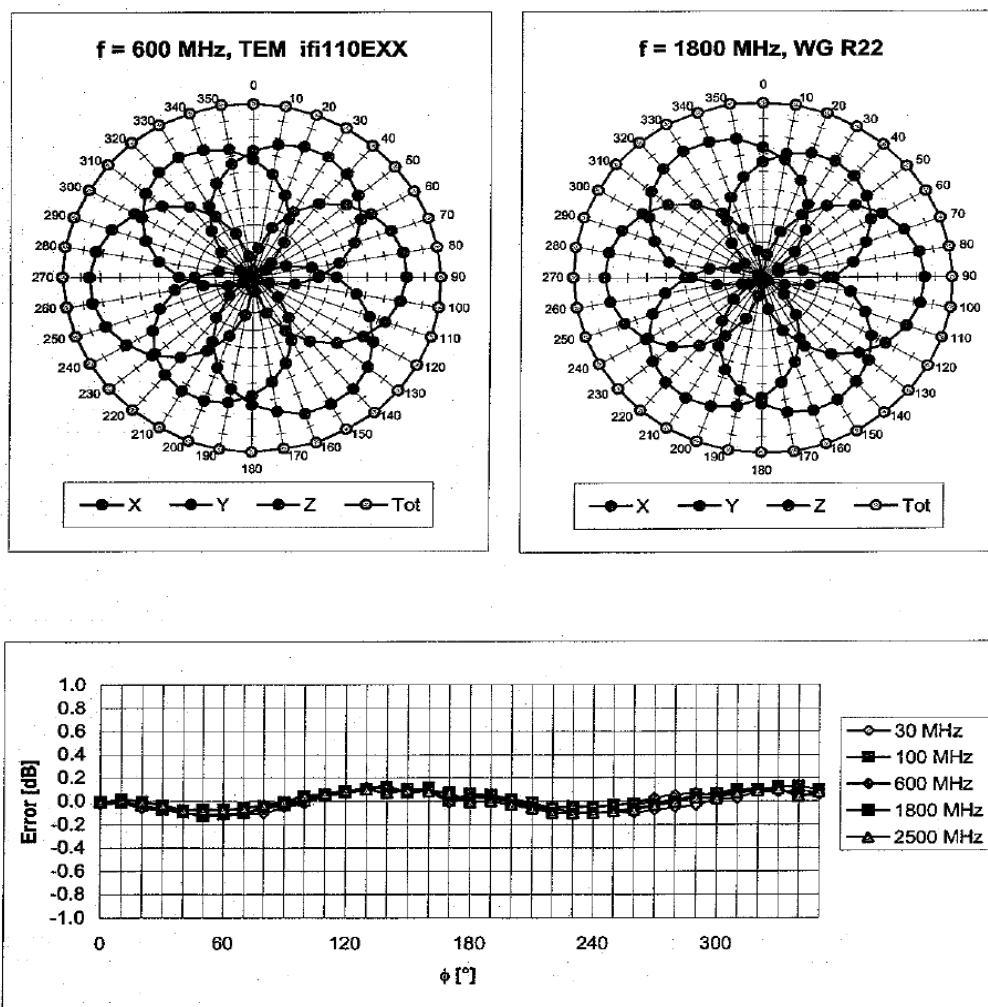
SAR PROBE CALIBRATION CERTIFICATES

ANNEX F

EX3DV4 SN:3541

June 23, 2008

Receiving Pattern (ϕ), $\theta = 0^\circ$



Uncertainty of Axial Isotropy Assessment: $\pm 0.5\%$ ($k=2$)

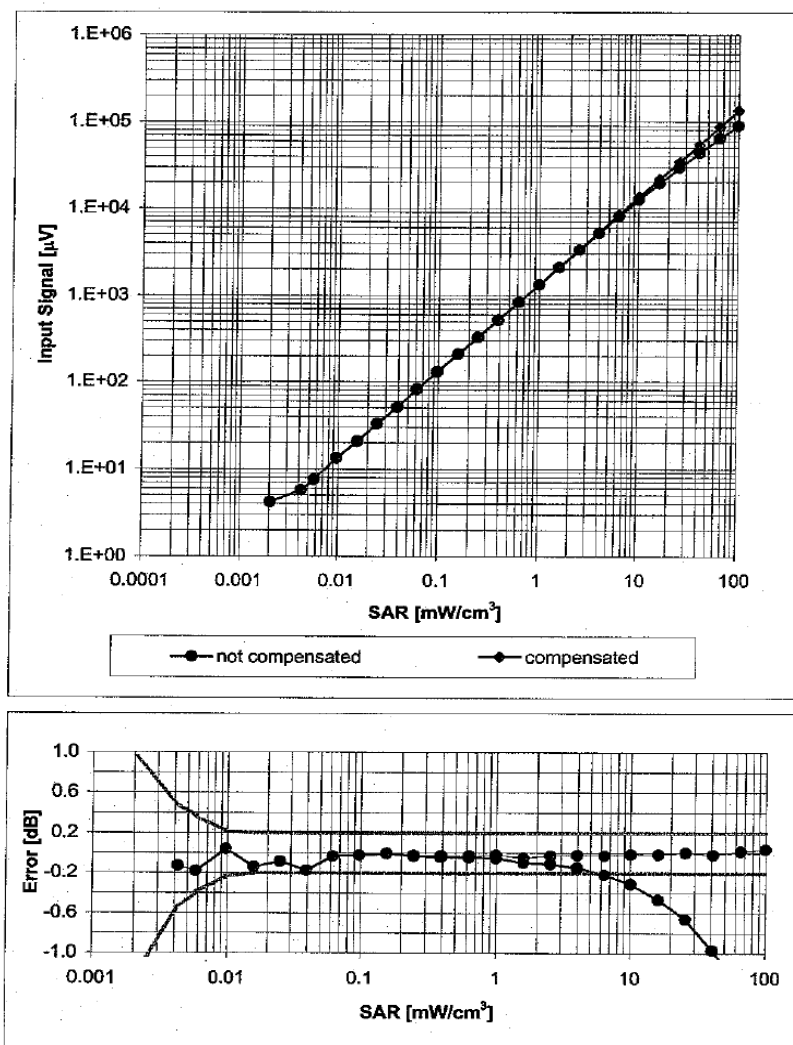
SAR PROBE CALIBRATION CERTIFICATES

ANNEX F

EX3DV4 SN:3541

June 23, 2008

Dynamic Range f(SAR_{head})
(Waveguide R22, f = 1800 MHz)



Uncertainty of Linearity Assessment: $\pm 0.6\%$ (k=2)

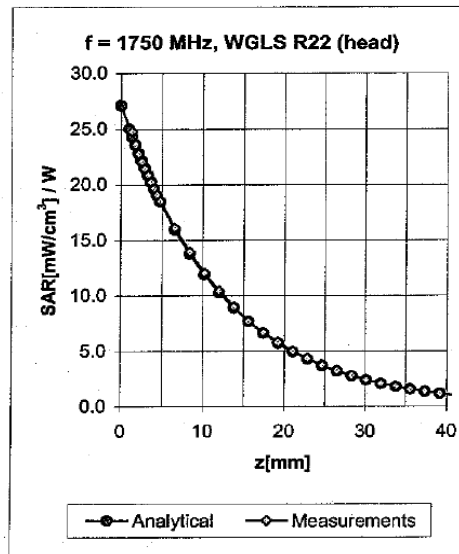
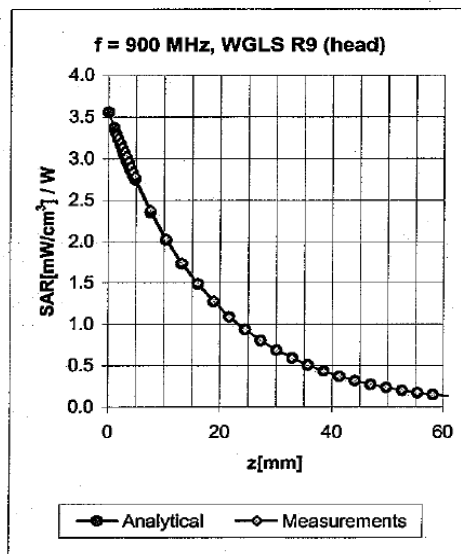
SAR PROBE CALIBRATION CERTIFICATES

ANNEX F

EX3DV4 SN:3541

June 23, 2008

Conversion Factor Assessment



| f [MHz] | Validity [MHz] ^c | TSL | Permittivity | Conductivity | Alpha | Depth | ConvF Uncertainty |
|---------|-----------------------------|------|--------------|--------------|-------|-------|--------------------|
| 900 | ± 50 / ± 100 | Head | 41.5 ± 5% | 0.97 ± 5% | 0.51 | 0.80 | 9.45 ± 11.0% (k=2) |
| 1750 | ± 50 / ± 100 | Head | 40.1 ± 5% | 1.37 ± 5% | 0.69 | 0.59 | 8.53 ± 11.0% (k=2) |
| 1900 | ± 50 / ± 100 | Head | 40.0 ± 5% | 1.40 ± 5% | 0.74 | 0.56 | 8.27 ± 11.0% (k=2) |
| 2450 | ± 50 / ± 100 | Head | 39.2 ± 5% | 1.80 ± 5% | 0.62 | 0.62 | 7.55 ± 11.0% (k=2) |
| 900 | ± 50 / ± 100 | Body | 55.0 ± 5% | 1.05 ± 5% | 0.71 | 0.72 | 9.47 ± 11.0% (k=2) |
| 1750 | ± 50 / ± 100 | Body | 53.4 ± 5% | 1.49 ± 5% | 0.70 | 0.61 | 8.23 ± 11.0% (k=2) |
| 1900 | ± 50 / ± 100 | Body | 53.3 ± 5% | 1.52 ± 5% | 0.72 | 0.60 | 7.85 ± 11.0% (k=2) |
| 2450 | ± 50 / ± 100 | Body | 52.7 ± 5% | 1.95 ± 5% | 0.55 | 0.74 | 7.40 ± 11.0% (k=2) |

^c The validity of ± 100 MHz only applies for DASY v4.4 and higher (see Page 2). The uncertainty is the RSS of the ConvF uncertainty at calibration frequency and the uncertainty for the indicated frequency band.



SAR PROBE CALIBRATION CERTIFICATES

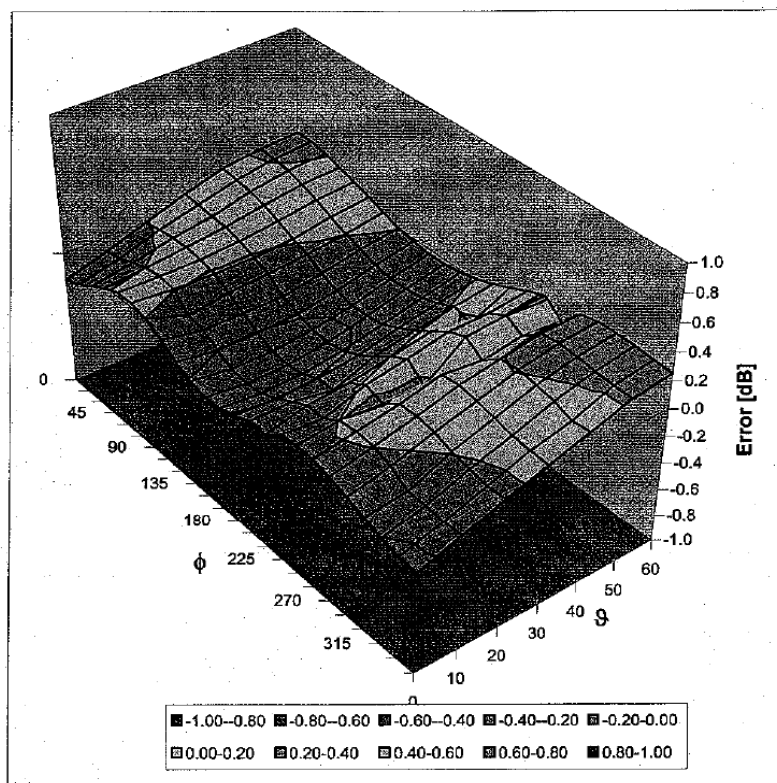
ANNEX F

EX3DV4 SN:3541

June 23, 2008

Deviation from Isotropy in HSL

Error (ϕ , θ), $f = 900$ MHz



Uncertainty of Spherical Isotropy Assessment: $\pm 2.6\%$ ($k=2$)



SAR PROBE CALIBRATION CERTIFICATES

ANNEX F

**Calibration Laboratory of
Schmid & Partner
Engineering AG**
Zeughausstrasse 43, 8004 Zurich, Switzerland



S Schweizerischer Kalibrierdienst
C Service suisse d'étalonnage
S Servizio svizzero di taratura
S Swiss Calibration Service

Accredited by the Swiss Accreditation Service (SAS)
The Swiss Accreditation Service is one of the signatories to the EA
Multilateral Agreement for the recognition of calibration certificates

Accreditation No.: **SCS 108**

Client **TUV SUD PSB**

Certificate No. **DAE4-627_Jun08**

CALIBRATION CERTIFICATE

Object **DAE4 - SD 000 D04 BA - SN: 627**

Calibration procedure(s) **QA-CAL-06-v12**
Calibration procedure for the data acquisition electronics (DAE)

Calibration date: **June 24, 2008**

Condition of the calibrated item **In Tolerance**

This calibration certificate documents the traceability to national standards, which realize the physical units of measurements (SI).
The measurements and the uncertainties with confidence probability are given on the following pages and are part of the certificate.

All calibrations have been conducted in the closed laboratory facility: environment temperature $(22 \pm 3)^{\circ}\text{C}$ and humidity $< 70\%$.

Calibration Equipment used (M&TE critical for calibration)

| Primary Standards | ID # | Cal Date (Certificate No.) | Scheduled Calibration |
|-----------------------------------|--------------------|----------------------------|------------------------|
| Fluke Process Calibrator Type 702 | SN: 6295803 | 04-Oct-07 (No: 6467) | Oct-08 |
| Keithley Multimeter Type 2001 | SN: 0810278 | 03-Oct-07 (No: 6465) | Oct-08 |
| Secondary Standards | ID # | Check Date (in house) | Scheduled Check |
| Calibrator Box V1.1 | SE UMS 006 AB 1004 | 06-Jun-08 (in house check) | In house check: Jun-09 |

Calibrated by: **Name** **Function** **Signature**
Dominique Steffen **Technician**

Approved by: **Fin Bornholt** **R&D Director**

Issued: June 24, 2008

This calibration certificate shall not be reproduced except in full without written approval of the laboratory.



SAR PROBE CALIBRATION CERTIFICATES

ANNEX F

**Calibration Laboratory of
Schmid & Partner
Engineering AG**
Zeughausstrasse 43, 8004 Zurich, Switzerland



S Schweizerischer Kalibrierdienst
C Service suisse d'étalonnage
S Servizio svizzero di taratura
S Swiss Calibration Service

Accredited by the Swiss Accreditation Service (SAS)
The Swiss Accreditation Service is one of the signatories to the EA
Multilateral Agreement for the recognition of calibration certificates

Accreditation No.: **SCS 108**

Glossary

DAE data acquisition electronics
Connector angle information used in DASY system to align probe sensor X to the robot coordinate system.

Methods Applied and Interpretation of Parameters

- **DC Voltage Measurement:** Calibration Factor assessed for use in DASY system by comparison with a calibrated instrument traceable to national standards. The figure given corresponds to the full scale range of the voltmeter in the respective range.
- **Connector angle:** The angle of the connector is assessed measuring the angle mechanically by a tool inserted. Uncertainty is not required.
- The following parameters as documented in the Appendix contain technical information as a result from the performance test and require no uncertainty.
 - **DC Voltage Measurement Linearity:** Verification of the Linearity at +10% and -10% of the nominal calibration voltage. Influence of offset voltage is included in this measurement.
 - **Common mode sensitivity:** Influence of a positive or negative common mode voltage on the differential measurement.
 - **Channel separation:** Influence of a voltage on the neighbor channels not subject to an input voltage.
 - **AD Converter Values with inputs shorted:** Values on the internal AD converter corresponding to zero input voltage
 - **Input Offset Measurement:** Output voltage and statistical results over a large number of zero voltage measurements.
 - **Input Offset Current:** Typical value for information; Maximum channel input offset current, not considering the input resistance.
 - **Input resistance:** DAE input resistance at the connector, during internal auto-zeroing and during measurement.
 - **Low Battery Alarm Voltage:** Typical value for information. Below this voltage, a battery alarm signal is generated.
 - **Power consumption:** Typical value for information. Supply currents in various operating modes.



SAR PROBE CALIBRATION CERTIFICATES

ANNEX F

DC Voltage Measurement

A/D - Converter Resolution nominal

High Range: 1LSB = 6.1 μ V, full range = -100...+300 mV

Low Range: 1LSB = 61nV, full range = -1.....+3mV

DASY measurement parameters: Auto Zero Time: 3 sec; Measuring time: 3 sec

| Calibration Factors | X | Y | Z |
|---------------------|--------------------------|--------------------------|--------------------------|
| High Range | 405.023 \pm 0.1% (k=2) | 404.027 \pm 0.1% (k=2) | 404.480 \pm 0.1% (k=2) |
| Low Range | 3.96098 \pm 0.7% (k=2) | 3.96430 \pm 0.7% (k=2) | 3.96793 \pm 0.7% (k=2) |

Connector Angle

| | |
|---|-----------------------------------|
| Connector Angle to be used in DASY system | 204 $^{\circ}$ \pm 1 $^{\circ}$ |
|---|-----------------------------------|



SAR PROBE CALIBRATION CERTIFICATES

ANNEX F

Appendix

1. DC Voltage Linearity

| High Range | Input (μV) | Reading (μV) | Error (%) |
|-------------------|-------------------------|---------------------------|-----------|
| Channel X + Input | 200000 | 200000.5 | 0.00 |
| Channel X + Input | 20000 | 20005.24 | 0.03 |
| Channel X - Input | 20000 | -19997.03 | -0.01 |
| Channel Y + Input | 200000 | 199999.6 | 0.00 |
| Channel Y + Input | 20000 | 20008.45 | 0.04 |
| Channel Y - Input | 20000 | -20004.40 | 0.02 |
| Channel Z + Input | 200000 | 199999.5 | 0.00 |
| Channel Z + Input | 20000 | 20001.90 | 0.01 |
| Channel Z - Input | 20000 | -19999.97 | 0.00 |

| Low Range | Input (μV) | Reading (μV) | Error (%) |
|-------------------|-------------------------|---------------------------|-----------|
| Channel X + Input | 2000 | 1999.9 | 0.00 |
| Channel X + Input | 200 | 200.05 | 0.03 |
| Channel X - Input | 200 | -200.16 | 0.08 |
| Channel Y + Input | 2000 | 1999.9 | 0.00 |
| Channel Y + Input | 200 | 199.24 | -0.38 |
| Channel Y - Input | 200 | -200.84 | 0.42 |
| Channel Z + Input | 2000 | 1999.9 | 0.00 |
| Channel Z + Input | 200 | 199.12 | -0.44 |
| Channel Z - Input | 200 | -200.87 | 0.44 |

2. Common mode sensitivity

DASY measurement parameters: Auto Zero Time: 3 sec; Measuring time: 3 sec

| | Common mode Input Voltage (mV) | High Range Average Reading (μV) | Low Range Average Reading (μV) |
|-----------|--------------------------------|--|---|
| Channel X | 200 | 15.03 | 14.38 |
| | - 200 | -13.32 | -13.25 |
| Channel Y | 200 | 8.11 | 7.69 |
| | - 200 | -7.94 | -8.46 |
| Channel Z | 200 | 7.68 | 7.22 |
| | - 200 | -8.32 | -8.92 |

3. Channel separation

DASY measurement parameters: Auto Zero Time: 3 sec; Measuring time: 3 sec

| | Input Voltage (mV) | Channel X (μV) | Channel Y (μV) | Channel Z (μV) |
|-----------|--------------------|-----------------------------|-----------------------------|-----------------------------|
| Channel X | 200 | - | 3.80 | -0.58 |
| Channel Y | 200 | 0.95 | - | 4.99 |
| Channel Z | 200 | -0.43 | -0.86 | - |

SAR PROBE CALIBRATION CERTIFICATES

ANNEX F

4. AD-Converter Values with inputs shorted

DASY measurement parameters: Auto Zero Time: 3 sec; Measuring time: 3 sec

| | High Range (LSB) | Low Range (LSB) |
|-----------|------------------|-----------------|
| Channel X | 15897 | 16674 |
| Channel Y | 16261 | 16405 |
| Channel Z | 15840 | 16234 |

5. Input Offset Measurement

DASY measurement parameters: Auto Zero Time: 3 sec; Measuring time: 3 sec

Input 10M Ω

| | Average (μ V) | min. Offset (μ V) | max. Offset (μ V) | Std. Deviation (μ V) |
|-----------|--------------------|------------------------|------------------------|---------------------------|
| Channel X | -0.42 | -1.54 | 0.98 | 0.37 |
| Channel Y | -1.36 | -2.42 | 0.07 | 0.41 |
| Channel Z | -0.32 | -2.65 | 2.10 | 0.38 |

6. Input Offset Current

Nominal Input circuitry offset current on all channels: <25fA

7. Input Resistance

| | Zeroing (MOhm) | Measuring (MOhm) |
|-----------|----------------|------------------|
| Channel X | 0.2001 | 199.3 |
| Channel Y | 0.2001 | 199.9 |
| Channel Z | 0.2001 | 200.1 |

8. Low Battery Alarm Voltage (verified during pre test)

| Typical values | Alarm Level (VDC) |
|----------------|-------------------|
| Supply (+ Vcc) | +7.9 |
| Supply (- Vcc) | -7.6 |

9. Power Consumption (verified during pre test)

| Typical values | Switched off (mA) | Stand by (mA) | Transmitting (mA) |
|----------------|-------------------|---------------|-------------------|
| Supply (+ Vcc) | +0.0 | +6 | +14 |
| Supply (- Vcc) | -0.01 | -8 | -9 |



REFERENCES

ANNEX G

ANNEX G
REFERENCES

REFERENCES

ANNEX G

The methods and procedures used for the measurements contained in this report are details in the following reference standards:

| Publications | Year | Title |
|---|------|--|
| Supplement C (Edition 01-01) to FCC OET Bulletin 65 (Edition 97-01) | 2001 | "Evaluating Compliance with FCC Guidelines for Human Exposure to radio Frequency Fields" |
| IEEE Standard 1528-200X | 2000 | "Product Performance Standards Relative to the safe Use of Electromagnetic Energy" |
| ANSI/IEEE C95.3 | 1992 | "Recommended Practice for the Measurement of Potentially Hazardous Electromagnetic Fields - RF and Microwave" |
| ANSI/IEEE C95.1 | 1992 | "Safety Levels with Respect to Human Exposure to Radio Frequency Electromagnetic Fields, 3kHz to 300GHz" |
| EN62209-1 | 2006 | Procedure to determine the Specific Absorption Rate (SAR) for hand-held devices used in close proximity to the ear (300MHz – 3GHz) |