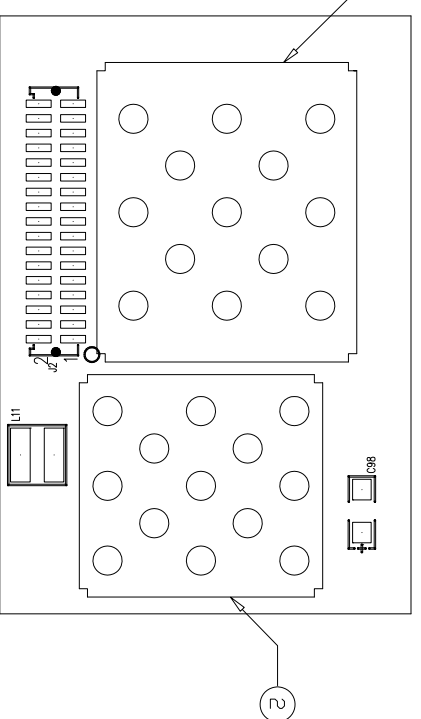
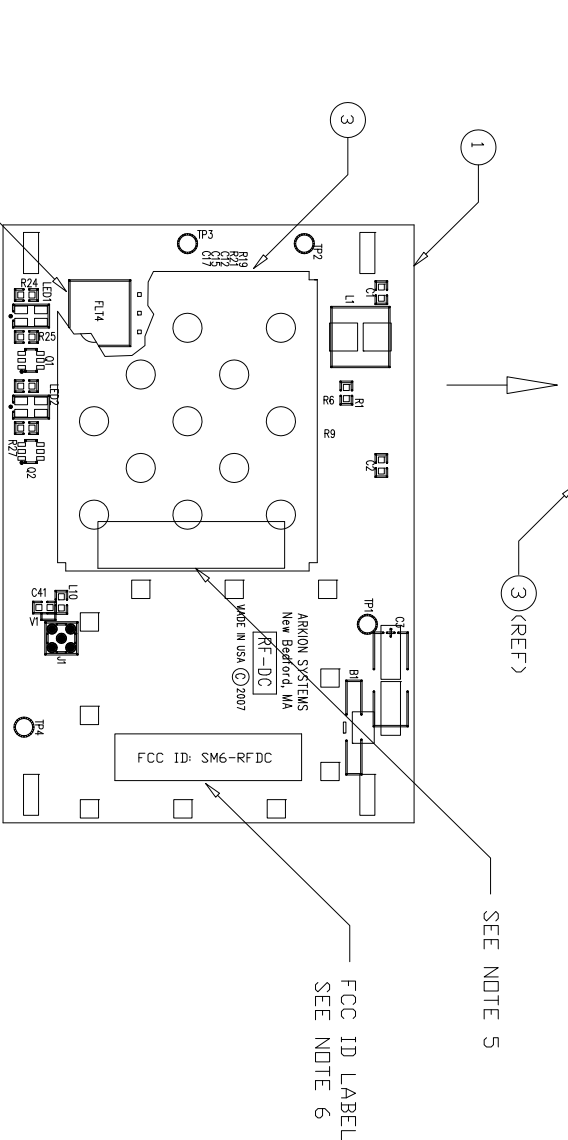
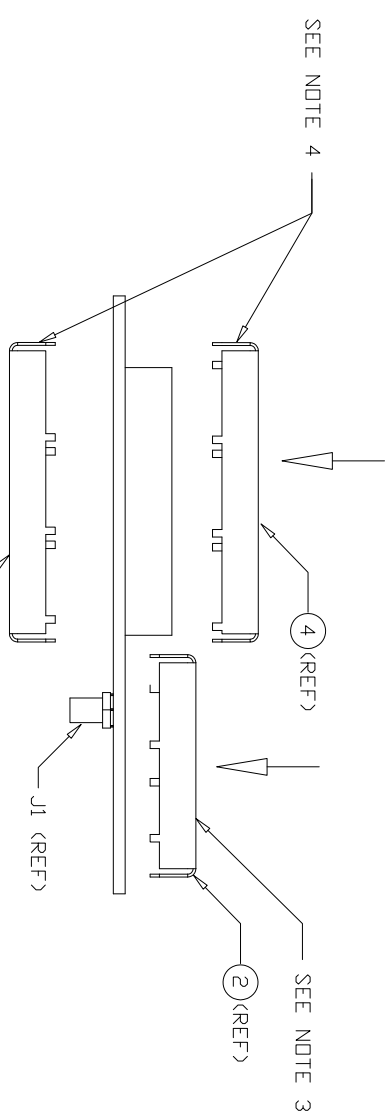


REVISIONS			
REV	DESCRIPTION	DATE	APPROVED
A00	RELEASED PER ECN070040	10/12/07	
A01	REVISED PER ECN070046	11/19/07	
A02	REVISED PER ECN080007	02/06/08	
A03	REVISED PER ECN080020	02/28/08	
A04	REVISED PER ECN080033	09/22/09	
A05	REVISED PER ECN10002	02/12/10	
A06	REVISED PER ECN10015	08/1/10	



SOLDER SIDE



COMPONENT SIDE

NOTES: UNLESS OTHERWISE SPECIFIED

- 1) THIS IS A STATIC SENSITIVE ASSEMBLY- USE STATIC ELIMINATING MEASURES DURING ASSEMBLY AND HANDLING.
- 2) MANUFACTURE TO IPC 610A CLASS 2 WORKMANSHIP STANDARDS.
- 3) AFTER ALL REWORK MODIFICATIONS HAVE BEEN COMPLETED AND THE PVA HAS PASSED THE BOARD LEVEL TEST, LINE UP THE TABS OF THE PROCESSOR SHIELD (ITEM 2) WITH THE HOLES IN THAT SECTION ON THE SOLDER SIDE. INSERT INTO THE HOLES AND SOLDER DOWN IN PLACE. TACK ONLY IN THE CORNERS AND THE MIDDLE OF THE SHIELD.
- 4) LINE UP THE TABS OF THE TOP SHIELD (ITEM 3) AND THE TABS OF THE BOTTOM SHIELD (ITEM 4) WITH THE HOLES ON THE BOARD. INSERT BY SQUEEZING THEM TOGETHER AND TACK ONLY IN THE CORNERS AND THE MIDDLE OF THE SHIELD. SPECIAL CARE SHOULD BE GIVEN TO THE AREA NEAR FLT4 TO MINIMIZE THE HEATING AND DWELL TIME - TACKING IS NOT REQUIRED IN THAT CORNER.
- 5) ONCE ALL SHIELDS ARE INSTALLED, APPLY LABEL WITH THE 803- LEVEL PART NUMBER AND REVISION IN APPROX AREA SHOWN.
- 6) APPLY LABEL (ITEM5) WITH THE FCC PART 15 ID NUMBER IN THE APPROX AREA SHOWN.

FOR PRODUCT STRUCTURE SEE 803-0052-005

MUELLER CONFIDENTIAL

THIS DRAWING CONTAINS INFORMATION OF A CONFIDENTIAL AND/OR PROPRIETARY NATURE. NEITHER THIS DRAWING NOR ANY OF THE INFORMATION CONTAINED HEREIN MAY BE REPRODUCED, COPIED, OR DISCLOSED TO OR FOR THE BENEFIT OF ANY OTHER PERSON OR ENTITY WITHOUT THE EXPRESS WRITTEN CONSENT OF MUELLER.

DWG File: 803-0052-005_A06
UNLESS OTHERWISE SPECIFIED, ALL DIMENSIONS ARE IN INCHES OR IN MILLIMETERS

TOLERANCES

DECIMALS ANGLES
X ± .03 ± 1/2°
XX ± .01
XXX ± .005

MATERIAL

FINISH

APPROVALS

DRAWN BY: MFM DATE: 11/11/07

CHECKED BY:

APPROVED BY:

APPROVED BY:

Mueller Systems

**SIELD ASSEMBLY DWG
RF DAUGHTER CARD**

SIZE	PART NO.	REV.
D	803-0052-005	A06
SCALE: NONE	DO NOT SCALE DRAWING	SHEET 1 OF 1