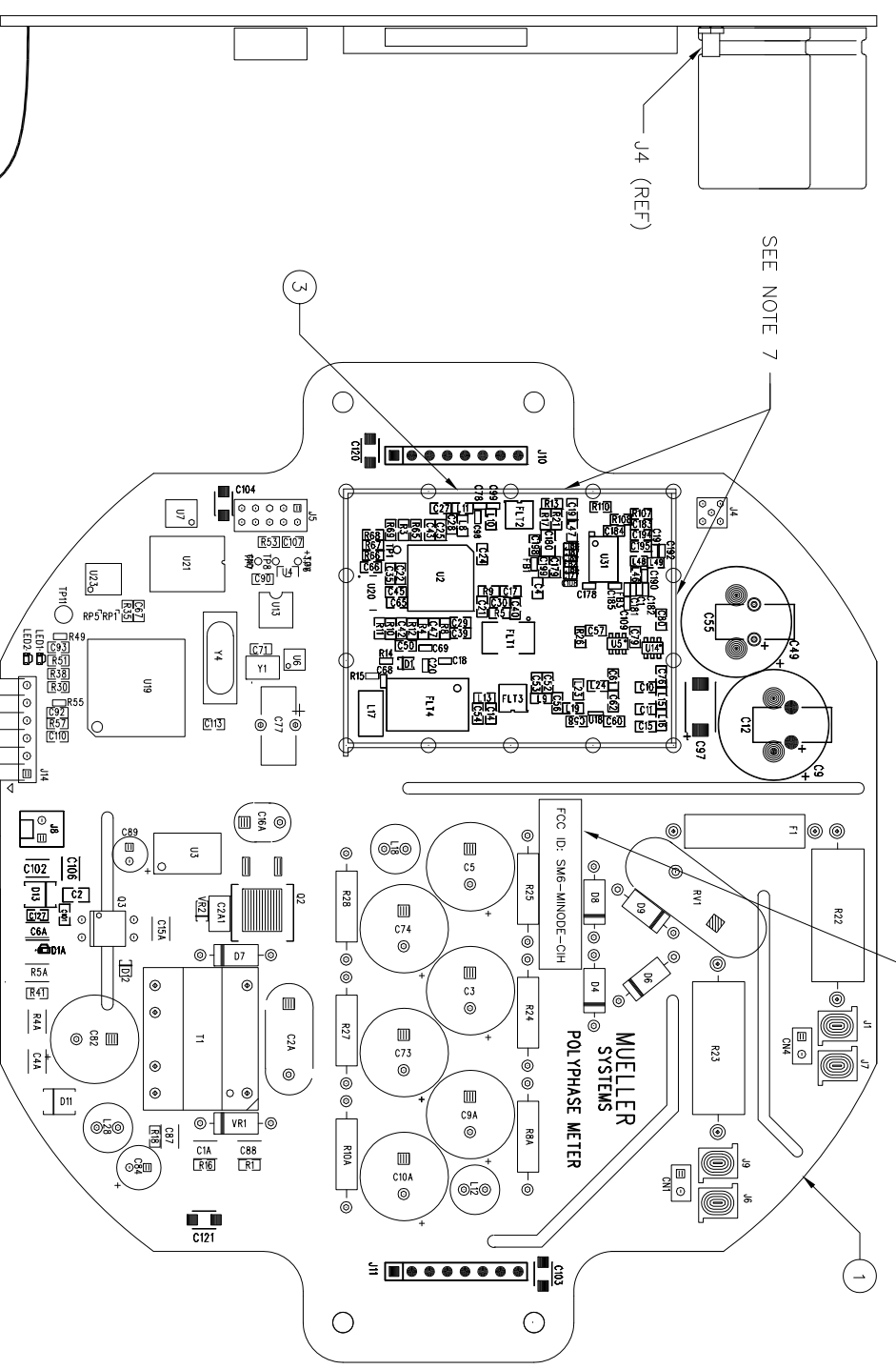
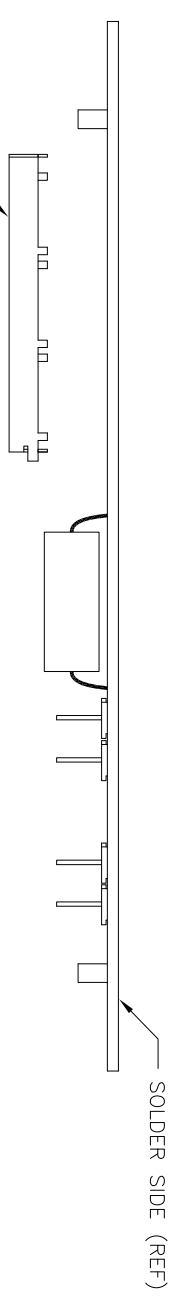


REVISIONS			
REV	DESCRIPTION	DATE	APPROVED
D00	RELEASED PER ECN100006	4/9/10	
D01	REVISED PER ECN100007	4/28/10	
D02	REVISED PER ECN100017	11/10/10	
D03	REVISED PER ECN11001	04/08/11	
E00	REVISED PER ECN11013	06/21/11	



COMPONENT SIDE

NOTES: UNLESS OTHERWISE SPECIFIED

- THIS IS A STATIC SENSITIVE ASSEMBLY- USE STATIC ELIMINATING MEASURES DURING ASSEMBLY AND HANDLING.
- MANUFACTURE TO IPC 610A CLASS 2 WORKMANSHIP STANDARDS.
- COMPONENT HEIGHT MUST NOT EXCEED .xxx ON SOLDER SIDE OF PWA.
- APPLY LABEL WITH THE 800- LEVEL PART NUMBER/REVISION AND SERIAL NUMBER/DATE CODE IN THE APPROX AREAS SHOWN ON SOLDER SIDE.
- ~~MASK MOUNTING HOLES FOR THE SHIELD FENCE~~ PRE-WAVE TO PREVENT SOLDER BUILD UP ON GROUND PADS.
- INSTALL FLEX CABLE (155-0011-001) INTO THE BOARD AT THE J14 LOCATION AND INSURE THAT THE PIN 1 ARROWS LINE UP.
SHIELD FENCE INSTALLATION (INSTALLED POST FMD):
- LINE UP THE TABS OF THE SHIELD FENCE (ITEM 3) WITH THE HOLES ON THE BOARD. APPLY A SUFFICIENT AMOUNT OF SOLDER ALL AROUND THE EXPOSED SURFACE UNDER THE SHIELD ON THE BOARD TO SECURE IN PLACE
- SEE SHEET 5 FOR THE SHIELD COVER INSTALLATION INSTRUCTIONS.
- APPLY LABEL (ITEM5) WITH THE FCC PART 15 ID NUMBER IN THE APPROX AREA SHOWN.
- APPLY LABEL (ITEM6) WITH THE PRODUCT NODE_ID IN THE APPROX AREA SHOWN ON TOP OF THE FLEX CABLE (J14). PLACE AS CLOSE TO THE END OF THE CABLE AS POSSIBLE - NEAR THE CONNECTOR. REFER TO REF DOC 130-0010-001 FOR PRINTING INSTRUCTIONS.

TABLE OF RESERVED SHEETS		
SHEET	DESCRIPTION	EXIST
1	PWA COMPONENT SIDE	YES
2	PWA SOLDER SIDE	YES
3	COMPONENT SIDE REWORK	YES
4	SOLDER SIDE REWORK	YES
5	SHIELD COVER INSTALLATION	YES

FOR PRODUCT STRUCTURE SEE 800-0065-004

MUELLER SYSTEMS CONFIDENTIAL
THIS DRAWING CONTAINS INFORMATION OF A CONFIDENTIAL AND/OR PROPRIETARY NATURE. WITHOUT THE WRITTEN PERMISSION OF MUELLER SYSTEMS, NO PART OF THIS DRAWING, NOR ANY OF THE INFORMATION CONTAINED HEREIN, MAY BE REPRODUCED, COPIED, OR DISCLOSED TO OR FOR THE BENEFIT OF ANY OTHER PERSON OR ENTITY WITHOUT THE EXPRESS WRITTEN CONSENT OF MUELLER SYSTEMS.

Mueller Systems

DWG ASSEMBLY
POLYPHASE METER BOARD

DWG file: 850-0065-004-1_E00

UNLESS OTHERWISE SPECIFIED, ALL DIMENSIONS ARE IN INCHES OR IN [MILLIMETERS]

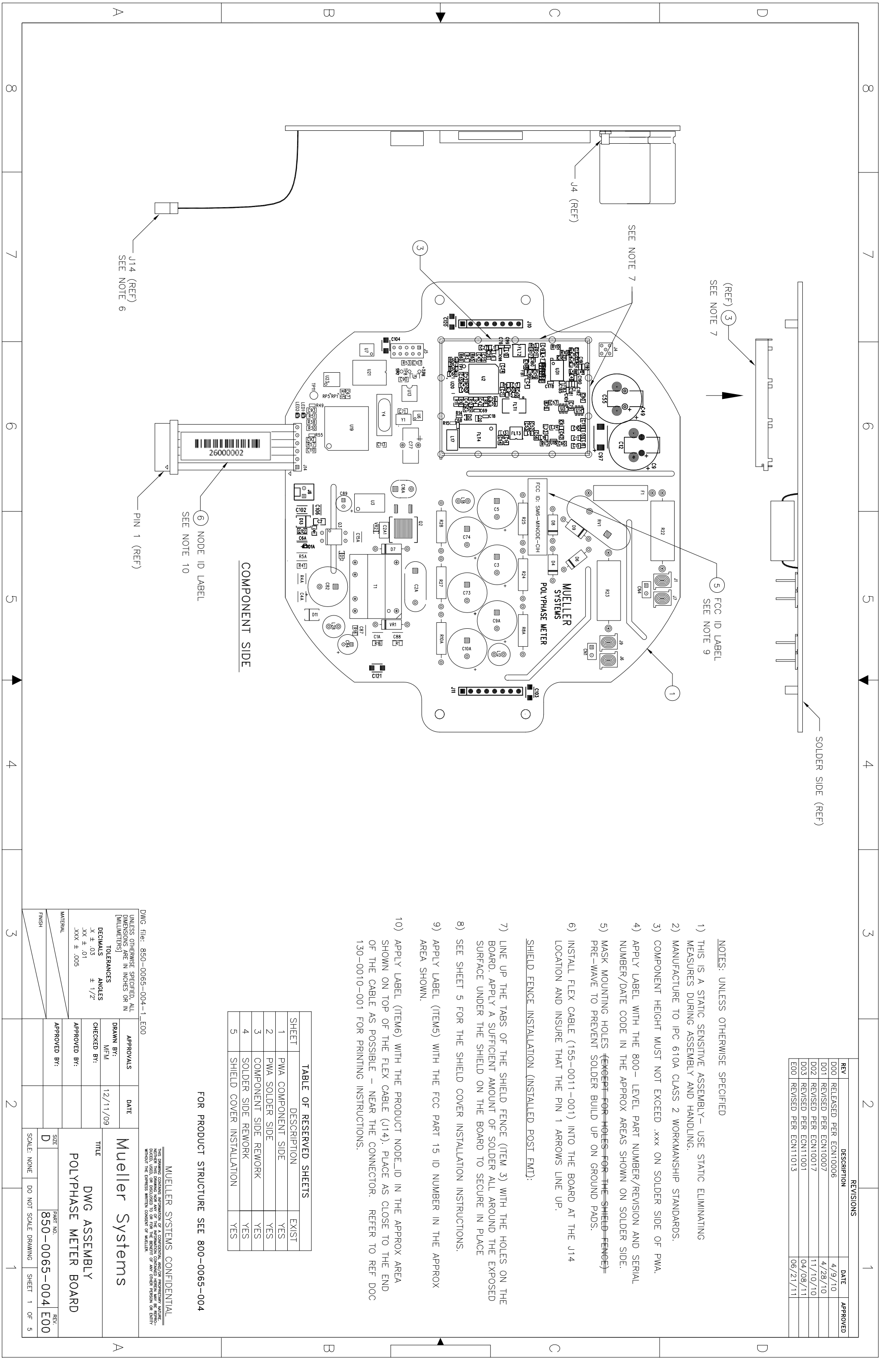
TOLERANCES

DECIMALS	ANGLES
X ± .03	± 1/2°
.XX ± .01	
.XXX ± .005	

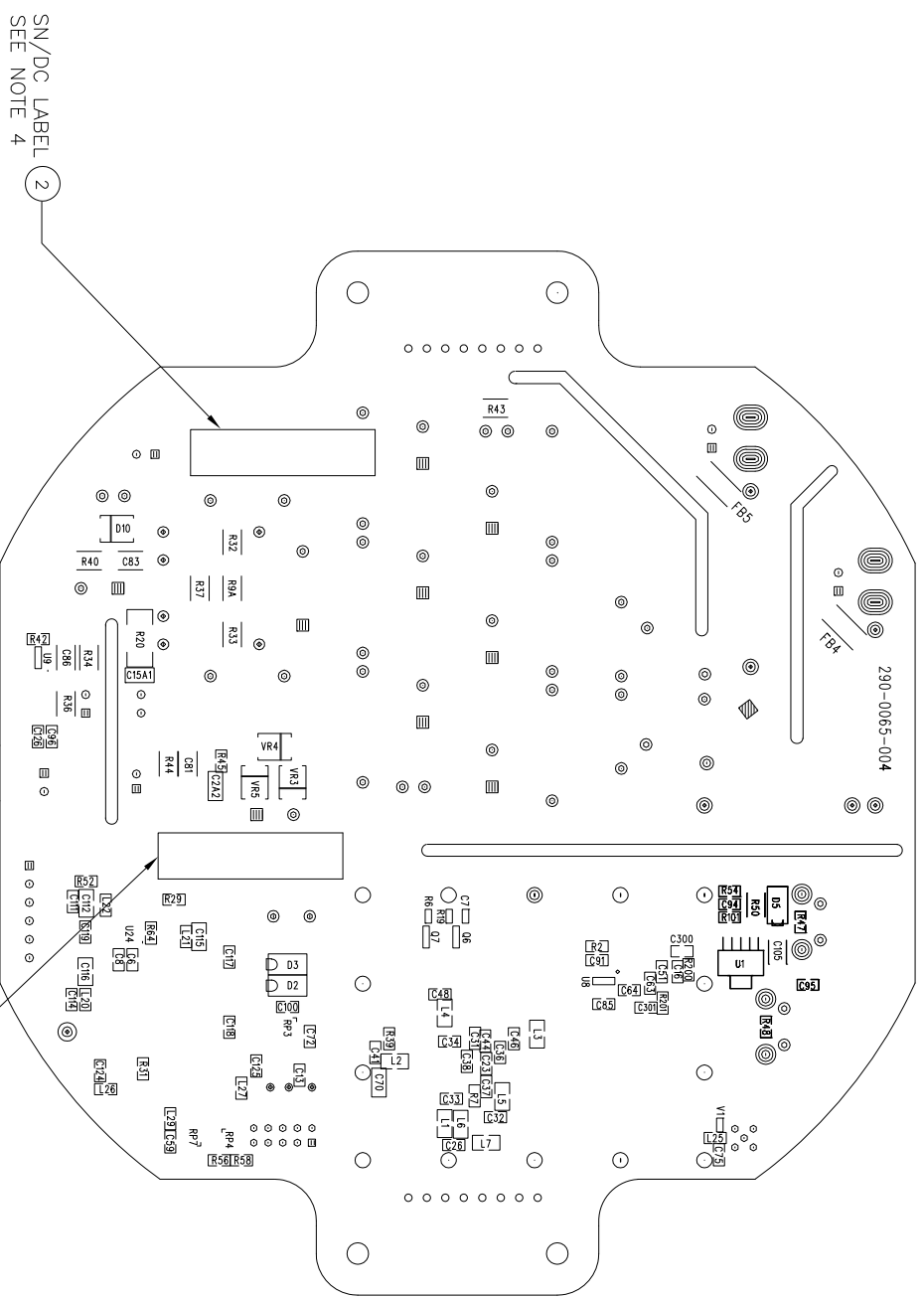
APPROVALS		DATE
DRAWN BY:	M/EM	12/11/09
CHECKED BY:		
APPROVED BY:		
APPROVED BY:		

SIZE	PART NO.	REV.
D	850-0065-004	E00

SCALE: NONE DO NOT SCALE DRAWING SHEET 1 OF 5



REVISIONS			
REV	DESCRIPTION	DATE	APPROVED
1	SEE SHEET 1 FOR REVISIONS		



SOLDER SIDE

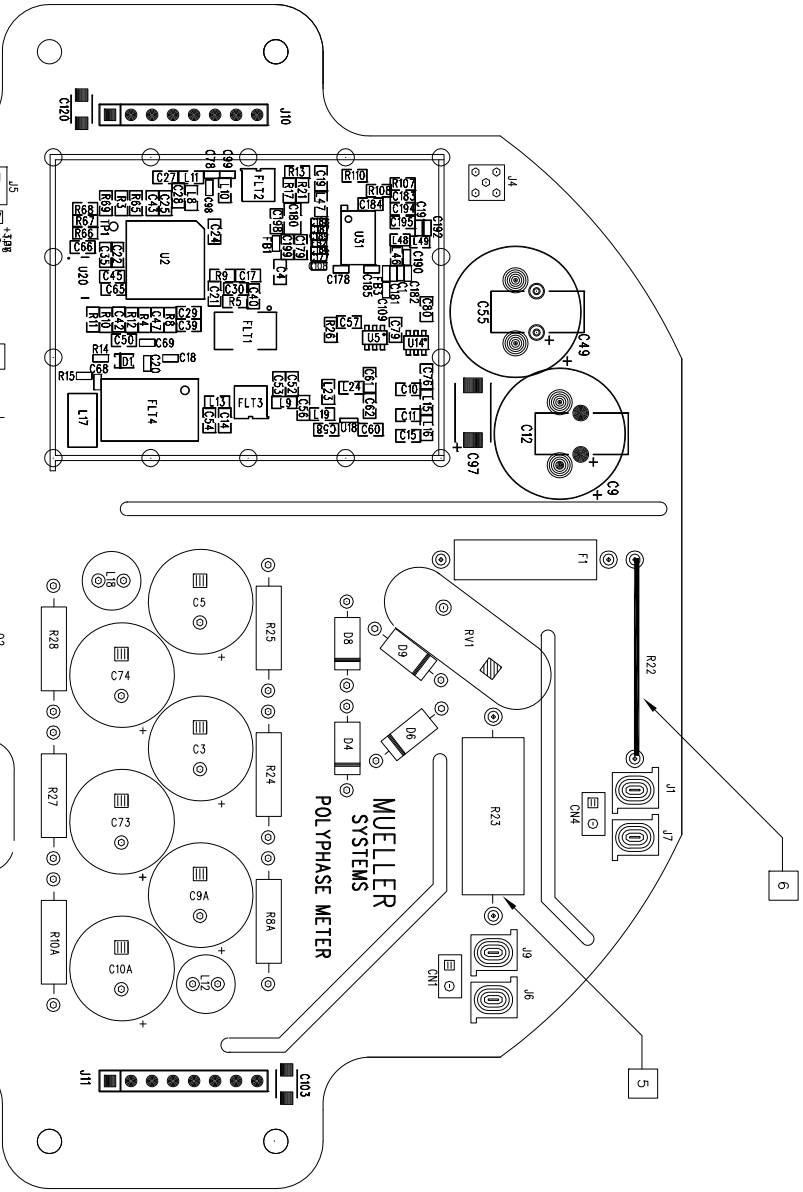
MUELLER CONFIDENTIAL
 THIS DRAWING CONTAINS INFORMATION OF A CONFIDENTIAL AND/OR PROPRIETARY NATURE. IT IS TO BE KEPT CONFIDENTIAL AND NOT TO BE DISCLOSED TO OR FOR THE BENEFIT OF ANY OTHER PERSON OR ENTITY WITHOUT THE EXPRESS WRITTEN CONSENT OF MUELLER.

DWG file: 850-0065-004-2_E00

SIZE	PART NO.	REV.
D	850-0065-004	E00

SCALE 1:1 DO NOT SCALE DRAWING SHEET 2 OF 5

REVISIONS			
REV	DESCRIPTION	DATE	APPROVED
1	SEE SHEET 1 FOR REVISION HISTORY		



COMPONENT SIDE

- 1 ALL JUMPERS ARE TO BE 30 AWG SOLID & GLUED DOWN ON COMPONENT SIDE OF PWA. IF REWORK IS LOCATED UNDER THE SHIELD, REMOVE THE COVER, PERFORM REQUIRED REWORK AND RE-INSTALL THE COVER.
- 2 MARK BOARD 'REV00' AFTER REWORK IS INCORPORATED.
- 3 REV002: IF NOT PREVIOUSLY INSTALLED, ADD R56 (300-0000-001).
- 4 REV002: IF PREVIOUSLY INSTALLED, REMOVE R58 (300-0000-001).
- 5 REV003: IF PREVIOUSLY INSTALLED, REMOVE R23 (310-0004-001) AND REPLACE WITH RES R23 (310-0007-001). THE NEW RES IS SLIGHTLY LARGER THAN THE OLD ONE SO THE LEADS NEED TO BE FORMED PRIOR TO INSTALLATION.
- 6 REV003: IF PREVIOUSLY INSTALLED, REMOVE R22 (310-0004-001) AND SOLDER A JUMPER WIRE (22AWG) ACROSS HOLES AS SHOWN

REV	DESCRIPTION	DATE	APPROVED
1	SEE SHEET 1 FOR REVISION HISTORY		

REV	DESCRIPTION	DATE	APPROVED
1	SEE SHEET 1 FOR REVISION HISTORY		

REV	DESCRIPTION	DATE	APPROVED
1	SEE SHEET 1 FOR REVISION HISTORY		

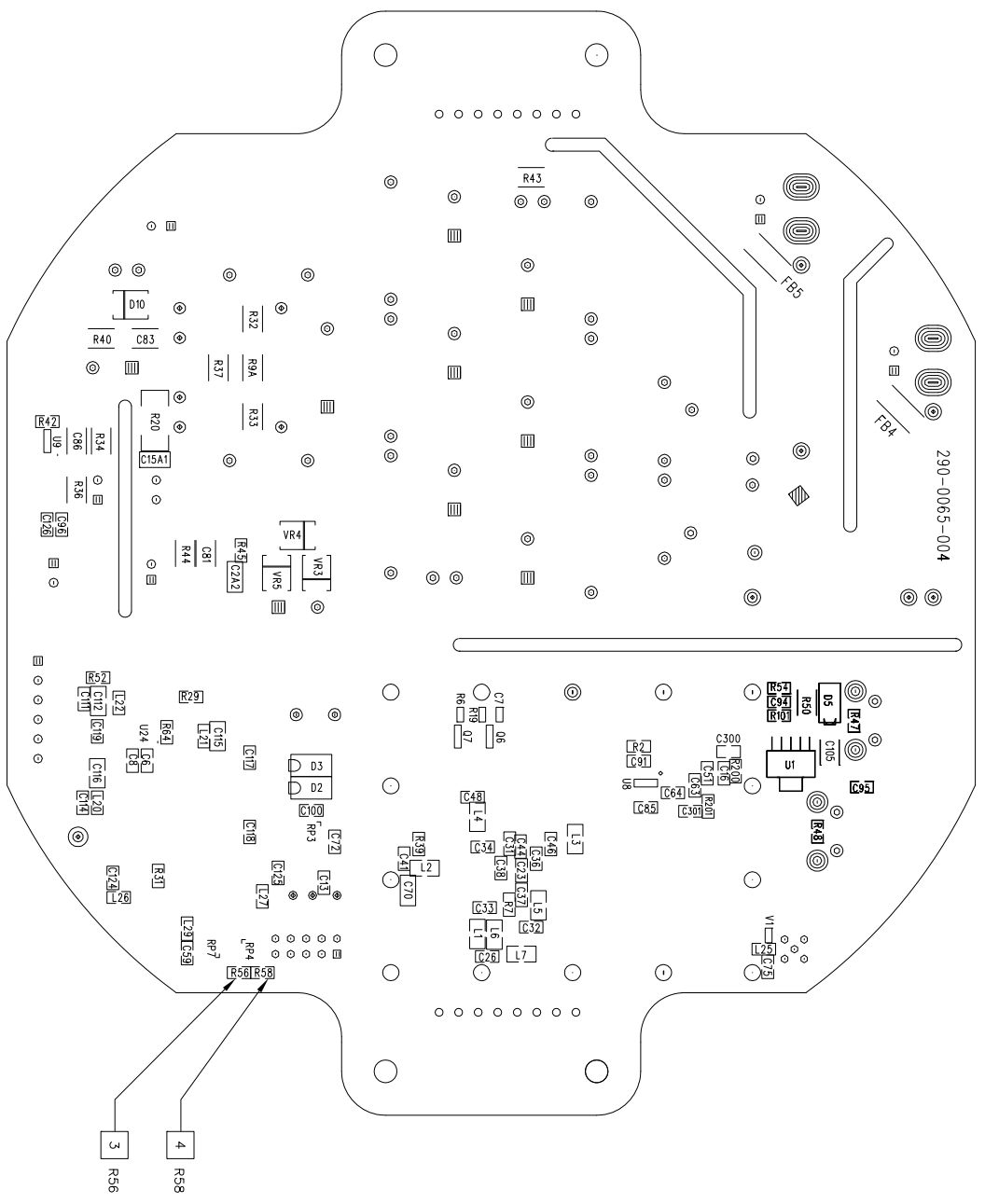
REV	DESCRIPTION	DATE	APPROVED
1	SEE SHEET 1 FOR REVISION HISTORY		

- NOTES
 - CUT
 - JUMPERS
- REWORK LEGEND

MUELLER CONFIDENTIAL
 THIS DRAWING CONTAINS INFORMATION OF A CONFIDENTIAL AND/OR PROPRIETARY NATURE. NEITHER THIS DRAWING NOR ANY OF THE INFORMATION CONTAINED HEREIN MAY BE REPRODUCED OR TRANSMITTED IN ANY FORM OR BY ANY MEANS, ELECTRONIC OR MECHANICAL, WITHOUT THE EXPRESS WRITTEN CONSENT OF MUELLER.

CAD file: 850-0065-004-3_E00
 SIZE D PART NO. 850-0065-004 E00
 SCALE 1/1 DO NOT SCALE DRAWING SHEET 3 OF 5

REVISIONS		
REV	DESCRIPTION	DATE
1	SEE SHEET 1 FOR REVISION HISTORY	



SOLDER SIDE

10	9	8	7	6	5	4	3	2	1
FROM									
TO									
REV									

20	19	18	17	16	15	14	13	12	11
FROM									
TO									
REV									

10	9	8	7	6	5	4	3	2	1
FROM									
TO									
REV									

20	19	18	17	16	15	14	13	12	11
FROM									
TO									
REV									

- NOTES
 - CUT
 - JUMPERS
- REWORK LEGEND

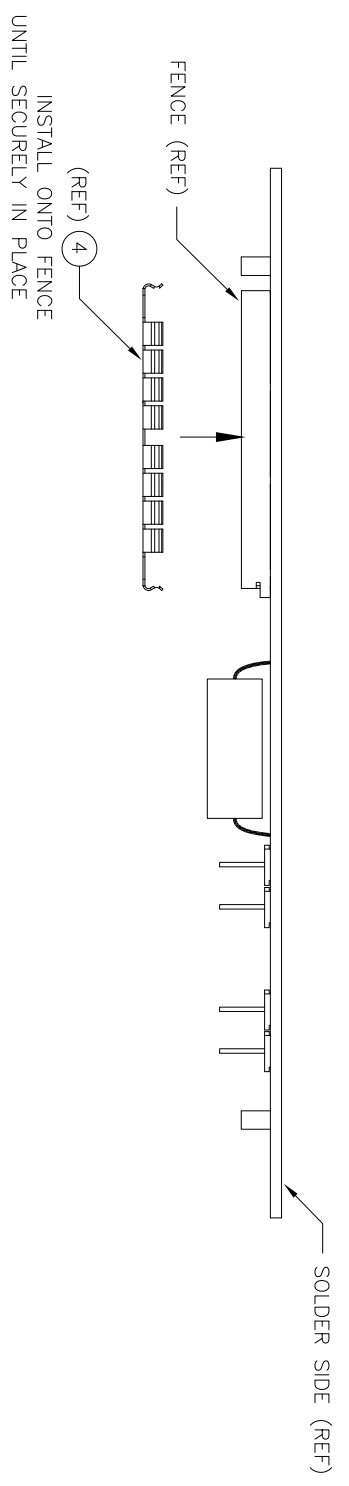
MUELLER CONFIDENTIAL

THIS DRAWING CONTAINS INFORMATION OF A CONFIDENTIAL AND/OR PROPRIETARY NATURE. NEITHER THIS DRAWING NOR ANY OF THE INFORMATION CONTAINED HEREIN MAY BE REPRODUCED OR TRANSMITTED IN ANY FORM OR BY ANY MEANS, ELECTRONIC OR MECHANICAL, WITHOUT THE EXPRESS WRITTEN CONSENT OF MUELLER.

CAD file: 850-0065-004-4_E00

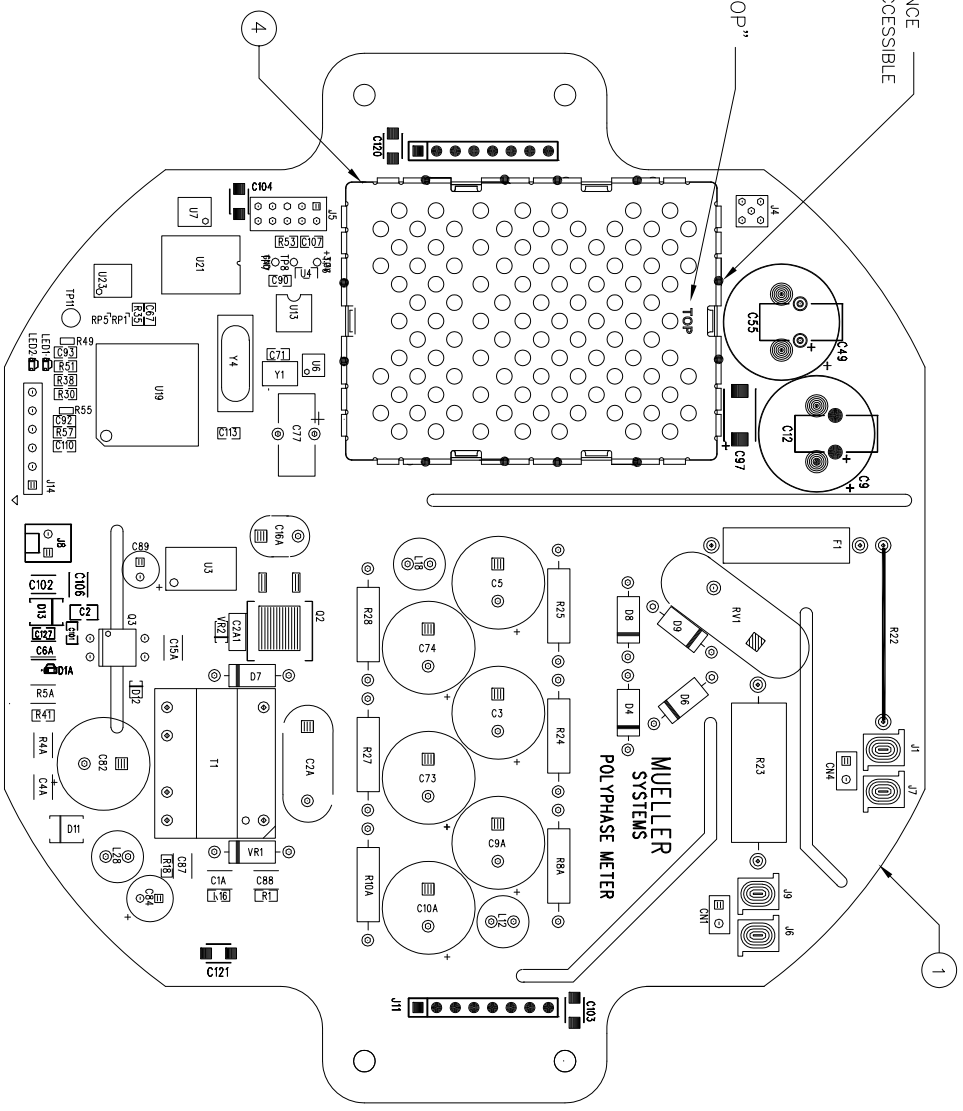
SIZE	PART NO.	REV.
D	850-0065-004	E00
SCALE 1/1	DO NOT SCALE DRAWING	SHEET 4 OF 5

REVISIONS			
REV	DESCRIPTION	DATE	APPROVED
SEE SHEET 1	FOR REVISIONS		



ONCE SHIELD IS INSERTED INTO THE FENCE
TACK SOLDER DOWN 2 PLS ON EACH ACCESSIBLE
SIDE AS SHOWN PER "●" SYMBOL.

INSTALL COVERS SO THAT "TOP"
IS ORIENTATED AS SHOWN



COMPONENT SIDE

SHIELD COVER INSTALLATION

MUELLER SYSTEMS CONFIDENTIAL
THIS DRAWING CONTAINS INFORMATION OF A CONFIDENTIAL AND/OR PROPRIETARY NATURE.
NEITHER THIS DRAWING NOR ANY OF THE INFORMATION CONTAINED HEREIN MAY BE REPRODUCED,
COPIED, OR TRANSMITTED IN ANY FORM OR BY ANY MEANS, ELECTRONIC OR MECHANICAL,
WITHOUT THE EXPRESS WRITTEN CONSENT OF MUELLER.

DWG file: 850-0065-004-5_E00

SIZE	PART NO.	REV.
D	850-0065-004	E00

SCALE: NONE DO NOT SCALE DRAWING SHEET 5 OF 5