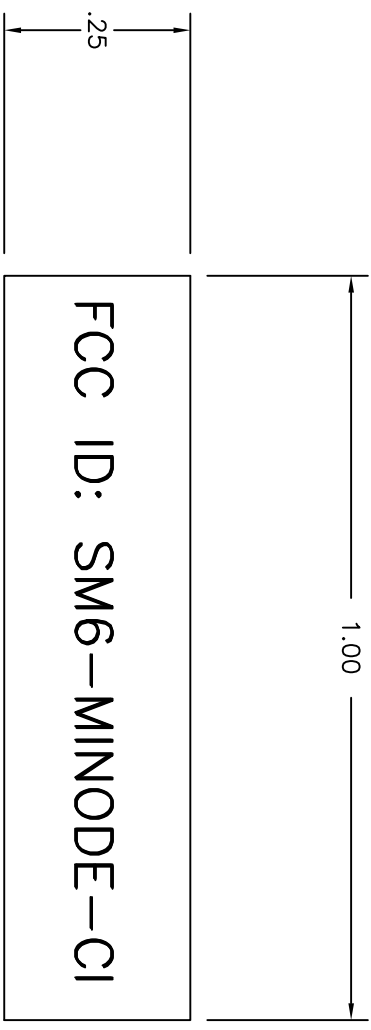


8 7 6 5 4 3 2 1

REVISIONS			
REV	DESCRIPTION	DATE	APPROVED
A00	ORIGINATED	10/08/09	



- NOTES: UNLESS OTHERWISE SPECIFIED**
- 1) Label stock: 121-0004-001 or equivalent Polyester Stock
 - 2) Font: Arial / Size: as applicable / Color: BLACK
 - 3) Dimensions: 1.00 wide by .25 high

DWG file: 130-0019-001_A00

UNLESS OTHERWISE SPECIFIED, ALL DIMENSIONS ARE IN INCHES OR IN [MILLIMETERS]

TOLERANCES
 DECIMALS X ± .03 ANGLES ± 1/2°
 .XX ± .01
 .XXX ± .005

MATERIAL
 FINISH

APPROVALS
 DRAWN BY: MFM
 CHECKED BY:
 APPROVED BY:

DATE
 10/08/09

TITLE
 FCC PART 15 ID LABEL
 MINODE-CI MODULE

SIZE
 D
SCALE 1:1
DO NOT SCALE DRAWING
SHEET 1 OF 1

MUELLER CONFIDENTIAL

THIS DRAWING CONTAINS INFORMATION OF A CONFIDENTIAL AND/OR PROPRIETARY NATURE. IT IS NOT TO BE REPRODUCED, COPIED, DISCLOSED, USED, OR DISSEMINATED IN ANY MANNER WITHOUT THE EXPRESS WRITTEN CONSENT OF MUELLER.

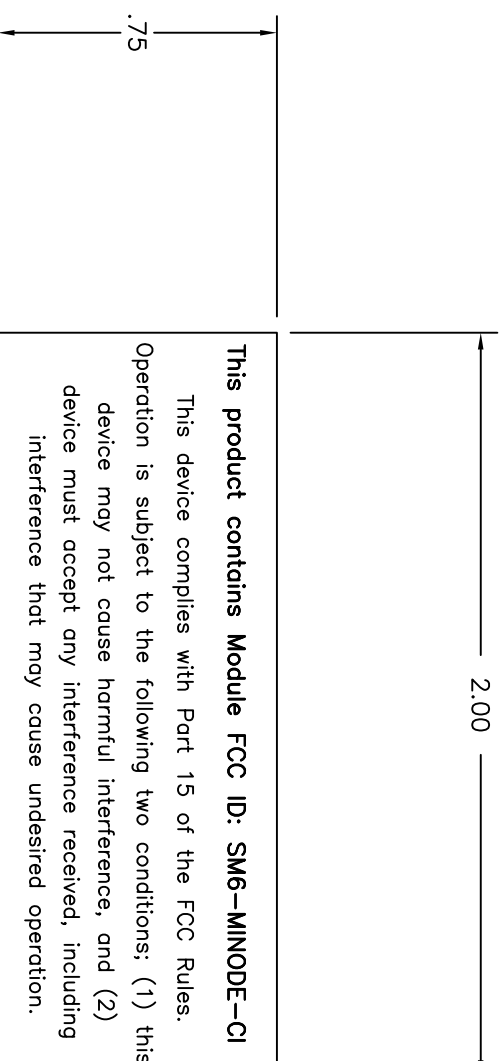
8 7 6 5 4 3 2 1

REVISIONS			
REV	DESCRIPTION	DATE	APPROVED
A00	ORIGINATED	10/08/09	

8 7 6 5 4 3 2 1

NOTES: UNLESS OTHERWISE SPECIFIED

- 1) MATERIAL: 2 mil Gloss White Polyester (Thermal Transfer) base w/
2 mil Acrylic Adhesive UL recognized and CA certified for outdoor use that will not rub off under a 50% alcohol/water solution or equivalent process. Able to withstand outside exposure to -40C, rain and direct sunlight
- 2) Thermal Transfer printing: Resin ribbon or equivalent, Black
- 3) Font: Arial / Size: 8pt
- 4) Dimensions: 2.00 wide by .75 high



DWG file: 130-0020-001_A00

UNLESS OTHERWISE SPECIFIED, ALL DIMENSIONS ARE IN INCHES OR IN [MILLIMETERS]

TOLERANCES	
DECIMALS	ANGLES
X ± .03	± 1/2°
.XX ± .01	
.XXX ± .005	

APPROVALS		DATE
DRAWN BY:	MFM	10/08/09
CHECKED BY:		
APPROVED BY:		
APPROVED BY:		

MUELLER CONFIDENTIAL

THIS DRAWING CONTAINS INFORMATION OF A CONFIDENTIAL AND/OR PROPRIETARY NATURE. IT IS TO BE KEPT CONFIDENTIAL AND NOT DISCLOSED, REPRODUCED, COPIED, USED, OR DISCLOSED TO OR FOR THE BENEFIT OF ANY OTHER PERSON OR ENTITY WITHOUT THE EXPRESS WRITTEN CONSENT OF MUELLER.

Mueller Systems

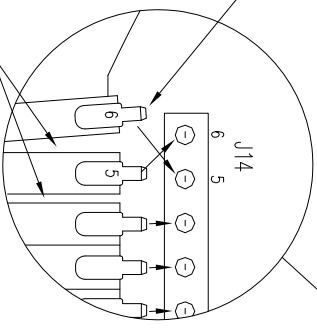
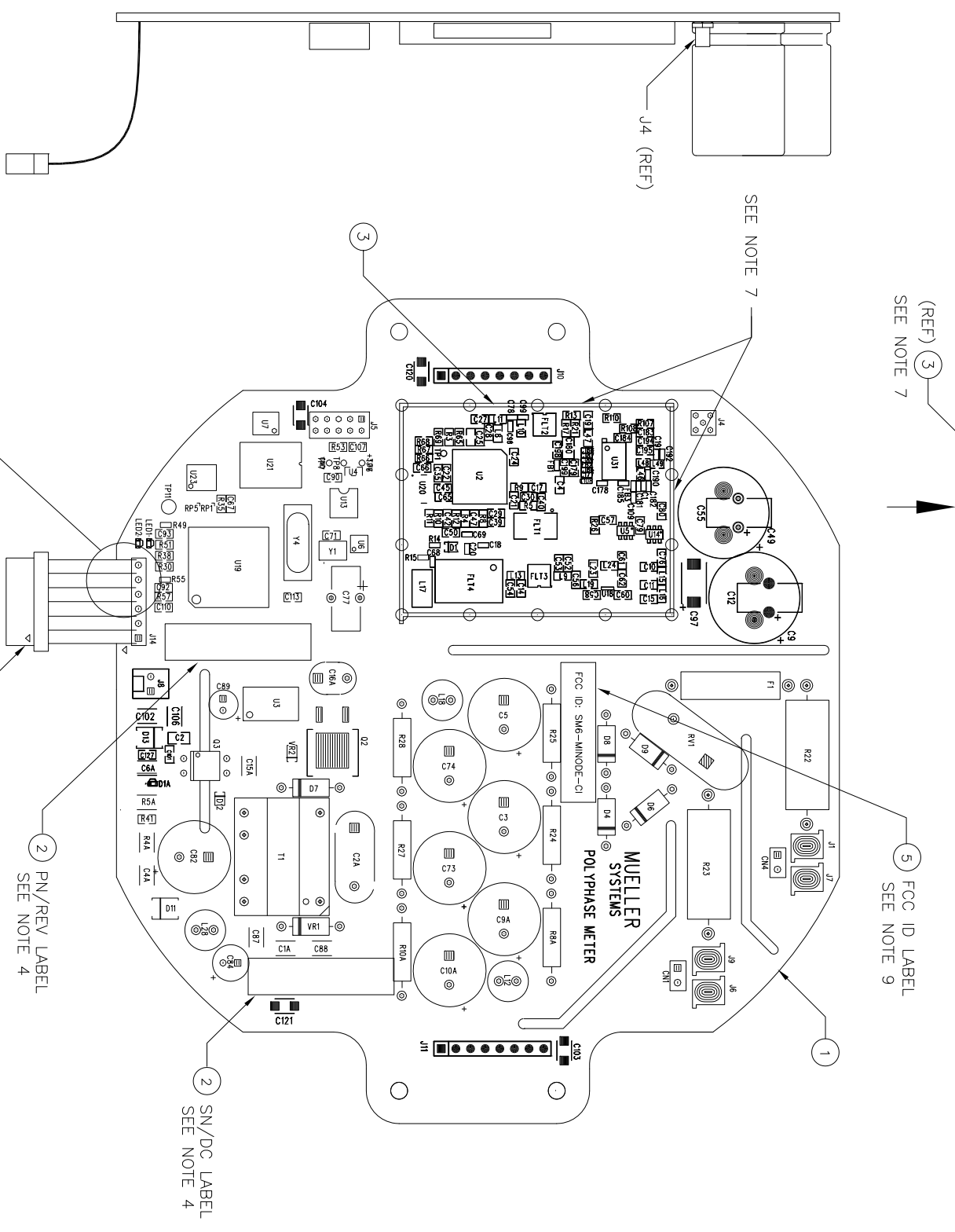
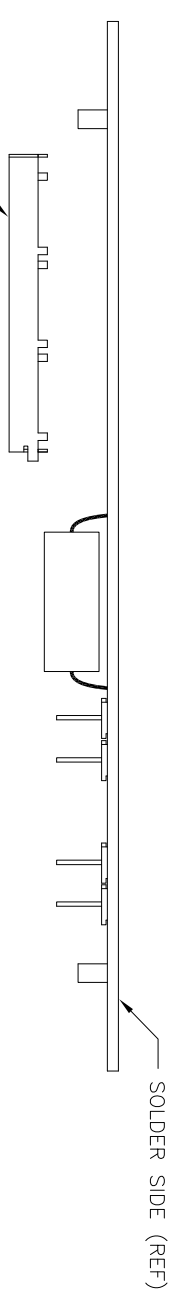
TITLE
**FCC PART 15 ID LABEL
SmartMeter-CI**

SIZE	PART NO.	REV.
D	130-0020-001	A00

SCALE 1:1 DO NOT SCALE DRAWING SHEET 1 OF 1

8 7 6 5 4 3 2 1

REVISIONS			1
REV	DESCRIPTION	DATE	APPROVED
A00	RELEASED PER EON0900006	04/22/09	
B00	RELEASED PER EON0900013	07/15/09	
B01	REVISED PER EON0900018	09/05/09	
B02	REVISED PER EON0900020	11/05/09	



COMPONENT SIDE

NOTES: UNLESS OTHERWISE SPECIFIED

- 1) THIS IS A STATIC SENSITIVE ASSEMBLY- USE STATIC ELIMINATING MEASURES DURING ASSEMBLY AND HANDLING.
- 2) MANUFACTURE TO IPC 610A CLASS 2 WORKMANSHIP STANDARDS.
- 3) COMPONENT HEIGHT MUST NOT EXCEED .xxx ON SOLDER SIDE OF PWA.
- 4) APPLY LABEL WITH THE 800- LEVEL PART NUMBER/REVISION AND SERIAL NUMBER/DATE CODE IN THE APPROX AREAS SHOWN.
- 5) MASK MOUNTING HOLES ~~EXCEPT FOR HOLES FOR THE SHIELD FENCE~~ PRE-WAVE TO PREVENT SOLDER BUILD UP ON GROUND PADS.
- 6) INSTALL FLEX CABLE (155-0011-001) INTO THE BOARD AT THE J14 LOCATION AND INSURE THAT THE PIN 1 ARROWS LINE UP. SEPARATE PINS 5 & 6 OF THE FLEX CABLE AS SHOWN. INSERT PIN 5 OF THE FLEX CABLE INTO J14-6 AND PIN 6 OF THE FLEX CABLE INTO J14-5
- 7) LINE UP THE TABS OF THE SHIELD FENCE (ITEM 3) WITH THE HOLES ON THE BOARD. APPLY A SUFFICIENT AMOUNT OF SOLDER ALL AROUND THE EXPOSED SURFACE UNDER THE SHIELD ON THE BOARD TO SECURE IN PLACE
- 8) SEE SHEET 5 FOR THE SHIELD COVER INSTALLATION INSTRUCTIONS.
- 9) APPLY LABEL (ITEM5) WITH THE FCC PART 15 ID NUMBER IN THE APPROX AREA SHOWN.

SHIELD FENCE INSTALLATION (INSTALLED POST FMT):

TABLE OF RESERVED SHEETS		
SHEET	DESCRIPTION	EXIST
1	PWA COMPONENT SIDE	YES
2	PWA SOLDER SIDE	YES
3	COMPONENT SIDE REWORK	YES
4	SOLDER SIDE REWORK	YES
5	SHIELD COVER INSTALLATION	YES

FOR PRODUCT STRUCTURE SEE 800-0065-002

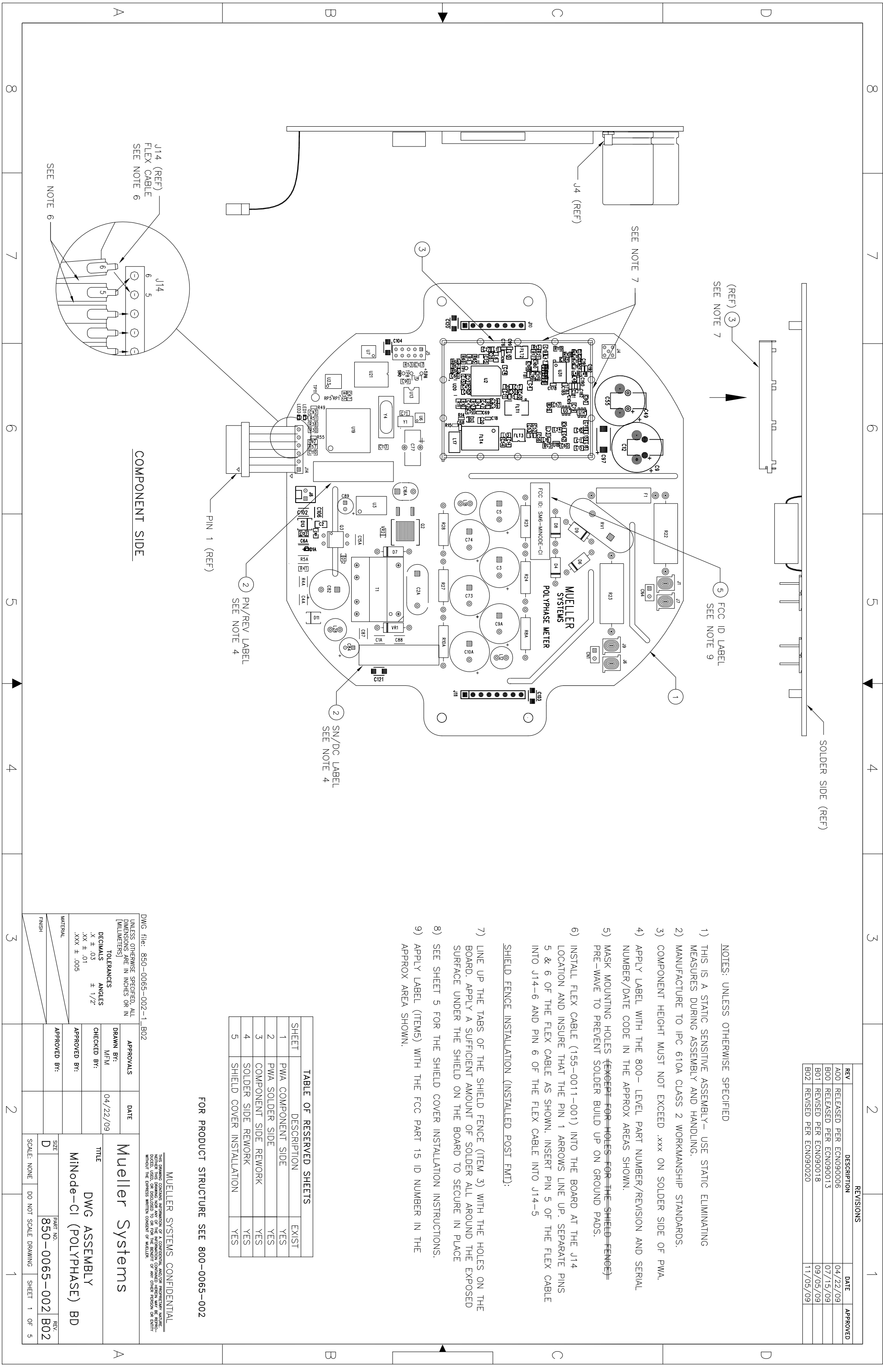
MUELLER SYSTEMS CONFIDENTIAL

THIS DRAWING CONTAINS INFORMATION OF A CONFIDENTIAL AND/OR PROPRIETARY NATURE. WITHOUT THIS DRAWING, NOR ANY OF THE INFORMATION CONTAINED HEREIN, MAY BE REPRODUCED, COPIED, OR DISCLOSED TO OR FOR THE BENEFIT OF ANY OTHER PERSON OR ENTITY WITHOUT THE EXPRESS WRITTEN CONSENT OF MUELLER SYSTEMS.

Mueller Systems

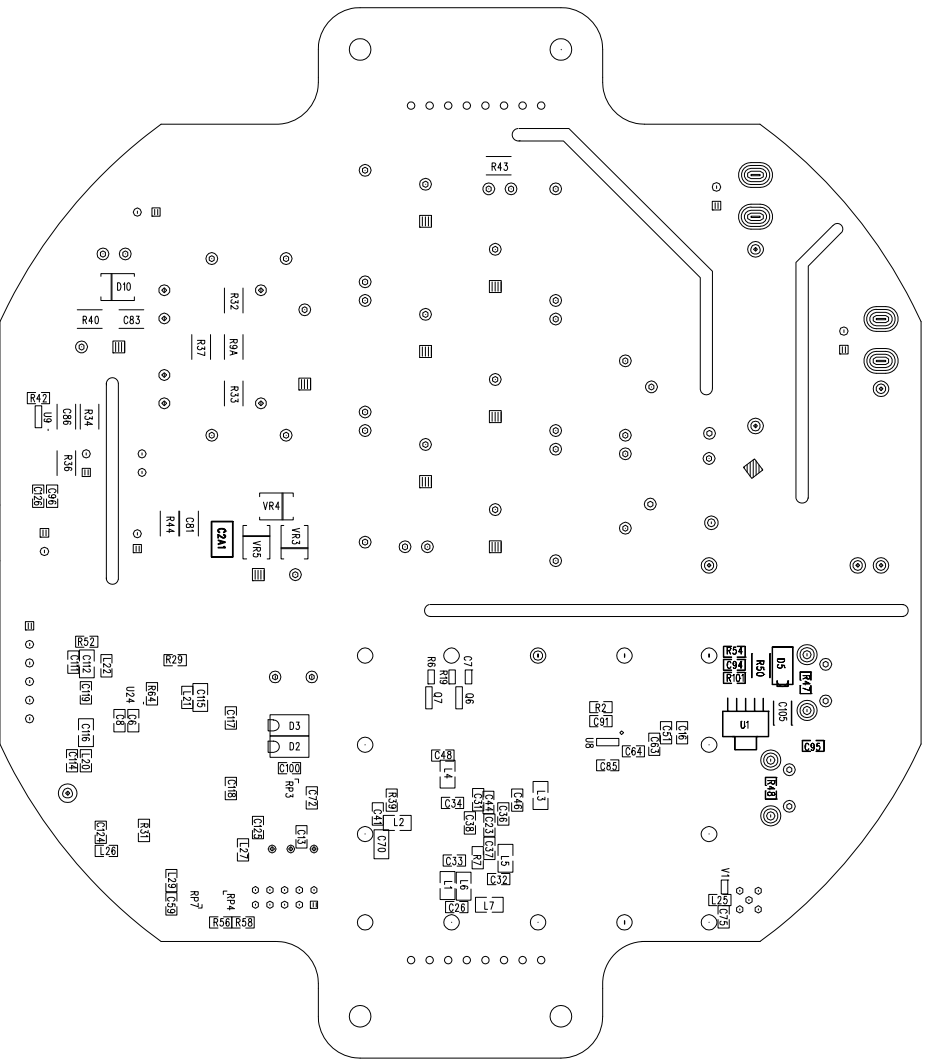
DWG ASSEMBLY
MiNode-CI (POLYPHASE) BD

APPROVALS		DATE	TITLE	
DRAWN BY:	M/TM	04/22/09	DWG ASSEMBLY	
CHECKED BY:			MiNode-CI (POLYPHASE) BD	
APPROVED BY:				
APPROVED BY:				
MATERIAL		SIZE	PART NO.	REV.
FINISH		D	850-0065-002	B02
DWG file: 850-0065-002-1_B02		SCALE: NONE	DO NOT SCALE DRAWING	SHEET 1 OF 5



8 7 6 5 4 3 2 1

REVISIONS		
REV	DESCRIPTION	DATE
1	SEE SHEET 1 FOR REVISIONS	



SOLDER SIDE

MUELLER CONFIDENTIAL
 THIS DRAWING CONTAINS INFORMATION OF A CONFIDENTIAL AND/OR PROPRIETARY NATURE. IT IS NOT TO BE REPRODUCED, COPIED, DISCLOSED, OR USED IN ANY MANNER WITHOUT THE EXPRESS WRITTEN CONSENT OF MUELLER.

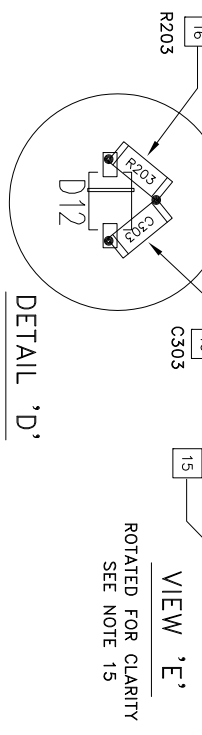
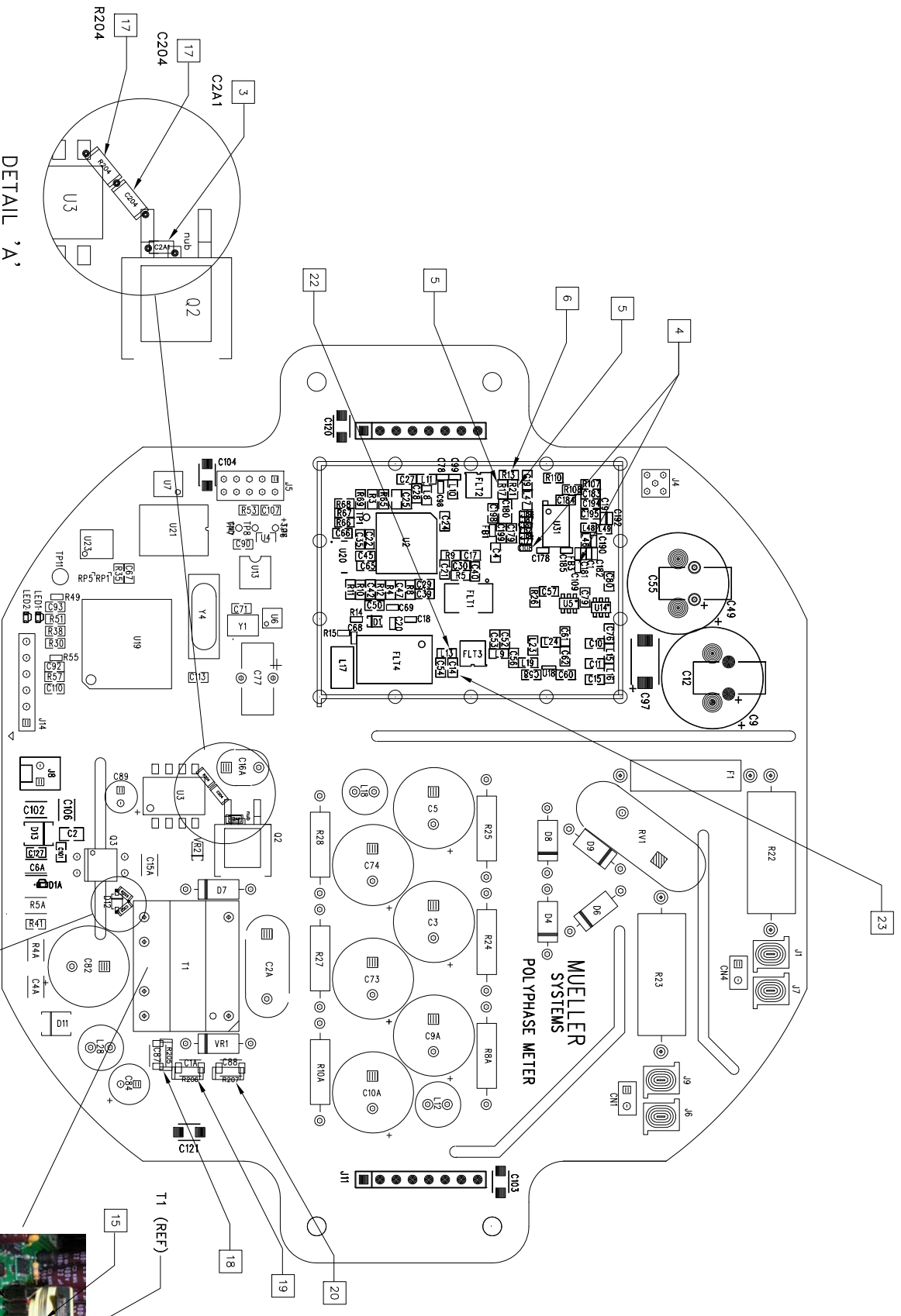
DWG file: 850-0065-002-2_B02

SIZE	PART NO.	REV.
D	850-0065-002	B02

SCALE 1:1 DO NOT SCALE DRAWING SHEET 2 OF 5

8 7 6 5 4 3 2 1

REVISIONS		
REV	DESCRIPTION	DATE
1	SEE SHEET 1 FOR REVISION HISTORY	



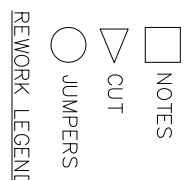
COMPONENT SIDE

DETAIL 'D'

VIEW 'E'
ROTATED FOR CLARITY
SEE NOTE 15

- 1 ALL JUMPERS ARE TO BE 30 AWG SOLDER & GLUED DOWN ON COMPONENT SIDE OF PWA. IF REWORK IS LOCATED UNDER THE SHIELD, REMOVE THE COVER, PERFORM REQUIRED REWORK AND RE-INSTALL THE COVER.
- 2 MARK BOARD 'REWORK' AFTER REWORK IS INCORPORATED.
- 3 REWORK: IF PREVIOUSLY INSTALLED, REMOVE CAP C2A1 (350-0130-001) FROM THE SOLDER SIDE LOCATION AND PLACE ONTO THE LEADS OF Q2 AS SHOWN IN DETAIL 'A'. SOLDER ONE SIDE OF THE CAP TO Q2-3 (LEG) AND THE OTHER SIDE TO THE 'NUB' OF THE MIDDLE PAD ON Q2.
- 4 REWORK: IF NOT PREVIOUSLY INSTALLED, INSTALL C108 & C109 (350-0099-001).
- 5 REWORK: IF NOT PREVIOUSLY INSTALLED, INSTALL R21 & R17 (300-0113-001).
- 6 REWORK: IF PREVIOUSLY INSTALLED, REMOVE R13 (300-0000-001) AND REPLACE WITH RES (300-0171-001).
- 7 REWORK: IF PREVIOUSLY INSTALLED, REMOVE C16 & C51 (350-0022-001) AND REPLACE WITH CAPS (350-0076-001).
- 8 REWORK: SCRAPE AWAY THE MASK ON THE TRACE & VIA COMING FROM C16-2. MAKE CUT #1 AND INSTALL R200 (300-0006-001) DIRECTLY ON THE TRACE & PAD OF C16. SOLDER DOWN IN PLACE AS SHOWN IN DETAIL 'B' (SHT 4).
- 9 REWORK: SCRAPE AWAY THE MASK ON THE GROUND VIA AND INSTALL C300 (350-0028-001) DIRECTLY ON THE VIA COMING FROM C16-2 & THE GND VIA. SOLDER DOWN IN PLACE AS SHOWN IN DETAIL 'B' (SHT 4).
- 10 REWORK: SCRAPE AWAY THE MASK ON THE TRACE & VIA COMING FROM C51-1. MAKE CUT #2 AND INSTALL R201 (300-0006-001) DIRECTLY ON THE TRACE & PAD OF C51. SOLDER DOWN IN PLACE AS SHOWN IN DETAIL 'B' (SHT 4).
- 11 REWORK: SCRAPE AWAY THE MASK ON THE GROUND VIA AND INSTALL C301 (350-0028-001) DIRECTLY ON THE VIA COMING FROM C51-1 & THE GND VIA. SOLDER DOWN IN PLACE AS SHOWN IN DETAIL 'B' (SHT 4).
- 12 REWORK: SCRAPE AWAY THE MASK ON THE TRACE & VIA COMING FROM L7-1 AND ON THE GND VIA THAT AREA. INSTALL C302 (350-0016-001) WITH ONE SIDE ON THE VIA FROM L7-1 & THE OTHER SIDE ON THE GND VIA. SOLDER DOWN IN PLACE AS SHOWN IN DETAIL 'C' (SHT 4).

REWORK NOTES CONTINUED ON SHEET 4



REWORK LEGEND

MUELLER CONFIDENTIAL

THIS DRAWING CONTAINS INFORMATION OF A CONFIDENTIAL AND/OR PROPRIETARY NATURE. NEITHER THIS DRAWING NOR ANY OF THE INFORMATION CONTAINED HEREIN MAY BE REPRODUCED OR TRANSMITTED IN ANY FORM OR BY ANY MEANS, WITHOUT THE EXPRESS WRITTEN CONSENT OF MUELLER.

CAD file: 850-0065-002-3_B02

SIZE D BOARD NO. 850-0065-002 B02 REV.

SCALE 1/1 DO NOT SCALE DRAWING SHEET 3 OF 5

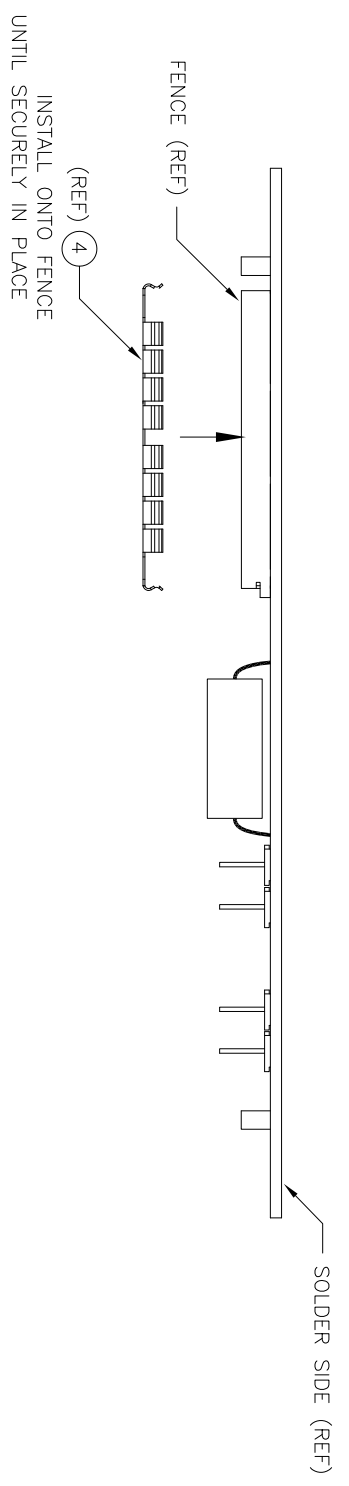
REV	DESCRIPTION	DATE
1	FROM	
2	TO	
3	TO	
4	TO	
5	TO	
6	TO	
7	TO	
8	TO	
9	TO	
10	TO	

REV	DESCRIPTION	DATE
1	FROM	
2	TO	
3	TO	
4	TO	
5	TO	
6	TO	
7	TO	
8	TO	
9	TO	
10	TO	
11	TO	
12	TO	
13	TO	
14	TO	
15	TO	
16	TO	
17	TO	
18	TO	
19	TO	
20	TO	

REV	DESCRIPTION	DATE
1	FROM	
2	TO	
3	TO	
4	TO	
5	TO	
6	TO	
7	TO	
8	TO	
9	TO	
10	TO	
11	TO	
12	TO	
13	TO	
14	TO	
15	TO	
16	TO	
17	TO	
18	TO	
19	TO	
20	TO	

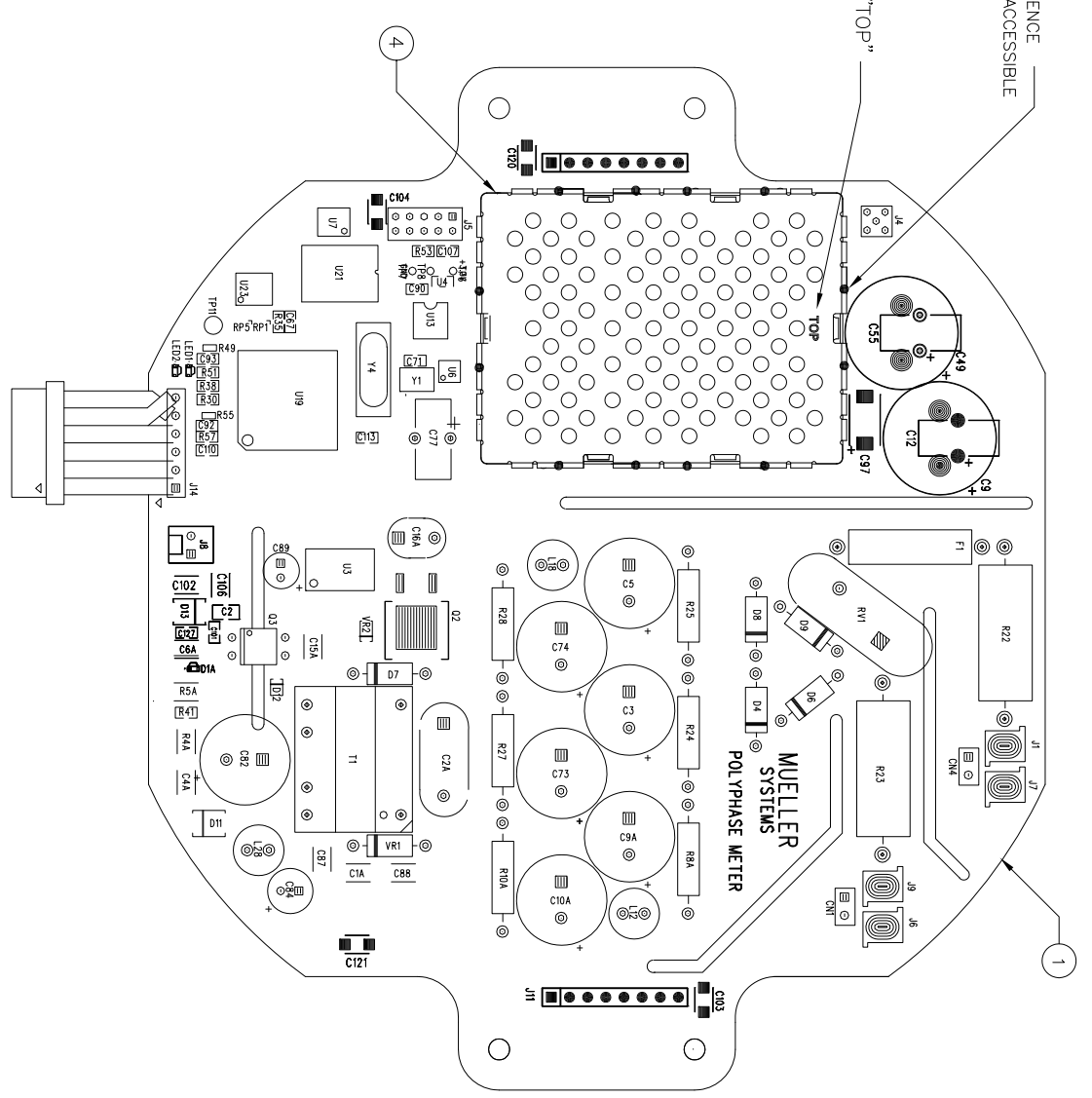
REV	DESCRIPTION	DATE
1	FROM	
2	TO	
3	TO	
4	TO	
5	TO	
6	TO	
7	TO	
8	TO	
9	TO	
10	TO	
11	TO	
12	TO	
13	TO	
14	TO	
15	TO	
16	TO	
17	TO	
18	TO	
19	TO	
20	TO	

REVISIONS			
REV	DESCRIPTION	DATE	APPROVED
A00	RELEASED PER EON090006	04/22/09	
B00	RELEASED PER EON090013	07/15/09	



ONCE SHIELD IS INSERTED INTO THE FENCE
TACK SOLDER DOWN 2 PLS ON EACH ACCESSIBLE
SIDE AS SHOWN PER "●" SYMBOL.

INSTALL COVERS SO THAT "TOP"
IS ORIENTATED AS SHOWN



COMPONENT SIDE

SHIELD COVER INSTALLATION

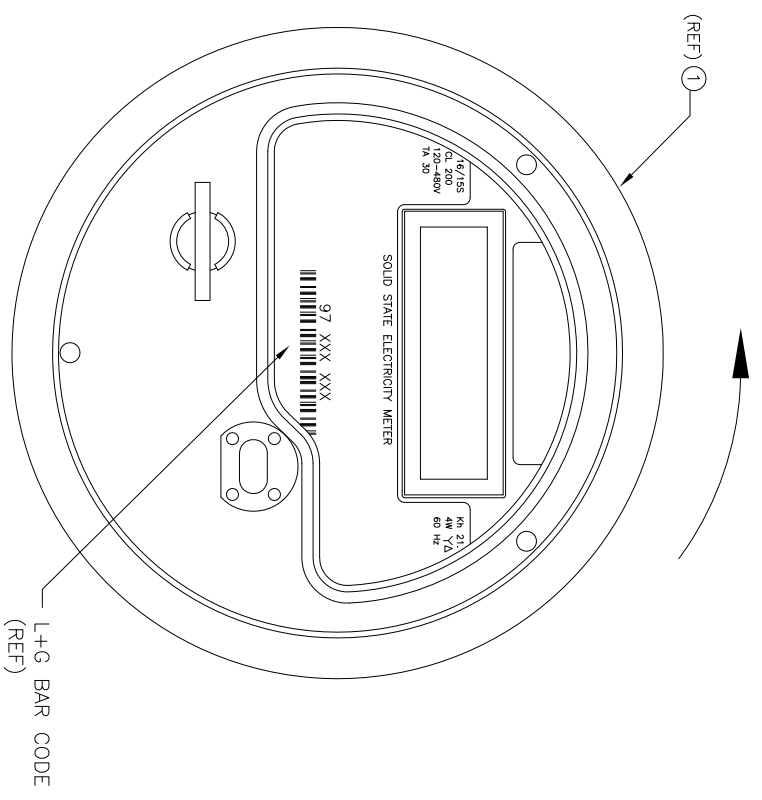
MUELLER SYSTEMS CONFIDENTIAL
THIS DRAWING CONTAINS INFORMATION OF A CONFIDENTIAL AND/OR PROPRIETARY NATURE.
NEITHER THIS DRAWING NOR ANY OF THE INFORMATION CONTAINED HEREIN MAY BE REPRODUCED,
COPIED, OR TRANSMITTED IN ANY FORM OR BY ANY MEANS, WITHOUT THE EXPRESS WRITTEN CONSENT OF MUELLER.

DWG file: 850-0065-002-5_B02

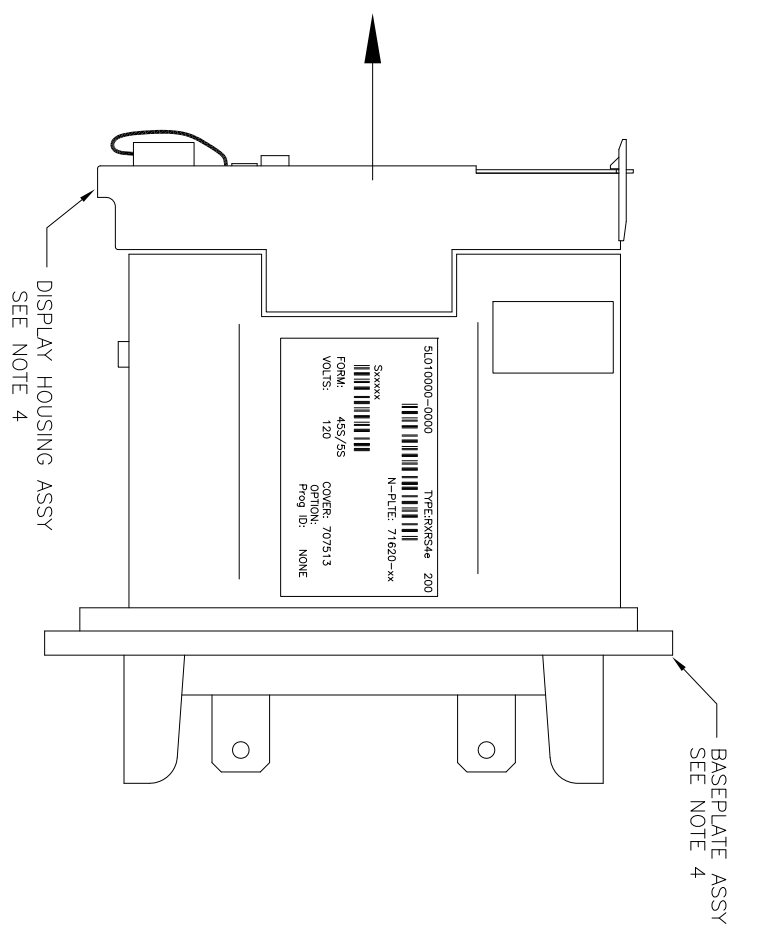
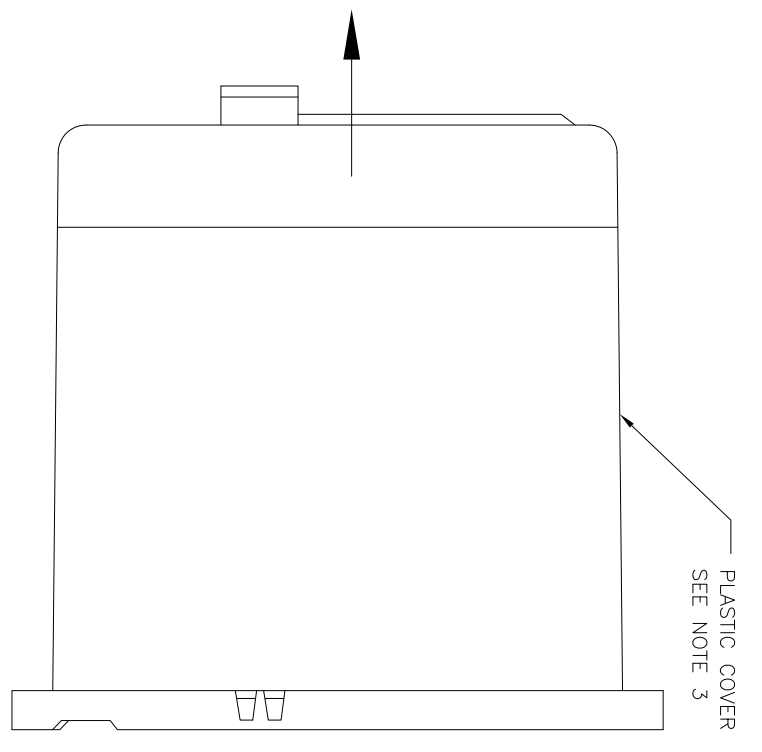
SIZE	PART NO.	REV.
D	850-0065-002_B02	
SCALE: NONE	DO NOT SCALE DRAWING	SHEET 5 OF 5

REVISIONS			
REV	DESCRIPTION	DATE	APPROVED
100	RELEASED PER ECN090020	09/xx/09	

TWIST CCW - SEE NOTE 3



FRONT VIEW - C&I METER



NOTES: UNLESS OTHERWISE SPECIFIED

- 1) THIS IS A STATIC SENSITIVE ASSEMBLY - USE STATIC ELIMINATING MEASURES DURING ASSEMBLY AND HANDLING.
- 2) MANUFACTURE TO IPC 610A CLASS 2 WORKMANSHIP STANDARDS.

METER ASSEMBLY MODIFICATION INSTRUCTIONS

- 3) TO REMOVE THE SOLID PLASTIC COVER, TWIST OFF CCW AND PLACE OFF TO THE SIDE. REMOVE THE LOCKING TAB THAT COMES WITH THE UNIT BEFORE TWISTING.
- INSTRUCTIONS CONTINUED ON SHEET 2

FOR PRODUCT STRUCTURE SEE 890-0026-001

MUELLER SYSTEMS CONFIDENTIAL

THIS DRAWING CONTAINS INFORMATION OF A CONFIDENTIAL AND/OR PROPRIETARY NATURE. IT IS THE PROPERTY OF MUELLER SYSTEMS AND IS NOT TO BE REPRODUCED, COPIED, DISSEMINATED, OR USED, OR DISCLOSED TO OR FOR THE BENEFIT OF ANY OTHER PERSON OR ENTITY WITHOUT THE EXPRESS WRITTEN CONSENT OF MUELLER.

DWG file: 895-0026-001-1_100
UNLESS OTHERWISE SPECIFIED ALL DIMENSIONS ARE IN INCHES OR IN [MILLIMETERS]

TOLERANCES

DECIMALS ANGLES
X ± .03 ± 1/2°
.XXX ± .005

MATERIAL

FINISH

APPROVALS	DATE
DRAWN BY: M/FM	09/11/09
CHECKED BY:	
APPROVED BY:	
APPROVED BY:	

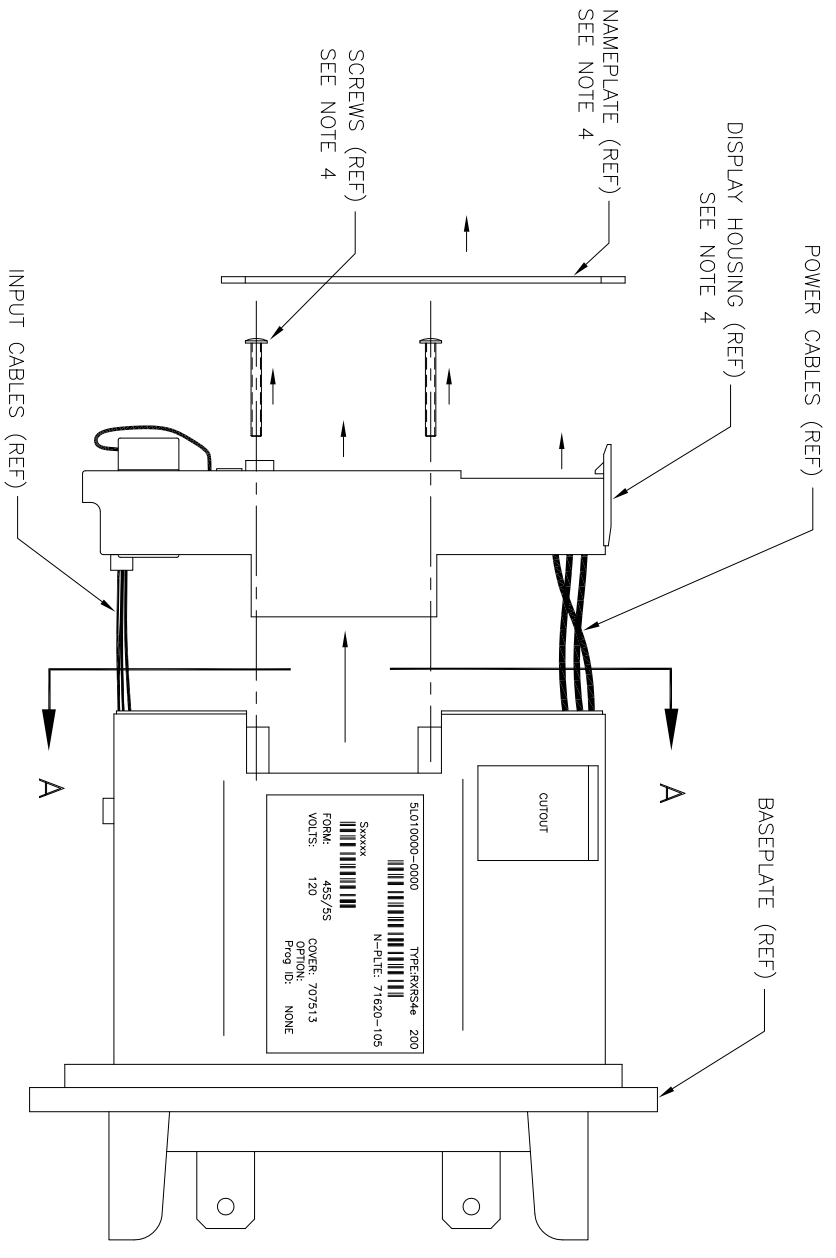
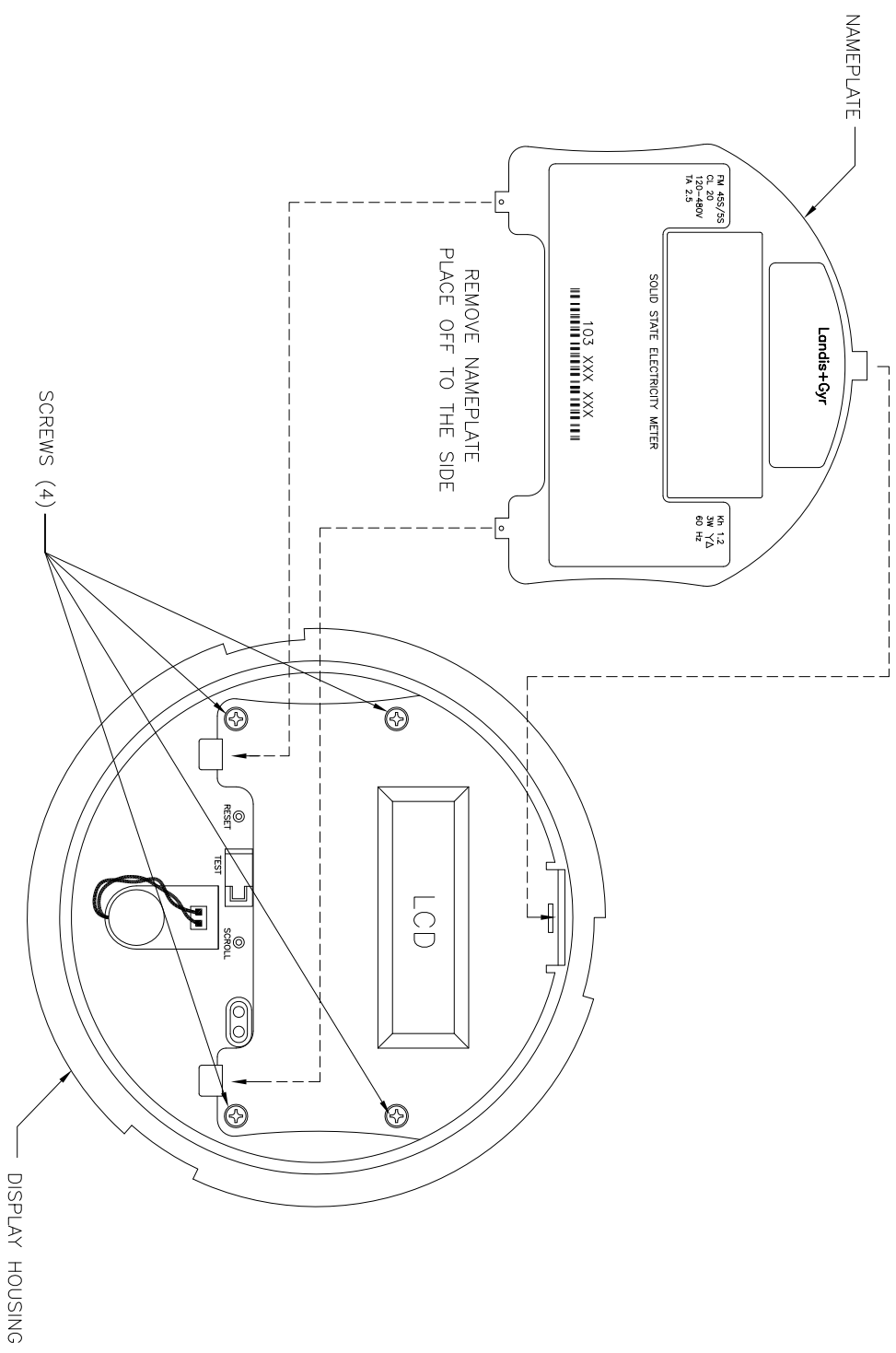
Mueller Systems

TITLE
ASSY & MODIFICATION DWG
SmartMeter-CI (POLYPHASE)
FORM 5S - PLASTIC COVER

SIZE	PART NO.	REV.
D	895-0026-001	100

SCALE 1:1 DO NOT SCALE DRAWING SHEET 1 OF 5

REVISIONS		
REV	DESCRIPTION	DATE
1	SEE SHEET 1 FOR REVISIONS	
		APPROVED



METER ASSEMBLY MODIFICATION INSTRUCTIONS - CONT FOM SHT 1

- 4) REMOVE THE L+G NAMEPLATE FROM THE TOP OF THE DISPLAY HOUSING AND SET IT OFF TO THE SIDE. LOCATE THE 4 SCREWS IN THE HOUSING & REMOVE. THIS WILL SEPARATE THE DISPLAY HOUSING FROM THE BASEPLATE ASSY. PULL THE HOUSING STRAIGHT UP AND THEN ROTATE IT CAREFULLY 90° OFF TO THE RIGHT SIDE. BE CAREFUL NOT TO DISCONNECT ANY WIRES OR DAMAGE ANY COMPONENTS ON THE PWB. ONCE SEPARATED IT SHOULD LOOK AS SHOWN IN VIEW A-A (SHT 3).

WARNING: THE PHYSICAL ATTACHMENT BETWEEN THE BASEPLATE AND THE ELECTRONICS IN THE HOUSING MUST BE MAINTAINED. THE METER IS CALIBRATED TO PROVIDE ACCURATE READINGS ONLY FOR THE BASE PLATE IT WAS ORIGINALLY MATED WITH. IF THE INPUT CONNECTORS ARE UNPLUGGED, THEY MUST BE RECONNECTED UPON COMPLETING THE PWA INSTALLATION INTO THE HOUSING.

INSTRUCTIONS CONTINUED ON SHEET 3

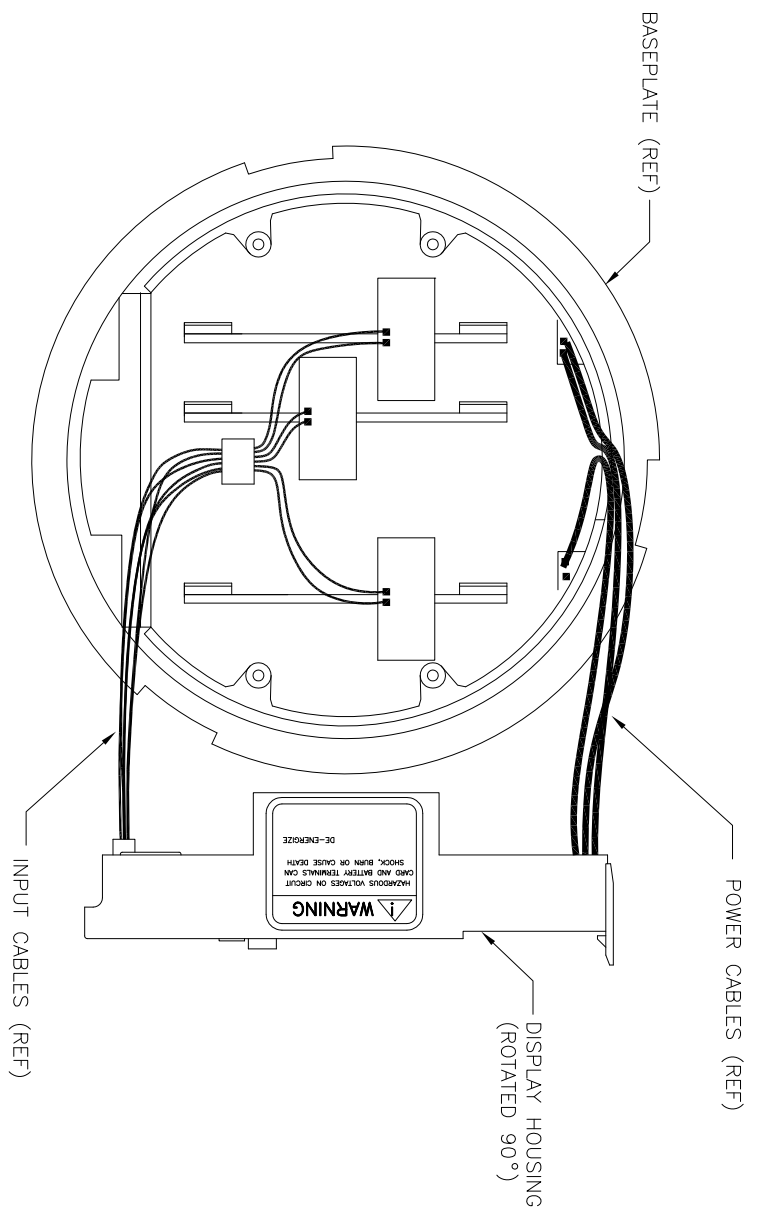
MUELLER SYSTEMS CONFIDENTIAL
THIS DRAWING CONTAINS INFORMATION OF A CONFIDENTIAL AND/OR PROPRIETARY NATURE. IT IS TO BE KEPT CONFIDENTIAL AND NOT DISCLOSED TO OR FOR THE BENEFIT OF ANY OTHER PERSON OR ENTITY WITHOUT THE EXPRESS WRITTEN CONSENT OF MUELLER.

DWG file: 895-0026-001-2-100

SIZE	PART NO.	REV.
D	895-0026-001	100
SCALE: NONE	DO NOT SCALE DRAWING	SHEET 2 OF 5

8 7 6 5 4 3 2 1

REVISIONS			
REV	DESCRIPTION	DATE	APPROVED
SEE SHEET 1 FOR REVISIONS			



VIEW 'A-A'

VIEW OF METER WITH DISPLAY HOUSING REMOVED

MUELLER SYSTEMS CONFIDENTIAL
 THIS DRAWING CONTAINS INFORMATION OF A CONFIDENTIAL AND/OR PROPRIETARY NATURE. IT IS NOT TO BE REPRODUCED, COPIED, DISTRIBUTED, USED, OR DISCLOSED TO OR FOR THE BENEFIT OF ANY OTHER PERSON OR ENTITY WITHOUT THE EXPRESS WRITTEN CONSENT OF MUELLER.

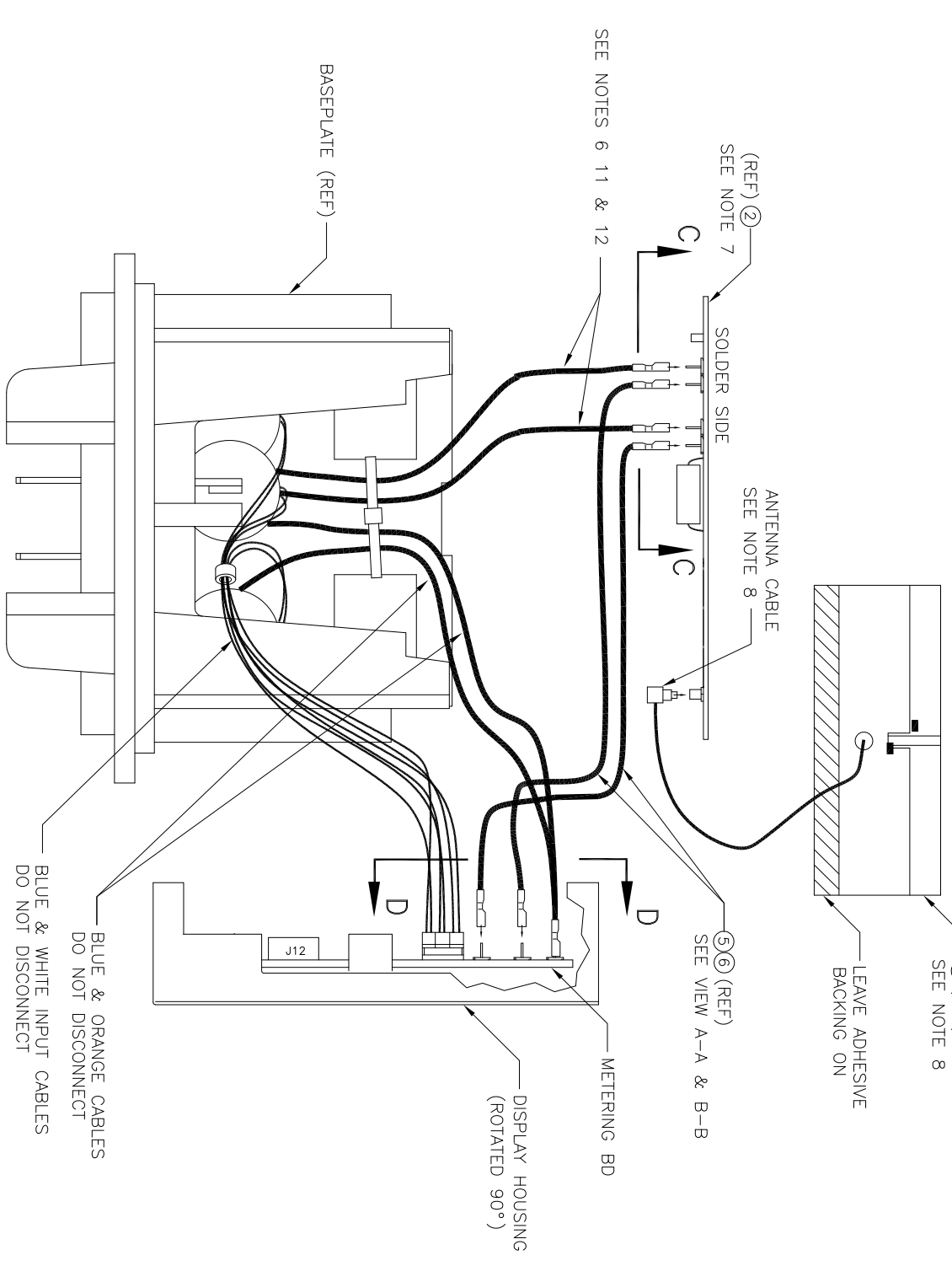
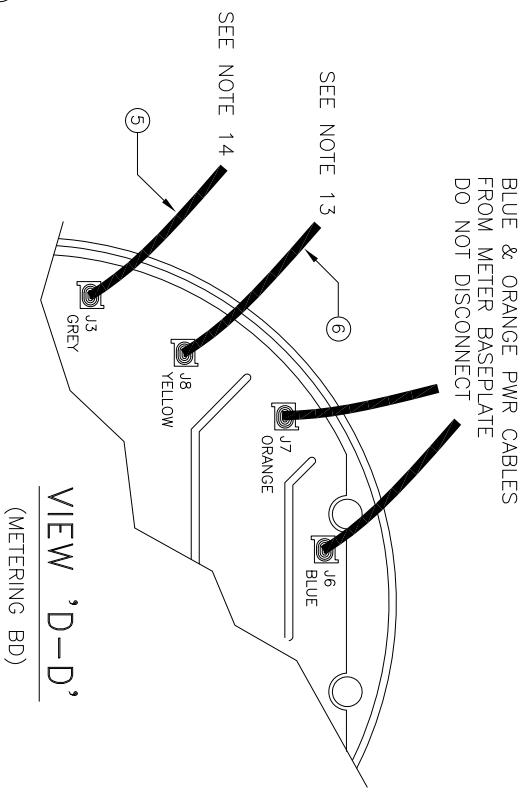
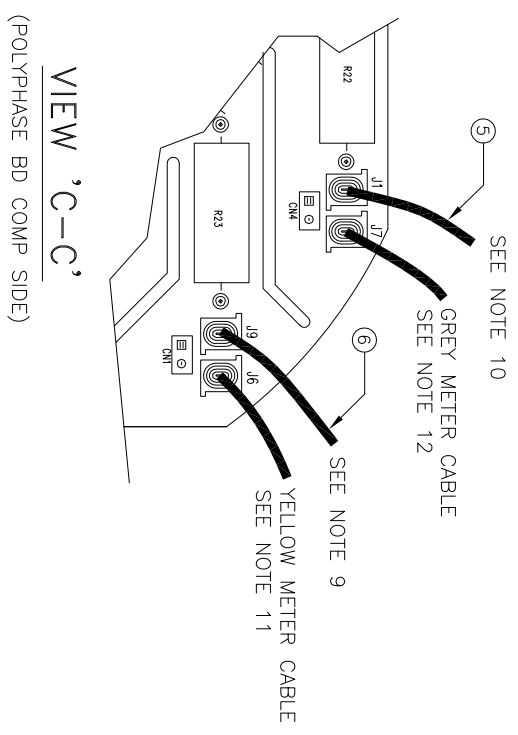
DWG file: 895-0026-001-3-100

SIZE	PART NO.	REV.
D	895-0026-001	100

SCALE: NONE DO NOT SCALE DRAWING SHEET 3 OF 5

8 7 6 5 4 3 2 1

REVISIONS		
REV	DESCRIPTION	DATE
1	SEE SHEET 1 FOR REVISIONS	



METER ASSEMBLY MODIFICATION INSTRUCTIONS - CONT FOM SHT 3

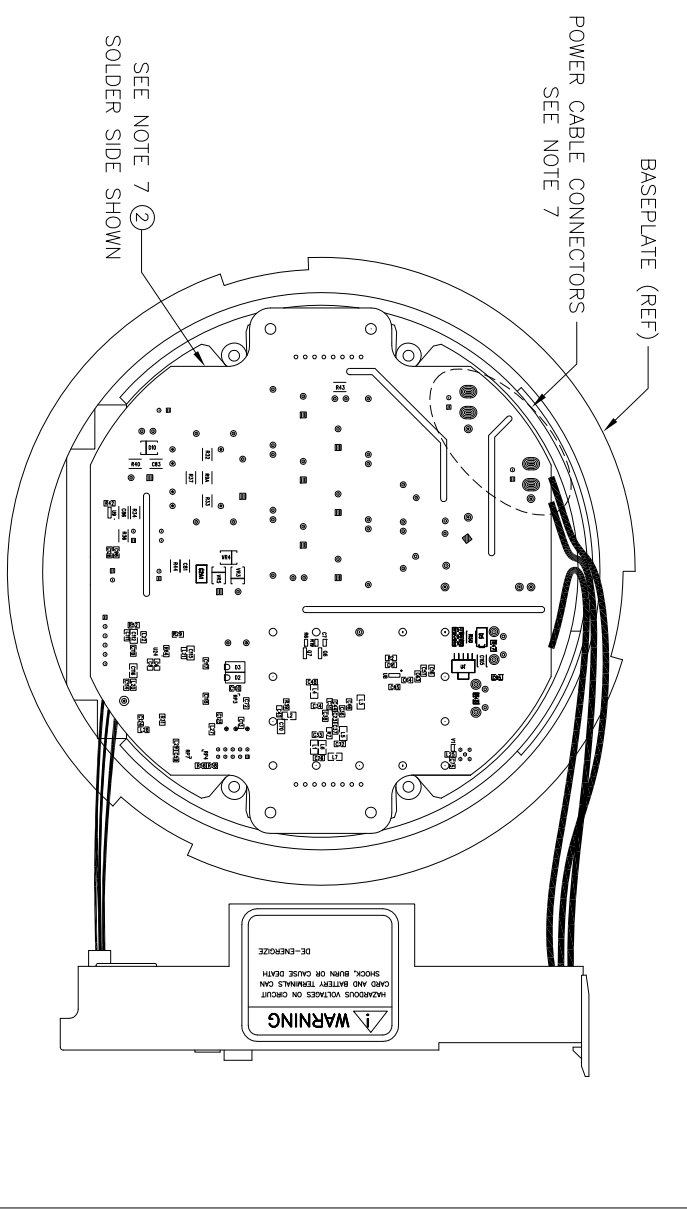
- 6) ONCE THE METER DISPLAY HOUSING HAS BEEN SEPARATED FROM THE BASEPLATE & PLACED OFF TO THE SIDE, THE FOLLOWING POWER CABLES NEED TO BE DISCONNECTED:
 - DISCONNECT THE YELLOW METER CABLE FROM J8 ON THE METERING BD
 - DISCONNECT THE GREY METER CABLE FROM J3 ON THE METERING BD
 NOTE: THE BLUE & ORANGE POWER CABLES SHOULD REMAIN CONNECTED ALONG WITH THE BLUE & WHITE INPUT CABLES. DO NOT DISCONNECT!
 - 7) TAKE THE POLYPHASE BOARD (ITEM2) AND CAREFULLY ROTATE IT 180° SO THAT THE COMPONENT SIDE IS FACE DOWN INTO THE METER AND THE POWER CABLE CONNECTORS ARE LOCATED ON THE UPPER LEFT SIDE AS SHOWN IN VIEW E-E (SHT x).
 - 8) PLUG THE ANTENNA CABLE (ITEM3) INTO THE MMCX CONNECTOR (J4) ON THE POLYPHASE BD. THE ANTENNA SHOULD REMAIN UN-ATTACHED TO THE UNIT AT THIS TIME. IT IS EASIER TO ATTACH IT LATER IN THE ASSEMBLY PROCESS - LEAVE THE ADHESIVE BACKING ON.
 - 9) TAKE THE YELLOW CABLE ASSY (ITEM6) AND PLUG ONE END OF IT INTO THE FASTON TAB 'J9' ON THE POLYPHASE BD (SEE VIEW C-C).
 - 10) TAKE THE GREY CABLE ASSY (ITEM5) AND PLUG ONE END OF IT INTO THE FASTON TAB 'J1' ON THE POLYPHASE BD (SEE VIEW C-C).
 - 11) PLUG THE YELLOW METER CABLE (WHICH WAS DISCONNECTED FROM THE METERING BD) INTO THE FASTON TAB 'J6' ON THE POLYPHASE BD (SEE VIEW C-C).
 - 12) PLUG THE GREY METER CABLE (WHICH WAS DISCONNECTED FROM THE METERING BD) INTO THE FASTON TAB 'J7' ON THE POLYPHASE BD (SEE VIEW C-C).
 - 13) PLUG THE OTHER END OF THE YELLOW CABLE ASSY (ITEM6) INTO THE FASTON TAB 'J8' ON THE METERING BD (SEE VIEW D-D).
 - 14) PLUG THE OTHER END OF THE GREY CABLE ASSY (ITEM5) INTO THE FASTON TAB 'J3' ON THE METERING BD (SEE VIEW D-D).
- NOTE: AT THIS POINT ALL OF THE POWER CABLE CONNECTIONS ARE COMPLETE AND THE DISPLAY HOUSING IS READY TO BE RE-INSTALLED ONTO THE BASEPLATE.
- INSTRUCTIONS CONTINUED ON SHEET 5

MUELLER SYSTEMS CONFIDENTIAL
 THIS DRAWING CONTAINS INFORMATION OF A CONFIDENTIAL AND/OR PROPRIETARY NATURE. IT IS TO BE KEPT SECRET AND NOT TO BE DISCLOSED TO OR FOR THE BENEFIT OF ANY OTHER PERSON OR ENTITY WITHOUT THE EXPRESS WRITTEN CONSENT OF MUELLER.

DWG file: 895-0026-001-3_A00

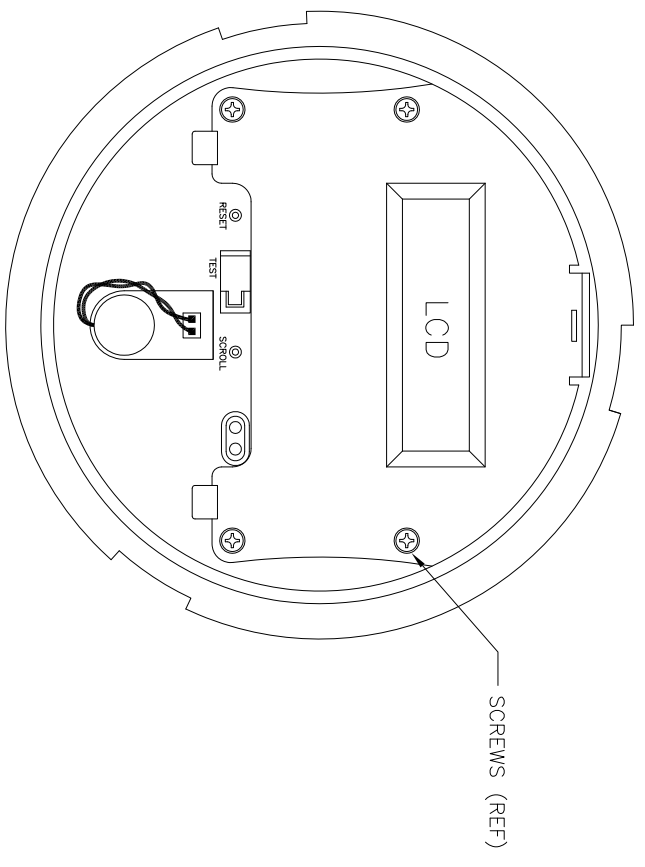
SIZE	PART NO.	REV.
D	895-0026-001	A00
SCALE: NONE	DO NOT SCALE DRAWING	SHEET 3 OF 5

REVISIONS			
REV	DESCRIPTION	DATE	APPROVED
1	SEE SHEET 1 FOR REVISIONS		

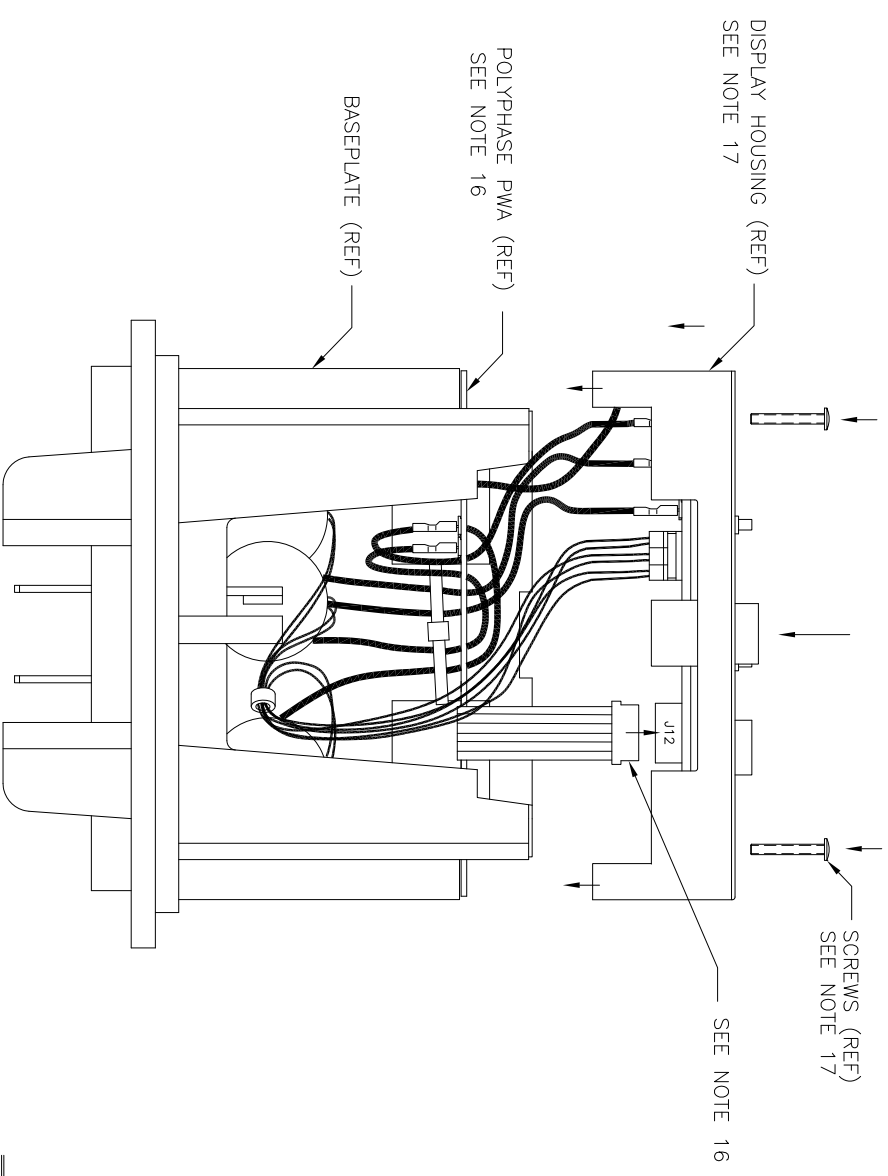


TOP VIEW w/ POLYPHASE PWA INSTALLED

- METER ASSEMBLY MODIFICATION INSTRUCTIONS – CONT FOM SHT 4
- 16) CAREFULLY LOWER THE POLYPHASE PWA (ITEM3) INTO THE METER AND PLACE IT ONTO THE BASEPLATE ASSY. MOVE OR ADJUST ANY CABLES THAT ARE BELOW THE PWA SO THAT THEY NOT INTERFER WITH THE INSTALLATION. PLUG IN THE FLEX CABLE FROM THE POLYPHASE BD INTO CONN J12 ON THE METERING BD (LOCATED IN THE DISPLAY HOUSING).
 - 17) ONCE THE POLYPHASE PWA IS INSTALLED. CAREFULLY LINE UP THE DISPLAY HOUSING & AND LOWER IT ONTO THE BASEPLATE ASSY. AGAIN, MOVE OR ADJUST ANY CABLES SO THAT THEY DO NOT INTERFER WITH THE INSTALLATION. INSERT THE 4 SCREWS BACK INTO THE HOUSING AND TIGHTEN DOWN FIRMLY.
- INSTRUCTIONS CONTINUED ON SHT 6



FRONT VIEW



SIDE VIEW

MUELLER SYSTEMS CONFIDENTIAL
 THIS DRAWING CONTAINS INFORMATION OF A CONFIDENTIAL AND/OR PROPRIETARY NATURE. IT IS NOT TO BE REPRODUCED, COPIED, DULGED, USED, OR DISCLOSED TO OR FOR THE BENEFIT OF ANY OTHER PERSON OR ENTITY WITHOUT THE EXPRESS WRITTEN CONSENT OF MUELLER.

DWG file: 895-0026-001-3-100

SIZE	PART NO.	REV.
D	895-0026-001	100
SCALE: NONE	DO NOT SCALE DRAWING	SHEET 3 OF 5

8

7

6

5

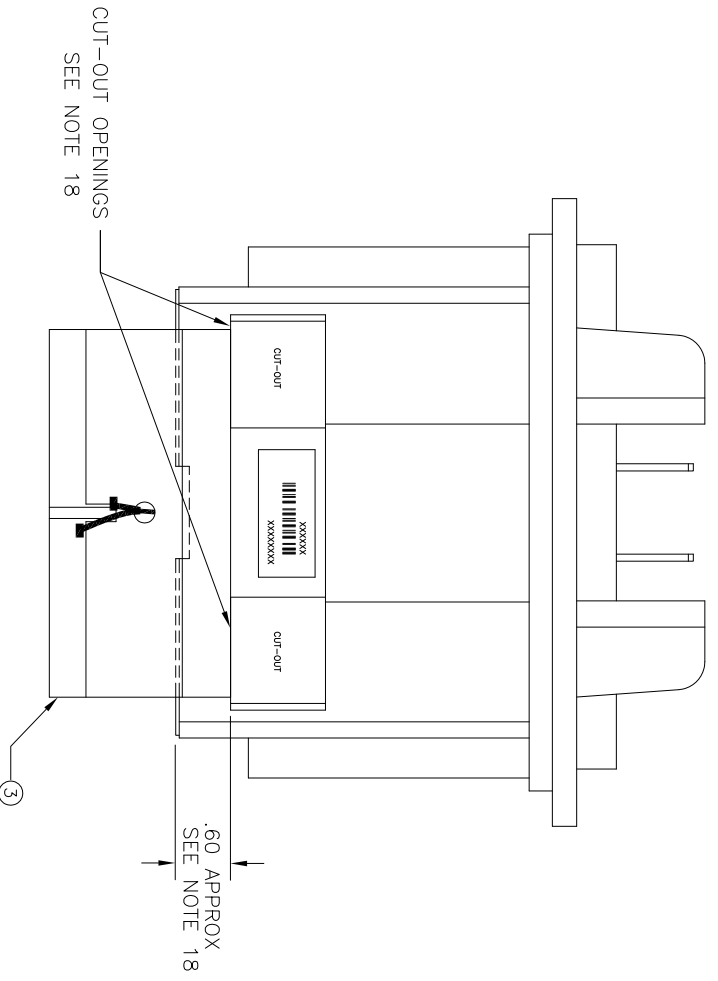
4

3

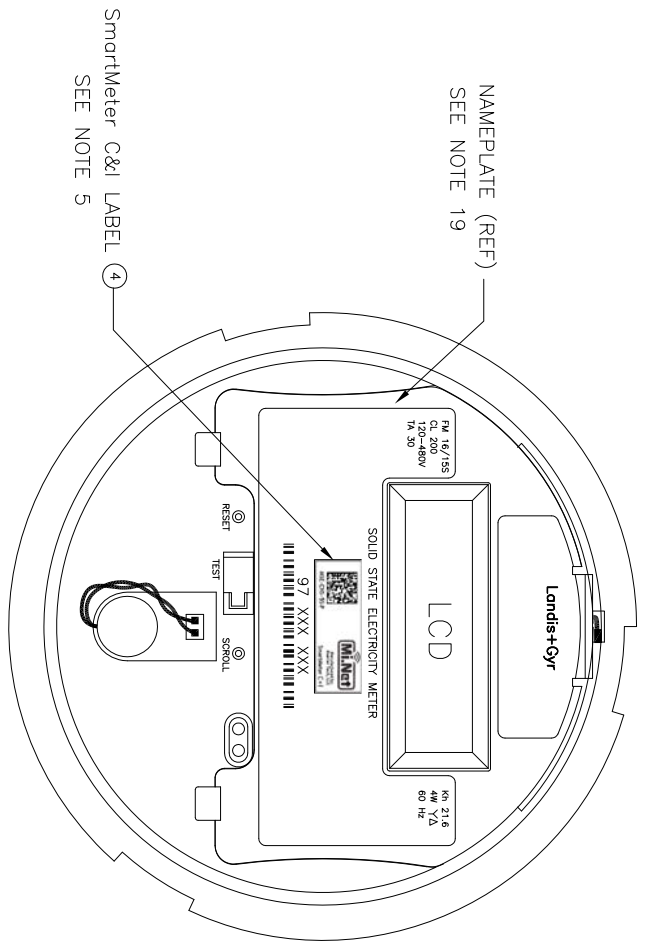
2

1

REVISIONS			
REV	DESCRIPTION	DATE	APPROVED
1	SEE SHEET 1 FOR REVISIONS		



ANTENNA INSTALLATION



FRONT VIEW

METER ASSEMBLY MODIFICATION INSTRUCTIONS – CONT FOM SHT 5

- 18) TAKE THE EXTERNAL ANTENNA (ITEM3) WHICH IS HANGING OFF THE POLYPHASE BD AND LINE UP THE BOTTOM WITH THE CUT-OUT OPENINGS IN THE HOUSING. REMOVE THE ADHESIVE BACKING AND SECURE THE ANTENNA TO THE HOUSING AT THE APPROXIMATE DIMENSION INDICATED – THE BOTTOM OF THE ANTENNA SHOULD BE HORIZONTAL TO THE CUT-OUT OPENINGS ON THE HOUSING. THE FOLLOWING INSTRUCTIONS MUST BE MAINTAINED FOR THIS INSTALLATION:
 - APPLICATION ONLY AT 70° F +/- 10°.
 - CLEAN SURFACE WITH ISOPROPYL ALCOHOL PRIOR TO STICKING ANT.
 - THE ADHESIVE LINER SHOULD ONLY BE REMOVED IMMEDIATELY PRIOR TO THE APPLICATION AND CARE SHOULD BE USED TO ENSURE NO DIRT IS PICKED UP.
- 19) INSTALL THE L+G NAMEPLATE BACK INTO IT'S LOCATION ON THE DISPLAY HOUSING.
- 20) ADD THE SmartMeter C&I PRODUCT BAR CODE/SERIAL NUMBER LABEL (ITEM4) ONTO THE NAMEPLATE ON THE DISPLAY HOUSING IN THE APPROX POSITION SHOWN. IT MUST BE VISIBLE FROM THE TOP OF THE UNIT & CENTERED JUST BELOW THE LCD AS SHOWN. THIS LABEL CONTAINS THE SERIAL NUMBER AND PRODUCT ID. THE FIRST 2 NUMBERS INDICATE TO THE TESTER WHAT TO PROGRAM INTO THE UNIT AND THESE NUMBERS WILL CONTINUE TO BE SUPPLIED BY MUELLER TECH UNTIL FURTHER NOTICE:
 - 28XXXXXX / INDICATES SMARTMETER C&I VERSION

MUELLER SYSTEMS CONFIDENTIAL
 THIS DRAWING CONTAINS INFORMATION OF A CONFIDENTIAL AND/OR PROPRIETARY NATURE. IT IS NOT TO BE REPRODUCED, COPIED, DULGED, USED, OR DISCLOSED TO OR FOR THE BENEFIT OF ANY OTHER PERSON OR ENTITY WITHOUT THE EXPRESS WRITTEN CONSENT OF MUELLER.

DWG file: 895-0026-001-3-100

SIZE	PART NO.	REV.
D	895-0026-001	100
SCALE: NONE	DO NOT SCALE DRAWING	SHEET 6 OF 7

8

7

6

5

4

3

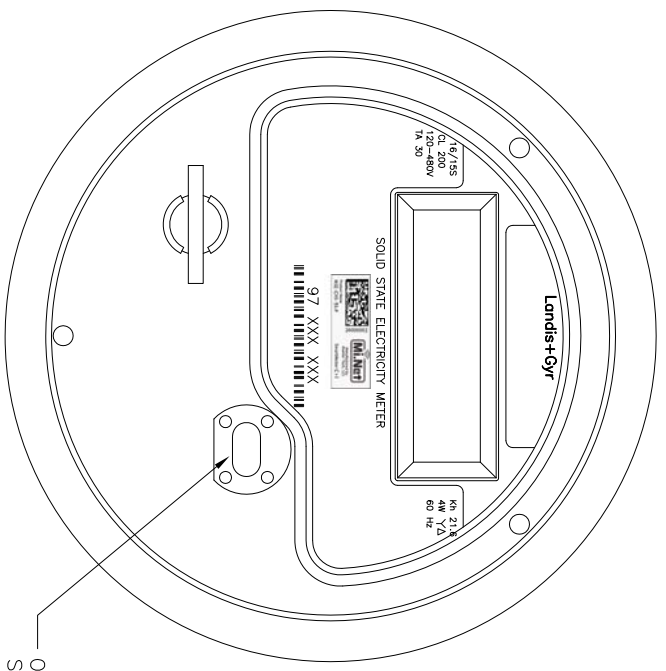
2

1

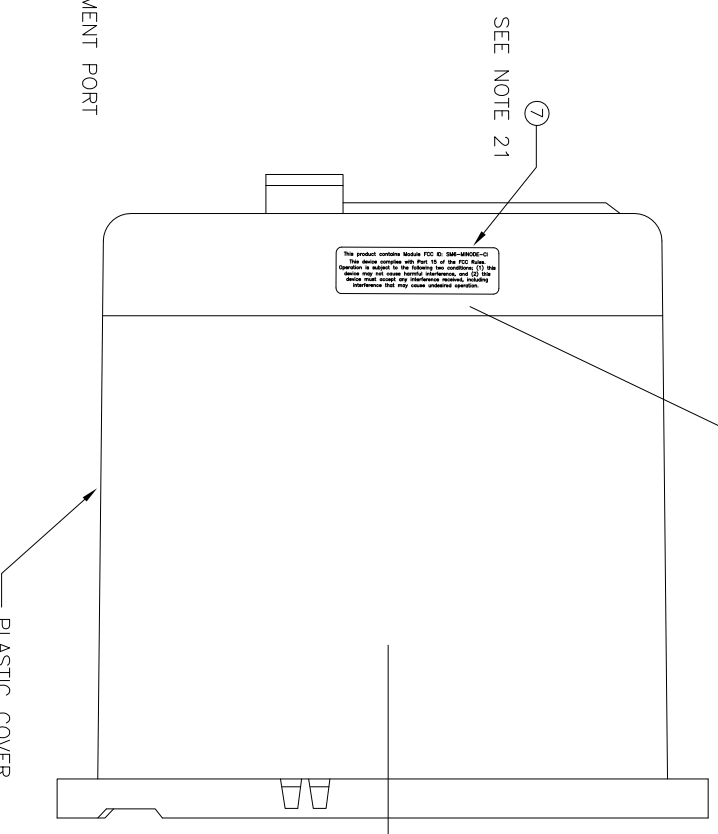
REVISIONS		
REV	DESCRIPTION	DATE
1	SEE SHEET 1 FOR REVISIONS	

This product contains Module FCC ID: SM6-MINODE-CI
 This device complies with Part 15 of the FCC Rules.
 Operation is subject to the following two conditions: (1) this
 device may not cause harmful interference, and (2) this
 device must accept any interference received, including
 interference that may cause undesired operation.

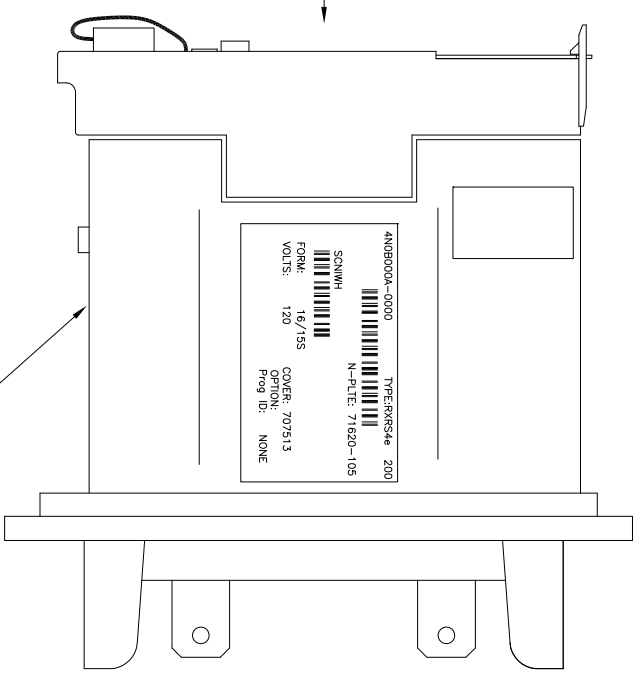
SmartMeter-CI FCC LABEL
 SCALED & ROTATED FOR CLARITY



OPTICAL ALIGNMENT PORT
 SEE NOTE 22



PLASTIC COVER



MODIFIED BASEPLATE ASSY

4NDR00A-0000 TYPE:RKR54# 200
 N-PLIE: 71620-105
 SCHWAB
 FORM: 16/155 COVER: 707913
 VOLTS: 120 OPTION: Plug ID: NONE

MODIFIED C&I METER

METER ASSEMBLY MODIFICATION INSTRUCTIONS - CONT FOM SHT 6

- 21) APPLY THE SmartMeter-CI FCC LABEL (ITEM7) WITH THE FCC ID INFO IN THE APPROX AREA SHOWN ON THE COVER. THIS LABEL SHOULD REFERENCE THE FCC ID NUMBER ON THE MINODE-C&I LABEL.
- 22) RE-INSTALL THE SOLID GRAY PLASTIC COVER BY TWISTING CW INTO IT'S LOCKED POSITION. LINE UP OPTICAL ALIGNMENT PORT ON THE COVER TO BE DIRECTLY OVER THE LED'S OF THE DISPLAY HOUSING. THE UNIT IS NOW FULLY ASSEMBLED READY FOR TEST.

MUELLER SYSTEMS CONFIDENTIAL
 THIS DRAWING CONTAINS INFORMATION OF A CONFIDENTIAL AND/OR PROPRIETARY NATURE. IT IS NOT TO BE REPRODUCED, COPIED, DISCLOSED TO OR FOR THE BENEFIT OF ANY OTHER PERSON OR ENTITY WITHOUT THE EXPRESS WRITTEN CONSENT OF MUELLER.

DWG file: 895-0026-001-7-100

SIZE	PART NO.	REV.
D	895-0026-001	100
SCALE: NONE	DO NOT SCALE DRAWING	SHEET 7 OF 7