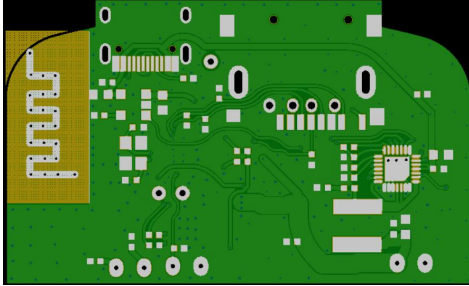
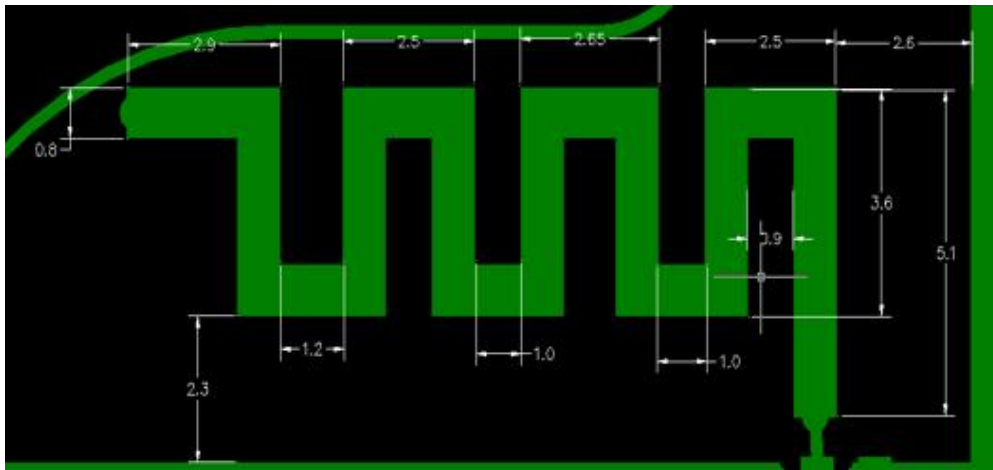
	SUBJECT: subject	PAGE NO.	1 OF 2
	PW20 PCB Antenna Specification	VERSION	A1
		DATE	2022.9.26

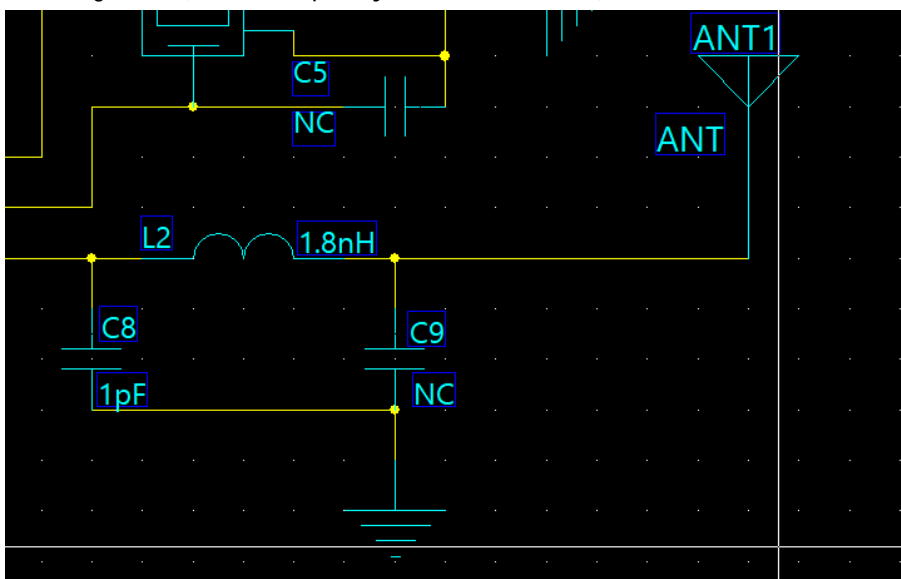
1. PW20 uses PCB board antenna.




2. Antenna size.Unit:mm



3. Matching circuit:(Center frequency is about 2441MHz)

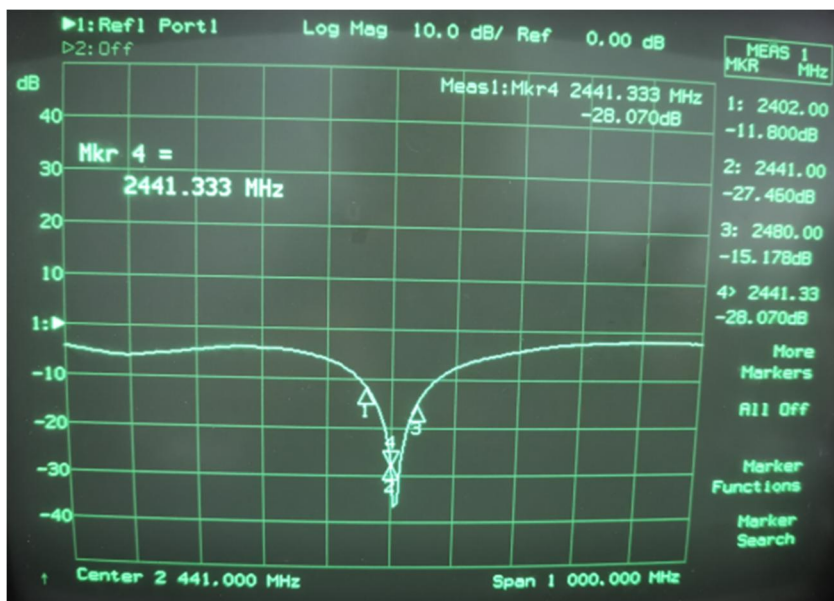


4. Description:

	SUBJECT: subj ect	PAGE NO.	2 OF 2
	PW20 PCB Antenna Specification	VERSION	A1
		DATE	2022. 9. 26


- 4.1. Antenna name: PW20
- 4.2. Material:FR4 (PCB board antenna)
- 4.3. Working frequency: B:2400~2500 MHz
- 4.4. VSWR:<2
- 4.5 Peak Gain: 2.5 dBi@2441MHz
- 4.6 Impedance: 50 OHM
- 4.7 Return Loss , Smith chart & VSWR

Return Loss

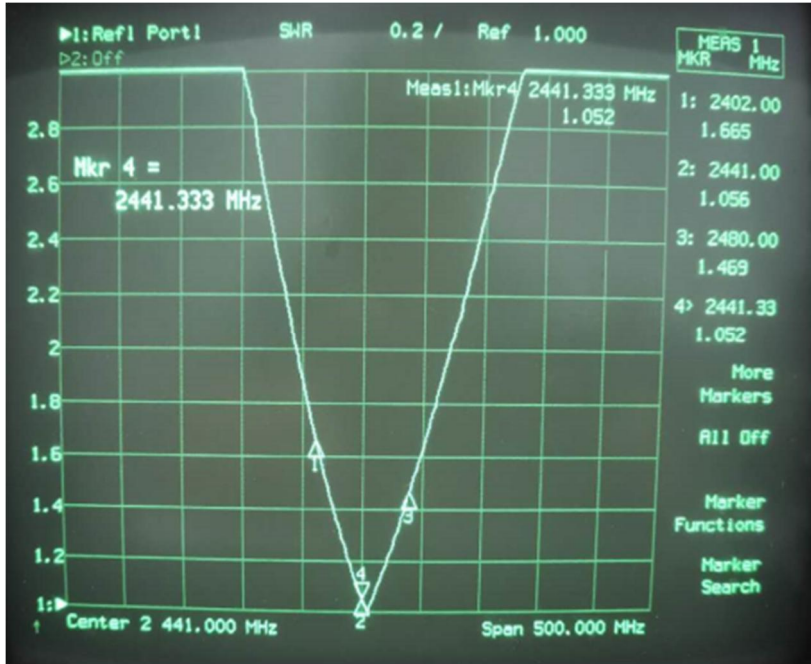


Smith chart



	SUBJECT: subject	PAGE NO.	3 OF 2
	PW20 PCB Antenna Specification	VERSION	A1
		DATE	2022.9.26

VSWR



5. 3D Radiation Gain @2450MHz(unit:dBi)

