

1.6 User Manual

Notice:

Stick-N-Find is designed and to be used solely to help find your personal possessions. The product should not be relied on to find persons or monitor a person's location and should be used to act as an aid in locating your personal items. Stick-N-Find is not to be used or relied upon to find or track the whereabouts of persons. This product does not substitute parental, adult or professional supervision.

Use of 3rd party application may reduce Stick-N-Find battery life.

FCC Notices:

This device complies with Part 15 of the FCC Rules. Operation is subject to the following two conditions: (1) this device may not cause harmful interference, and (2) this device must accept any interference received, including interference that may cause undesired operation.

Changes or modifications not expressly approved by the party responsible for compliance could void the user's authority to operate the equipment.

BEWARE OF CHOKING HAZARD – KEEP STICK-N-FIND OUT OF THE REACH OF YOUNG CHILDREN.

Stick-N-Find Inc.

3201 Griffin Rd, Suite 200
Fort Lauderdale, FL 33312

support@sticknfind.com

For Customer Service Please Call:
+1 (866)-777-7210



INSTRUCTIONS

Stick-N-Find Stickers

Welcome to Stick-N-Find



Thank you for purchasing Stick-N-Find

Stick-N-Find is a fun, new way to find your stuff and you are one of the first people in history able to harness this life changing technology. Join others like you on our Facebook page and explore how Stick-N-Find stickers change lives.

www.facebook.com/sticknfind

Device Compatibility

iPhone 5S, 4S, iPhone 5, iPod Touch 5-Gen, iPad 3, iPad 4, iPad Mini

Android devices supporting Bluetooth Smart, like Samsung S3, S3 mini, S4, Note 2, (Motorola RAZR MAXX, HTC ONE, HTC Droid DNA, HTC ONE X+, etc).

Compatibility Information

Devices that support "Bluetooth 4.0 Smart" accessories work with Stick-N-Find. Devices made before those listed above do not have Bluetooth 4.0 Low Energy and will not work.

2

Quick Start Guide



Step One

Search for "Stick-N-Find" on the app Store and download the latest version of the app to your device.

Step Two

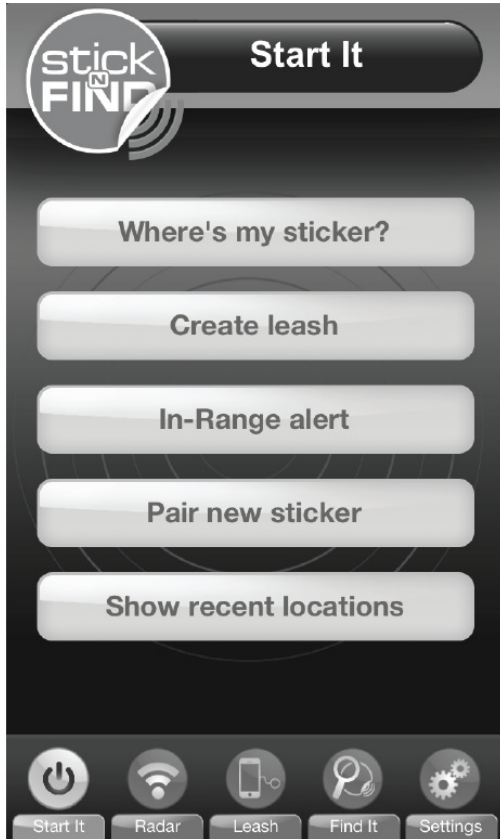
Turn on Bluetooth in your device settings and launch the Stick-N-Find app with your stickers close by.

Step Three

Select "Pair new sticker" on the starting screen and follow the instructions within the app to pair and name your stickers.



3



4

Start It



Where's My Sticker

This tool helps you find your sticker. If it is within range you will be taken to the Radar screen, if not, you can set up an In-Range alert.

Create Leash

The virtual leash sets an alarm that sounds when the connection between the sticker and your device is lost.

In-Range Alert

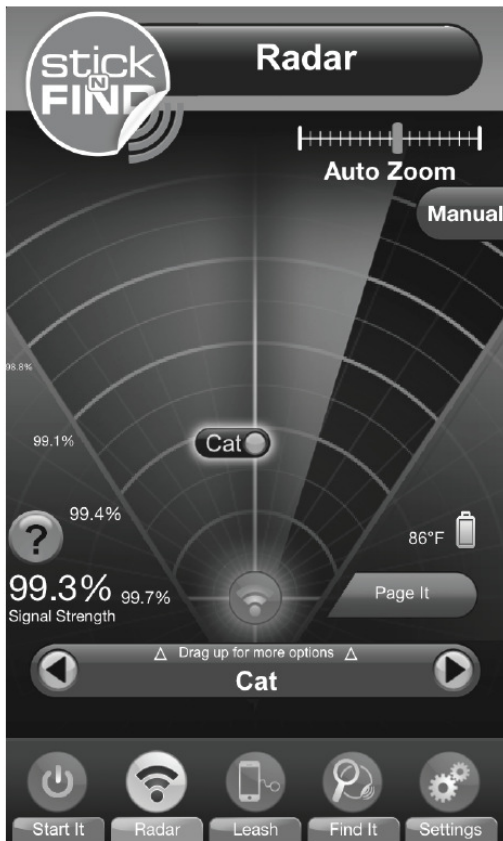
When a sticker is out of range or lost you can set an In-Range Alert to notify you later when your device detects the stickers signal.

Pair new sticker

Stickers ship in deep sleep mode and must be tapped 5 times to 'wake' them up. Once paired you will not need to do this again.



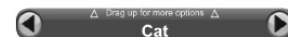
5



6

Radar

Select a Sticker



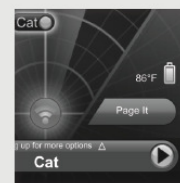
Press the left and right arrow buttons at the bottom of the screen to select which sticker you would like to track. You can also swipe up to connect, disconnect and edit a sticker's name.

Searching and Connecting

Give the radar up to one minute to find the sticker and connect. The blue dot represents successful connection. The radar is not directional, but rather an estimate distance to the sticker. Walk in any direction until the sticker's dot reaches the bottom.

Page It

When a sticker is close (blue) to your device tap the "Page It" button for assistance. The sticker will beep and light up for 5 seconds.



Radio Feet Explained

Radio Feet do not represent ACTUAL distance. They rely on the "radio" strength of the Bluetooth signal. Read more about signal strength on page 19.



7



8

Virtual Leash



Select a Sticker

Press the left and right arrow buttons at the bottom of the screen to select which sticker you would like to track.

Choose Alert

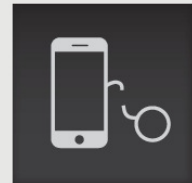
You can choose for the phone to alert you with a ring, the sticker to alert you with a buzz and flash, or select both.

Out Of Range

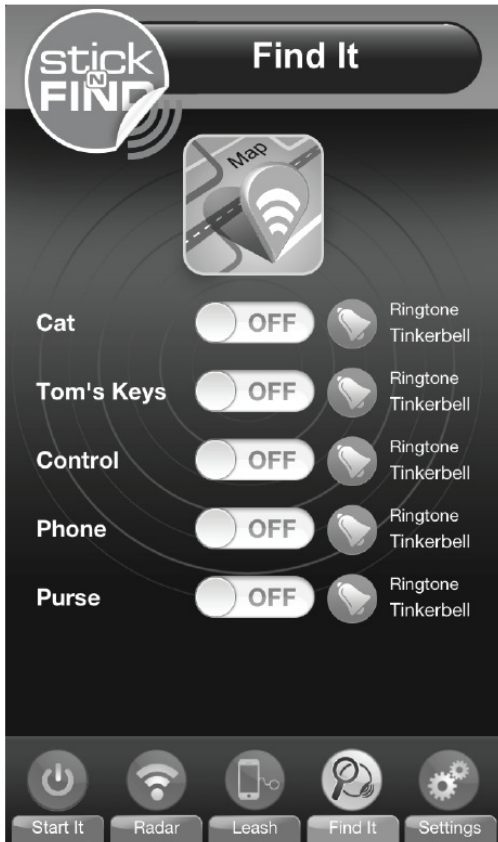
Selecting out of range will cause the alert(s) to sound when your device and sticker are no longer in range.

Virtual Leash Range

The Virtual Leash range is not based on ACTUAL distance. It relies on the Bluetooth connection. Read more about signal range on page 19.



9



10

Find It In-Range Alerts



In-Range Alerts

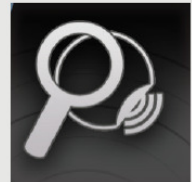
Scroll to a sticker that is missing or out of range and simply turn on the alert. Once that sticker comes into range, the phone will alert you.

Alert

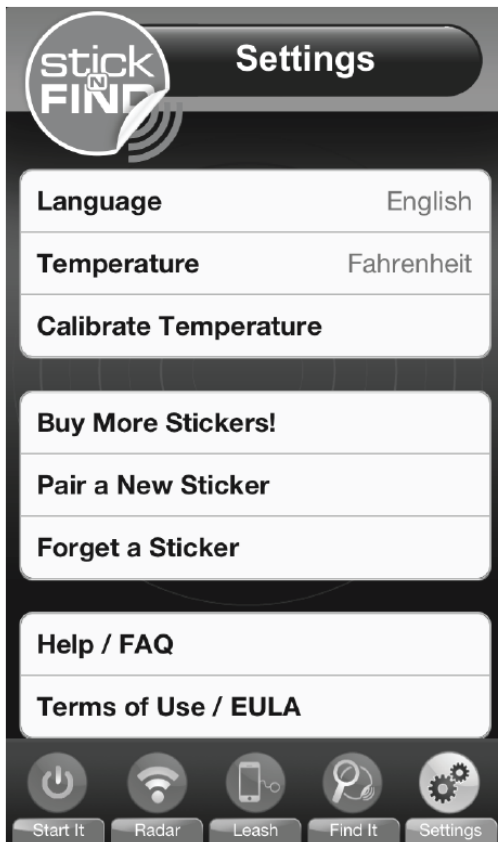
Once the tracking signal of a Stick-N-Find sticker is detected the app will cause your phone to alert you, then use Radar to find it.

Find It Alert Explained

The Find It alert is not based on ACTUAL distance. It relies on the Bluetooth signal. Read more about signal range on page 19.



11



12

Settings



Language

The Stick-N-Find app supports many languages including: Spanish, French, Swedish, Chinese, Korean, Dutch, Portuguese, Greek, Italian, German, Hebrew and Arabic. Please let us know if you see any mistakes in translation so we can fix them.

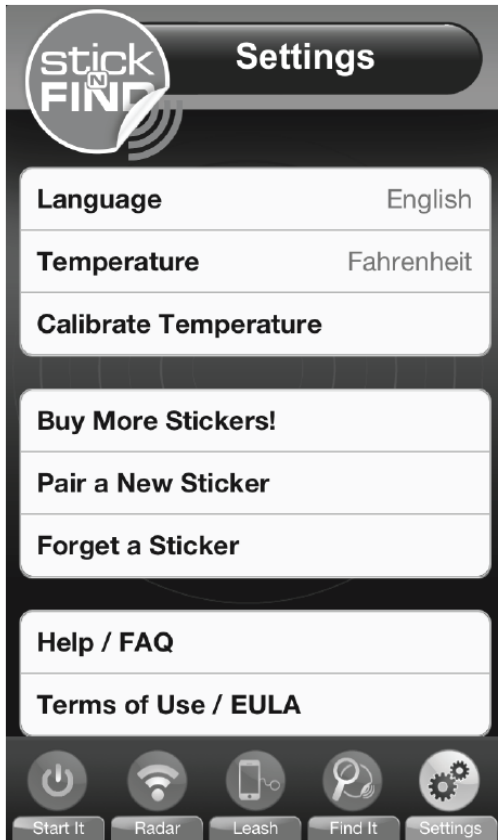
Temperature

Stick-N-Find stickers have a built-in thermometer. It is +/- 1 degree accurate. Please allow 10 minutes for the built in thermometer to adjust to new temperature changes. Select here to display the temperature in Celsius or Fahrenheit.

Temperature Calibration

You can calibrate here the built-in thermometer of a Stick-N-Find. Place it in an area that you know the exact temperature. Wait for 10 minutes. Click the "Calibrate Temperature" button and enter the known temperature.

13



14

Settings

Stickers, Stickers, and more Stickers.

Pair new stickers, unpair stickers you have previously paired, and even buy new stickers that come in a variety of colors.

Help / FAQ

We have compiled an FAQ to answer most common support questions and issues. Please visit this section for questions and issues. You can always email us also at support@sticknfind.com

Terms of Use / EULA

Please be sure you understand the terms and conditions of use as well as the EULA for the Stick-N-Find app and product.

15

Stick It On Your Stuff



Stick-N-Find Stickers Find Stuff

Once you have the app downloaded, your stickers paired, and know how to use them, it is time to choose the important stuff that you do not want to lose. Join the finders on our Facebook Community and get tips and ideas on how to maximize the use of your Stick-N-Find stickers.

www.facebook.com/sticknfind

Commonly Lost Stuff

- Keys
- Mobile phones
- Remote Controls
- Pets
- Wallets and Purses
- Chargers
- Tools

16

Securing The Sticker



Adhesive Information

Peel the back and place the sticker on a clean surface. Press hard to ensure a good bond. The bonding process may take up to 24-hours to fully complete.



Troubleshooting



Problem: Sticker not found by Stick-N-Find app. Circle of sticker on the radar screen keeps spinning and no connection can be made.

Solution: If you have problems connecting stickers to your device, try to restart Bluetooth on your device. To do this go to your device settings, then Bluetooth settings, and turn your devices Bluetooth Off, wait 5 seconds, then turn it back on. Go to the Stick-N-Find app and try connecting again.

Problem: The app is unable to see any of my stickers.

Solution: Check that your device is supported by Stick-N-Find. Note that the iPad, iPad2, iPhone 3, 3GS and iPhone 4, Samsung S2 etc. are **not compatible**.

Solution: All new stickers are shipped in "Sleeping Mode" that saves battery. Lite tapping a sticker five times in a row will wake it up for 30 seconds. After tapping you will hear a beep and will then have 30 seconds to pair it with a device before it goes back to sleep.

18

Range & Signal Strength



Radio Feet Explained

Radio Feet do not represent ACTUAL distance. It relies on the "Radio" strength of the Bluetooth signal. The stronger the signal, the closer the Sticker is to the phone. There are many things that can alter or interfere with the signal - how you hold the phone, direction of the phone's antenna, things obstructing the sticker's line of sight etc. human bodies, walls, metal objects also weaken the signal strength.

Optimize Device Signal Strength

Remove any case or bumper for increased signal. Hold your device differently to ensure you do not cover the antenna area.

Optimize Sticker Signal Strength

Metal objects around or close to stickers or devices can disturb or block the signal. Avoid covering stickers with metal.

19

Range & Signal Strength



Q: What are the “Radio Feet” numbers on the Radar Screen?

A: The numbers are signal strength. Since the measurement is done by signal strength there are many outside factors that change the reading. The numbers do not display actual distance measurement in distance as the signal strength changes by the way the device is held, objects within the area reflecting the RF signal, and quality of device’s internal Bluetooth antenna.

Q: What is the difference between colored circles and spinning circle?

A: A spinning circle means that the device is trying to connect to the sticker. If the signal is bad, it could take up to a minute to connect. When the spinning circle becomes a solid color filled circle indicating that the sticker is now fully connected to the device. At that point the Radar can better approximate the sticker distance as the user walks in various directions.

20

Range & Signal Strength



Q: When using the Stick-N-Find app why do I see a constant looping circle inside the sticker when I try to connect to it?

A: This happens when signal quality is poor. Try moving slowly in any direction until the signal gets better. It can take 10 seconds or more for signal to lock in. Walk 20 feet in each direction and wait. Also try holding the device in a horizontal (panorama) orientation as this can improve the reception on many devices due to Bluetooth antenna location. The Bluetooth antenna of most phones is located on top near the camera. Try not to block this area with your hands or fingers.

21

Requirements



iOS Device with Bluetooth 4.0 Low Energy support.

Currently the iPhone 4S, iPhone 5, iPad 3, iPad 4, iPod Touch 5th Gen, and iPad mini all have Bluetooth 4.0 support.

Android devices supporting Bluetooth Smart, like Samsung S3, S3 mini, S4, Note 2, Motorola RAZR MAXX, HTC ONE, HTC Droid DNA, HTC ONE X+, etc.

We expect future iOS devices will have Bluetooth 4.0 support as well.

Check our website for the latest information regarding mobile device compatibility.

Specifications



Technology:

Bluetooth 4.0 Low Energy (Bluetooth Smart)

Range: 150 Feet (45m) line of sight

Battery: Up to 1 year. Replaceable with CR2016 watch battery

Temperature Range: 5F(-15C) to 150F(65C)

More Information

For the latest information about Stick-N-Find products or to purchase additional stickers visit us online at:

www.sticknfind.com

