

FCC TEST REPORT

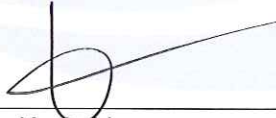
Product Name: Battery Bluf
Trade Mark: bluvision
Model No.: BVBBF
Report Number: 171021001EMC-1
Test Standards: FCC 47 CFR Part 15 Subpart B
Test Result: PASS
Date of Issue: October 31, 2017

Prepared for:


BluVision, Inc
600 Corporate Drive Suite 410 Fort Lauderdale Florida United States
33334

Prepared by:

Shenzhen UnionTrust Quality and Technology Co., Ltd.
16/F, Block A, Building 6, Baoneng Science and Technology Park,
Qingxiang Road No.1, Longhua New District, Shenzhen, China
TEL: +86-755-2823 0888
FAX: +86-755-2823 0886

Tested by: 
 Kevin Liang
 Senior Engineer

Reviewed by: 
 Jim Long
 Senior Supervisor

Approved by: 
 Billy Li
 Technical Director

Date: October 31, 2017


Shenzhen UnionTrust Quality and Technology Co., Ltd.

Version

Version No.	Date	Description
V1.0	October 31, 2017	Original



CONTENTS

1. GENERAL INFORMATION	4
1.1 CLIENT INFORMATION	4
1.2 EUT INFORMATION	4
1.2.1 GENERAL DESCRIPTION OF EUT	4
1.2.2 DESCRIPTION OF ACCESSORIES	4
1.3 DESCRIPTION OF SUPPORT UNITS	5
1.4 TEST LOCATION	5
1.5 TEST FACILITY	5
1.6 DEVIATION FROM STANDARDS	6
1.7 ABNORMALITIES FROM STANDARD CONDITIONS	6
1.8 OTHER INFORMATION REQUESTED BY THE CUSTOMER	6
1.9 MEASUREMENT UNCERTAINTY	6
2. TEST SUMMARY	7
3. EQUIPMENT LIST	8
4. TEST CONFIGURATION	9
4.1 ENVIRONMENTAL CONDITIONS FOR TESTING	9
4.1.1 NORMAL OR EXTREME TEST CONDITIONS	9
4.1.2 RECORD OF NORMAL ENVIRONMENT	9
4.2 TEST MODES	9
4.3 TEST SETUP	9
4.3.1 FOR RADIATED EMISSIONS TEST SETUP	9
4.4 SYSTEM TEST CONFIGURATION	10
5. REFERENCE DOCUMENTS FOR TESTING	11
6. EMC REQUIREMENTS SPECIFICATION	11
6.1 RADIATED EMISSION	11
6.2 CONDUCTED EMISSION	14
APPENDIX 1 PHOTOS OF TEST SETUP	17
APPENDIX 2 PHOTOS OF EUT CONSTRUCTIONAL DETAILS	19
EUT EXTERNAL PHOTOS	19
EUT INTERNAL PHOTOS	23

1. GENERAL INFORMATION

1.1 CLIENT INFORMATION

Applicant:	BluVision, Inc
Address of Applicant:	600 Corporate Drive Suite 410 Fort Lauderdale Florida United States 33334
Manufacturer:	BluVision, Inc
Address of Manufacturer:	600 Corporate Drive Suite 410 Fort Lauderdale Florida United States 33334

1.2 EUT INFORMATION

1.2.1 General Description of EUT

Product Name:	Battery Bluf
Model No.:	BVBBF
Add. Model No.:	N/A
Trade Mark:	bluvision
DUT Stage:	Identical Prototype
Power Supply:	3.7V==10Ah Lithium-ion Polymer Rechargeable Battery (Power the by USB port).
Classification of digital devices:	Class B
Highest Internal Frequency:	40 MHz
Sample Received Date:	October 23, 2017
Sample Tested Date:	October 30, 2017 to October 31, 2017

1.2.2 Description of Accessories

Battery	
Trade Mark:	N/A
Model No.:	N/A
Battery Type:	Lithium-ion Polymer Rechargeable Battery
Rated Voltage:	3.7 Vdc
Limited Charge Voltage:	4.4 Vdc
Rated Capacity:	10 Ah

Cable	
Trade Mark:	N/A
Model No.:	N/A
Description:	USB Micro-B Plug Cable
Cable Type:	Unshielded without ferrite
Length:	0.8 Meter

1.3 DESCRIPTION OF SUPPORT UNITS

The EUT has been tested with associated equipment below.

1) Support Equipment

Description	Manufacturer	Model No.	Serial Number	Supplied by
Notebook	Lenovo	E450	SL10G10780	UnionTrust
Wireless AP	SiZong	WN1200A3	WS1505000003	UnionTrust
Mouse	DELL	MS111	CN-011D3V-73826-62N-0CUT	UnionTrust
U Disk	Kingston	DTSE9 G2	N/A	UnionTrust

2) Support Cable

Cable No.	Description	Connector	Length	Supplied by
--	--	--	--	--

1.4 TEST LOCATION

Shenzhen UnionTrust Quality and Technology Co., Ltd.

Address: 16/F, Block A, Building 6, Baoneng Science and Technology Park, Qingxiang Road No.1, Longhua New District, Shenzhen, China 518109
 Telephone: +86 (0) 755 2823 0888
 Fax: +86 (0) 755 2823 0886

1.5 TEST FACILITY

The test facility is recognized, certified, or accredited by the following organizations:

CNAS-Lab Code: L9069

The measuring equipment utilized to perform the tests documented in this report has been calibrated once a year or in accordance with the manufacturer's recommendations, and is traceable under the ISO/IEC/EN 17025 to international or national standards. Equipment has been calibrated by accredited calibration laboratories.

IC-Registration No.: 21600-1

The 3m Semi-anechoic chamber of Shenzhen UnionTrust Quality and Technology Co., Ltd. has been registered by Certification and Engineering Bureau of Industry Canada for radio equipment testing with Registration No.: 21600-1.

A2LA-Lab Certificate No.: 4312.01

Shenzhen UnionTrust Quality and Technology Co., Ltd. has been accredited by A2LA for technical competence in the field of electrical testing, and proved to be in compliance with ISO/IEC 17025: 2005 General Requirements for the Competence of Testing and Calibration Laboratories and any additional program requirements in the identified field of testing.

FCC Accredited Lab.

Designation Number: CN1194
 Test Firm Registration Number: 259480

1.6 DEVIATION FROM STANDARDS

None.

1.7 ABNORMALITIES FROM STANDARD CONDITIONS

None.

1.8 OTHER INFORMATION REQUESTED BY THE CUSTOMER

None.

1.9 MEASUREMENT UNCERTAINTY

Where relevant, the following measurement uncertainty levels have been estimated for tests performed on the Product as specified in CISPR 16-4-2. This uncertainty represents an expanded uncertainty expressed at approximately the 95% confidence level using a coverage factor of k=2.

No.	Item	Measurement Uncertainty
1	Conducted emission 9KHz-150KHz	±3.8 dB
2	Conducted emission 150KHz-30MHz	±3.4 dB
3	Radiated emission 9KHz-30MHz	±4.9 dB
4	Radiated emission 30MHz-1GHz	±4.7 dB
5	Radiated emission 1GHz-18GHz	±5.1 dB
6	Radiated emission 18GHz-26GHz	±5.2 dB
7	Radiated emission 26GHz-40GHz	±5.2 dB

2. TEST SUMMARY

FCC 47 CFR Part 15 Subpart B Test Cases			
Test Item	Test Requirement	Test Method	Result
Conducted Emission	FCC 47 CFR Part 15.107	ANSI C63.4-2014	PASS
Radiated Emission	FCC 47 CFR Part 15.109	ANSI C63.4-2014	PASS

Note:
1) N/A: In this whole report not application.



3. EQUIPMENT LIST

Radiated Emission Test Equipment List						
Used	Equipment	Manufacturer	Model No.	Serial Number	Cal. date (mm dd, yyyy)	Cal. Due date (mm dd, yyyy)
<input checked="" type="checkbox"/>	3M Chamber & Accessory Equipment	ETS-LINDGREN	3M	N/A	Dec. 20, 2015	Dec. 19, 2018
<input checked="" type="checkbox"/>	Receiver	R&S	ESIB26	100114	Dec. 22, 2016	Dec. 22, 2017
<input type="checkbox"/>	Loop Antenna	ETS-LINDGREN	6502	00202525	Jun. 24, 2015	Jun. 23, 2018
<input checked="" type="checkbox"/>	Broadband Antenna	ETS-LINDGREN	3142E	00201566	Jul. 24, 2015	Jul. 23, 2018
<input checked="" type="checkbox"/>	Preamplifier	HP	8447F	2805A02960	Dec. 22, 2016	Dec. 22, 2017
<input checked="" type="checkbox"/>	Broadband Antenna (Pre-amplifier)	ETS-LINDGREN	3142E-PA	00201891	Dec. 30, 2016	Dec. 30, 2017
<input type="checkbox"/>	Horn Antenna	ETS-LINDGREN	3117	00164202	Jul. 24, 2015	Jul. 23, 2018
<input checked="" type="checkbox"/>	Horn Antenna (Pre-amplifier)	ETS-LINDGREN	3117-PA	00201874	Dec. 30, 2016	Dec. 30, 2017
<input checked="" type="checkbox"/>	Multi device Controller	ETS-LINDGREN	7006-001	00160105	N/A	N/A
<input checked="" type="checkbox"/>	Test Software	Audix	e3	Software Version: 9.160323		

Conducted Emission Test Equipment List						
Used	Equipment	Manufacturer	Model No.	Serial Number	Cal. date (mm dd, yyyy)	Cal. Due date (mm dd, yyyy)
<input checked="" type="checkbox"/>	Receiver	R&S	ESR7	1316.3003K07-101181-K3	Dec. 22, 2016	Dec. 22, 2017
<input checked="" type="checkbox"/>	Pulse Limiter	R&S	ESH3-Z2	0357.8810.54	Dec. 22, 2016	Dec. 22, 2017
<input checked="" type="checkbox"/>	LISN	R&S	ESH2-Z5	860014/024	Dec. 22, 2016	Dec. 22, 2017
<input checked="" type="checkbox"/>	Test Software	Audix	e3	Software Version: 9.160323		

4. TEST CONFIGURATION

4.1 ENVIRONMENTAL CONDITIONS FOR TESTING

4.1.1 Normal or Extreme Test Conditions

Environment Parameter	Selected Values During Tests		
Test Condition	Ambient		
	Temperature (°C)	Voltage	Relative Humidity (%)
NT/NV	+15 to +35	120Vac and/or 3.7Vdc	20 to 75
Remark:			
1) NV: Normal Voltage; NT: Normal Temperature			

4.1.2 Record of Normal Environment

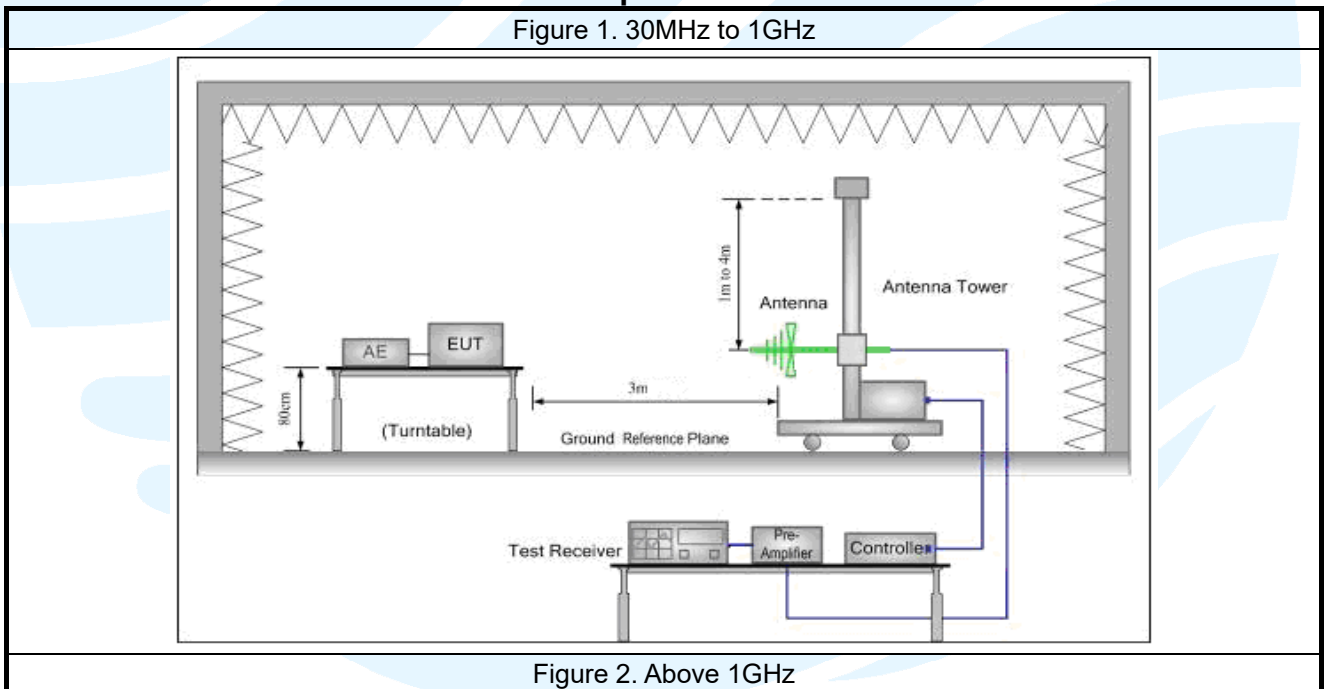
Test Item	Temperature (°C)	Relative Humidity (%)	Pressure (Kpa)	Tested by
Radiated Emission	25.9	65	99.36	Terence Chen
Conducted Emission	26.8	46	100.02	Andy Lin

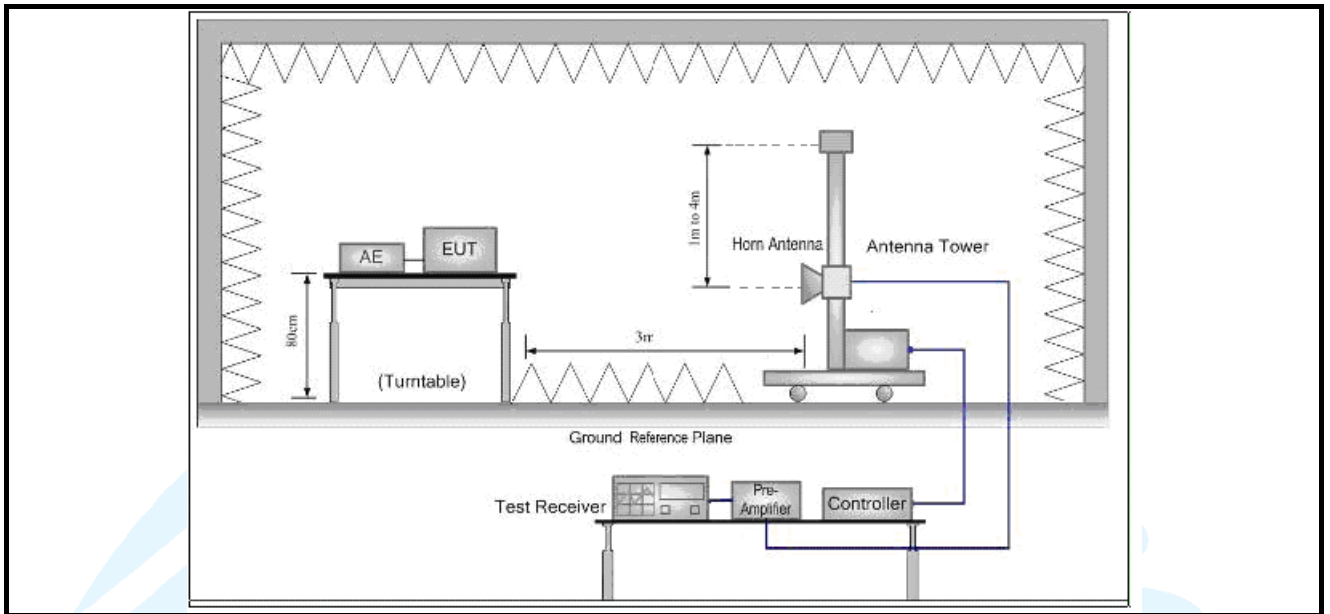
4.2 TEST MODES

Test Item	EMI Test Modes
Radiated Emission	Mode 1: Charging

4.3 TEST SETUP

4.3.1 For Radiated Emissions test setup





4.4 SYSTEM TEST CONFIGURATION

All readings are extrapolated back to the equivalent three meter reading using inverse scaling with distance. Analyzer resolution is 100 kHz or greater for frequencies below 1000MHz. The resolution is 1 MHz or greater for frequencies above 1000MHz. The spurious emissions more than 20 dB below the permissible value are not reported.

Radiated emission measurement were performed from the lowest radio frequency signal generated in the device which is greater than 9 kHz to the fifth harmonic of the highest fundamental frequency or to 40 GHz, whichever is lower.

5. REFERENCE DOCUMENTS FOR TESTING

No.	Identity	Document Title
1	FCC 47 CFR Part15 Subpart B	Unintentional Radiators
2	ANSI C63.4-2014	American National Standard for Methods of Measurement of Radio-Noise Emissions from Low-Voltage Electrical and Electronic Equipment in the Range of 9 kHz to 40 GHz

6. EMC REQUIREMENTS SPECIFICATION

6.1 RADIATED EMISSION

Test Requirement: FCC 47 CFR Part 15.109

Test Method: ANSI C63.4-2014

Receiver Setup:

Frequency: (f) (MHz)	Detector type	Measurement receiver bandwidth	
		RBW	VBW
$30 \leq f \leq 1\,000$	Quasi Peak	120 kHz	300 kHz
$f \geq 1000$	Peak	1 MHz	3 MHz
	Average	1 MHz	3 MHz

Measured frequency range

Highest frequency generated or used in the device or on which the device operates or tunes (MHz)	Upper frequency of measurement range (MHz)
Below 1.705	30.
1.705-108	1000.
108-500	2000.
500-1000	5000.
Above 1000	5th harmonic of the highest frequency or 40 GHz, whichever is lower.

Limits:

Limits for Class B devices

Frequency (MHz)	limits at 3m (dB μ V/m)		
	QP Detector	PK Detector	AV Detector
30-88	40.0	--	--
88-216	43.5	--	--
216-960	46.0	--	--
960 to 1000	54.0	--	--
Above 1000	--	74.0	54.0

Remark:

- The lower limit shall apply at the transition frequencies.
- Emission level (dB μ V/m) = 20 log Emission level (μ V/m).
- For frequencies above 1000 MHz, the field strength limits are based on average detector, however, the peak field strength of any emission shall not exceed the maximum permitted average limits, specified above by more than 20 dB under any condition of modulation.

Test Setup: Refer to section 4.3.1 for details.

Test Procedures:

- From 30 MHz to 1GHz test procedure as below:
 - The Product was placed on the non-conductive turntable 0.8 m above the ground at a chamber.
 - Set the spectrum analyzer/receiver in Peak detector, Max Hold mode, and 120 kHz RBW. Record the maximum field strength of all the pre-scan process in the full band when the antenna is varied between 1~4 m in both horizontal and vertical, and the turntable is rotated from 0 to 360 degrees.

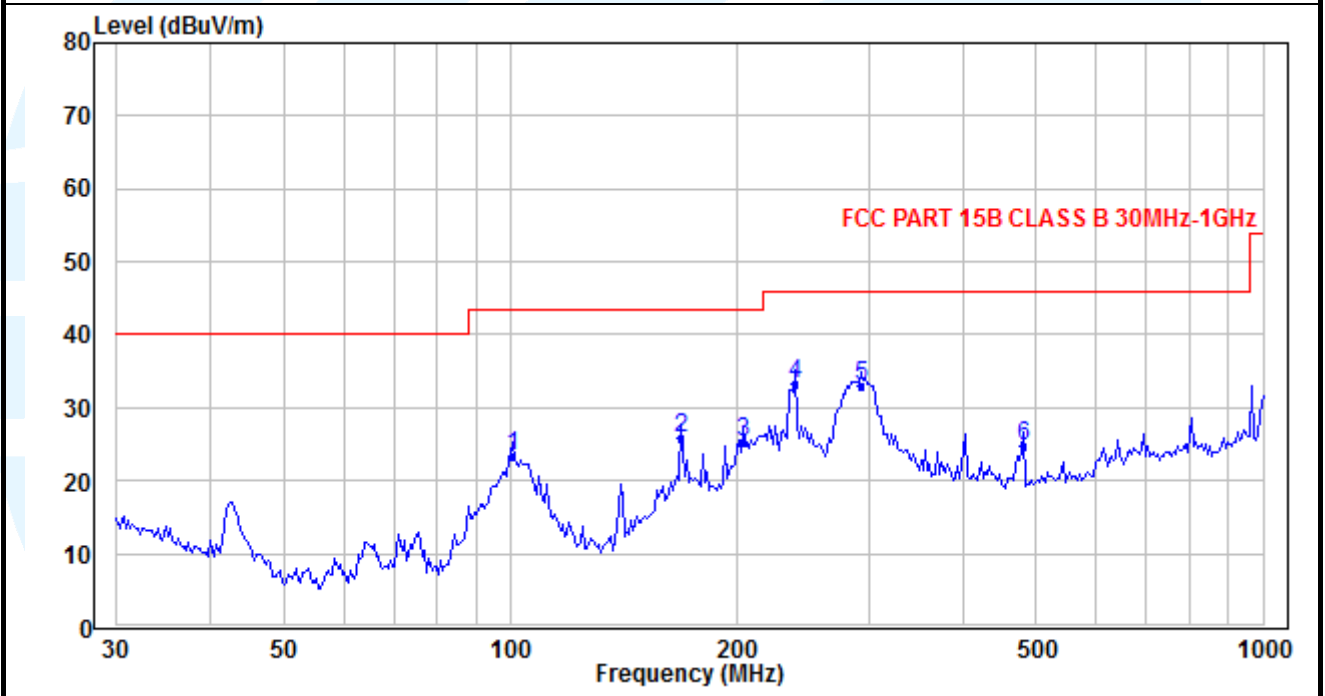
- 3) For each frequency whose maximum record was higher or close to limit, measure its QP value: vary the antenna's height and rotate the turntable from 0 to 360 degrees to find the height and degree where Product radiated the maximum emission, then set the test frequency analyzer/receiver to QP Detector and specified bandwidth with Maximum Hold Mode, and record the maximum value.
2. Above 1GHz test procedure as below:
- 1) The Product was placed on the non-conductive turntable 0.8 m above the ground at a chamber.
 - 2) Set the spectrum analyzer/receiver in Peak detector, Max Hold mode, and 1MHz RBW. Record the maximum field strength of all the pre-scan process in the full band when the antenna is varied in both horizontal and vertical, and the turntable is rotated from 0 to 360 degrees.
 - 3) For each frequency whose maximum record was higher or close to limit, measure its AV value: rotate the turntable from 0 to 360 degrees to find the degree where Product radiated the maximum emission, then set the test frequency analyzer/receiver to AV value and specified bandwidth with Maximum Hold Mode, and record the maximum value.

Equipment Used: Refer to section 3 for details.

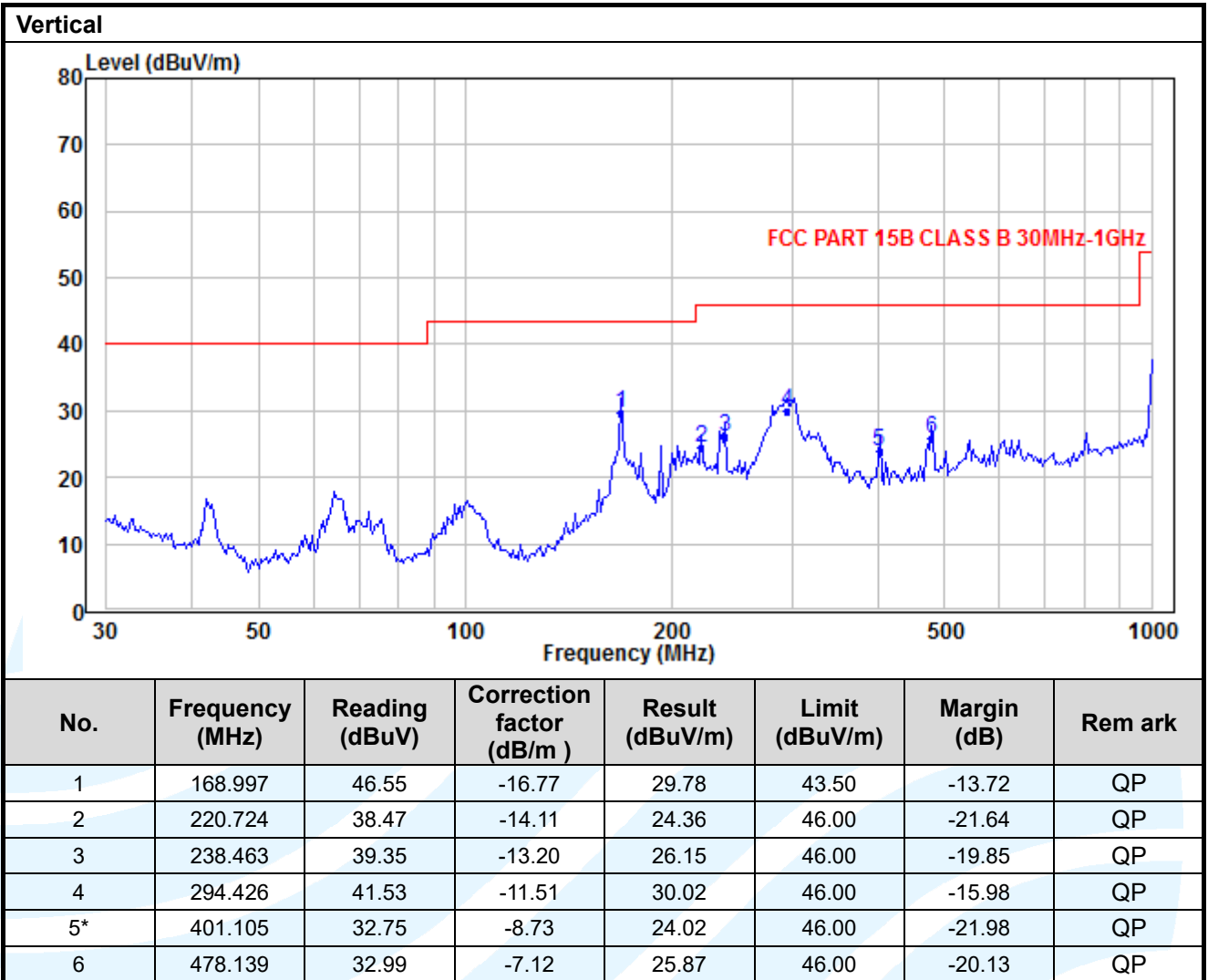
Test Result: Pass

The measurement data as follows:

Below 1GHz(Quasi Peak):
Mode1
Horizontal



No.	Frequency (MHz)	Reading (dBuV)	Correction factor (dB/m)	Result (dBuV/m)	Limit (dBuV/m)	Margin (dB)	Rem ark
1	100.471	41.27	-17.95	23.32	43.50	-20.18	Qp
2	168.997	42.16	-16.45	25.71	43.50	-17.79	Qp
3	204.305	40.58	-15.30	25.28	43.50	-18.22	Qp
4	238.463	46.59	-13.33	33.26	46.00	-12.74	Qp
5	292.364	44.38	-11.40	32.98	46.00	-13.02	Qp
6*	481.511	32.11	-7.37	24.74	46.00	-21.26	Qp



Above 1GHz(Peak & Average)

The amplitude of spurious emissions attenuated more than 20 dB below the permissible value is not required to be report.

6.2 CONDUCTED EMISSION

Test Requirement: FCC 47 CFR Part 15.107

Test Method: ANSI C63.4-2014

Limits:

Limits for Class B devices

Frequency range (MHz)	Limits (dB(μV))	
	Quasi-peak	Average
0,15 to 0,50	66 to 56	56 to 46
0,50 to 5	56	46
5 to 30	60	50

Remark:

1. The lower limit shall apply at the transition frequencies.
2. The limit decreases linearly with the logarithm of the frequency in the range 0.15 to 0.50 MHz.

Test Setup: Refer to section 4.3.2 for details.

Test Procedures:

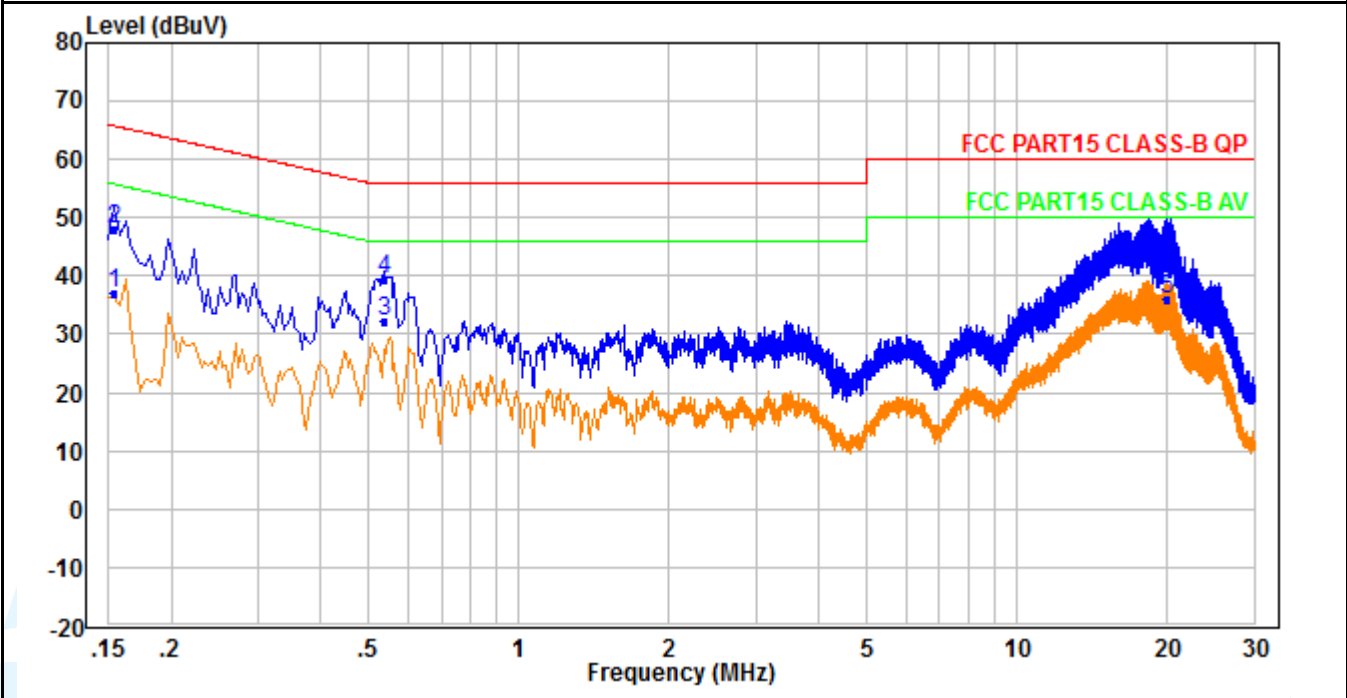
- 1) The Product was placed on a nonconductive table 0.8 m above the horizontal ground reference plane, and 0.4 m from the vertical ground reference plane, and connected to the main through Line Impedance Stability Network (L.I.S.N).
- 2) The RBW of the receiver was set at 9 kHz in 150 kHz ~ 30MHz with Peak and AVG detector in Max Hold mode. Run the receiver's pre-scan to record the maximum disturbance generated from Product in all power lines in the full band.
- 3) For each frequency whose maximum record was higher or close to limit, measure its QP and AVG values and record.

Equipment Used: Refer to section 3 for details.

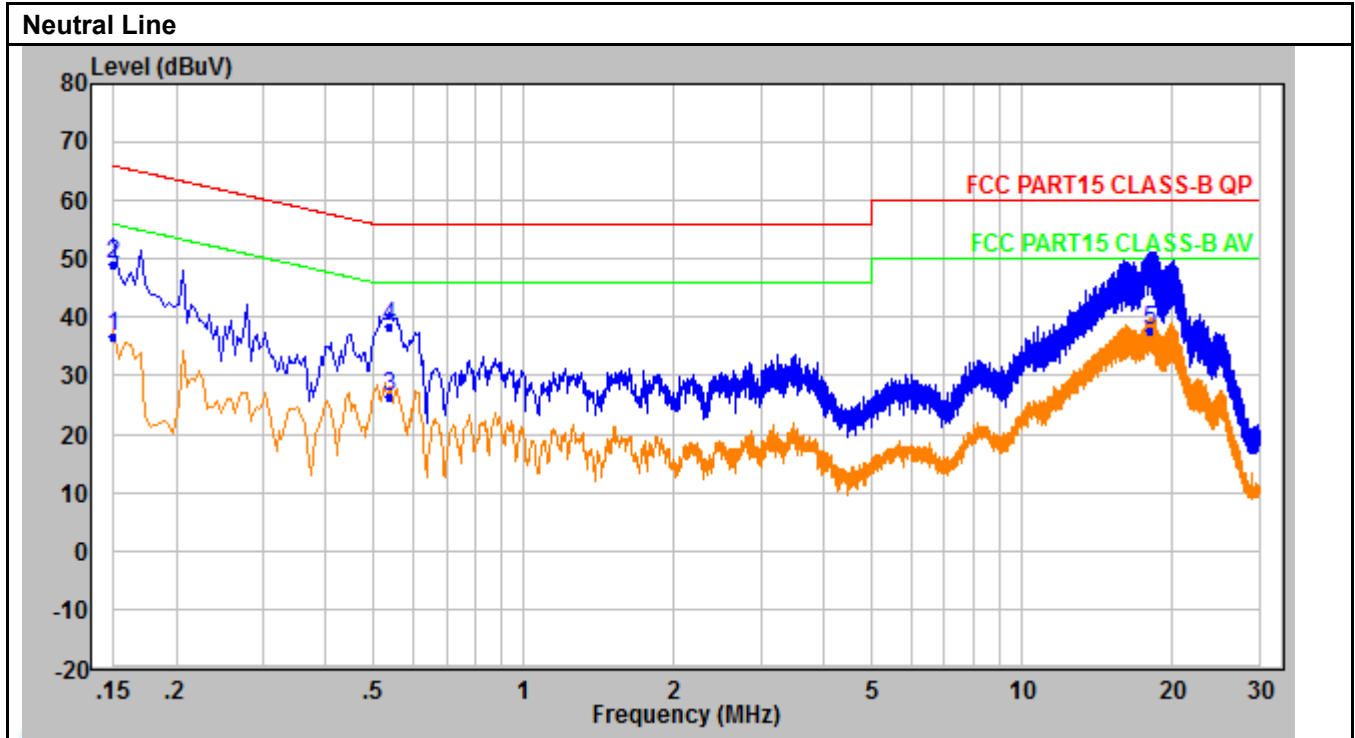
Test Result: Pass

The measurement data as follows:
 Quasi Peak and Average:
 Mode 1

Live Line



No.	Frequency (MHz)	Reading (dBuV)	Correction factor (dB/m)	Result (dBuV/m)	Limit (dBuV/m)	Margin (dB)	Remark
1*	0.154	26.70	10.20	36.90	55.80	-18.90	Average
2	0.154	37.70	10.20	47.90	65.80	-17.90	QP
3	0.534	22.10	10.20	32.30	46.00	-13.70	Average
4	0.534	29.30	10.20	39.50	56.00	-16.50	QP
5	20.133	23.00	12.90	35.90	50.00	-14.10	Average
6	20.133	31.10	12.90	44.00	60.00	-16.00	QP

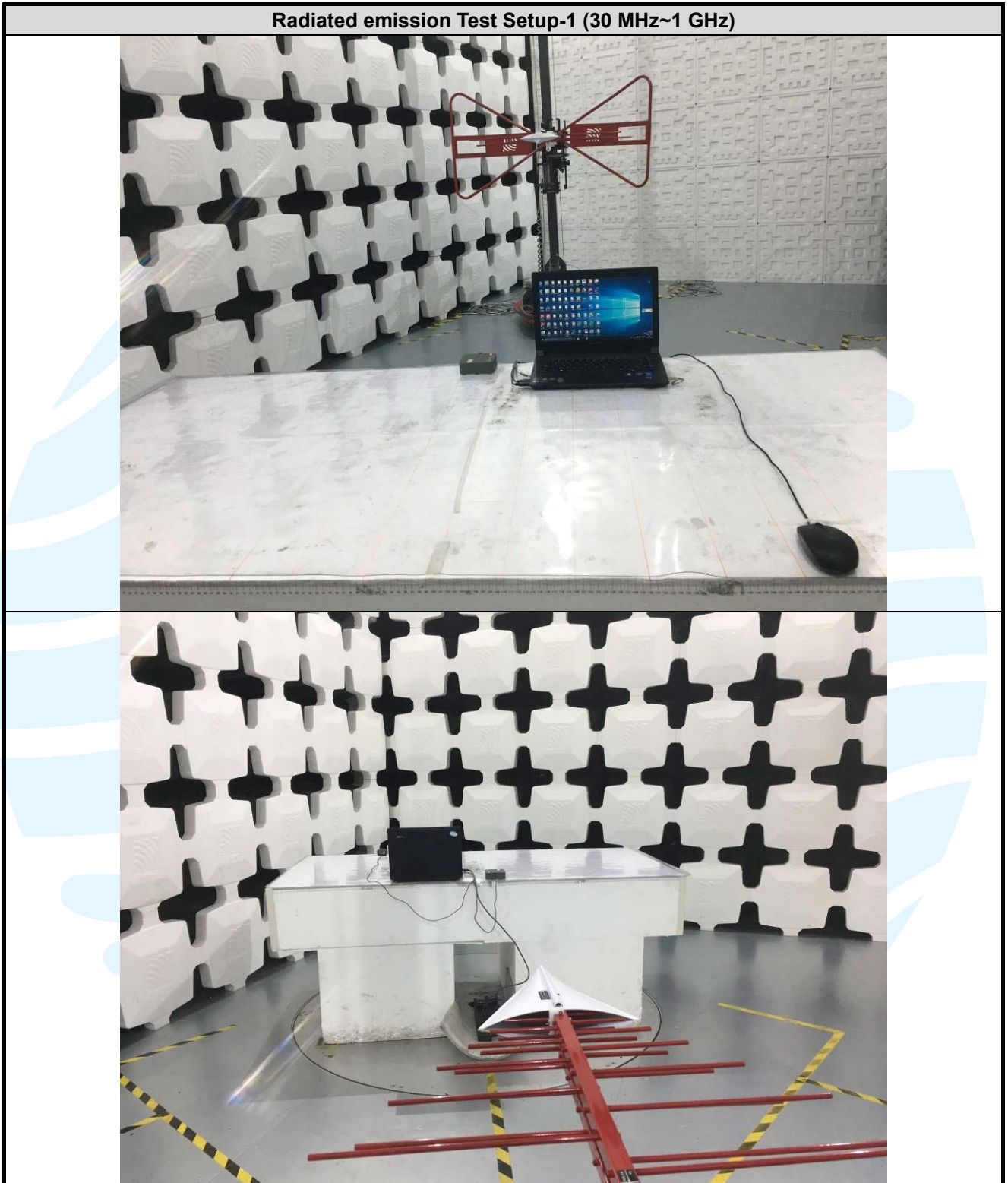


No.	Frequency (MHz)	Reading (dBUV)	Correction factor (dB/m)	Result (dBUV/m)	Limit (dBUV/m)	Margin (dB)	Remark
1	0.150	26.50	10.20	36.70	56.00	-19.30	Average
2	0.150	38.80	10.20	49.00	66.00	-17.00	QP
3*	0.534	16.00	10.40	26.40	46.00	-19.60	Average
4	0.534	28.10	10.40	38.50	56.00	-17.50	QP
5	18.041	25.20	12.60	37.80	50.00	-12.20	Average
6	18.041	33.90	12.60	46.50	60.00	-13.50	QP

Remark:

1. An initial pre-scan was performed on the Phase and neutral lines with peak detector. Quasi-Peak and Average measurement were performed at the frequencies with maximized peak emission were detected.

APPENDIX 1 PHOTOS OF TEST SETUP

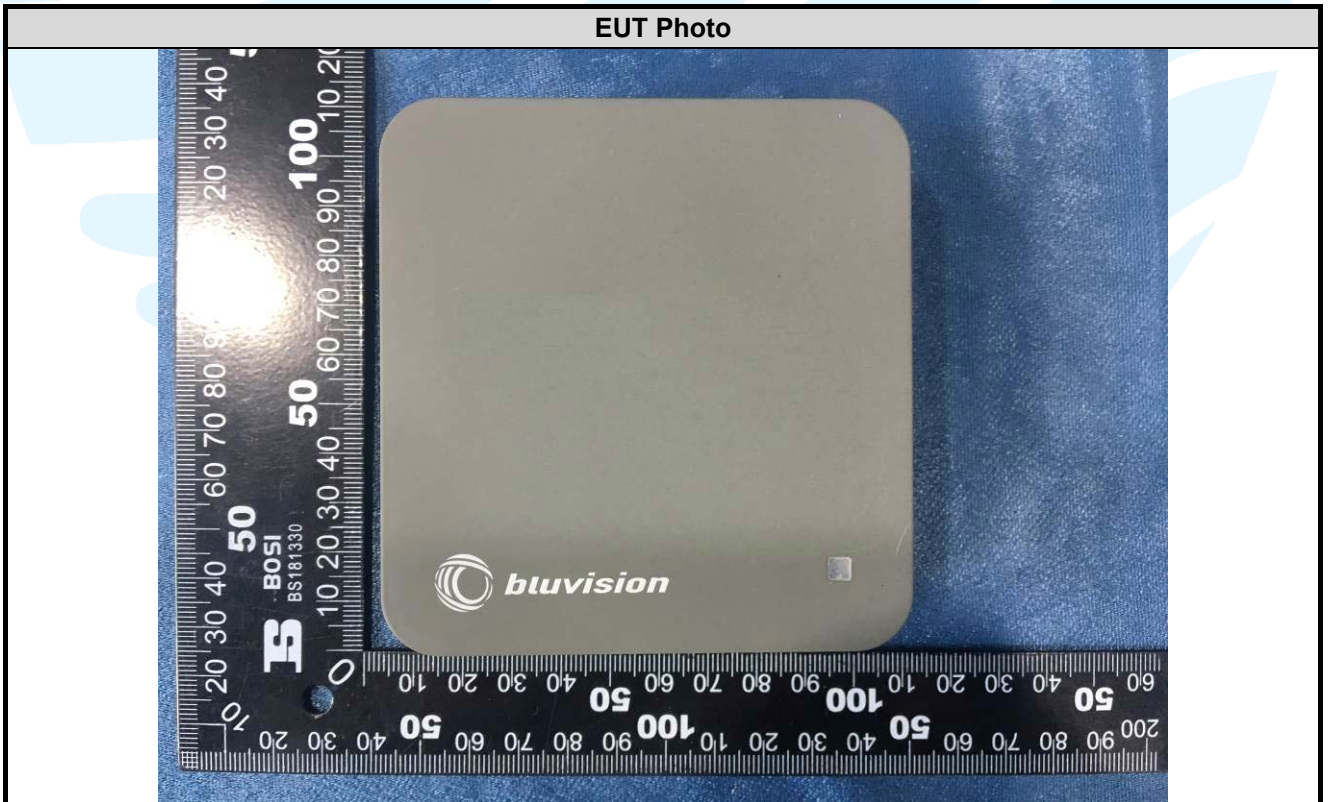


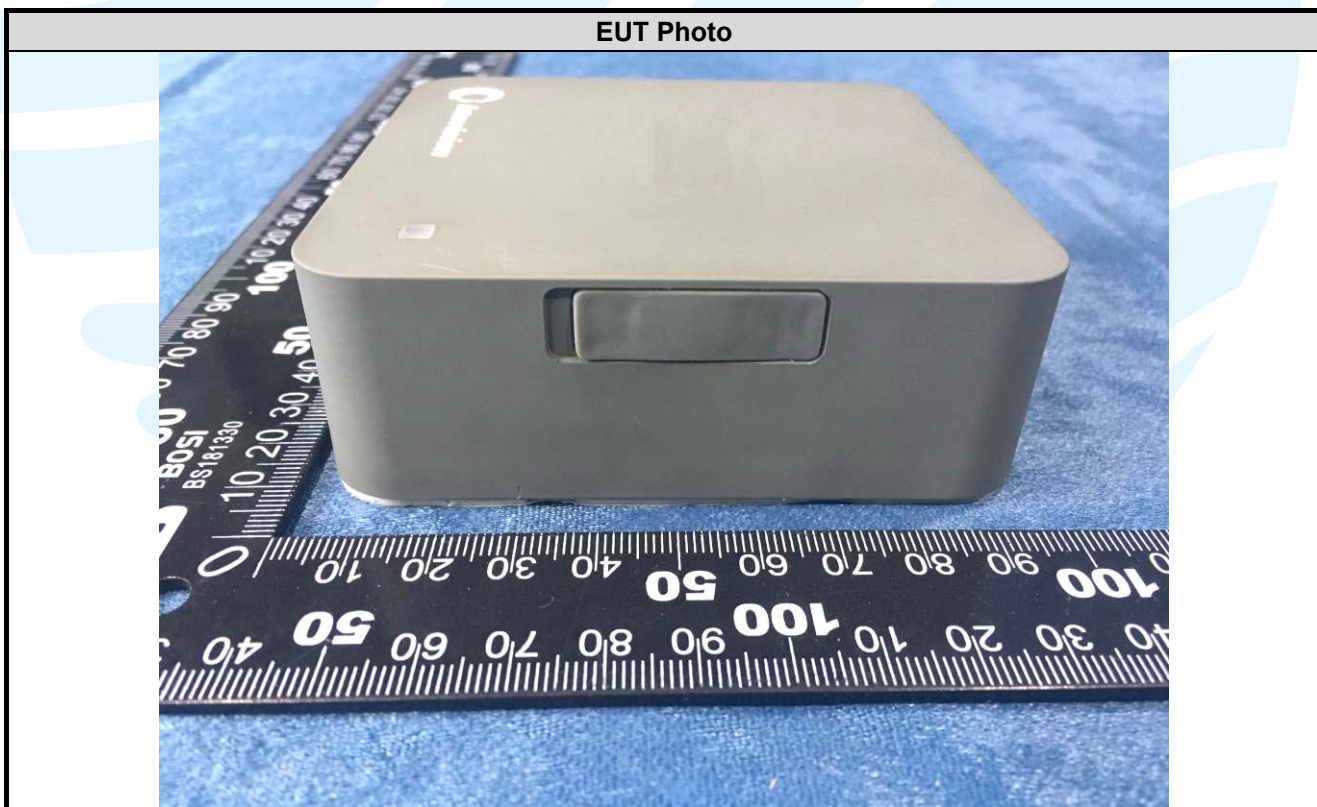
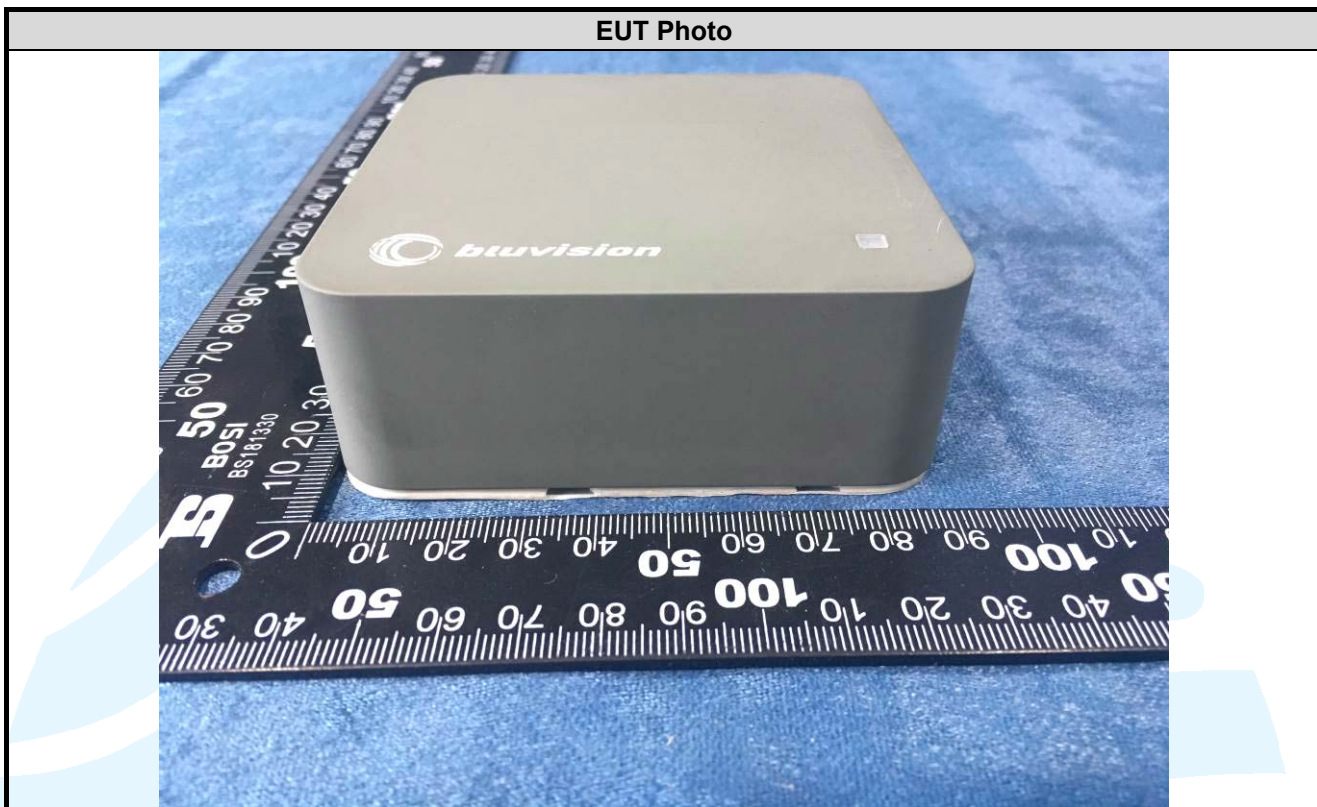
Conducted Emission Test Setup

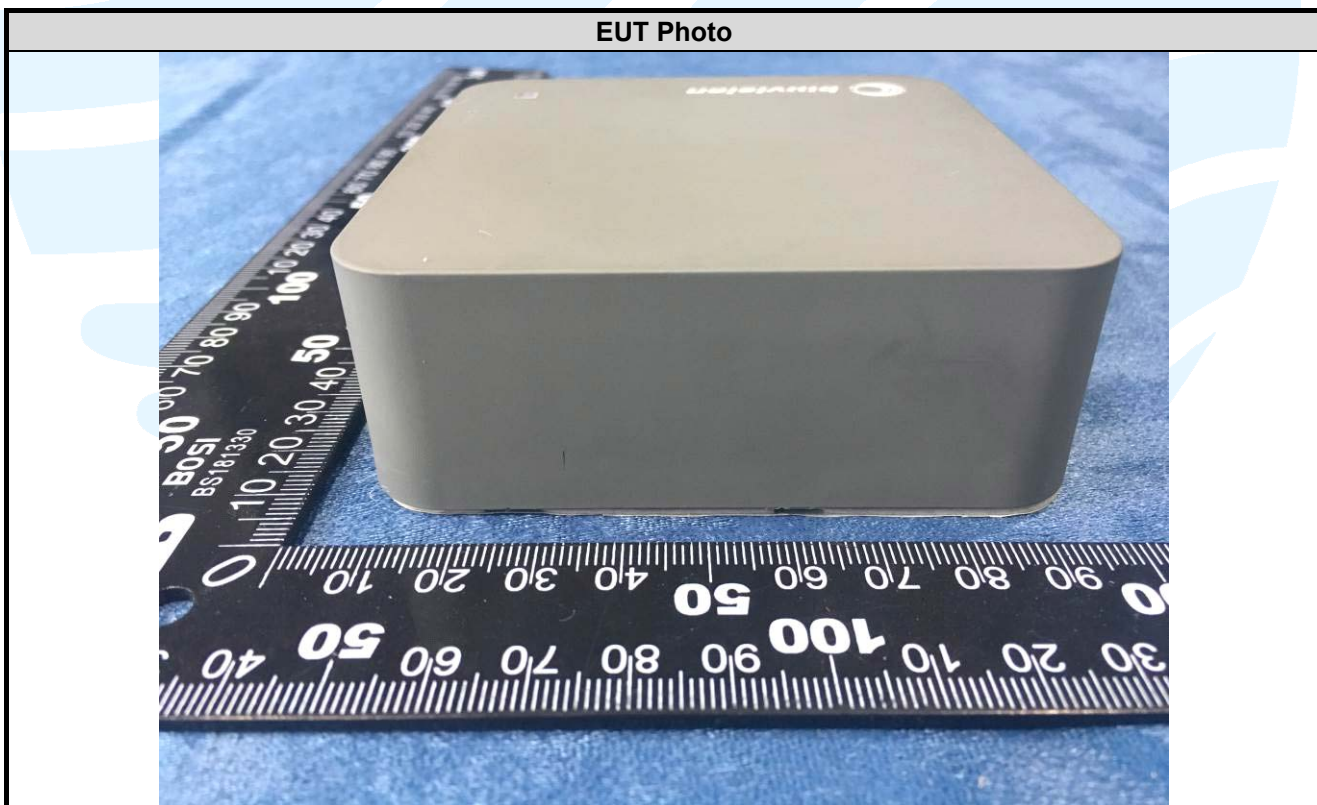


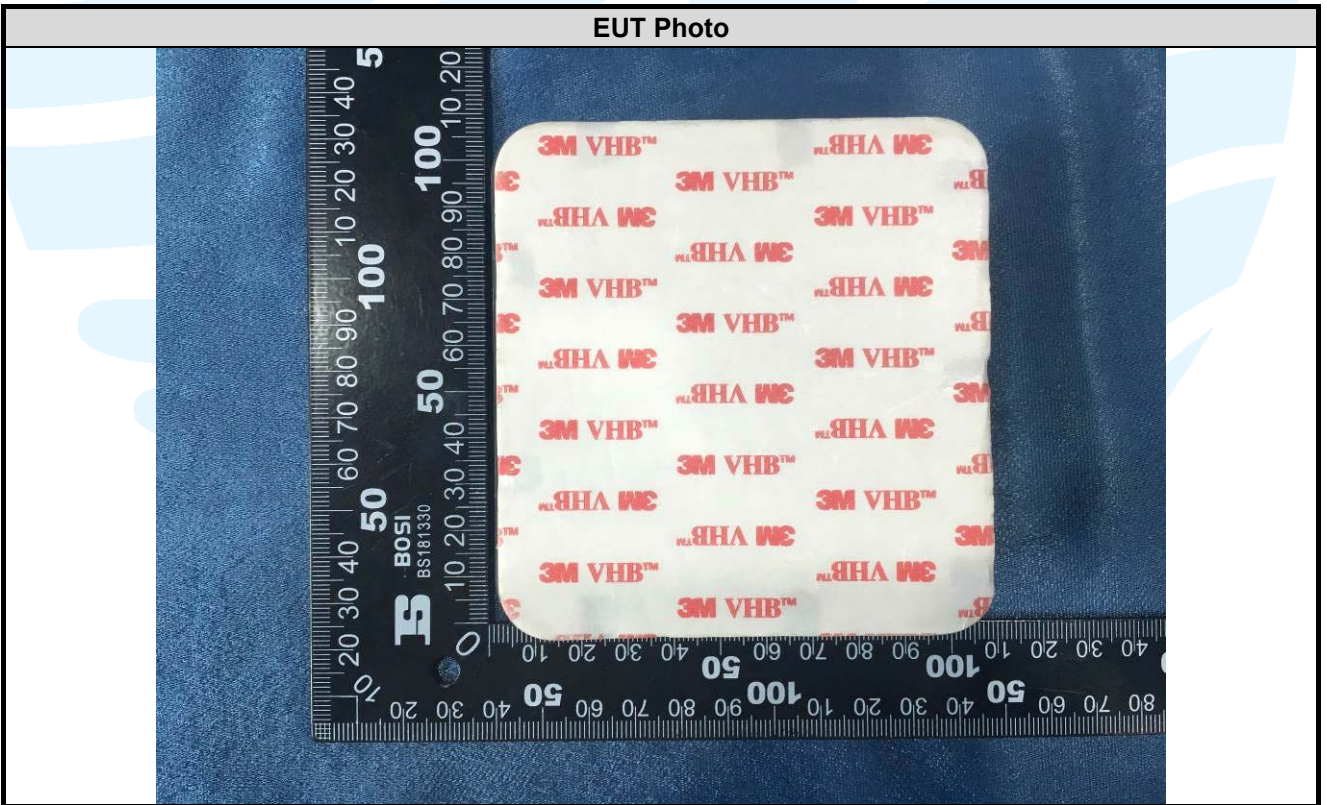
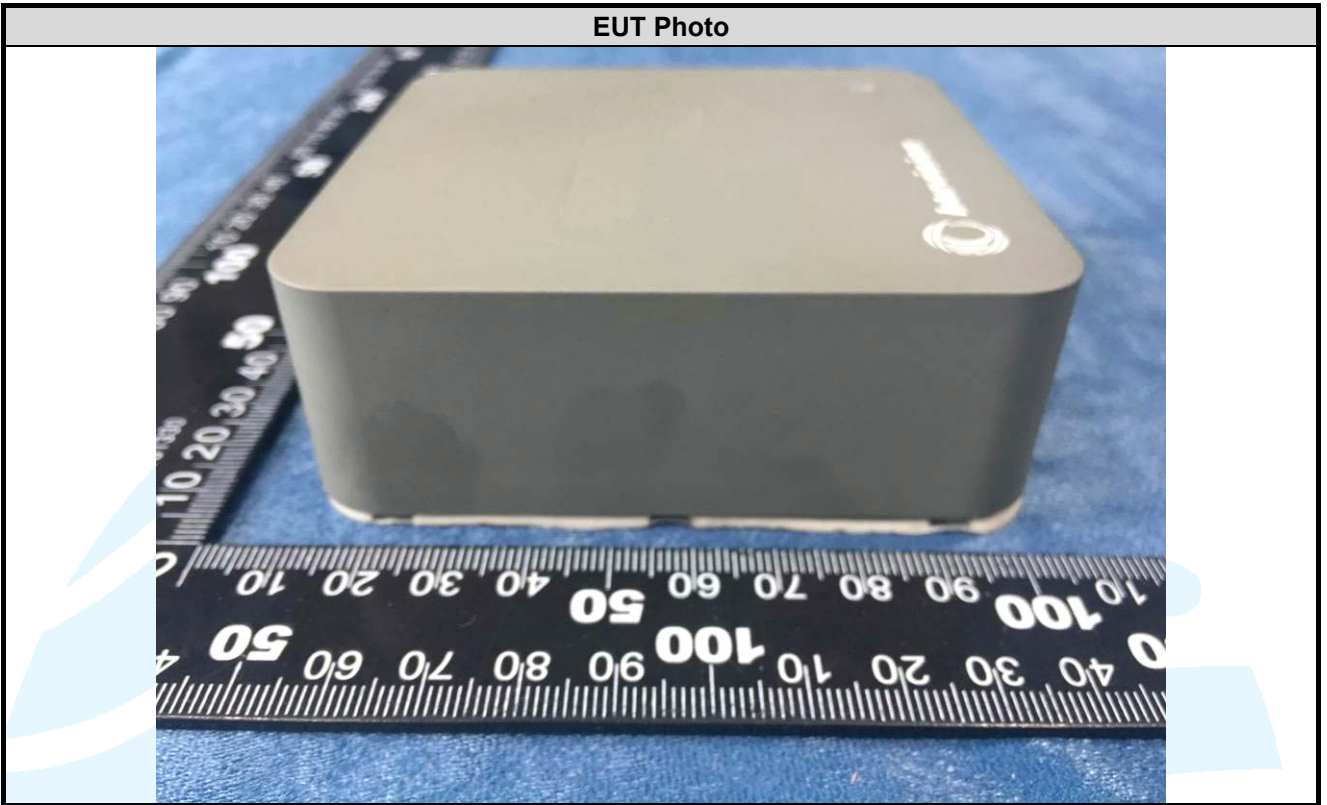
APPENDIX 2 PHOTOS OF EUT CONSTRUCTIONAL DETAILS

EUT EXTERNAL PHOTOS

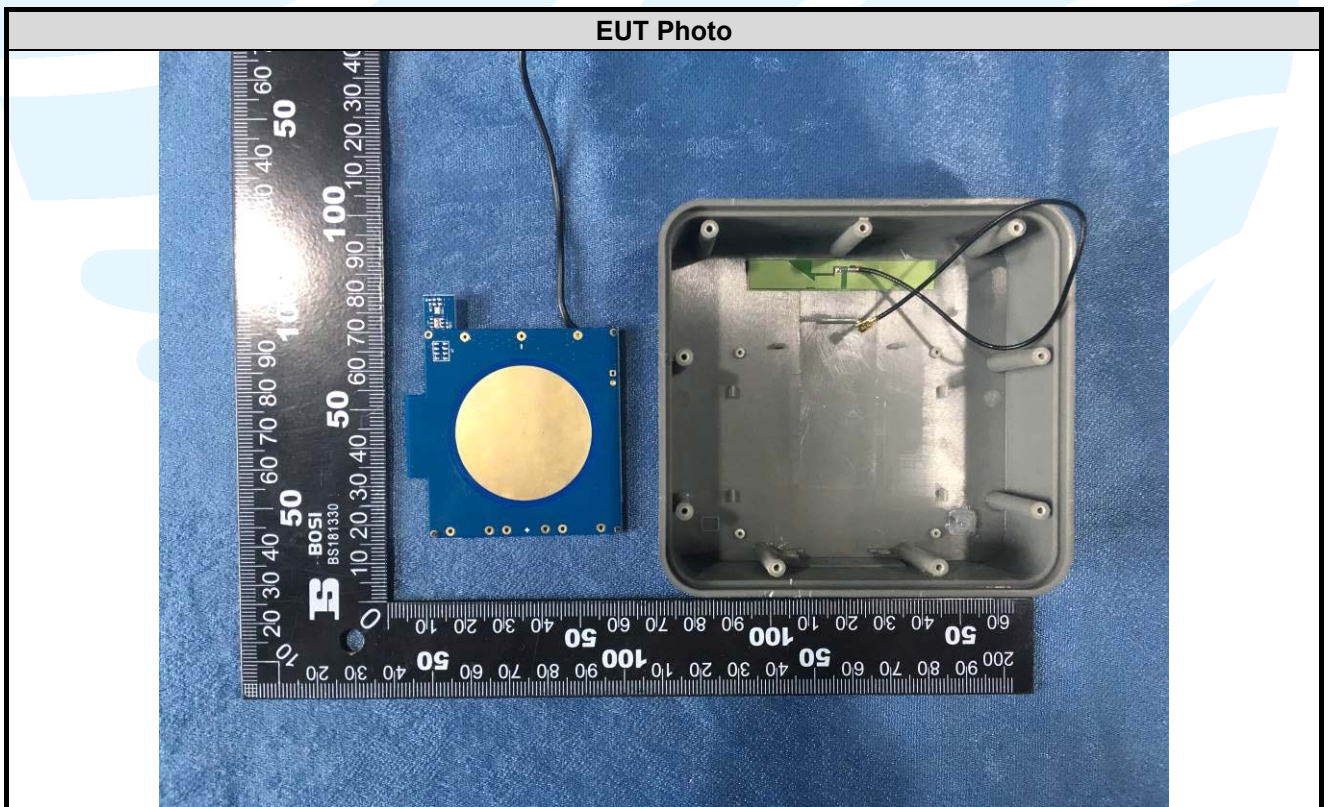
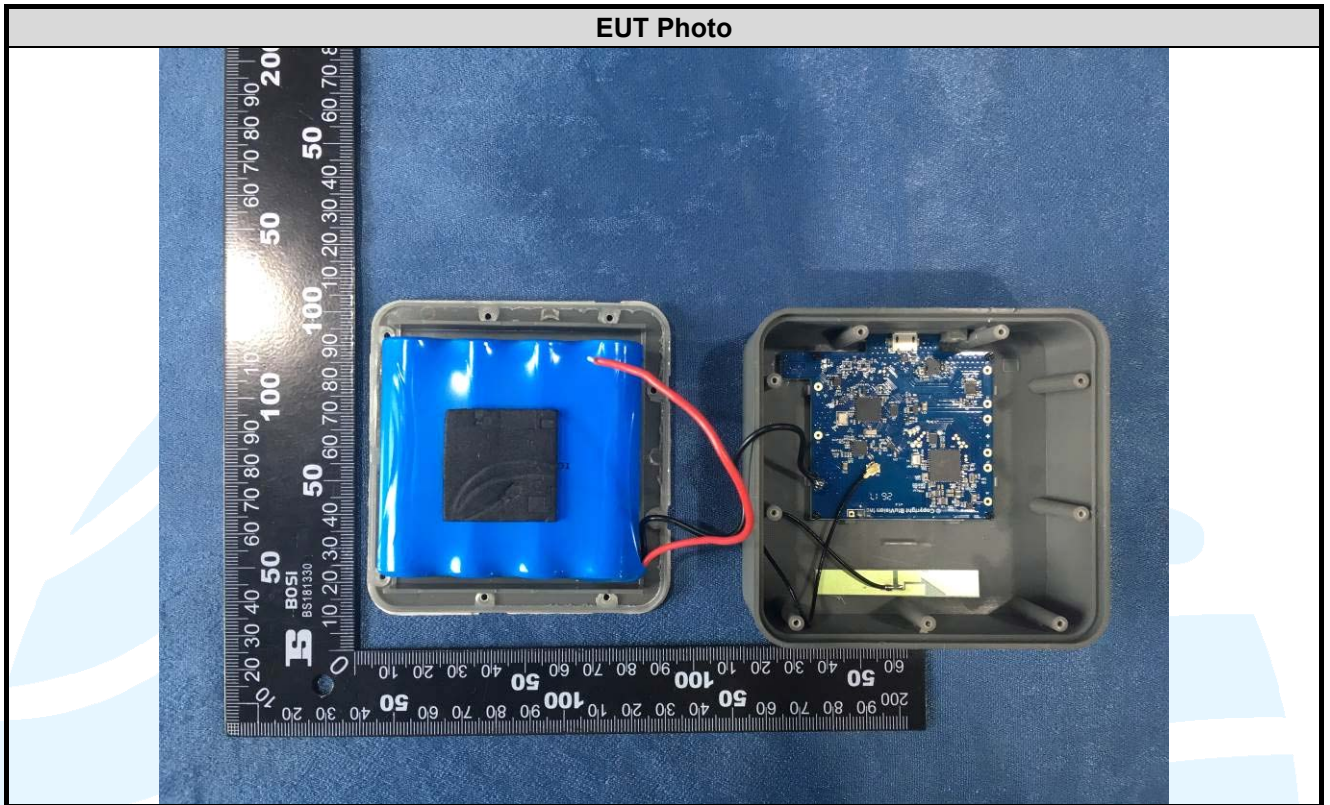


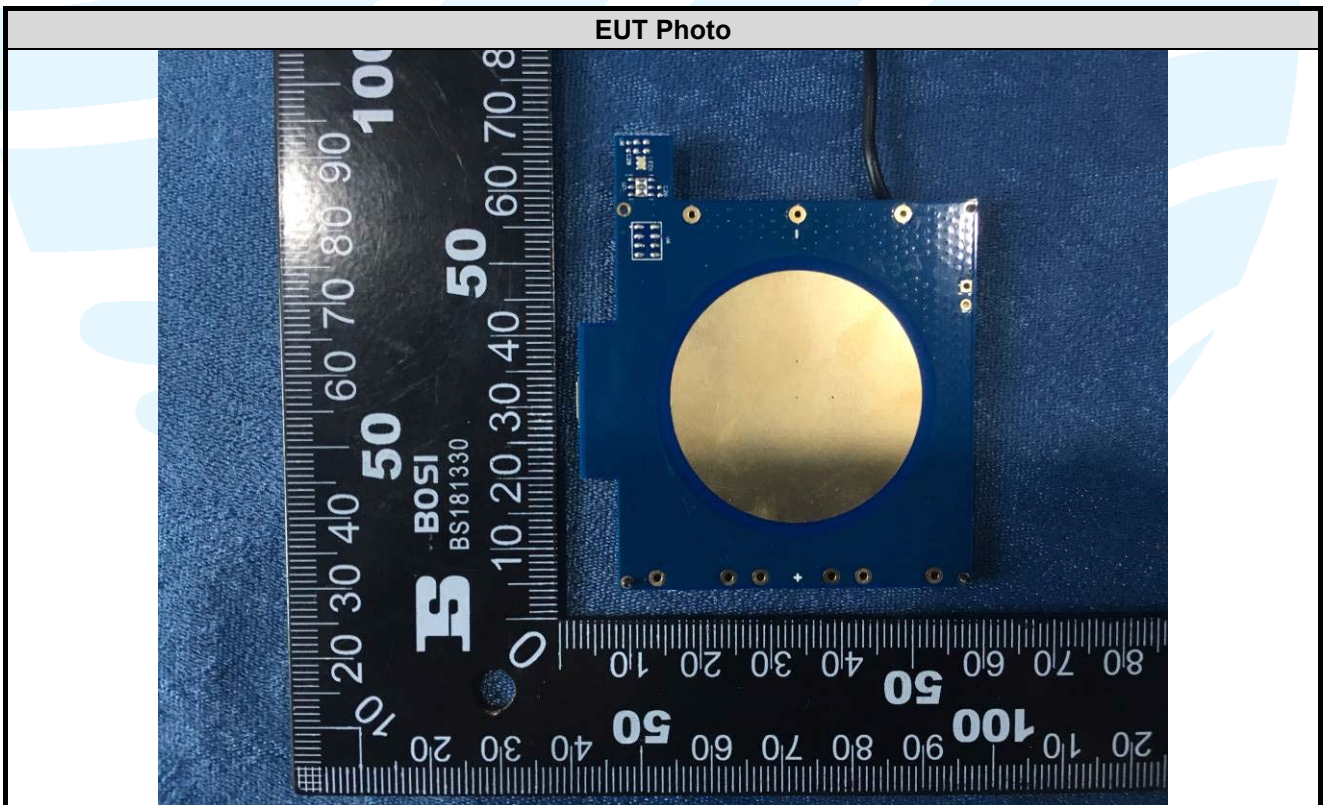
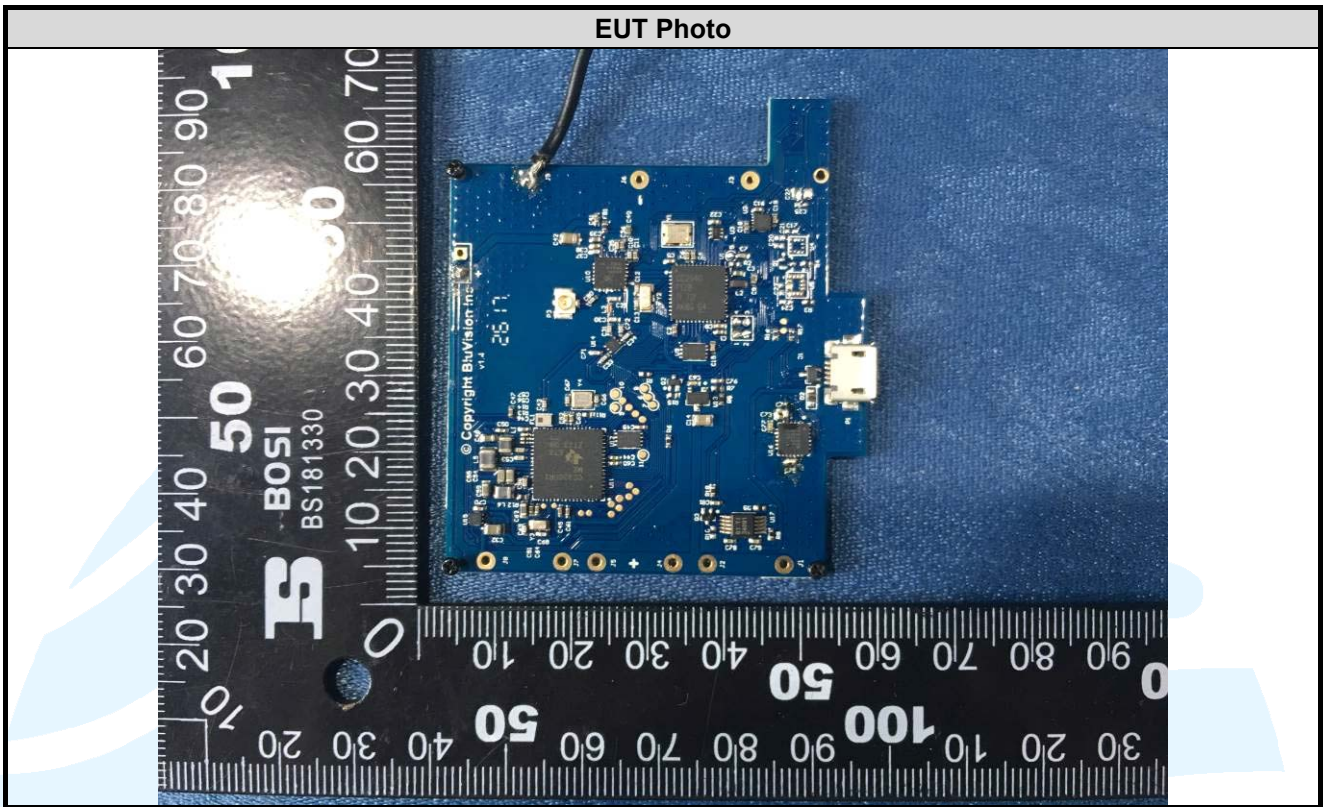






EUT INTERNAL PHOTOS





***** End of Report *****

The test report is effective only with both signature and specialized stamp. The result(s) shown in this report refer only to the sample(s) tested. Without written approval of UnionTrust, this report can't be reproduced except in full.

