

WLAN CF Card

Introduction

Thank you for purchasing the Wireless Local Area Network (WLAN) Compact Flash (CF) Card. This card is designed to comply with IEEE 802.11b Wireless LAN standard and easy to carry with the compact size. It can be easily used with PDA or Handheld devices. It supports windows OS Plug & Play installation and USB Hot Swap, Allowing you plug in or remove it without reboot your computer. It is ideally suitable for being integrated into the personal Mobile and Handheld Platform.

Product Kit

Before installation, make sure that you have the following items:

- WLAN CF Card
- Software CD containing User manual and driver
- Quick installation guide

Please contact you local distributor or authorized reseller immediately for any missing or damaged components.

System Requirements

Before using your WLAN USB adaptor, please check that you have the following required items:

- Desktop/Notebook with CD-ROM drive
- Microsoft Windows 98ME/2000/XP.

Features

- Compact size design which is suitable for Handheld device with CF type I interface
- Complies with the IEEE 802.11b
- Radio Technology: Direct Sequence Spread Spectrum (DSSS)
- Data Rate: up to 11Mbps
- Build in 2 Chip Antenna
- Host Interface: Compact Flash Type I
- Frequency: 2.4 GHz
- Portable and compact size design

Specification

Description	2.4GHz Direct Sequence Spread Spectrum 802.11b 11Mbps WLAN CF Card
Model Name	WL0402 Series
Standard	IEEE 802.11b
Host Interface	Compact Flash (CF)
Physical Dimension	60 x 43x 7 mm (L x W x H)
Data Rate	11/5.5/2.1Mbps, Auto Rate
Operation Voltage	3.3 V
Frequency Range	2.4 GHz, Direct Sequence Spread Spectrum (DSSS)
Host OS	Windows 98ME/2000/XP
Data Security	64/128-bit WEP (Wired Equivalent Privacy) Encryption
Operating Channels	<ul style="list-style-type: none">● 1-11 United States (FCC)● 1-11 Canada (DOC)● 14 Japan (MKG)● 1-13 Europe (ETSI)
Modulation Technique	11Mbps(CCK)/5.5Mbps(CCK)/2Mbps(DQPSK)/1Mbps(DBPSK)
Transmit Power	Normal Temp. Range: 17dBm Extended Temp Range: 13dBm
Receive Sensitivity	11Mbps < -81dBm 5.5Mbps < -86dBm 2Mbps < -87dBm 1Mbps < -89dBm
Range Coverage	Open Space: 100m~400m Indoors: 30~100m

WLAN CF Card

Installation of WLAN CF Card

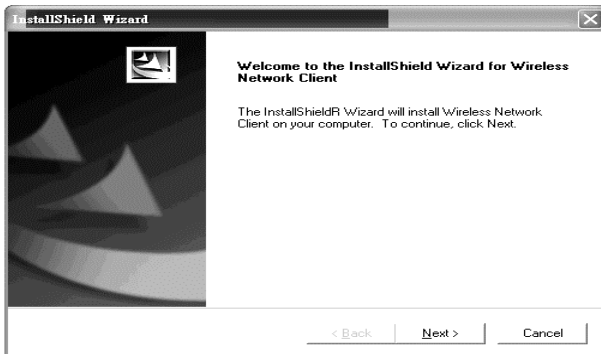
This is a quick step by step guide on how to install your WLAN CF Card. Please follow the steps described below and refer to the appropriate sections for further details:

- Power on the computer.
- Insert the provided CD into your CD-ROM drive and locate the executable file "Setup.exe"

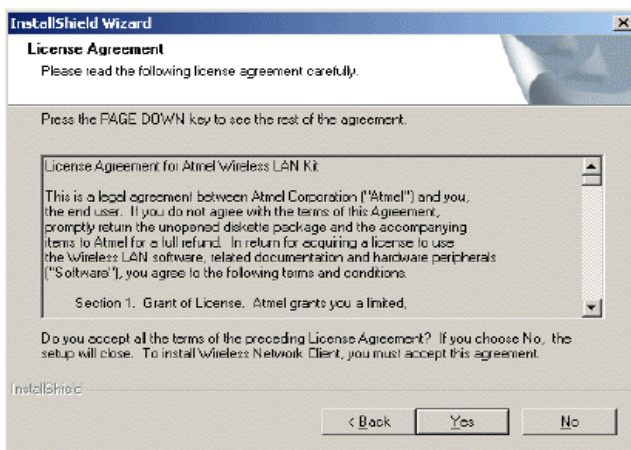


Setup.exe

- Follow the installation instructions from the Install Shield Wizard by pressing the "Next" button



- Next you should comply with the License Agreement.



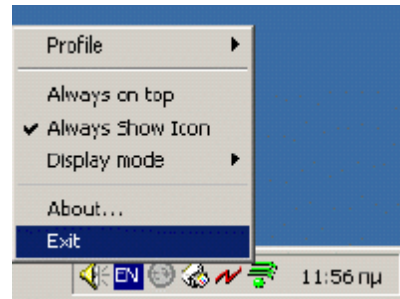
- After the License Agreement you can select the destination location for where the application will be installed, and the program folder for Windows, you can safely click the "Next" button to end the installation procedure.

- Uninstallation Procedure

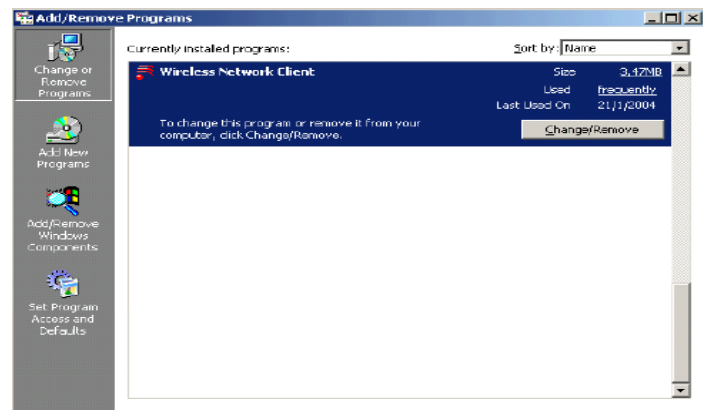
In order to uninstall the application when in

Windows follow the steps bellow:

1. First close the application prior starting the uninstallation procedure



2. Double click the "Add/Remove Program" button under the control Panel
3. Select the "Wireless Network Client" option and click the "Change/Remove" button



- In the next window that will appear make sure that the "Next" button in order to finish the removal of the Wireless Network Client (WNC).

FCC RF Radiation Exposure Statement
The equipment complies with FCC RF radiation exposure limits set forth for an uncontrolled environment. This device and its antenna must not be co-located or operating in conjunction with any other antenna or transmitter.

Changes or modifications not expressly approved by the party responsible for compliance could void the user's authority to operate the equipment.