

**FCC Part 15.247/15.249  
Transmitter Certification**

**Composite Device**

**Test Report**

**FCC ID: SK9AMI-1**

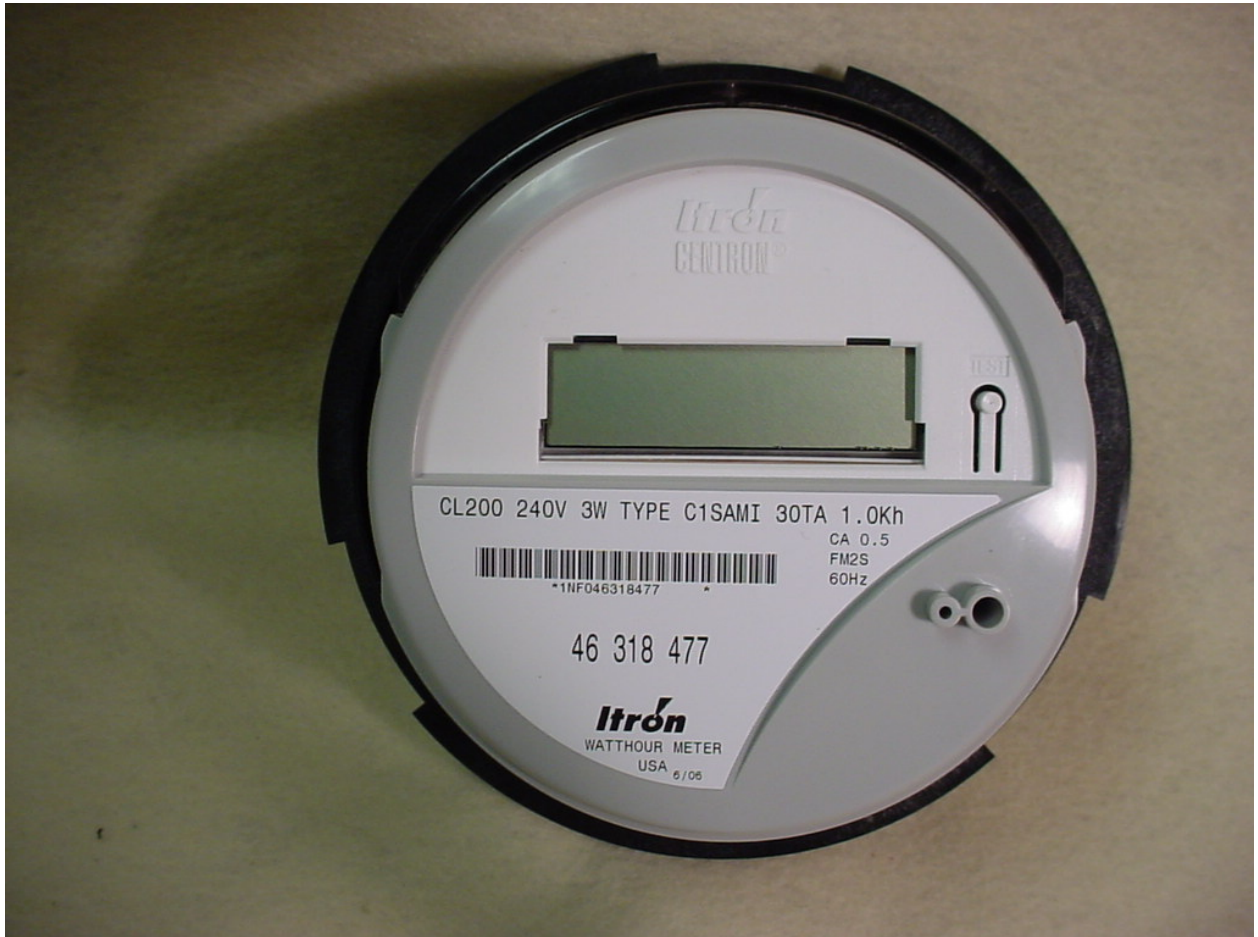
**FCC Rule Part: 15.247/15.249**

**ACS Report Number: 06-0239-15C-DSS, 06-0239-15C-DXX**

Manufacturer: Itron Electricity Metering Inc.  
Trade Name: CENTRON Open Way  
Model(s): CVSO, CVSOD, CVSOC

**Internal Photographs**

**Model: CVSO**



**Figure 1: Internal – Assembled View**

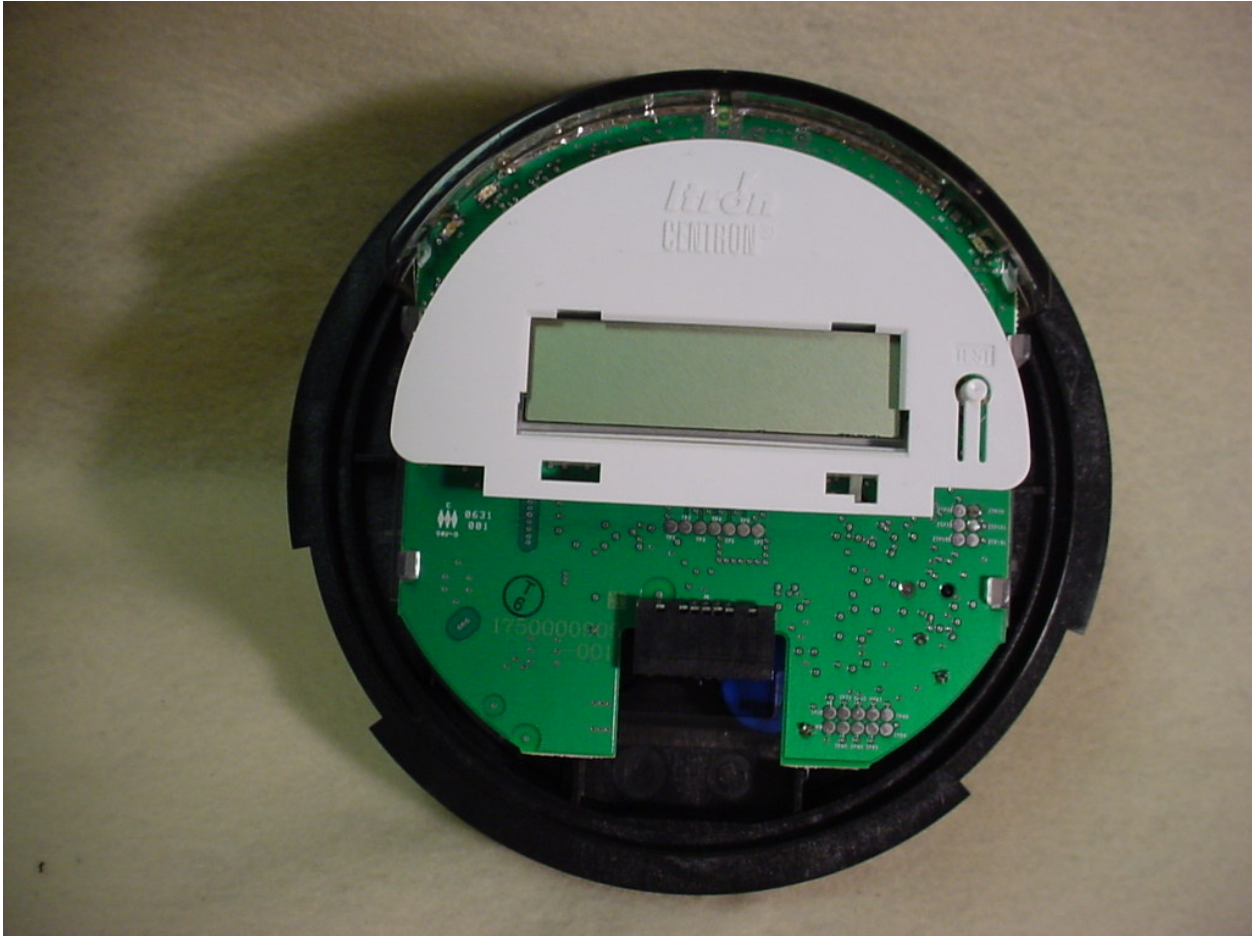


Figure 2: Internal – Assembled View

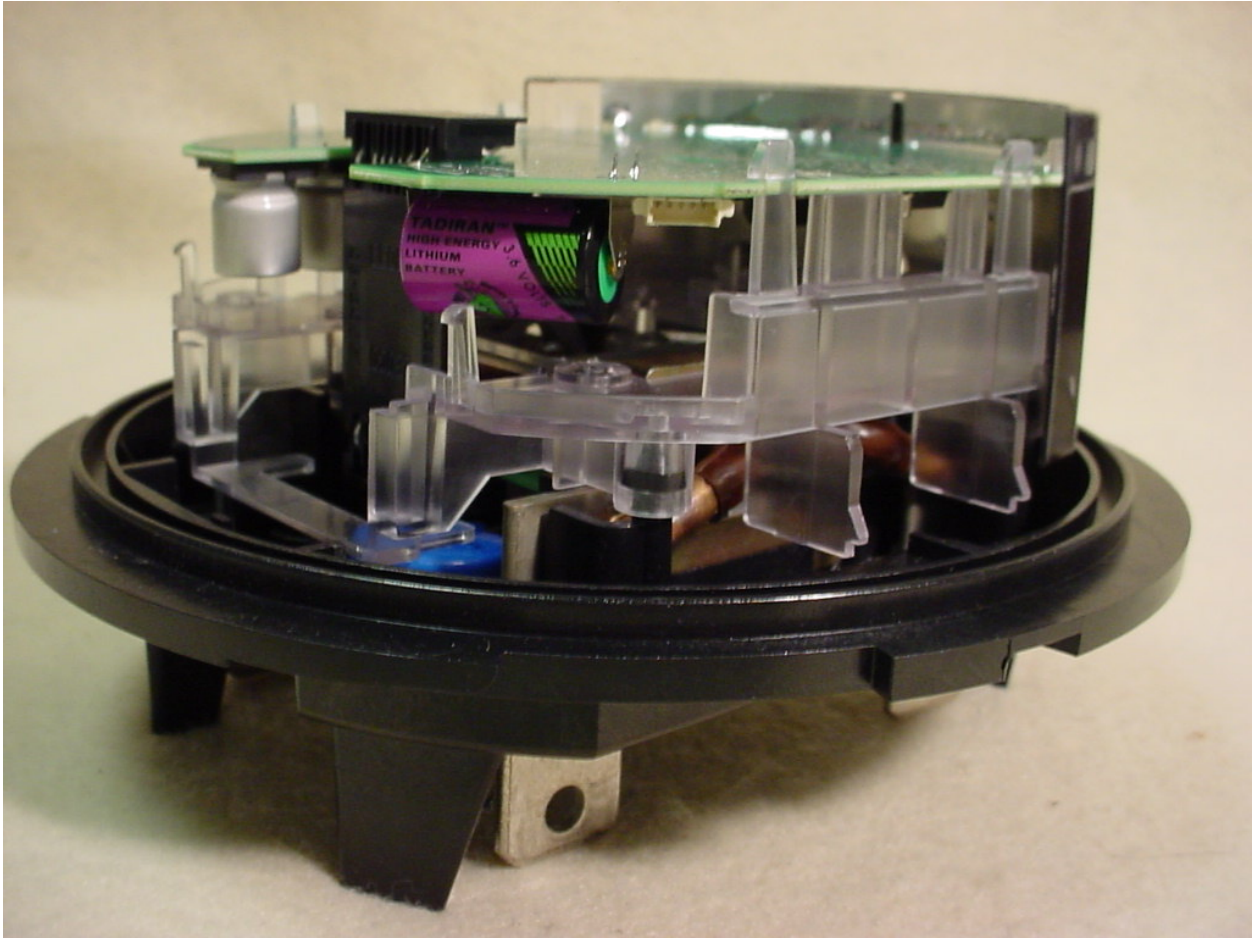
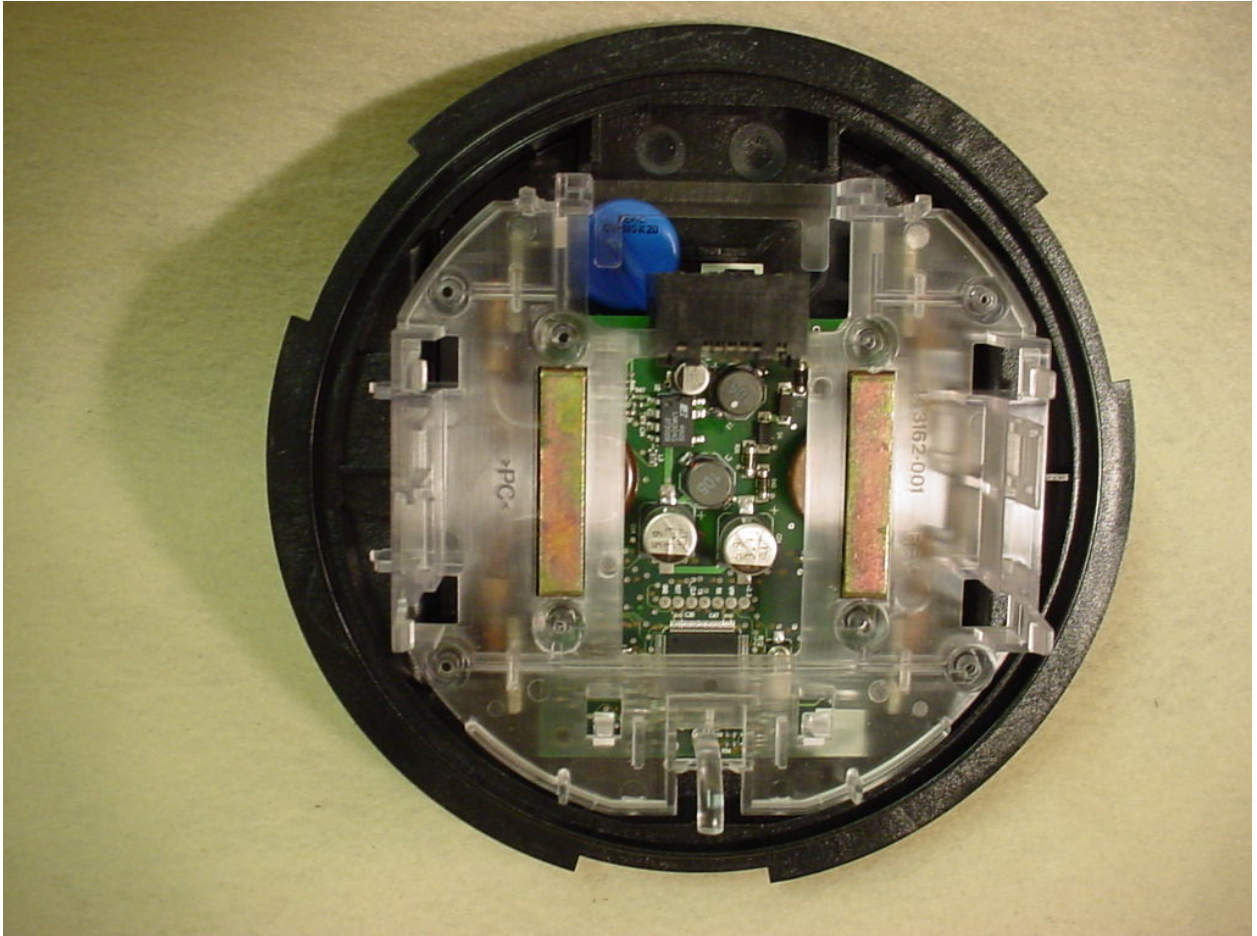


Figure 3: Internal – Assembled View





**Figure 4: Internal – Assembled View – Metrology Section**

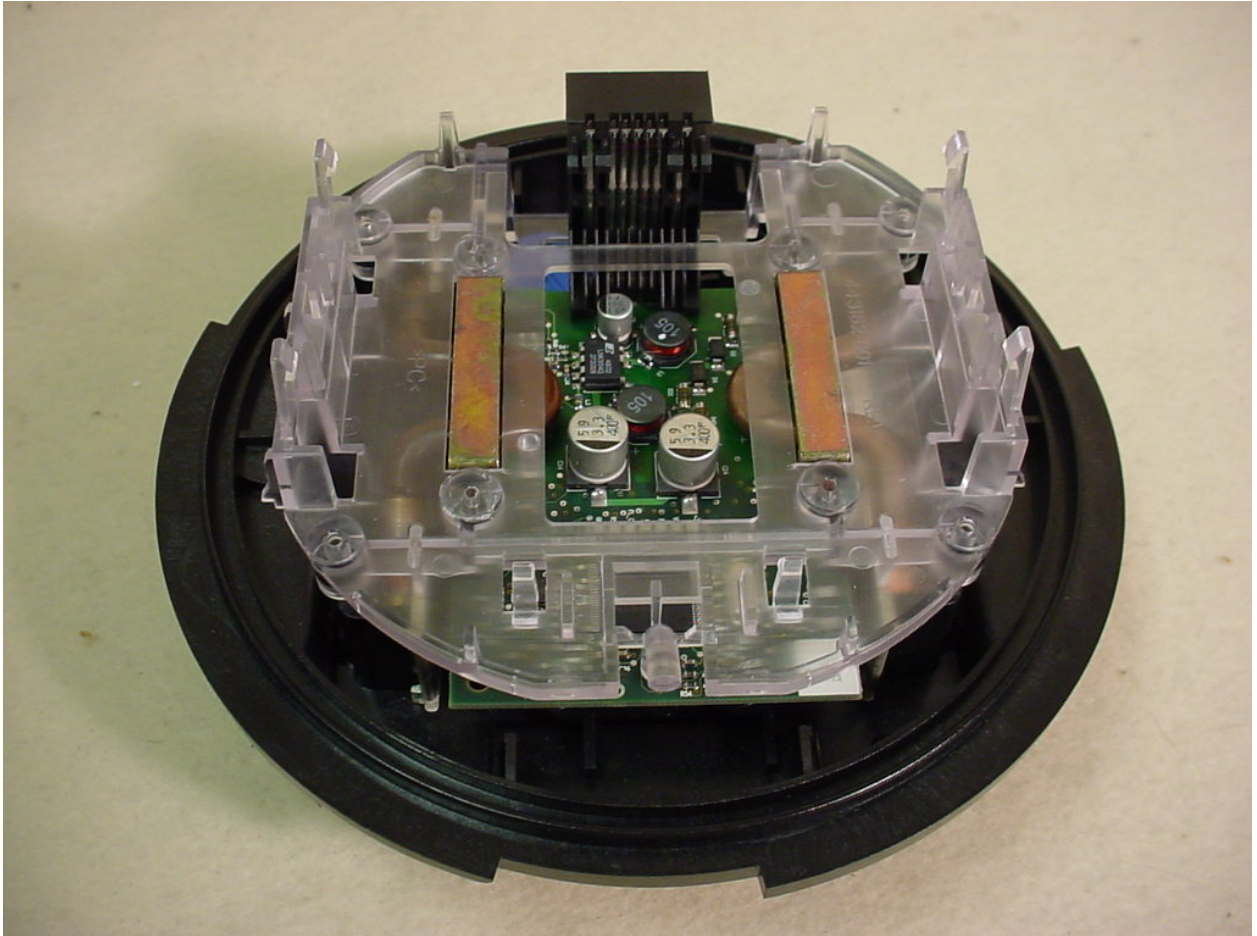


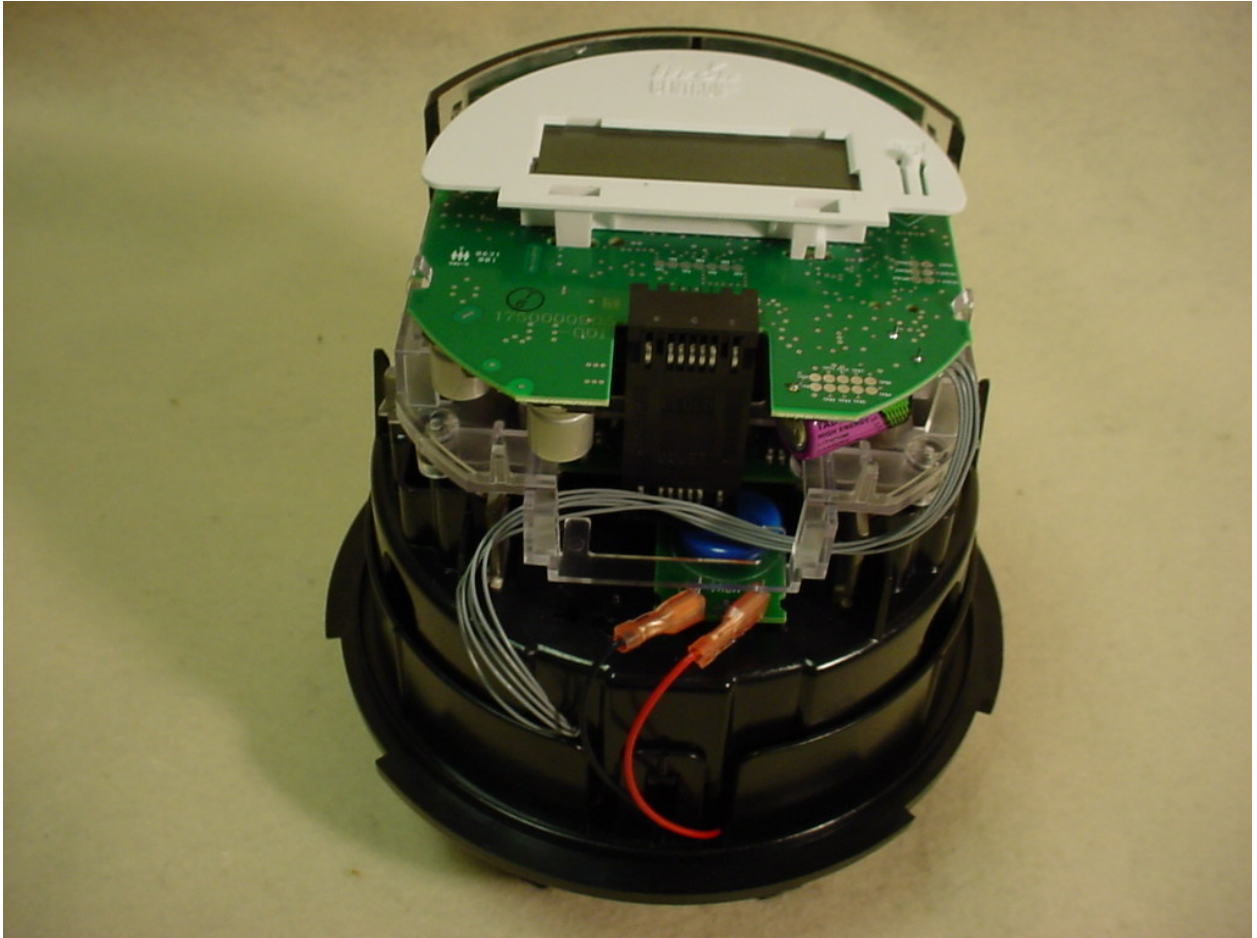
Figure 5: Internal – Assembled View – Metrology Section

**Model: CVSOD**



**Figure 6: Internal – Assembled View**





**Figure 7: Internal – Assembled View**



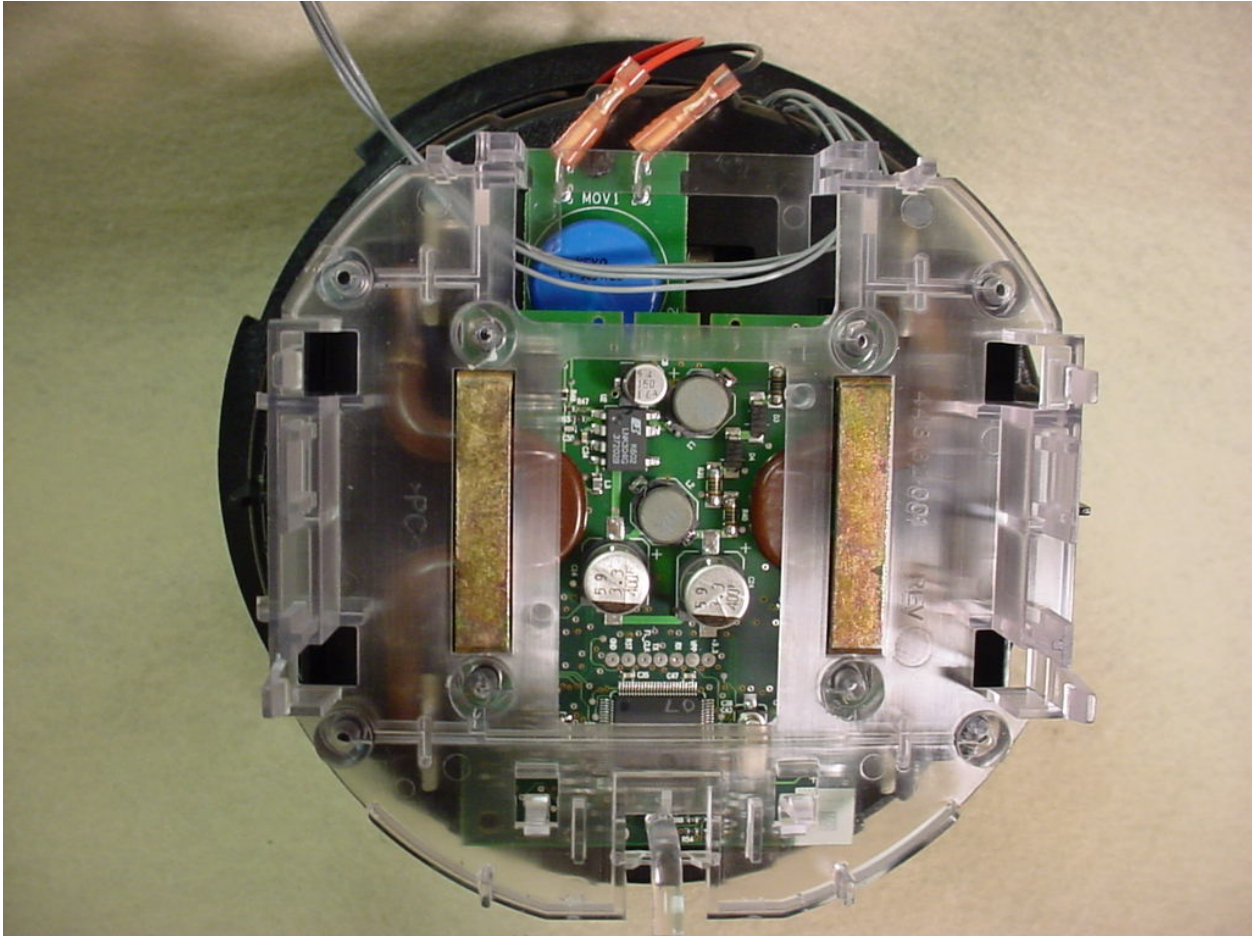


Figure 8: Internal – Assembled View – Metrology Section



Figure 9: Internal – Disconnect Switch

**Model: CVSOC**



**Figure 10: Internal – Assembled View (Ethernet & Ethernet + GPRS Sub Assemblies)**

**NOTE 1: GPRS Only Sub Assembly of the CVSOC is identical to the CVSOD model for assembled views.**

**NOTE 2: The Metrology Section of all CVSOC Sub Assemblies is identical to the CVSOD Metrology Section.**





Figure 11: Internal – Mezzanine GPRS Board (GPRS & GPRS + Ethernet Sub Assemblies Only)

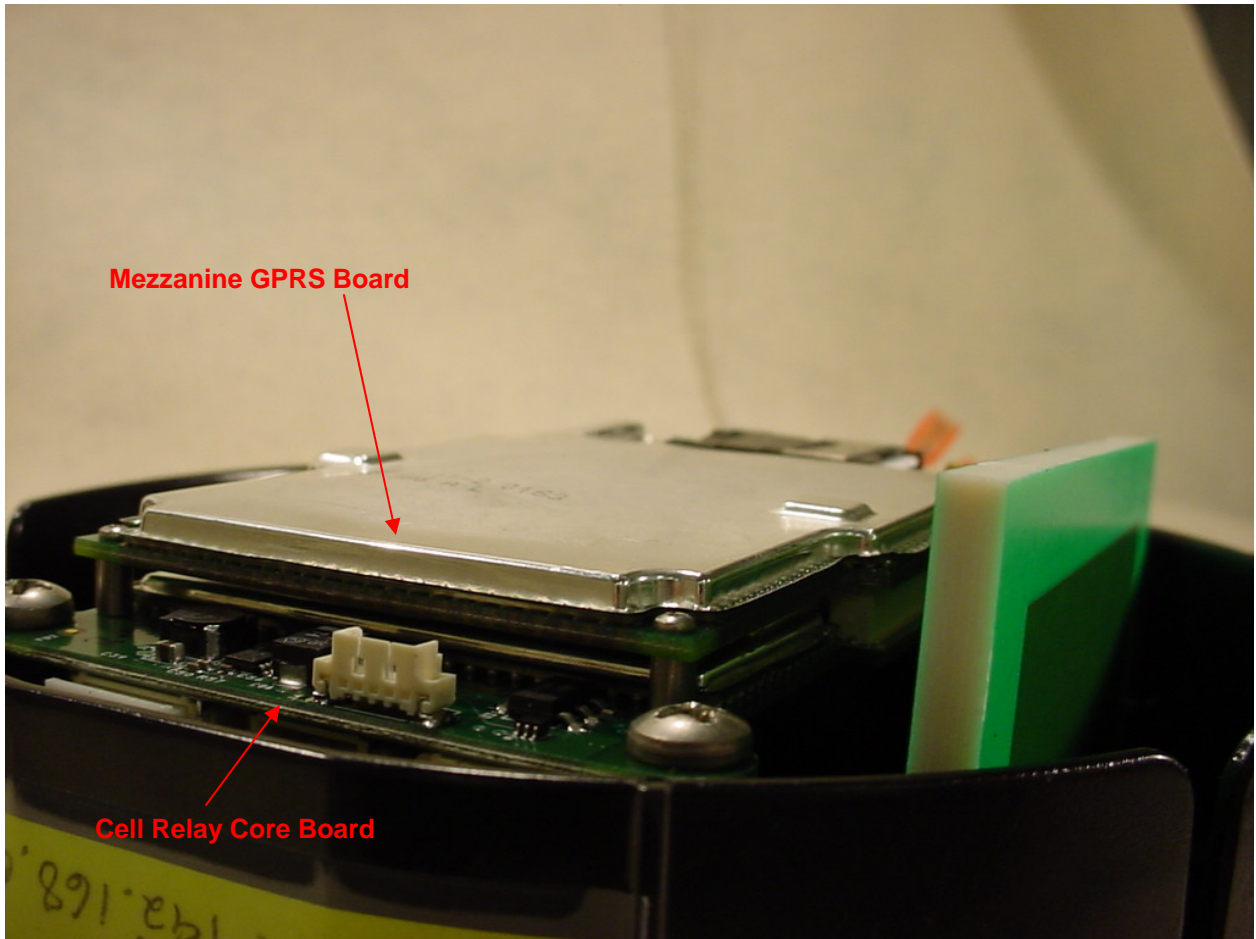
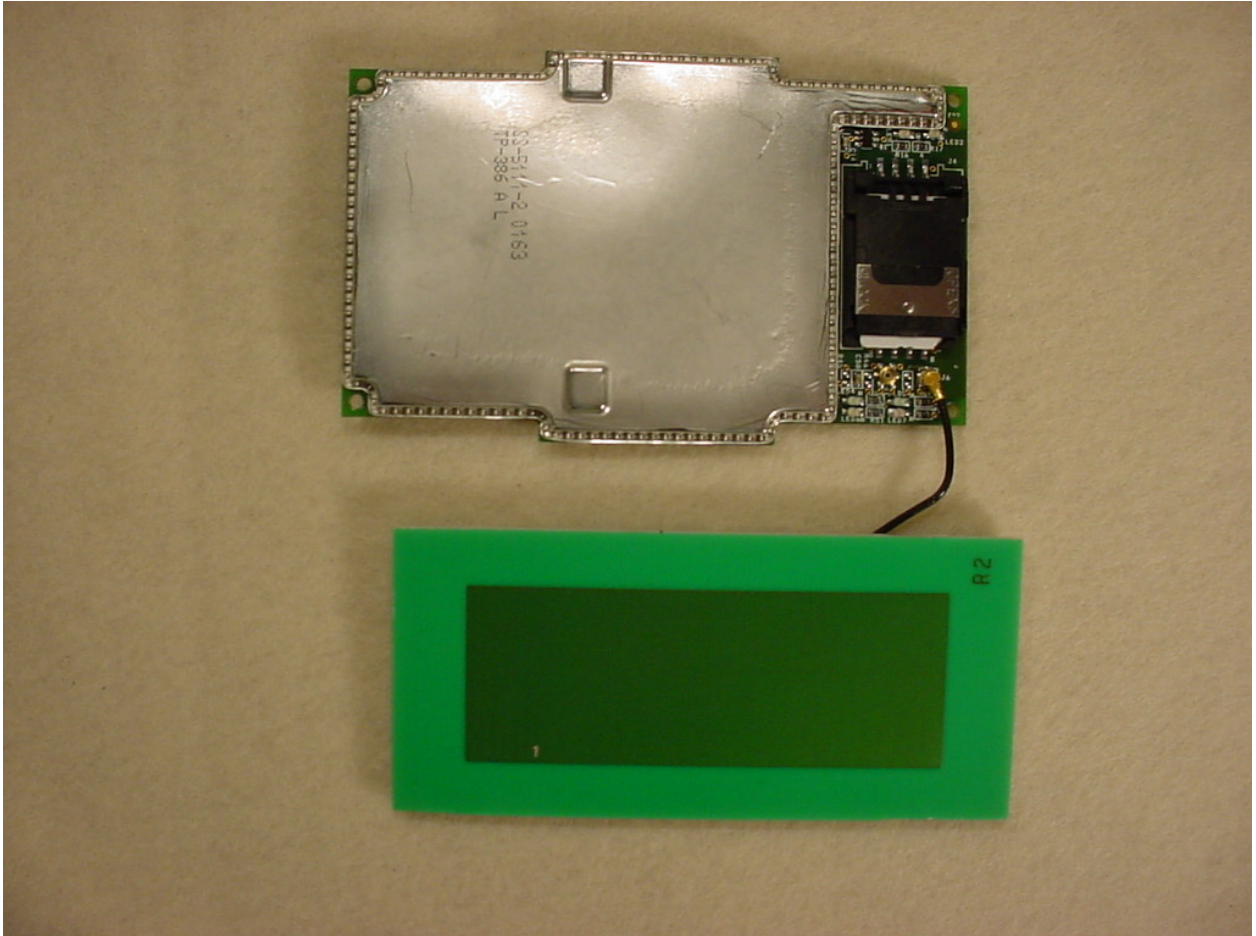


Figure 12: Internal – Mezzanine GPRS Board (GPRS & GPRS + Ethernet Sub Assemblies Only)



**Figure 13: Internal – Mezzanine GPRS Board and Antenna (GPRS & GPRS + Ethernet Sub Assemblies Only)**





**Figure 14: Internal – Mezzanine GPRS Board Front w/ Shields (GPRS & GPRS + Ethernet Sub Assemblies Only)**

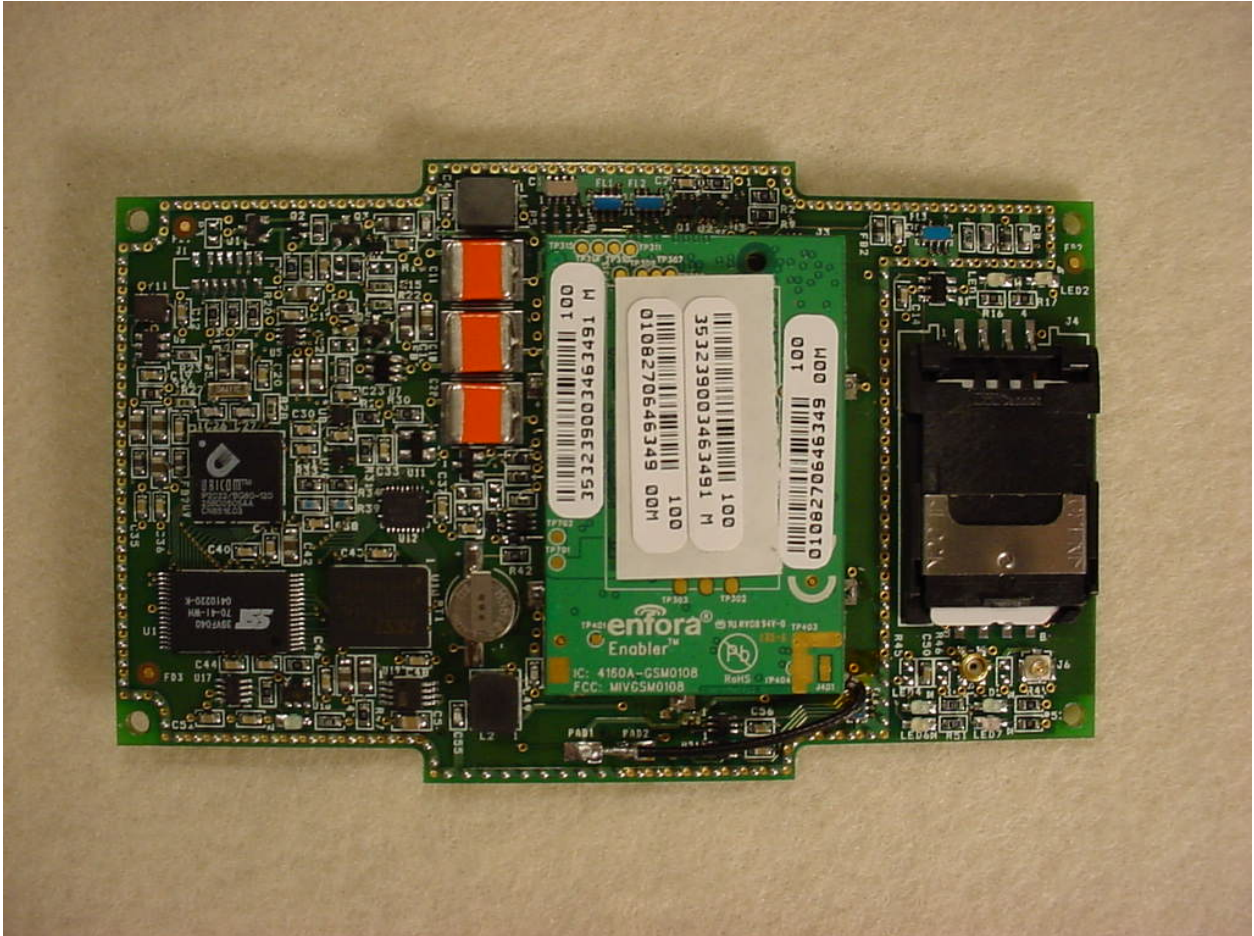


Figure 15: Internal – Mezzanine GPRS Board Front w/o Shields (GPRS & GPRS + Ethernet Sub Assemblies Only)



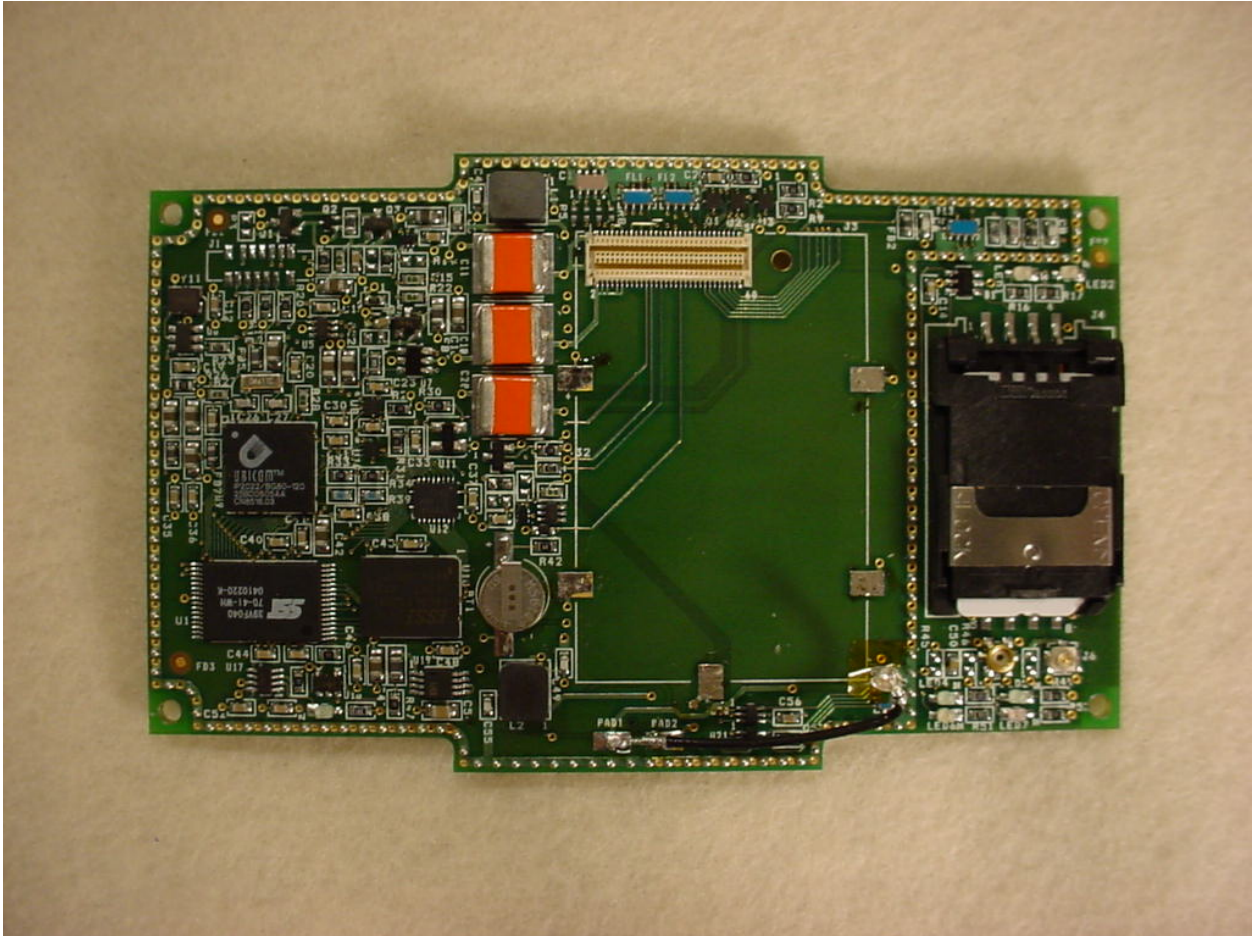


Figure 16: Internal – Mezzanine GPRS Board Front w/o Shields - GPRS Modem Removed (GPRS & GPRS + Ethernet Sub Assemblies Only)



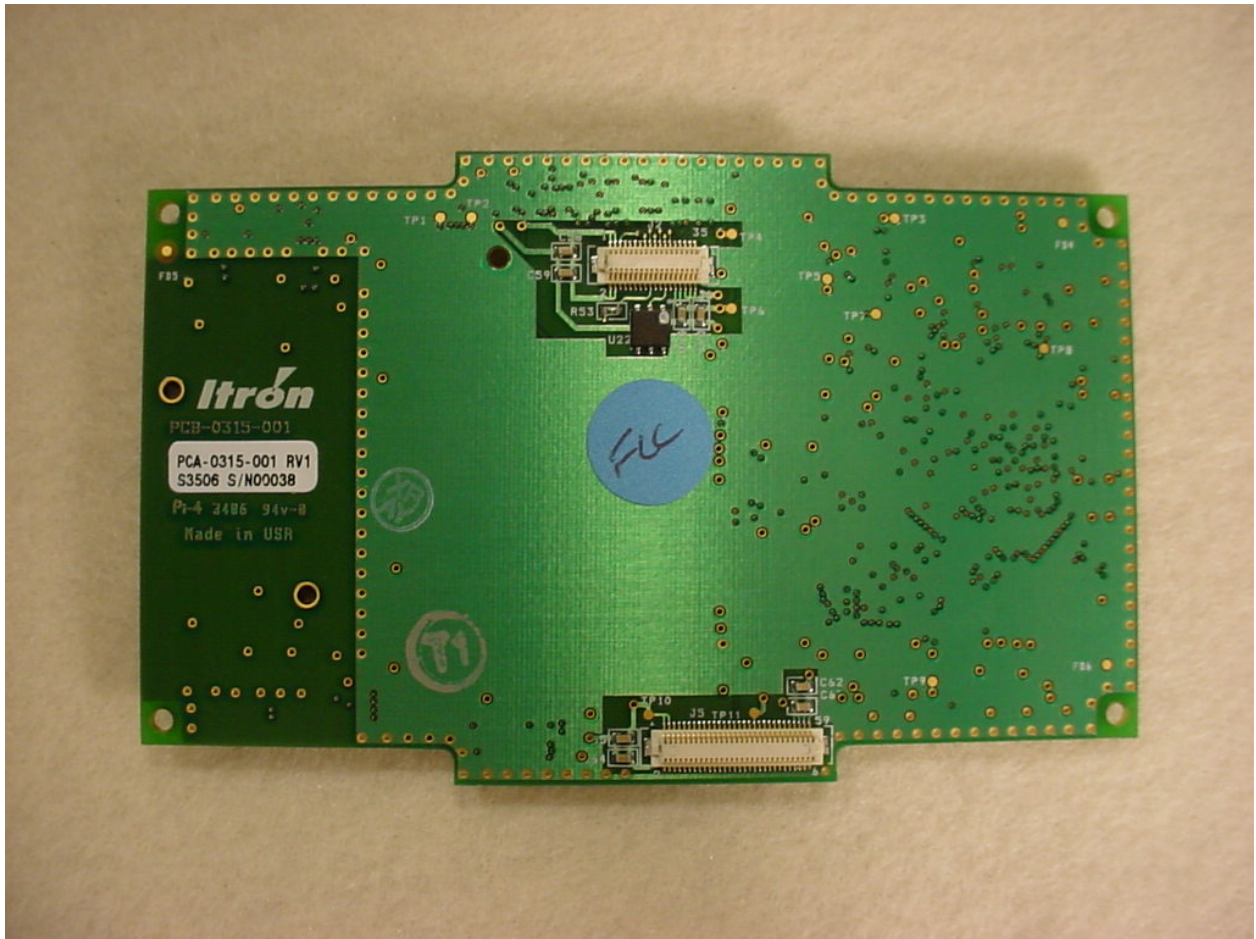


Figure 17: Internal – Mezzanine GPRS Modem Board Back (GPRS & GPRS + Ethernet Sub Assemblies Only)



Figure 18: Internal –GPRS Modem Module Front (GPRS & GPRS + Ethernet Sub Assemblies Only)

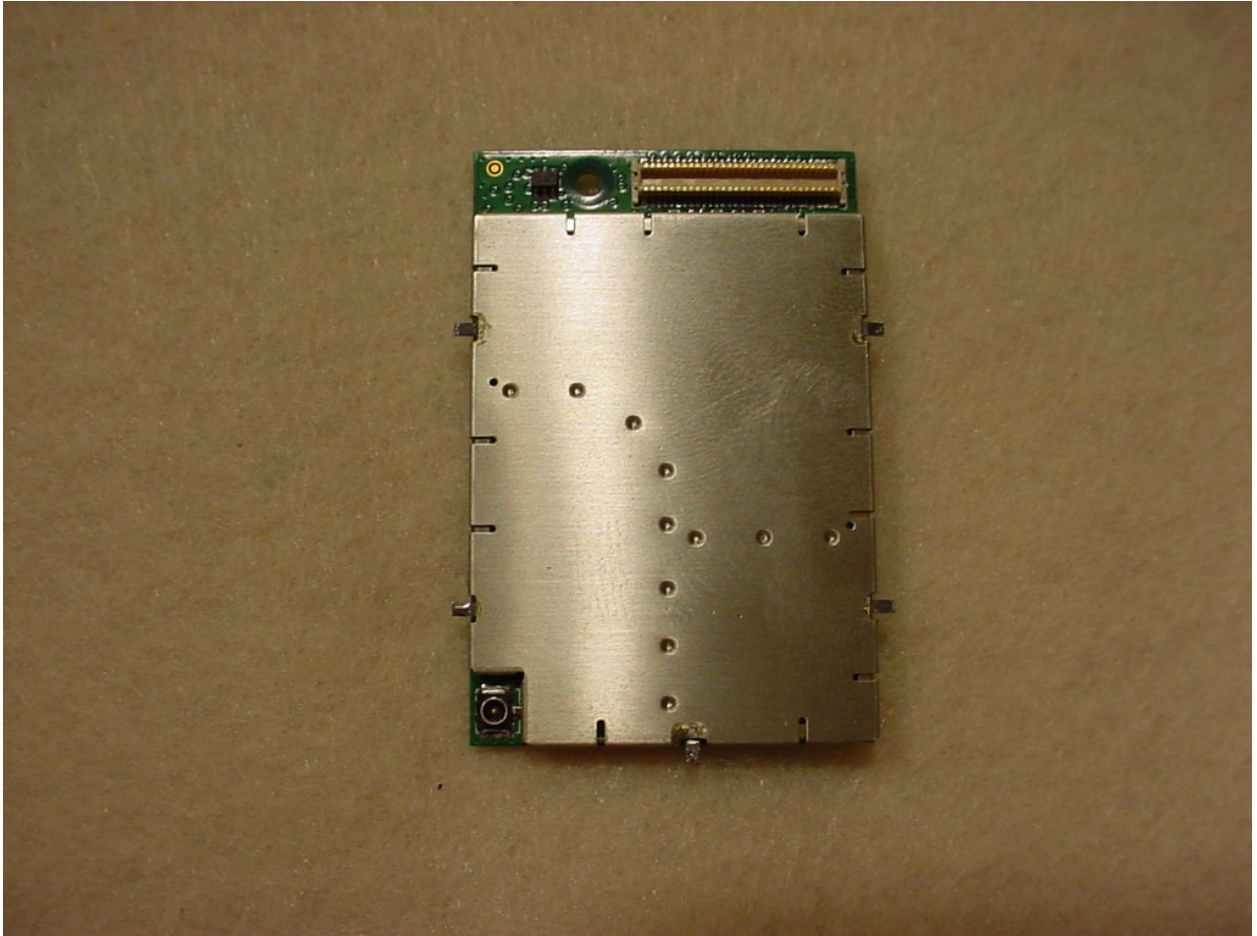


Figure 19: Internal –GPRS Modem Module Back (GPRS & GPRS + Ethernet Sub Assemblies Only)



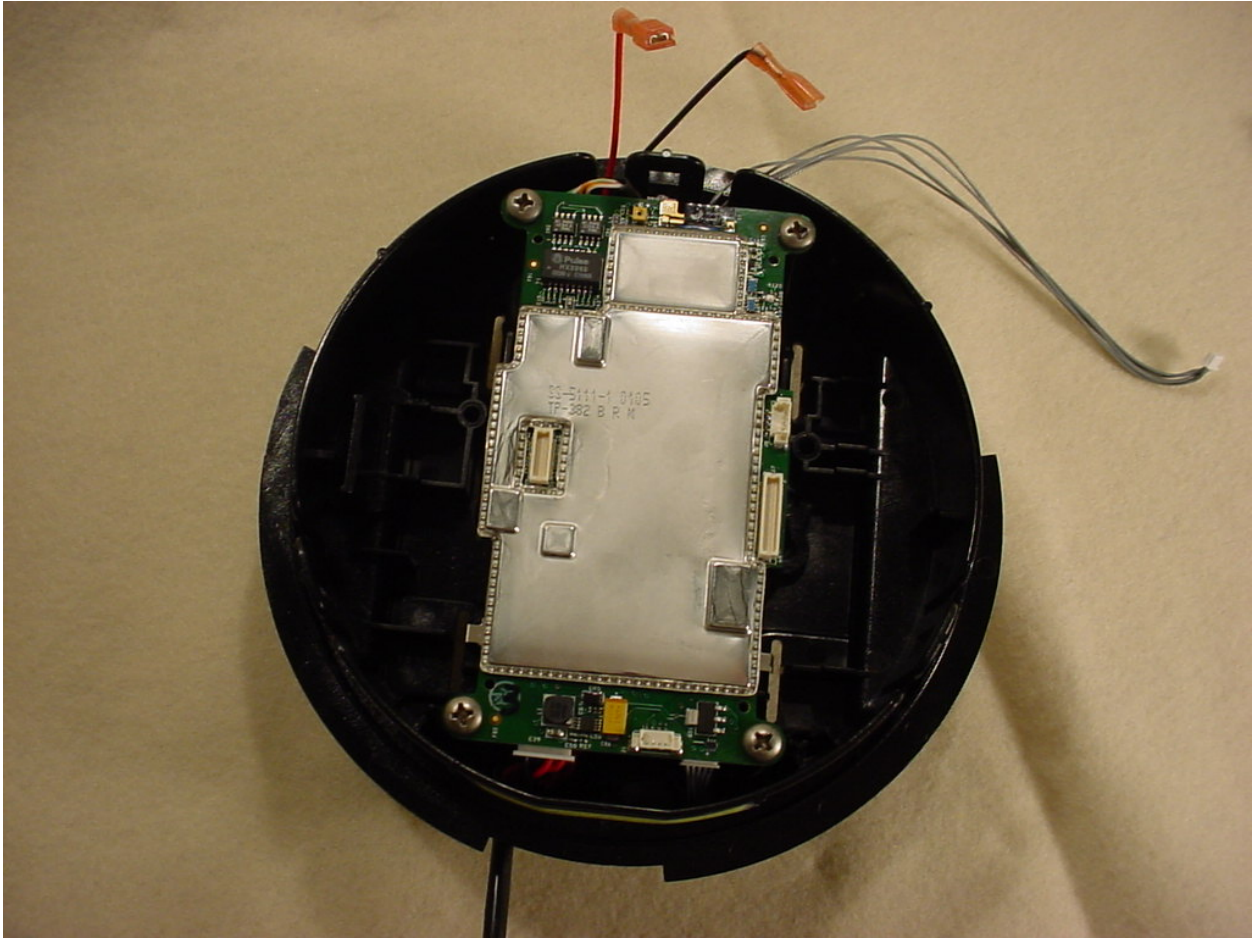


Figure 20: Internal – Cell Relay Core Board

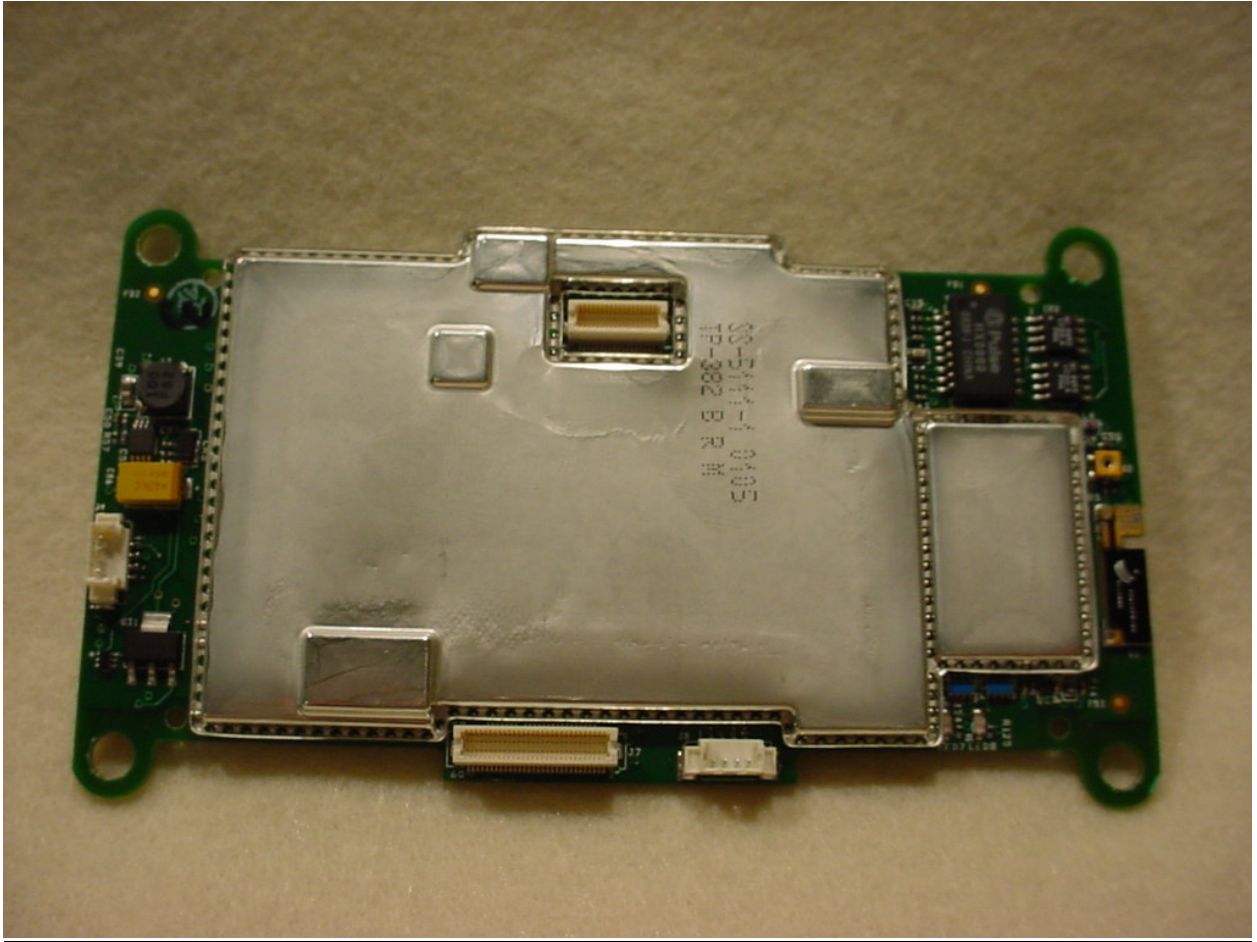


Figure 21: Internal – Cell Relay Core Board

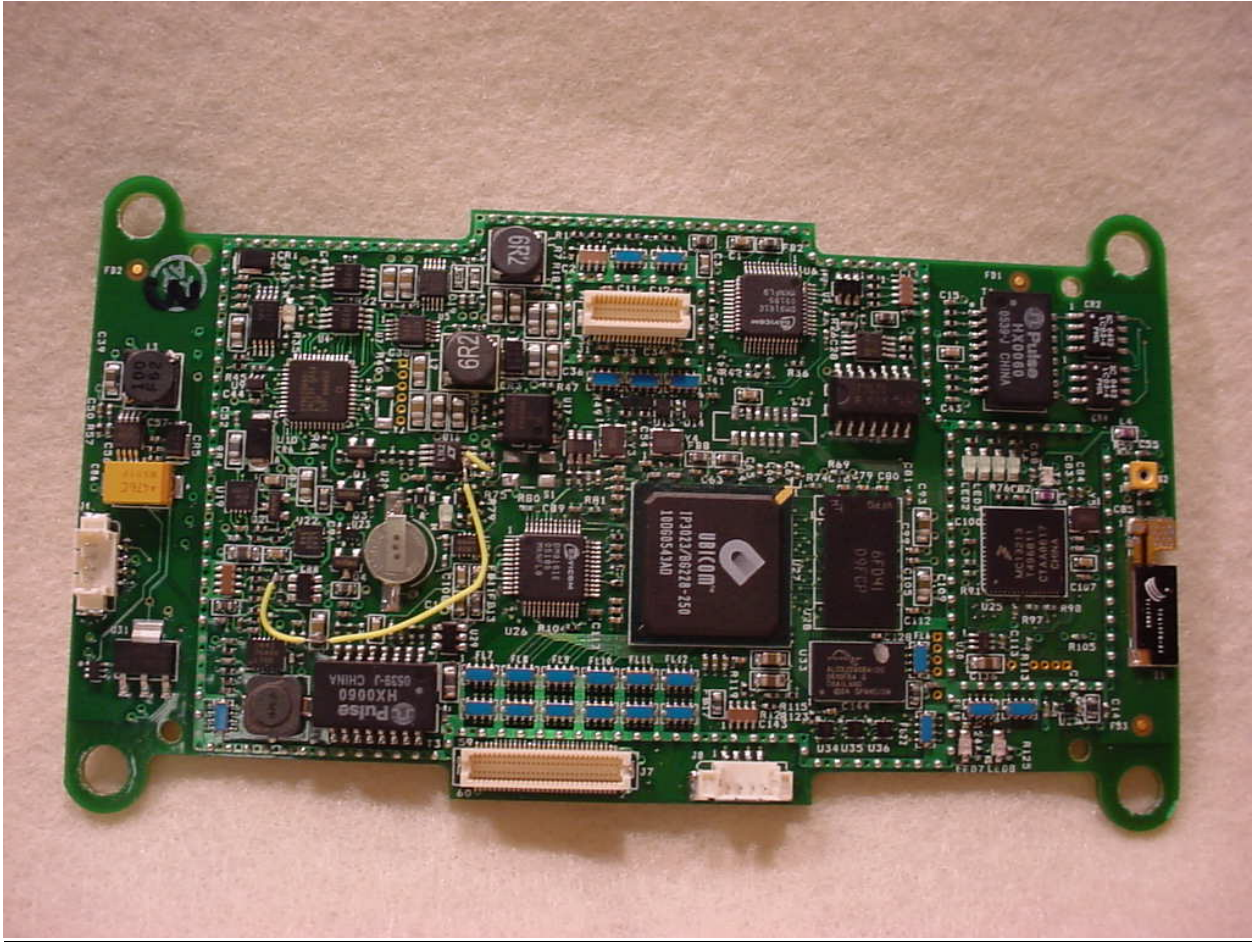


Figure 22: Internal – Cell Relay Core Board (No Shield)



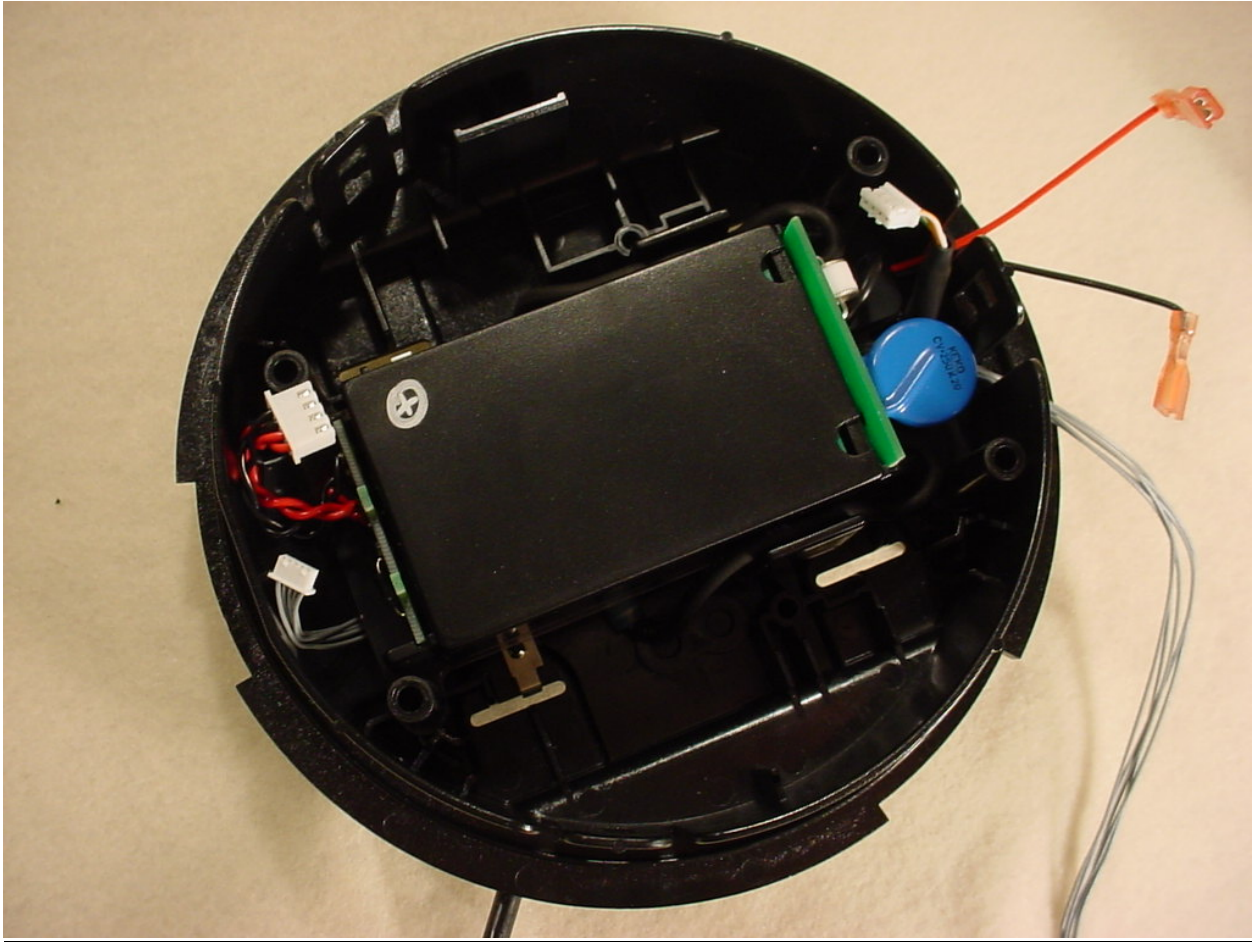


Figure 23: Internal – Power Supply Section

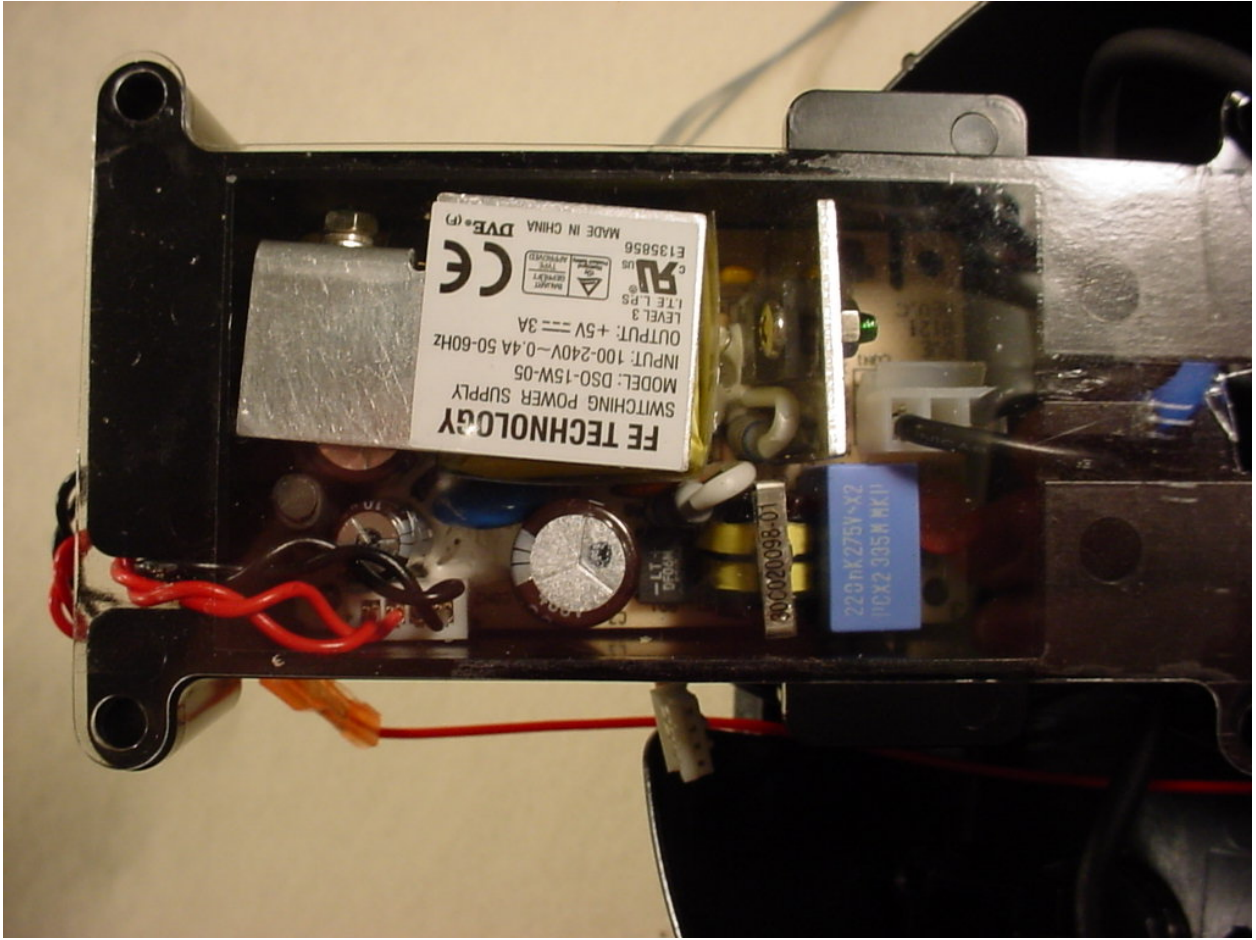
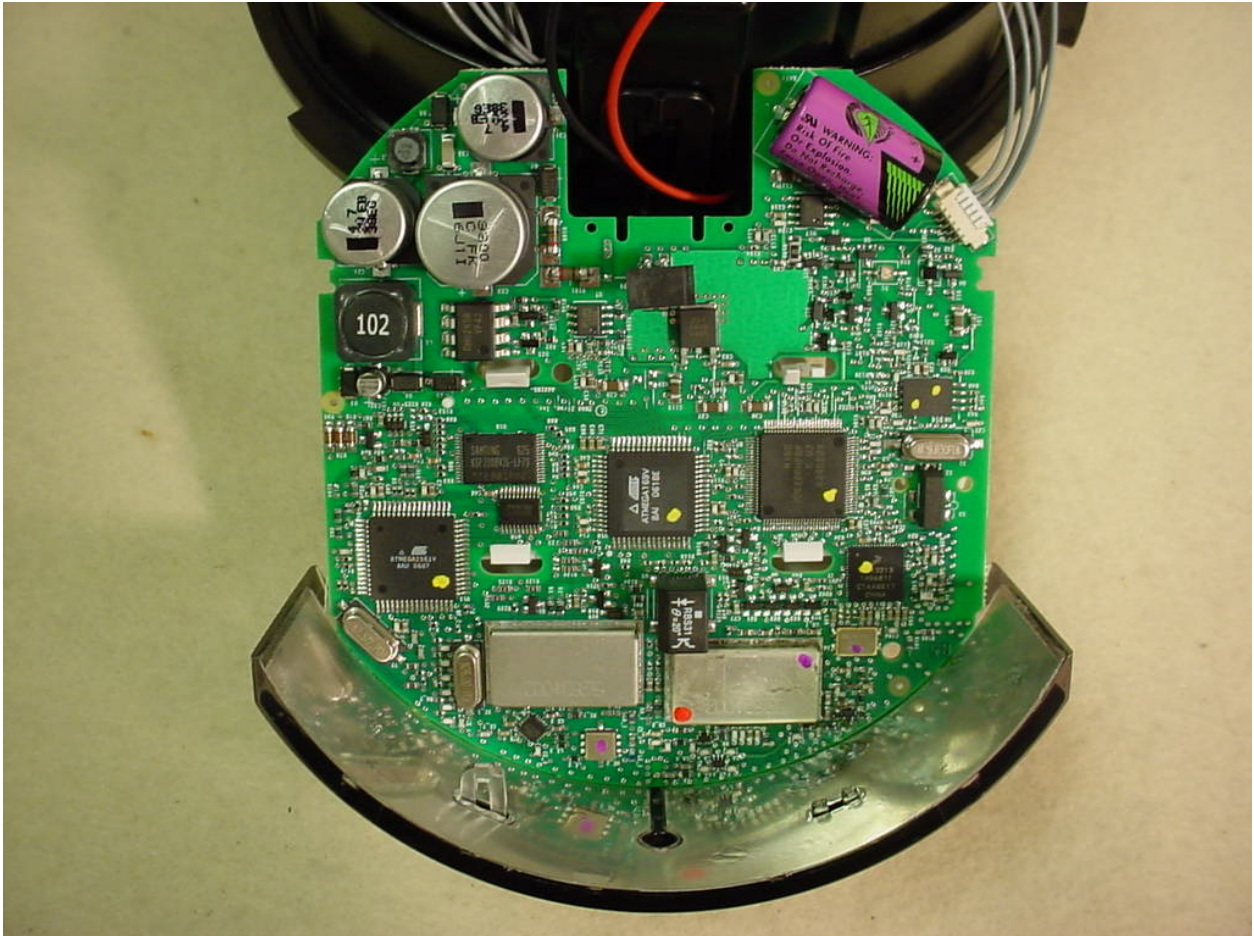


Figure 24: Internal – Power Supply Section

**CVSO, CVSOD, CVSOC Register Board (RF):**



**Figure 25: Internal – Register Board (RF) Top**



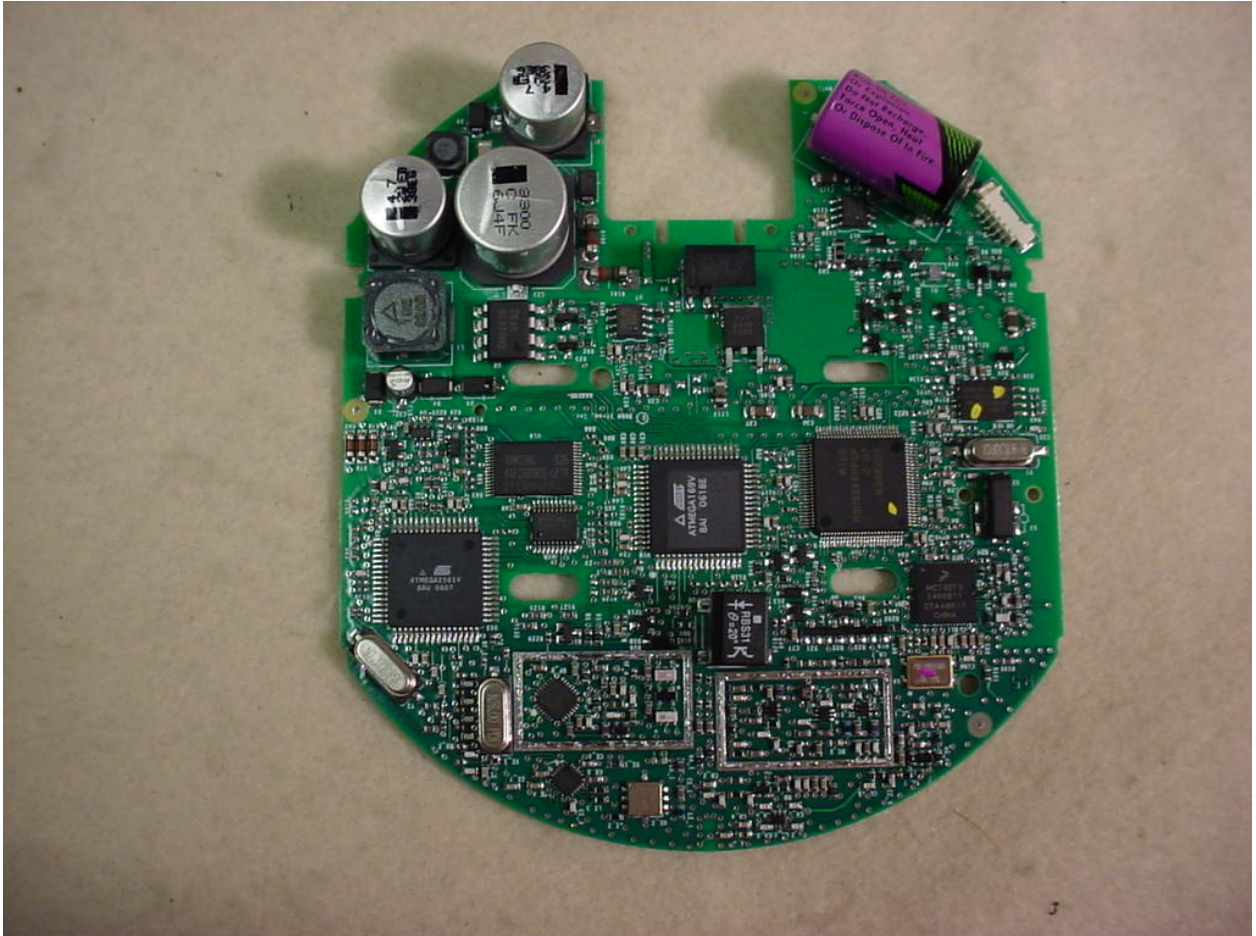


Figure 26: Internal – Register Board (RF) Top - No Shields/Antenna

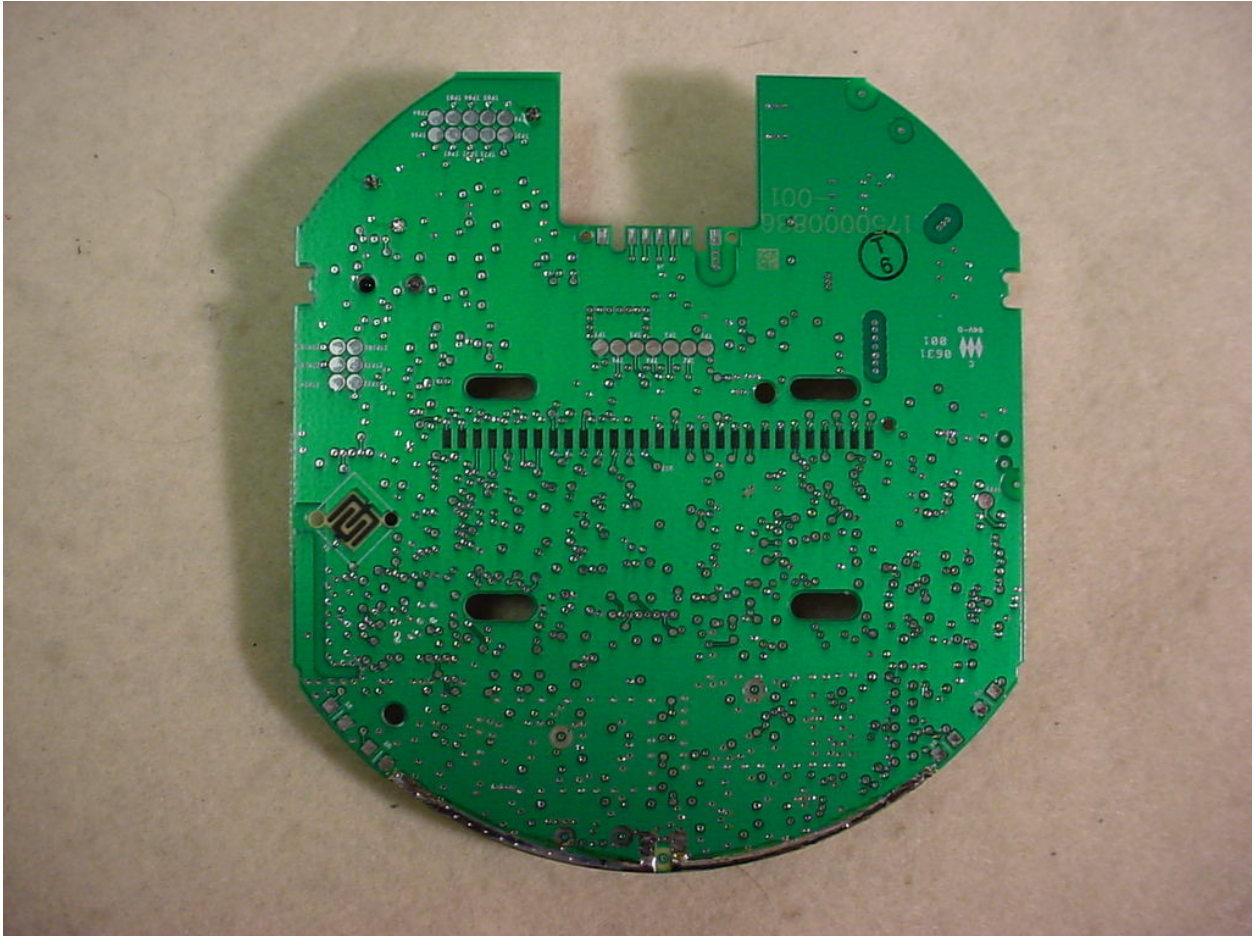


Figure 27: Internal – Register Board (RF) Bottom