

**FCC Part 15.247/15.249  
Transmitter Certification**

**Composite Device**

**Test Report**

**FCC ID: SK9AMI-1**

**FCC Rule Part: 15.247/15.249**

**ACS Report Number: 06-0239-15C-DSS, 06-0239-15C-DXX**

Manufacturer: Itron Electricity Metering Inc.  
Trade Name: CENTRON Open Way  
Model(s): CVSO, CVSOD, CVSOC

**External Photographs**

**Model: CVSO**



**Figure 1: External – Top View**

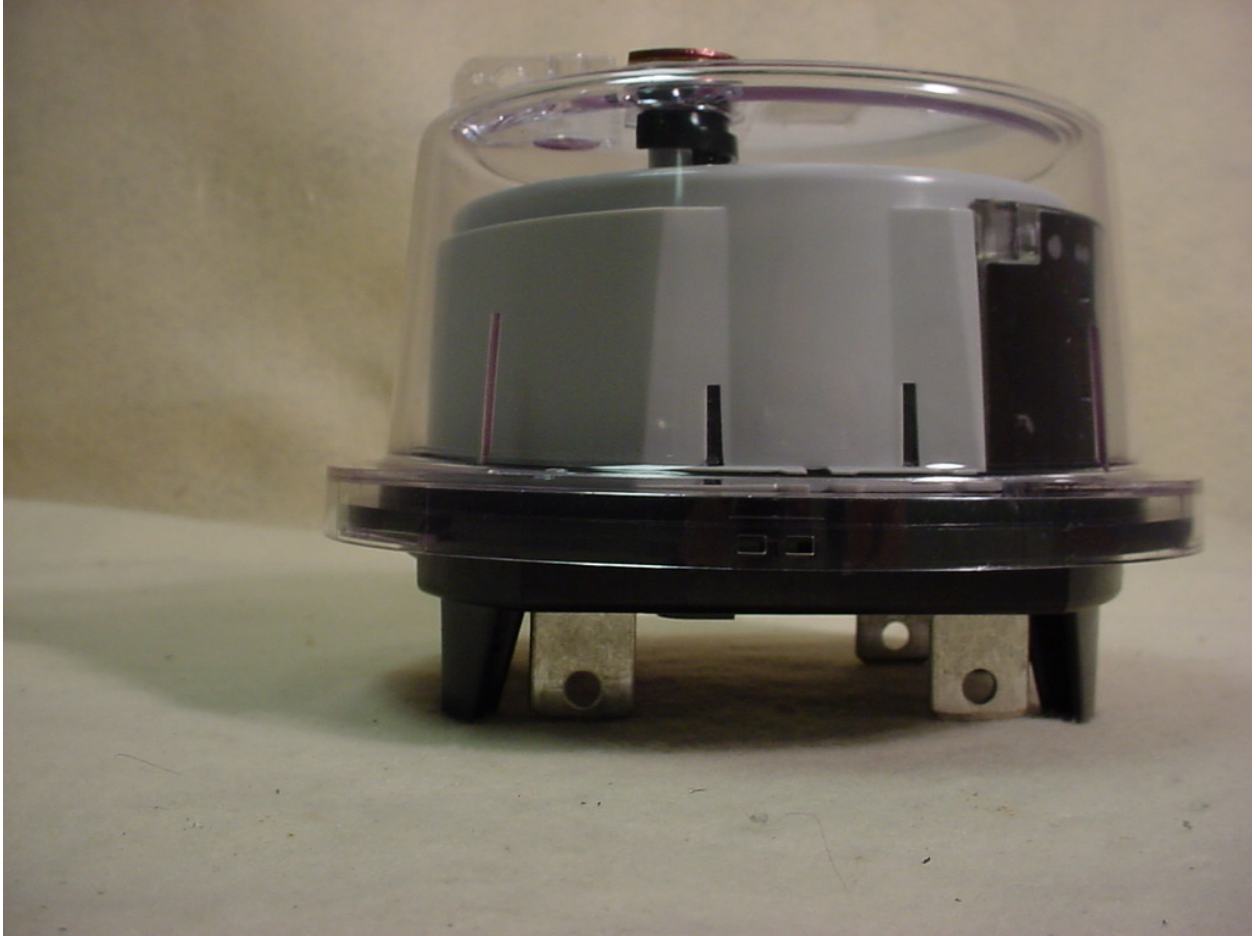


Figure 2: External – Side View



**Figure 3: External – Side View**

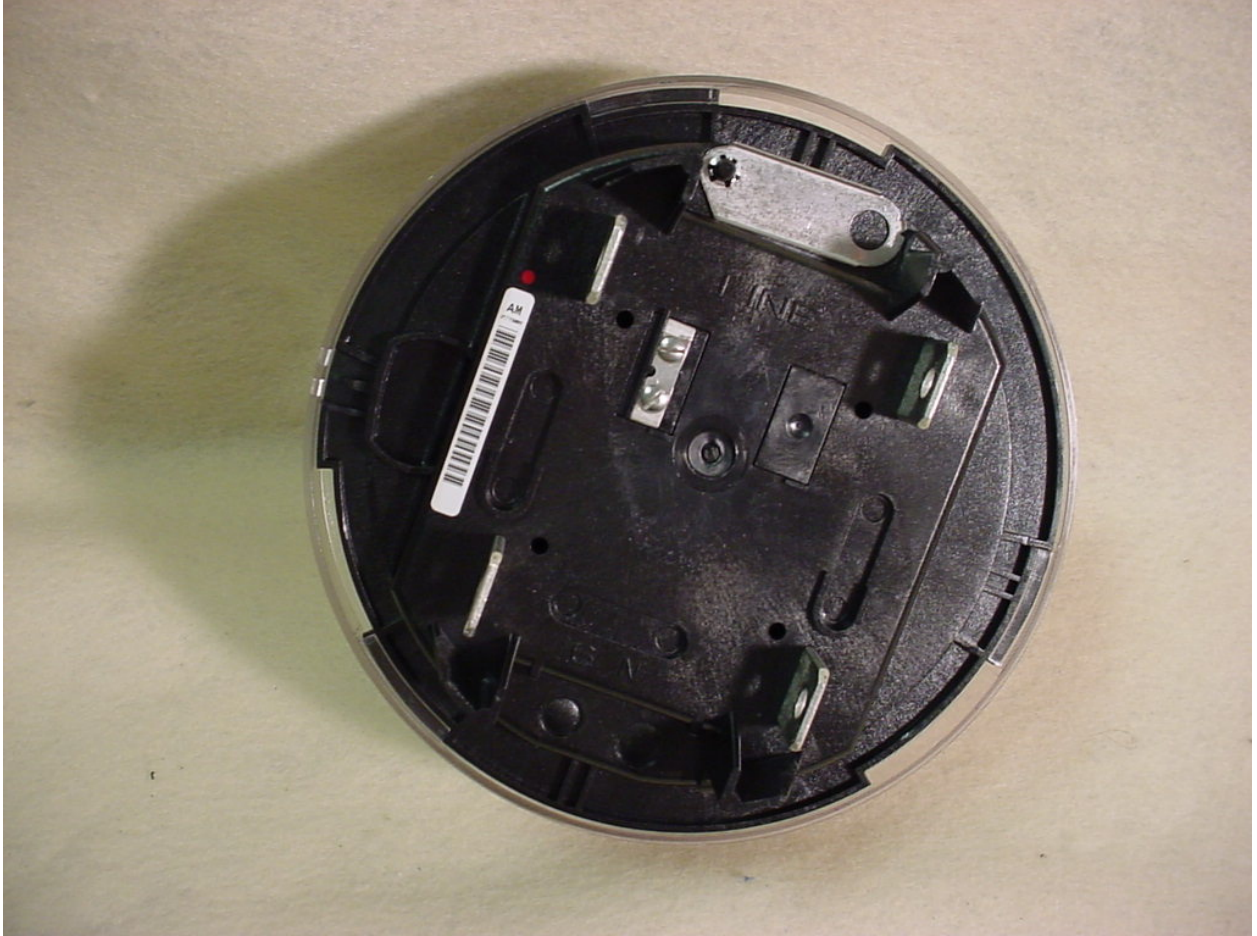
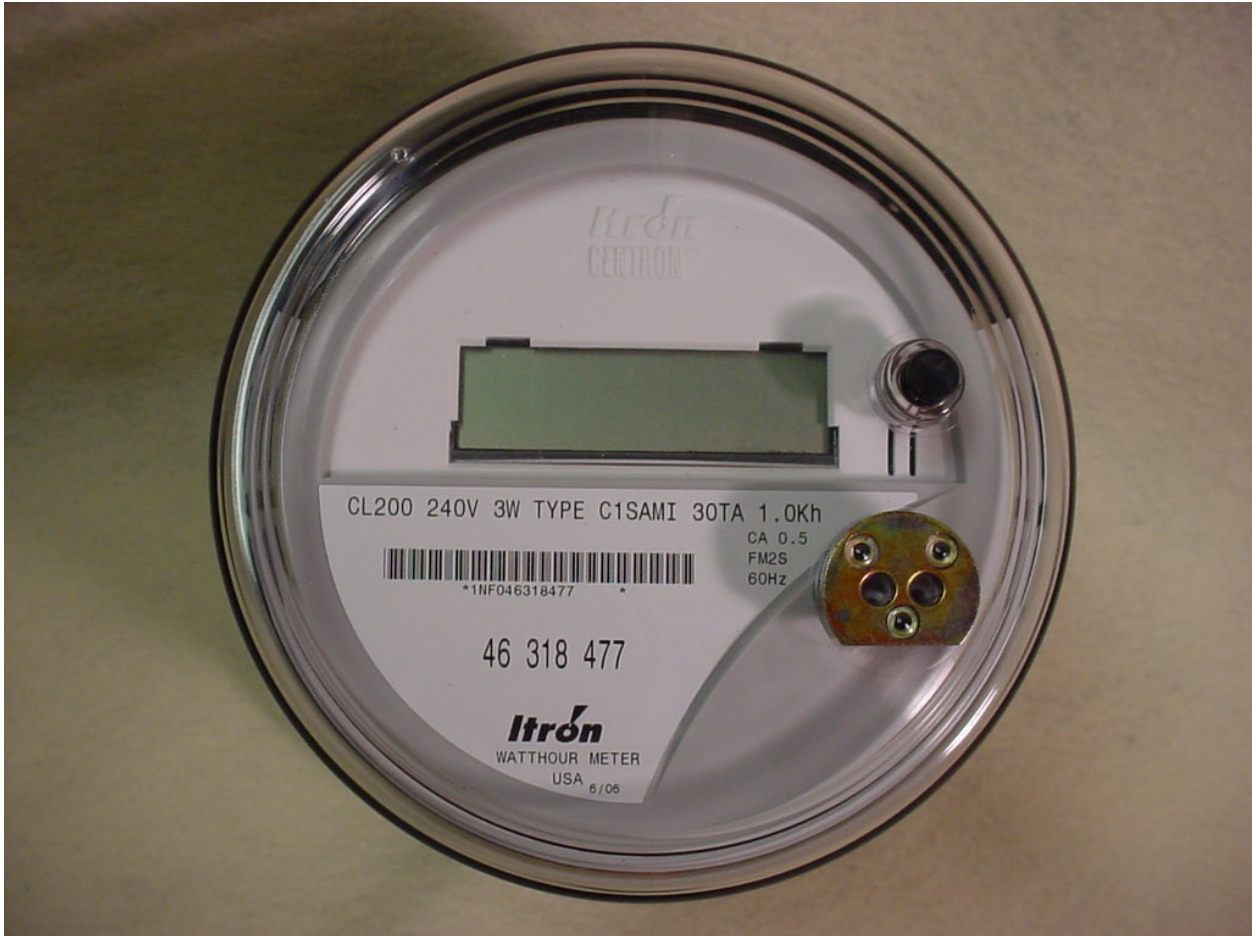


Figure 4: External – Bottom View

**Model: CVSOD**



**Figure 5: External – Top View**



Figure 6: External – Side View



**Figure 7: External – Side View**



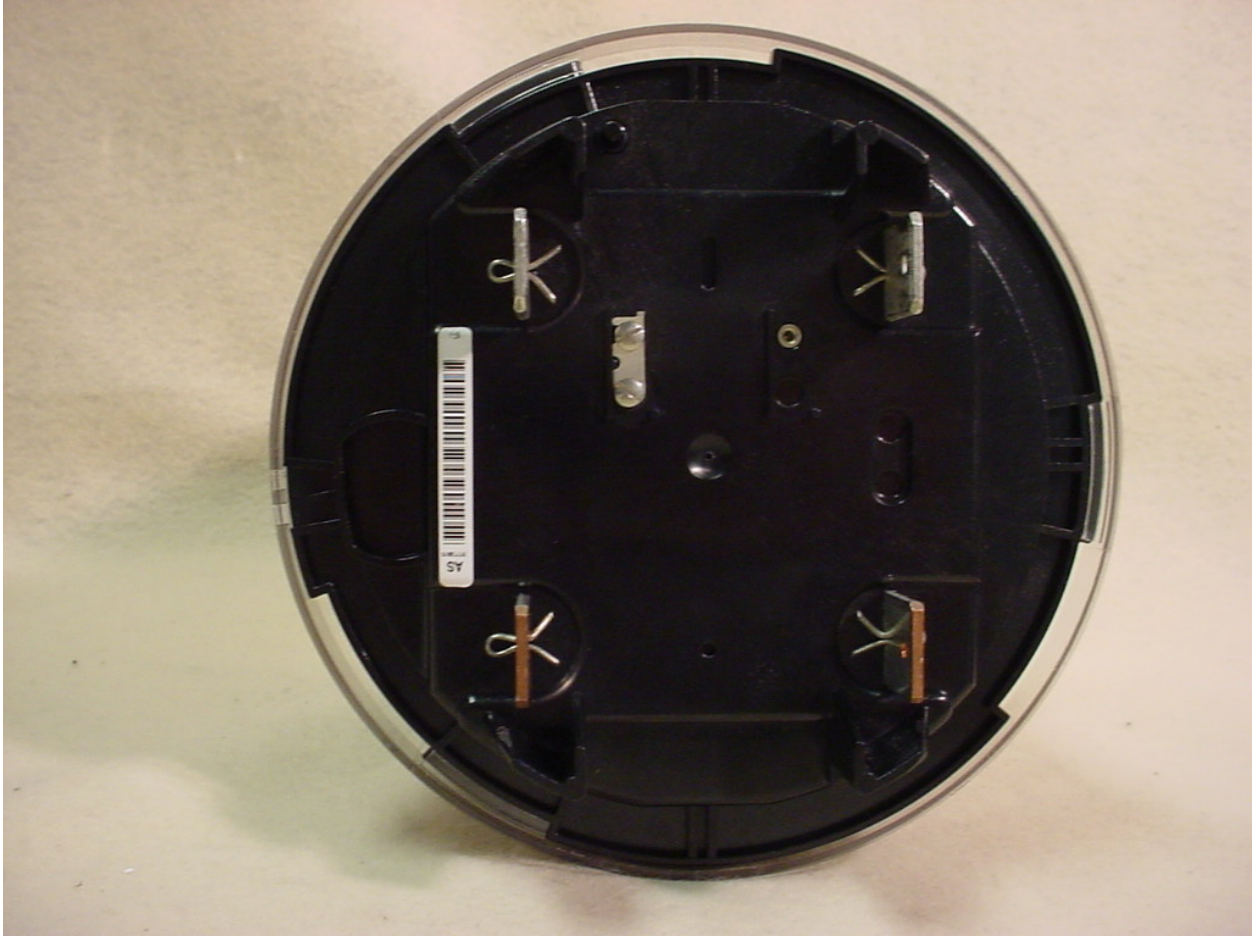


Figure 8: External – Bottom View

**Model: CVSOC**



**Figure 9: External – Top View (Ethernet Capable Sub Assembly)**

**Note:** The GPRS Only Sub Assembly does not have an external Ethernet connector otherwise it is identical to the Ethernet capable Sub Assemblies.



Figure 10: External – Top View (Ethernet Capable Sub Assembly)



Figure 11: External – Side View (Ethernet Capable Sub Assembly)



Figure 12: External – Bottom View (Ethernet Capable Sub Assembly)