



Hayward, California

LABEL DRAWING

LABEL, ID, 2.4GHZ, XD, GATEWAY

Document Number:
895-0029

Revision:
2

Effective Date:
Effective on ECO Release Date (See Arena)

Revision history

Revision	ECO	Notes	Date
1	ECO-000404	INITIAL RELEASE	11-14-2007
2	ECO-000412	Added Lot ID number to label	11-30-2007

The complete revision and approval history of this document may be found in the Arena vault under the document number

895-0029 LABEL, ID, 2.4GHZ MOTE AND GATEWAY

Line # 1: Model Number

Line # 2: Dust Part Number and Revision Number (taken from Arena.)

THE PART NUMBER FOR THE ASSEMBLY IS ACQUIRED FROM THE ARENA PLM SYSTEM.

Line # 3: Lot ID #

Line # 4: Date code. Week-Year (WW-YY)

Line # 5: "Mfg. in USA"

Line # 6: "FCC ID SJC-MXXXX"

See Table below.

Overall dimension: 5/8" length x 1/2" width.

Size margin: 1/16"

Label material: white, laminated Mylar

3M model 7871 Mylar substrate

Label material: Mylar substrate 3M 7871 2 mil Heavy Coat; with 1 mil clear glossy laminate.

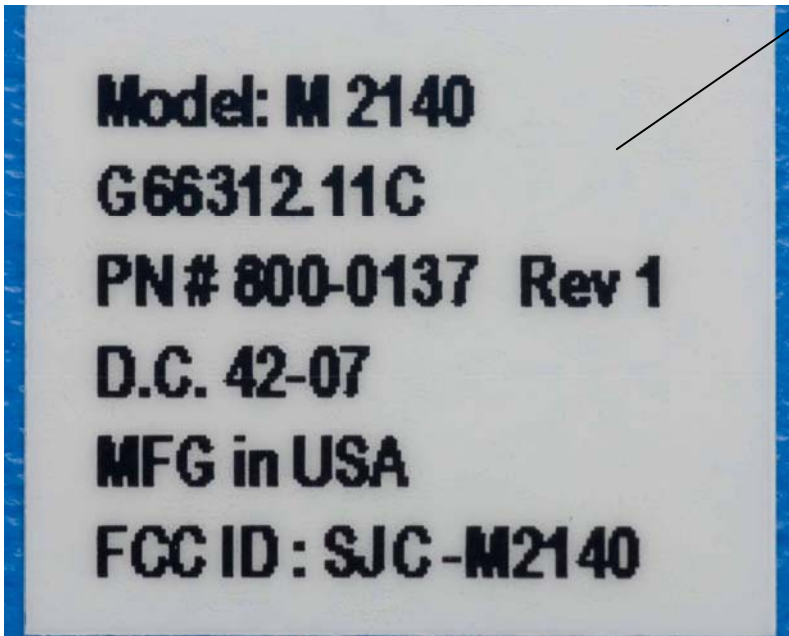
Adhesive: 0.0018" permanent acrylic adhesive

Font: Arial

Font size: 5pt

Label ink: black, indelible resin ink

Printer: Brother P-Touch Pro-XL



Sample

LABEL REQUIREMENT	PRODUCT MODEL NUMBER		
	PM2140-1GW	PM2140-2GW	PM2040GW
Model Number	M2140	M2140	M2040
Dust Part Number and Revision (see Arena for Rev)	800-0137revX	800-0137revX	800-0138revX
Lot ID #	LLLLLL-NNA	LLLLLL-NNA	LLLLLL-NNA
Date Code (Date of Network Test (mm=month yy=year))	D.C. mm-yy	D.C. mm-yy	D.C. mm-yy
Country of Manufacture	MFG in USA	MFG in USA	MFG in USA
FCC Mark	FCC ID:SJC-M2140	FCC ID:SJC-M2140	FCC ID:SJC-M2040