

FCC TEST REPORT

FCC ID : SJ8-CA650M

Applicant : RDI Technology (Shenzhen) Co., Ltd

Address of Applicant : Building C1 Xingtang Industrial Park, East Baishixia,
Fuyong, Baoan, Shenzhen, PRC.

Equipment Under Test (EUT) :

Product description : Digital Wireless Camera

Model No. : CA650M

Frequency Range : 2406MHz to 2476MHz

Standards : FCC 15 Paragraph 15.247

Date of Test : May 09,2011

Test Engineer : (Olic huang) *Olic huang*

Reviewed By : (Philo zhong) *Philo zhong*

PERPARED BY:

Waltek Services (Shenzhen) Co., Ltd.

1/F, Fukangtai Building, West Baima Rd., Songgang Street, Baoan District, Shenzhen
518105, China

Tel :+86-755-27553488

Fax:+86-755-27553868

2 Contents

	Page
1 COVER PAGE.....	1
2 CONTENTS.....	2
3 TEST SUMMARY.....	4
4 GENERAL INFORMATION.....	5
4.1 CLIENT INFORMATION	5
4.2 GENERAL DESCRIPTION OF E.U.T.....	5
4.3 DETAILS OF E.U.T.	5
4.4 DESCRIPTION OF SUPPORT UNITS	5
4.5 STANDARDS APPLICABLE FOR TESTING.....	5
4.6 TEST FACILITY.....	6
4.7 TEST LOCATION.....	6
4.8 EQUIPMENT USED DURING TEST	7
5 CONDUCTED EMISSION TEST	10
5.1 TEST EQUIPMENT.....	10
5.2 TEST PROCEDURE	10
5.3 CONDUCTED TEST SETUP	11
5.4 EUT OPERATING CONDITION	11
5.5 CONDUCTED EMISSION LIMITS	12
5.6 CONDUCTED EMISSION TEST DATA.....	12
5.7 CONDUCTED EMISSION TEST SETUP VIEW.....	14
6 RADIATION EMISSION TEST.....	15
6.1 TEST EQUIPMENT.....	15
6.2 MEASUREMENT UNCERTAINTY.....	15
6.3 TEST PROCEDURE	15
6.4 RADIATED TEST SETUP.....	16
6.5 SPECTRUM ANALYZER SETUP.....	16
6.6 CORRECTED AMPLITUDE & MARGIN CALCULATION	17
6.7 SUMMARY OF TEST RESULTS.....	17
6.8 EUT OPERATING CONDITION	18
6.9 RADIATED EMISSIONS LIMIT ON PARAGRAPH 15.209.....	18
6.10 RADIATED EMISSIONS TEST RESULT.....	19
6.11 RADIATED EMISSION DATA	19
6.11.1 Test mode: continuously receive mode.....	20
6.11.2 Test mode: continuously transmit mode.....	24
7 ANTENNA REQUIREMENT.....	30
8 MAXIMUM PEAK OUTPUT POWER.....	30
9 HOPPING CHANNEL NUMBER.....	31
10 FREQUENCY SEPARATED.....	32
11 DWELL TIME.....	35

12 20-DB BANDWIDTH.....39

13 RADIATED SPURIOUS EMISSIONS INTO ADJACENT RESTRICTED BAND41

14 RF EXPOSURE TEST.....46

15 PHOTOGRAPHS OF TEST SETUP FOR CRX AND CTX48

16 PHOTOGRAPHS - CONSTRUCTIONAL DETAILS49

16.1 EUT – APPEARANCE VIEW49

16.2 EUT - FRONT VIEW49

16.3 EUT - BACK VIEW.....50

16.4 EUT – OPEN VIEW.....50

16.5 PCB 1 -FRONT VIEW.....51

16.6 PCB 1 - BACK VIEW51

16.7 PCB 2 -FRONT VIEW.....52

16.8 PCB 2-BACK VIEW.....52

FCC ID LABEL53

3 Test Summary

Test Items	Test Requirement	Test Method	Limit / Severity	Result
Maximum peak output power	FCC Part 15:2008	ANSI C63.4: 2003	20dBm	PASS
Restricted Band	FCC Part 15:2008	ANSI C63.4: 2003	Note	PASS
Dwell time	FCC Part 15:2008	ANSI C63.4: 2003	Maximum:0.4 s	PASS
Channel separation	FCC Part 15:2008	ANSI C63.4: 2003	Channel separation at least 1MHz	PASS
Hopping channel No.	FCC Part 15:2008	ANSI C63.4: 2003	As the test data	PASS
20-dB Bandwidth	FCC Part 15:2008	ANSI C63.4: 2003	Note	PASS
RF Exposure Test	FCC Part 15:2008	ANSI C63.4: 2003	Note	PASS
Mains Terminal Disturbance Voltage, 150kHz to 30MHz	FCC Part 15:2008	ANSI C63.4: 2003	N/A	PASS
Radiation Emission, 30MHz to 25GHz	FCC Part 15:2008	ANSI C63.4: 2003	N/A	PASS

Note : denote that for more details of the EUT , please refer to the relating test items as below .

Remark : the methods of measurement in all the test items were according to the FCC Public Notice DA 00-705 .

4 General Information

4.1 Client Information

Applicant: RDI Technology (Shenzhen) Co., Ltd
Address of Applicant: Building C1 Xingtang Industrial Park, East Baishixia,
Fuyong, Baoan, Shenzhen, PRC.

Manufacturer: RDI Technology (Shenzhen) Co., Ltd
Address of Manufacturer: Building C1 Xingtang Industrial Park, East Baishixia,
Fuyong, Baoan, Shenzhen, PRC..

4.2 General Description of E.U.T.

Product description: Digital Wireless Camera
Model No.: CA650M

4.3 Details of E.U.T.

Power Supply: Adapter Input: AC 100-240V ~50/60Hz, 0.5A
Output: DC 5.0V, 1.0A

4.4 Description of Support Units

The EUT has been tested as an independent unit.

4.5 Standards Applicable for Testing

The customer requested FCC tests for a Digital Wireless Camera. The standards used were FCC 15 Paragraph 15.247, Paragraph 15.205, Paragraph 15.207, Paragraph 15.209, Paragraph 15.31, Paragraph 15.33, Paragraph 15.35.

4.6 Test Facility

The test facility is recognized, certified, or accredited by the following organizations:

- **FCC – Registration No.: 880581**

Waltek Services(Shenzhen) Co., Ltd. EMC Laboratory has been registered and fully described in a report filed with the (FCC) Federal Communications Commission. The acceptance letter from the FCC is maintained in our files. Registration 880581, June 24, 2008.

- **IC – Registration No.: IC 7760A**

Waltek Services(Shenzhen) Co., Ltd. EMC Laboratory has been registered and fully described in a report filed with the Industry Canada. The acceptance letter from the Industry Canada is maintained in our files. Registration IC7760A, Aug.03,2010.

4.7 Test Location

All Emissions tests were performed at:-

1/F, Fukangtai Building, West Baima Rd., Songgang Street, Baoan District, Shenzhen 518105, Guangdong, China.

Remark : All the test results of the peripherals were conformed to the Fcc Verification requirements.

4.8 Equipment Used during Test

Equipment Name	Manufacturer Model	Equipment No	Internal No	Specification	Cal. Date	Due Date	Cert. No	Uncertainty
EMC Analyzer	Agilent/ E7405A	MY451149 43	W2008001	9k-26.5GHz	Aug- 03-10	Aug- 02-11	Wws200 81596	±1dB
Trilog Broadband Antenne 30-3000 MHz	SCHWARZB ECK MESS- ELEKTROM/ VULB9163	336	W2008002	30-3000 MHz	Aug- 03-10	Aug- 02-11		±1dB
Broad-band Horn Antenna	SCHWARZB ECK MESS- ELEKTROM/ BBHA 9120D(1201)	667	W2008003	1-18GHz	Aug- 03-10	Aug- 02-11		f< 10 GHz: ±1dB 10GHz<f< 18 GHz: ±1.5dB
Broadband Preamplifier	SCHWARZB ECK MESS- ELEKTROM/ BBV 9718	9718-148	W2008004	0.5-18GHz	Aug- 03-10	Aug- 02-11		±1.2dB
10m Coaxial Cable with N-male Connectors usable up to 25GHz,	SCHWARZB ECK MESS- ELEKTROM/ AK 9515 H	-	-	-	Aug- 03-10	Aug- 02-11		-
10m 50 Ohm Coaxial Cable with N-plug, individual length, usable up to 3(5)GHz, Connector	SCHWARZB ECK MESS- ELEKTROM/ AK 9513				Aug- 03-10	Aug- 02-11		
Positioning Controller	C&C LAB/ CC-C-IF				N/A	N/A		
Color Monitor	SUNSP0/ SP- 14C				N/A	N/A		
Test Receiver	ROHDE&SC HWARZ/ ESPI	101155	W2005001	9k-3GHz	Aug- 03-10	Aug- 02-11	Wws200 80942	±1dB
EMI Receiver	Beijingkehuan	KH3931		9k-1GHz	Aug- 03-10	Aug- 02-11		
Two-Line V-Network	ROHDE&SC HWARZ/ ENV216	100115	W2005002	50Ω/50μH	Aug- 03-10	Aug- 02-11	Wws200 80941	±10%

Equipment Name	Manufacturer Model	Equipment No	Internal No	Specification	Cal. Date	Due Date	Cert. No	Uncertainty
Absorbing Clamp	ROHDE&SC HWARZ/ MDS-21	100205	W2005003	impedance 50 Ω loss: 17 dB	Aug- 03-10	Aug- 02-11	Wws200 80943	± 1 dB
10m 50 Ohm Coaxial Cable with N-plug, individual length, usable up to 3(5)GHz, Connectors	SCHWARZB ECK MESS- ELEKTROM/ AK 9514				Aug- 03-10	Aug- 02-11		
Digital Power Analyzer	Em Test AG/Switzerla nd/ DPA 500	V07451 03095	W2008012	Power: 2000VA Vol-range: 0- 300V Freq_range: 10-80Hz	Aug- 03-10	Aug- 02-11	Wwd200 81185	Voltage distinguish:0 .025% Power_freq distinguish:0 .02Hz
Power Source	Em Test AG/Switzerla nd/ ACS 500	V07451 03096	W2008013	Vol-range: 0- 300V Power_freq: 10-80Hz				
Electrostatic Discharge Simulator	Em Test AG/Switzerla nd/DITO	V07451 03094	W2008005	Contact discharge: 500V-10KV Air diacharge: 500V-16.5KV	Aug- 03-10	Aug- 02-11	Wwc200 82400	7.5A current will be changed in $V_m=1.5V$
RF Generator	TESEQ GmbH/ NSG4070	25781	W2008008	Fraq-range: 9K-1GHz RF voltage: - 60 dBm- +10dBm	Aug- 03-10	Aug- 02-11	Wws200 81890	Power_freq distinguish0. 1Hz RFelectricity distinguish 0.1 B
CDN M- Type	TESEQ GmbH/ CDN M016	25112	W2008009	Voltage correct factor 9.5 dB	Aug- 03-10	Aug- 02-11	Wwc200 82396	150K- 80MHz: ± 1 dB 80- 230MHz:-2- +3dB
EM-Clamp	TESEQ GmbH/ KEMZ 801	25453	W2008010	Freq_range: 0.15-1000 MHz	Aug- 03-10	Aug- 02-11	Wwc200 82397	0.3-400 MHz: ± 4 dB Other freq: ± 5 dB
Attenuator 6dB	TESEQ GmbH/ ATN6050	25365			Aug- 03-10	Aug- 02-11	Wws200 81597	

Equipment Name	Manufacturer Model	Equipment No	Internal No	Specification	Cal. Date	Due Date	Cert. No	Uncertainty
All Modules Generator	SCHAFFNER /6150	34579	W2008006	voltage:200V-4.4KV Pulse current: 100A-2.2KA	Aug-03-10	Aug-02-11	Wwc20082401	voltage: ±10% Pulse current: ±10%
Capacitive Coupling Clamp	SCHAFFNER / CDN 8014	25311			Aug-03-10	Aug-02-11	Wwc20082398	-
Signal and Data Line Coupling Network	SCHAFFNER / CDN 117	25627	W2008011	1.2/50μS	Aug-03-10	Aug-02-11	Wwc20082399	-
AC Power Supply	TONGYUN/ DTDGC-4				Aug-03-10	Aug-02-11	Wws20080944	-
Exposure Level Tester ELT-400	Narda Safety TEST Solutions/2304/03	M-0155	w2008022	Test freq range: 1—400kHz	Aug-03-10	Aug-02-11	Wwd20081191	Test uncertainly: 1—120kHz:±1.83%, 120 kHz-400 kHz: ±4.06%
Magnetic Field Probe 100cm ²	Narda Safety TEST Solutions/2300/90.10	M-1070	w2008021	Test freq range: 1—400kHz				Test uncertainly: 1Hz-10Hz: ±16.2%, 10Hz - 120kHz:±2.2%, 120 kHz-400 kHz: ±4.7%
Active Loop Antenna 10kHz-30MHz	Beijing Dazhi / ZN30900A	-	-	10kHz-30MHz	Aug-03-10	Aug-02-11		±1dB

5 Conducted Emission Test

Test Requirement:	FCC Part15 Paragraph 15.207
Test Method:	Based on FCC Part15 Paragraph 15.207
Test Date:	May 09,2011
Frequency Range:	150kHz to 30MHz
Class:	Class B
Detector:	Peak for pre-scan (9kHz Resolution Bandwidth) Quasi-Peak & Average if maximised peak within 6dB of Average Limit

5.1 Test Equipment

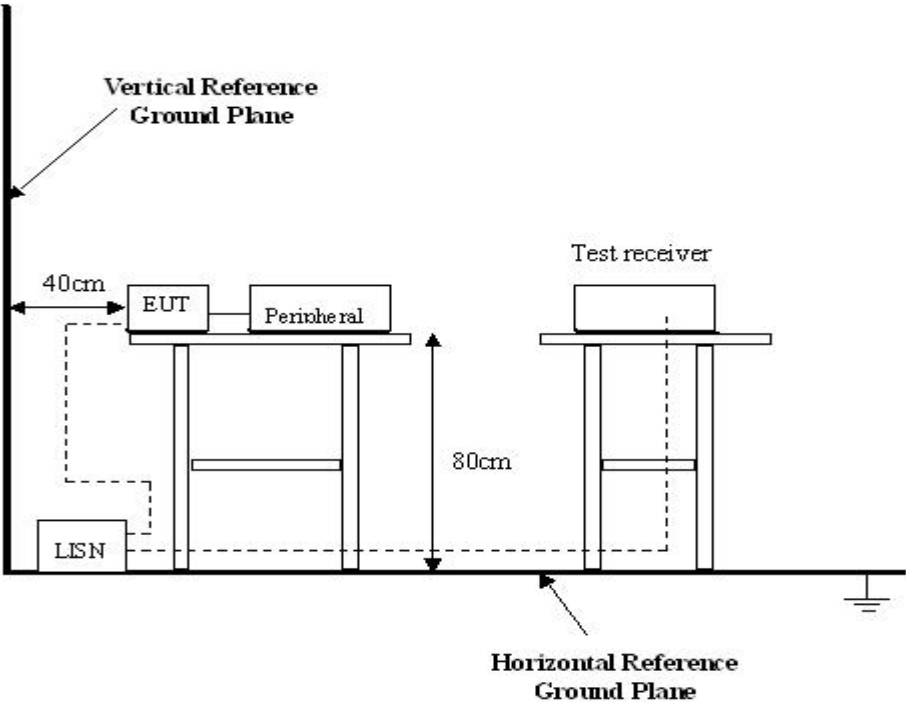
Please refer to Section 5 this report.

5.2 Test Procedure

1. The EUT was connected to LISN and placed on a table.
2. The EUT was tested according to ANSI C63.4:2003. The frequency spectrum from 150kHz to 30MHz was investigated.
3. The maximised peak emissions from the EUT was scanned and measured for both the Live and Neutral Lines. Quasi-peak & average measurements were performed if peak emissions were within 6dB of the average limit line.

5.3 Conducted Test Setup

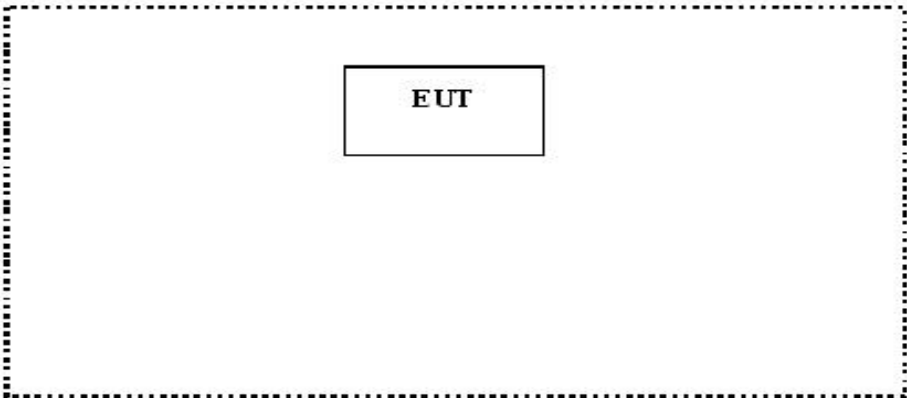
The conducted emission tests were performed using the setup accordance with the ANSI C63.4:2003, The specification used in this report was the FCC Part15 Paragraph 15.207 limits.



5.4 EUT Operating Condition

Operating condition is according to ANSI C63.4:2003.

- A. Setup the EUT and simulators as shown on follow.
- B. Enable RF signal and confirm EUT active.
- C. Modulate output capacity of EUT up to specification.



5.5 Conducted Emission Limits

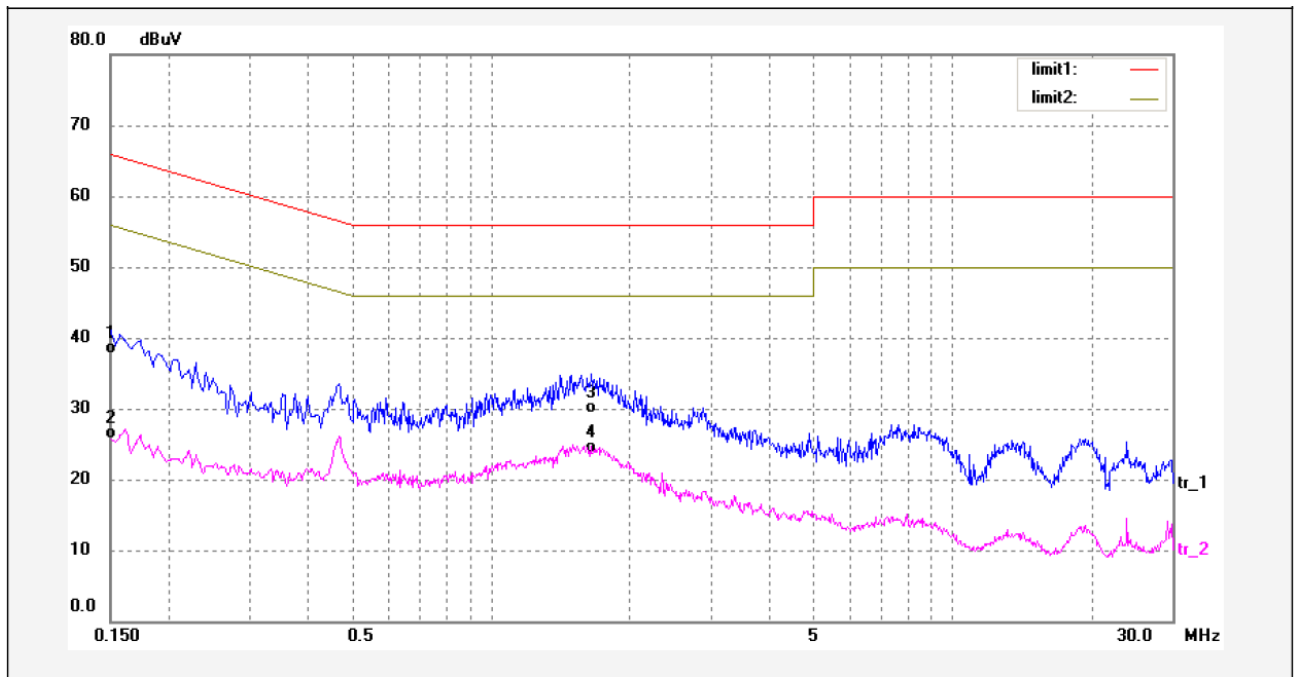
66-56 dB μ V between 0.15MHz & 0.5MHz
 56 dB μ V between 0.5MHz & 5MHz
 60 dB μ V between 5MHz & 30MHz

Note: In the above limits, the tighter limit applies at the band edges.

5.6 Conducted Emission Test Data

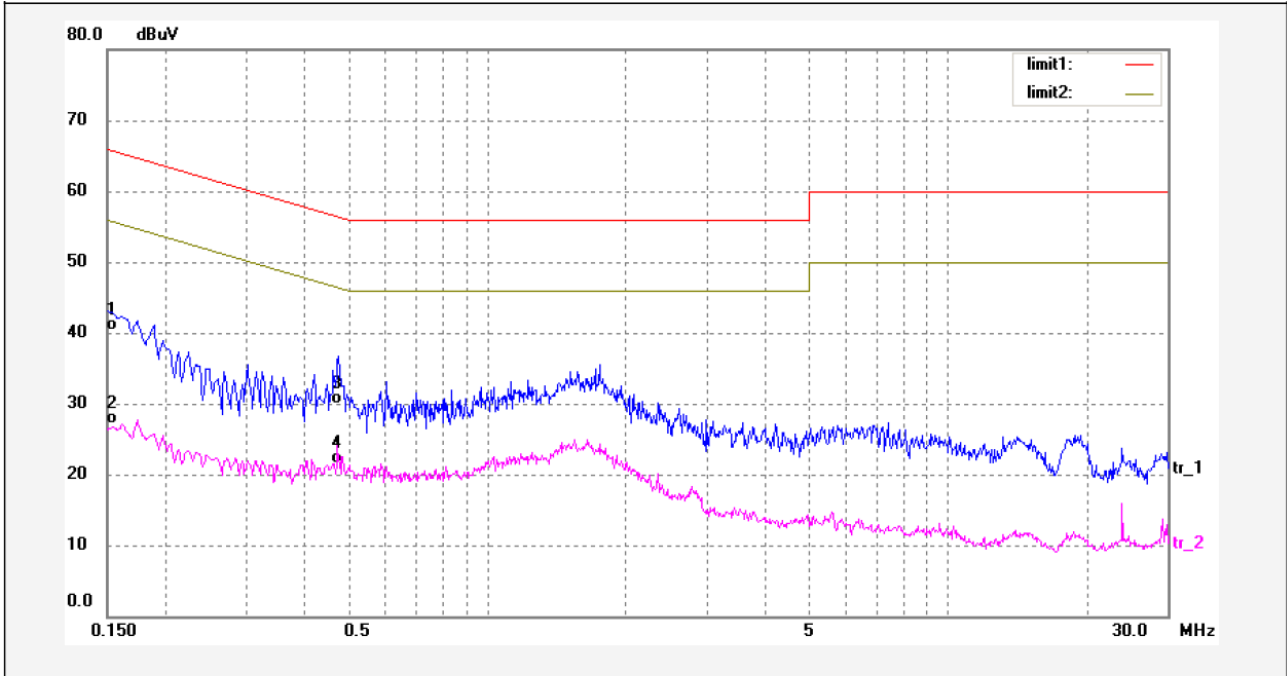
Remark: the EUT was tested in the wireless normal link mode.

Live Line



No.	Freq. (MHz)	Reading (dBuV)	Factor (dB)	Result (dBuV)	Limit dBuV	Margin (dB)	Detector	Remark
1	0.1500	27.08	10.67	37.75	65.99	-28.24	QP	
2	0.1500	15.10	10.67	25.77	55.99	-30.22	AVG	
3	1.6620	17.01	12.21	29.22	56.00	-26.78	QP	
4	1.6620	11.50	12.21	23.71	46.00	-22.29	AVG	

Neutral Line



No.	Freq. (MHz)	Reading (dBuV)	Factor (dB)	Result (dBuV)	Limit dBuV	Margin (dB)	Detector	Remark
1	0.1500	29.63	10.67	40.30	65.99	-25.69	QP	
2	0.1500	16.48	10.67	27.15	55.99	-28.84	AVG	
3	0.4780	18.57	11.36	29.93	56.37	-26.44	QP	
4	0.4780	10.07	11.36	21.43	46.37	-24.94	AVG	

5.7 Conducted Emission Test Setup View



6 Radiation Emission Test

Test Requirement:	FCC Part15 Paragraph 15.247
Test Method:	Based on ANSI 63.4:2003
Test Date:	May 09,2011
Frequency Range:	30MHz to 25GHz
Measurement Distance:	3m
Detector:	Peak for pre-scan (120kHz resolution bandwidth) Quasi-Peak if maximised peak within 6dB of limit

6.1 Test Equipment

Please refer to Section 5 this report.

6.2 Measurement Uncertainty

All measurements involve certain levels of uncertainties, especially in the field of EMC. The factors contributing to uncertainties are spectrum analyzer, cable loss, antenna factor calibration, antenna directivity, antenna factor variation with height, antenna phase center variation, antenna factor frequency interpolation, measurement distance variation, site imperfections, mismatch (average), and system repeatability.

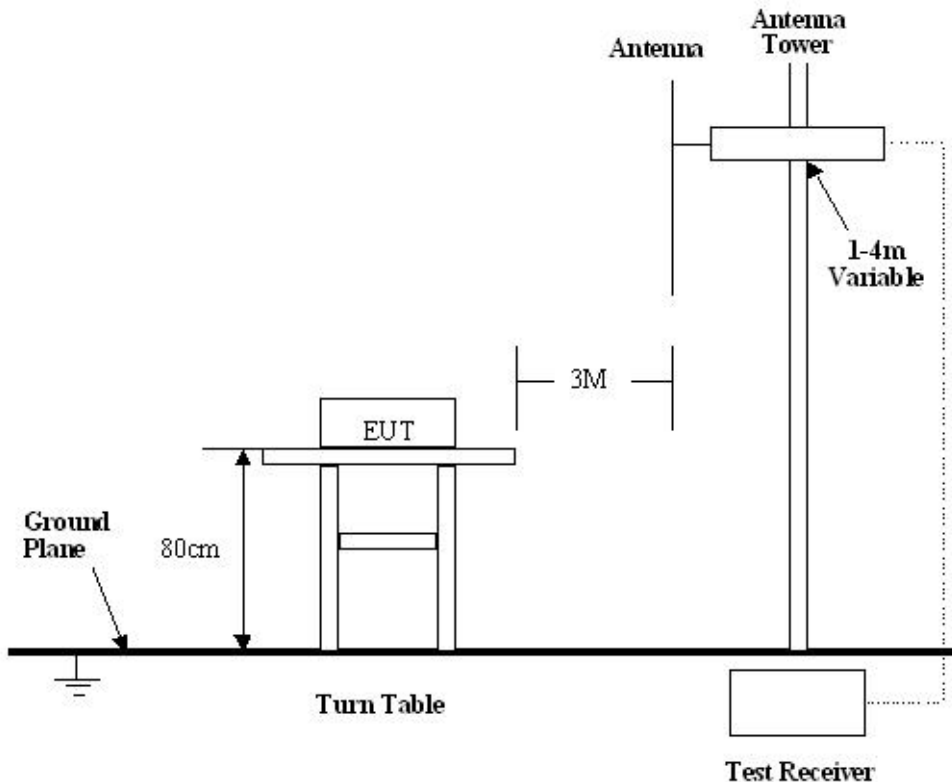
Based on ANSI C63.4:2003, The Treatment of Uncertainty in EMC Measurements, the best estimate of the uncertainty of a radiation emissions measurement at WALTEK SERVICES EMC Lab is +/-5.03 dB.

6.3 Test Procedure

1. The adapter was used in the equipment under test for radiated emissions test.
2. The radiation emission should be tested under the X position. So the data shown was the X position only.
3. Maximizing procedure was performed on the six (6) highest emissions to ensure EUT is compliant with all installation combinations.
4. All data was recorded in the peak and average detection mode.
5. The EUT was under working mode during the final qualification test and the configuration was used to represent the worst case results.

6.4 Radiated Test Setup

The radiated emission tests were performed in the 3m Semi- Anechoic Chamber test site, using the setup accordance with the ANSI C63.4:2003, The specification used in this report was the FCC Part15 Paragraph 15.209 limits and Paragraph 15.247 limits.



6.5 Spectrum Analyzer Setup

According to FCC Part15 Paragraph 15.247 Rules, the system was tested to 25000 MHz. Below 1GHz

- Start Frequency30 MHz
- Stop Frequency1000 MHz
- Sweep Speed Auto
- IF Bandwidth.....120 kHz
- Video Bandwidth100KHz
- Quasi-Peak Adapter Bandwidth120 kHz
- Quasi-Peak Adapter Mode.....Normal
- Resolution Bandwidth100KHz

Above 1GHz

Start Frequency	1000 MHz
Stop Frequency	25000MHz
Sweep Speed	Auto
IF Bandwidth.....	120 kHz
Video Bandwidth	1MHz
Quasi-Peak Adapter Bandwidth	120 kHz
Quasi-Peak Adapter Mode.....	Normal
Resolution Bandwidth	1MHz

6.6 Corrected Amplitude & Margin Calculation

The Corrected Amplitude is calculated by adding the Antenna Factor and Cable Factor, and subtracting the Amplifier Gain from the Amplitude reading. The basic equation is as follows:

$$\text{Corr. Ampl.} = \text{Indicated Reading} + \text{Antenna Factor} + \text{Cable Factor} - \text{Amplifier Gain}$$

The “**Margin**” column of the following data tables indicates the degree of compliance with the applicable limit. For example, a margin of -7dBµV means the emission is 7dBµV below the maximum limit for Class B. The equation for margin calculation is as follows:

$$\text{Margin} = \text{Corr. Ampl.} - \text{Class B Limit}$$

6.7 Summary of Test Results

According to the data in section 6.11, the EUT complied with the FCC Part15 Paragraph 15.247 standards.

6.8 EUT Operating Condition

The same as section 6.4 of this report.

Let the EUT work in test mode and test it.

6.9 Radiated Emissions Limit on Paragraph 15.209

Frequency(MHZ)	Distance(m)	Field strength(dBuV/m)
30-88	3	40.0
88-216	3	43.5
216-960	3	46.0
Above 960	3	54.0

- Note:**
- (1) $RF\ Voltage(dBuV) = 20 \log RF\ Voltage(uV)$
 - (2) In the Above Table, the tighter limit applies at the band edges.
 - (3) Distance refers to the distance in meters between the measuring instrument antenna.
 - (4) The emission limit in this paragraph is based on measurement instrumentation employing an average detector. Measurement using instrumentation with a peak detector function, corresponding to 20dB above the maximum permitted average limit.
 - (5) Above 1GHz, mark a Peak and average measurements for all emissions, Limit for peak is 74dBuV/m, According to Part 15.35(b) and average is 54BuV/m.

6.10 Radiated Emissions Test Result

Formula of conversion factors:the field strength at 3m was established by adding
The meter reading of the spectrum analyzer (which is set to read in units of dBuV/m)
To the antenna correction factor supplied by the antenna manufacturer. The antenna
Correction factors are stated in terms of dB.The gain of the pressletor was accounted
For in the spectrum analyser meter reading.

Example:

Freq(MHz) Meter Reading +ACF=FS

33 20dBuV+10.36dB=30.36dBuV/m @3m

6.11 Radiated Emission Data

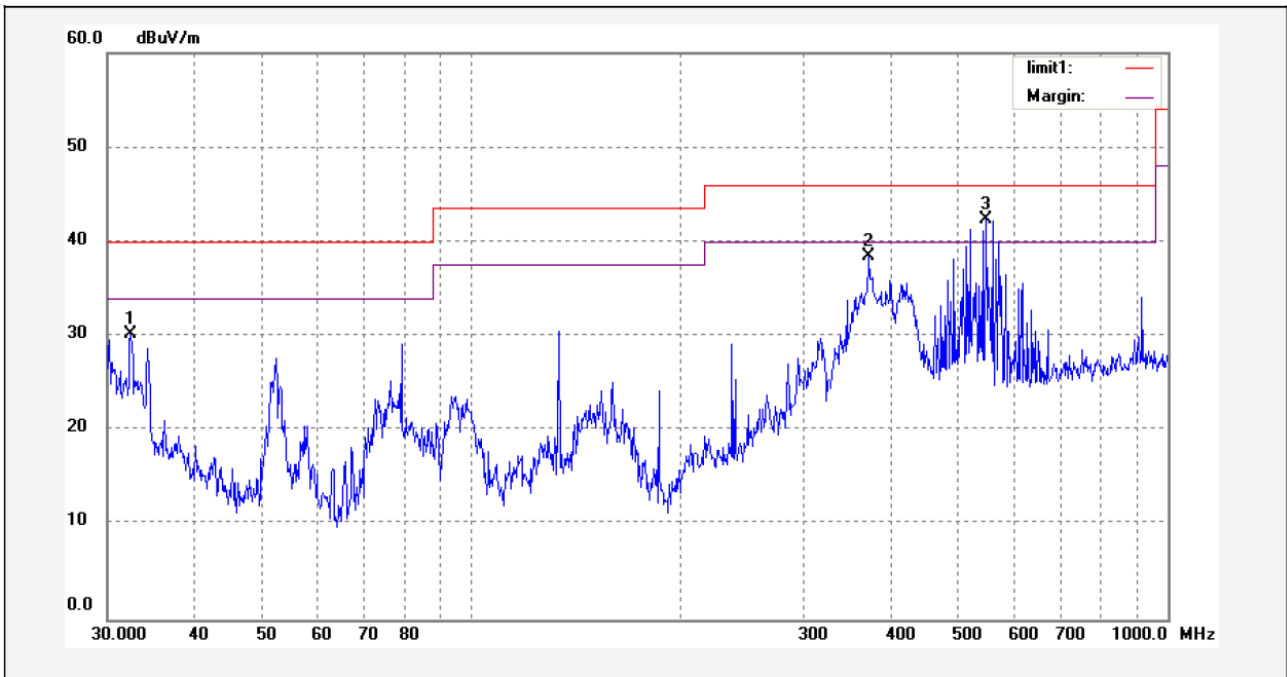
A. Test Item:	Radiated Emission Data
Test Voltage:	AC 120V
Test Mode:	CRX and CTX On
Temperature:	25.5 °C
Humidity:	51%RH
Test Result:	PASS

6.11.1 Test mode: continuously receive mode.

Remark: the EUT was pretested at the high,middle and low channel, and the worse case was the low Channel,so the data show was the low channel only.

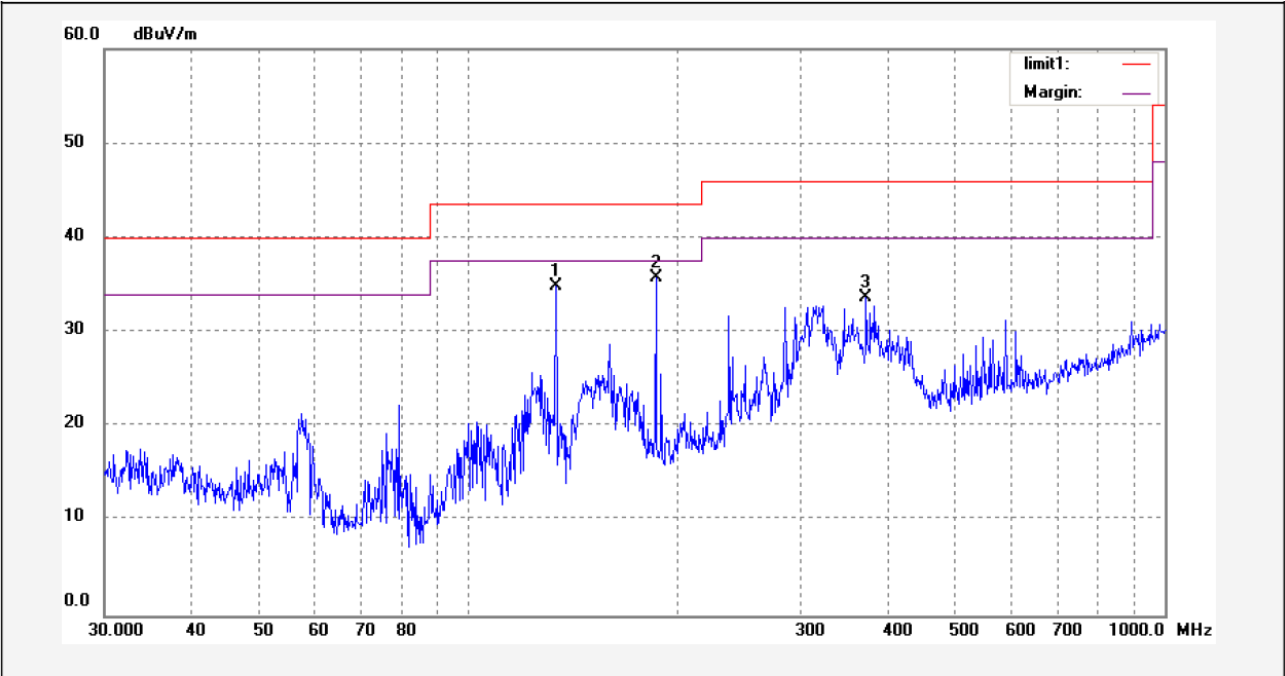
Test frequency : 30-1000MHz radiation test data:

Vertical



No.	Freq. (MHz)	Reading (dBuV/m)	Factor (dB)	Result (dBuV/m)	Limit (dBuV/m)	Margin (dB)	Detector	Remark
1	32.4109	13.92	16.26	30.18	40.00	-9.82	peak	
2	372.5748	18.14	20.30	38.44	46.00	-7.56	peak	
3	548.3600	18.92	23.44	42.36	46.00	-3.64	peak	

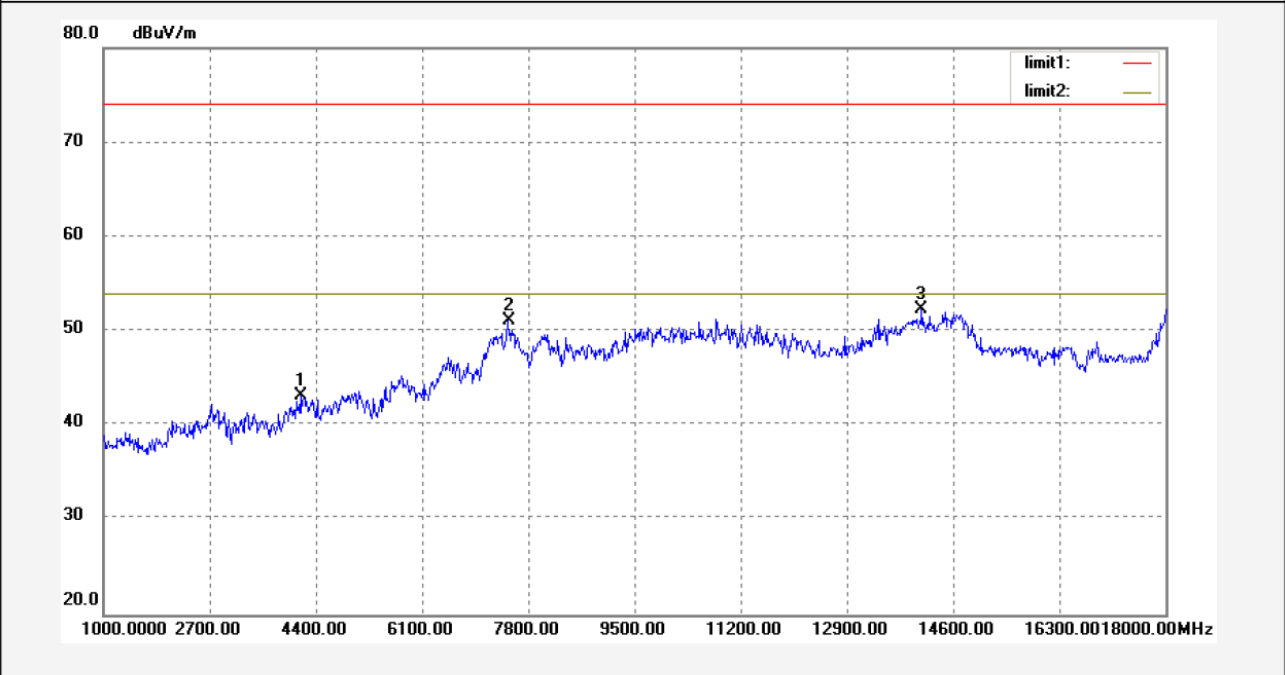
Horizontal



No.	Freq. (MHz)	Reading (dBuV/m)	Factor (dB)	Result (dBuV/m)	Limit (dBuV/m)	Margin (dB)	Detector	Remark
1	133.5493	21.93	12.93	34.86	43.50	-8.64	peak	
2	185.8143	23.61	12.20	35.81	43.50	-7.69	peak	
3	372.5748	13.44	20.28	33.72	46.00	-12.28	peak	

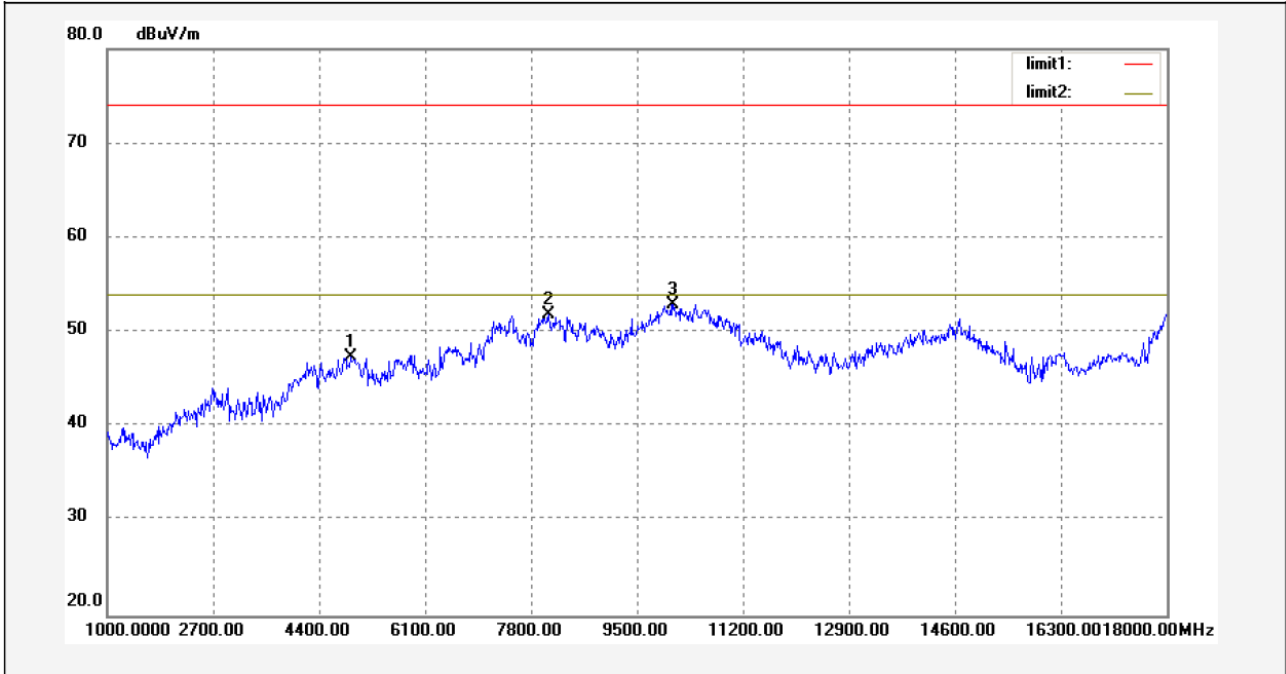
Test frequency: Above 1GHz radiation test data:

Vertical



No.	Freq. (MHz)	Reading (dBuV/m)	Factor (dB)	Result (dBuV/m)	Limit (dBuV/m)	Margin (dB)	Detector	Remark
1	4151.303	40.37	2.87	43.24	74.00	-30.76	peak	
2	7472.946	38.03	13.07	51.10	74.00	-22.90	peak	
3	14099.198	29.24	23.07	52.31	74.00	-21.69	peak	

Horizontal



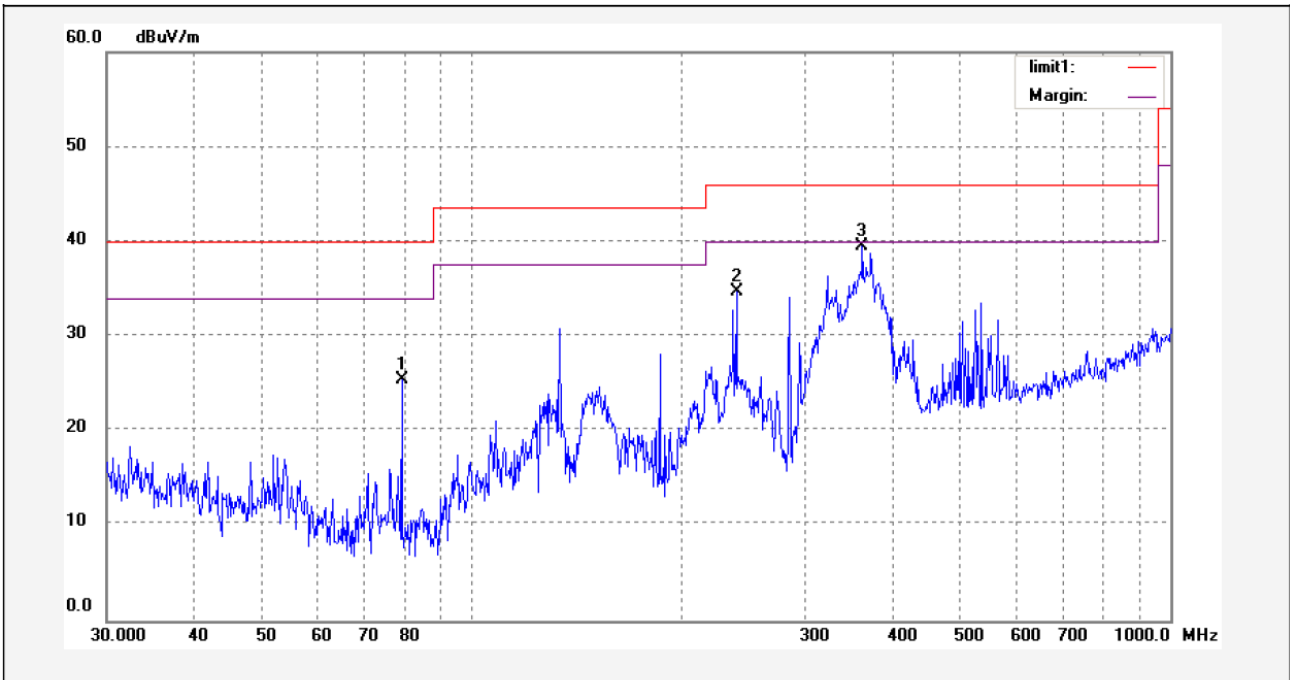
No.	Freq. (MHz)	Reading (dBuV/m)	Factor (dB)	Result (dBuV/m)	Limit (dBuV/m)	Margin (dB)	Detector	Remark
1	4900.802	38.71	8.62	47.33	74.00	-26.67	peak	
2	8086.172	33.74	18.19	51.93	74.00	-22.07	peak	
3	10079.158	32.38	20.58	52.96	74.00	-21.04	peak	

6.11.2 Test mode: continuously transmit mode.

Remark: the EUT was tested in the continuously transmit mode.

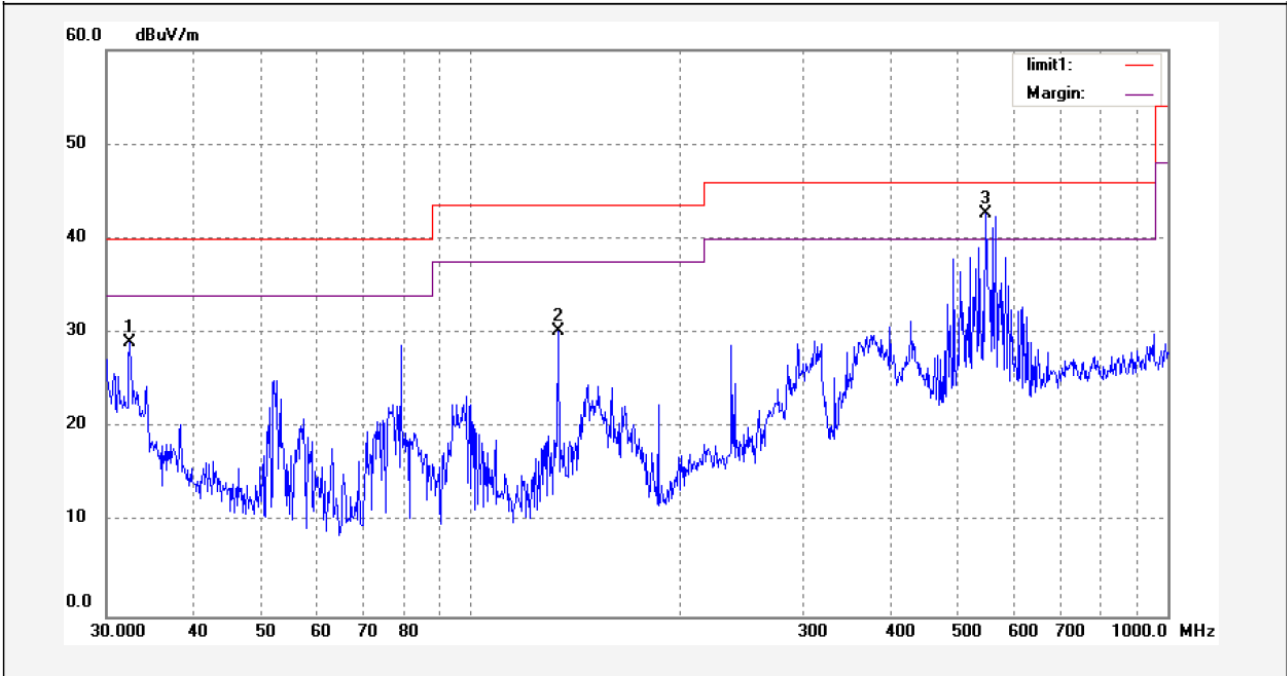
Test frequency : 30-1000MHz radiation test data:

Vertical



No.	Freq. (MHz)	Reading (dBuV/m)	Factor (dB)	Result (dBuV/m)	Limit (dBuV/m)	Margin (dB)	Detector	Remark
1	79.3970	16.22	9.19	25.41	40.00	-14.59	peak	
2	239.3020	17.93	16.83	34.76	46.00	-11.24	peak	
3	362.2480	19.43	20.15	39.58	46.00	-6.42	peak	

Horizontal



No.	Freq. (MHz)	Reading (dBuV/m)	Factor (dB)	Result (dBuV/m)	Limit (dBuV/m)	Margin (dB)	Detector	Remark
1	32.4109	12.80	16.26	29.06	40.00	-10.94	peak	
2	133.5493	17.35	12.88	30.23	43.50	-13.27	peak	
3	548.3600	19.19	23.44	42.63	46.00	-3.37	peak	

Test frequency : Above 1000MHz radiation Fundamental and Harmonic test data:

Frequency (MHz)	Detect or	Antenna Polarization	Emission Level (dBuV/m)	Limit (dBuV/m)	Margin (dB)	Antenna Height (m)	Turntable Angle (°)
Low frequency							
2406	AV	Vertical	96.15		(Fund.)	1.1	10
4812	AV	Vertical	51.24	54.00	2.76	1.1	10
7218	AV	Vertical	43.61	54.00	10.39	1.1	20
9624	AV	Vertical	42.68	54.00	11.32	1.1	15
12030	AV	Vertical	40.95	54.00	13.05	1.1	20
14436	AV	Vertical	40.69	54.00	13.31	1.0	120
16842	AV	Vertical	40.74	54.00	13.26	1.0	20
19248	AV	Vertical	39.44	54.00	14.56	1.1	10
21654	AV	Vertical	39.23	54.00	14.77	1.0	110
24060	AV	Vertical	38.89	54.00	15.11	1.0	40
2406	AV	Horizontal	92.36		(Fund.)	1.0	55
4812	AV	Horizontal	48.63	54.00	5.37	1.0	40
7218	AV	Horizontal	40.69	54.00	13.31	1.0	20
9624	AV	Horizontal	39.85	54.00	14.15	1.1	110
12030	AV	Horizontal	39.64	54.00	14.65	1.1	40
14436	AV	Horizontal	38.47	54.00	15.53	1.0	20
16842	AV	Horizontal	36.71	54.00	17.29	1.2	210
19248	AV	Horizontal	34.75	54.00	19.25	1.1	15
21654	AV	Horizontal	34.58	54.00	19.42	1.1	10
24060	AV	Horizontal	33.85	54.00	20.15	1.0	10
2406	PK	Vertical	111.21		(Fund.)	1.0	10
4812	PK	Vertical	67.89	74.00	6.11	1.0	150
7218	PK	Vertical	54.85	74.00	19.15	1.0	110
9624	PK	Vertical	49.26	74.00	24.74	1.1	150
12030	PK	Vertical	48.28	74.00	25.72	1.1	10
14436	PK	Vertical	47.78	74.00	26.22	1.1	140
16842	PK	Vertical	46.33	74.00	27.67	1.1	80
19248	PK	Vertical	46.39	74.00	27.61	1.1	170
21654	PK	Vertical	45.21	74.00	28.79	1.0	110

24060	PK	Vertical	40.63	74.00	33.37	1.0	15
2406	PK	Horizontal	105.85		(Fund.)	1.1	110
4812	PK	Horizontal	63.66	74.00	10.34	1.0	60
7218	PK	Horizontal	54.88	74.00	19.12	1.1	30
9624	PK	Horizontal	45.88	74.00	28.11	1.1	30
12030	PK	Horizontal	44.84	74.00	29.16	1.1	10
14436	PK	Horizontal	44.76	74.00	29.24	1.0	90
16842	PK	Horizontal	44.26	74.00	29.74	1.1	120
19248	PK	Horizontal	44.26	74.00	29.74	1.0	110
21654	PK	Horizontal	42.37	74.00	31.63	1.0	50
24060	PK	Horizontal	38.95	74.00	35.05	1.1	130
Middle frequency							
2440	AV	Vertical	95.02		(Fund.)	1.1	10
4880	AV	Vertical	48.91	54.00	5.09	1.1	10
7320	AV	Vertical	41.36	54.00	12.64	1.0	60
9760	AV	Vertical	39.68	54.00	14.32	1.1	10
12200	AV	Vertical	37.85	54.00	16.15	1.2	20
14640	AV	Vertical	36.66	54.00	17.34	1.1	100
17080	AV	Vertical	35.98	54.00	18.02	1.1	80
19520	AV	Vertical	35.32	54.00	18.68	1.1	10
21960	AV	Vertical	33.43	54.00	20.57	1.1	10
24400	AV	Vertical	30.21	54.00	23.79	1.2	90
2440	AV	Horizontal	91.25		(Fund.)	1.1	10
4880	AV	Horizontal	45.63	54.00	8.37	1.0	90
7320	AV	Horizontal	40.63	54.00	13.37	1.1	120
9760	AV	Horizontal	38.99	54.00	15.01	1.0	120
12200	AV	Horizontal	35.36	54.00	18.64	1.1	50
14640	AV	Horizontal	30.25	54.00	23.75	1.0	20
17080	AV	Horizontal	29.25	54.00	24.75	1.1	120
19520	AV	Horizontal	29.28	54.00	24.72	1.1	70
21960	AV	Horizontal	29.21	54.00	24.79	1.0	10
24400	AV	Horizontal	28.99	54.00	25.01	1.1	60
2440	PK	Vertical	109.54		(Fund.)	1.1	70
4880	PK	Vertical	66.97	74.00	7.03	1.0	80

7320	PK	Vertical	50.34	74.00	23.66	1.0	25
9760	PK	Vertical	42.96	74.00	31.04	1.1	140
12200	PK	Vertical	38.89	74.00	35.11	1.1	100
14640	PK	Vertical	36.10	74.00	38.90	1.0	110
17080	PK	Vertical	32.03	74.00	41.97	1.1	120
19520	PK	Vertical	30.21	74.00	43.79	1.0	120
21960	PK	Vertical	29.65	74.00	44.35	1.1	30
24400	PK	Vertical	28.25	74.00	45.75	1.1	120
2440	PK	Horizontal	104.25		(Fund.)	1.0	110
4880	PK	Horizontal	65.91	74.00	8.09	1.0	140
7320	PK	Horizontal	45.58	74.00	28.42	1.1	90
9760	PK	Horizontal	42.63	74.00	31.37	1.1	60
12200	PK	Horizontal	39.36	74.00	34.64	1.0	70
14640	PK	Horizontal	37.44	74.00	36.56	1.1	150
17080	PK	Horizontal	34.21	74.00	39.79	1.1	10
19520	PK	Horizontal	38.54	74.00	35.46	1.0	50
21960	PK	Horizontal	35.96	74.00	38.04	1.1	60
24400	PK	Horizontal	33.94	74.00	40.06	1.0	75
High frequency							
2476	AV	Vertical	94.96		(Fund.)	1.1	250
4952	AV	Vertical	51.17	54.00	2.83	1.1	10
7428	AV	Vertical	43.65	54.00	10.35	1.1	10
9904	AV	Vertical	38.69	54.00	15.31	1.0	40
12380	AV	Vertical	33.65	54.00	20.35	1.1	10
14856	AV	Vertical	32.26	54.00	21.74	1.0	60
17332	AV	Vertical	30.62	54.00	23.38	1.1	60
19808	AV	Vertical	30.13	54.00	23.87	1.1	80
22284	AV	Vertical	30.02	54.00	23.98	1.0	50
24760	AV	Vertical	28.54	54.00	25.46	1.1	220
2476	AV	Horizontal	89.69		(Fund.)	1.2	15
4952	AV	Horizontal	48.66	54.00	5.34	1.1	120
7428	AV	Horizontal	42.95	54.00	11.05	1.0	80
9904	AV	Horizontal	39.12	54.00	14.88	1.1	80
12380	AV	Horizontal	36.88	54.00	17.12	1.2	80

14856	AV	Horizontal	36.57	54.00	17.43	1.1	10
17332	AV	Horizontal	33.69	54.00	20.31	1.1	120
19808	AV	Horizontal	32.55	54.00	21.45	1.2	80
22284	AV	Horizontal	32.22	54.00	21.78	1.1	90
24760	AV	Horizontal	30.56	54.00	23.44	1.1	40
2476	PK	Vertical	111.85		(Fund.)	1.0	50
4952	PK	Vertical	67.81	74.00	6.19	1.1	80
7428	PK	Vertical	45.66	74.00	28.34	1.1	120
9904	PK	Vertical	43.21	74.00	31.79	1.1	60
12380	PK	Vertical	38.65	74.00	35.35	1.1	90
14856	PK	Vertical	36.87	74.00	37.13	1.0	90
17332	PK	Vertical	36.36	74.00	37.64	1.0	50
19808	PK	Vertical	35.66	74.00	38.34	1.1	80
22284	PK	Vertical	34.73	74.00	39.27	1.0	90
24760	PK	Vertical	30.36	74.00	43.64	1.1	90
2476	PK	Horizontal	106.32		(Fund.)	1.1	110
4952	PK	Horizontal	62.36	74.00	11.64	1.2	90
7428	PK	Horizontal	48.66	74.00	25.34	1.0	60
9904	PK	Horizontal	43.52	74.00	30.48	1.1	90
12380	PK	Horizontal	38.69	74.00	35.31	1.1	10
14856	PK	Horizontal	36.99	74.00	37.01	1.0	50
17332	PK	Horizontal	36.41	74.00	37.59	1.1	60
19808	PK	Horizontal	35.63	74.00	38.37	1.2	40
22284	PK	Horizontal	34.14	74.00	39.86	1.1	120
24760	PK	Horizontal	30.34	74.00	40.66	1.2	85

7 Antenna Requirement

According to the FCC Part 15 Paragraph 15.203, an intentional radiator shall be designed to ensure that no antenna other than that furnished by the responsible party shall be used with the device. The use of a permanently attached antenna to the intentional radiator shall be considered sufficient to comply with the provisions of this section. This product has a permanent antenna, fulfill the requirement of this section.

8 Maximum Peak Output Power

Test Requirement:	FCC Part15 Paragraph 15.247
Test Method:	Based on ANSI 63.4:2003
Test Date:	May 09,2011
Test mode:	Compliance test in the worse case: Tx Lower/Tx Middle/Tx Upper
Requirements:	Regulation 15.247(b) The limit of Maximum Peak Output Power Measurement is 0.125W

Test procedure:

The following test procedure as below:

The transmitter output (antenna port) was connected to the spectrum analyzer.EUT and its simulators are placed on a table, let EUT working in test mode,then test it.

The bandwidth of the fundamental frequency was measured with the spectrum analyser using 100kHz RBW and 100kHz VBW.

Test Result: The unit does meet the FCC requirements.

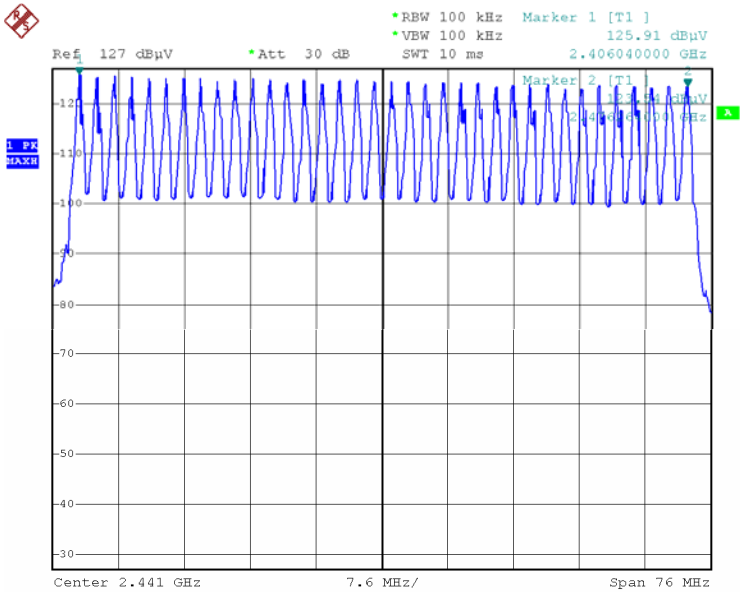
Test Channel	Fundamental Frequency(MHz)	Output Power (mW)	Limit (W)	Power output level
Lower	2406	32.69	0.125	conducted
Middle	2440	34.84	0.125	conducted
Upper	2476	34.84	0.125	conducted

Note: The EUT uses 36 channels ,and according to 47 CFR Part 15 Subpart C Section 15.247 (b),the the maximum allowable power for this device is 0.125W.

9 Hopping Channel Number

Test Requirement: FCC Part15 C
 Test Method: Based on FCC Part15 Paragraph 15.247
 Test Date: May 09,2011
 Test mode: The EUT work in test mode(Tx) and test it
 Requirements: Regulation 15.247(b) For frequency hopping systems operating
 In the 2400-2483.5MHz band employing at least 15 hopping
 channels.
 Test result: The total number of channels would be 36 channels.
 The unit does meet the FCC requirements.

Please refer the graph as below:



10 Frequency Separated

The requirements in this clause are only applicable to equipment using frequency hopping spread spectrum (FHSS) modulation.

Channel Separated

Definition: A hopping channel is any of the centre frequencies defined within the hopping sequence of a FHSS system.

Limit: Non-adaptive frequency hopping system shall make use of non-overlapping channels separated by the channel bandwidth as measured at 20dB below peak power.

The hopping channels defined within a hopping sequence shall be at least 1MHz apart(channel separation)

Operating Environment:

Temperature: 25.50 °C
 Humidity: 51 % RH
 Barometric Pressure: 1012 mbar

EUT Operation Condition:

The EUT was programmed to be in continuously transmitting mode.

Test Result: PASS

Test Channel	Channel Separation	PASS/FAIL
Lower Channels	2MHz	Pass
Middle Channels	2MHz	Pass
Upper Channels	2MHz	Pass

Please refer to the below photos for more details

Lower Channel



Middle Channel



Upper Channel



11 Dwell time

The dwell time is the time spent at a particular frequency during any single hop.

Limit: the maximum dwell time shall be less than 0.4s.

Operating Environment:

Temperature: 25.5 °C

Humidity: 51 % RH

Barometric Pressure: 1012 mbar

EUT Operation Condition:

The EUT was programmed to be in continuously transmitting mode.

11.2 Test Procedure

The EUT output antenna port was connected to the spectrum analyzer. Set RBW of spectrum analyzer to 1MHz and VBW to 1MHz, and the frequency span to zero span, measure the maximum time duration of one single pulse. So, the Dwell Time can be calculated as follows:

$$T = T_{\text{on-time}} * N_{\text{times}} / 1S * 0.4 * 36 \leq 0.4S.$$

11.3 Test Result: PASS

Please refer to the below photos for more details.

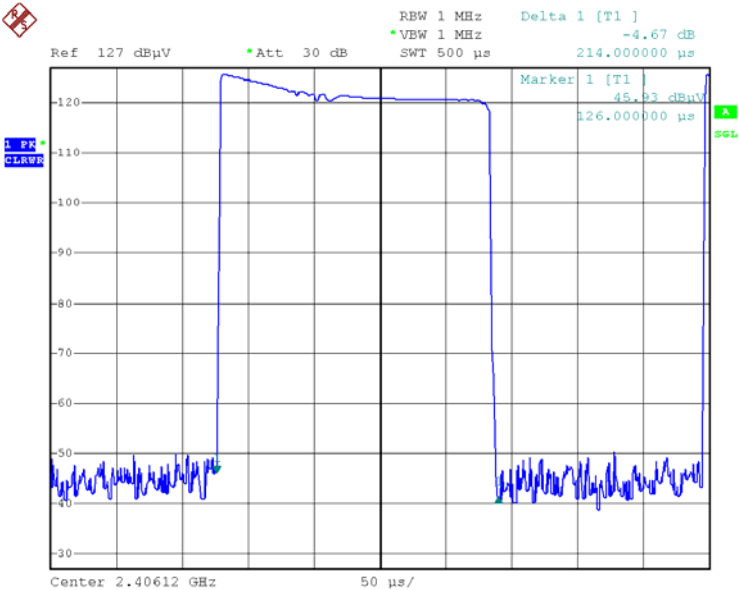
Channel 2406MHz

Dwell time of each occupation in this channel as follows:

$$0.000214 \times 600 / 1S \times 0.4 \times 36 = 0.1849 < 0.4S$$

Test Result: PASS

The Results are not be greater than 0.4 seconds.

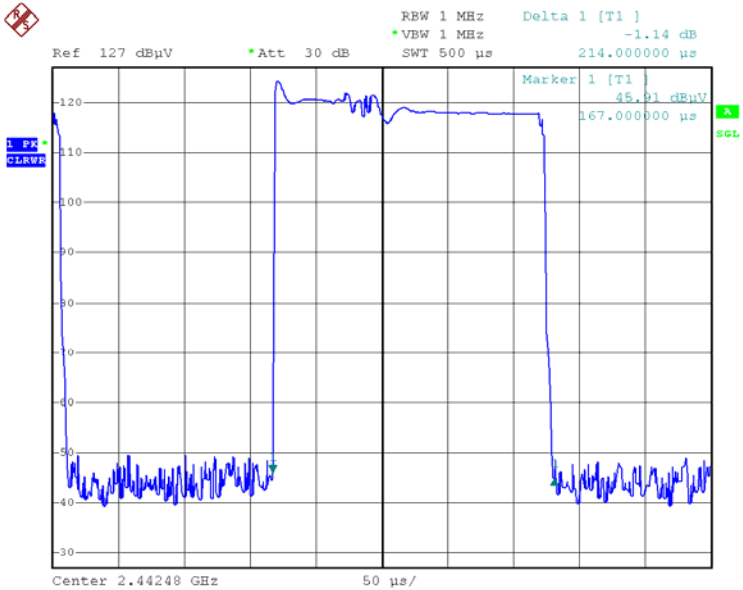


Channel 2442MHz

Dwell time of each occupation in this channel as follows:
 $0.000214 * 600 / 1S * 0.4 * 36 = 0.1849 < 0.4S$

Test Result: PASS

The Results are not be greater than 0.4 seconds.



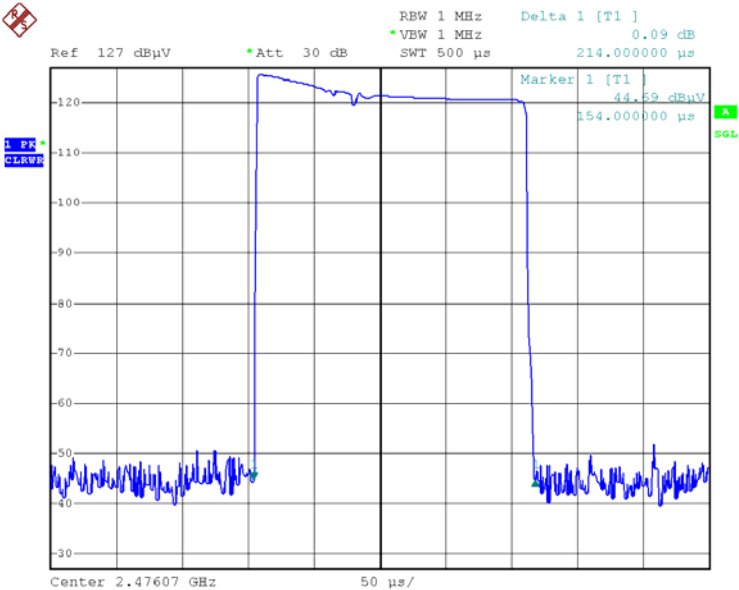
Channel 2476MHz

Dwell time of each occupation in this channel as follows:

$$0.000214 * 600 / 1S * 0.4 * 36 = 0.1849 < 0.4S$$

Test Result: PASS

The Results are not be greater than 0.4 seconds.



12 20-dB Bandwidth

Test Requirement: FCC Part15 C
 Test Method: Based on FCC Part15 Paragraph 15.247
 Test Date: May 09,2011
 Test mode: The EUT work in test mode(Tx) and test it

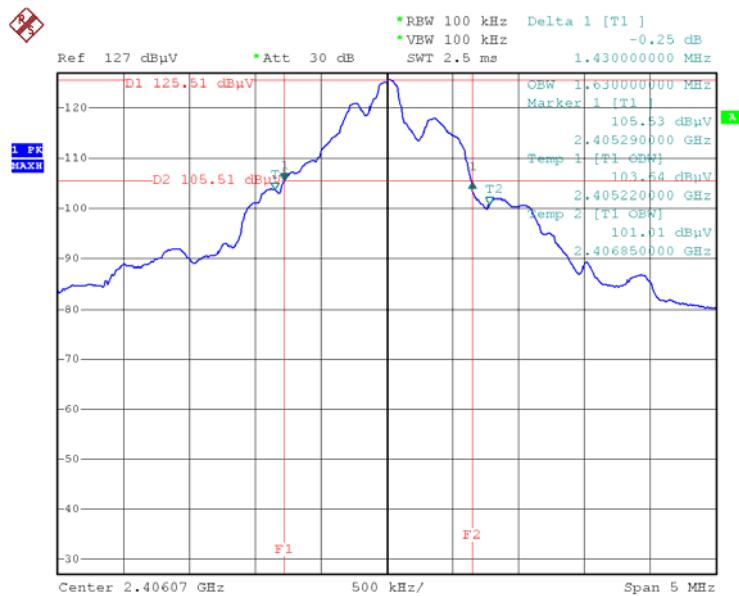
Test Procedure

1. The transmitter output (antenna port) was connected to the spectrum analyzer.
2. The bandwidth of the fundamental frequency was measure by spectrum analyser with 100KHz RBW and 100KHz VBW.The 20dB bandwidth is defined as the total spectrum the power of which is higher than peak power 20dB.

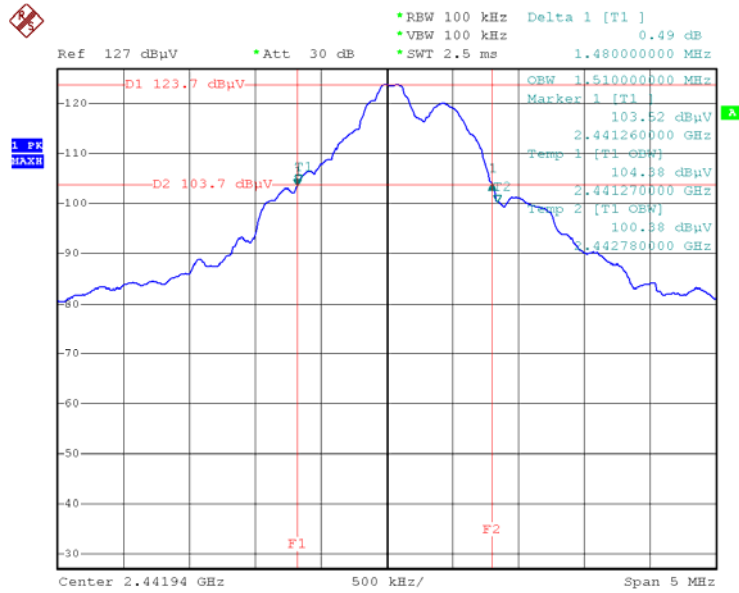
Test Result

Please refer the graph as below:

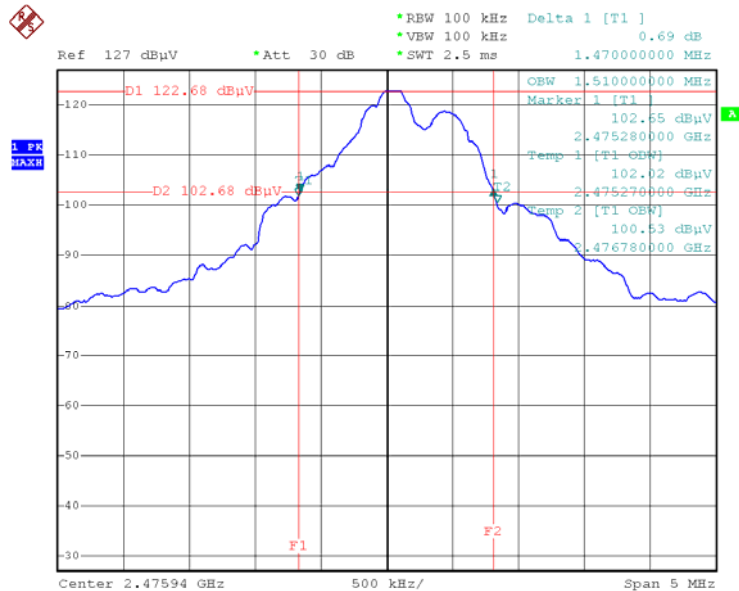
Lower Channel 2406MHz



Middle Channel 2442MHz



Upper Channel 2476MHz



13 Radiated spurious emissions into adjacent restricted band

Test Requirement:	FCC Part15 Paragraph 15.205
Test Method:	Based on FCC Part 15 Paragraph 15.247
Test Date:	May 09,2011
Requirements:	The EUT work in test mode(Tx) and test it

Requiments:

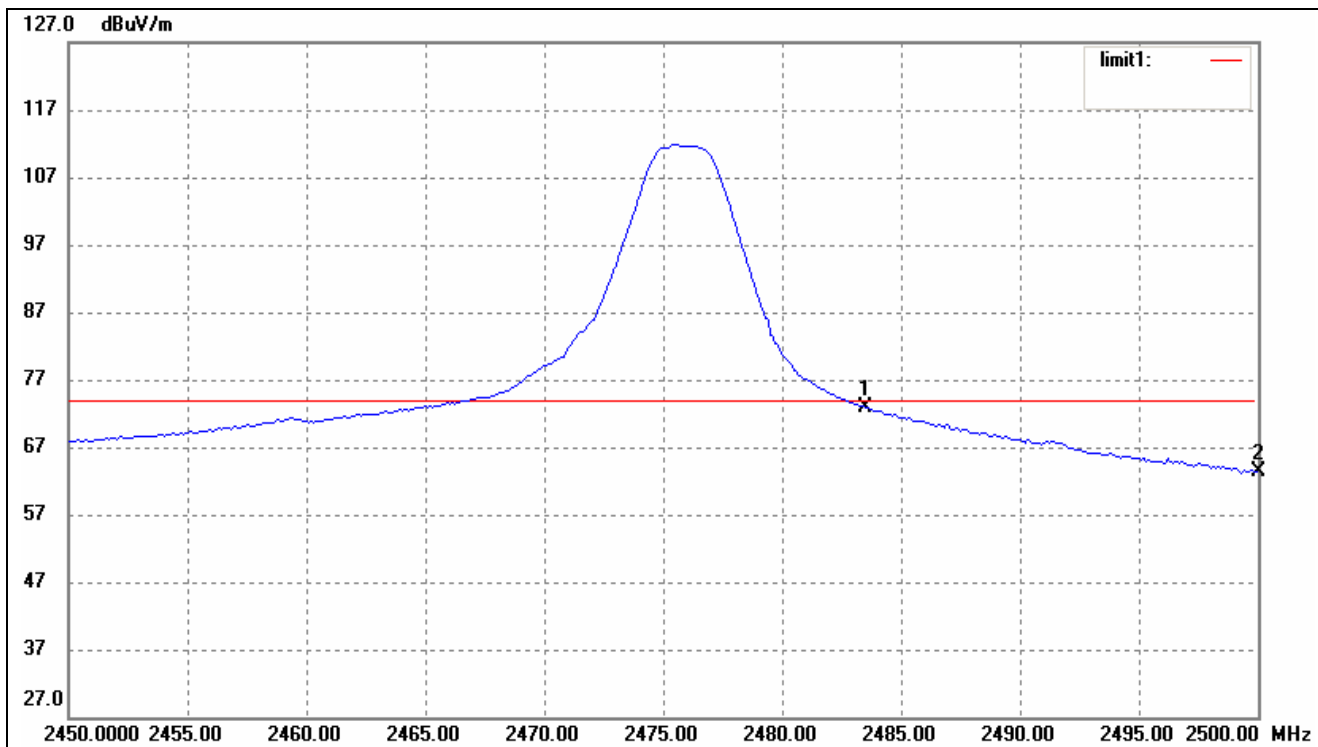
emissions that fall in the restricted bands(15.205).Above 1000MHz, compliance with the emissions limits in section 15.209 shall be demonstrated based on the average value of the measured emissions,The provisions in section 15.35 apply to these measurements.

Test procedure:

An in band field strength measurement of the fundamental emission using the RBW and detector function required by C63.4-2003 and FCC Rules.The procedure was repeated with an average detector and a plot made.The calculated field strength in the adjacent restricted band is presented below.

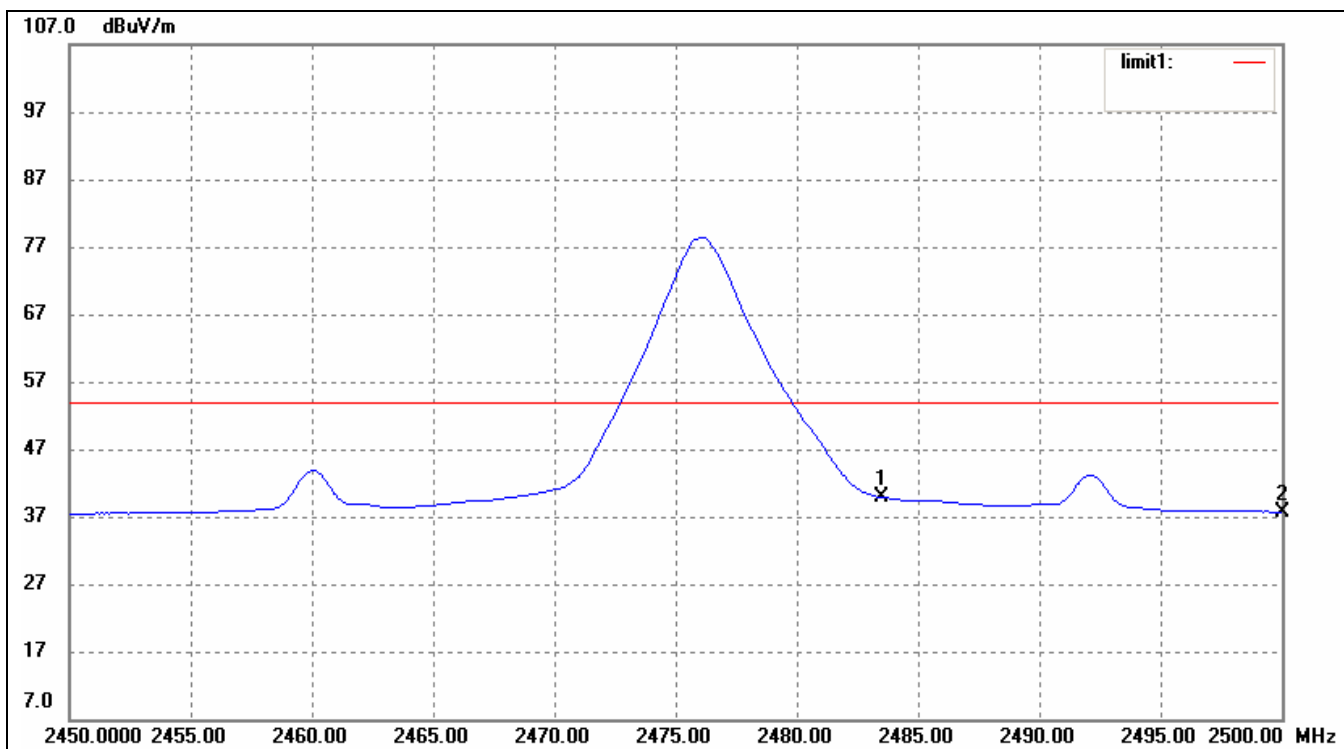
Remark: the test item was tested by the radiation function, and the worse case was found in the vertical polaraization, so the data show was the vertical polaraization only.

Upper bandedge/ restricted band (Peak Value)



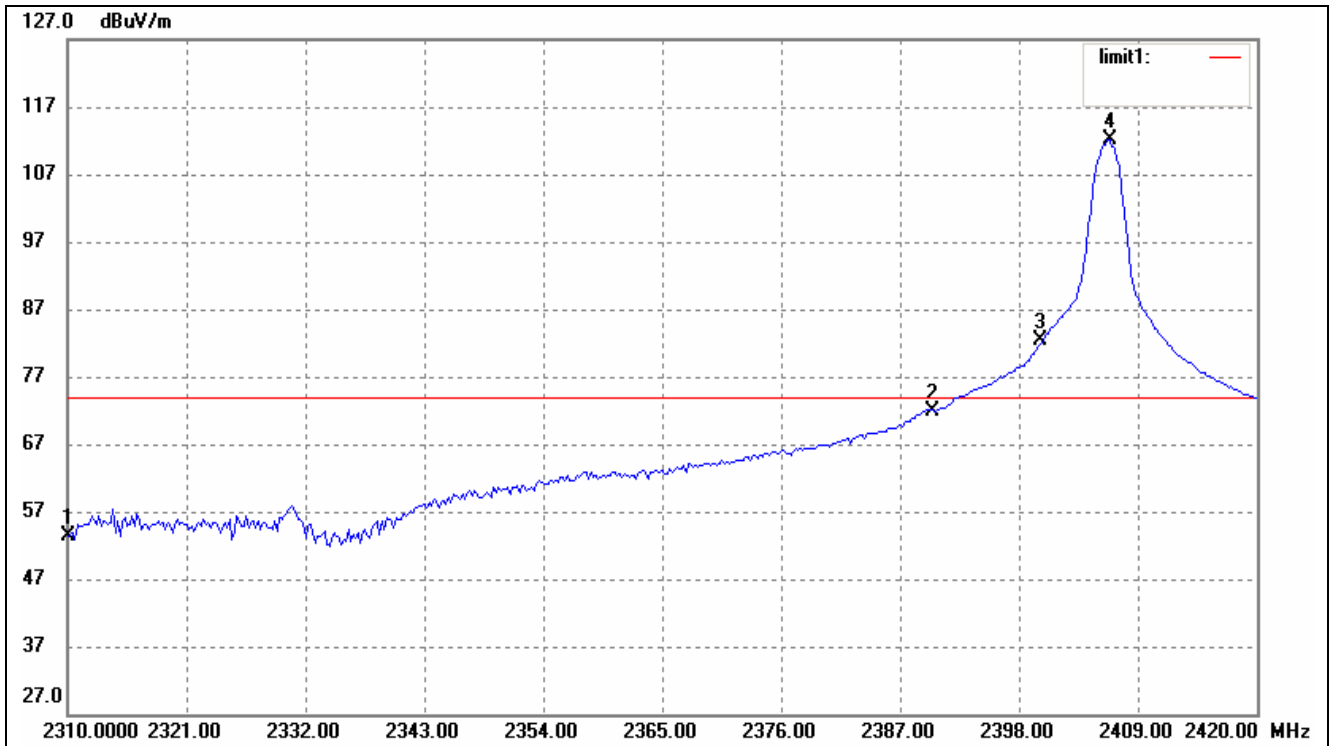
No.	Frequency (MHz)	Reading (dBuV/m)	Correct dB/m	Result (dBuV/m)	Limit (dBuV/m)	Margin (dB)	Degree ()	Height (cm)	Remark
1	2483.500	79.92	-7.13	72.79	74.00	-1.21			peak
2	2500.000	70.39	-7.08	63.31	74.00	-10.69			peak

Upper bandedge/ restricted band (Average Value)



No.	Frequency (MHz)	Reading (dBuV/m)	Correct dB/m	Result (dBuV/m)	Limit (dBuV/m)	Margin (dB)	Degree ()	Height (cm)	Remark
1	2483.500	46.97	-7.13	39.84	54.00	-14.16			peak
2	2500.000	44.79	-7.08	37.71	54.00	-16.29			peak

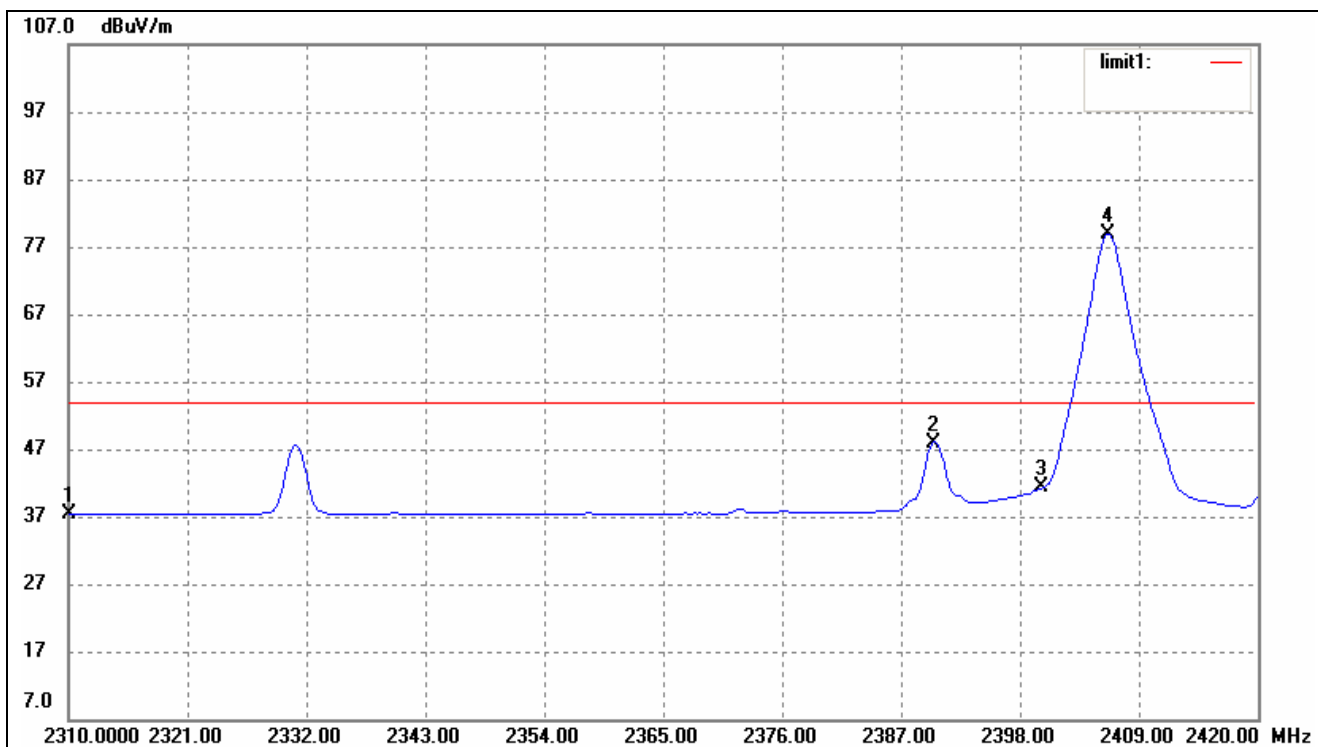
Lower Bandedge/ Restricted Band (Peak Value)



No.	Frequency (MHz)	Reading (dBuV/m)	Correct dB/m	Result (dBuV/m)	Limit (dBuV/m)	Margin (dB)	Degree ()	Height (cm)	Remark
1	2310.000	60.78	-7.51	53.27	74.00	-20.73			peak
2	2390.000	79.30	-7.34	71.96	74.00	-2.04			peak
3	2400.000	89.78	-7.31	82.47	92.20	-9.73			peak
4	2406.360	119.50	-7.30	112.20	Fund.	----			peak

Remark: the limit of mark3 is the Fund.-20 dB, and the Fund. Is 112.20dBuv/m, so the limit of the mark 3 is 92.20 dBuv/m.

Lower Bandedge/ Restricted Band (Average Value)



No.	Frequency (MHz)	Reading (dBuV/m)	Correct dB/m	Result (dBuV/m)	Limit (dBuV/m)	Margin (dB)	Degree ()	Height (cm)	Remark
1	2310.000	44.83	-7.51	37.32	54.00	-16.68			peak
2	2390.000	55.34	-7.34	48.00	54.00	-6.00			peak
3	2400.000	48.73	-7.31	41.42	54.00	-12.58			peak
4	2406.140	86.19	-7.30	78.89	Fund.	----			peak

14 RF Exposure Test

Test Requirement:	FCC Part 2 Subpart J
Test Method:	Based on FCC Part 15 Paragraph 15.247
Test Date:	May 09,2011
Requirements:	The EUT work in test mode(Tx) and test it

Requiments:

Systems operating under the provisions of this section shall be operated in a manner that ensures that the public is not exposed to radio frequency energy levels in excess limit for maximum permissible exposure. In accordance with 47 CFR FCC Part 2 Subpart J, section 2.1091 this device has been defined as a mobile device whereby a distance of 0.2 m normally can be maintained between the user and the device.

The procedures / limit

(A) Limits for Occupational / Controlled Exposure

Frequency Range (MHz)	Electric Field Strength (E) (V/m)	Magnetic Field Strength (H) (A/m)	Power Density (S) (mW/ cm ²)	Averaging Time E ² , H ² or S (minutes)
0.3-3.0	614	1.63	(100)*	6
3.0-30	1842 / f	4.89 / f	(900 / f)*	6
30-300	61.4	0.163	1.0	6
300-1500			F/300	6
1500-100,000			5	6

(B) Limits for General Population / Uncontrolled Exposure

Frequency Range (MHz)	Electric Field Strength (E) (V/m)	Magnetic Field Strength (H) (A/m)	Power Density (S) (mW/ cm ²)	Averaging Time E ² , H ² or S (minutes)
0.3-1.34	614	1.63	(100)*	30
1.34-30	824/f	2.19/f	(180/f)*	30
30-300	27.5	0.073	0.2	30
300-1500			F/1500	30
1500-100,000			1.0	30

Note: f = frequency in MHz ; *Plane-wave equivalent power density

MPE Calculation Method

$$E \text{ (V/m)} = \frac{\sqrt{30 \times P \times G}}{d} \qquad \text{Power Density: } Pd \text{ (W/m}^2\text{)} = \frac{E^2}{377}$$

E = Electric field (V/m)

P = Peak RF output power (W)

G = EUT Antenna numeric gain (numeric)

d = Separation distance between radiator and human body (m)

The formula can be changed to

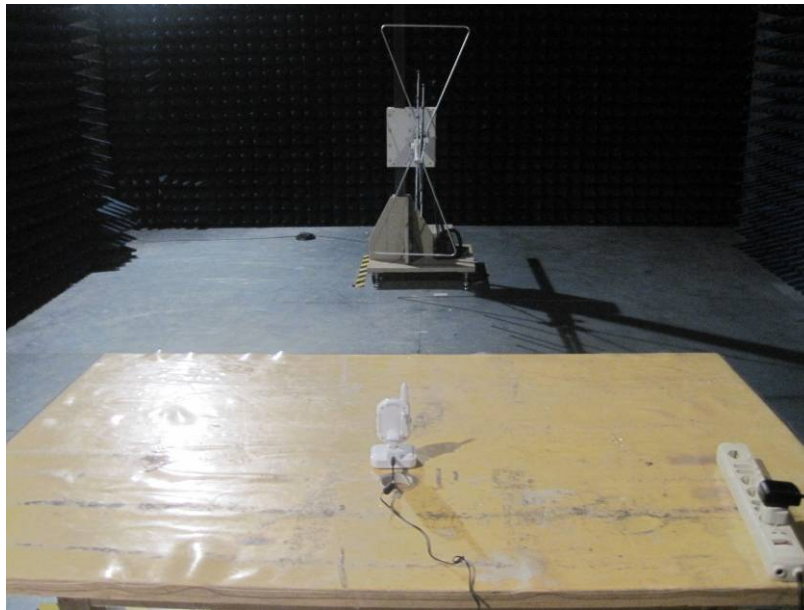
$$Pd = \frac{30 \times P \times G}{377 \times d^2}$$

From the peak EUT RF output power, the minimum mobile separation distance, d=0.2m, as well as the gain of the used antenna, the RF power density can be obtained

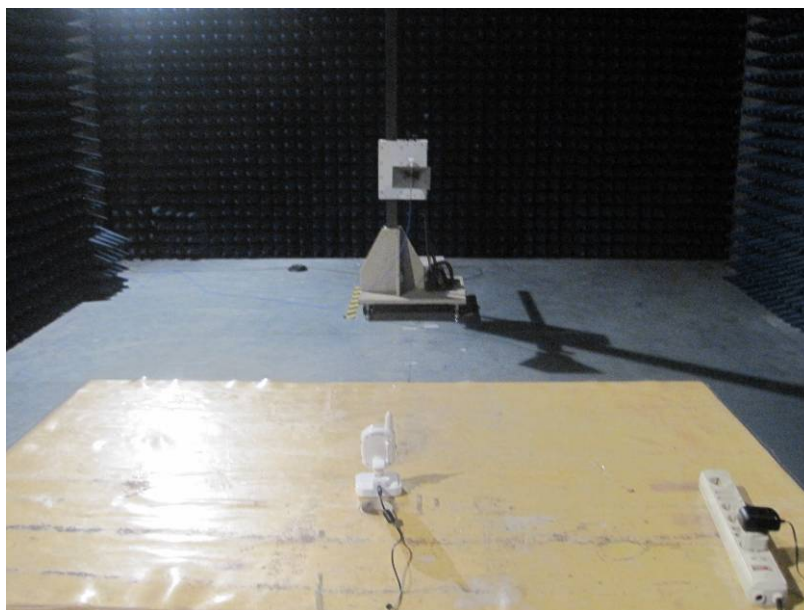
Antenna Gain (dBi)	Antenna Gain (numeric)	Peak Output Power (dBm)	Peak Output Power (mW)	Power Density (S) (mW/cm ²)	Limit of Power Density (S) (mW/cm ²)	Test Result
-2.39	0.577	15.144	32.69	0.00375	1	Complies
-2.39	0.577	15.421	34.84	0.0040	1	Complies
-2.39	0.577	15.421	34.84	0.0040	1	Complies

15 Photographs of Test Setup for CRX and CTX

Radiation Emission Test View For 30MHz-1000MHz



Radiation Emission Test View For 1GHz-25GHz



16 Photographs - Constructional Details

16.1 EUT – Appearance View



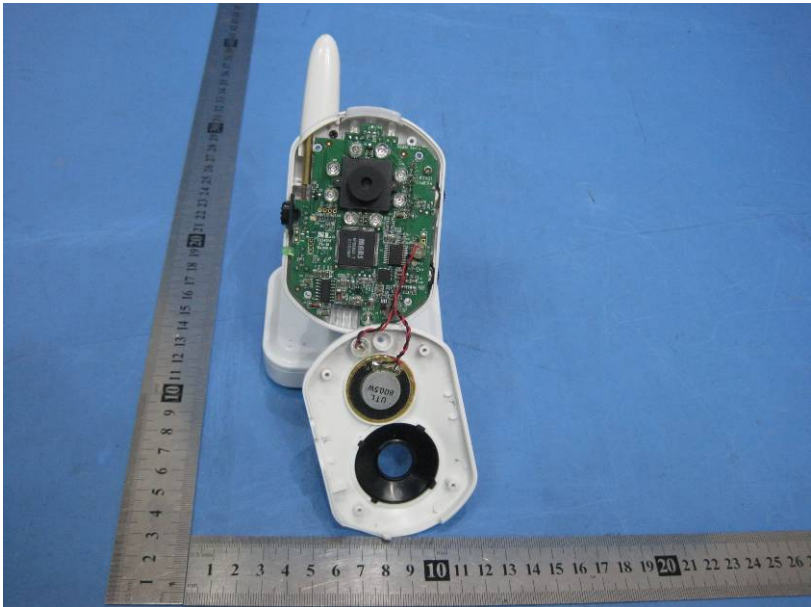
16.2 EUT - Front View



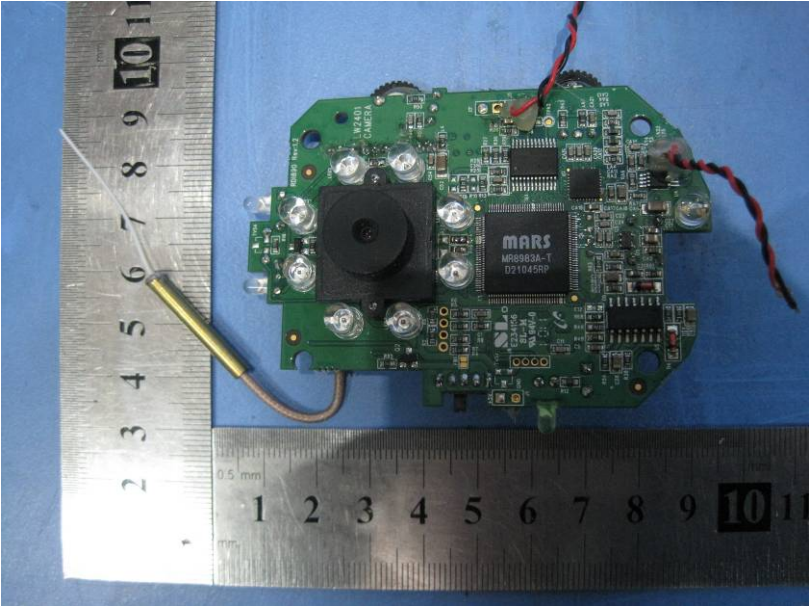
16.3 EUT - Back View



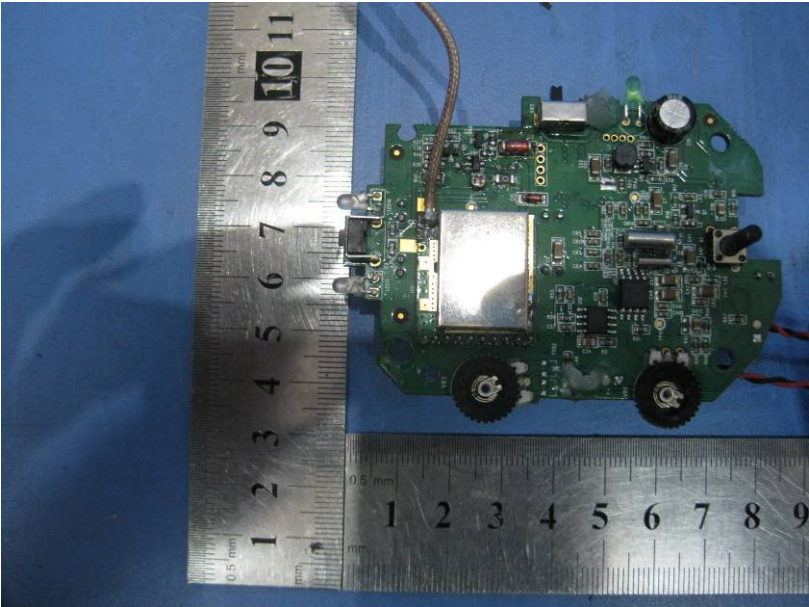
16.4 EUT – Open View



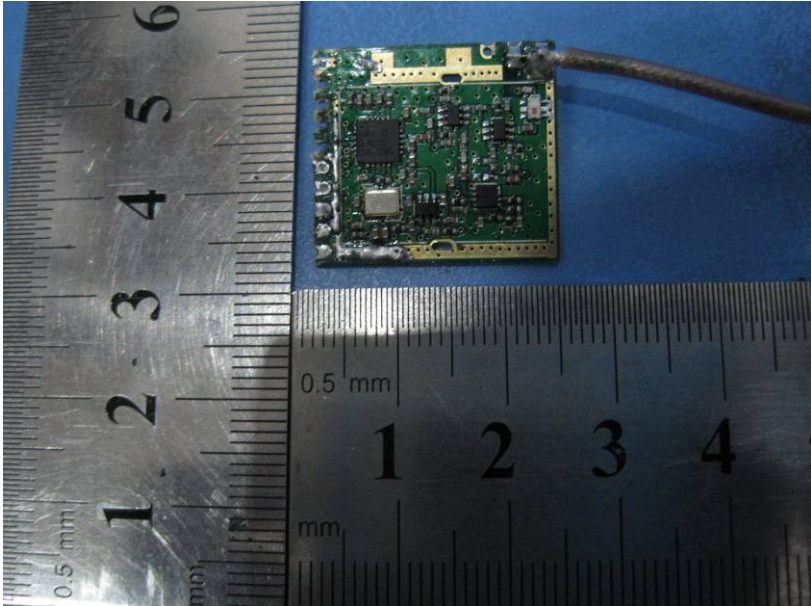
16.5 PCB 1 -Front View



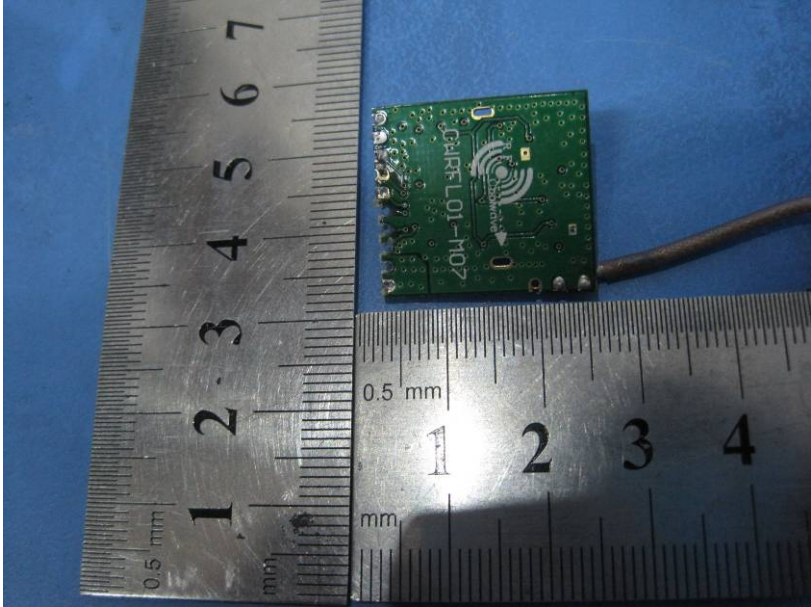
16.6 PCB 1 - Back View



16.7 PCB 2 -Front View



16.8 PCB 2-Back View



FCC ID Label

This device complies with Part 15 of the FCC Rules. Operation is subject to the following two conditions:(1)this device may not cause harmful interference, and (2) this device must accept any interference received, including interference that may cause undesired operation.

The Label must not be a stick-on paper. The Label on these products must be permanently affixed to the product and readily visible at the time of purchase and must last the expected lifetime of the equipment not be readily detachable.

Proposed Label Location on EUT
EUT Top View/ proposed FCC Label Location

