

# TEST REPORT

**Reference No.**..... : WTS15S0323860E  
**FCC ID** ..... : SJ8-CA641  
**Applicant**..... : RDI Technology ( Shenzhen ) Co., Ltd.  
**Address**..... : Building C1, Xintang Industrial Park East Baishixia, Fuyong, Baoan, Shenzhen, PRC.  
**Manufacturer** ..... : The same as above  
**Address**..... : The same as above  
**Product Name**..... : Digital Wireless Camera  
**Model No** ..... : CA641  
**Standards**..... : FCC CFR47 Part 15 Section 15.247:2013  
**Date of Receipt sample** .... : Mar.19, 2015  
**Date of Test** ..... : Mar. 20 - 24, 2015  
**Date of Issue**..... : Mar. 27, 2015  
**Test Result**..... : **Pass**

Remarks:

The results shown in this test report refer only to the sample(s) tested, this test report cannot be reproduced, except in full, without prior written permission of the company. The report would be invalid without specific stamp of test institute and the signatures of compiler and approver.

**Prepared By:**

**Waltek Services (Shenzhen) Co., Ltd.**

Address: 1/F., Fukangtai Building, West Baima Road, Songgang Street, Baoan District, Shenzhen, Guangdong, China

Tel :+86-755-83551033

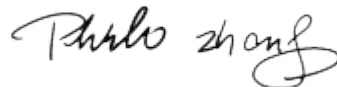
Fax:+86-755-83552400

Compiled by:



Zero Zhou / Project Engineer

Approved by:



Philo Zhong / Manager

## 2 Test Summary

Test Items	Test Requirement	Result
Radiated Emissions	15.205(a) 15.209(a)	PASS
Conducted Emissions	15.207(a)	PASS
6dB Bandwidth	15.247(a)(2)	PASS
Maximum Peak Output Power	15.247(b)(3),(4)	PASS
Power Spectral Density	15.247(e)	PASS
Band Edge	15.247(d)	PASS
Antenna Requirement	15.203	PASS
Maximum Permissible Exposure (Exposure of Humans to RF Fields)	1.1307(b)(1)	PASS

### 3 Contents

	<b>Page</b>
<b>1 COVER PAGE.....</b>	<b>1</b>
<b>2 TEST SUMMARY .....</b>	<b>2</b>
<b>3 CONTENTS .....</b>	<b>3</b>
<b>4 GENERAL INFORMATION.....</b>	<b>5</b>
4.1 GENERAL DESCRIPTION OF E.U.T. ....	5
4.2 DETAILS OF E.U.T. ....	5
4.3 CHANNEL LIST.....	5
4.4 TEST MODE .....	5
4.5 TEST FACILITY.....	6
<b>5 EQUIPMENT USED DURING TEST .....</b>	<b>7</b>
5.1 EQUIPMENTS LIST .....	7
5.2 MEASUREMENT UNCERTAINTY .....	8
5.3 TEST EQUIPMENT CALIBRATION .....	8
<b>6 CONDUCTED EMISSIONS.....</b>	<b>9</b>
6.1 E.U.T. OPERATION .....	9
6.2 EUT SETUP.....	9
6.3 MEASUREMENT DESCRIPTION .....	9
6.4 CONDUCTED EMISSION TEST RESULT .....	10
<b>7 RADIATED EMISSIONS.....</b>	<b>12</b>
7.1 EUT OPERATION.....	12
7.2 TEST SETUP .....	13
7.3 SPECTRUM ANALYZER SETUP .....	14
7.4 TEST PROCEDURE .....	15
7.5 SUMMARY OF TEST RESULTS .....	16
<b>8 BAND EDGE MEASUREMENT .....</b>	<b>19</b>
8.1 TEST PROCEDURE.....	19
8.2 TEST RESULT .....	20
<b>9 6 DB BANDWIDTH MEASUREMENT .....</b>	<b>21</b>
9.1 TEST PROCEDURE .....	21
9.2 TEST RESULT .....	21
<b>10 MAXIMUM PEAK OUTPUT POWER .....</b>	<b>23</b>
10.1 TEST PROCEDURE.....	23
10.2 TEST RESULT .....	23
<b>11 POWER SPECTRAL DENSITY .....</b>	<b>25</b>
11.1 TEST PROCEDURE.....	25
11.2 TEST RESULT .....	25
<b>12 ANTENNA REQUIREMENT .....</b>	<b>27</b>
<b>13 RF EXPOSURE.....</b>	<b>28</b>
13.1 REQUIREMENTS.....	28
13.2 THE PROCEDURES / LIMIT .....	28
13.3 MPE CALCULATION METHOD .....	29
<b>14 PHOTOGRAPHS – MODEL CA641 TEST SETUP .....</b>	<b>30</b>
14.1 RADIATED EMISSION .....	30
14.2 CONDUCTED EMISSION .....	32
<b>15 PHOTOGRAPHS - CONSTRUCTIONAL DETAILS .....</b>	<b>33</b>

15.1	MODEL CA641 – EXTERNAL VIEW .....	33
15.2	MODEL CA641 - INTERNAL VIEW .....	39

## 4 General Information

### 4.1 General Description of E.U.T.

Product Name:	Digital Wireless Camera
Model No.:	CA641
Model Difference:	N/A
Operation Frequency:	2408MHz ~ 2468MHz, 16 channels in total
The lowest oscillator:	32.768kHz
Type of modulation:	GFSK
Antenna installation:	External antenna with RP-SMA connector
Antenna gain:	2.0 dBi

### 4.2 Details of E.U.T.

Technical Data:	Input: DC 9V 600mA from AC adapter
AC adapter:	Input: AC 100-240V 50/60Hz, 200mA Output: DC 9V 600mA

### 4.3 Channel List

Channel No.	Frequency (MHz)	Channel No.	Frequency (MHz)	Channel No.	Frequency (MHz)	Channel No.	Frequency (MHz)
1	2408	2	2412	3	2416	4	2420
5	2424	6	2428	7	2432	8	2436
9	2440	10	2444	11	2448	12	2452
13	2456	14	2460	15	2464	16	2468

### 4.4 Test Mode

All test mode(s) and condition(s) mentioned were considered and evaluated respectively by performing full tests, the worst data were recorded and reported.

Table 1 Tests Carried Out Under FCC part 15.247

Test mode	Low channel	Middle channel	High channel
Transmitting	2408MHz	2440MHz	2468MHz

Table 2 Tests Carried Out Under FCC part 15.209

Test Item	Test Mode
Radiated Emissions	Transmitting
Conducted Emissions	Transmitting

#### 4.5 Test Facility

The test facility has a test site registered with the following organizations:

- **IC – Registration No.: 7760A**

Waltek Services(Shenzhen) Co., Ltd. Has been registered and fully described in a report filed with the Industry Canada. The acceptance letter from the Industry Canada is maintained in our files.

Registration number 7760A, July 12, 2012.

- **FCC Test Site 1#– Registration No.: 880581**

Waltek Services(Shenzhen) Co., Ltd. EMC Laboratory `has been registered and fully described in a report filed with the (FCC) Federal Communications Commission. The acceptance letter from the FCC is maintained in our files. Registration 880581, April 29, 2014.

- **FCC Test Site 2#– Registration No.: 328995**

Waltek Services(Shenzhen) Co., Ltd. EMC Laboratory `has been registered and fully described in a report filed with the (FCC) Federal Communications Commission. The acceptance letter from the FCC is maintained in our files. Registration 328995, December 3, 2014.

## 5 Equipment Used during Test

### 5.1 Equipments List

<b>Conducted Emissions Test Site 1#</b>						
<b>Item</b>	<b>Equipment</b>	<b>Manufacturer</b>	<b>Model No.</b>	<b>Serial No.</b>	<b>Last Calibration Date</b>	<b>Calibration Due Date</b>
1.	EMI Test Receiver	R&S	ESCI	100947	Sep.15,2014	Sep.14,2015
2.	LISN	R&S	ENV216	101215	Sep.15,2014	Sep.14,2015
3.	Cable	Top	TYPE16(3.5M)	-	Sep.15,2014	Sep.14,2015
<b>Conducted Emissions Test Site 2#</b>						
<b>Item</b>	<b>Equipment</b>	<b>Manufacturer</b>	<b>Model No.</b>	<b>Serial No.</b>	<b>Last Calibration Date</b>	<b>Calibration Due Date</b>
1.	EMI Test Receiver	R&S	ESCI	101155	Sep.15,2014	Sep.14,2015
2.	LISN	SCHWARZBECK	NSLK 8128	8128-289	Sep.15,2014	Sep.14,2015
3.	Limiter	York	MTS-IMP-136	261115-001-0024	Sep.15,2014	Sep.14,2015
4.	Cable	LARGE	RF300	-	Sep.15,2014	Sep.14,2015
<b>3m Semi-anechoic Chamber for Radiation Emissions Test site 1#</b>						
<b>Item</b>	<b>Equipment</b>	<b>Manufacturer</b>	<b>Model No.</b>	<b>Serial No.</b>	<b>Last Calibration Date</b>	<b>Calibration Due Date</b>
1	EMC Analyzer	Agilent	E7405A	MY45114943	Sep.15,2014	Sep.14,2015
2	Active Loop Antenna	Beijing Dazhi	ZN30900A	-	Sep.15,2014	Sep.14,2015
3	Trilog Broadband Antenna	SCHWARZBECK	VULB9163	336	Apr.19,2014	Apr.18,2015
4	Coaxial Cable (below 1GHz)	Top	TYPE16(13M)	-	Sep.15,2014	Sep.14,2015
5	Broad-band Horn Antenna	SCHWARZBECK	BBHA 9120 D	667	Apr.19,2014	Apr.18,2015
6	Broad-band Horn Antenna	SCHWARZBECK	BBHA 9170	335	Apr.19,2014	Apr.18,2015
7	Broadband Preamplifier	COMPLIANCE DIRECTION	PAP-1G18	2004	Mar.17,2014	Mar.16,2015
8	Coaxial Cable (above 1GHz)	Top	1GHz-25GHz	EW02014-7	Apr.10,2014	Apr.09,2015
<b>3m Semi-anechoic Chamber for Radiation Emissions Test site 2#</b>						
<b>Item</b>	<b>Equipment</b>	<b>Manufacturer</b>	<b>Model No.</b>	<b>Serial No</b>	<b>Last Calibration Date</b>	<b>Calibration Due Date</b>
1	Test Receiver	R&S	ESCI	101296	Sep.15,2014	Sep.14,2015
2	Trilog Broadband Antenna	SCHWARZBECK	VULB9160	9160-3325	Sep.15,2014	Sep.14,2015
3	Amplifier	Compliance pirection systems inc	PAP-0203	22024	Sep.15,2014	Sep.14,2015
4	Cable	HUBER+SUHNER	CBL2	525178	Sep.15,2014	Sep.14,2015

RF Conducted Testing						
Item	Equipment	Manufacturer	Model No.	Serial No.	Last Calibration Date	Calibration Due Date
1.	EMC Analyzer (9k~26.5GHz)	Agilent	E7405A	MY45114943	Sep.15,2014	Sep.14,2015
2.	Spectrum Analyzer (9k~6GHz)	R&S	FSL6	100959	Sep.15,2014	Sep.14,2015
3.	Signal Analyzer (9k~26.5GHz)	Agilent	N9010A	MY50520207	Sep.15,2014	Sep.14,2015

## 5.2 Measurement Uncertainty

Parameter	Uncertainty
Radio Frequency	$\pm 1 \times 10^{-6}$
RF Power	$\pm 1.0$ dB
RF Power Density	$\pm 2.2$ dB
Radiated Spurious Emissions test	$\pm 5.03$ dB (Bilog antenna 30M~1000MHz)
	$\pm 4.74$ dB (Horn antenna 1000M~25000MHz)
Conducted Spurious Emissions test	$\pm 3.64$ dB (AC mains 150KHz~30MHz)

## 5.3 Test Equipment Calibration

All the test equipments used are valid and calibrated by CEPREI Certification Body that address is No.110 Dongguan Zhuang RD. Guangzhou, P.R.China.



## 6 Conducted Emissions

Test Requirement:	FCC CFR 47 Part 15 Section 15.207
Test Method:	ANSI C63.4:2003
Test Result:	PASS
Frequency Range:	150kHz to 30MHz
Class/Severity:	Class B
Limit:	66-56 dB $\mu$ V between 0.15MHz & 0.5MHz 56 dB $\mu$ V between 0.5MHz & 5MHz 60 dB $\mu$ V between 5MHz & 30MHz
Detector:	Peak for pre-scan (9kHz Resolution Bandwidth)

### 6.1 E.U.T. Operation

Operating Environment :

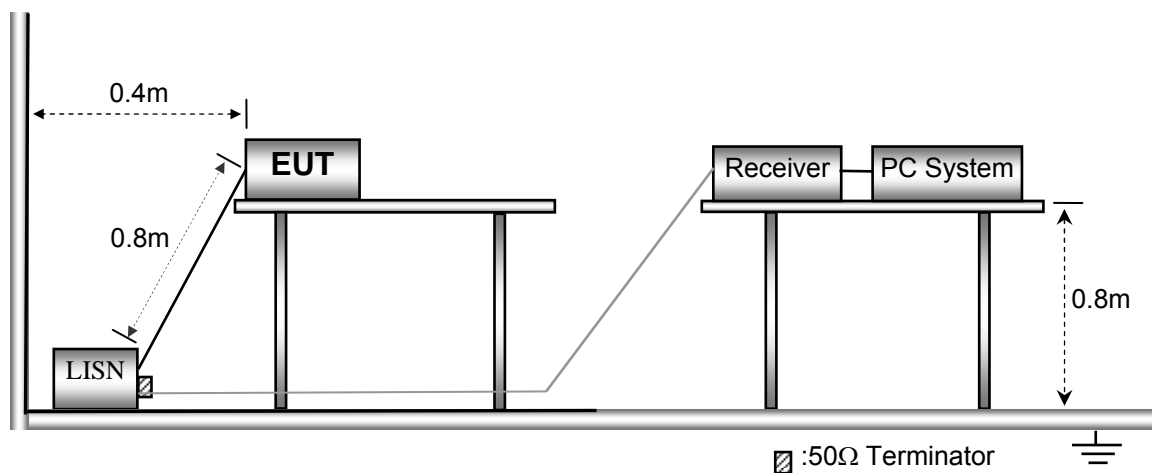
Temperature:	25.5 °C
Humidity:	51 % RH
Atmospheric Pressure:	101.2kPa

EUT Operation :

The test was performed in transmitting mode, the test data were shown in the report.

### 6.2 EUT Setup

The conducted emission tests were performed using the setup accordance with the ANSI C63.4:2003.

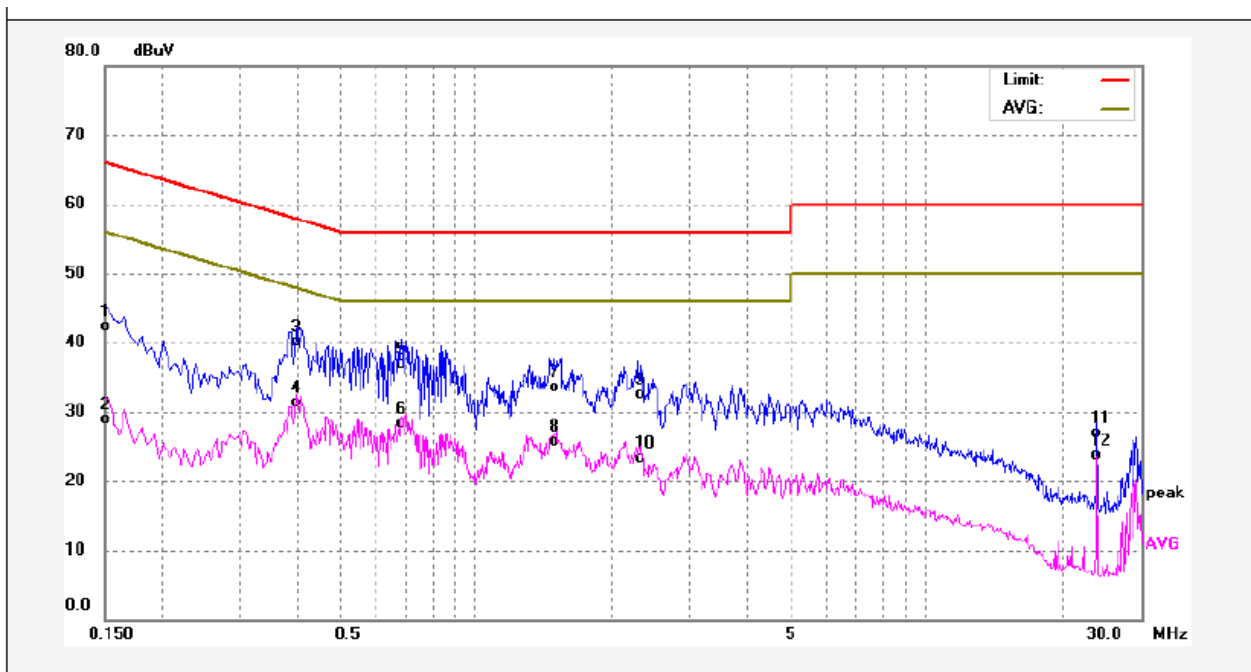


### 6.3 Measurement Description

The maximised peak emissions from the EUT was scanned and measured for both the Live and Neutral Lines. Quasi-peak & average measurements were performed if peak emissions were within 6dB of the average limit line.

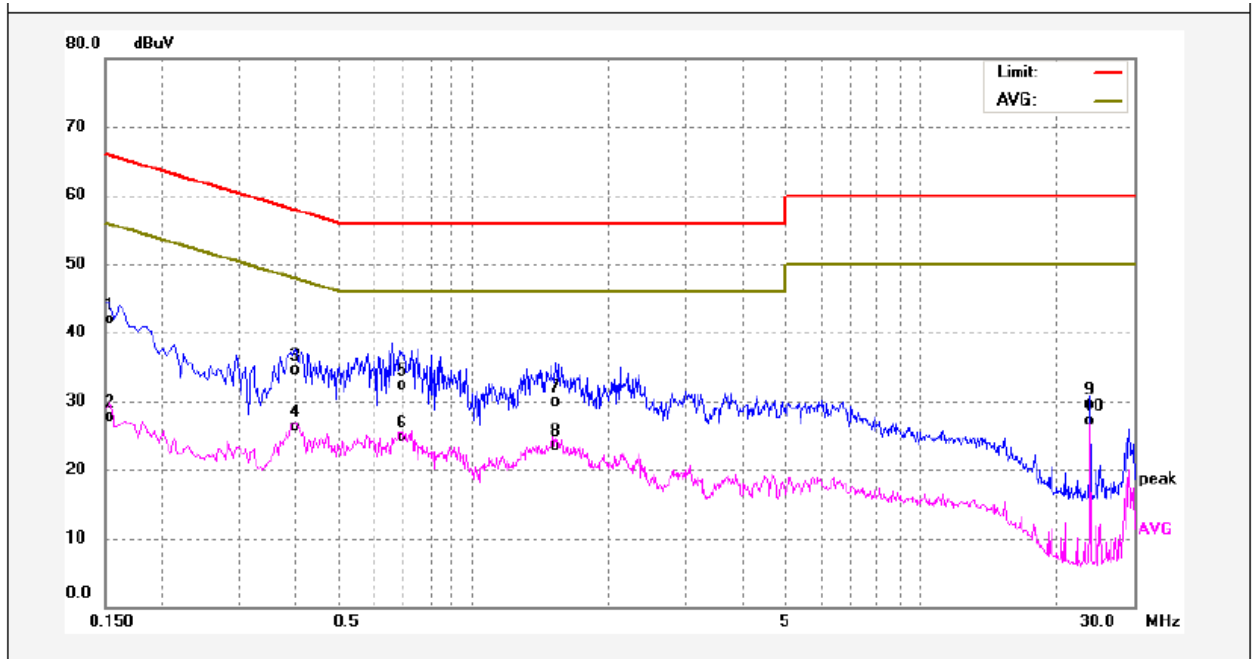
### 6.4 Conducted Emission Test Result

Live line:



No.	Freq. (MHz)	Reading (dBuV)	Factor (dB)	Result (dBuV)	Limit dBuV	Margin (dB)	Detector	Remark
1	0.1500	31.13	11.17	42.30	65.99	-23.69	QP	
2	0.1500	17.79	11.17	28.96	55.99	-27.03	AVG	
3	0.4020	28.84	11.31	40.15	57.81	-17.66	QP	
4	0.4020	20.01	11.31	31.32	47.81	-16.49	AVG	
5	0.6860	25.56	11.34	36.90	56.00	-19.10	QP	
6	0.6860	16.93	11.34	28.27	46.00	-17.73	AVG	
7	1.4819	22.31	11.19	33.50	56.00	-22.50	QP	
8	1.4819	14.44	11.19	25.63	46.00	-20.37	AVG	
9	2.2860	21.31	11.20	32.51	56.00	-23.49	QP	
10	2.2860	12.16	11.20	23.36	46.00	-22.64	AVG	
11	23.9980	15.34	11.55	26.89	60.00	-33.11	QP	
12	23.9980	12.18	11.55	23.73	50.00	-26.27	AVG	

Neutral line:



No.	Freq. (MHz)	Reading (dBuV)	Factor (dB)	Result (dBuV)	Limit dBuV	Margin (dB)	Detector	Remark
1	0.1500	30.71	11.17	41.88	65.99	-24.11	QP	
2	0.1500	16.54	11.17	27.71	55.99	-28.28	AVG	
3	0.3980	23.12	11.31	34.43	57.89	-23.46	QP	
4	0.3980	15.05	11.31	26.36	47.89	-21.53	AVG	
5	0.6863	20.96	11.34	32.30	56.00	-23.70	QP	
6	0.6863	13.38	11.34	24.72	46.00	-21.28	AVG	
7	1.5300	18.75	11.19	29.94	56.00	-26.06	QP	
8	1.5300	12.26	11.19	23.45	46.00	-22.55	AVG	
9	23.9980	18.01	11.55	29.56	60.00	-30.44	QP	
10	23.9980	15.54	11.55	27.09	50.00	-22.91	AVG	

## 7 Radiated Emissions

Test Requirement: FCC CFR47 Part 15 Section 15.209 & 15.247

Test Method: ANSI C63.4:2003

Test Result: PASS

Measurement Distance: 3m

Limit:

Frequency (MHz)	Field Strength		Field Strength Limit at 3m Measurement Dist	
	uV/m	Distance (m)	uV/m	dBuV/m
0.009 ~ 0.490	2400/F(kHz)	300	10000 * 2400/F(kHz)	$20\log^{(2400/F(kHz))} + 80$
0.490 ~ 1.705	24000/F(kHz)	30	100 * 24000/F(kHz)	$20\log^{(24000/F(kHz))} + 40$
1.705 ~ 30	30	30	100 * 30	$20\log^{(30)} + 40$
30 ~ 88	100	3	100	$20\log^{(100)}$
88 ~ 216	150	3	150	$20\log^{(150)}$
216 ~ 960	200	3	200	$20\log^{(200)}$
Above 960	500	3	500	$20\log^{(500)}$

### 7.1 EUT Operation

Operating Environment:

Temperature: 25.5 °C

Humidity: 51 % RH

Atmospheric Pressure: 1016 mbar

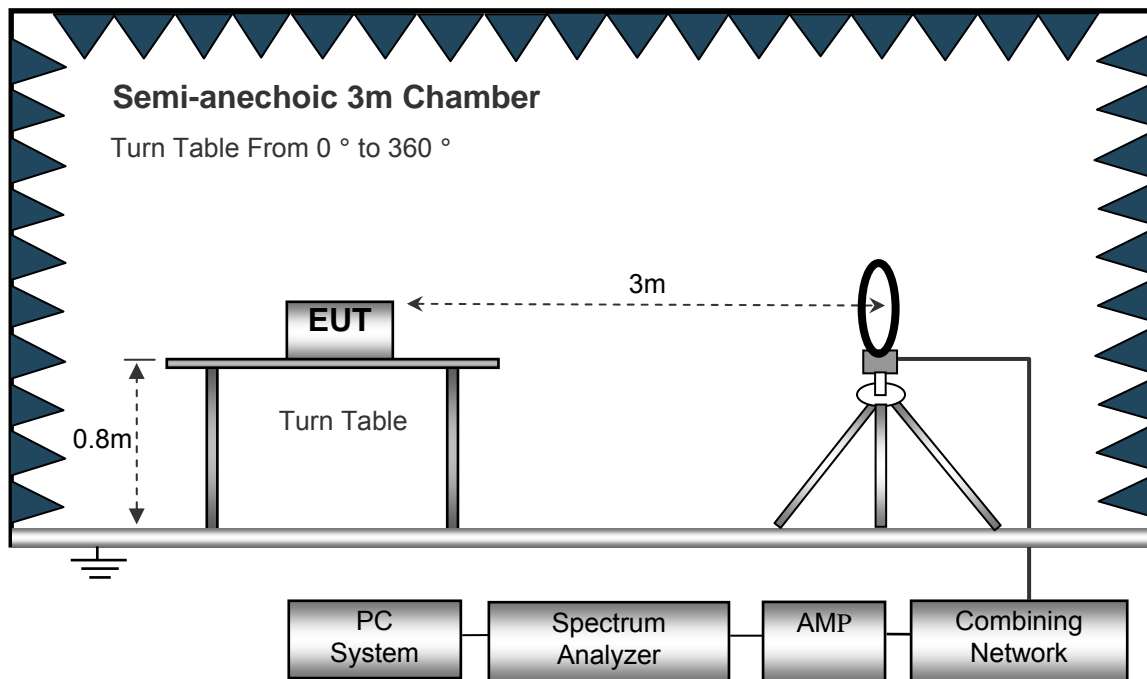
EUT Operation:

The test was performed in transmitting mode, the test data were shown in the report.

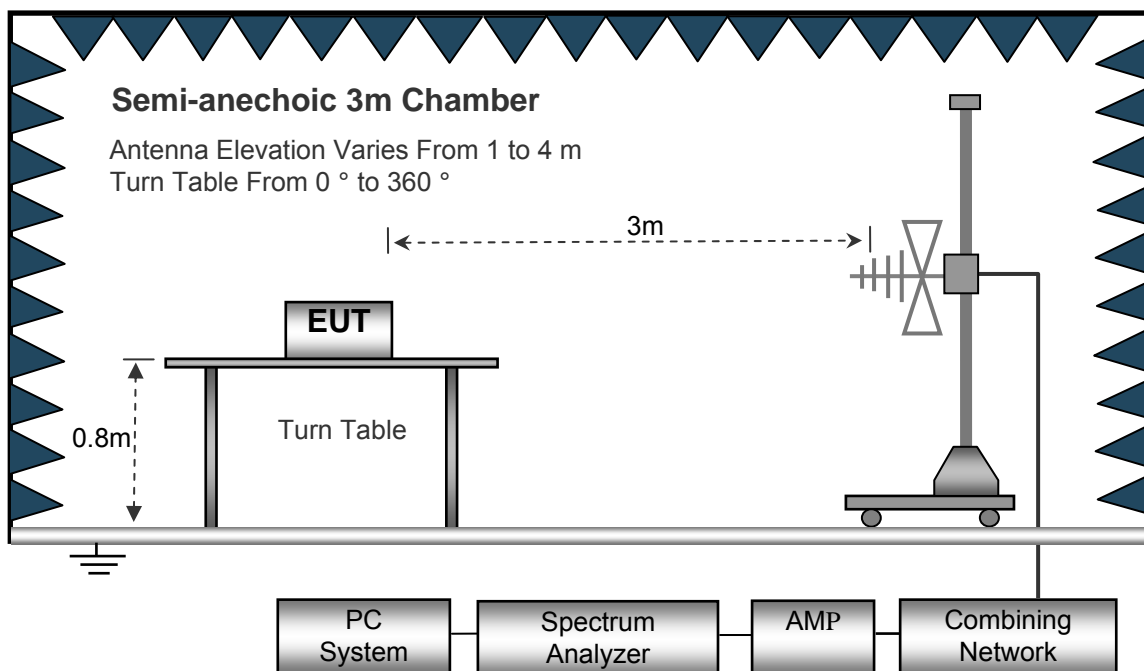
### 7.2 Test Setup

The radiated emission tests were performed in the 3m Semi- Anechoic Chamber test site, using the setup accordance with the ANSI C63.4: 2003.

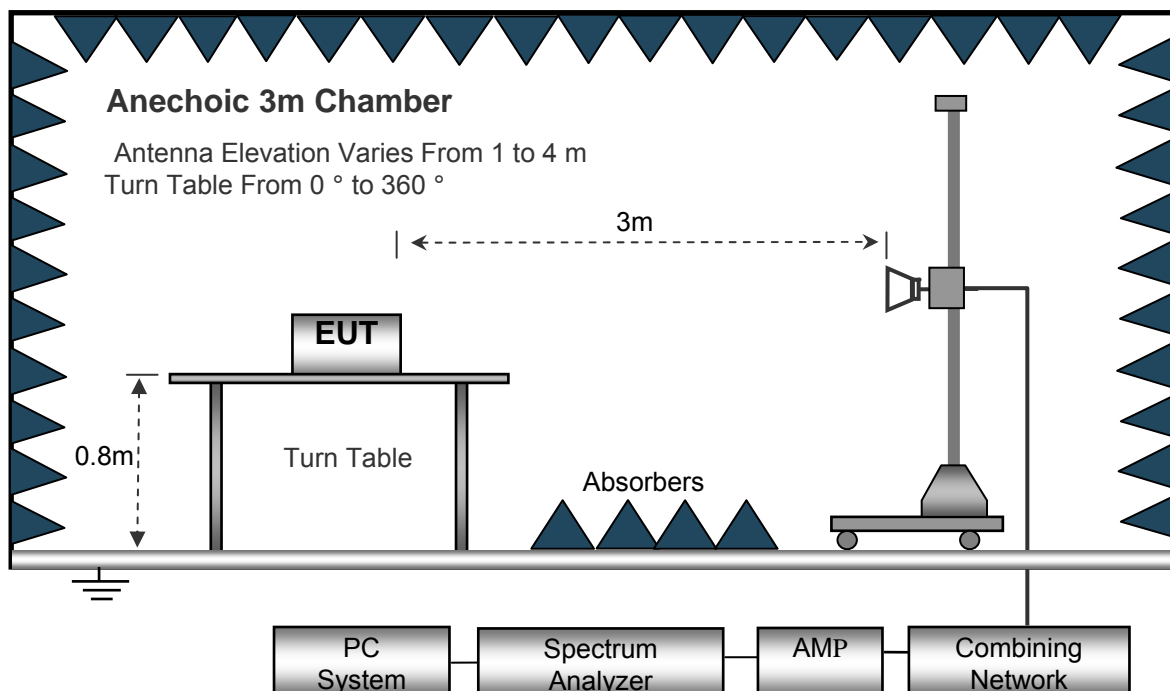
The test setup for emission measurement below 30MHz.



The test setup for emission measurement from 30 MHz to 1 GHz.



The test setup for emission measurement above 1 GHz.



### 7.3 Spectrum Analyzer Setup

Below 30MHz

Sweep Speed ..... Auto  
 IF Bandwidth..... 10kHz  
 Video Bandwidth..... 10kHz  
 Resolution Bandwidth..... 10kHz

30MHz ~ 1GHz

Sweep Speed ..... Auto  
 Detector ..... PK  
 Resolution Bandwidth..... 100kHz  
 Video Bandwidth..... 300kHz

Above 1GHz

Sweep Speed ..... Auto  
 Detector ..... PK  
 Resolution Bandwidth..... 1MHz  
 Video Bandwidth..... 3MHz  
 Detector ..... Ave.  
 Resolution Bandwidth..... 1MHz  
 Video Bandwidth..... 10Hz

#### 7.4 Test Procedure

1. The EUT is placed on a turntable, which is 0.8m above ground plane.
2. The turntable shall be rotated for 360 degrees to determine the position of maximum emission level.
3. EUT is set 3m away from the receiving antenna, which is moved from 1m to 4m to find out the maximum emissions.
4. Maximum procedure was performed on the six highest emissions to ensure EUT compliance.
5. And also, each emission was to be maximized by changing the polarization of receiving antenna both horizontal and vertical.
6. Repeat above procedures until the measurements for all frequencies are complete.
7. The radiation measurements are performed in X,Y and Z axis positioning(X denotes lying on the table, Y denotes side stand and Z denotes vertical stand),the worst condition was tested putting the eut in X axis,so the worst data were shown as follow.

## 7.5 Summary of Test Results

### Test Frequency: 32.768kHz~30MHz

The measurements were more than 20 dB below the limit and not reported.

### Test Frequency: 30MHz ~ 18GHz

Frequency	Receiver Reading	Detector	Turn table Angle	RX Antenna		Corrected Factor	Corrected Amplitude	Limit	Margin
				Height	Polar				
(MHz)	(dB $\mu$ V)	(PK/QP/Ave)	Degree	(m)	(H/V)	(dB)	(dB $\mu$ V/m)	(dB $\mu$ V/m)	(dB)
GFSK Low Channel									
485.69	12.85	PK	40	1.3	H	21.09	33.94	47.00	-13.06
485.69	12.36	PK	56	1.8	V	21.09	33.45	47.00	-13.55
4816.00	50.43	PK	262	1.3	V	-1.05	49.38	74.00	-24.62
4816.00	46.24	Ave	262	1.3	V	-1.05	45.19	54.00	-8.81
7224.00	46.15	PK	168	1.4	H	1.35	47.50	74.00	-26.50
7224.00	45.16	Ave	168	1.4	H	1.35	46.51	54.00	-7.49
9632.00	46.95	PK	127	2.0	V	-13.18	33.77	74.00	-40.23
9632.00	37.38	Ave	127	2.0	V	-13.18	24.20	54.00	-29.80
2380.66	44.80	PK	91	1.6	H	-13.15	31.65	74.00	-42.35
2380.66	37.77	Ave	91	1.6	H	-13.15	24.62	54.00	-29.38
2491.96	43.29	PK	79	1.9	V	-13.07	30.22	74.00	-43.78
2491.96	37.19	Ave	79	1.9	V	-13.07	24.12	54.00	-29.88



Frequency	Receiver Reading	Detector	Turn table Angle	RX Antenna		Corrected Factor	Corrected Amplitude	Limit	Margin
				Height	Polar				
(MHz)	(dB $\mu$ V)	(PK/QP/Ave)	Degree	(m)	(H/V)	(dB)	(dB $\mu$ V/m)	(dB $\mu$ V/m)	(dB)
GFSK Middle Channel									
485.69	13.26	PK	257	1.7	H	21.09	34.35	47.00	-12.65
485.69	13.27	PK	88	1.7	V	21.09	34.36	47.00	-12.64
4880.00	49.52	PK	17	1.6	V	-0.63	48.89	74.00	-25.11
4880.00	47.11	Ave	17	1.6	V	-0.63	46.48	54.00	-7.52
7320.00	45.29	PK	206	1.8	H	2.25	47.54	74.00	-26.46
7320.00	44.75	Ave	206	1.8	H	2.25	47.00	54.00	-7.00
2329.44	45.70	PK	355	1.9	V	-13.18	32.52	74.00	-41.48
2329.44	39.76	Ave	355	1.9	V	-13.15	26.61	54.00	-27.39
2357.13	44.87	PK	317	1.4	H	-13.15	31.72	74.00	-42.28
2357.13	37.44	Ave	317	1.4	H	-13.15	24.29	54.00	-29.71
2495.16	44.82	PK	250	1.6	V	-13.08	31.74	74.00	-42.26
2495.16	36.75	Ave	250	1.6	V	-13.08	23.67	54.00	-30.33

Frequency	Receiver Reading	Detector	Turn table Angle	RX Antenna		Corrected Factor	Corrected Amplitude	Limit	Margin
				Height	Polar				
(MHz)	(dB $\mu$ V)	(PK/QP/Ave)	Degree	(m)	(H/V)	(dB)	(dB $\mu$ V/m)	(dB $\mu$ V/m)	(dB)
GFSK High Channel									
485.69	14.42	PK	275	1.9	H	21.09	35.51	47.00	-11.49
485.69	14.13	PK	76	1.7	V	21.09	35.22	47.00	-11.78
4936.00	50.45	PK	103	1.5	V	-0.25	50.20	74.00	-23.80
4936.00	48.69	Ave	103	1.5	V	-0.25	48.44	54.00	-5.56
7404.00	48.31	PK	53	1.4	H	2.86	51.17	74.00	-22.83
7404.00	47.35	Ave	53	1.4	H	2.86	50.21	54.00	-3.79
9872.00	45.16	PK	353	1.9	V	-13.18	31.98	74.00	-42.02
9872.00	37.10	Ave	353	1.9	V	-13.18	23.92	54.00	-30.08
2364.43	43.52	PK	225	1.4	H	-13.15	30.37	74.00	-43.63
2364.43	37.90	Ave	225	1.4	H	-13.15	24.75	54.00	-29.25
2493.46	44.49	PK	6	1.1	V	-13.09	31.40	74.00	-42.60
2493.46	36.70	Ave	6	1.1	V	-13.09	23.61	54.00	-30.39

**Test Frequency: 18GHz~25GHz**

The measurements were more than 20 dB below the limit and not reported

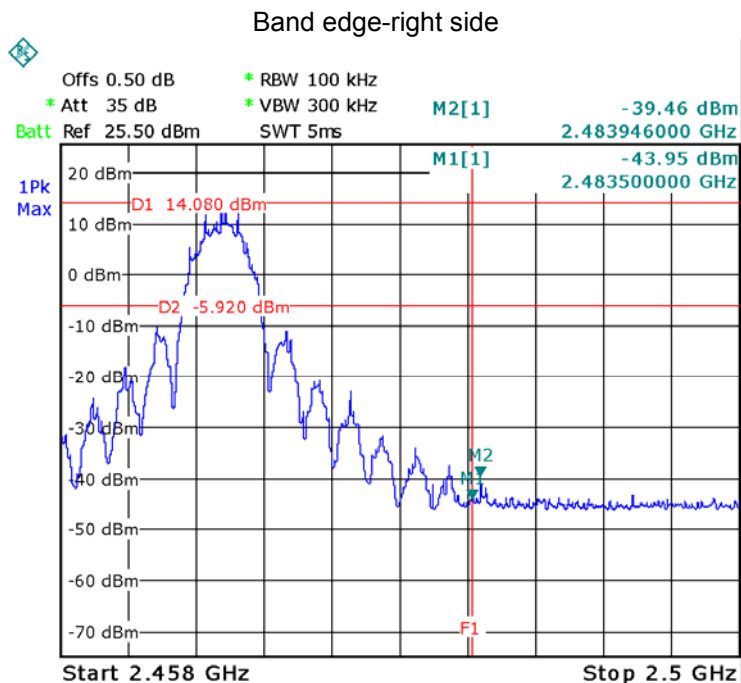
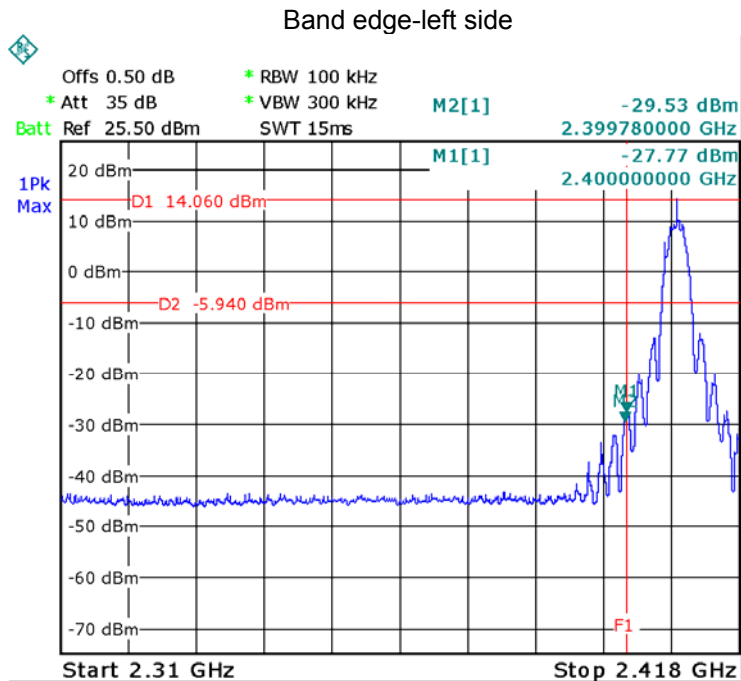
## 8 Band Edge Measurement

Test Requirement:	Section 15.247(d) In addition, radiated emissions which fall in the restricted bands, as defined in Section 15.205(a), must also comply with the radiated emission limits specified in Section 15.209(a) and 15.205(c).
Test Method:	KDB558074 D01 DTS Meas Guidance v03r01
Test Limit:	Regulation 15.247 (d), In any 100 kHz bandwidth outside the frequency band in which the spread spectrum or digitally modulated intentional radiator is operating, the radio frequency power that is produced by the intentional radiator shall be at least 20 dB below that in the 100 kHz bandwidth within the band that contains the highest level of the desired power, based on either an RF conducted or a radiated measurement, provided the transmitter demonstrates compliance with the peak conducted power limits. If the transmitter complies with the conducted power limits based on the use of RMS averaging over a time interval, as permitted under paragraph (b)(3) of this section, the attenuation required under this paragraph shall be 30 dB instead of 20 dB. Attenuation below the general limits specified in §15.209(a) is not required. In addition, radiated emissions which fall in the restricted bands, as defined in §15.205(a), must also comply with the radiated emission limits specified in §15.209(a) (see §15.205(c)).
Test Mode:	Transmitting

### 8.1 Test Produce

1. Check the calibration of the measuring instrument using either an internal calibrator or a known signal from an external generator.
2. Position the EUT without connection to measurement instrument. Turn on the EUT and connect its antenna terminal to measurement instrument via a low loss cable. Then set it to any one measured frequency within its operating range, and make sure the instrument is operated in its linear range.
3. Set the spectrum analyzer: RBW = 100kHz, VBW = 300kHz, Sweep = auto  
Detector function = peak, Trace = max hold
4. Measure the highest amplitude appearing on spectral display and set it as a reference level. Plot the graph with marking the highest point and edge frequency.
5. Repeat above procedures until all measured frequencies were complete.

### 8.2 Test Result



## 9 6 dB Bandwidth Measurement

Test Requirement:

FCC CFR47 Part 15 Section 15.247

Test Method:

KDB558074 D01 DTS Meas Guidance v03r01

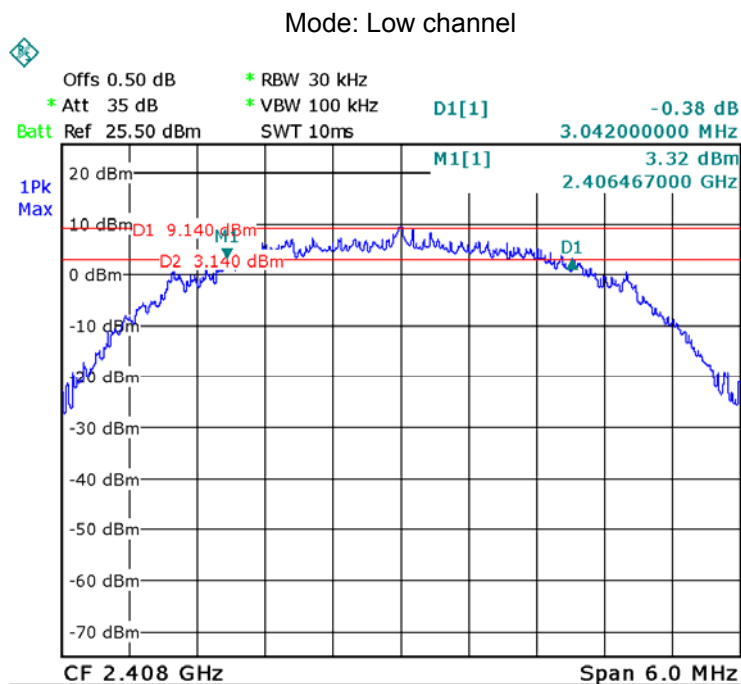
### 9.1 Test Procedure

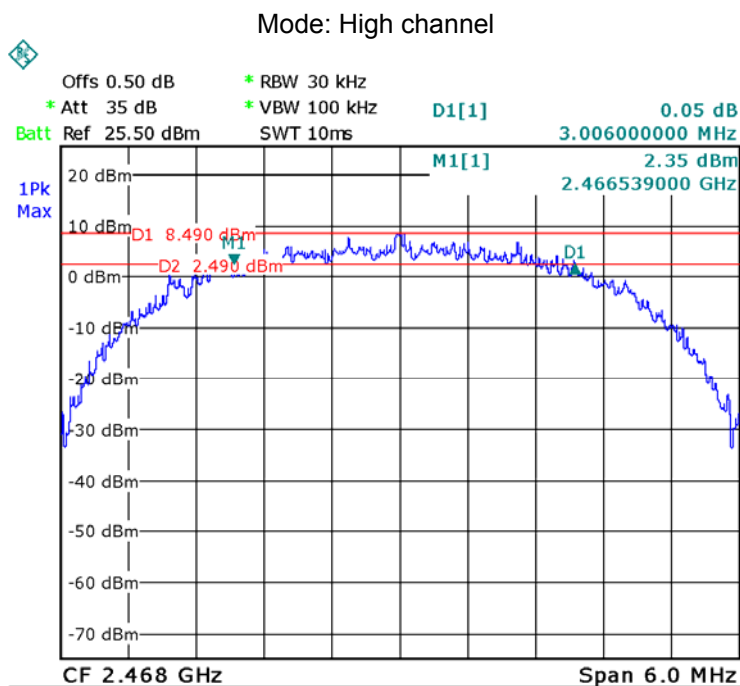
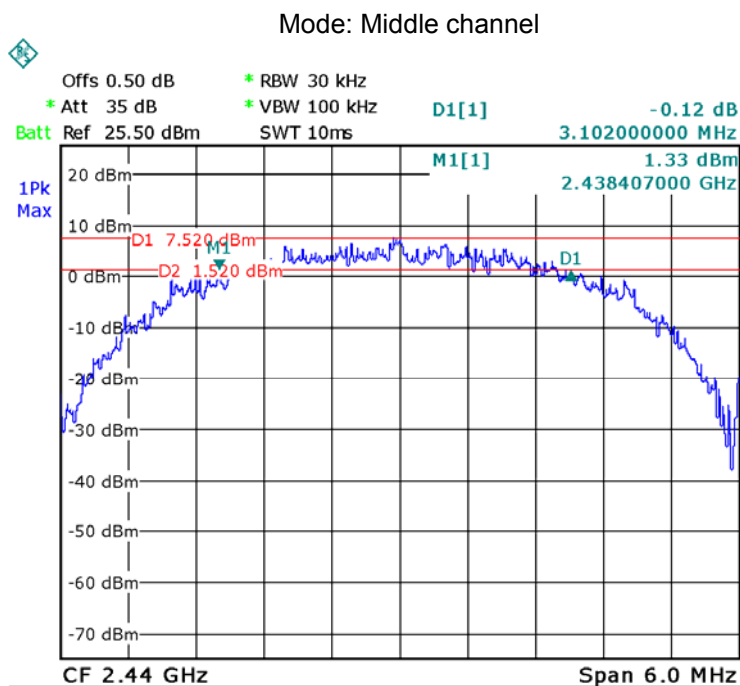
1. Remove the antenna from the EUT and then connect a low RF cable from the antenna port to the spectrum;
2. Set the spectrum analyzer: RBW = 30kHz, VBW = 100kHz

### 9.2 Test Result

Operation mode	Bandwidth (MHz)
Low channel	3.042
Middle channel	3.102
High channel	3.006

Test result plot as follows:





## 10 Maximum Peak Output Power

Test Requirement:

FCC CFR47 Part 15 Section 15.247

Test Method:

KDB558074 D01 DTS Meas Guidance v03r01

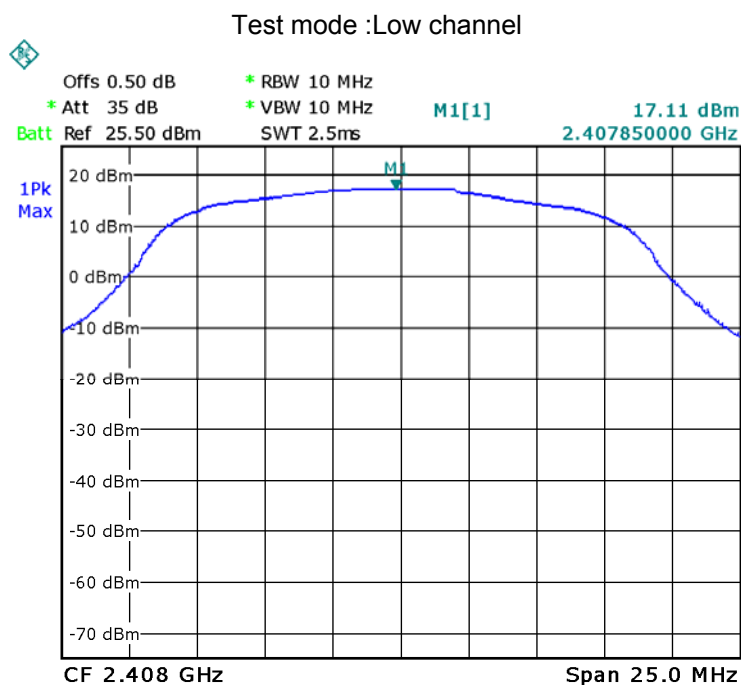
### 10.1 Test Procedure

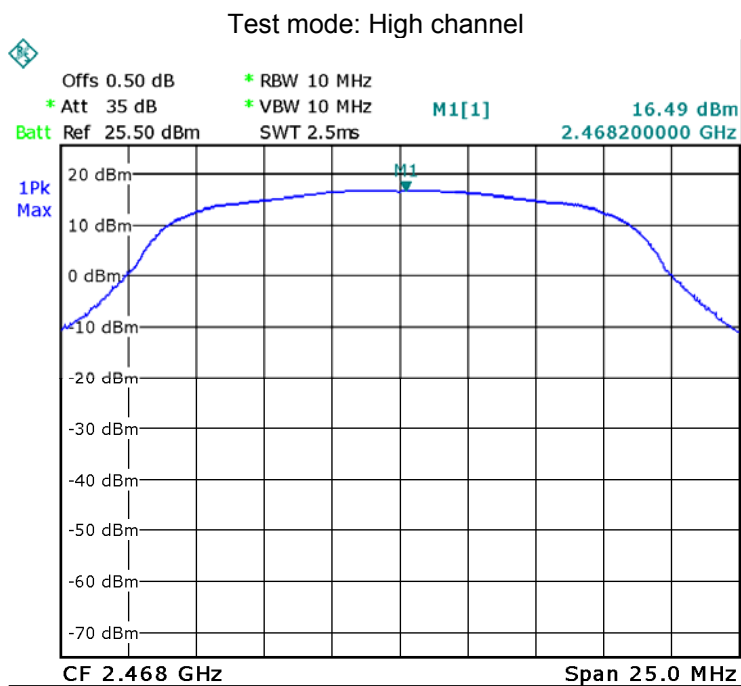
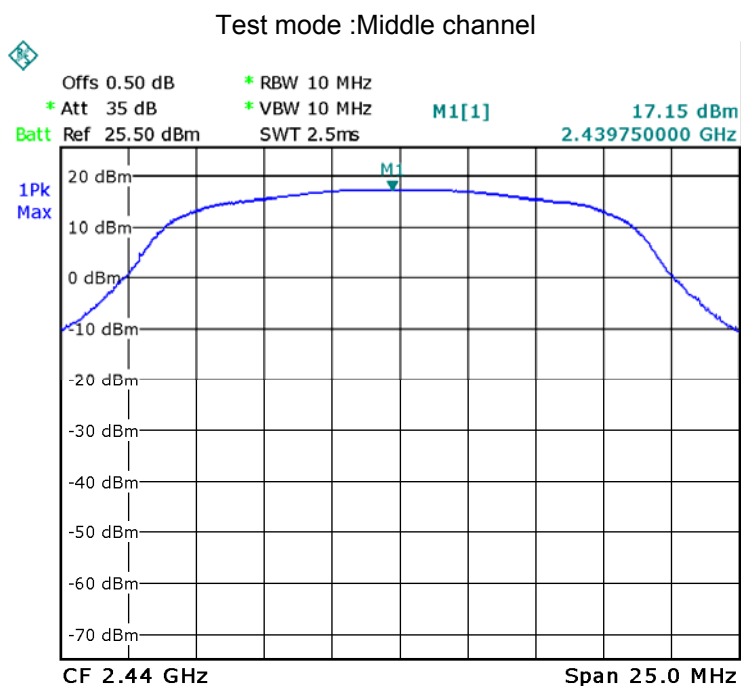
KDB558074 D01 DTS Meas Guidance v03r01 section 8.1.2 Option 2

1. Remove the antenna from the EUT and then connect a low RF cable from the antenna port to the spectrum.
2. Set the spectrum analyzer: RBW = 10MHz. VBW = 10MHz. Sweep = auto; Detector Function = Peak, Set the span to fully encompass the DTS bandwidth.
3. Keep the EUT in transmitting at lowest, medium and highest channel individually. Record the max value.

### 10.2 Test Result

Test Mode	Data Rate	Peak Power(dBm)		
		Low Channel	Middle Channel	High Channel
GFSK	1Mbps	17.11	17.15	16.49







## 11 Power Spectral density

Test Requirement:

FCC CFR47 Part 15 Section 15.247

Test Method:

KDB558074 D01 DTS Meas Guidance v03r01

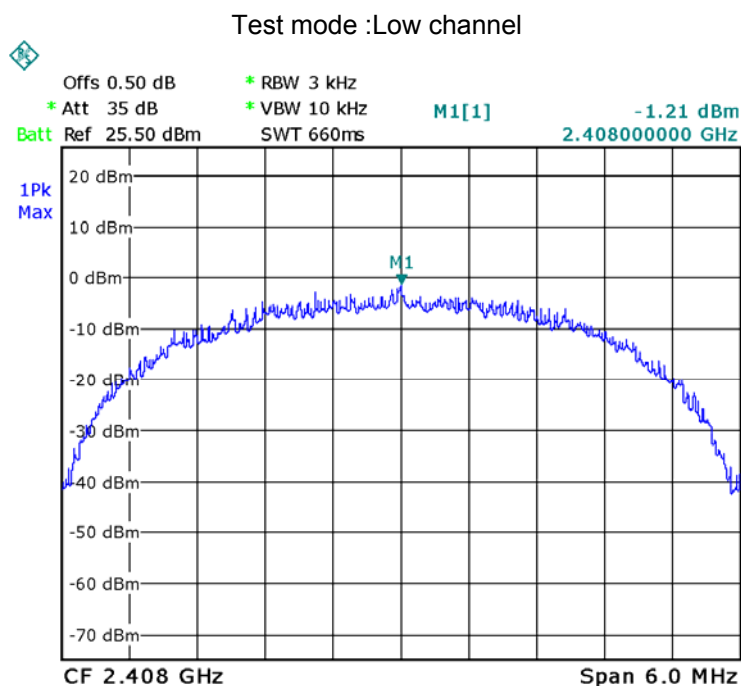
### 11.1 Test Procedure

KDB558074 D01 DTS Meas Guidance v03r01 section 9.1 Option 1

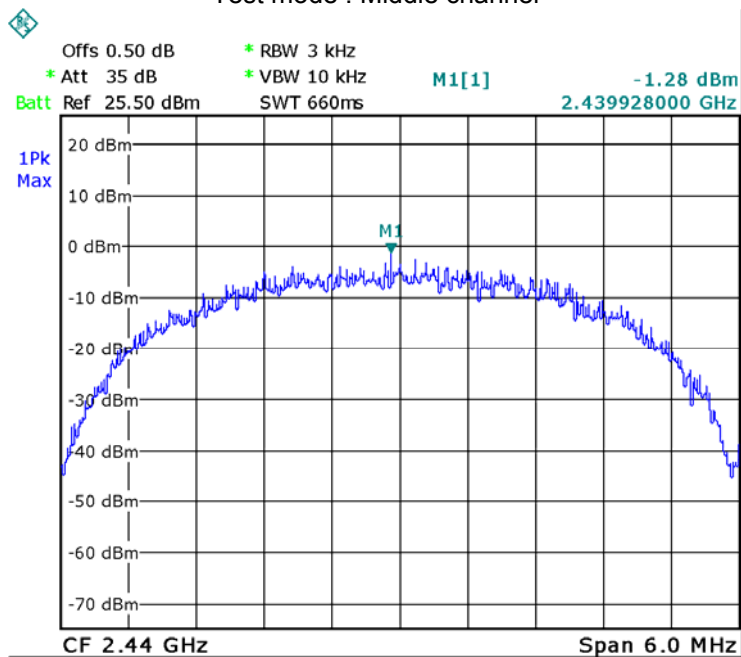
1. Remove the antenna from the EUT and then connect a low RF cable from the antenna port to the spectrum.
2. Set the spectrum analyzer: RBW = 3kHz. VBW = 10kHz , Span = 1.5 times the DTS channel bandwidth(6 dB bandwidth). Sweep = auto; Detector Function = Peak. Trace = Max hold.
3. Allow the trace to stabilize. Use the marker-delta function to determine the separation between the peaks of the adjacent channels. The limit is specified in one of the subparagraphs of this Section  
Submit this plot.

### 11.2 Test Result

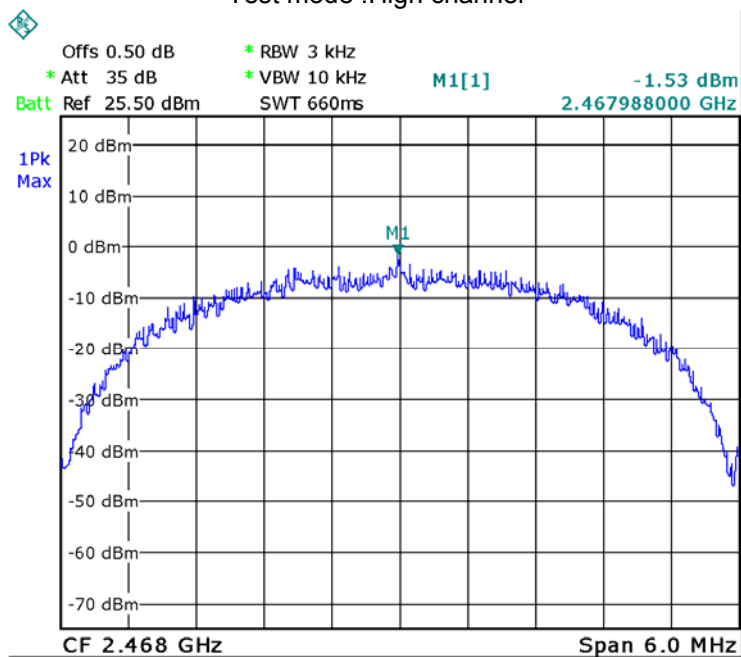
Power Spectral Density		
Low channel	Middle channel	High channel
-1.21	-1.28	-1.53
Limit		
8dBm per 3kHz		



Test mode : Middle channel



Test mode :High channel



## **12 Antenna Requirement**

According to the FCC Part 15 Paragraph 15.203, an intentional radiator shall be designed to ensure that no antenna other than that furnished by the responsible party shall be used with the device. This product has a External antenna with RP-SMA connector, fulfill the requirement of this section.

## 13 RF Exposure

Test Requirement: FCC Part 1.1307

Test Mode: The EUT work in test mode(Tx).

### 13.1 Requirements

Systems operating under the provisions of this section shall be operated in a manner that ensures that the public is not exposed to radio frequency energy levels in excess limit for maximum permissible exposure. In accordance with 47 CFR FCC Part 2 Subpart J, section 2.1091 this device has been defined as a mobile device whereby a distance of 0.2 m normally can be maintained between the user and the device.

### 13.2 The procedures / limit

(A) Limits for Occupational / Controlled Exposure

Frequency Range (MHz)	Electric Field Strength (E) (V/m)	Magnetic Field Strength (H) (A/m)	Power Density (S) (mW/ cm <sup>2</sup> )	Averaging Time  E  <sup>2</sup> , H  <sup>2</sup> or S (minutes)
0.3-3.0	614	1.63	(100)*	6
3.0-30	1842 / f	4.89 / f	(900 / f)*	6
30-300	61.4	0.163	1.0	6
300-1500			F/300	6
1500-100,000			5	6

(B) Limits for General Population / Uncontrolled Exposure

Frequency Range (MHz)	Electric Field Strength (E) (V/m)	Magnetic Field Strength (H) (A/m)	Power Density (S) (mW/ cm <sup>2</sup> )	Averaging Time  E  <sup>2</sup> , H  <sup>2</sup> or S (minutes)
0.3-1.34	614	1.63	(100)*	30
1.34-30	824/f	2.19/f	(180/f)*	30
30-300	27.5	0.073	0.2	30
300-1500			F/1500	30
1500-100,000			1.0	30

Note: f = frequency in MHz ; \*Plane-wave equivalent power density

### 13.3 MPE Calculation Method

$$E \text{ (V/m)} = \frac{\sqrt{30 \times P \times G}}{d} \qquad \text{Power Density: } Pd \text{ (W/m}^2\text{)} = \frac{E^2}{377}$$

**E** = Electric field (V/m)

**P** = Peak RF output power (W)

**G** = EUT Antenna numeric gain (numeric)

**d** = Separation distance between radiator and human body (m)

The formula can be changed to

$$Pd = \frac{30 \times P \times G}{377 \times d^2}$$

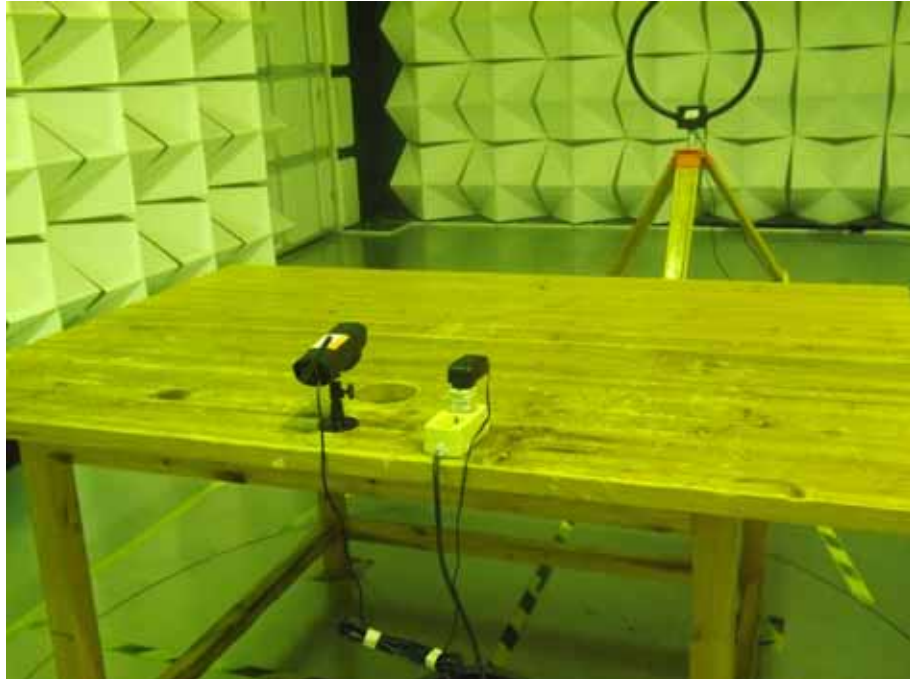
From the peak EUT RF output power, the minimum mobile separation distance, d=0.2m, as well as the gain of the used antenna, the RF power density can be obtained

Antenna Gain (numeric)	Max.Peak Output Power (dBm)	Peak Output Power (mW)	Power Density (mW/cm <sup>2</sup> )	Limit of Power Density (mW/cm <sup>2</sup> )
1.585	17.15	51.88	0.016358	1.0

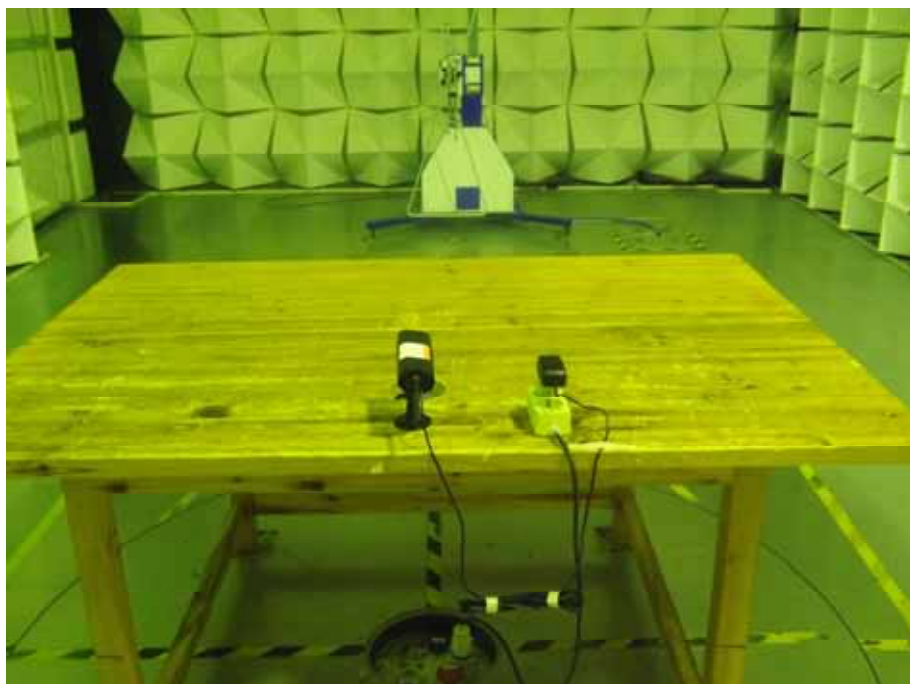
## 14 Photographs – Model CA641 Test Setup

### 14.1 Radiated Emission

Test frequency below 30MHz at test site 2#



Test frequency from 30MHz to 1GHz at test site 2#



Test frequency above 1GHz at test site 1#



## 14.2 Conducted Emission

test site 2#





## 15 Photographs - Constructional Details

### 15.1 Model CA641 – External View









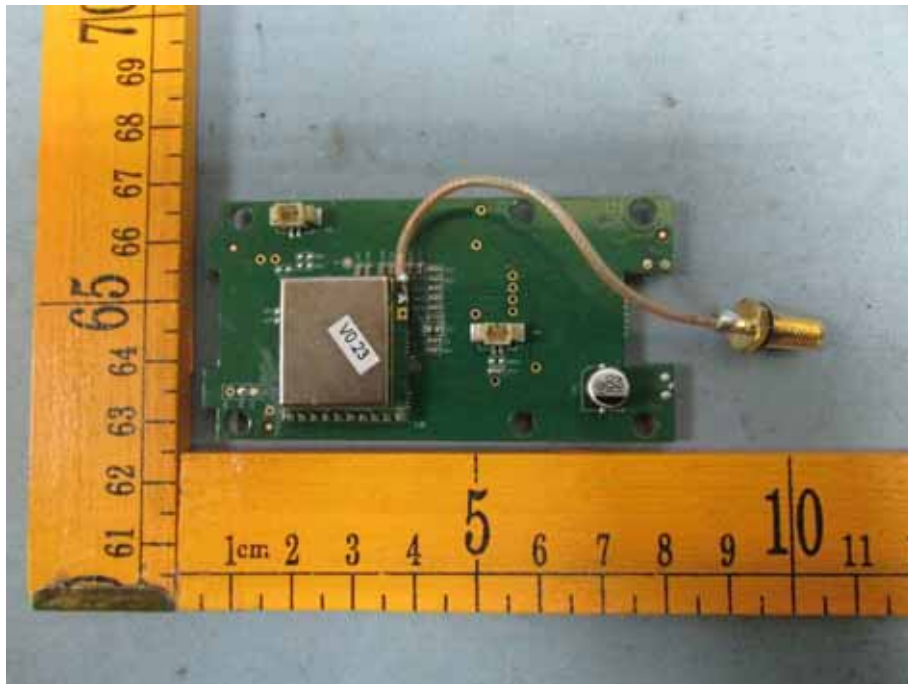
External antenna with RP-SMA connector

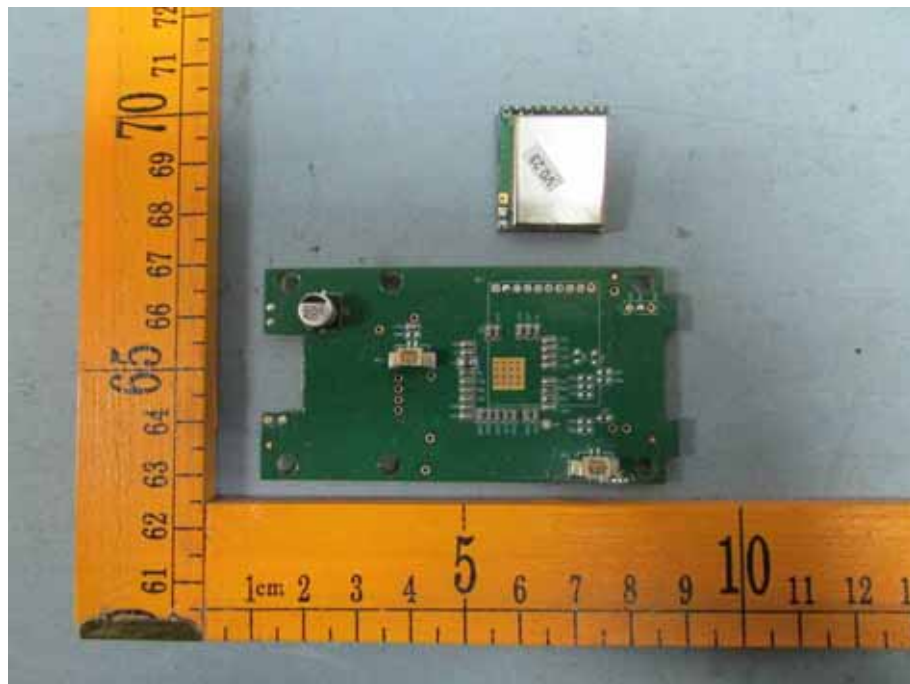
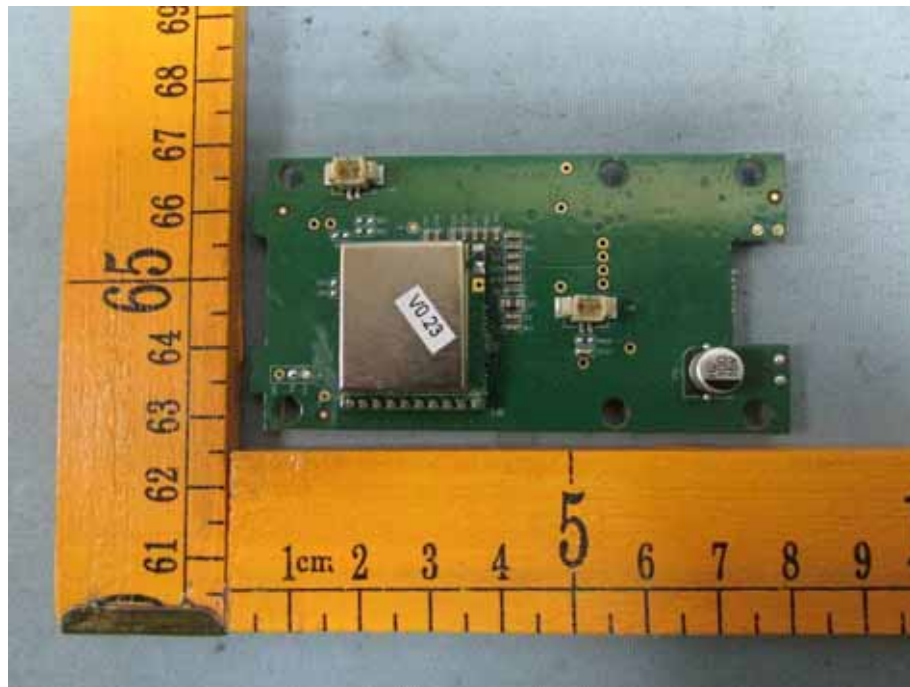




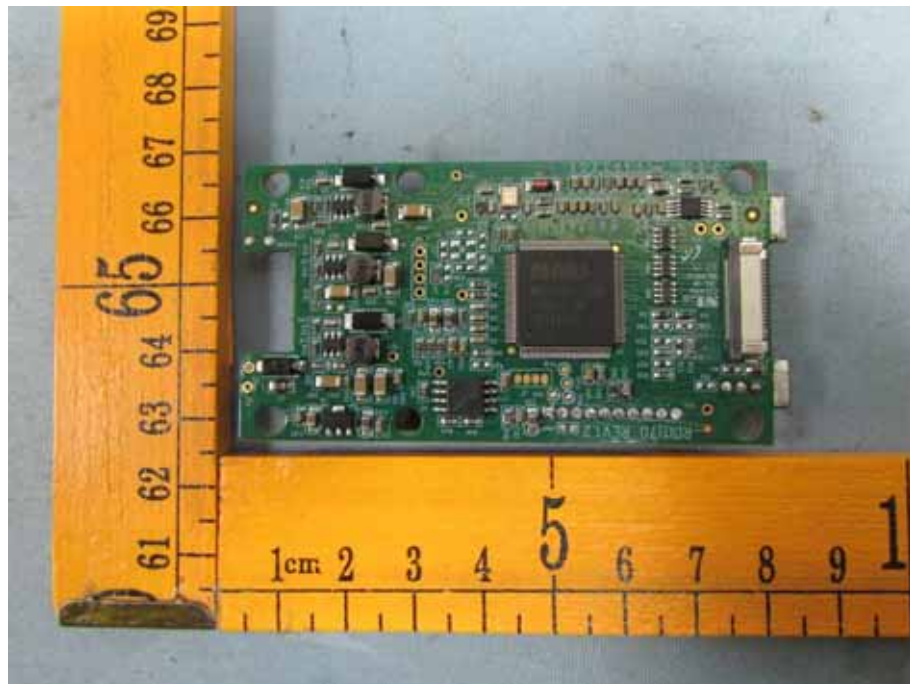
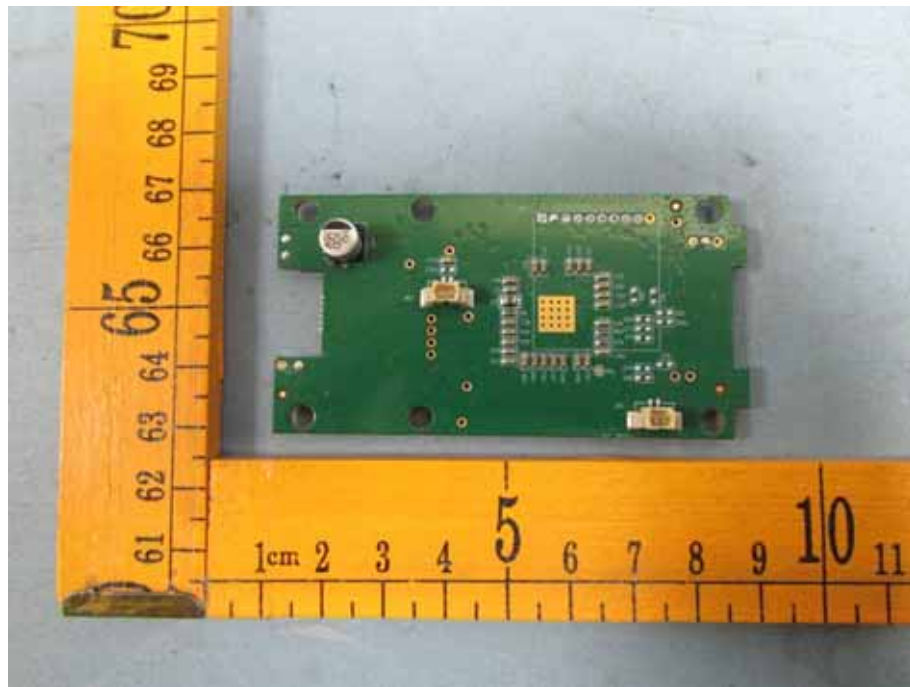


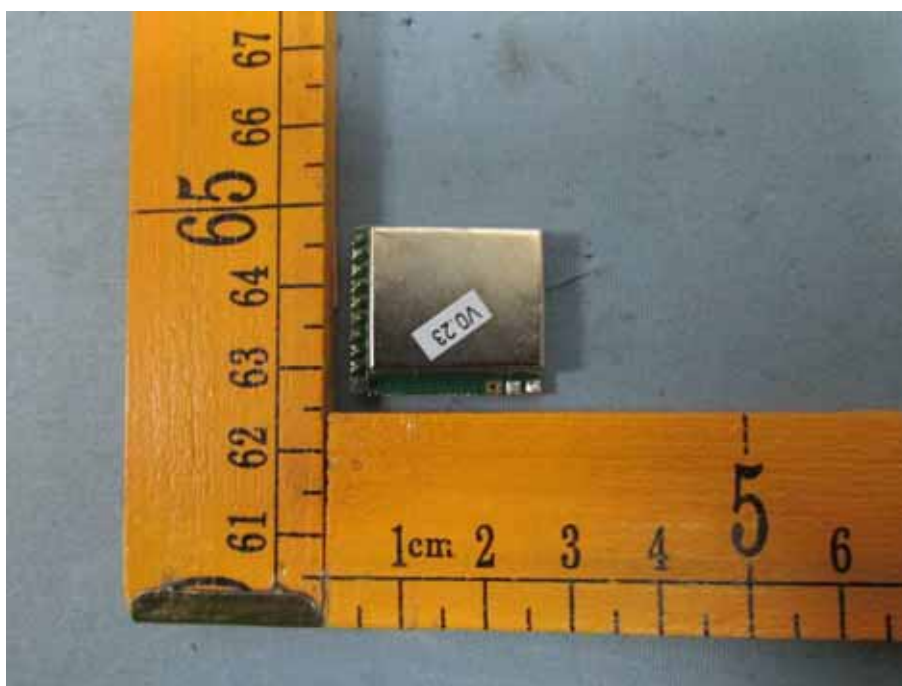
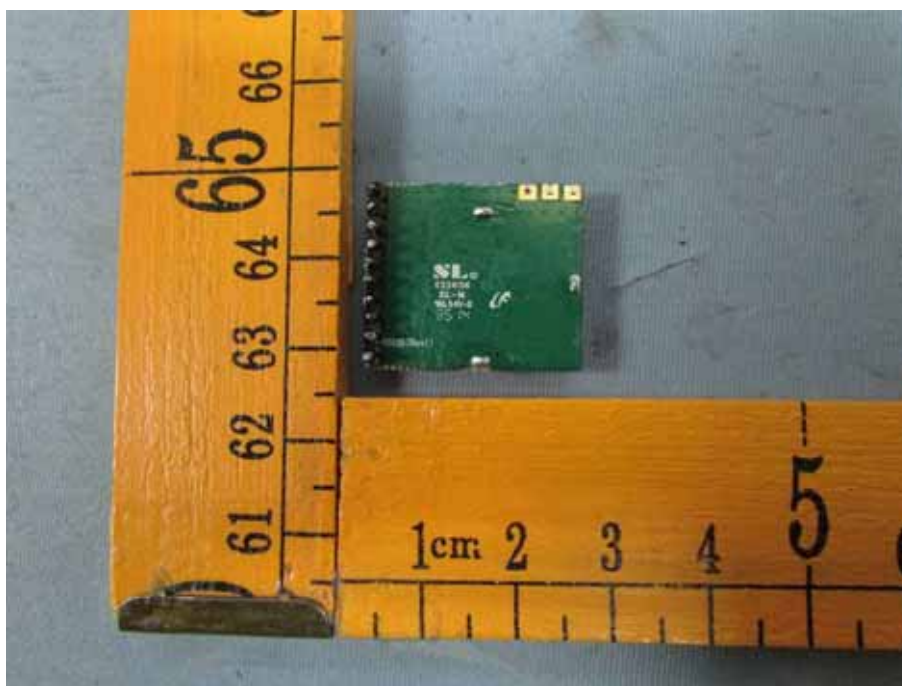
### 15.2 Model CA641 - Internal View

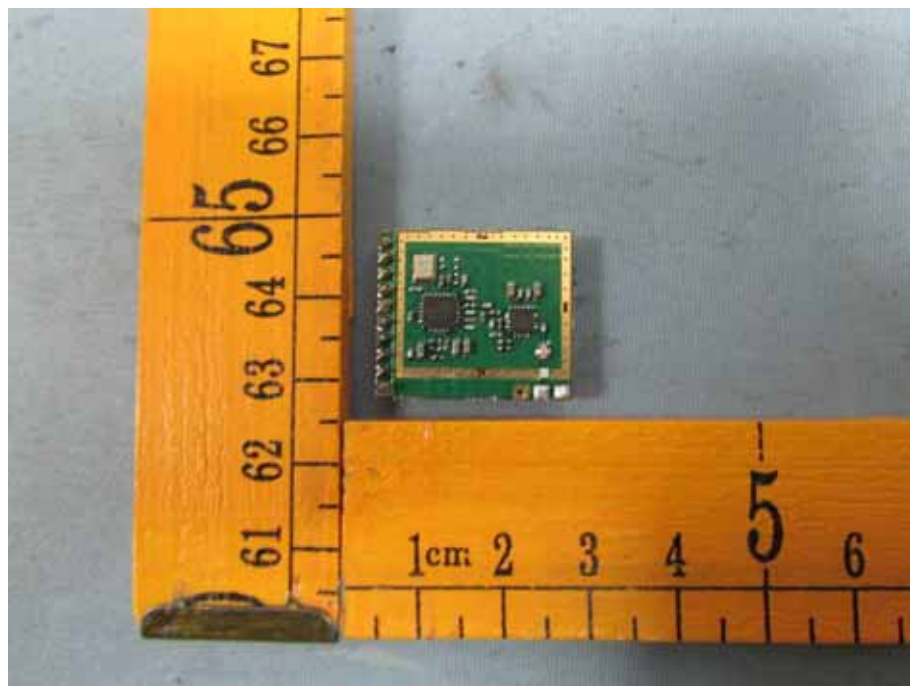






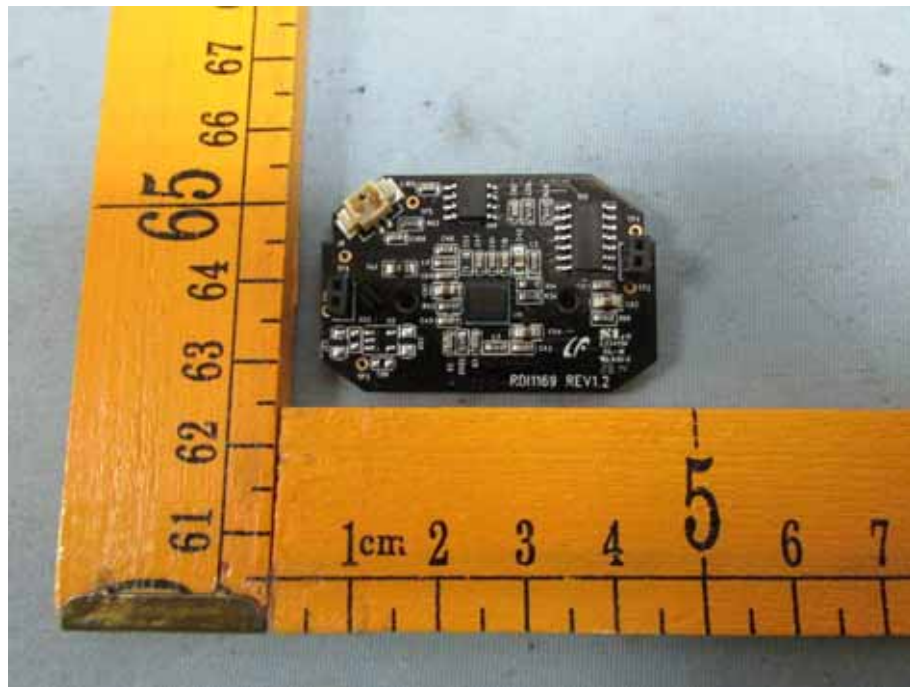












====End of Report====