

## 5.2 Radiated power of the fundamental wave

For test instruments and accessories used see section 6 Part CPR 3.

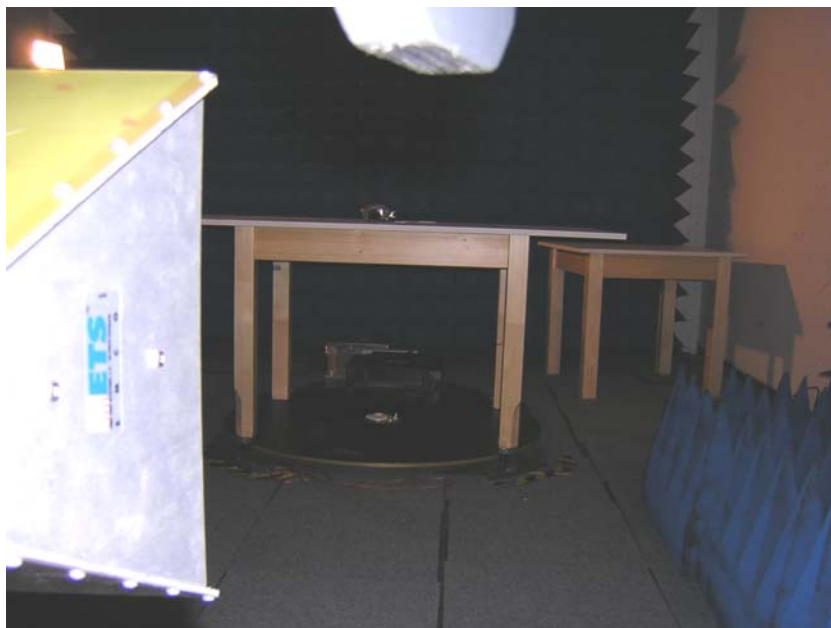
### 5.2.1 Description of the test location

Test location: Anechoic Chamber A2

Test distance: 3m

### 5.2.2 Photo documentation of the test set-up

#### Vorderbacke (VB)



Fersenautomatik (FA)



### 5.3 Radiated emissions (electric field) 30 MHz – 40 GHz

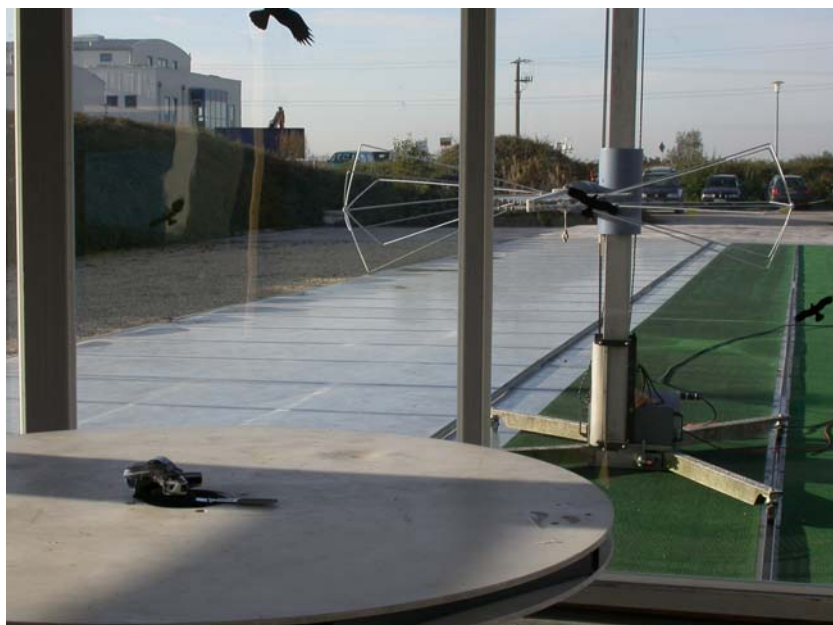
For test instruments and accessories used see section 6 Part SER 2, SER 3.

#### 5.3.1 Description of the test location

Test location: OATS1  
Test location: Anechoic Chamber A2  
Test distance: 3m

#### 5.3.2 Photo documentation of the test set-up

Vorderbacke (VB)  
Test location: OATS 1



**Vorderbacke (VB)**  
**Test location: Anechoic chamber A2**



Fersenautomatik (FA)  
Test location: OATS 1



Fersenautomatik (FA)  
Test location: Anechoic chamber A2



## 5.4 Correction for Pulse Operation (Duty Cycle)

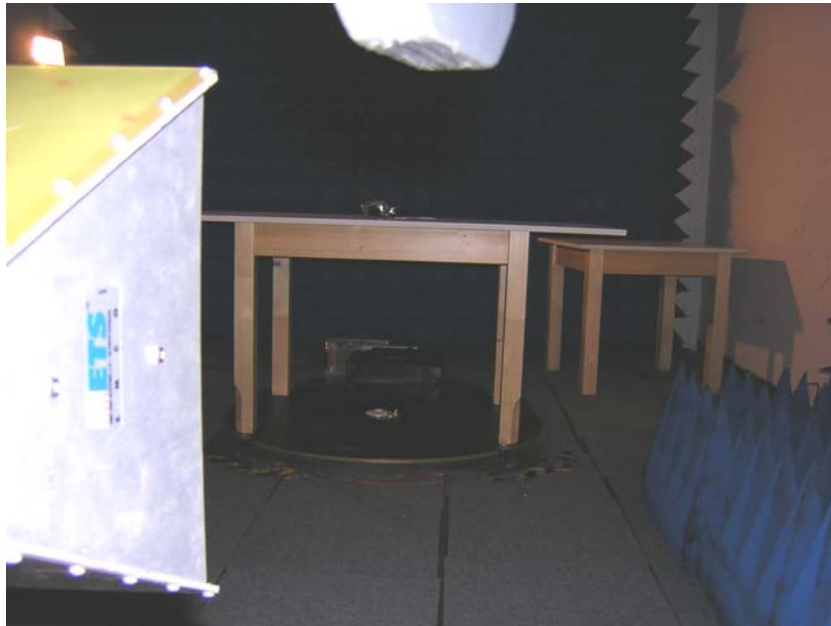
For test instruments and accessories used see section 6 Part DC.

### 5.4.1 Description of the test location

Test location: Anechoic Chamber A2

### 5.4.2 Photo documentation of the test set-up

#### Vorderbacke (VB)



Fersenautomatik (FA)





## 5.5 6dB Bandwidth Measurement

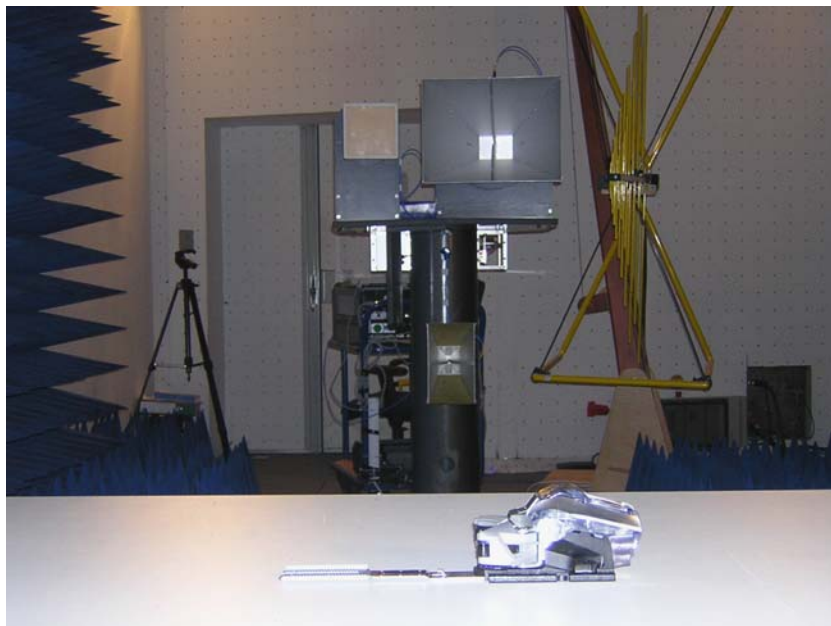
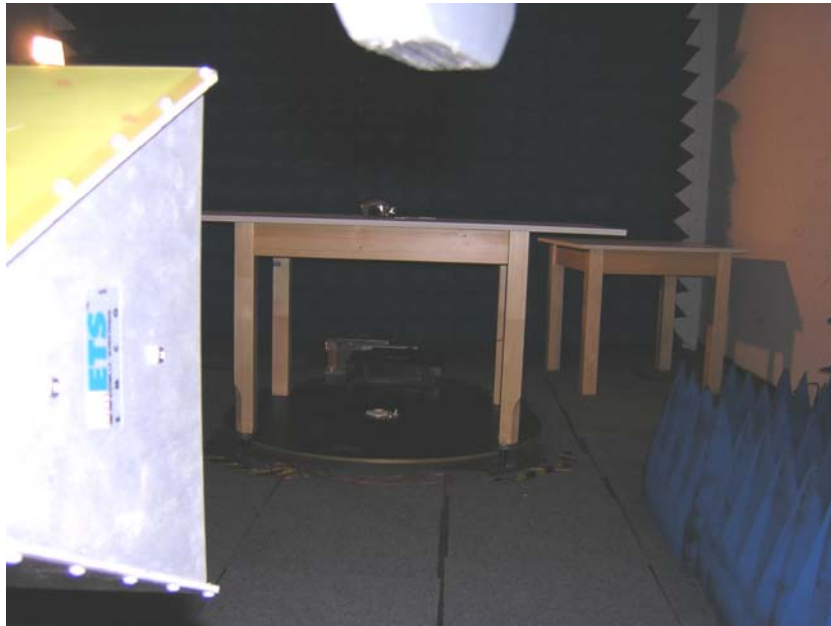
For test instruments and accessories used see section 6 Part **BW**.

### 5.5.1 Description of the test location

Test location: Anechoic Chamber A2

### 5.5.2 Photo documentation of the test set-up

#### Vorderbacke (VB)



Fersenautomatik (FA)



## 5.6 Peak Power Density

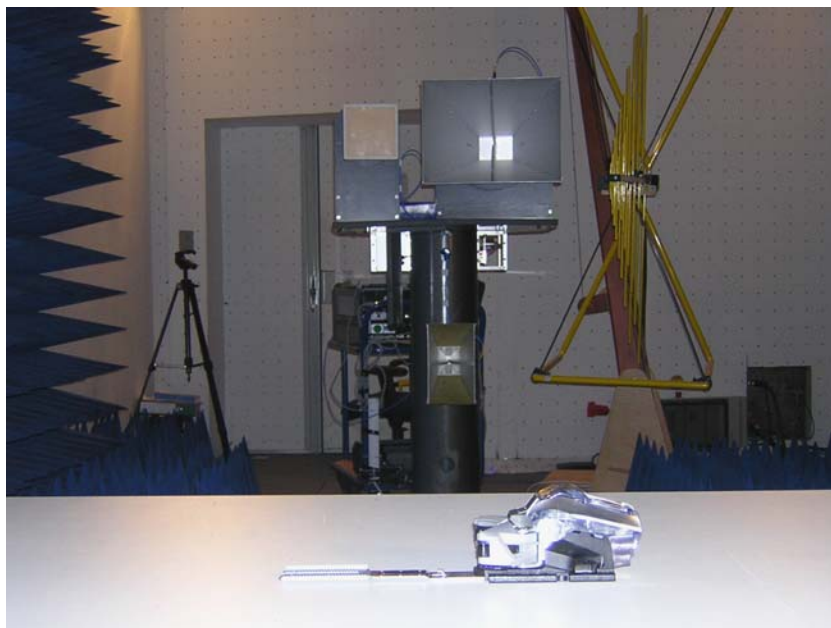
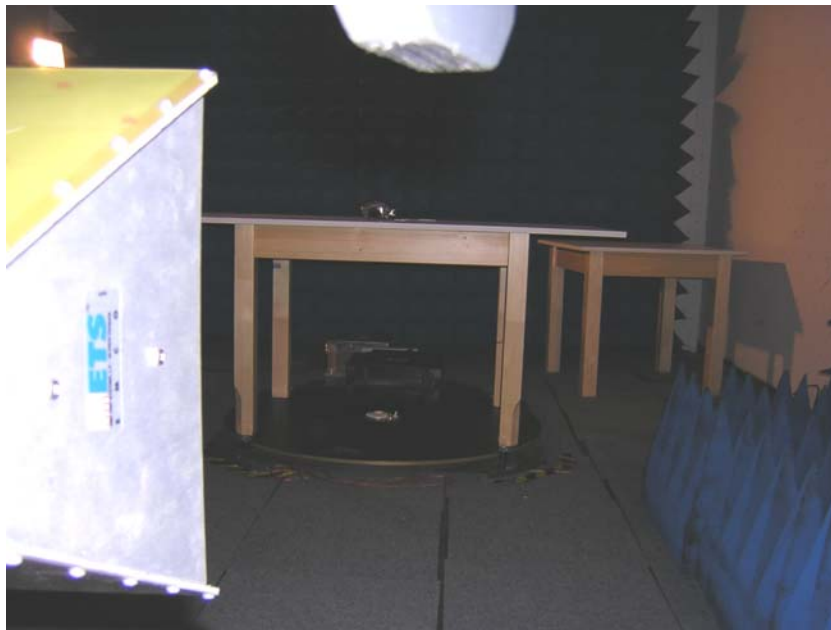
For test instruments and accessories used see section 6 Part PPD.

### 5.6.1 Description of the test location

Test location: Anechoic Chamber A2

### 5.6.2 Photo documentation of the test set-up

#### Vorderbacke (VB)



Fersenautomatik (FA)

