

9. Positioning of Lables and Content of Data Matrix Code

Two labels should be attached to the housing. One on the bottom of the Bottom part centered horizontal and vertical. The label on the right side of the Top part should be positioned in a way that the label covers both parts, acting as a seal against opening the housing. The side label must be aligned horizontal on the edge of the bottom part, and aligned centered in the vertical plane.

Please note that the right view in [Figure 15](#) is relative to the top view. (Top rotated by 90° in the horizontal plane).

The dimensions and the content of the data matrix can be found in Figure 15: [Label Positioning and Data Matrix Content](#) in this chapter.

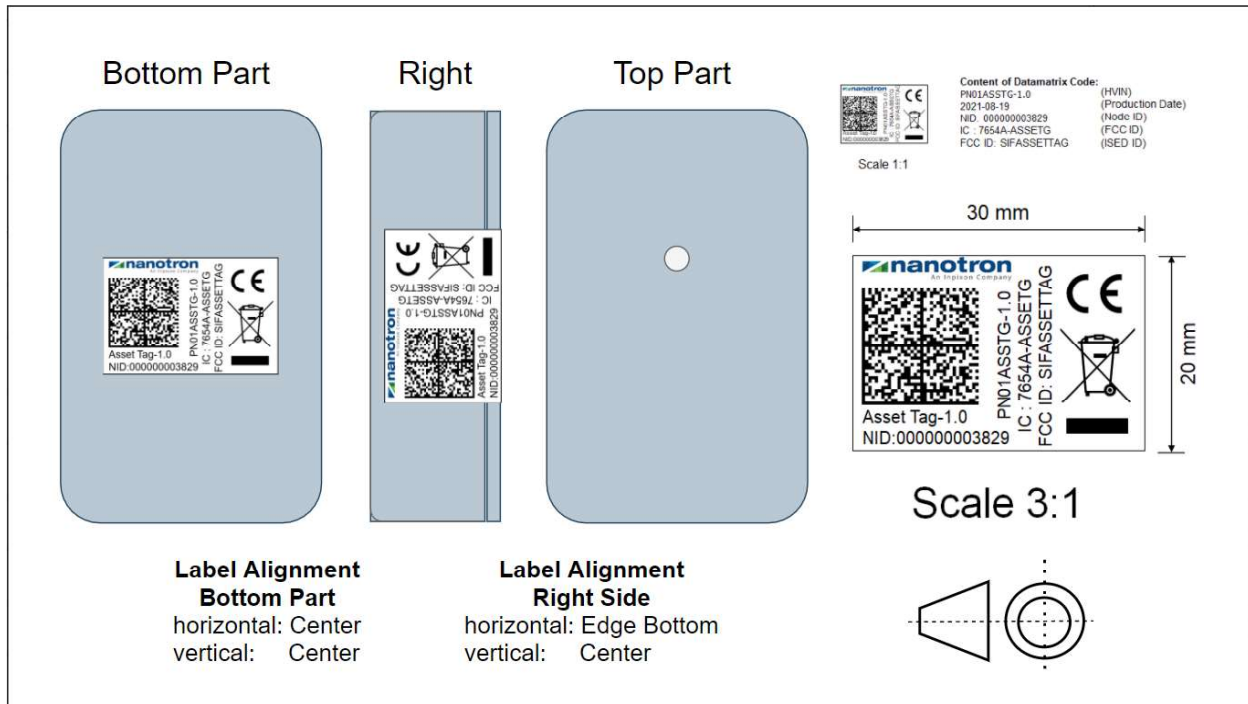


Figure 15: Label Positioning and Data Matrix Content