

## Bluetooth

Frequency: 2441 MHz; Duty Cycle: 1:1; Room Ambient Temperature: 24.0°C; Liquid Temperature: 23.5°C  
Medium parameters used (interpolated):  $f = 2441$  MHz;  $\sigma = 1.949$  S/m;  $\epsilon_r = 51.439$ ;  $\rho = 1000$  kg/m<sup>3</sup>

DASY5 Configuration:

- Area Scan Setting - Find Secondary Maximum Within: 2.0 dB and with a peak SAR value greater than 0.0012W/kg
- Electronics: DAE4 Sn877; Calibrated: 2012/03/16
- Probe: EX3DV4 - SN3665; ConvF(7.11, 7.11, 7.11); Calibrated: 2012/04/27;
- Sensor-Surface: 1.4mm (Mechanical Surface Detection)
- Phantom: ELI 4.0; Type: QDOVA001BA; Serial: 1056

**Rear Side/Touch/3DH5/CH39/Area Scan (6x6x1):** Measurement grid: dx=12mm, dy=12mm

[Info: Interpolated medium parameters used for SAR evaluation.](#)

Maximum value of SAR (measured) = 0.0196 W/kg

**Rear Side/Touch/3DH5/CH39/Zoom Scan (7x7x7)/Cube 0:** Measurement grid: dx=5mm, dy=5mm, dz=5mm

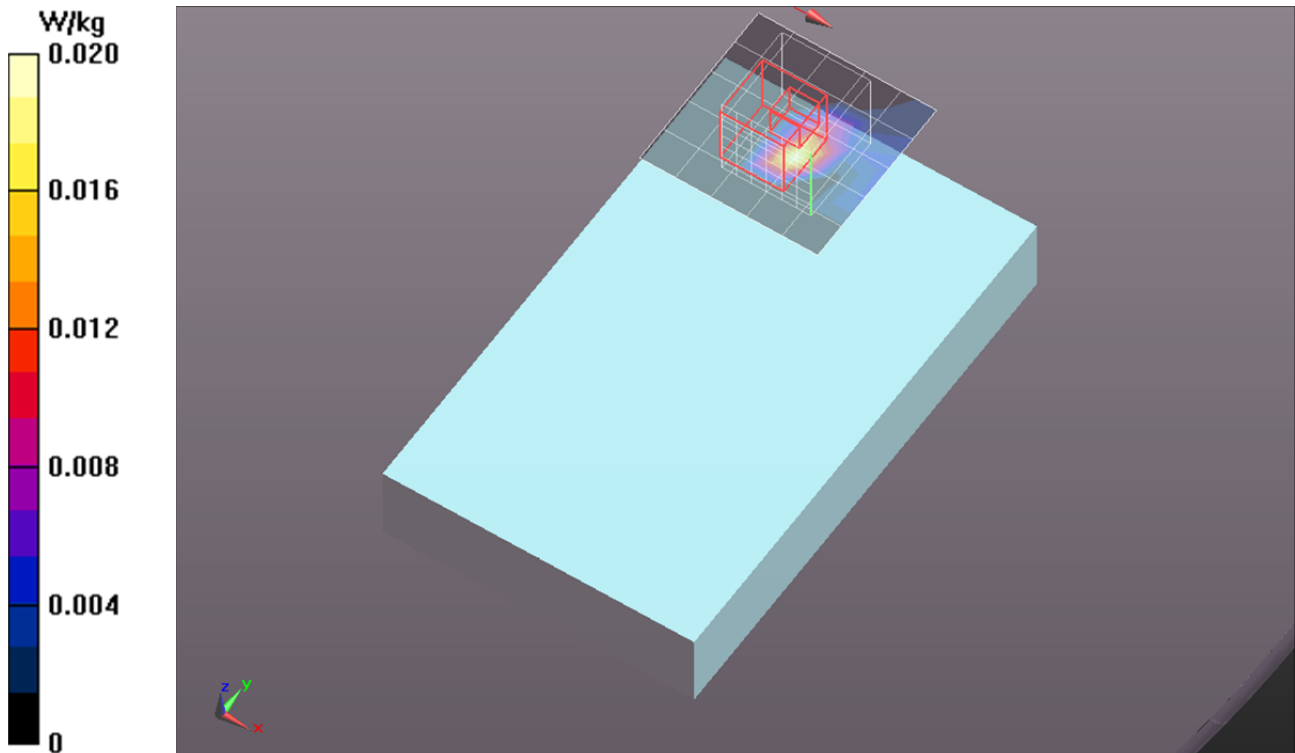
Reference Value = 0 V/m; Power Drift = 0.00 dB

Peak SAR (extrapolated) = 0.0600 W/kg

**SAR(1 g) = 0.010 W/kg; SAR(10 g) = 0.00332 W/kg**

[Info: Interpolated medium parameters used for SAR evaluation.](#)

Maximum value of SAR (measured) = 0.0462 W/kg



## Bluetooth

Frequency: 2441 MHz; Duty Cycle: 1:1; Room Ambient Temperature: 24.0°C; Liquid Temperature: 23.5°C  
Medium parameters used (interpolated):  $f = 2441$  MHz;  $\sigma = 1.949$  S/m;  $\epsilon_r = 51.439$ ;  $\rho = 1000$  kg/m<sup>3</sup>

DASY5 Configuration:

- Area Scan Setting - Find Secondary Maximum Within: 2.0 dB and with a peak SAR value greater than 0.0012W/kg
- Electronics: DAE4 Sn877; Calibrated: 2012/03/16
- Probe: EX3DV4 - SN3665; ConvF(7.11, 7.11, 7.11); Calibrated: 2012/04/27;
- Sensor-Surface: 1.4mm (Mechanical Surface Detection)
- Phantom: ELI 4.0; Type: QDOVA001BA; Serial: 1056

**Edge/Edge3/3DH5/CH39/Area Scan (7x9x1):** Measurement grid: dx=12mm, dy=12mm

[Info: Interpolated medium parameters used for SAR evaluation.](#)

Maximum value of SAR (measured) = 0.0258 W/kg

**Edge/Edge3/3DH5/CH39/Zoom Scan (7x7x7)/Cube 0:** Measurement grid: dx=5mm, dy=5mm, dz=5mm

Reference Value = 3.225 V/m; Power Drift = -0.06 dB

Peak SAR (extrapolated) = 0.0480 W/kg

**SAR(1 g) = 0.00969 W/kg; SAR(10 g) = 0.00373 W/kg**

[Info: Interpolated medium parameters used for SAR evaluation.](#)

Maximum value of SAR (measured) = 0.0337 W/kg

