

WiFi 2.4GHz Band

Frequency: 2462 MHz; Duty Cycle: 1:1; Room Ambient Temperature: 24.0°C; Liquid Temperature: 23.5°C

Medium parameters used: $f = 2462.2 \text{ MHz}$; $\sigma = 1.978 \text{ S/m}$; $\epsilon_r = 51.384$; $\rho = 1000 \text{ kg/m}^3$

DASY5 Configuration:

- Area Scan Setting - Find Secondary Maximum Within: 2.0 dB and with a peak SAR value greater than 0.0012W/kg
- Electronics: DAE4 Sn877; Calibrated: 2012/03/16
- Probe: EX3DV4 - SN3665; ConvF(7.11, 7.11, 7.11); Calibrated: 2012/04/27;
- Sensor-Surface: 1.4mm (Mechanical Surface Detection)
- Phantom: ELI 4.0; Type: QDOVA001BA; Serial: 1056

Rear Side/Touch/802.11b/CH11/Area Scan (6x6x1): Measurement grid: dx=12mm, dy=12mm

Maximum value of SAR (measured) = 0.155 W/kg

Rear Side/Touch/802.11b/CH11/Zoom Scan (7x7x7)/Cube 0: Measurement grid: dx=5mm, dy=5mm,

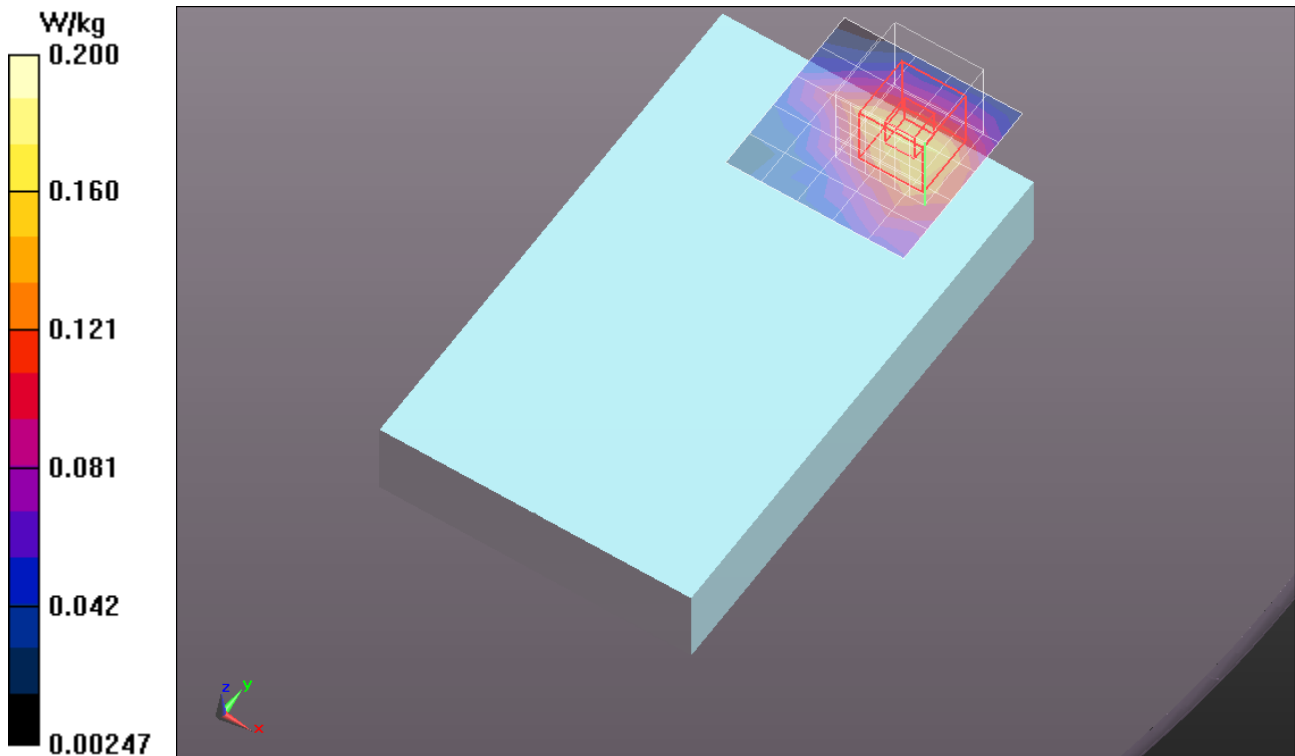
dz=5mm

Reference Value = 1.465 V/m; Power Drift = 0.15 dB

Peak SAR (extrapolated) = 0.201 W/kg

SAR(1 g) = 0.116 W/kg; SAR(10 g) = 0.065 W/kg

Maximum value of SAR (measured) = 0.170 W/kg



WiFi 2.4GHz Band

Frequency: 2462 MHz; Duty Cycle: 1:1; Room Ambient Temperature: 24.0°C; Liquid Temperature: 23.5°C
Medium parameters used: $f = 2462.2$ MHz; $\sigma = 1.978$ S/m; $\epsilon_r = 51.384$; $\rho = 1000$ kg/m³

DASY5 Configuration:

- Area Scan Setting - Find Secondary Maximum Within: 2.0 dB and with a peak SAR value greater than 0.0012W/kg
- Electronics: DAE4 Sn877; Calibrated: 2012/03/16
- Probe: EX3DV4 - SN3665; ConvF(7.11, 7.11, 7.11); Calibrated: 2012/04/27;
- Sensor-Surface: 1.4mm (Mechanical Surface Detection)
- Phantom: ELI 4.0; Type: QDOVA001BA; Serial: 1056

Edge/Edge3/802.11b/CH11/Area Scan (7x6x1): Measurement grid: dx=12mm, dy=12mm

Maximum value of SAR (measured) = 0.367 W/kg

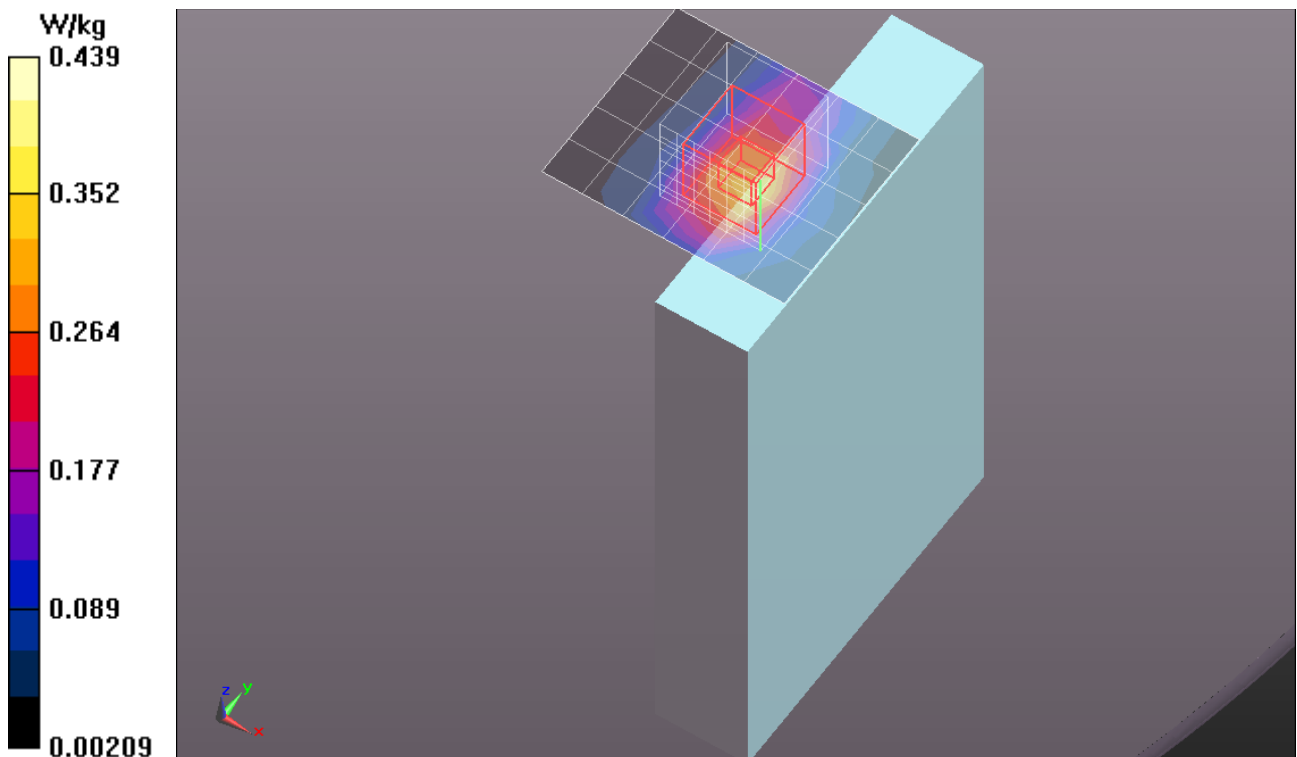
Edge/Edge3/802.11b/CH11/Zoom Scan (7x7x7)/Cube 0: Measurement grid: dx=5mm, dy=5mm, dz=5mm

Reference Value = 13.153 V/m; Power Drift = -0.15 dB

Peak SAR (extrapolated) = 0.544 W/kg

SAR(1 g) = 0.275 W/kg; SAR(10 g) = 0.141 W/kg

Maximum value of SAR (measured) = 0.439 W/kg



WiFi 2.4GHz Band

Frequency: 2462 MHz; Duty Cycle: 1:1

Edge/Edge3/802.11b/CH11/Z Scan (1x1x21): Measurement grid: dx=20mm, dy=20mm, dz=5mm
Maximum value of SAR (measured) = 0.301 W/kg

