



禾伸堂企業股份有限公司
台北市內湖區瑞湖街103號3樓之1
TEL:02-26596722 FAX:02-26596720

DT8 WiFi ANTENNA DATA SHEET

CUSTOMER : FOXCONN
VENDOR : 晶鈦國際電子股份有限公司
PART NUMBER : AH-JT-1335Y0311
DESCRIPTION : WiFi Antenna
Date : 2014/01/21



INDEX

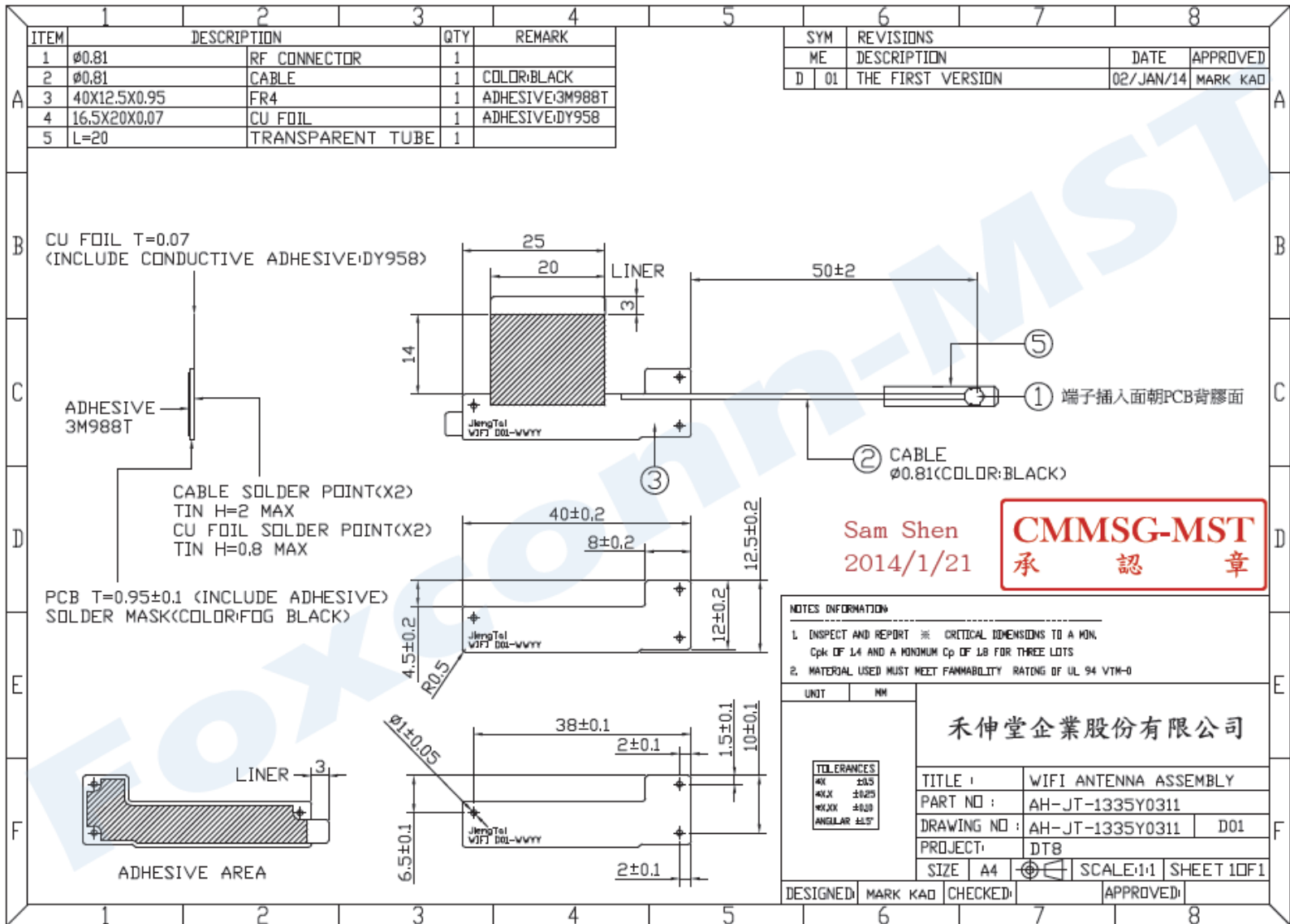
- Index P2
- Outline Drawing P3
- Antenna Related Data P4
- Test Methodology P5
- Test Result P7



JUST IN TIME

晶鈦國際電子股份有限公司

JIENG TAI International Electric CORP.(JTIE)





ANTENNA RELATED DATA

ITEM	SPECIFICATION
Frequency Band	2.4GHz~2.5GHz, 5.15GHz~5.85GHz
VSWR	2(Max)
Polarization	Linear
Peak Gain	3.3 dBi.
Impedance	50Ω
Coaxial Cable Type	0.81 coaxial cable



Test Equipment

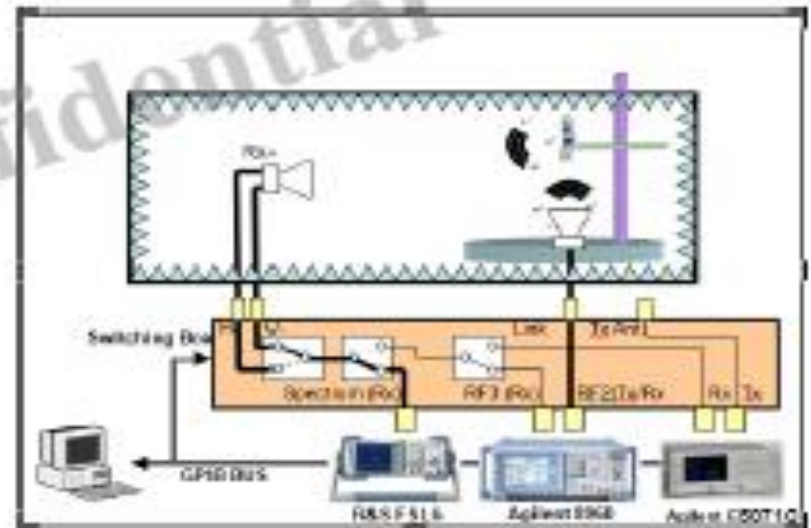
- VNA Test Setup
- Return Loss measurements (S_{11}) were performed using an R&S ZVB8 Network Analyzer





Test Equipment

- Anechoic Chamber Test Setup
- The antenna efficiency and gain were measured using a ETS AMS-8500 3-D anechoic chamber at JTIE.



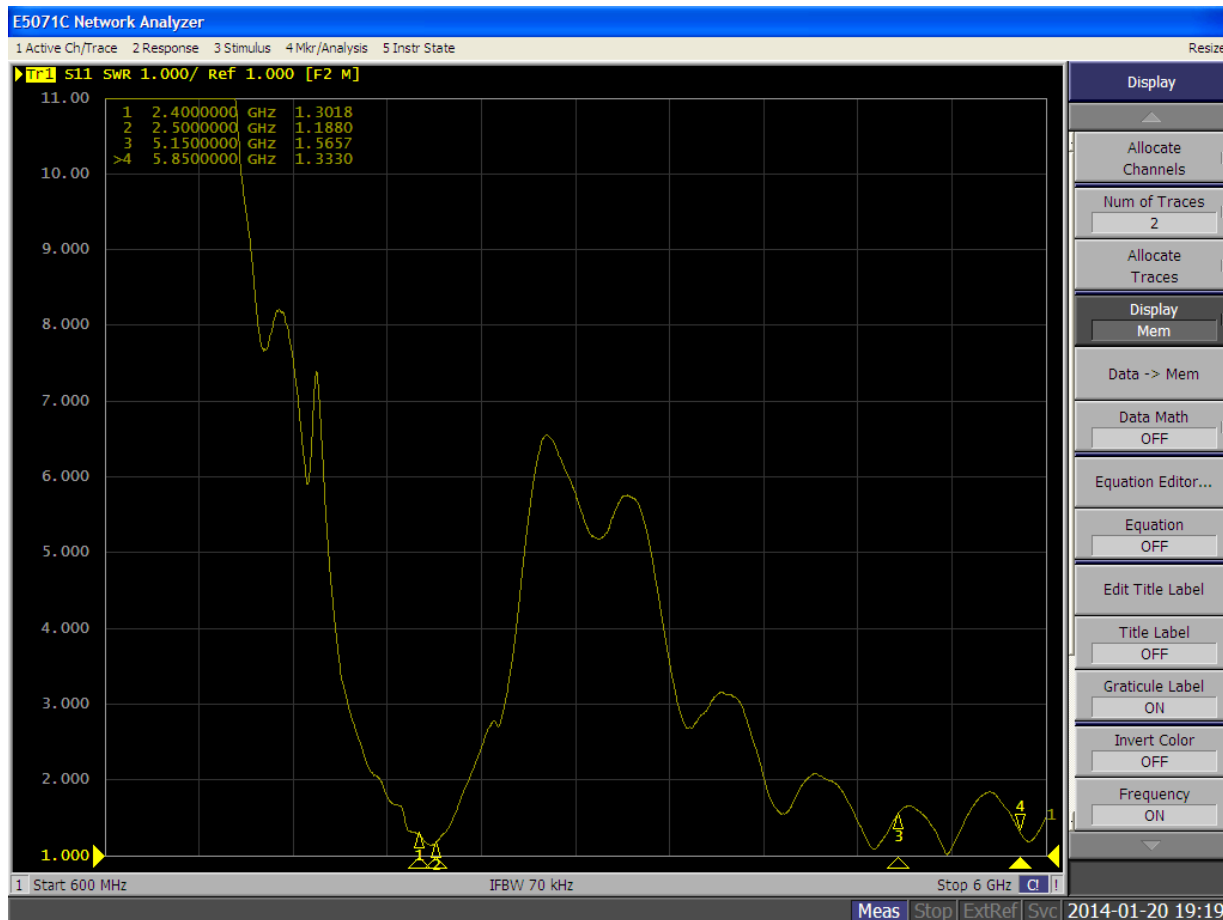


JUST IN TIME
晶鈦國際電子股份有限公司

JIENG TAI International Electric CORP.(JTIE)

Test Result

WIFI Antenna VSWR





JUST IN TIME

晶鈦國際電子股份有限公司

JIENG TAI International Electric CORP.(JTIE)

Test Result

■ WIFI Antenna performance

Frequency	Total Rad. Pow.(dBi)
2.4GHz	-2.38
2.45GHz	-2.66
2.5GHz	-2.97
5.15GHz	-3.10
5.35GHz	-2.55
5.47GHz	-2.43
5.725GHz	-2.97
5.875GHz	-2.86