

# Bluetooth Smart Controller



## User Guide

# Getting to Know Your Controller

Power/Pair Button  
Red LED-Player 1  
(multi-player mode only)

Player 2 Indicator  
(multi-player mode only)

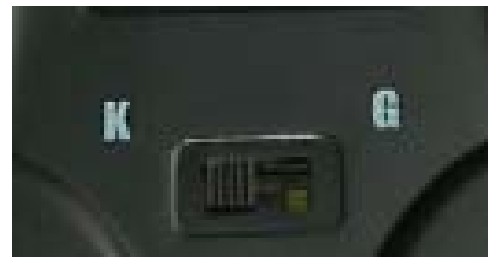


Power LED: Full Charge-Solid Green  
Low Battery-Flashing Every 3 Seconds  
Very Low Battery-Flashing Every Seconds

Bluetooth Connection  
Blue LED



USB Charging

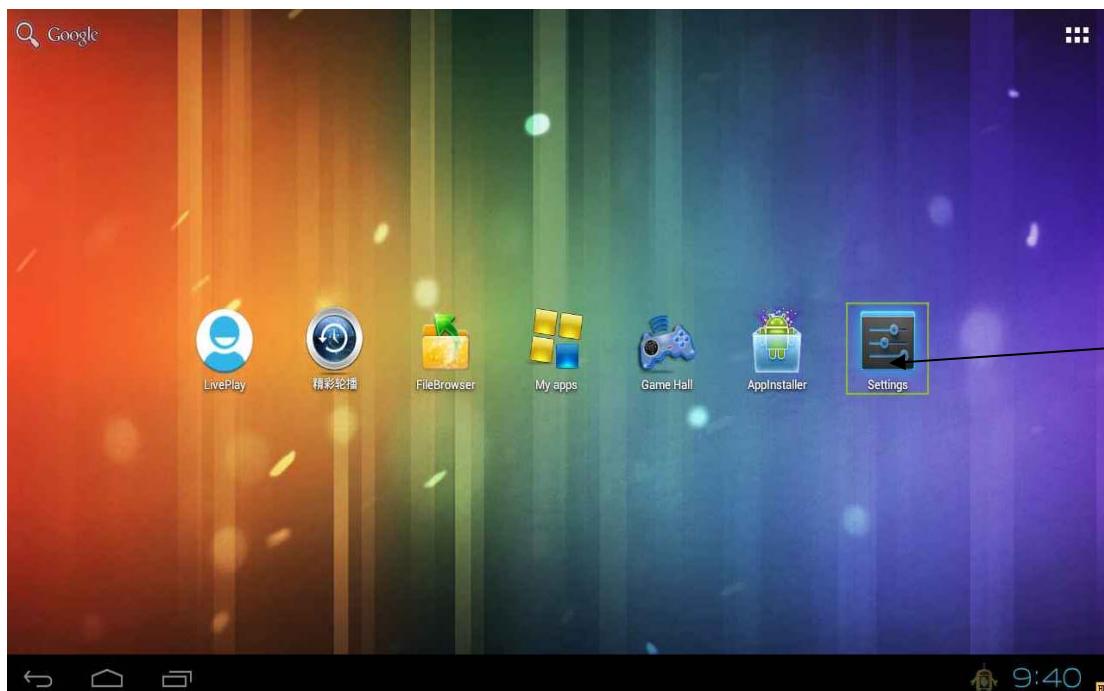


(Located on the Bottom of Controller)  
Mode Selector Switch: K-KeyBoard Mode  
G-Gamepad Mode

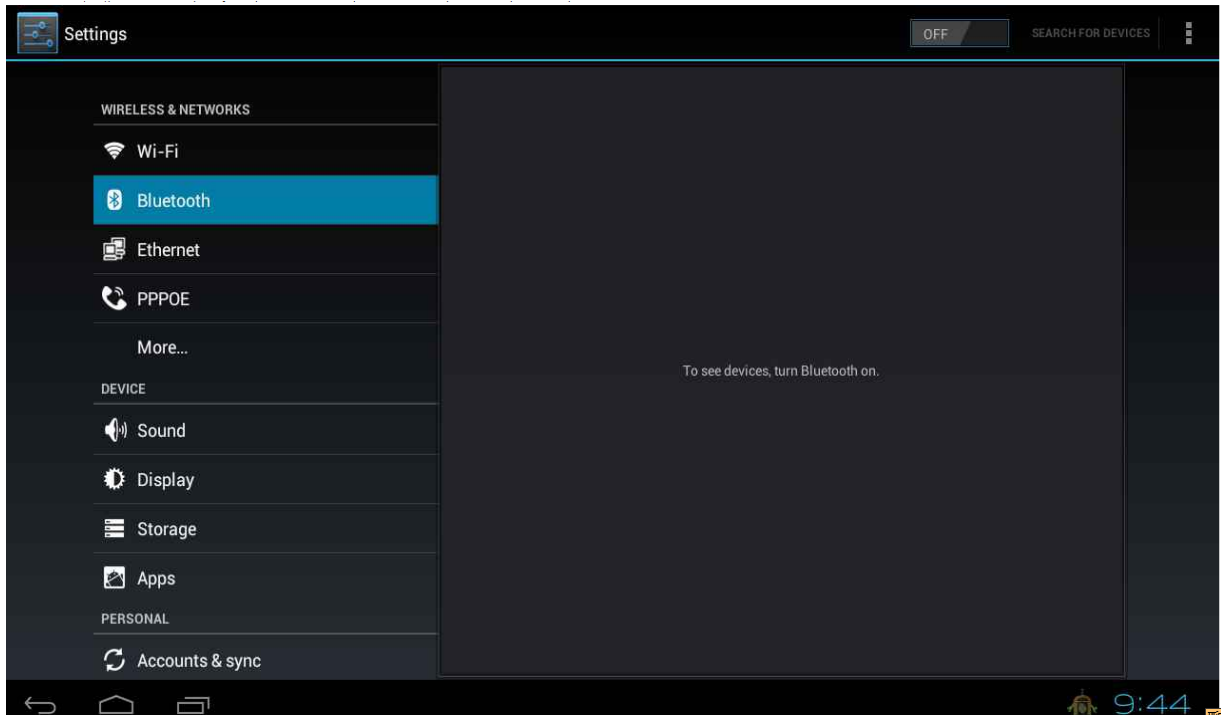
## Pairing Sequence



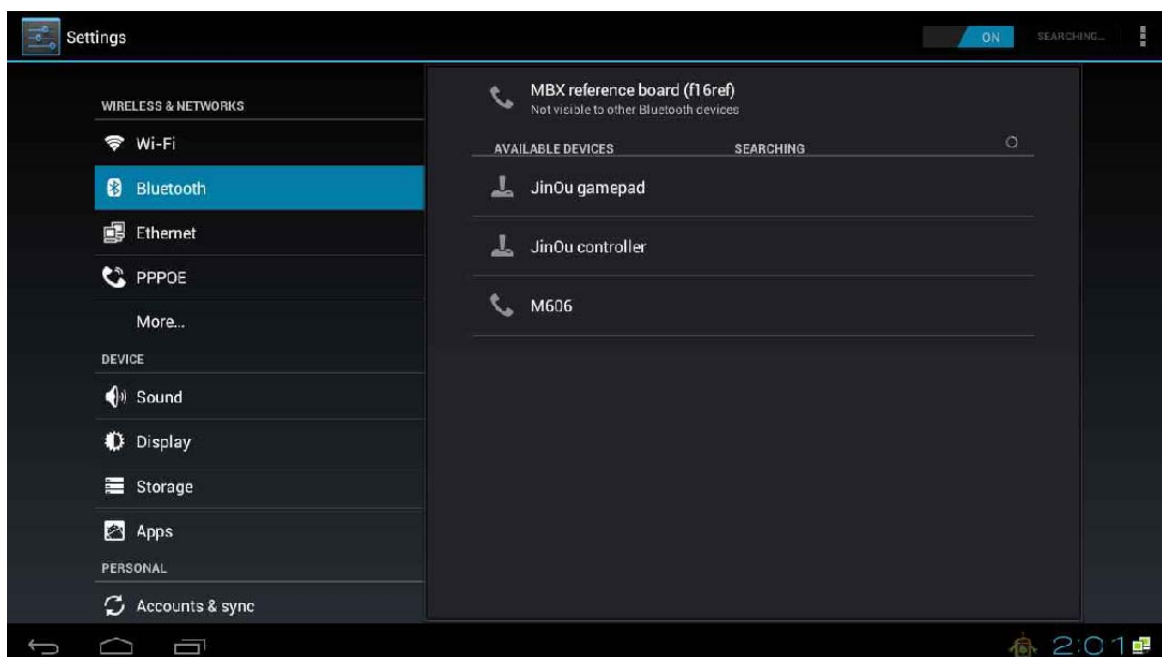
1. Press the power key until green light turns on and blue light flash. This is pairing status..



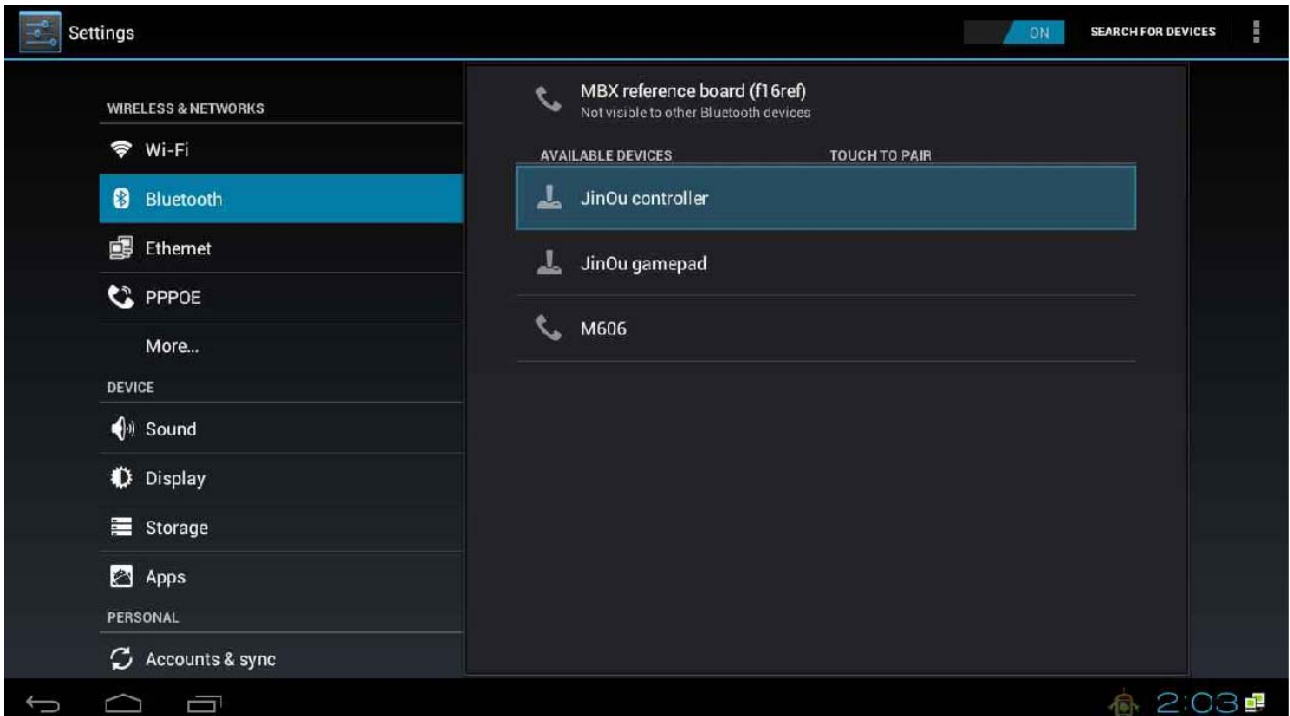
2. Select the “Setting” from the screen.



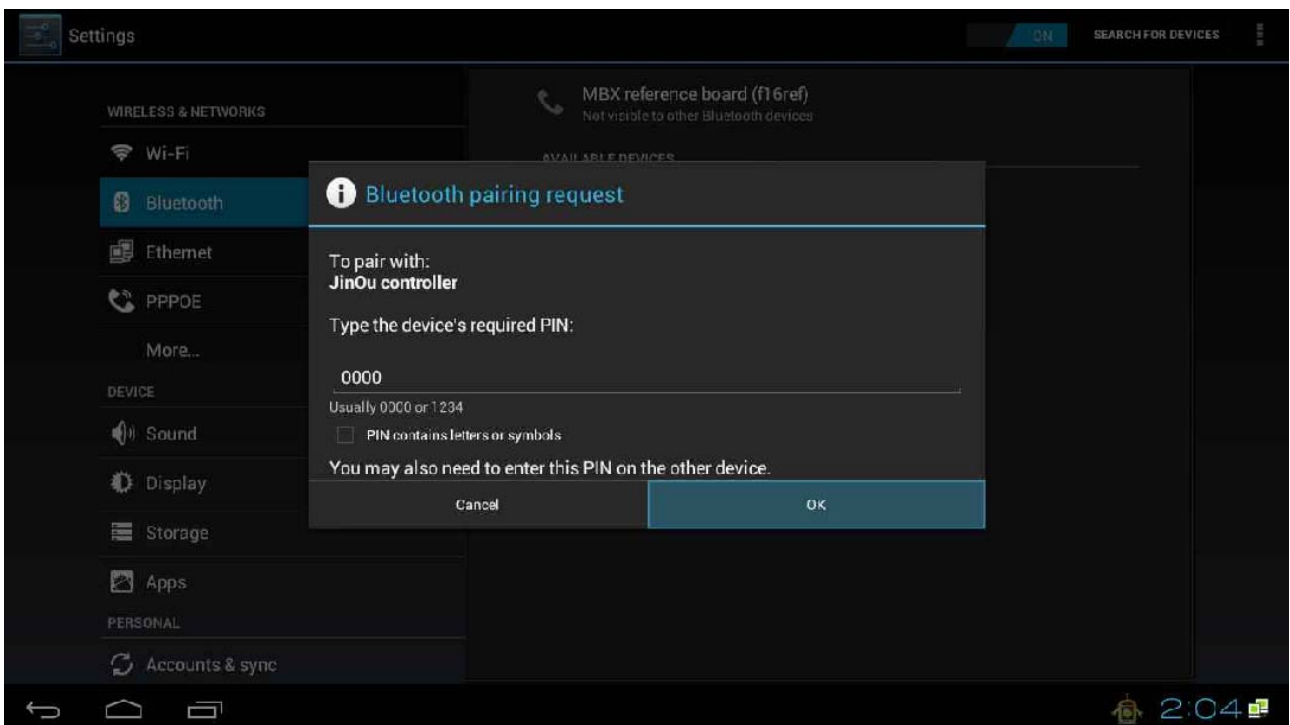
3. From the setting screen > select Bluetooth



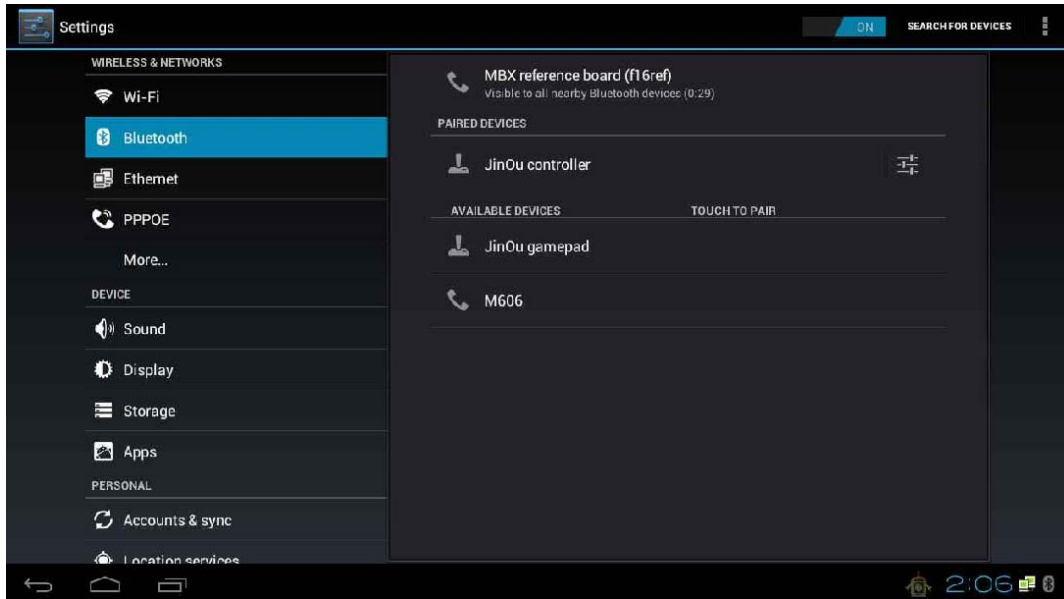
4. Searcher for devices



5. Select the device(JinOu controller) on the screen.



6. Password: 0000



7. Once connected, it will appear in the paired devices menu.

## Mode Select

**Notice: 1. This controller has two modes , K and G. Both modes should be paired at least once.**

### 1. K Mode





## 2. G Mode





### 3. Mouse Mode (ESCAPE+R2)



### 4. Multi-player Mode

#### Pairing:

Turn this two gamepads into the K mode.

1. Press the power key of player 1 until green light turns on and blue light flash. this is pairing status., then press the UP key and the LED will flash two times.

2. Press the power key of player 2 until green light turns on and blue light flash. this is pairing status. Seconds later, the led of both player 1 and player 2 will be red.

1. From the Setting page of TV, searching for the devices. Then, find the JINOUE Controller to pair.



#### Troubleshooting :

1. Not all of the games can compatible with these modes. Some games should play at K mode, some games should play at G mode. On the other hand, some games are not compatible with Mouse mode.

2. Iphone and ipad should be priority paired at K mode. If it won't work after pairing, that may be the reason of pairing at G mode.



**FCC Warning:**

This device complies with part 15 of the FCC Rules. Operation is subject to the following two conditions: (1) This device may not cause harmful interference, and (2) this device must accept any interference received, including interference that may cause undesired operation.

Any Changes or modifications not expressly approved by the party responsible for compliance could void the user's authority to operate the equipment.

**FCC Radiation Exposure Statement:**

This equipment complies with FCC RF radiation exposure limits set forth for an uncontrolled environment.

This transmitter must not be co-located or operating in conjunction with any other antenna or transmitter.