

Fig.6

Bottom view with Hard drive removed. Partial exposure of main logic board, also in view is the heatsink, 802.11 module and 802.15 module.

Fig.7

Same view as Fig.6 with the EMI sheet metal cover removed from the 802.11 module.

Fig.8

Top and bottom view of 802.11 module.

Fig.9

Bottom view with heatsink removed, 802.11 module removed, and 802.15 module removed. Visible in view is the entire bottom side of the main logic board, and the right and left antenna coax cables.

Fig.10

Bottom view of the heatsink/fan assembly and the 802.15/trackstick module with 802.15 antenna coax connected.

Fig.11

Bottom view of main logic board

Fig.12

Bottom view of main logic board removed from housing.

Fig.13

Top view of main logic board removed from housing.

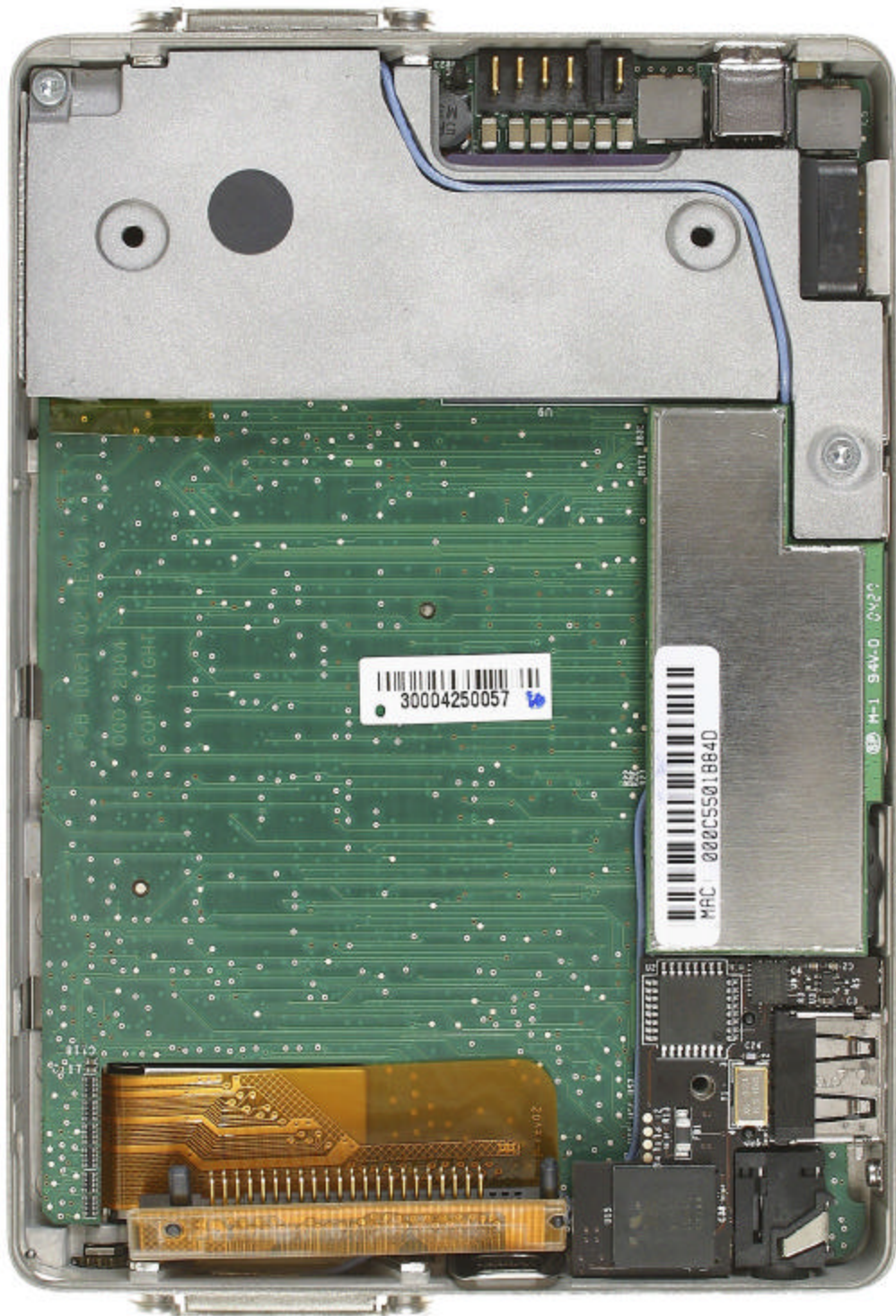


Fig. 6

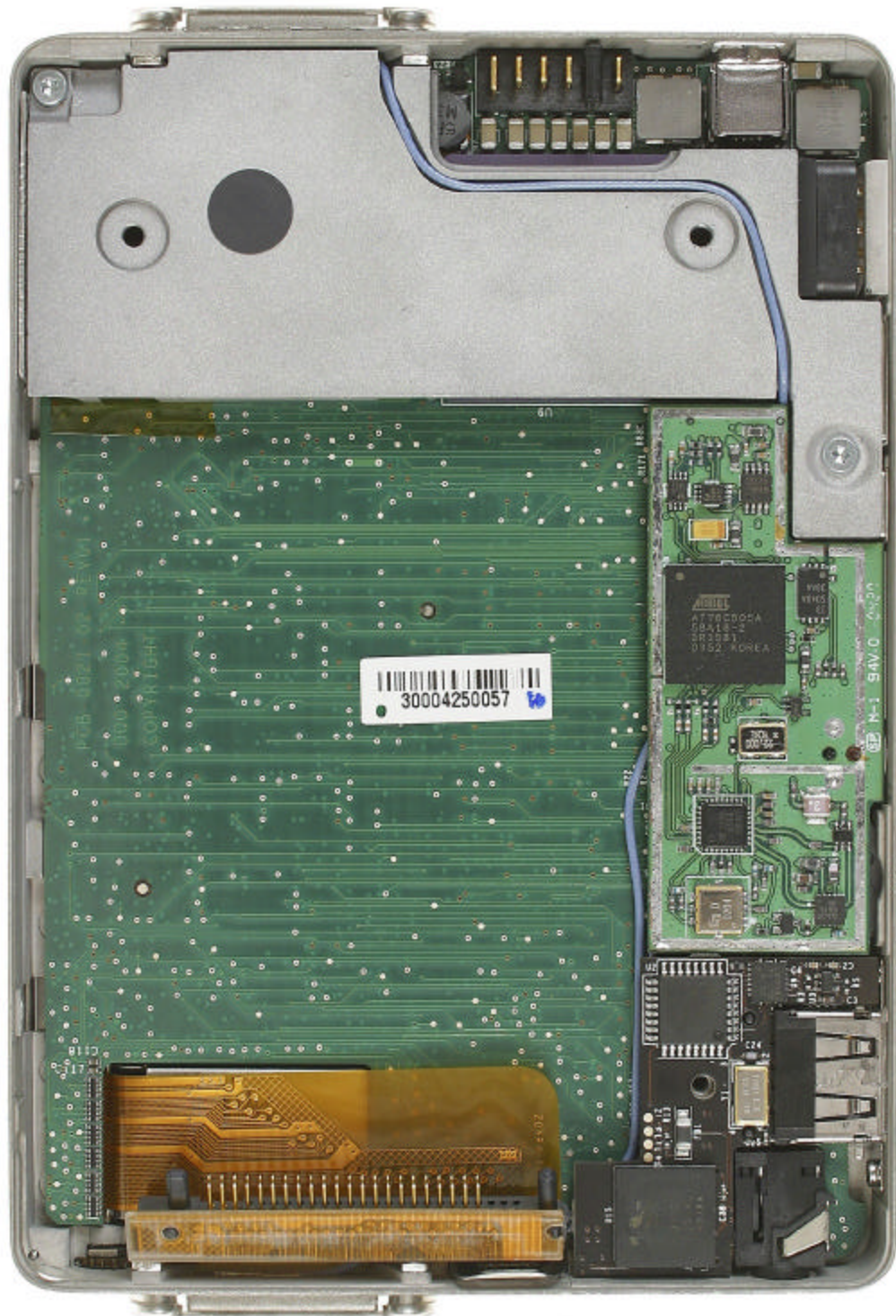


Fig. 7

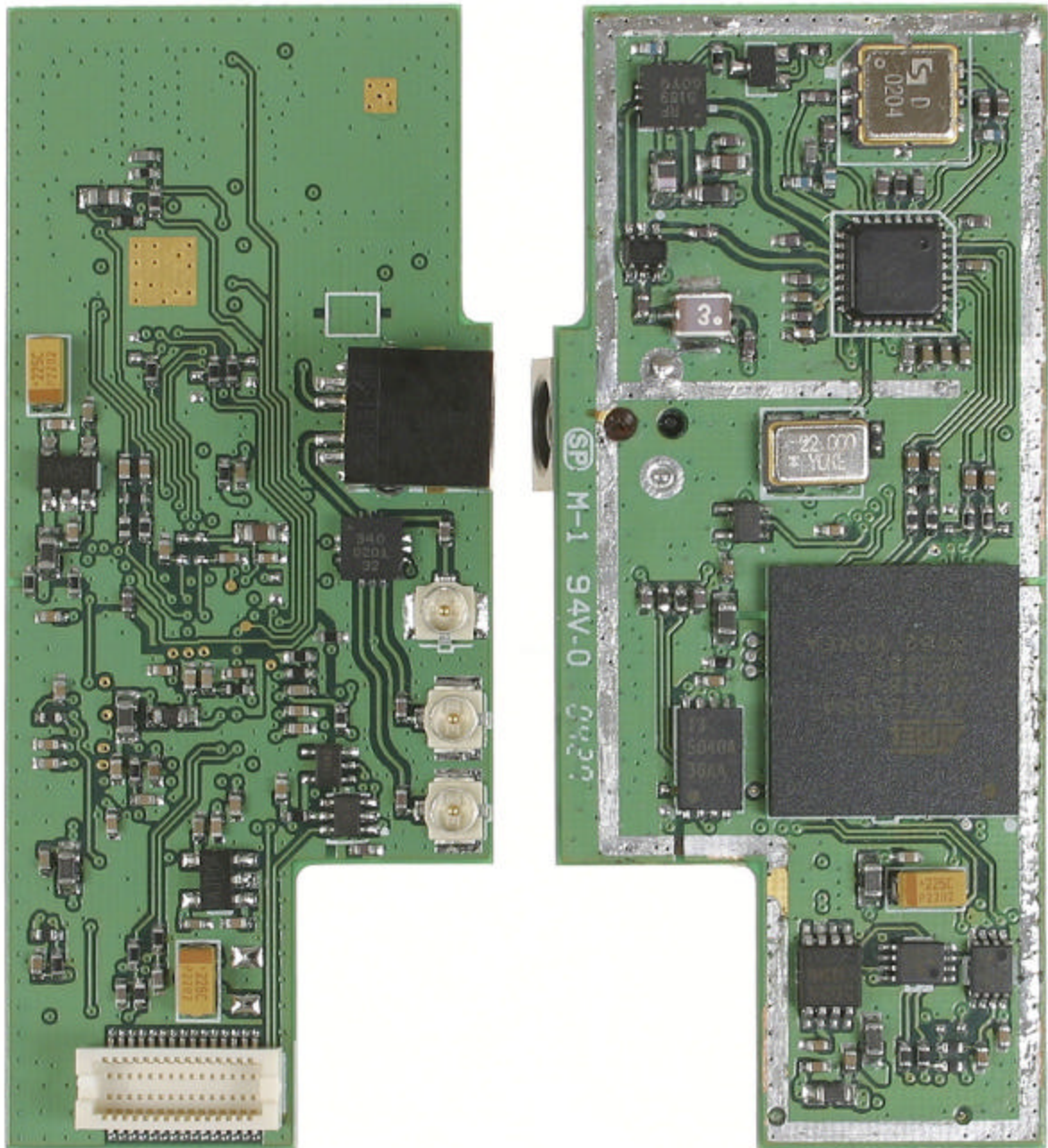


Fig. 8

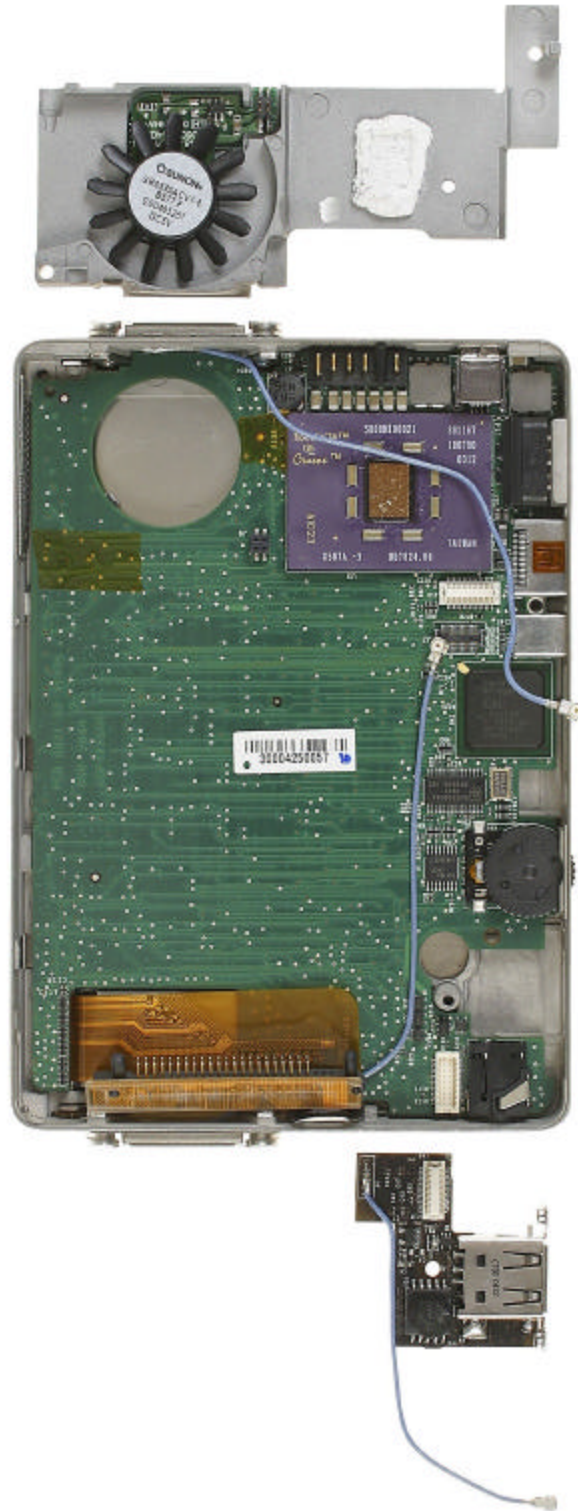


Fig. 9

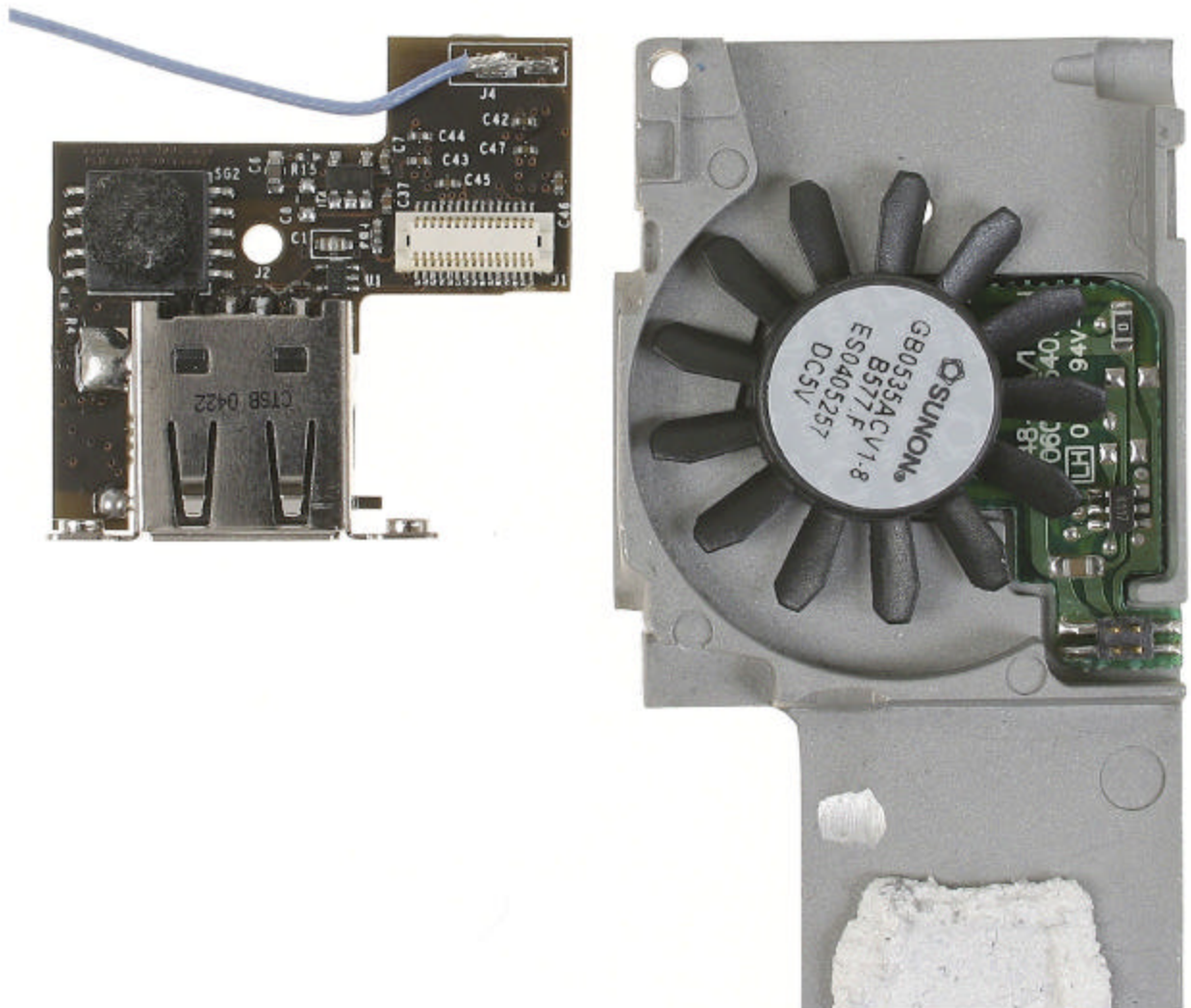


Fig. 10

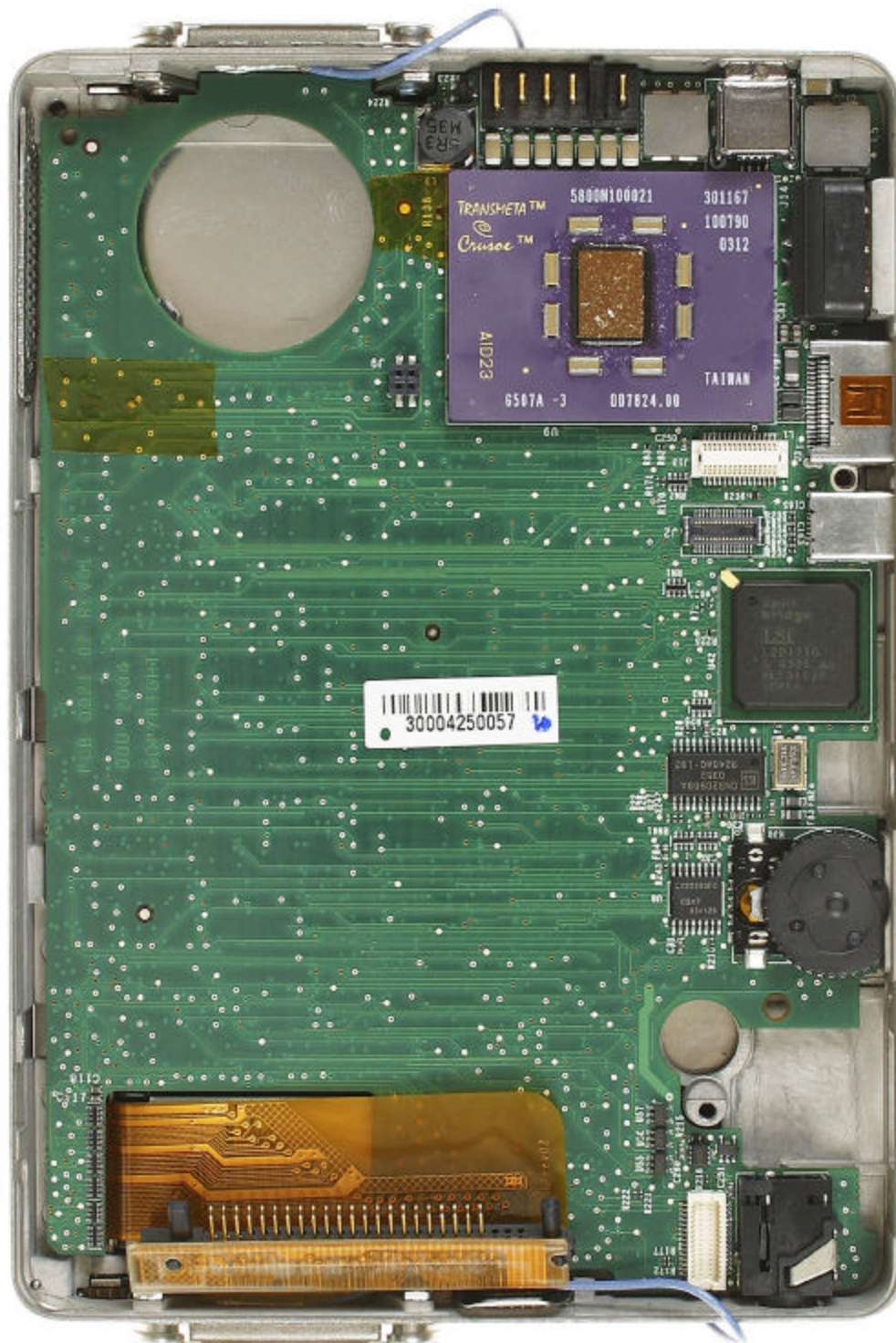


Fig. 11

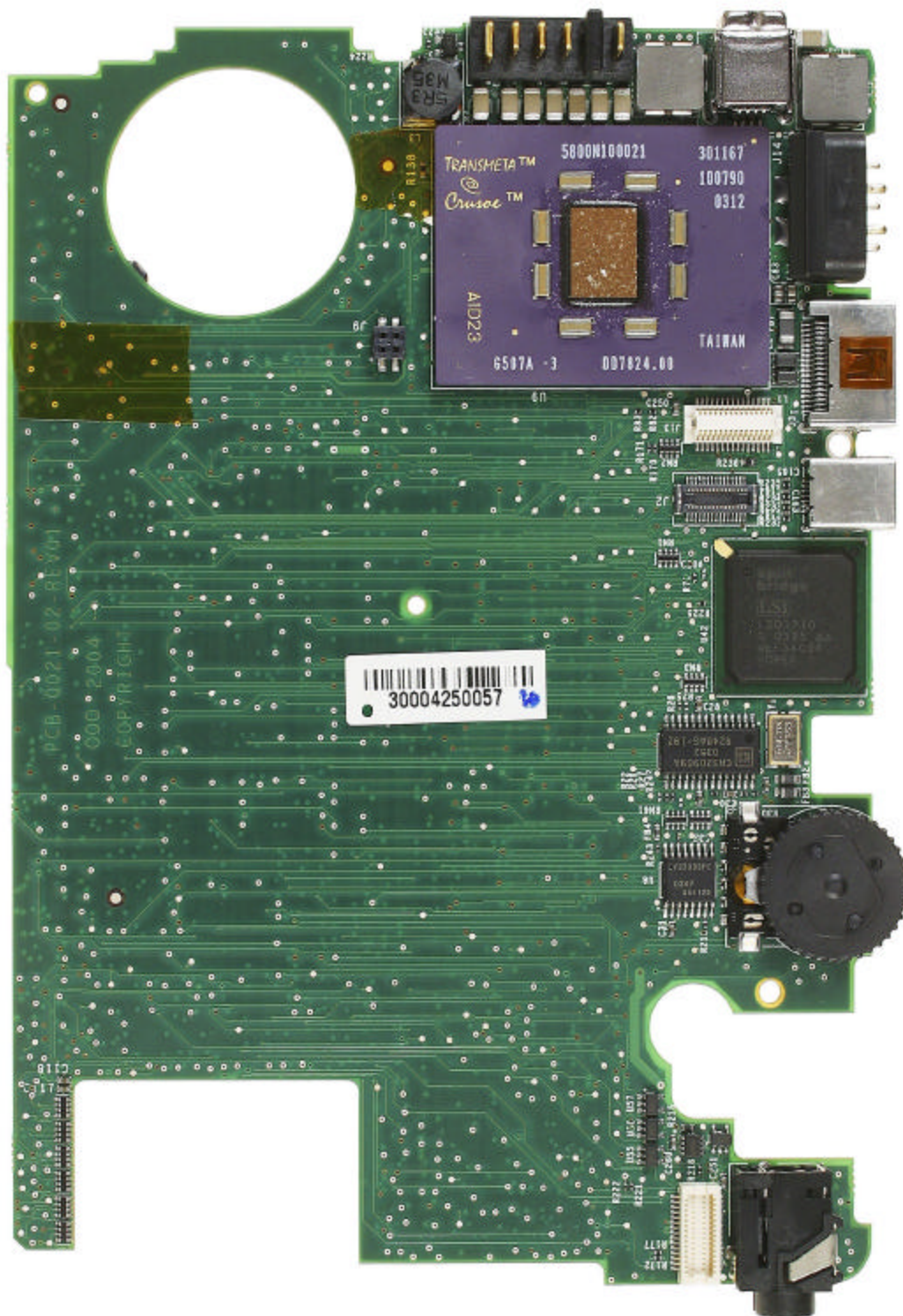


Fig. 12



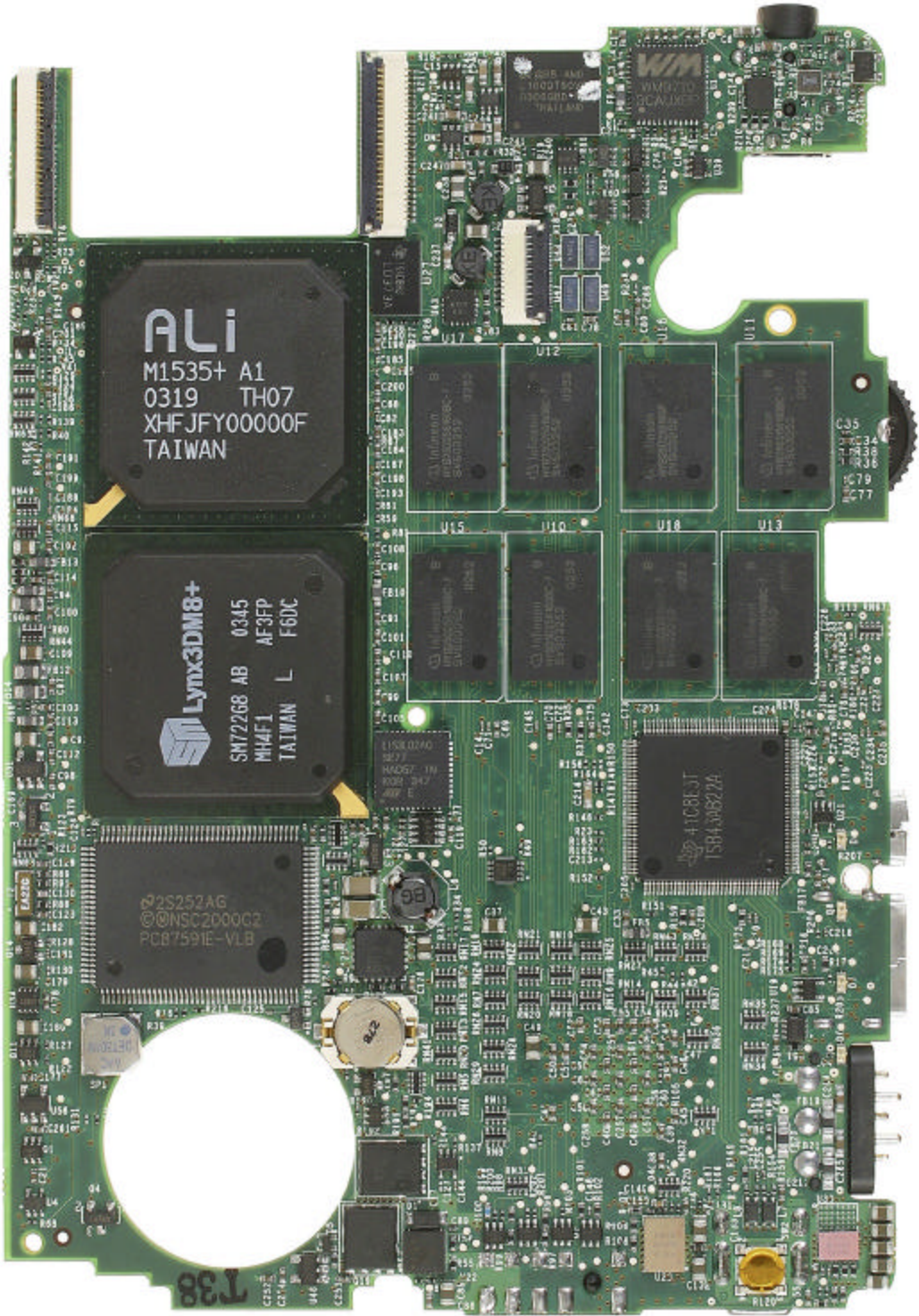


Fig. 13