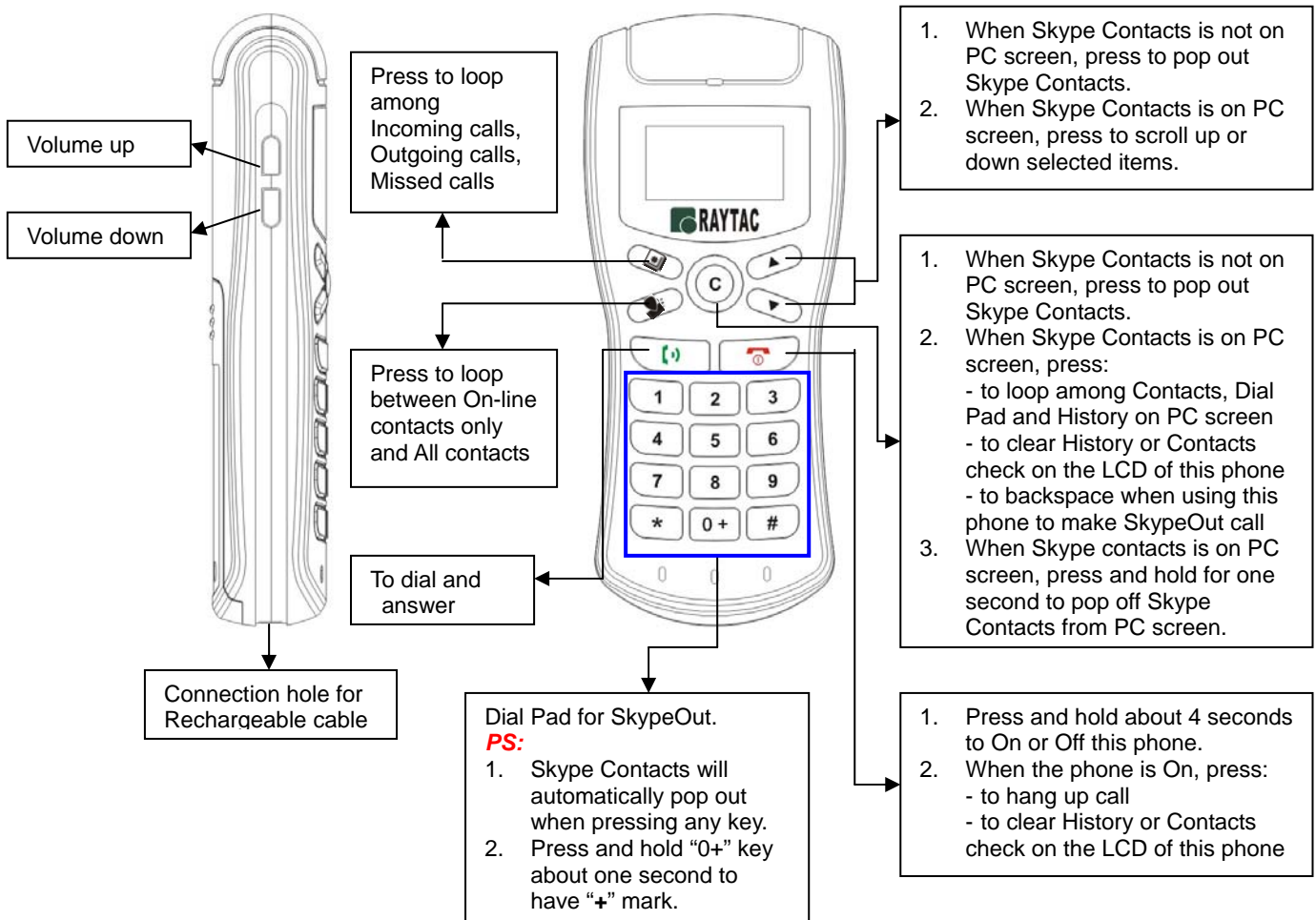


Operation guide on Raytac 2.4GHz Wireless VoIP Phone

Date: Mar.2, 2006

1. Operation guide of Handset



2. Icon meaning on LCD display

Top line on LCD display

- Phone connected to PC; - Phone disconnect to PC

- History, including - Missed calls, - Incoming calls, - Outgoing calls, - SkypeOut

- Contacts, - Online, - All (include Online and Offline)

- Hang up; - During dialing; - During speaking

- Volume indication

- Boost speaker volume (by pressing volume up key for 1 second); - Speaker mute (by pressing volume down key for 1 second)

- Phone user's status: Online, - Offline; - Skype Me, - Away; - Not Available; - Do not disturb, - Invisible

PS: Pressing scroll down key for one second to display and change phone user's status.

- Battery power indication

Second line on LCD display

- Contact is Online; - Contact is Offline

PS: Function or key icon might be changed without prior notice.

FCC Caution: Any changes or modifications not expressly approved by the party responsible for compliance could void the user's authority to operate this equipment.

This device complies with Part 15 of the FCC Rules. Operation is subject to the following two conditions: (1) This device may not cause harmful interference, and (2) this device must accept any interference received, including interference that may cause undesired operation.

The antenna(s) used for this transmitter must not be co-located or operating in conjunction with any other antenna or transmitter.