

# TEST REPORT

**FCC ID: SGPM6271901**

**Product: Wired/Wireless Gaming Mouse**

**Model No.: M627**

**Additional Model No.: N/A**

**Trade Mark: DELUX**

**Report No.: TCT190806E007**

**Issued Date: Aug. 09, 2019**

Issued for:

**Shenzhen Delux Industry Co., Ltd.**

**Delux Industrial Park, Lanzhu Street, New Pingshan District, Shenzhen City  
518118, China**

Issued By:

**Shenzhen Tongce Testing Lab.**

**1B/F., Building 1, Yibaolai Industrial Park, Qiaotou, Fuyong, Baoan District,  
Shenzhen, Guangdong, China**

**TEL: +86-755-27673339**

**FAX: +86-755-27673332**

**Note:** This report shall not be reproduced except in full, without the written approval of Shenzhen Tongce Testing Lab.

This document may be altered or revised by Shenzhen Tongce Testing Lab. personnel only, and shall be noted in the revision section of the document. The test results in the report only apply to the tested sample.

## TABLE OF CONTENTS

<b>1. Test Certification .....</b>	<b>3</b>
<b>2. Test Result Summary .....</b>	<b>4</b>
<b>3. EUT Description.....</b>	<b>5</b>
<b>4. General Information.....</b>	<b>7</b>
4.1. Test Environment and Mode.....	7
4.2. Description of Support Units.....	7
<b>5. Facilities and Accreditations .....</b>	<b>8</b>
5.1. Facilities .....	8
5.2. Location .....	8
5.3. Measurement Uncertainty .....	8
<b>6. Test Results and Measurement Data .....</b>	<b>9</b>
6.1. Antenna Requirement .....	9
6.2. Conducted Emission.....	10
6.3. Radiated Emission Measurement .....	14
6.4. 20dB Occupied Bandwidth .....	26
<b>Appendix A: Photographs of Test Setup</b>	
<b>Appendix B: Photographs of EUT</b>	

## 1. Test Certification

<b>Product:</b>	Wired/Wireless Gaming Mouse
<b>Model No.:</b>	M627
<b>Additional Model No.:</b>	N/A
<b>Trade Mark:</b>	<b>DELUX</b>
<b>Applicant:</b>	Shenzhen Delux Industry Co., Ltd.
<b>Address:</b>	Delux Industrial Park, Lanzhu Street, New Pingshan District, Shenzhen City 518118, China
<b>Manufacturer:</b>	Wuhu Delux Mobile Internet Device Company Limited
<b>Address:</b>	Delux Industrial Park, Xici 3 Road, Xinwu Development Zone, Wanzhi Town, Wuhu County, Anhui Province, China
<b>Date of Test:</b>	Aug. 07, 2019 – Aug. 08, 2019
<b>Applicable Standards:</b>	FCC CFR Title 47 Part 15 Subpart C Section 15.249 ANSI C63.10:2013

The above equipment has been tested by Shenzhen Tongce Testing Lab. and found compliance with the requirements set forth in the technical standards mentioned above. The results of testing in this report apply only to the product/system, which was tested. Other similar equipment will not necessarily produce the same results due to production tolerance and measurement uncertainties.

Tested By:

Kevin Huang

Kevin Huang

Date:

Aug. 08, 2019

Reviewed By:

Beryl Zhao

Beryl Zhao

Date:

Aug. 09, 2019

Approved By:

Tomsin

Tomsin

Date:

Aug. 09, 2019

## 2. Test Result Summary

Requirement	CFR 47 Section	Result
Antenna Requirement	§15.203	PASS
AC Power Line Conducted Emission	§15.207	PASS
Field Strength of Fundamental	§15.249 (a)	PASS
Spurious Emissions	§15.249 (a) (d)/ §15.209	PASS
Band Edge	§15.249 (d)/ §15.205	PASS
20dB Occupied Bandwidth	§15.215 (c)	PASS

**Note:**

1. Pass: Test item meets the requirement.
2. Fail: Test item does not meet the requirement.
3. N/A: Test case does not apply to the test object.
4. The test result judgment is decided by the limit of test standard.

### 3. EUT Description

<b>Product:</b>	Wired/Wireless Gaming Mouse
<b>Model No.:</b>	M627
<b>Additional Model No.:</b>	N/A
<b>Trade Mark:</b>	<b>DELUX</b>
<b>Operation Frequency:</b>	2402MHz - 2479MHz
<b>Number of Channel:</b>	16
<b>Modulation Technology:</b>	FSK
<b>Antenna Type:</b>	PCB Antenna
<b>Antenna Gain:</b>	-2dBi
<b>Power Supply:</b>	Rechargeable Li-ion Battery DC 3.7V

### Operation Frequency Each of Channel

Channel	Frequency	Channel	Frequency	Channel	Frequency	Channel	Frequency
1	2402MHz	5	2424MHz	9	2444MHz	13	2461MHz
2	2407MHz	6	2429MHz	10	2449MHz	14	2466MHz
3	2414MHz	7	2434MHz	11	2454MHz	15	2473MHz
4	2419MHz	8	2439MHz	12	2459MHz	16	2479MHz

### Note:

In section 15.31(m), regards to the operating frequency range over 10 MHz, the Lowest frequency, the middle frequency, and the highest frequency of channel were selected to perform the test, and the selected channel see below:

Channel	Frequency
The Lowest channel	2402MHz
The Middle channel	2439MHz
The Highest channel	2479MHz

## 4. General Information

### 4.1. Test Environment and Mode

Operating Environment:		
Condition	Conducted Emission	Radiated Emission
Temperature:	25.0 °C	25.0 °C
Humidity:	55 % RH	55 % RH
Atmospheric Pressure:	1010 mbar	1010 mbar
Test Mode:		
Engineering mode:	Keep the EUT in continuous transmitting by select channel and modulations with Fully-charged battery	
The sample was placed 0.8m & 1.5m for the measurement below & above 1GHz above the ground plane of 3m chamber. Measurements in both horizontal and vertical polarities were performed. During the test, each emission was maximized by: having the EUT continuously working, investigated all operating modes, rotated about all 3 axis (X, Y & Z) and considered typical configuration to obtain worst position, manipulating interconnecting cables, rotating the turntable, varying antenna height from 1m to 4m in both horizontal and vertical polarizations. The emissions worst-case( Z axis) are shown in Test Results of the following pages.		

### 4.2. Description of Support Units

The EUT has been tested as an independent unit together with other necessary accessories or support units. The following support units or accessories were used to form a representative test configuration during the tests.

Equipment	Model No.	Serial No.	FCC ID	Trade Name
/	/	/	/	/

**Note:**

1. All the equipment/cables were placed in the worst-case configuration to maximize the emission during the test.
2. Grounding was established in accordance with the manufacturer's requirements and conditions for the intended use.

## 5. Facilities and Accreditations

### 5.1. Facilities

The test facility is recognized, certified, or accredited by the following organizations:

- FCC - Registration No.: 645098

Shenzhen Tongce Testing Lab

The 3m Semi-anechoic chamber has been registered and fully described in a report with the (FCC) Federal Communications Commission. The acceptance letter from the FCC is maintained in our files.

- IC - Registration No.: 10668A-1

The 3m Semi-anechoic chamber of Shenzhen TCT Testing Technology Co., Ltd. has been registered by Certification and Engineering Bureau of Industry Canada for radio equipment testing

### 5.2. Location

Shenzhen Tongce Testing Lab

Address: 1B/F., Building 1, Yibaolai Industrial Park, Qiaotou, Fuyong, Baoan District, Shenzhen, Guangdong, China

TEL: +86-755-27673339

### 5.3. Measurement Uncertainty

The reported uncertainty of measurement  $y \pm U$ , where expanded uncertainty  $U$  is based on a standard uncertainty multiplied by a coverage factor of  $k=2$ , providing a level of confidence of approximately 95 %.

No.	Item	MU
1	Conducted Emission	$\pm 2.56\text{dB}$
2	RF power, conducted	$\pm 0.12\text{dB}$
3	Spurious emissions, conducted	$\pm 0.11\text{dB}$
4	All emissions, radiated(<1GHz)	$\pm 3.92\text{dB}$
5	All emissions, radiated(>1GHz)	$\pm 4.28\text{dB}$
6	Temperature	$\pm 0.1^{\circ}\text{C}$
7	Humidity	$\pm 1.0\%$



## 6. Test Results and Measurement Data

### 6.1. Antenna Requirement

**Standard requirement:**

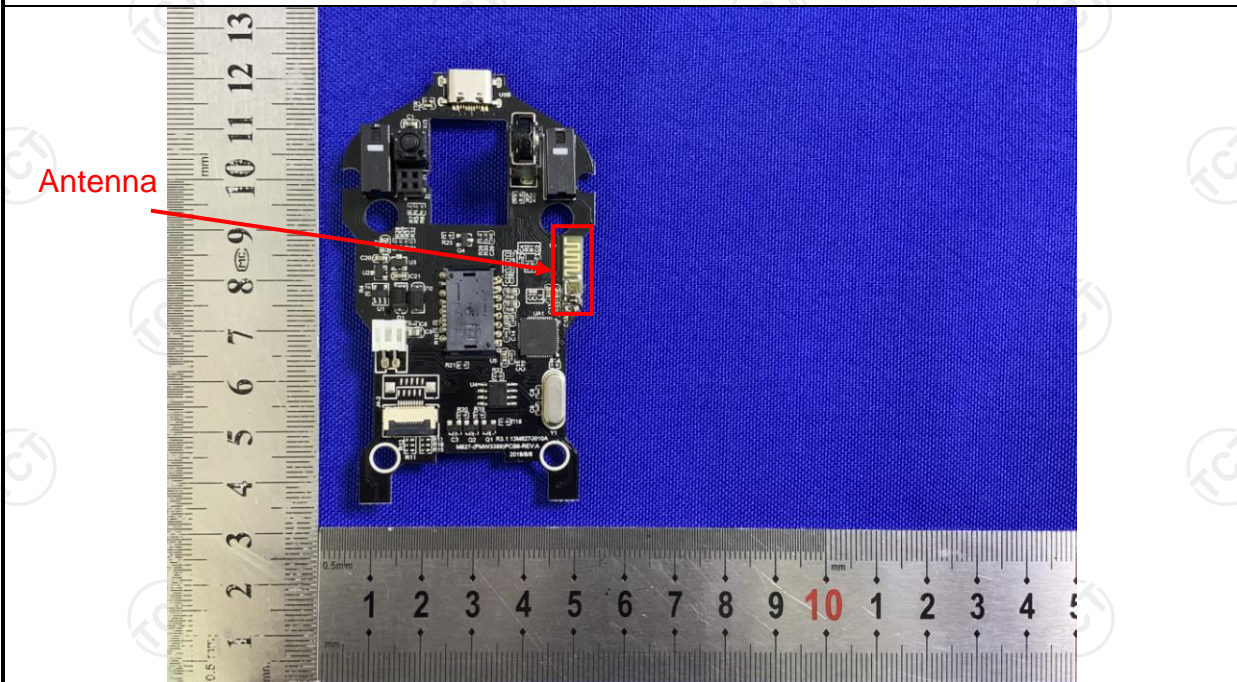
FCC Part15 C Section 15.203

**15.203 requirement:**

An intentional radiator shall be designed to ensure that no antenna other than that furnished by the responsible party shall be used with the device. The use of a permanently attached antenna or of an antenna that uses a unique coupling to the intentional radiator, the manufacturer may design the unit so that a broken antenna can be replaced by the user, but the use of a standard antenna jack or electrical connector is prohibited.

**E.U.T Antenna:**

The EUT antenna is PCB antenna which permanently attached, and the best case gain of the antenna is -2dBi.



## 6.2. Conducted Emission

### 6.2.1. Test Specification

Test Requirement:	FCC Part15 C Section 15.207														
Test Method:	ANSI C63.10:2013														
Frequency Range:	150 kHz to 30 MHz														
Receiver setup:	RBW=9 kHz, VBW=30 kHz, Sweep time=auto														
Limits:	<table><tr><th rowspan="2">Frequency range (MHz)</th><th colspan="2">Limit (dBuV)</th></tr><tr><th>Quasi-peak</th><th>Average</th></tr><tr><td>0.15-0.5</td><td>66 to 56*</td><td>56 to 46*</td></tr><tr><td>0.5-5</td><td>56</td><td>46</td></tr><tr><td>5-30</td><td>60</td><td>50</td></tr></table>	Frequency range (MHz)	Limit (dBuV)		Quasi-peak	Average	0.15-0.5	66 to 56*	56 to 46*	0.5-5	56	46	5-30	60	50
Frequency range (MHz)	Limit (dBuV)														
	Quasi-peak	Average													
0.15-0.5	66 to 56*	56 to 46*													
0.5-5	56	46													
5-30	60	50													
Test Setup:	<div><p>Reference Plane</p><p>Remark: E.U.T: Equipment Under Test LISN: Line Impedance Stabilization Network Test table height=0.8m</p></div>														
Test Mode:	Transmitting mode with modulation														
Test Procedure:	<ol style="list-style-type: none"><li>1. The E.U.T and simulators are connected to the main power through a line impedance stabilization network (L.I.S.N.). This provides a 50ohm/50uH coupling impedance for the measuring equipment.</li><li>2. The peripheral devices are also connected to the main power through a LISN that provides a 50ohm/50uH coupling impedance with 50ohm termination. (Please refer to the block diagram of the test setup and photographs).</li><li>3. Both sides of A.C. line are checked for maximum conducted interference. In order to find the maximum emission, the relative positions of equipment and all of the interface cables must be changed according to ANSI C63.10:2013 on conducted measurement.</li></ol>														
Test Result:	PASS														

## 6.2.2. Test Instruments

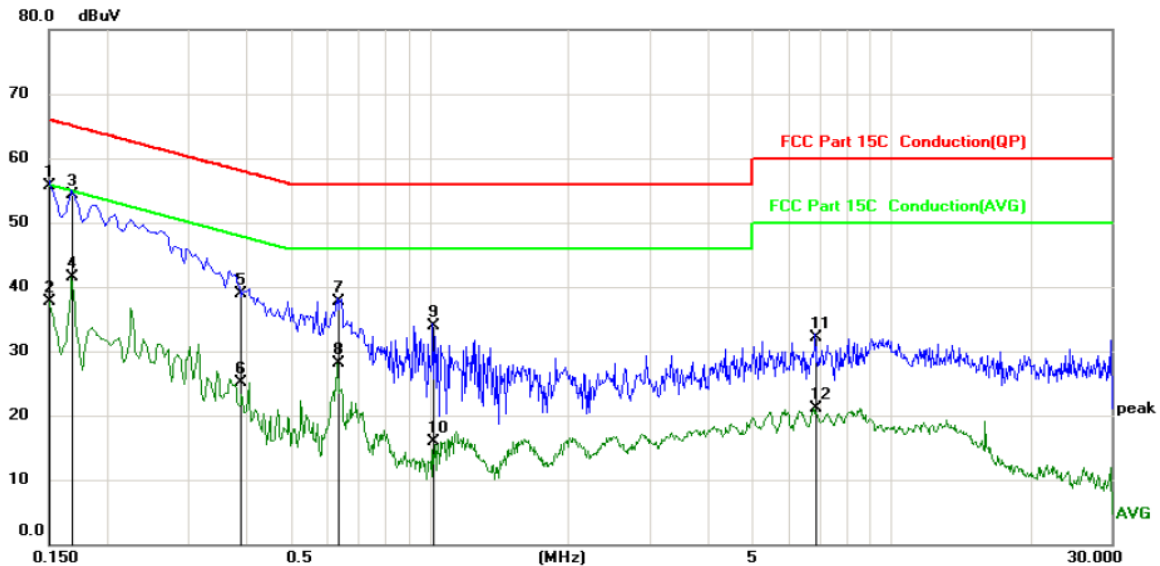
Conducted Emission Shielding Room Test Site (843)				
Equipment	Manufacturer	Model	Serial Number	Calibration Due
Test Receiver	R&S	ESPI	101402	Sep. 17, 2019
LISN	Schwarzbeck	NSLK 8126	8126453	Sep. 20, 2019
Coax cable (9KHz-30MHz)	TCT	CE-05	N/A	Sep. 16, 2019
EMI Test Software	Shurple Technology	EZ-EMC	N/A	N/A

**Note:** The calibration interval of the above test instruments is 12 months and the calibrations are traceable to international system unit (SI).

## 6.2.3. Test data

Please refer to following diagram for individual

### Conducted Emission on Line Terminal of the power line (150 kHz to 30MHz)



Site			Phase: L1			Temperature: 25		
Limit: FCC Part 15C Conduction(QP)			Power:			Humidity: 55 %		
No.	Mk.	Freq.	Reading Level	Correct Factor	Measurement	Limit	Over	
		MHz	dBuV	dB	dBuV	dBuV	dB	Detector Comment
1	*	0.1500	45.51	10.12	55.63	66.00	-10.37	QP
2		0.1500	27.61	10.12	37.73	56.00	-18.27	AVG
3		0.1680	44.23	10.12	54.35	65.06	-10.71	QP
4		0.1680	31.47	10.12	41.59	55.06	-13.47	AVG
5		0.3885	28.79	10.13	38.92	58.10	-19.18	QP
6		0.3885	15.03	10.13	25.16	48.10	-22.94	AVG
7		0.6315	27.56	10.13	37.69	56.00	-18.31	QP
8		0.6315	17.99	10.13	28.12	46.00	-17.88	AVG
9		1.0184	23.69	10.12	33.81	56.00	-22.19	QP
10		1.0184	5.85	10.12	15.97	46.00	-30.03	AVG
11		6.8550	21.94	10.14	32.08	60.00	-27.92	QP
12		6.8550	10.88	10.14	21.02	50.00	-28.98	AVG

#### Note:

Freq. = Emission frequency in MHz

Reading level (dBuV) = Receiver reading

Corr. Factor (dB) = LISN factor + Cable loss

Measurement (dBuV) = Reading level (dBuV) + Corr. Factor (dB)

Limit (dBuV) = Limit stated in standard

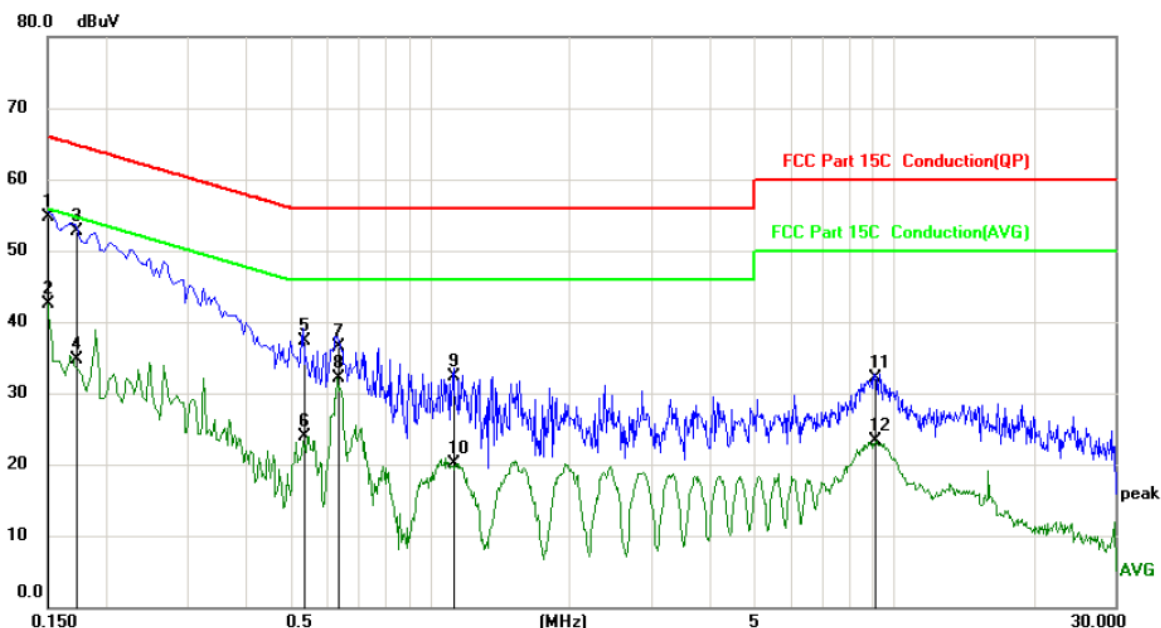
Margin (dB) = Measurement (dBuV) – Limits (dBuV)

Q.P. =Quasi-Peak

AVG =average

\* is meaning the worst frequency has been tested in the frequency range 150 kHz to 30MHz

## Conducted Emission on Neutral Terminal of the power line (150 kHz to 30MHz)



Site: Phase: **N** Temperature: 25  
Limit: FCC Part 15C Conduction(QP) Power: Humidity: 55 %

No.	Mk.	Freq.	Reading Level	Correct Factor	Measurement	Limit	Over		
		MHz	dBuV	dB	dBuV	dBuV	dB	Detector	Comment
1	*	0.1500	44.51	10.12	54.63	66.00	-11.37	QP	
2		0.1500	32.31	10.12	42.43	56.00	-13.57	AVG	
3		0.1725	42.59	10.12	52.71	64.84	-12.13	QP	
4		0.1725	24.63	10.12	34.75	54.84	-20.09	AVG	
5		0.5325	27.13	10.13	37.26	56.00	-18.74	QP	
6		0.5325	13.74	10.13	23.87	46.00	-22.13	AVG	
7		0.6315	26.36	10.13	36.49	56.00	-19.51	QP	
8		0.6315	22.05	10.13	32.18	46.00	-13.82	AVG	
9		1.1265	22.16	10.12	32.28	56.00	-23.72	QP	
10		1.1265	10.01	10.12	20.13	46.00	-25.87	AVG	
11		9.0690	21.94	10.15	32.09	60.00	-27.91	QP	
12		9.0690	13.14	10.15	23.29	50.00	-26.71	AVG	

### Note:

Freq. = Emission frequency in MHz

Reading level (dBuV) = Receiver reading

Corr. Factor (dB) = LISN factor + Cable loss

Measurement (dBuV) = Reading level (dBuV) + Corr. Factor (dB)

Limit (dBuV) = Limit stated in standard

Margin (dB) = Measurement (dBuV) – Limits (dBuV)

Q.P. =Quasi-Peak

AVG =average

\* is meaning the worst frequency has been tested in the frequency range 150 kHz to 30MHz.

## 6.3. Radiated Emission Measurement

### 6.3.1. Test Specification

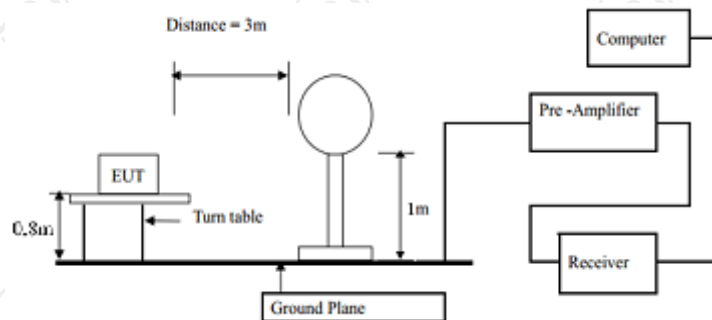
Test Requirement:	FCC Part15 C Section 15.209				
Test Method:	ANSI C63.10:2013				
Frequency Range:	9 kHz to 25 GHz				
Measurement Distance:	3 m				
Antenna Polarization:	Horizontal & Vertical				
Receiver Setup:	Frequency	Detector	RBW	VBW	Remark
	9kHz- 150kHz	Quasi-peak	200Hz	1kHz	Quasi-peak Value
	150kHz- 30MHz	Quasi-peak	9kHz	30kHz	Quasi-peak Value
	30MHz-1GHz	Quasi-peak	120kHz	300kHz	Quasi-peak Value
	Above 1GHz	Peak	1MHz	3MHz	Peak Value
Limit(Field strength of the fundamental signal):	Frequency		Limit (dBuV/m @3m)		Remark
	2400MHz-2483.5MHz		94.00		Average Value
			114.00		Peak Value
Limit(Spurious Emissions):	Frequency		Limit (dBuV/m @3m)		Remark
	0.009-0.490		2400/F(KHz)		Quasi-peak Value
	0.490-1.705		24000/F(KHz)		Quasi-peak Value
	1.705-30		30		Quasi-peak Value
	30MHz-88MHz		40.0		Quasi-peak Value
	88MHz-216MHz		43.5		Quasi-peak Value
	216MHz-960MHz		46.0		Quasi-peak Value
	960MHz-1GHz		54.0		Quasi-peak Value
	Above 1GHz		54.0		Average Value
Limit (band edge) :			74.0		Peak Value
	Emissions radiated outside of the specified frequency bands, except for harmonics, shall be attenuated by at least 50 dB below the level of the fundamental or to the general radiated emission limits in Section 15.209, whichever is the lesser attenuation.				
Test Procedure:	<div>1. The EUT was placed on the top of a rotating table 0.8 meters above the ground at a 3 meter chamber in below 1GHz, 1.5m above the ground in above 1GHz. The table was rotated 360 degrees to determine the position of the highest radiation.</div> <div>2. The EUT was set 3 meters away from the interference-receiving antenna, which was mounted on the top of a variable-height antenna tower.</div> <div>3. The antenna height is varied from one meter to four meters above the ground to determine the maximum value of the field strength. Both horizontal and vertical polarizations of the antenna are set to make the measurement.</div>				



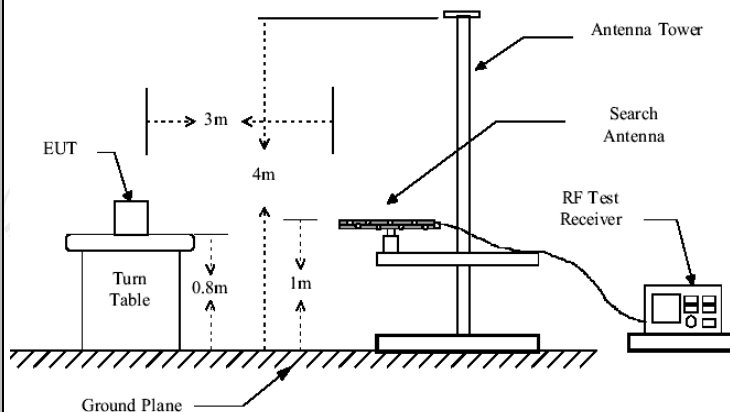
4. For each suspected emission, the EUT was arranged to its worst case and then the antenna was tuned to heights from 1 meter to 4 meters and the rotatable table was turned from 0 degrees to 360 degrees to find the maximum reading.
5. The test-receiver system was set to Peak Detect Function and Specified Bandwidth with Maximum Hold Mode.
6. If the emission level of the EUT in peak mode was 10dB lower than the limit specified, then testing could be stopped and the peak values of the EUT would be reported. Otherwise the emissions that did not have 10dB margin would be re-tested one by one using peak, quasi-peak or average method as specified and then reported in a data sheet.

**Test setup:**

For radiated emissions below 30MHz

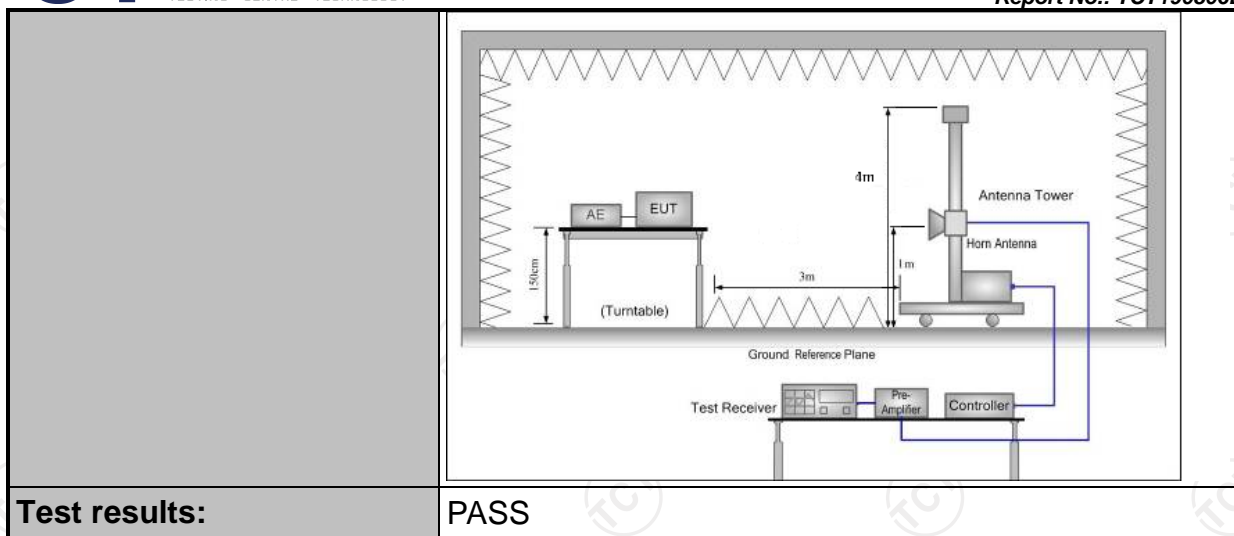


30MHz to 1GHz



Above 1GHz

(The diagram below shows the test setup that is utilized to make the measurements for emission from 1GHz to the tenth harmonic of the highest fundamental frequency or to 40GHz emissions, whichever is lower.)





### 6.3.2. Test Instruments

Radiated Emission Test Site (966)				
Name of Equipment	Manufacturer	Model	Serial Number	Calibration Due
Test Receiver	ROHDE&SCHW ARZ	ESIB7	100197	Sep. 17, 2019
Spectrum Analyzer	ROHDE&SCHW ARZ	FSQ40	200061	Sep. 20, 2019
Pre-amplifier	EM Electronics Corporation CO.,LTD	EM30265	07032613	Sep. 16, 2019
Pre-amplifier	HP	8447D	2727A05017	Sep. 16, 2019
Loop antenna	ZHINAN	ZN30900A	12024	Oct. 20, 2019
Broadband Antenna	Schwarzbeck	VULB9163	340	Sep. 02, 2019
Horn Antenna	Schwarzbeck	BBHA 9120D	631	Oct. 20, 2019
Horn Antenna	A-INFO	LB-180400-KF	J211020657	Sep. 16, 2019
Antenna Mast	Keleto	RE-AM	N/A	N/A
Coax cable (9KHz-1GHz)	TCT	RE-low-01	N/A	Sep. 16, 2019
Coax cable (9KHz-40GHz)	TCT	RE-high-02	N/A	Sep. 16, 2019
Coax cable (9KHz-1GHz)	TCT	RE-low-03	N/A	Sep. 16, 2019
Coax cable (9KHz-40GHz)	TCT	RE-high-04	N/A	Sep. 16, 2019
EMI Test Software	Shurple Technology	EZ-EMC	N/A	N/A

**Note:** The calibration interval of the above test instruments is 12 months and the calibrations are traceable to international system unit (SI).

### 6.3.3. Test Data

#### Field Strength of Fundamental

Frequency (MHz)	Emission PK (dBuV/m)	Horizontal /Vertical	Limits PK (dBuV/m)	Margin (dB)
2402	88.65	H	114	-25.35
2402	88.19	V	114	-25.81
2439	87.04	H	114	-26.96
2439	86.23	V	114	-27.77
2479	85.87	H	114	-28.13
2479	87.76	V	114	-26.24

Frequency (MHz)	Emission AV (dBuV/m)	Horizontal /Vertical	Limits AV (dBuV/m)	Margin (dB)
2402	75.61	H	94	-18.39
2402	76.78	V	94	-17.22
2439	74.34	H	94	-19.66
2439	76.50	V	94	-17.50
2479	71.98	H	94	-22.02
2479	75.02	V	94	-18.98

#### Spurious Emissions

##### Frequency Range (9 kHz-30MHz)

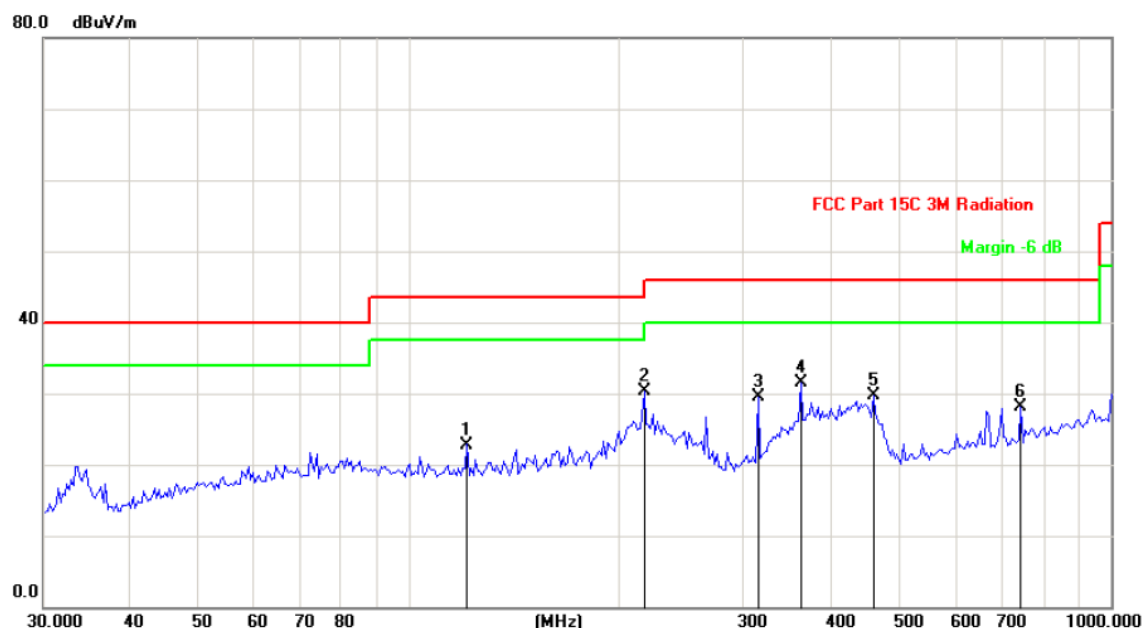
Frequency (MHz)	Level@3m (dBμV/m)	Limit@3m (dBμV/m)
--	--	--
--	--	--
--	--	--
--	--	--

**Note:** 1. Emission Level=Reading+ Cable loss-Antenna factor-Amp factor

2. The emission levels are 20 dB below the limit value, which are not reported. It is deemed to comply with the requirement

## Frequency Range (30MHz-1GHz)

Horizontal:



Site

Polarization: **Horizontal**

Temperature: 25

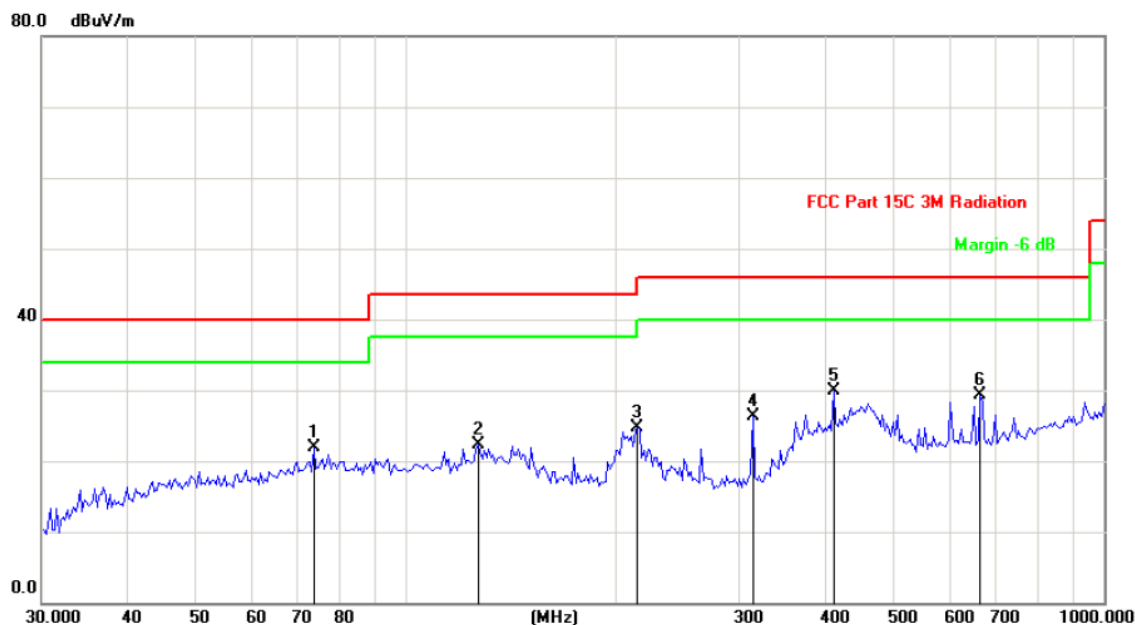
Limit: FCC Part 15C 3M Radiation

Power: DC 3.7V

Humidity: 55 %

No.	Mk.	Freq. MHz	Reading Level dBuV	Correct Factor dB	Measure- ment dBuV/m	Limit dB/m	Over dB	Detector
1		120.6118	34.58	-11.78	22.80	43.50	-20.70	peak
2		216.1197	43.89	-13.55	30.34	46.00	-15.66	peak
3		313.6482	40.06	-10.58	29.48	46.00	-16.52	peak
4	*	360.9775	41.04	-9.53	31.51	46.00	-14.49	peak
5		458.3987	37.81	-8.17	29.64	46.00	-16.36	peak
6		744.4265	32.63	-4.58	28.05	46.00	-17.95	peak

Vertical:



Site: Polarization: **Vertical** Temperature: 25  
 Limit: FCC Part 15C 3M Radiation Power: DC 3.7V Humidity: 55 %

No.	Mk.	Freq. MHz	Reading Level dBuV	Correct Factor dB	Measure- ment dBuV/m	Limit dB/m	Over dB	Detector
1		73.7496	37.99	-16.04	21.95	40.00	-18.05	peak
2		126.6931	36.35	-14.14	22.21	43.50	-21.29	peak
3		214.6063	38.35	-13.59	24.76	43.50	-18.74	peak
4		313.6482	36.83	-10.58	26.25	46.00	-19.75	peak
5	*	409.6506	38.69	-8.83	29.86	46.00	-16.14	peak
6		665.2610	34.89	-5.55	29.34	46.00	-16.66	peak

**Note:** 1. Measurements were conducted in all channels (high, middle, low), and the worst case (low channel) was submitted only.  
 2. Any value more than 10dB below limit have not been specifically reported.

## Above 1GHz

Low channel: 2402MHz									
Frequency (MHz)	Ant. Pol. H/V	Peak reading (dBμV)	AV reading (dBμV)	Correction Factor (dB/m)	Emission Level		Peak limit (dBμV/m)	AV limit (dBμV/m)	Margin (dB)
					Peak (dBμV/m)	AV (dBμV/m)			
4804.00	H	51.17	---	-3.94	47.23	---	74	54	-6.77
7206.00	H	48.65	---	0.52	49.17	---	74	54	-4.83
---	---	---	---	---	---	---	---	---	---
4804.00	V	49.48	---	-3.94	45.54	---	74	54	-8.46
7206.00	V	46.92	---	0.52	47.44	---	74	54	-6.56
---	---	---	---	---	---	---	---	---	---

Middle channel: 2439MHz									
Frequency (MHz)	Ant. Pol. H/V	Peak reading (dBμV)	AV reading (dBμV)	Correction Factor (dB/m)	Emission Level		Peak limit (dBμV/m)	AV limit (dBμV/m)	Margin (dB)
					Peak (dBμV/m)	AV (dBμV/m)			
4878.00	H	50.38	---	-3.98	46.40	---	74	54	-7.60
7317.00	H	49.02	---	0.57	49.59	---	74	54	-4.41
---	---	---	---	---	---	---	---	---	---
4878.00	V	52.14	---	-3.98	48.16	---	74	54	-5.84
7317.00	V	47.25	---	0.57	47.82	---	74	54	-6.18
---	---	---	---	---	---	---	---	---	---

High channel: 2479MHz									
Frequency (MHz)	Ant. Pol. H/V	Peak reading (dBμV)	AV reading (dBμV)	Correction Factor (dB/m)	Emission Level		Peak limit (dBμV/m)	AV limit (dBμV/m)	Margin (dB)
					Peak (dBμV/m)	AV (dBμV/m)			
4958.00	H	52.07	---	-3.98	48.09	---	74	54	-5.91
7437.00	H	49.56	---	0.57	50.13	---	74	54	-3.87
---	---	---	---	---	---	---	---	---	---
4958.00	V	50.74	---	-3.98	46.76	---	74	54	-7.24
7437.00	V	48.85	---	0.57	49.42	---	74	54	-4.58
---	---	---	---	---	---	---	---	---	---

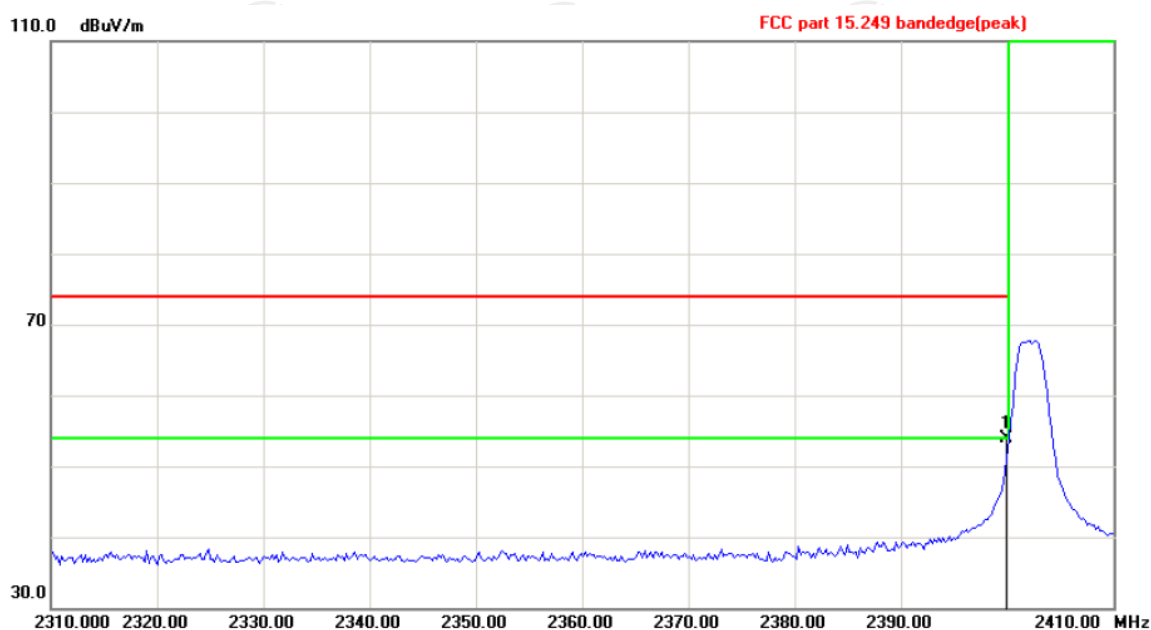
### Note:

1. Emission Level=Peak Reading + Correction Factor; Correction Factor= Antenna Factor + Cable loss – Pre-amplifier
2. Margin (dB) = Emission Level (Peak) (dBμV/m)-Average limit (dBμV/m)
3. The emission levels of other frequencies are very lower than the limit and not show in test report.
4. Measurements were conducted from 1 GHz to the 10th harmonic of highest fundamental frequency.
5. Data of measurement shown “---”in the above table mean that the reading of emissions is attenuated more than 20 dB below the limits or the field strength is too small to be measured.
6. All the restriction bands are compliance with the limit of 15.209.

## Band Edge Requirement

Lowest channel 2402:

Horizontal:



Site

Polarization: **Horizontal**

Temperature: 25

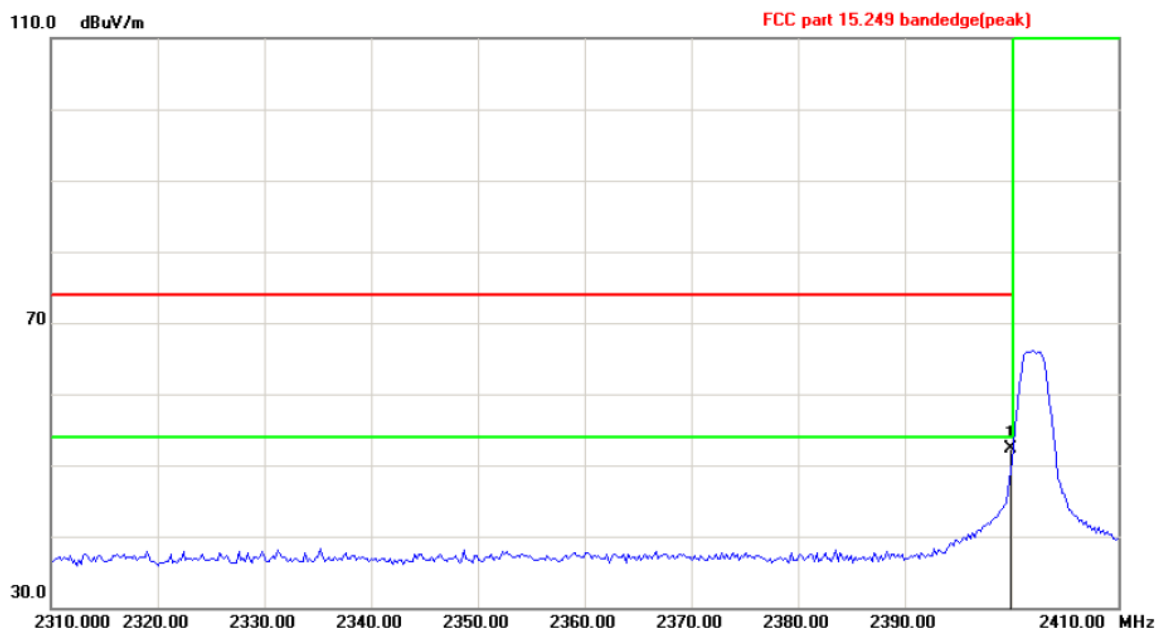
Limit: FCC part 15.249 bandedge(peak)

Power: DC 3.7V

Humidity: 55 %

No.	Mk.	Freq.	Reading Level	Correct Factor	Measurement	Limit	Over	
		MHz	dBuV	dB	dBuV/m	dB/m	dB	Detector
1	*	2400.000	66.92	-13.02	53.90	74.00	-20.10	peak

Vertical:

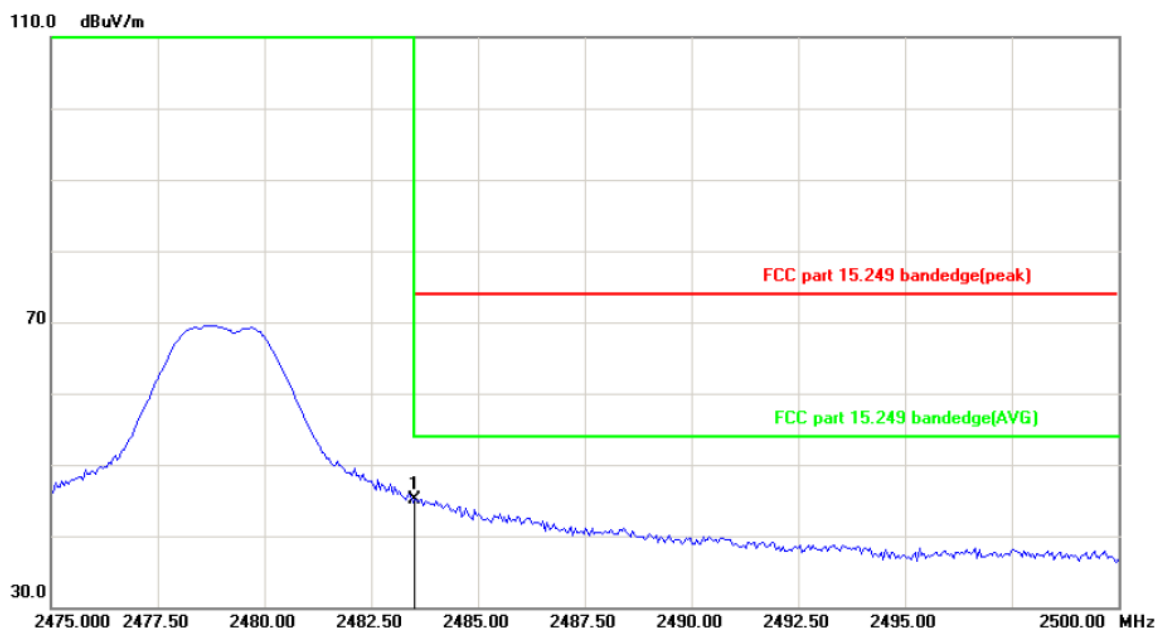


Site	Polarization: <b>Vertical</b>	Temperature: 25
Limit: FCC part 15.249 bandedge(peak)	Power: DC 3.7V	Humidity: 55 %

No.	Mk.	Freq.	Reading Level	Correct Factor	Measurement	Limit	Over	Detector
		MHz	dBuV	dB	dBuV/m	dB/m	dB	
1	*	2400.000	65.28	-13.02	52.26	74.00	-21.74	peak

Highest channel 2479:

Horizontal:

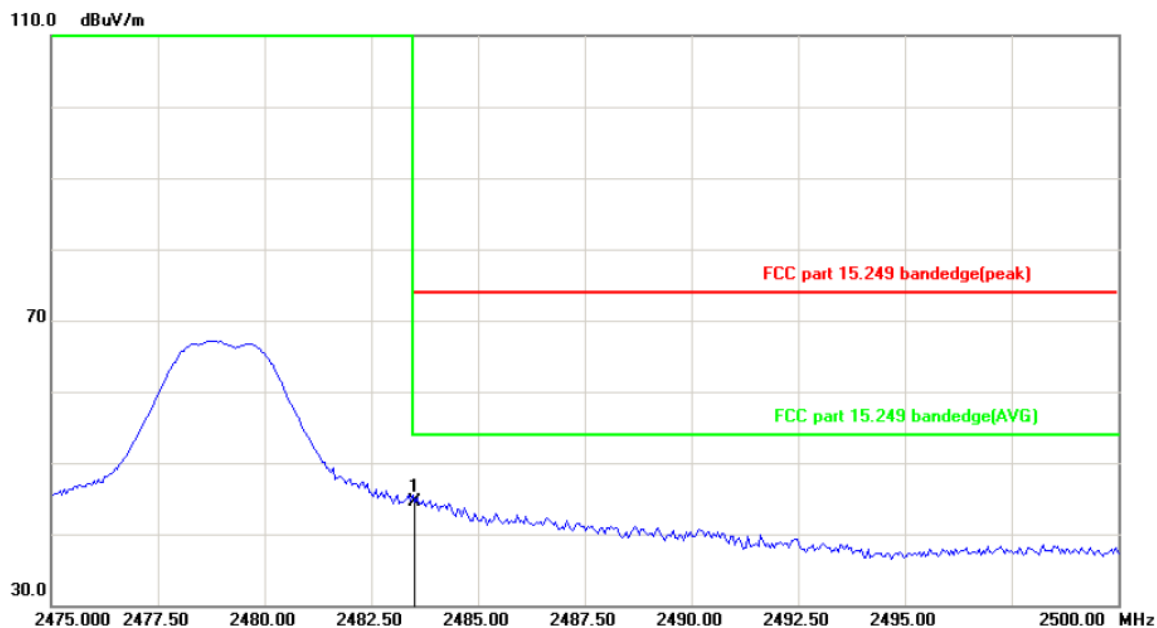


Site: Polarization: **Horizontal** Temperature: 25  
 Limit: FCC part 15.249 bandedge(peak) Power: DC 3.7V Humidity: 55 %

No.	Mk.	Freq. MHz	Reading Level dBuV	Correct Factor dB	Measure- ment dBuV/m	Limit dB/m	Over dB	Detector
1	*	2483.500	57.87	-12.84	45.03	74.00	-28.97	peak



Vertical:




Site: Polarization: **Vertical** Temperature: 25  
 Limit: FCC part 15.249 bandedge(peak) Power: DC 3.7V Humidity: 55 %

No.	Mk.	Freq.	Reading Level	Correct Factor	Measurement	Limit	Over	Detector
		MHz	dBuV	dB	dBuV/m	dB/m	dB	
1	*	2483.500	57.27	-12.84	44.43	74.00	-29.57	peak

**Note:** Measurements were conducted in all channels (high, middle, low), and the worst case (low channel) was submitted only.

## 6.4. 20dB Occupied Bandwidth

### 6.4.1. Test Specification

<b>Test Requirement:</b>	FCC Part15 C Section 15.215(c)
<b>Test Method:</b>	ANSI C63.10: 2013
<b>Limit:</b>	N/A
	<ol style="list-style-type: none"> <li>1. According to the follow Test-setup, keep the relative position between the artificial antenna and the EUT.</li> <li>2. Set to the maximum power setting and enable the EUT transmit continuously.</li> <li>3. Use the following spectrum analyzer settings for 20dB Bandwidth measurement. Span = approximately 2 to 3 times the 20 dB bandwidth, centered on a hopping channel; RBW<math>\geq</math>1% of the 20 dB bandwidth; VBW<math>\geq</math>RBW; Sweep = auto; Detector function = peak; Trace = max hold.</li> <li>4. Measure and record the results in the test report.</li> </ol>
<b>Test setup:</b>	 <p>The diagram illustrates the test setup. On the left is a green Spectrum Analyzer with a screen and two knobs. A cable connects it to a yellow rectangular box on the right labeled 'EUT'.</p>
<b>Test Mode:</b>	Transmitting mode with modulation
<b>Test results:</b>	PASS

### 6.4.2. Test Instruments

RF Test Room				
Equipment	Manufacturer	Model	Serial Number	Calibration Due
Spectrum Analyzer	R&S	FSU	200054	Sep. 20, 2019

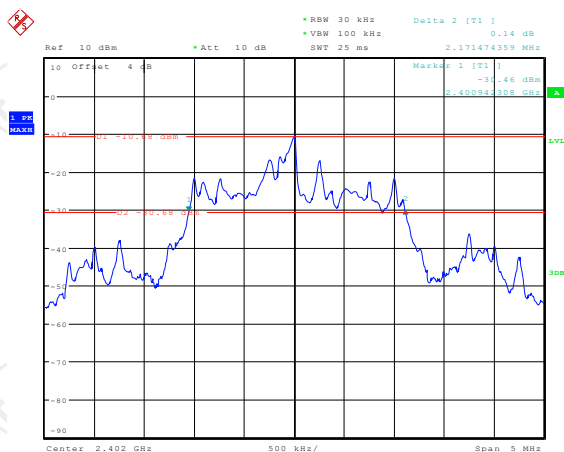
**Note:** The calibration interval of the above test instruments is 12 months and the calibrations are traceable to international system unit (SI).

### 6.4.3. Test data

Test Channel	20dB Occupy Bandwidth (kHz)	Limit	Conclusion
Lowest	2171.47	---	PASS
Middle	2171.47	---	PASS
Highest	2171.47	---	PASS

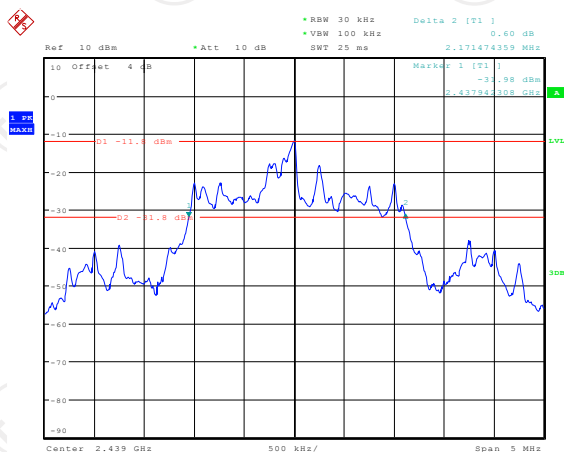
Test plots as follows:

## Lowest channel



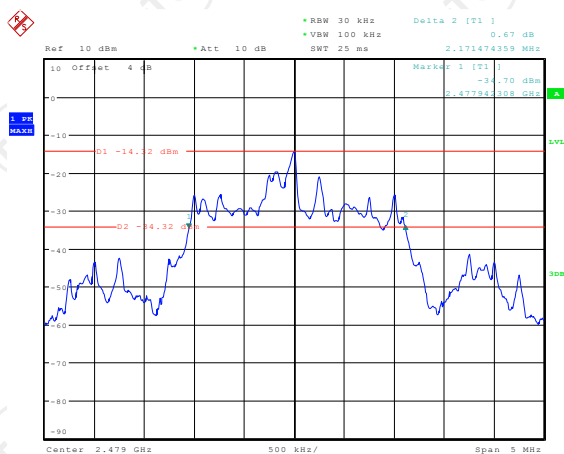
Date: 8.AUG.2019 09:50:06

## Middle channel



Date: 8.AUG.2019 09:51:10

## Highest channel



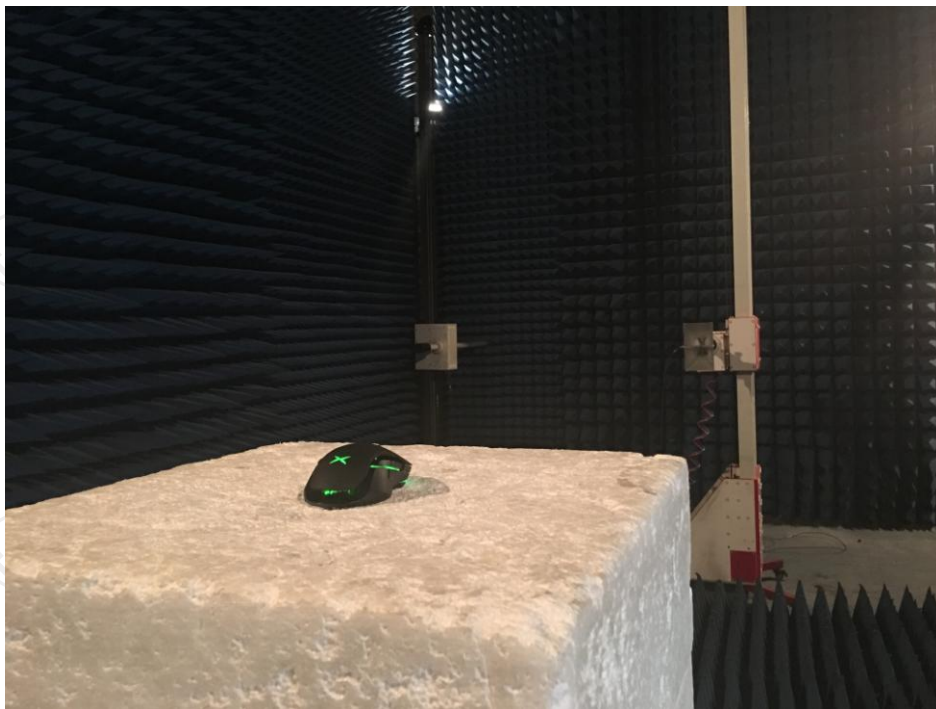
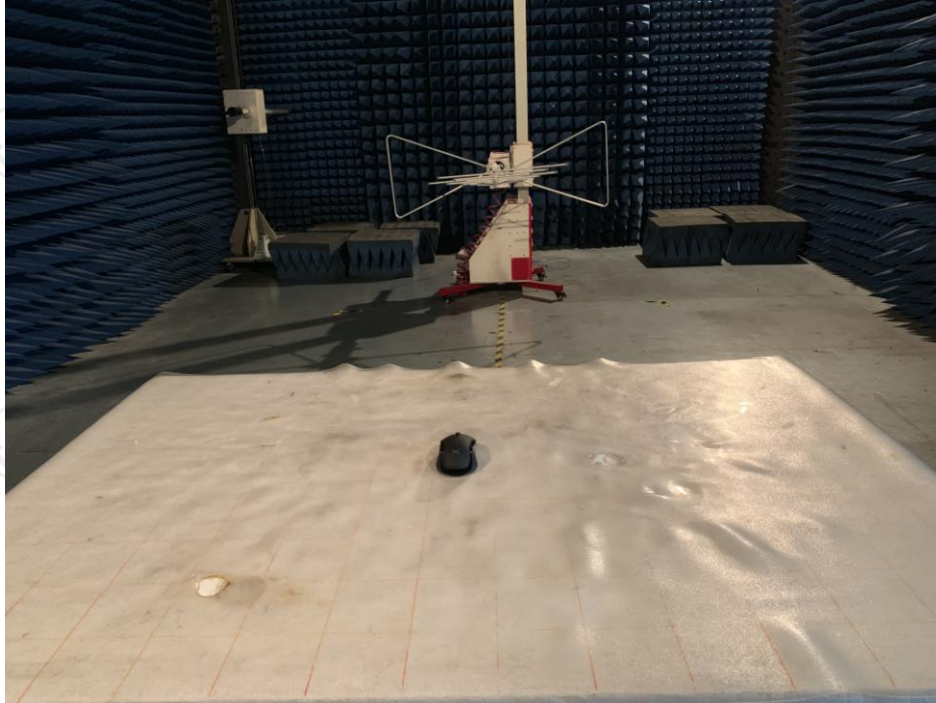
Date: 8.AUG.2019 09:51:54

## Appendix A: Photographs of Test Setup

Product: Wired/Wireless Gaming Mouse

Model: M627

Radiated Emission



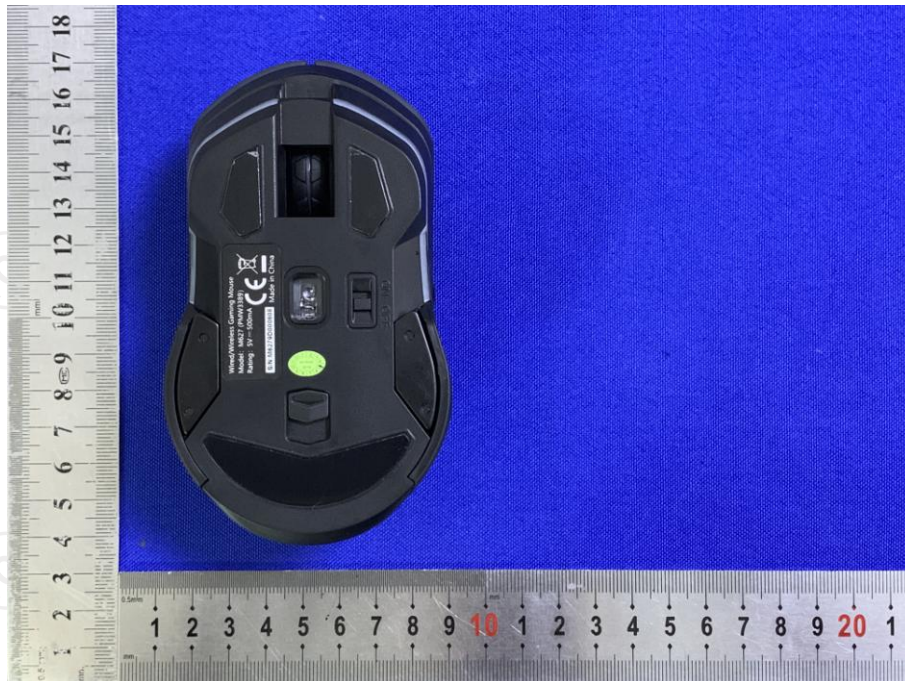
### Conducted Emission



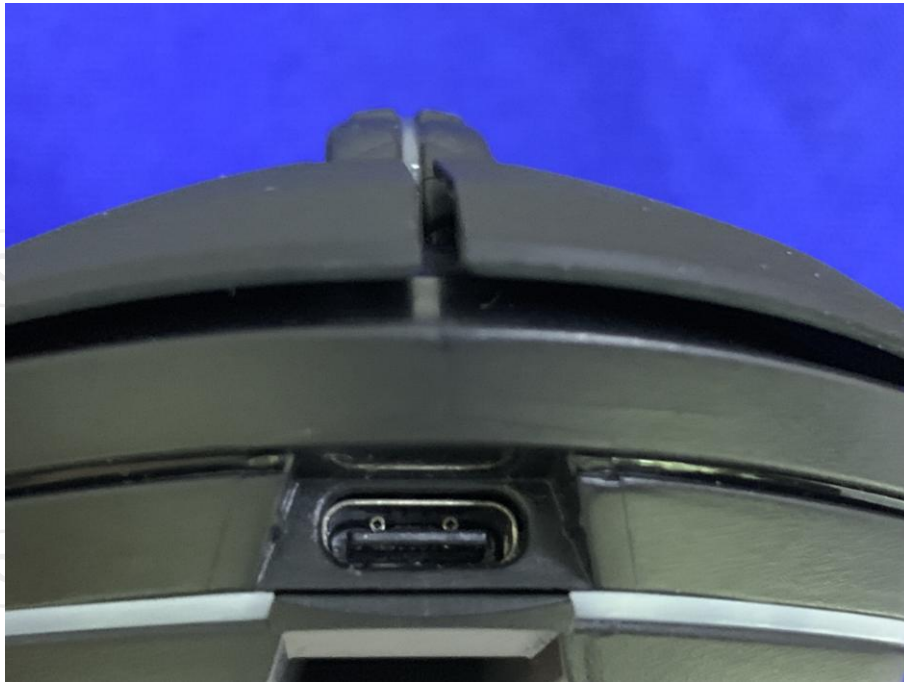


**Appendix B: Photographs of EUT**  
**Product: Wired/Wireless Gaming Mouse**  
**Model: M627**  
**External Photos**







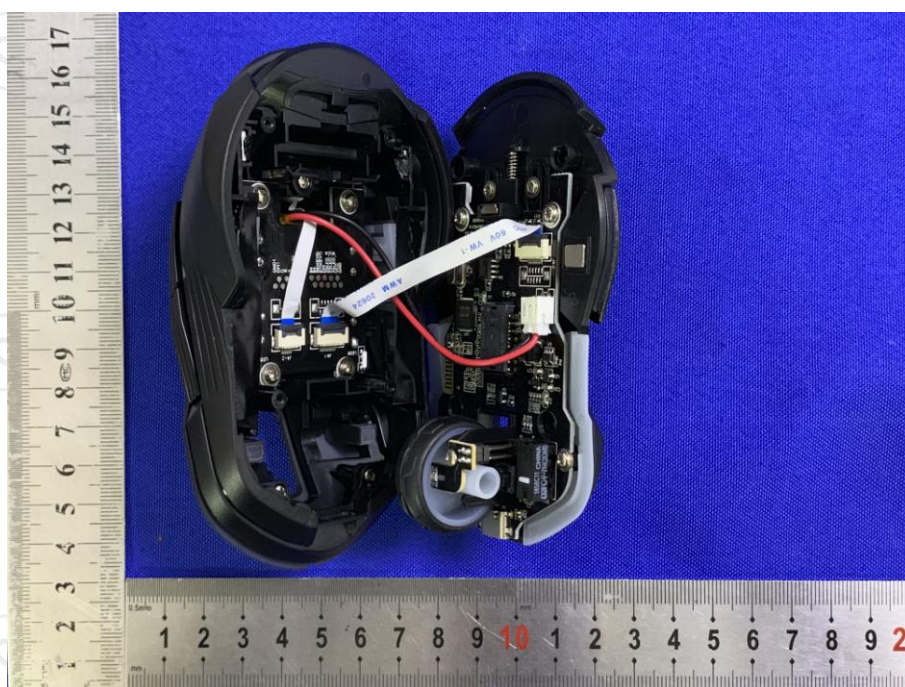


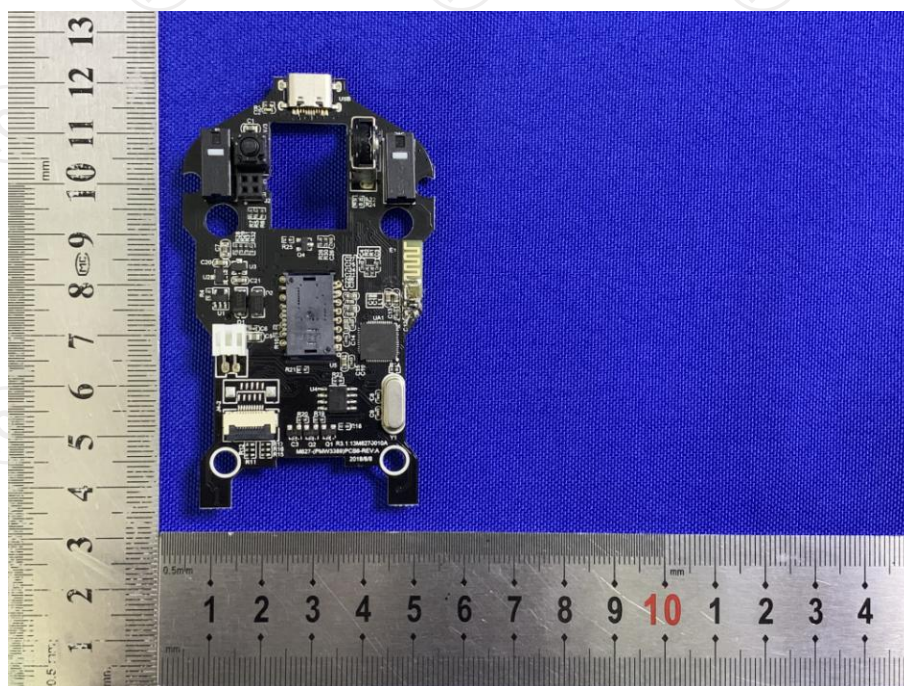
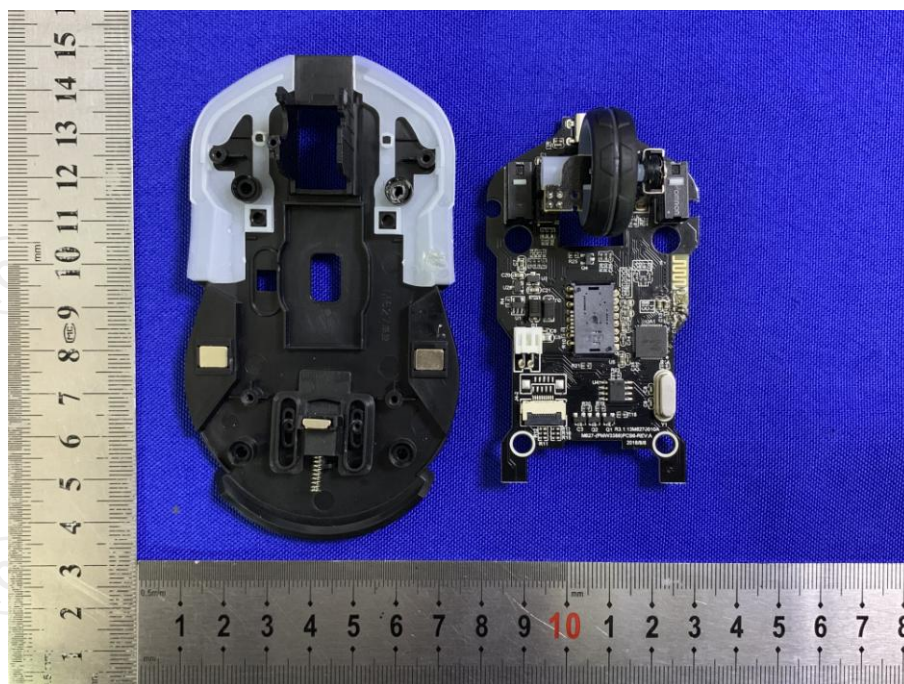




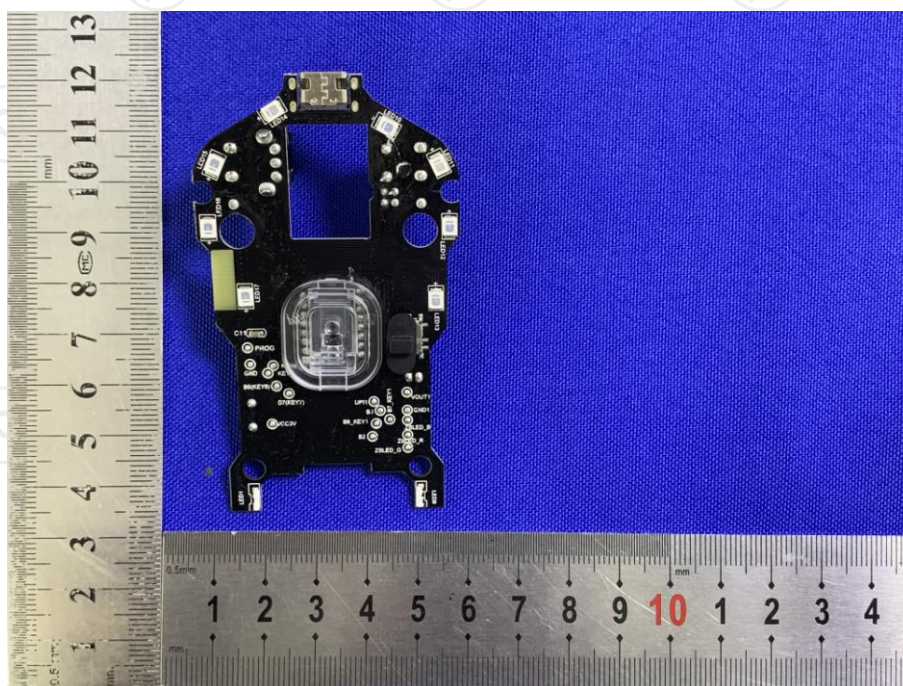
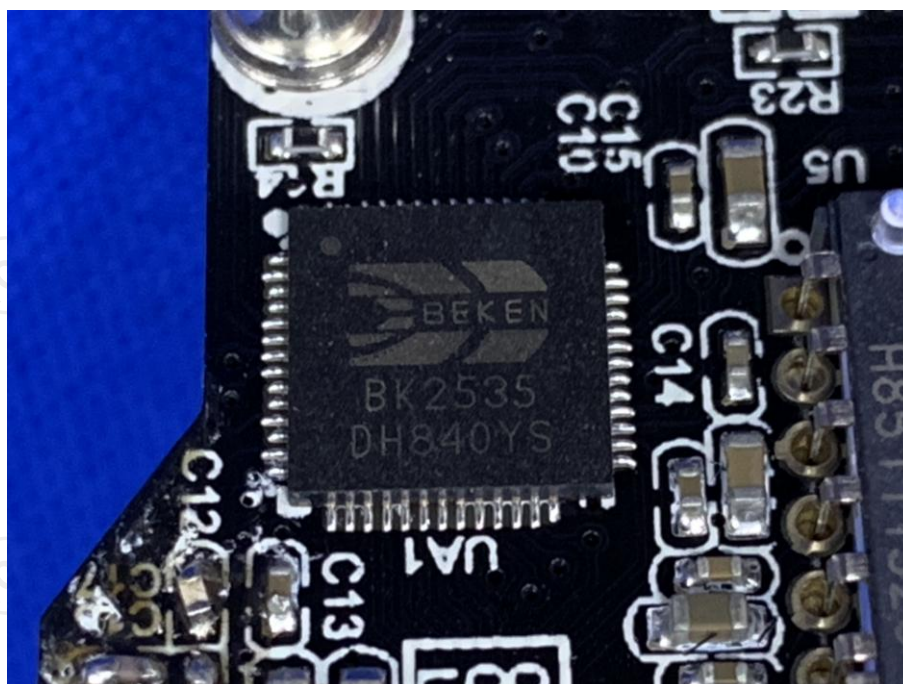


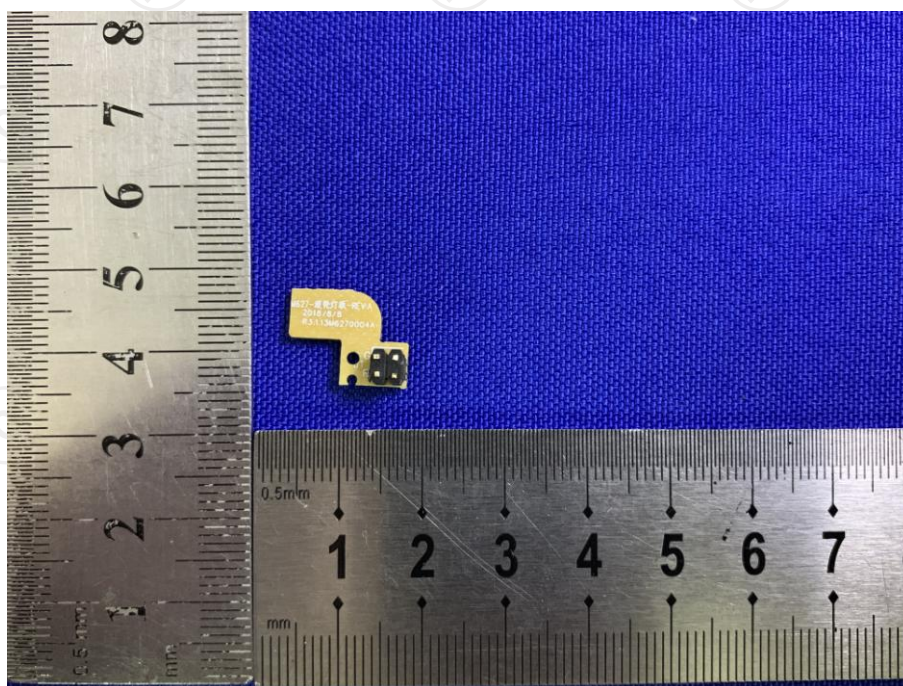
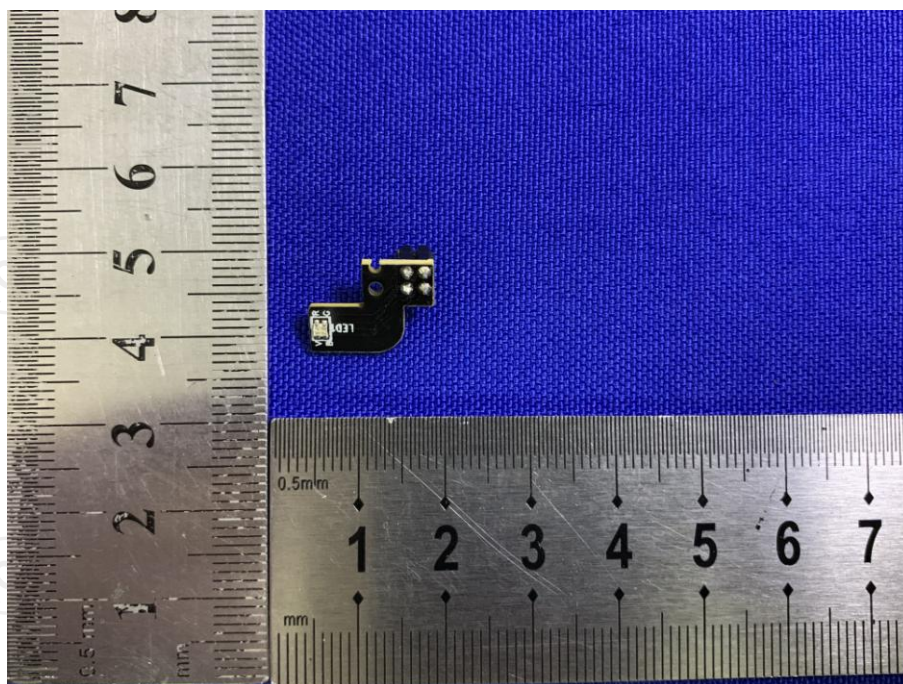
**Product: Wired/Wireless Gaming Mouse**  
**Model: M627**  
**Internal Photos**



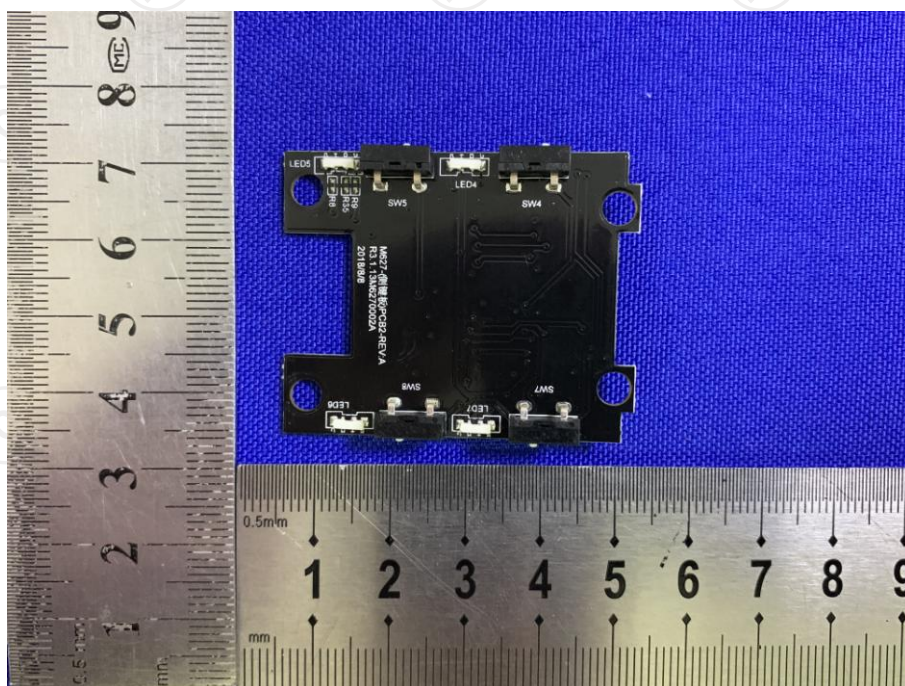
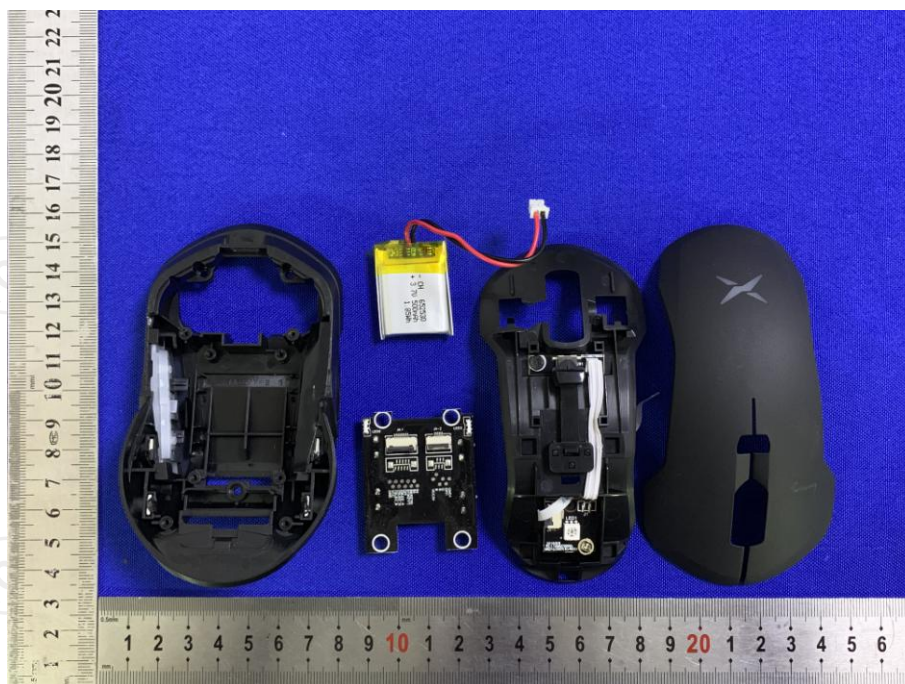




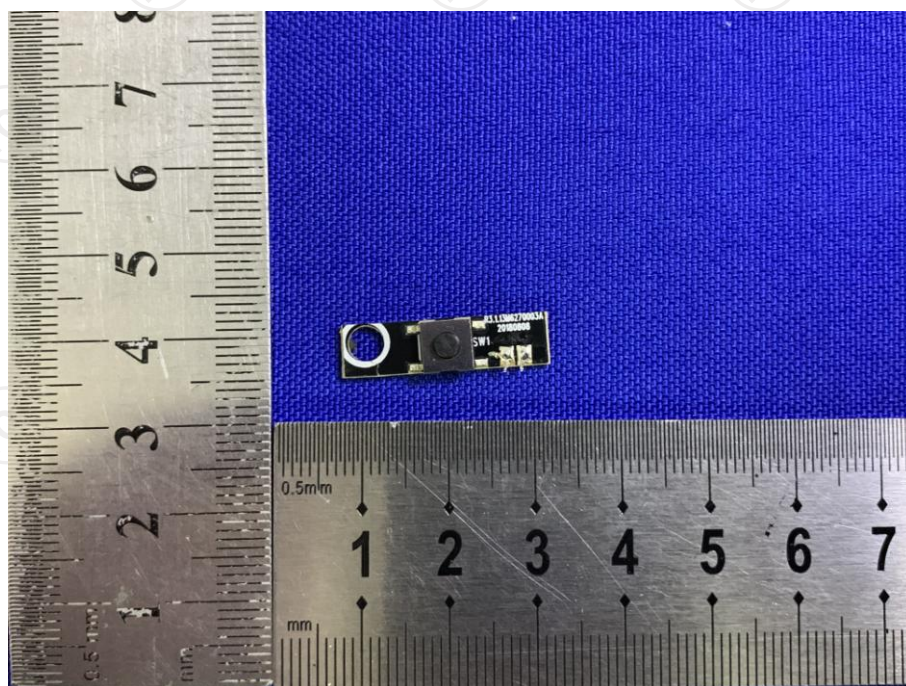
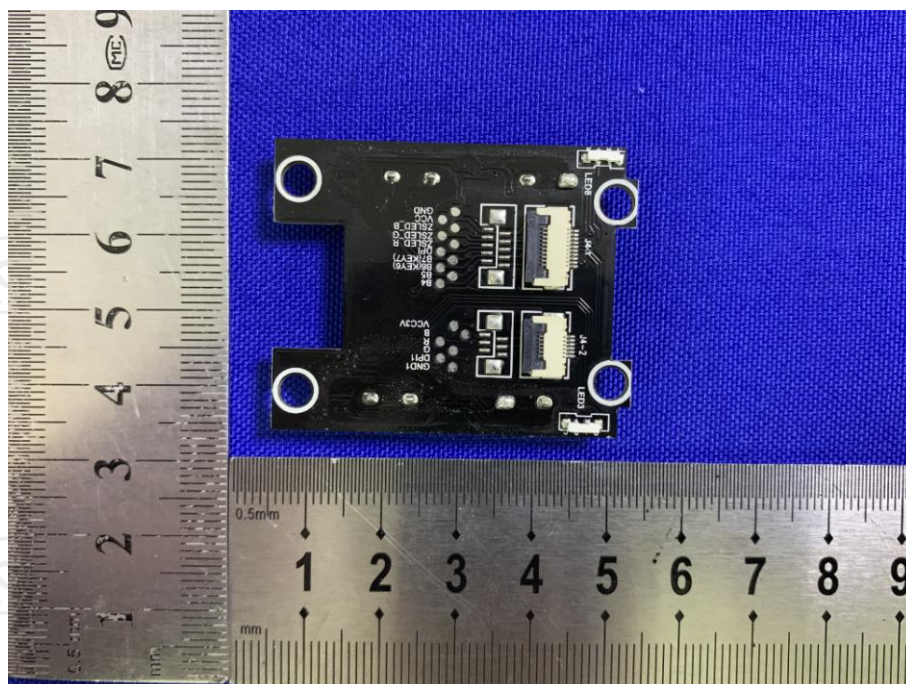


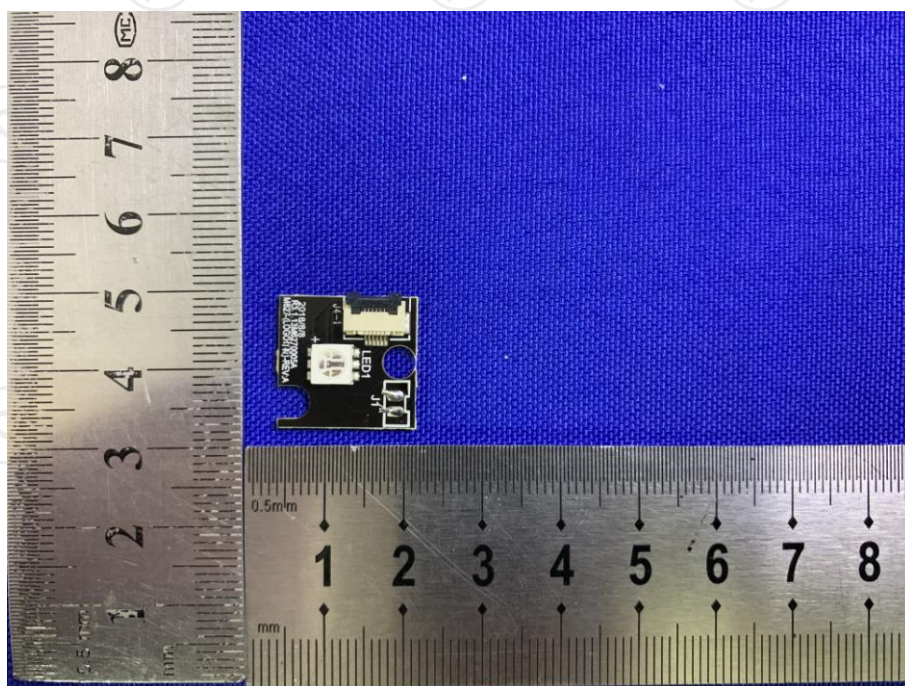
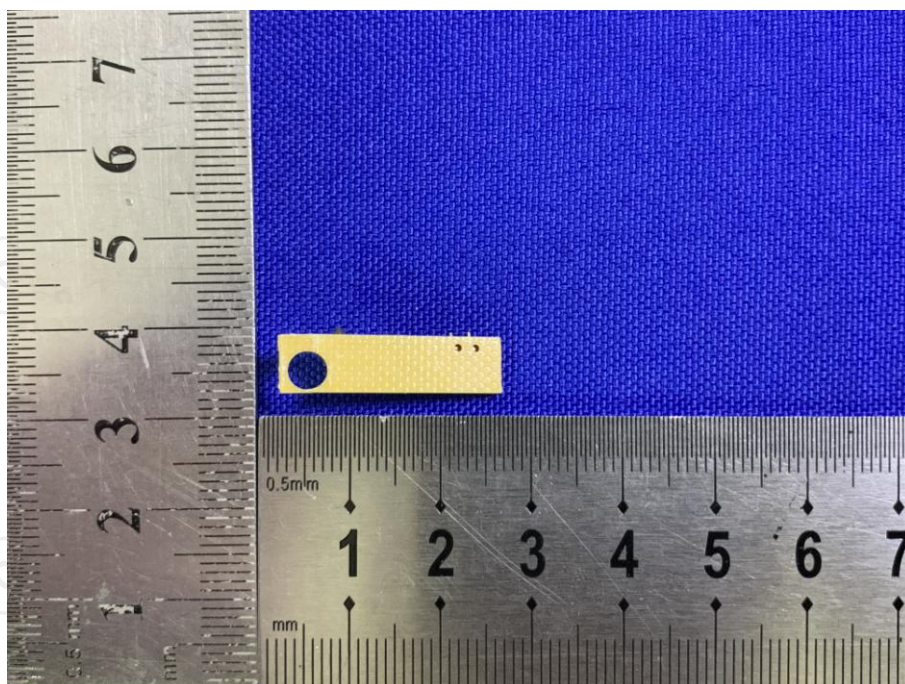




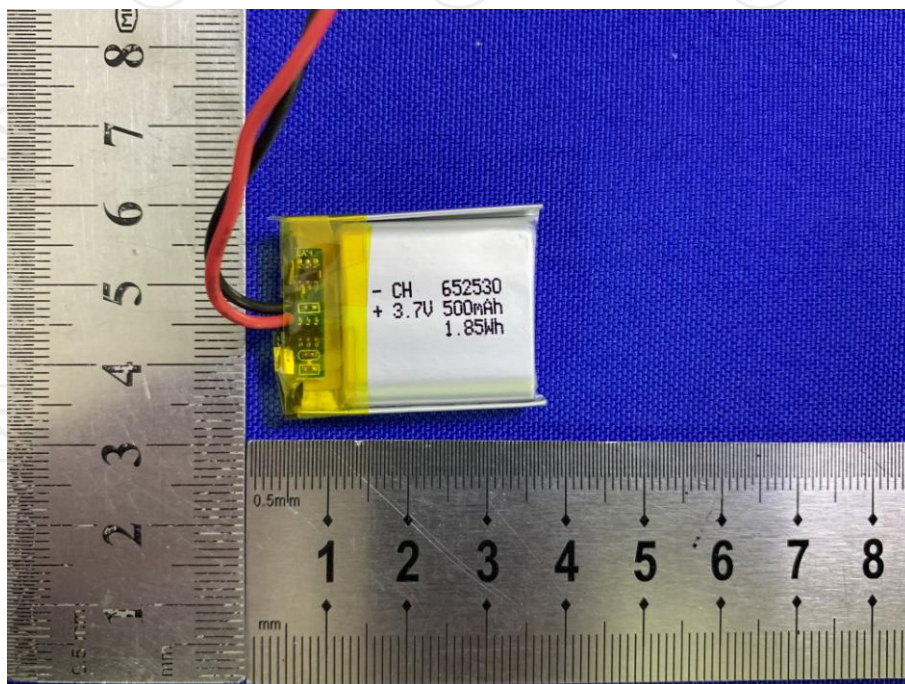
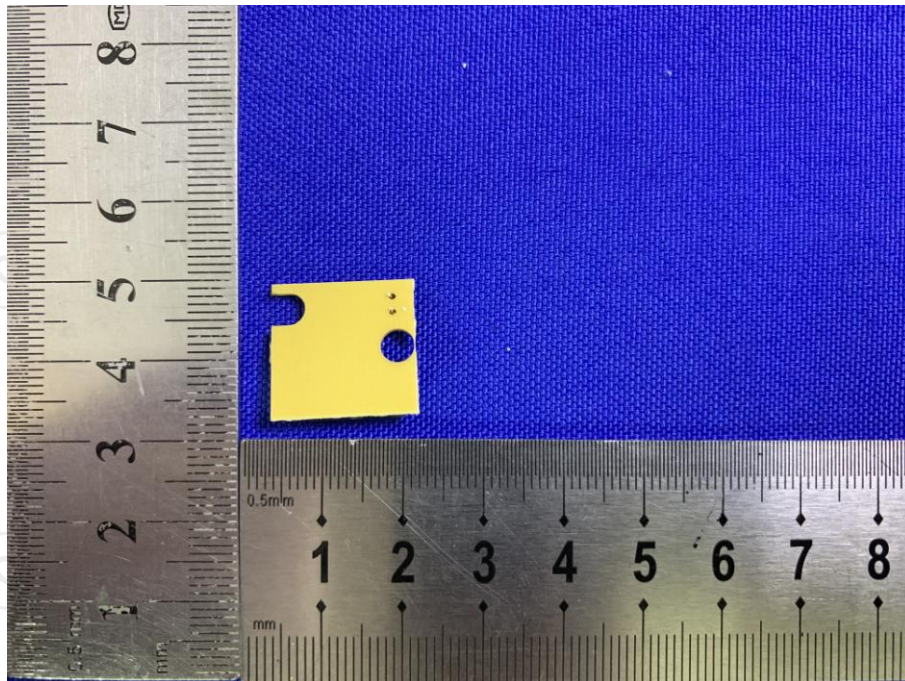


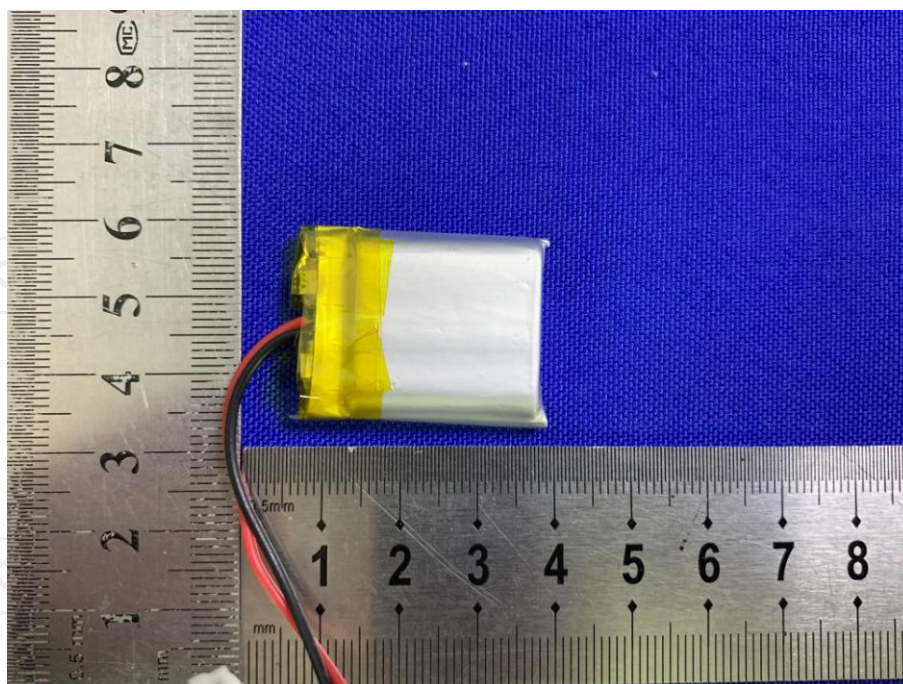












**\*\*\*\*\*END OF REPORT\*\*\*\*\***