

**ELECTROMAGNETIC EMISSIONS COMPLIANCE REPORT  
INTENTIONAL RADIATOR CERTIFICATION TO  
FCC PART 15 SUBPART C REQUIREMENT**

*OF*

**WIRELESS FM TRANSMITTER**

**MODEL No.: 5026**

**BRAND NAME: SONIC IMPACT**

**FCC ID: SGA0923**

**REPORT NO: SZE0408029**

**ISSUE DATE: AUGUST 26, 2004**

*Prepared for*

**SHENZHEN LANGUANG I&E CO., LTD  
8/F LALNGUANG BLDG, ZHENHUA RD, SHENZHEN 518031 CHINA**

*Prepared by*

**COMPLIANCE CERTIFICATION SERVICES (SHENZHEN) INC.**

*d.b.a.*

**COMPLIANCE CERTIFICATION SERVICES (SHENZHEN) INC.  
NO. 6, JINAO INDUSTRIAL PARK, NO. 35 JUKENG ROAD,  
DASHUIKENG VILLAGE, GUANLAN TOWN, BAOAN  
DISTRICT, SHENZHEN, CHINA  
TEL: 86-755-28055000  
FAX: 86-755-28055221**

## VERIFICATION OF COMPLIANCE

Applicant:	SHENZHEN LANGUANG I&E CO., LTD 8/F LANGUANG BLDG, ZHENHUA RD SHENZHEN 518031 CHINA
Product Description:	Wireless FM transmitter
Brand Name:	SONIC IMPACT
Model Number:	5026
Serial Number:	N/A
File Number:	SZE0408029
Date of Test:	August 18,2004 ~ August 25, 2004

### We hereby certify that:

The above equipment was tested by COMPLIANCE CERTIFICATION SERVICES (SHENZHEN) INC. The test data, data evaluation, test procedures, and equipment configurations shown in this report were made in accordance with the procedures given in ANSI C63.4 (2001) and the energy emitted by the sample EUT tested as described in this report is in compliance with conducted and radiated emission limits of FCC Rules Part 15.239.

The test results of this report relate only to the tested sample identified in this report.

*Approved By*



---

*Clinton / Q.A. Manager*  
**COMPLIANCE CERTIFICATION  
SERVICES (SHENZHEN) INC.**

*Reviewed By*



---

*Jimmy*  
**COMPLIANCE CERTIFICATION  
SERVICES (SHENZHEN) INC.**

## Table of Contents

<b>1.</b>	<b>GENERAL INFORMATION.....</b>	<b>4</b>
1.1	PRODUCT DESCRIPTION .....	4
1.2	RELATED SUBMITTAL(S) / GRANT (S).....	4
1.3	TEST METHODOLOGY.....	4
1.4	TEST FACILITY .....	4
<b>2.</b>	<b>System Test Configuration .....</b>	<b>5</b>
2.1	EUT CONFIGURATION.....	5
2.2	EUT EXERCISE.....	5
2.3	TEST PROCEDURE.....	5
2.4	LIMITATION.....	5
2.5	CONFIGURATION OF TESTED SYSTEM.....	7
<b>3.</b>	<b>Summary Of Test Results .....</b>	<b>9</b>
<b>4.</b>	<b>Description of test modes.....</b>	<b>9</b>
<b>5.</b>	<b>Conducted Emissions Test (Not applicable in this report) .....</b>	<b>10</b>
5.1	MEASUREMENT PROCEDURE: .....	10
5.2	TEST SET-UP (BLOCK DIAGRAM OF CONFIGURATION).....	10
5.3	MEASUREMENT EQUIPMENT USED: .....	10
5.4	MEASUREMENT RESULT: .....	10
5.5	CONDUCTED MEASUREMENT PHOTOS:.....	10
<b>6.</b>	<b>RADIATED EMISSION TEST.....</b>	<b>11</b>
6.1	MEASUREMENT PROCEDURE.....	11
6.2	TEST SET-UP (BLOCK DIAGRAM OF CONFIGURATION).....	12
6.3	MEASUREMENT EQUIPMENT USED: .....	13
6.4	FIELD STRENGTH CALCULATION .....	13
6.5	MEASUREMENT RESULT.....	14
6.6	MEASUREMENT RESULT.....	错误！未定义书签。 6
<b>7.</b>	<b>OCCUPIED BANDWIDTH .....</b>	<b>18</b>
7.1	MEASUREMENT PROCEDURE.....	168
7.2	TEST SET-UP (BLOCK DIAGRAM OF CONFIGURATION).....	188
7.3	MEASUREMENT EQUIPMENT USED: .....	188
7.4	MEASUREMENT RESULTS:.....	188
<b>APPENDIX 1</b>		
<b>PHOTOGRAPHS OF SET UP.....</b>		<b>20</b>
<b>APPENDIX 2</b>		
<b>PHOTOGRAPHS</b>		<b>OF</b>
<b>EUT.....</b>		<b>222</b>

## **1. GENERAL INFORMATION**

### **1.1 Product Description**

The SHENZHEN LANGUANG I&E CO., LTD. Model: 5026 (referred to as the EUT in this report) The EUT is an short range, lower power, wireless FM transmitter designed as an “ Output Device”. It is designed by way of utilizing the F3E modulation achieves the system operating.

A major technical descriptions of EUT is described as following:

- A). Operation Frequency: 88.3784 MHz ~ 89.8596 MHz
- B). Modulation: F3E
- C). Antenna Designation: Non-User Replaceable (Fixed)
- D). Power Supply: 3 Vdc by battery.
- E). Output Power: 0.00005 mW

### **1.2 Related Submittal(s) / Grant (s)**

This submittal(s) (test report) is intended for FCC ID: SGA0923 filing to comply with Section 15.239 of the FCC Part 15, Subpart C Rules. The composite system (receiver) is compliance with Subpart B is authorized under a DoC procedure.

### **1.3 Test Methodology**

Both conducted and radiated testing were performed according to the procedures in ANSI C63.4 (2001). Radiated testing was performed at an antenna to EUT distance 3 meters.

### **1.4 Test Facility**

The open area test site and conducted measurement facility used to collect the radiated data is located on the address of COMPLIANCE CERTIFICATION SERVICES (SHENZHEN) INC. No. 6, Jinao industrial park, No.35 Jukeng Road, Dashuikeng Village, Guanlan Town, Baoan District, Shenzhen, China. The Open Area Test Sites and the Line Conducted labs are constructed and calibrated to meet the FCC requirements in documents ANSI C63.4: 2001 and CISPR 22/EN 55022 requirements.

### **1.5 Special Accessories**

Not available for this EUT intended for grant.

### **1.6 Equipment Modifications**

Not available for this EUT intended for grant.

## System Test Configuration

### 2.1 EUT Configuration

The EUT configuration for testing is installed on RF field strength measurement to meet the Commissions requirement and operating in a manner which intends to maximize its emission characteristics in a continuous normal application.

### 2.2 EUT Exercise

The Transmitter was operated in the normal operating mode. the TX frequency was fixed which was for the purpose of the measurements.

### 2.3 Test Procedure

#### 2.3.1 Conducted Emissions (Not apply in the report)

The EUT is a placed on as turn table which is 0.8 m above ground plane. According to the requirements in Section 13.1.4.1 of ANSI C63.4-2001. Conducted emissions from the EUT measured in the **frequency range between 0.15 MHz and 30MHz** using **CISPR Quasi-Peak and average detector mode**.

#### 2.3.2 Radiated Emissions

The EUT is a placed on as turn table which is 0.8 m above ground plane. The turn table shall rotate 360 degrees to determine the position of maximum emission level. EUT is set 3m away from the receiving antenna which varied from 1m to 4m to find out the highest emission. And also, each emission was to be maximized by changing the polarization of receiving antenna both horizontal and vertical. In order to find out the max. emission.

### 2.4 Limitation

#### (1) Conducted Emission (Not applicable in this report)

According to section 15.207(a) Conducted Emission Limits is as following.

Frequency range MHz	Limits dB(uV)	
	Quasi-peak	Average
0.15 to 0.50	66 to 56	56 to 46
0.50 to 5	56	46
5 to 30	60	50
Note 1.The lower limit shall apply at the transition frequencies 2.The limit decreases linearly with the logarithm of the frequency in the range 0.15 MHz to 0.50 MHz.		

(2) **Radiated Emission**

- a. The field strength of any emission within this band (section 15.239 frequency between 88MHz –108MHz) shall not exceed 250 micro volts/meter at 3 meters. (47.96dBμV at 3m) The emission limit in this paragraph is based on measurement instrumentation employing an average detector. The provisions in section 15.35 for limiting peak emissions apply.
- b. The field strength of any emissions which appear outside of this band shall not exceed the general radiated emission limits in section 15.209(Intentional Radiators general limit).as below.

Frequency (MHz)	Field strength μV/m	Distance(m)	Field strength at 3m dBμV/m
1.705-30	30	30	69.54
30-88	100	3	40
88-216	150	3	43.5
216-960	200	3	46
Above 960	500	3	54

- Remark: 1. Emission level in dBuV/m=20 log (uV/m)
2. Measurement was performed at an antenna to the closed point of EUT distance of meters.
3. Only spurious frequency is permitted to locate within the Restricted Bands specified in provision of § 15.205
4. Emission spurious frequency which appearing within the Restricted Bands specified in provision of §15.205, then the general radiated emission limits in § 15.209 apply.

## 2.5 Configuration of Tested System

**Fig. 2-1 Configuration of Tested System**

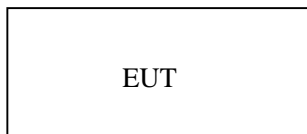


Table 2-1 Equipment Used in Tested System

Item	Equipment	Mfr/Brand	Model/Type No.	FCC ID	Series No.	Note
E-1	Wireless FM transmitter	SONIC IMPACT	5026	SGA0923	N/A	<b><i>EUT</i></b>
E-2	Walk man	SONY	N/A	N/A	N/A	



## Summary Of Test Results

FCC Rules	Description Of Test	Result
§ 15.207	Conducted Emission	N/A
§ 15.239	Radiated Emission	Compliant
§ 15.239	26 dB Bandwidth	Compliant

### 1. Description of test modes

1. The EUT (Wireless FM transmitter) has been tested under normal operating condition.
2. The EUT stay in continuous transmitting mode.

## **Conducted Emissions Test (Not applicable in this report)**

### 5.1 Measurement Procedure:

1. The EUT was placed on a table which is 0.8m above ground plane.
2. Maximum procedure was performed on the six highest emissions to ensure EUT compliance.
3. Repeat above procedures until all frequency measured were complete.

### 5.2 Test SET-UP (Block Diagram of Configuration)

### 5.3 Measurement Equipment Used:

<b>Conducted Emission Test Site # 4</b>					
<b>EQUIPMENT TYPE</b>	<b>MFR</b>	<b>MODEL NUMBER</b>	<b>SERIAL NUMBER</b>	<b>LAST CAL.</b>	<b>CAL DUE.</b>
EMI Test Receiver	HP	8546A	3448A00232	06/08/2004	06/07/2005
Spectrum Analyzer	ADVANTEST	R3132	120901472	06/08/2004	06/07/2005
LISN	EMCO	3825/2	1371	02/27/2004	02/26/2005
LISN	EMCO	3825/2	8901-1459	02/27/2004	02/26/2005

### 5.4 Measurement Result:

**N/A**

### 5.5 Conducted Measurement Photos:

**N/A**

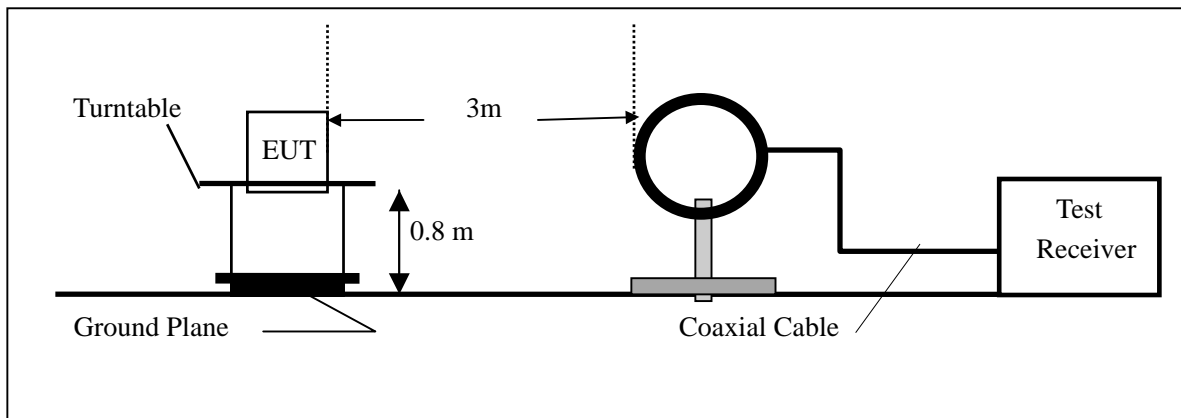
## **1. Radiated Emission Test**

### **6.1 Measurement Procedure**

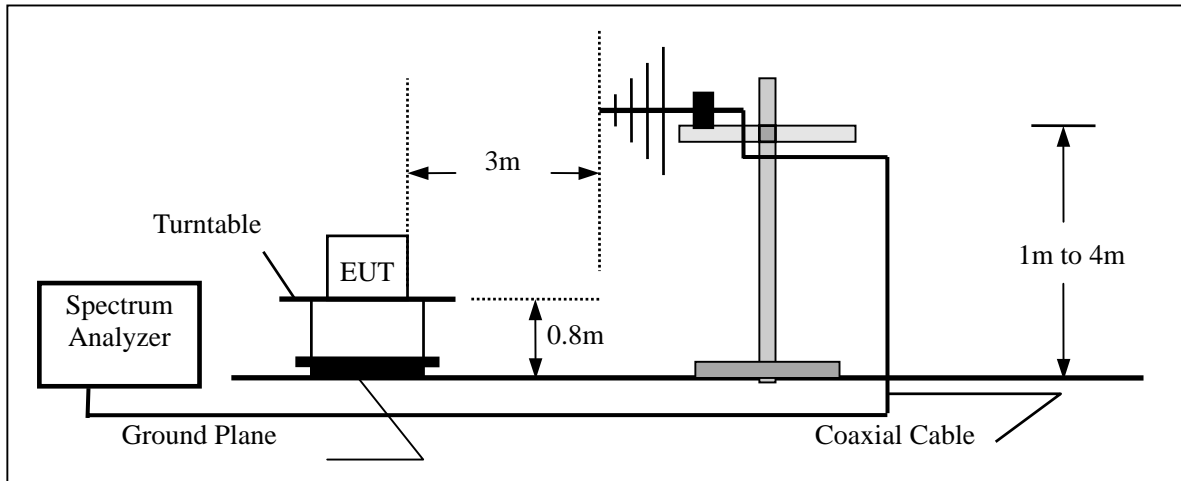
1. The EUT was placed on a turn table which is 0.8m above ground plane.
2. Maximum procedure was performed on at least twelve highest emissions to ensure EUT compliance.
3. And also, each emission was to be maximized by changing the polarization of receiving antenna both horizontal and vertical.
4. Repeat above procedures until all frequencies measured were completed.

## 6.2 Test SET-UP (Block Diagram of Configuration)

### (A) Radiated Emission Test Set-Up, Frequency Below 30MHz



### (B) Radiated Emission Test Set-Up, Frequency Below 1000MHz



### 6.3 Measurement Equipment Used:

Open Area Test Site # 3					
EQUIPMENT TYPE	MFR	MODEL NUMBER	SERIAL NUMBER	LAST CAL.	CAL DUE.
Spectrum Analyzer	ADVANTEST	R3132	120901472	06/08/2004	06/07/2005
EMI Test Receiver	HP	8546A	3448A00232	06/08/2004	06/07/2005
Pre-Amplifier	HP	8447D	2944A07999	06/08/2004	06/07/2005
Bi-log Antenna	EMCO	3142	9910-1436	06/08/2004	06/07/2005

### 6.4 Field Strength Calculation

The field strength is calculated by adding the Antenna Factor and Cable Factor and subtracting the Amplifier Gain and Duty Cycle Correction Factor(if any) from the measured reading. The basic equation with a sample calculation is as follows:

$$FS = RA + AF + CL - AG$$

Where	FS = Field Strength	CL = Cable Attenuation Factor (Cable Loss)
	RA = Reading Amplitude	AG = Amplifier Gain
	AF = Antenna Factor	

## 6.5 Measurement Result

Operation Mode: Transmitting Mode At Normal Operation Test Date : August 23, 2004  
Fundamental Frequency: 89.8596 MHz Test By: Jimmy  
Temperature : 22 Pol: Vertical  
Humidity : 60 %  
Judgement : Passed by -17.21 dB at 898.596 MHz Ant.Pol. Ver.

Freq. (MHz)	Ant.Pol. H/V	DetectorMode (PK/AV)	Reading (dBuV)	Ant./CL/ Amp. CF(dB)	Actual FS (dBuV/m)	Limit3m (dBuV/m)	Safe Margin (dB)	Note
89.860	V	Peak	19.86	7.22	27.08	47.96	-20.88	F
179.719	V	Peak	7.76	12.60	20.36	43.50	-23.14	H
269.579	V	Peak	6.38	15.85	22.23	46.00	-23.77	H
359.438	V	Peak	2.37	18.38	20.75	46.00	-25.25	H
449.298	V	Peak	1.65	20.99	22.64	46.00	-23.36	H
539.158	V	Peak	1.34	22.72	24.06	46.00	-21.94	H
629.017	V	Peak	1.25	24.09	25.34	46.00	-20.66	H
718.877	V	Peak	1.05	26.73	27.78	46.00	-18.22	H
808.736	V	Peak	0.56	26.59	27.15	46.00	-18.85	H
898.596	V	Peak	0.31	28.48	28.79	46.00	-17.21	H

### Remark :

- (1) Measuring frequencies from 30 MHz to the 1GHz.
- (2) "F" denotes fundamental frequency; "H" denotes spurious frequency. "E" denotes band edge frequency.
- (3) \* denotes emission frequency which appearing within the Restricted Bands specified in provision of 15.205, then the general radiated emission limits in 15.209 apply.
- (4) Datas of measurement within this frequency range shown " - " in the table above means the reading of emissions are attenuated more than 20dB below the permissible limits or the field strength is too small to be measured.
- (5) The IF bandwidth of EMI Test Receiver between 30MHz to 1GHz was 120KHz.

Operation Mode: Transmitting Mode At Normal Operation Test Date : August 23, 2004  
Fundamental Frequency: 89.8596 MHz Test By: Jimmy  
Temperature : 22 Pol: Horizontal  
Humidity: 60 %  
Judgement: Passed by -11.88 dB at 718.877 MHz Ant.Pol. Hor.

Freq. (MHz)	Ant.Pol. H/V	DetectorMode (PK/AV)	Reading (dBuV)	Ant./CL/ Amp. CF(dB)	Actual FS (dBuV/m)	Limit3m (dBuV/m)	Safe Margin (dB)	Note
89.860	H	Peak	26.80	7.13	33.93	47.96	-14.03	F
179.719	H	Peak	18.99	9.29	28.28	43.50	-15.22	H
269.579	H	Peak	15.67	12.66	28.33	46.00	-17.67	H
359.438	H	Peak	20.15	9.92	30.07	46.00	-15.93	H
449.298	H	Peak	11.95	12.63	24.58	46.00	-21.42	H
539.158	H	Peak	14.11	15.15	29.26	46.00	-16.74	H
629.017	H	Peak	16.00	16.88	32.88	46.00	-13.12	H
718.877	H	Peak	16.02	18.10	34.12	46.00	-11.88	H
808.736	H	Peak	13.58	19.37	32.95	46.00	-13.05	H
898.596	H	Peak	10.11	20.95	31.06	46.00	-14.94	H

Remark :

- (1) Measuring frequencies from 25 MHz to the 1GHz.
- (2) "F" denotes fundamental frequency; "H" denotes spurious frequency. "E" denotes band edge frequency.
- (3) \* denotes emission frequency which appearing within the Restricted Bands specified in provision of 15.205, then the general radiated emission limits in 15.209 apply.
- (4) Datas of measurement within this frequency range shown " - " in the table above means the reading of emissions are attenuated more than 20dB below the permissible limits or the field strength is too small to be measured.
- (5) The IF bandwidth of EMI Test Receiver between 30MHz to 1GHz was 120KHz.

## 6.6 Measurement Result

Operation Mode: Transmitting Mode At Normal Operation Test Date : August 23, 2004  
 Fundamental Frequency: 88.3784 MHz Test By: Jimmy  
 Temperature : 22 Pol: Vertical  
 Humidity : 60 %  
 Judgement : Passed by -17.17 dB at 883.784 MHz Ant.Pol. Ver.

Freq. (MHz)	Ant.Pol. H/V	DetectorMode (PK/AV)	Reading (dBuV)	Ant./CL/ Amp. CF(dB)	Actual FS (dBuV/m)	Limit3m (dBuV/m)	Safe Margin (dB)	Note
88.378	V	Peak	19.86	7.22	27.08	47.96	-20.88	F
176.575	V	Peak	7.73	12.60	20.33	43.50	-23.17	H
265.135	V	Peak	6.35	15.85	22.20	46.00	-23.80	H
353.514	V	Peak	2.39	18.38	20.77	46.00	-25.23	H
441.892	V	Peak	1.68	20.99	22.67	46.00	-23.33	H
530.270	V	Peak	1.36	22.72	24.08	46.00	-21.92	H
618.649	V	Peak	1.27	24.09	25.36	46.00	-20.64	H
707.027	V	Peak	1.03	26.73	27.76	46.00	-18.24	H
795.406	V	Peak	0.59	26.59	27.18	46.00	-18.82	H
883.784	V	Peak	0.35	28.48	28.83	46.00	-17.17	H

### Remark :

- (1) Measuring frequencies from 30 MHz to the 1GHz.
- (2) "F" denotes fundamental frequency; "H" denotes spurious frequency. "E" denotes band edge frequency.
- (3) \* denotes emission frequency which appearing within the Restricted Bands specified in provision of 15.205, then the general radiated emission limits in 15.209 apply.
- (4) Datas of measurement within this frequency range shown " - " in the table above means the reading of emissions are attenuated more than 20dB below the permissible limits or the field strength is too small to be measured.
- (5) The IF bandwidth of EMI Test Receiver between 30MHz to 1GHz was 120KHz.



Operation Mode: Transmitting Mode At Normal Operation Test Date : August 23, 2004  
Fundamental Frequency: 88.3784 MHz Test By: Jimmy  
Temperature : 22 Pol: Horizontal  
Humidity: 60 %  
Judgement: Passed by -11.78 dB at 707.027 MHz Ant.Pol. Hor.

Freq. (MHz)	Ant.Pol. H/V	DetectorMode (PK/AV)	Reading (dBuV)	Ant./CL/ Amp. CF(dB)	Actual FS (dBuV/m)	Limit3m (dBuV/m)	Safe Margin (dB)	Note
88.378	H	Peak	26.80	7.13	33.93	47.96	-14.03	F
176.575	H	Peak	18.93	9.29	28.22	43.50	-15.28	H
265.135	H	Peak	15.60	12.66	28.26	46.00	-17.74	H
353.514	H	Peak	20.12	9.92	30.04	46.00	-15.96	H
441.892	H	Peak	11.90	12.63	24.53	46.00	-21.47	H
530.270	H	Peak	14.20	15.15	29.35	46.00	-16.65	H
618.649	H	Peak	16.23	16.88	33.11	46.00	-12.89	H
707.027	H	Peak	16.12	18.10	34.22	46.00	-11.78	H
795.406	H	Peak	13.50	19.37	32.87	46.00	-13.13	H
883.784	H	Peak	10.09	20.95	31.04	46.00	-14.96	H

Remark :

- (1) Measuring frequencies from 25 MHz to the 1GHz.
- (2) "F" denotes fundamental frequency; "H" denotes spurious frequency. "E" denotes band edge frequency.
- (3) \* denotes emission frequency which appearing within the Restricted Bands specified in provision of 15.205, then the general radiated emission limits in 15.209 apply.
- (4) Datas of measurement within this frequency range shown " - " in the table above means the reading of emissions are attenuated more than 20dB below the permissible limits or the field strength is too small to be measured.
- (5) The IF bandwidth of EMI Test Receiver between 30MHz to 1GHz was 120KHz.

## **7. Occupied Bandwidth**

### **7.1 Measurement Procedure**

1. The EUT was placed on a turn table which is 0.8m above ground plane.
2. Set EUT as normal operation
3. Set SPA Center Frequency = Fundamental Frequency , RBW,VBW= 1KHz, Span =200KHz.
4. Set SPA Max hold. Mark peak, -26dB.

### **7.2 Test SET-UP (Block Diagram of Configuration)**

Same as 6.2 Radiated Emission Measurement.

### **7.3 Measurement Equipment Used:**

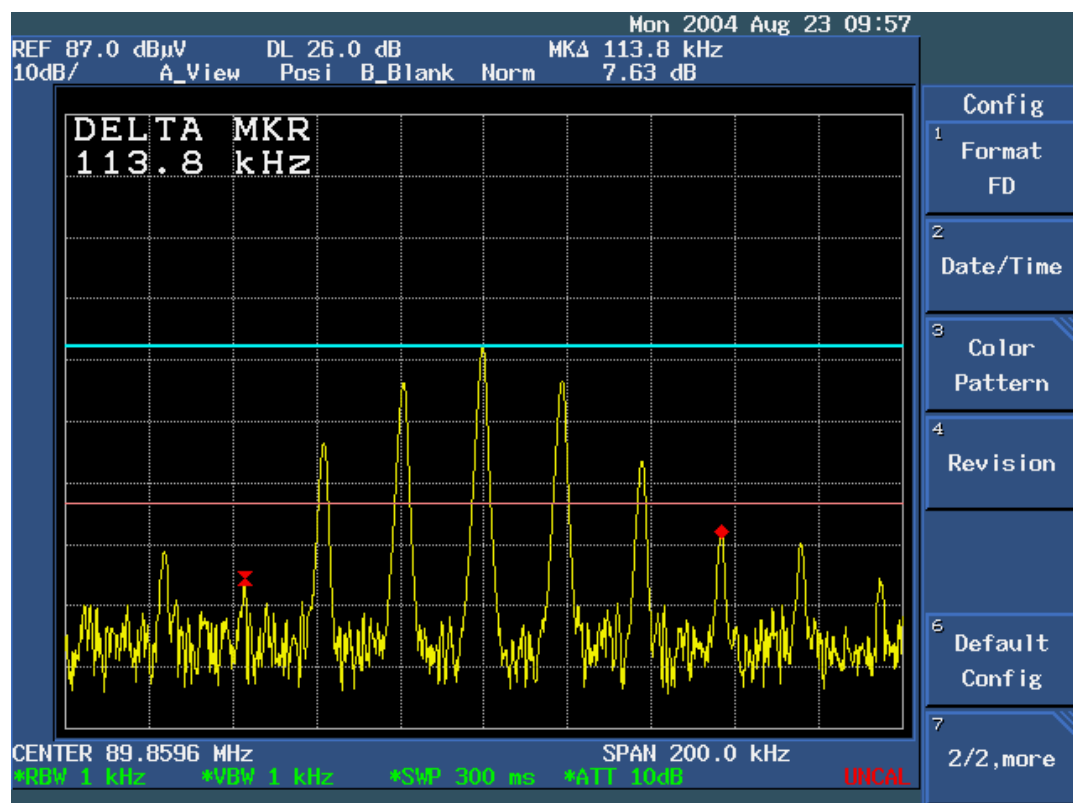
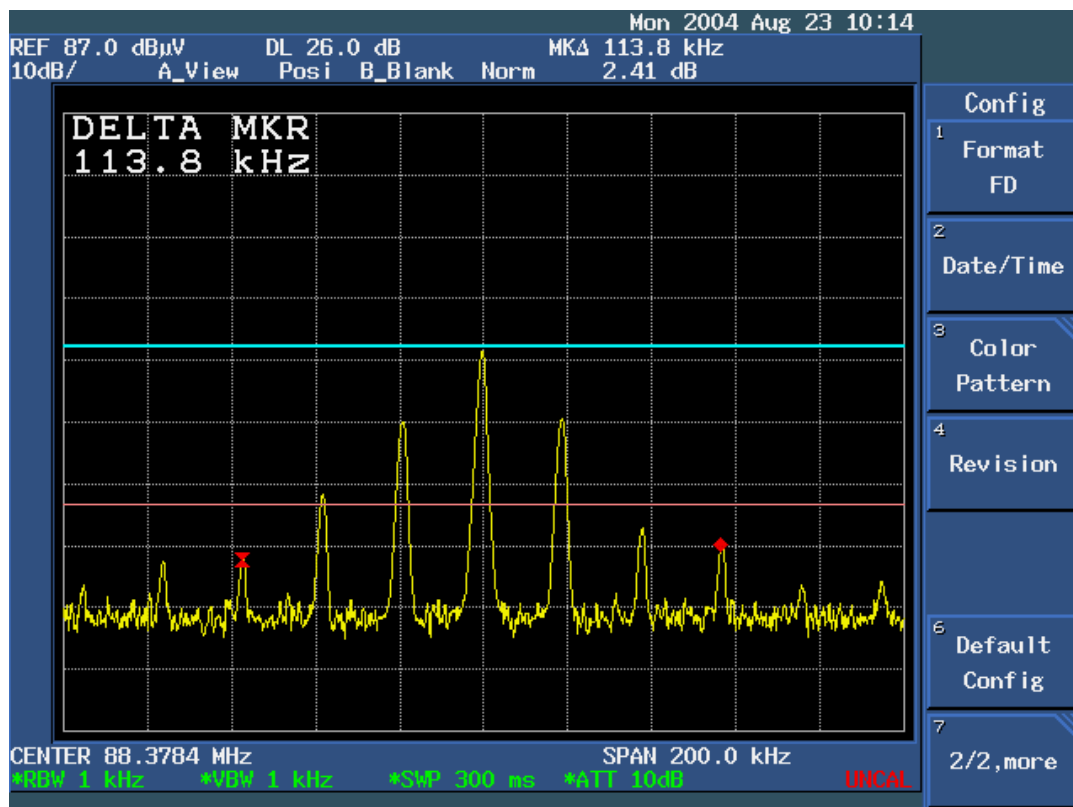
Same as 6.3 Radiated Emission Measurement.

### **7.4 Measurement Results:**

26dB bandwidth = 113.8 KHz

Refer to attached data chart.

## 26dB Bandwidth Test Data :



## **APPENDIX 1**

### **PHOTOGRAPHS OF SET UP**

## **Radiated Emission Setup Photos**



## **APPENDIX 2**

# **PHOTOGRAPHS OF EUT**

***Top View of TX***



***Bottom View of TX***



***Front View of TX***



***Back View of TX***





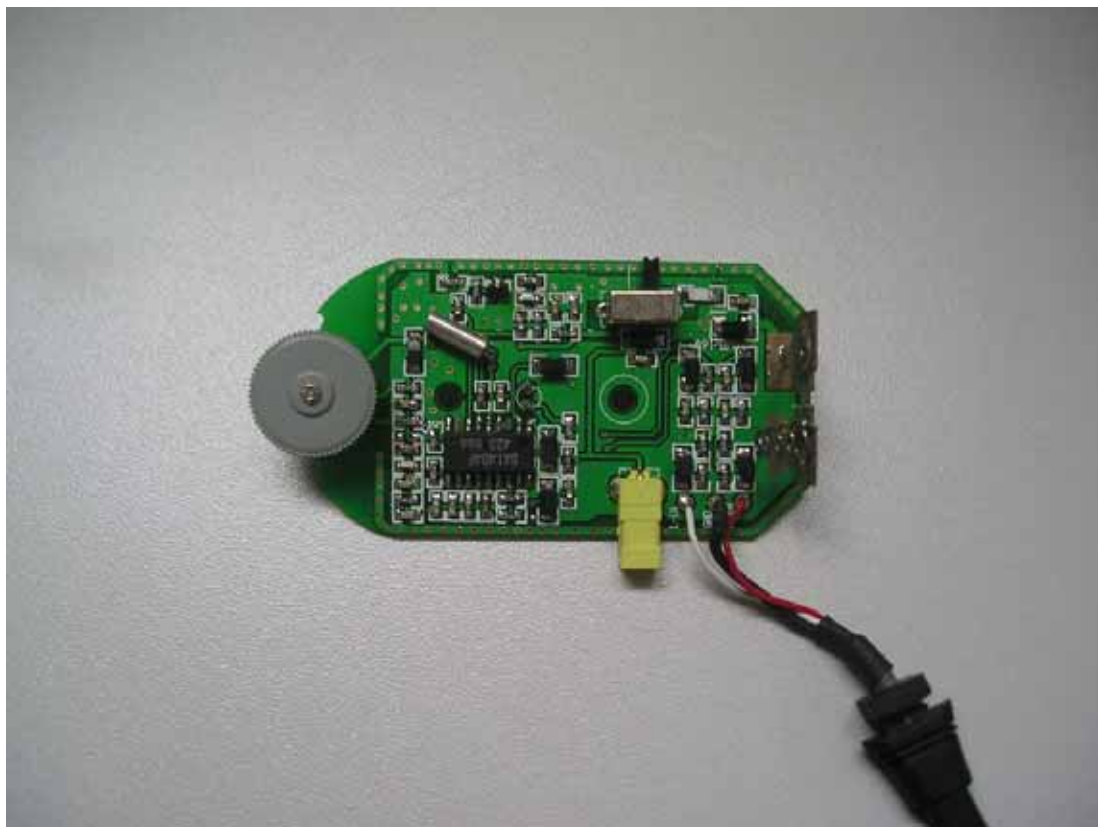
**Left View of TX**



**Right View of TX**



### Internal of TX- 1



### Internal of TX- 2

