

ATTACHMENT Q – DIPOLE VALIDATION

■ Validation Data (835MHz Head)

Dipole 835 MHz

SAM I Phantom; Flat Section; Position: (90°,90°); Frequency: 835 MHz

Probe: ET3DV6 - SN1609; ConvF(6.63,6.63,6.63); Crest factor: 1.0; Brain 835 MHz: $\sigma = 0.91$ mho/m $\epsilon_r = 43.2$ $\rho = 1.00$ g/cm³

Cubes (2): SAR (1g): 9.98 mW/g ± 0.04 dB, SAR (10g): 6.45 mW/g ± 0.04 dB

Coarse: Dx = 20.0, Dy = 20.0, Dz = 10.0

Powerdrift: 0.01 dB

Comment :

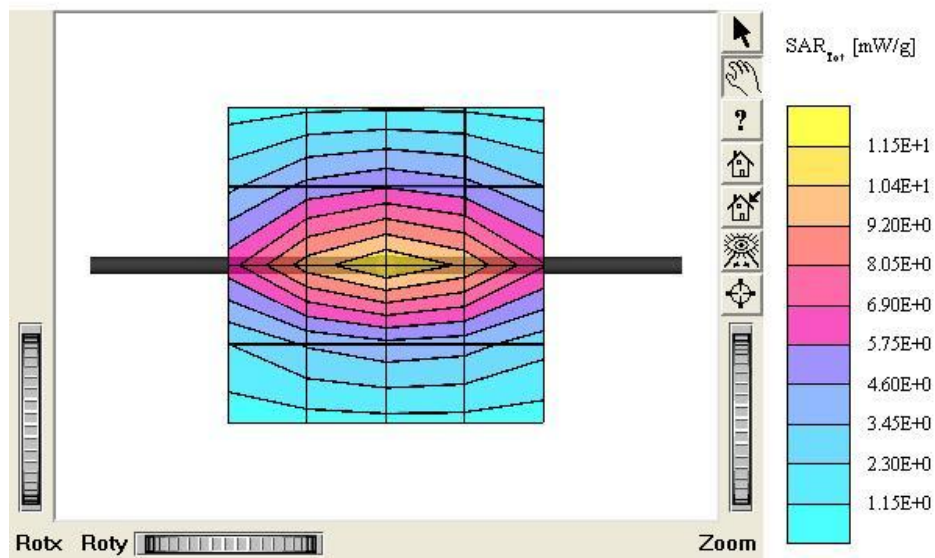
835MHz Brain Dipole Validation (D835V2/ S.N: 441)

Antenna Input Power: 30 dBm (1 W)

HCT Co., Ltd. Brain Tissue Simulating Liquid

Liquid Temperature : 21.5°C

Date Tested : August 25, 2005



Dipole 835 MHz

SAM I Phantom; Section; Position: ; Frequency: 835 MHz

Probe: ET3DV6 - SN1609; ConvF(6.63,6.63,6.63); Crest factor: 1.0; Brain 835 MHz: $\sigma = 0.91$ mho/m $\epsilon_r = 43.2$ $\rho = 1.00$ g/cm³

:

Z-Axis: Dx = 0.0, Dy = 0.0, Dz = 5.0

Comment :

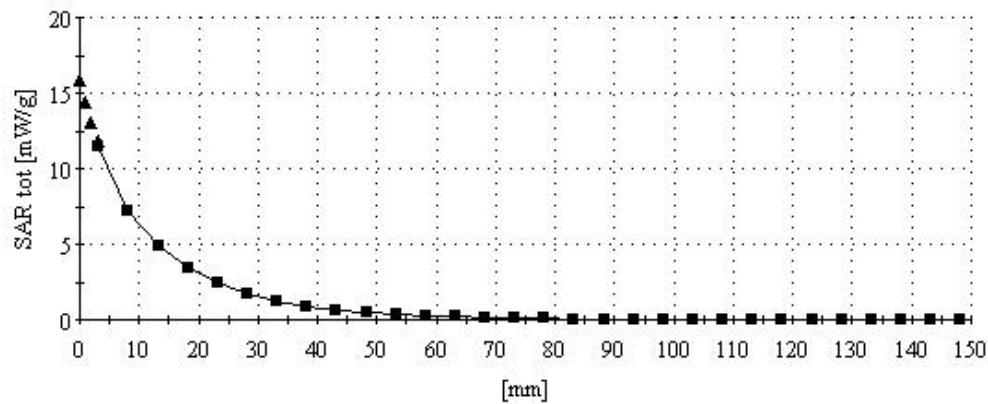
835MHz Brain Dipole Validation (D835V2/ S.N: 441)

Antenna Input Power: 30 dBm (1 W)

HCT Co., Ltd. Brain Tissue Simulating Liquid

Liquid Temperature : 21.5°C

Date Tested : August 25, 2005



■ Dielectric Parameter (835MHz Head)

Title : T1100C
SubTitle : CDMA HEAD
August 25, 2005 09:50 AM

Frequency	e'	e''
800.000000 MHz	43.9363	19.7954
805.000000 MHz	43.8733	19.7210
810.000000 MHz	43.8184	19.7104
815.000000 MHz	43.6718	19.7156
820.000000 MHz	43.5618	19.6731
825.000000 MHz	43.4802	19.6500
830.000000 MHz	43.3403	19.6602
835.000000 MHz	43.1980	19.6557
840.000000 MHz	43.1336	19.5870
845.000000 MHz	42.9753	19.5885
850.000000 MHz	42.9754	19.5545
855.000000 MHz	42.8775	19.5393
860.000000 MHz	42.8113	19.5565
865.000000 MHz	42.7527	19.5612
870.000000 MHz	42.6689	19.5121
875.000000 MHz	42.5516	19.4841
880.000000 MHz	42.5111	19.4538
885.000000 MHz	42.4188	19.5002
890.000000 MHz	42.3304	19.5051
895.000000 MHz	42.2896	19.4157
900.000000 MHz	42.2086	19.3893